

State of West Virginia  
Department of Environmental Protection - Office of Oil and Gas  
Well Operator's Report of Well Work

API 47-017-06371 County Doddridge District Central  
Quad Oxford 7.5' Pad Name Fritz Pad Field/Pool Name ---  
Farm name Horton, Judy A. Well Number Washington Unit 2H  
Operator (as registered with the OOG) Antero Resources Corporation  
Address 1615 Wynkoop St. City Denver State CO Zip 80202

As Drilled location NAD 83/UTM Attach an as-drilled plat, profile view, and deviation survey  
Top hole Northing 4342785m Easting 513820m  
Landing Point of Curve Northing 4343000.05m Easting 513843.99m  
Bottom Hole Northing 4345245m Easting 512775m

Elevation (ft) 1053' GL Type of Well  New  Existing Type of Report  Interim  Final  
Permit Type  Deviated  Horizontal  Horizontal 6A  Vertical Depth Type  Deep  Shallow  
Type of Operation  Convert  Deepen  Drill  Plug Back  Redrilling  Rework  Stimulate  
Well Type  Brine Disposal  CBM  Gas  Oil  Secondary Recovery  Solution Mining  Storage  Other \_\_\_\_\_  
Type of Completion  Single  Multiple Fluids Produced  Brine  Gas  NGL  Oil  Other \_\_\_\_\_  
Drilled with  Cable  Rotary

Drilling Media Surface hole  Air  Mud  Fresh Water Intermediate hole  Air  Mud  Fresh Water  Brine  
Production hole  Air  Mud  Fresh Water  Brine

Mud Type(s) and Additive(s)  
Air- Foam & 4% KCL  
Mud- Polymer

Received  
Office of Oil & Gas  
JUL 20 2015

Date permit issued 11/21/2013 Date drilling commenced 4/15/2014 Date drilling ceased 9/22/2014  
Date completion activities began 9/30/2014 Date completion activities ceased 2/8/2015  
Verbal plugging (Y/N) N/A Date permission granted N/A Granted by N/A

Please note: Operator is required to submit a plugging application within 5 days of verbal permission to plug

Freshwater depth(s) ft 97' Open mine(s) (Y/N) depths No  
Salt water depth(s) ft 1143', 1529' Void(s) encountered (Y/N) depths No  
Coal depth(s) ft 1429' Cavern(s) encountered (Y/N) depths No  
Is coal being mined in area (Y/N) No

Reviewed by:  
JK 8/24/15  
10/23/2015

API 47-017 - 06371 Farm name Horton, Judy A. Well number Washington Unit 2H

CASING STRINGS	Hole Size	Casing Size	Depth	New or Used	Grade w/ft	Basket Depth(s)	Did cement circulate (Y/N) * Provide details below*
Conductor	28"	20"	90'	New	94# J-55	N/A	Y
Surface	17- 1/2"	13- 3/8"	347'	New	48# H-40	N/A	Y
Coal							
Intermediate 1	12-1/4"	9-5/8"	2496'	New	36# J-55	N/A	Y
Intermediate 2							
Intermediate 3							
Production	8-3/4" & 8-1/2"	5-1/2"	15297'	New	23# P-110	N/A	Y
Tubing		2-3/8"	6705'		4.7# N-80	N/A	
Packer type and depth set		N/A					

Comment Details \_\_\_\_\_

CEMENT DATA	Class/Type of Cement	Number of Sacks	Slurry wt (ppg)	Yield (ft <sup>3</sup> /sks)	Volume (ft <sup>3</sup> )	Cement Top (MD)	WOC (hrs)
Conductor	Class A	300 sx	15.6	1.18	86	0'	8 Hrs.
Surface	Class A	410 sx	14.5	1.3	241	0'	8 Hrs.
Coal							
Intermediate 1	Class A	925 sx	15.6	1.18	782	0'	8 Hrs.
Intermediate 2							
Intermediate 3							
Production	Class H	879 sx (Lead) 1399 sx (Tail)	14.5 Lead 15.2 Tail	1.30 Lead 1.86 Tail	3047	-500' into Intermediate Casing	8 Hrs.
Tubing							

Drillers TD (ft) 15297' MD, 6644' TVD (BHL), 6658' TVD (Deepest Point Drilled) Loggers TD (ft) 15249'  
 Deepest formation penetrated Marcellus Plug back to (ft) N/A  
 Plug back procedure N/A

Kick off depth (ft) 6009'

Check all wireline logs run  caliper  density  deviated/directional  induction  
 neutron  resistivity  gamma ray  temperature  sonic

Well cored  Yes  No  Conventional  Sidewall Were cuttings collected  Yes  No

DESCRIBE THE CENTRALIZER PLACEMENT USED FOR EACH CASING STRING \_\_\_\_\_

Conductor- 0  
 Surface- 1 above guide shoe, 1 above insert float, 1 every 4th joint to surface  
 Intermediate- 1 above float joint, 1 above float collar, 1 every 4th joint to surface  
 Production- 1 above float joint, 1 below float collar, 1 every 3rd joint to top of cement

WAS WELL COMPLETED AS SHOT HOLE  Yes  No DETAILS \_\_\_\_\_

WAS WELL COMPLETED OPEN HOLE?  Yes  No DETAILS \_\_\_\_\_

WERE TRACERS USED  Yes  No TYPE OF TRACER(S) USED \_\_\_\_\_

Received  
 Office of Oil & Gas  
 JUL 20 2015





API 47-017-06371 Farm Name Horton, Judy A. Well Number Washington Unit 2H

**EXHIBIT 1**

Stage No.	Perforation Date	Perforated from MD ft.	Perforated to MD ft.	Number of Perforations	Formations
1	30-Sep-14	15,043	15,212	60	Marcellus
2	19-Dec-14	14,844	15,012	60	Marcellus
3	20-Dec-14	14,644	14,813	60	Marcellus
4	20-Dec-14	14,445	14,613	60	Marcellus
5	20-Dec-14	14,245	14,414	60	Marcellus
6	21-Dec-14	14,046	14,214	60	Marcellus
7	21-Dec-14	13,847	14,015	60	Marcellus
8	21-Dec-14	13,647	13,815	60	Marcellus
9	21-Dec-14	13,448	13,616	60	Marcellus
10	22-Dec-14	13,248	13,416	60	Marcellus
11	22-Dec-14	13,049	13,217	60	Marcellus
12	22-Dec-14	12,849	13,017	60	Marcellus
13	23-Dec-14	12,650	12,818	60	Marcellus
14	23-Dec-14	12,450	12,618	60	Marcellus
15	23-Dec-14	12,251	12,419	60	Marcellus
16	23-Dec-14	12,051	12,220	60	Marcellus
17	23-Dec-14	11,852	12,020	60	Marcellus
18	26-Dec-14	11,652	11,821	60	Marcellus
19	26-Dec-14	11,453	11,621	60	Marcellus
20	26-Dec-14	11,253	11,422	60	Marcellus
21	27-Dec-14	11,054	11,222	60	Marcellus
22	27-Dec-14	10,855	11,023	60	Marcellus
23	27-Dec-14	10,655	10,823	60	Marcellus
24	27-Dec-14	10,456	10,624	60	Marcellus
25	28-Dec-14	10,256	10,424	60	Marcellus
26	28-Dec-14	10,057	10,225	60	Marcellus
27	28-Dec-14	9,857	10,025	60	Marcellus
28	28-Dec-14	9,658	9,826	60	Marcellus
29	29-Dec-14	9,458	9,626	60	Marcellus
30	29-Dec-14	9,259	9,427	60	Marcellus
31	29-Dec-14	9,059	9,227	60	Marcellus
32	29-Dec-14	8,860	9,028	60	Marcellus
33	30-Dec-14	8,660	8,829	60	Marcellus
34	30-Dec-14	8,461	8,629	60	Marcellus
35	30-Dec-14	8,261	8,430	60	Marcellus
36	30-Dec-14	8,062	8,230	60	Marcellus
37	31-Dec-14	7,862	8,031	60	Marcellus
38	31-Dec-14	7,663	7,831	60	Marcellus
39	31-Dec-14	7,464	7,632	60	Marcellus
40	31-Dec-14	7,264	7,432	60	Marcellus
41	1-Jan-15	7,065	7,233	60	Marcellus
42	1-Jan-15	6,865	7,033	60	Marcellus

Received  
Office of Oil & Gas  
10/20/2015

**EXHIBIT 2**

Stage No.	Stimulations Date	Avg Pump Rate	Avg Treatment Pressure (PSI)	Max Breakdown Pressure (PSI)	ISIP (PSI)	Amount of Proppant (lbs)	Amount of Water (bbls)	Amount of Nitrogen/ other (units)
1	28-Oct-14	60.0	7,278	N/A	0	207,280	6,073	N/A
2	20-Dec-14	61.6	7,238	N/A	4,692	232,070	6,568	N/A
3	20-Dec-14	64.0	6,976	5,990	4,681	236,590	6,438	N/A
4	20-Dec-14	63.5	6,791	5,445	4,413	237,720	6,488	N/A
5	21-Dec-14	63.1	6,960	5,879	4,549	237,640	6,358	N/A
6	21-Dec-14	64.0	7,025	5,776	4,485	236,280	6,445	N/A
7	21-Dec-14	64.0	6,918	5,572	4,612	233,480	6,281	N/A
8	21-Dec-14	60.3	6,973	5,558	4,570	239,440	6,304	N/A
9	22-Dec-14	61.2	6,904	5,636	4,170	238,980	6,288	N/A
10	22-Dec-14	64.0	6,966	5,429	4,317	210,820	6,940	N/A
11	22-Dec-14	63.0	7,158	6,098	4,603	229,360	6,170	N/A
12	22-Dec-14	62.7	7,082	5,540	4,295	236,915	6,233	N/A
13	23-Dec-14	63.4	6,874	5,754	4,367	237,250	6,187	N/A
14	23-Dec-14	63.0	6,897	5,840	4,077	237,040	6,202	N/A
15	23-Dec-14	63.0	6,899	5,715	4,148	237,020	6,183	N/A
16	23-Dec-14	62.3	6,537	6,145	4,309	229,435	6,071	N/A
17	26-Dec-14	63.0	7,094	5,940	4,710	228,640	6,036	N/A
18	26-Dec-14	36.0	8,870	5,802	5,183	1,860	5,925	N/A
19	26-Dec-14	62.9	6,783	6,170	4,752	214,185	6,065	N/A
20	27-Dec-14	62.0	6,437	5,581	5,121	237,875	6,227	N/A
21	27-Dec-14	64.0	6,751	5,991	4,375	230,300	5,987	N/A
22	27-Dec-14	63.0	6,743	5,616	4,558	206,740	5,649	N/A
23	27-Dec-14	64.5	6,684	5,693	5,275	238,480	6,061	N/A
24	28-Dec-14	64.3	6,669	5,697	5,440	238,060	6,054	N/A
25	28-Dec-14	64.0	6,682	5,645	4,627	229,240	5,918	N/A
26	28-Dec-14	64.3	6,769	6,505	5,046	237,780	6,008	N/A
27	28-Dec-14	64.7	6,505	6,358	5,243	236,525	5,998	N/A
28	29-Dec-14	64.7	6,513	5,704	5,161	237,550	5,957	N/A
29	29-Dec-14	64.5	6,642	5,636	4,499	237,375	5,946	N/A
30	29-Dec-14	64.3	6,442	5,361	4,846	235,420	5,952	N/A
31	29-Dec-14	64.8	6,424	5,450	5,107	237,700	5,909	N/A
32	30-Dec-14	66.4	6,518	5,285	5,232	237,550	5,905	N/A
33	30-Dec-14	65.7	6,420	5,293	5,089	234,175	5,871	N/A
34	30-Dec-14	64.2	6,332	5,479	4,084	202,090	6,419	N/A
35	30-Dec-14	64.6	6,265	5,411	4,978	236,900	5,892	N/A
36	31-Dec-14	66.1	6,626	5,465	5,389	221,925	6,391	N/A
37	31-Dec-14	58.9	6,788	5,736	4,681	101,865	6,003	N/A
38	31-Dec-14	64.3	6,645	5,014	3,505	237,405	5,816	N/A
39	31-Dec-14	64.9	6,101	5,408	4,942	234,000	5,761	N/A
40	31-Dec-14	65.9	6,466	5,536	4,774	237,595	5,784	N/A
41	1-Jan-15	65.4	6,431	5,859	4,882	237,555	5,757	N/A
42	1-Jan-15	63.1	5,921	5,704	4,202	226,280	5,612	N/A
AVG=		62.9	6,762	5,693	4,571	9,372,390	256,162	TOTAL

Received  
Office of Oil & Gas  
JUL 20 2015



API 47-017-06371 Farm Name Horton, Judy A. Well Number Washington Unit 2H

**EXHIBIT 3**

LITHOLOGY/ FORMATION	TOP DEPTH (TVD)	BOTTOM DEPTH (TVD)	TOP DEPTH (MD)	BOTTOM DEPTH (MD)
	From Surface	From Surface	From Surface	From Surface
Fresh Water	97'	N/A	97'	N/A
Siltstone/Sandstone	0	109	0	109
Shale/ Siltstone	109	169	109	169
Siltstone/ Trace Coal	169	329	169	329
Siltstone/ Shale	329	429	329	429
Shale	429	509	429	509
Sandstone	509	549	509	549
Shale/ Siltstone	549	629	549	629
Limestone/ Shale	629	689	629	689
Shale/ Siltstone	689	829	689	829
Shale/ Limestone	829	909	829	909
Sandstone	909	969	909	969
Shale	969	1089	969	1089
Siltstone/ Trace Coal	1089	1429	1089	1429
Coal	1429	1549	1429	1549
Siltstone/ Trace Coal	1549	1689	1549	1689
Shale/ Siltstone	1689	1909	1689	1909
Big Lime	1,899	2028	1900	2029
Big Injun	2028	2382	2029	2382
Gantz Sand	2382	2562	2382	2562
Fifty Foot Sandstone	2562	2637	2562	2638
Gordon	2637	2964	2638	2965
Fifth Sandstone	2964	2983	2965	2983
Bayard	2983	3367	2983	3368
Warren	3367	3719	3368	3719
Speechley	3719	3992	3719	3993
Baltown	3992	4496	3993	4497
Bradford	4496	4915	4497	4916
Benson	4915	5181	4916	5182
Alexander	5181	5364	5182	5364
Elk	5364	5817	5364	5818
Rhinestreet	5817	6186	5818	6197
Sycamore	6186	6363	6197	6421
Middlesex	6363	6487	6421	6636
Burkett	6487	6519	6636	6716
Tully	6519	6551	6716	6821
Marcellus	6551	NA	6821	NA

Received  
Office of Oil & Gas  
JUL 20 2015

10/23/2015





17-06371



## Antero Resources

Doddridge County WV  
Fritz Pad: Hayden/Washington/Sheep/Hileman  
Washington Unit 2H  
Original Wellpath

Design: As Drilled

## EOW Completion Report

19 September, 2014

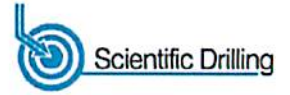


10/23/2015

17-06371



EOW Completion Report



<b>Company:</b>	Antero Resources	<b>Local Co-ordinate Reference:</b>	Well Washington Unit 2H
<b>Project:</b>	Doddridge County WV	<b>TVD Reference:</b>	Patterson 325: GL 1053' + 24' KB @ 1077.0usft
<b>Site:</b>	Fritz Pad: Hayden/Washington/Sheep/Hileman	<b>MD Reference:</b>	Patterson 325: GL 1053' + 24' KB @ 1077.0usft
<b>Well:</b>	Washington Unit 2H	<b>North Reference:</b>	Grid
<b>Wellbore:</b>	Original Wellpath	<b>Survey Calculation Method:</b>	Minimum Curvature
<b>Design:</b>	As Drilled	<b>Database:</b>	Oklahoma District

<b>Project</b>	Doddridge County WV, McClellan District		
<b>Map System:</b>	Universal Transverse Mercator (US Survey Fee	<b>System Datum:</b>	Mean Sea Level
<b>Geo Datum:</b>	NAD 1927 (NADCON CONUS)		
<b>Map Zone:</b>	Zone 17N (84 W to 78 W)		

<b>Site</b>	Fritz Pad: Hayden/Washington/Sheep/Hileman				
<b>Site Position:</b>	<b>Northing:</b>	14,247,222.50usft	<b>Latitude:</b>	39° 14' 2.856 N	
<b>From:</b> Map	<b>Easting:</b>	1,685,696.44usft	<b>Longitude:</b>	80° 50' 24.332 W	
<b>Position Uncertainty:</b>	2.0 usft	<b>Slot Radius:</b>	13-3/16"	<b>Grid Convergence:</b>	0.10 °

<b>Well</b>	Washington Unit 2H, Marcellus					
<b>Well Position</b>	<b>+N/-S</b>	0.0 usft	<b>Northing:</b>	14,247,236.72 usft	<b>Latitude:</b>	39° 14' 2.996 N
	<b>+E/-W</b>	0.0 usft	<b>Easting:</b>	1,685,710.20 usft	<b>Longitude:</b>	80° 50' 24.157 W
<b>Position Uncertainty</b>	2.0 usft	<b>Wellhead Elevation:</b>	1,077.0 usft	<b>Ground Level:</b>	1,053.0usft	

<b>Wellbore</b>	Original Wellpath
-----------------	-------------------

Magnetics	Model Name	Sample Date	Declination (°)	Dip Angle (°)	Field Strength (nT)
	IGRF2010	3/5/2014	-8.41	66.80	52,308

<b>Design</b>	As Drilled
---------------	------------

<b>Audit Notes:</b>					
<b>Version:</b>	1.0	<b>Phase:</b>	ACTUAL	<b>Tie On Depth:</b>	0.0
<b>Vertical Section:</b>	<b>Depth From (TVD) (usft)</b>	<b>+N/-S (usft)</b>	<b>+E/-W (usft)</b>	<b>Direction (°)</b>	
	0.0	0.0	0.0	334.54	

<b>Survey Program</b>	<b>Date</b>	9/19/2014			
<b>From (usft)</b>	<b>To (usft)</b>	<b>Survey (Wellbore)</b>	<b>Tool Name</b>	<b>Description</b>	
113.0	5,808.1	Survey #1 Gyro to KOP (Original Wellpath)	SDI Standard Keeper	Scientific Drilling Intl. Standard Wireline Keeper	
5,853.0	15,297.0	Survey #2 MWD (Original Wellpath)	MWD SDI	MWD - Standard ver 1.0.1	

MD (usft)	Inc (°)	Azi (azimuth) (°)	TVD (usft)	N/S (usft)	EW (usft)	V. Sec (usft)	DLeg (°/100usft)
0.0	0.00	0.00	0.0	0.0	0.0	0.0	0.00
113.0	0.36	93.53	113.0	0.0	0.4	-0.2	0.32
213.0	0.12	88.55	213.0	0.0	0.8	-0.4	0.24
313.0	0.27	101.82	313.0	-0.1	1.1	-0.6	0.16
413.0	0.49	105.27	413.0	-0.2	1.8	-1.0	0.22
513.0	0.52	120.26	513.0	-0.6			0.14
613.0	0.49	114.17	613.0	-1.0			0.06
713.0	0.59	115.57	713.0	-1.4			0.10
813.0	0.69	107.89	813.0	-1.8			0.13
913.0	0.76	98.52	913.0	-2.1			0.14
1,013.0	0.95	96.96	1,013.0	-2.3	7.9	-5.5	0.19

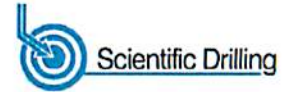
Received  
Office of Oil & Gas  
JUL 20 2015



17-06371



EOW Completion Report



<b>Company:</b>	Antero Resources	<b>Local Co-ordinate Reference:</b>	Well Washington Unit 2H
<b>Project:</b>	Doddridge County WV	<b>TVD Reference:</b>	Patterson 325: GL 1053' + 24' KB @ 1077.0usft
<b>Site:</b>	Fritz Pad: Hayden/Washington/Sheep/Hileman	<b>MD Reference:</b>	Patterson 325: GL 1053' + 24' KB @ 1077.0usft
<b>Well:</b>	Washington Unit 2H	<b>North Reference:</b>	Grid
<b>Wellbore:</b>	Original Wellpath	<b>Survey Calculation Method:</b>	Minimum Curvature
<b>Design:</b>	As Drilled	<b>Database:</b>	Oklahoma District

Survey									
MD (usft)	Inc (°)	Azi (azimuth) (°)	TVD (usft)	N/S (usft)	E/W (usft)	V. Sec (usft)	DLeg (°/100usft)		
1,113.0	1.00	102.92	1,112.9	-2.6	9.6	-6.5	0.11		
1,213.0	1.04	109.14	1,212.9	-3.1	11.3	-7.6	0.12		
1,313.0	0.92	106.93	1,312.9	-3.6	12.9	-8.8	0.13		
1,413.0	1.01	103.41	1,412.9	-4.0	14.6	-9.9	0.11		
1,513.0	1.27	108.66	1,512.9	-4.6	16.5	-11.2	0.28		
1,613.0	1.21	117.54	1,612.9	-5.4	18.5	-12.8	0.20		
1,713.0	1.14	113.46	1,712.8	-6.3	20.3	-14.4	0.11		
1,813.0	1.32	116.00	1,812.8	-7.2	22.3	-16.1	0.19		
1,913.0	1.13	116.18	1,912.8	-8.2	24.2	-17.8	0.19		
2,013.0	1.00	121.18	2,012.8	-9.0	25.8	-19.3	0.16		
2,113.0	0.88	112.06	2,112.8	-9.8	27.3	-20.6	0.19		
2,213.0	0.90	109.70	2,212.7	-10.3	28.7	-21.7	0.04		
2,313.0	0.93	116.08	2,312.7	-11.0	30.2	-22.9	0.11		
2,413.0	0.80	125.93	2,412.7	-11.7	31.5	-24.1	0.20		
2,513.0	0.86	117.33	2,512.7	-12.5	32.7	-25.3	0.14		
2,613.0	1.03	119.16	2,612.7	-13.3	34.2	-26.7	0.17		
2,713.0	1.00	128.40	2,712.7	-14.2	35.6	-28.2	0.17		
2,813.0	0.90	129.70	2,812.7	-15.3	36.9	-29.7	0.10		
2,913.0	0.91	130.81	2,912.7	-16.3	38.1	-31.1	0.02		
3,013.0	0.96	126.32	3,012.6	-17.3	39.4	-32.6	0.09		
3,113.0	0.82	128.91	3,112.6	-18.3	40.6	-34.0	0.15		
3,213.0	0.84	121.34	3,212.6	-19.1	41.8	-35.2	0.11		
3,313.0	0.90	132.44	3,312.6	-20.0	43.0	-36.6	0.18		
3,413.0	0.73	129.16	3,412.6	-20.9	44.1	-37.9	0.18		
3,513.0	0.95	131.84	3,512.6	-21.9	45.2	-39.2	0.22		
3,613.0	0.64	136.44	3,612.6	-22.9	46.2	-40.5	0.32		
3,713.0	0.97	126.19	3,712.6	-23.8	47.3	-41.8	0.36		
3,813.0	0.95	130.57	3,812.6	-24.8	48.6	-43.3	0.08		
3,913.0	1.05	132.92	3,912.5	-26.0	49.9	-44.9	0.11		
4,013.0	0.71	117.16	4,012.5	-26.9	51.1	-46.2	0.41		
4,113.0	1.04	118.49	4,112.5	-27.6	52.5	-47.5	0.33		
4,213.0	1.03	112.45	4,212.5	-28.4	54.1	-48.9	0.11		
4,313.0	1.27	114.87	4,312.5	-29.2	55.9	-50.4	0.24		
4,413.0	1.50	116.46	4,412.4	-30.2	58.1	-52.3	0.23		
4,513.0	1.60	116.02	4,512.4	-31.4	60.5	-54.4	0.10		
4,613.0	1.75	122.15	4,612.4	-32.8	63.1	-56.8	0.23		
4,713.0	1.83	125.13	4,712.3	-34.6	65.7	-59.5	0.12		
4,813.0	1.92	131.68	4,812.3	-36.6	68.2	-62.4	0.23		
4,913.0	1.36	137.38	4,912.2	-38.6	70.3	-65.1	0.58		
5,013.0	1.42	119.18	5,012.2	-40.1	72.2	-67.2	0.44		
5,113.0	1.12	115.63	5,112.2	-41.1	74.0	-69.4	0.31		
5,213.0	1.19	107.77	5,212.2	-41.8	75.9	-70.4	0.17		
5,313.0	1.17	117.31	5,312.1	-42.6	77.8	-72.0	0.20		
5,413.0	1.14	107.98	5,412.1	-43.4	79.8	-73.5	0.19		

Received  
Office of Oil & Gas  
JUL 20 2015

17-06371



EOW Completion Report



<b>Company:</b>	Antero Resources	<b>Local Co-ordinate Reference:</b>	Well Washington Unit 2H
<b>Project:</b>	Doddridge County WV	<b>TVD Reference:</b>	Patterson 325: GL 1053' + 24' KB @ 1077.0usft
<b>Site:</b>	Fritz Pad: Hayden/Washington/Sheep/Hileman	<b>MD Reference:</b>	Patterson 325: GL 1053' + 24' KB @ 1077.0usft
<b>Well:</b>	Washington Unit 2H	<b>North Reference:</b>	Grid
<b>Wellbore:</b>	Original Wellpath	<b>Survey Calculation Method:</b>	Minimum Curvature
<b>Design:</b>	As Drilled	<b>Database:</b>	Oklahoma District

MD (usft)	Inc (°)	Azi (azimuth) (°)	TVD (usft)	N/S (usft)	E/W (usft)	V. Sec (usft)	DLeg (°/100usft)
5,513.0	1.29	106.99	5,512.1	-44.0	81.8	-74.9	0.15
5,613.0	1.37	114.76	5,612.1	-44.9	83.9	-76.6	0.20
5,713.0	1.52	120.39	5,712.0	-46.0	86.2	-78.6	0.21
5,808.1	1.22	119.62	5,807.2	-47.2	88.1	-80.5	0.32
5,853.0	1.08	126.53	5,852.0	-47.7	88.9	-81.2	0.44
5,947.0	1.28	123.66	5,946.0	-48.8	90.5	-82.9	0.22
5,978.0	1.04	104.65	5,977.0	-49.0	91.0	-83.4	1.45
6,009.0	3.11	55.56	6,007.9	-48.6	92.0	-83.5	8.23
6,041.0	6.80	40.38	6,039.8	-46.7	94.0	-82.5	12.14
6,072.0	11.84	37.33	6,070.4	-42.8	97.1	-80.3	16.33
6,104.0	16.09	37.94	6,101.5	-36.7	101.8	-76.9	13.29
6,135.0	18.79	40.84	6,131.0	-29.5	107.7	-72.9	9.15
6,167.0	22.24	42.95	6,161.0	-21.2	115.2	-68.6	11.02
6,198.0	25.58	44.22	6,189.3	-12.1	123.9	-64.1	10.90
6,229.0	27.85	44.68	6,217.0	-2.1	133.6	-59.4	7.35
6,261.0	31.51	44.15	6,244.8	9.2	144.7	-53.9	11.47
6,292.0	34.83	43.03	6,270.8	21.5	156.4	-47.8	10.89
6,324.0	37.27	39.20	6,296.6	35.7	168.8	-40.3	10.38
6,355.0	39.55	32.70	6,320.9	51.3	180.0	-31.1	14.95
6,386.0	41.87	27.64	6,344.4	68.7	190.2	-19.7	13.01
6,418.0	43.44	24.06	6,368.0	88.3	199.6	-6.1	9.03
6,445.0	45.01	20.91	6,387.3	105.7	206.8	6.5	10.00
<b>Middlesex</b>							
6,449.0	45.25	20.46	6,390.1	108.3	207.8	8.5	10.00
6,481.0	48.15	16.28	6,412.1	130.4	215.1	25.3	13.13
6,512.0	51.40	12.82	6,432.1	153.3	221.0	43.4	13.51
6,543.0	54.98	8.95	6,450.7	177.7	225.7	63.4	15.27
6,575.0	57.61	6.11	6,468.4	204.1	229.2	85.7	11.05
6,606.0	59.11	4.60	6,484.7	230.3	231.6	108.4	6.37
6,637.0	60.96	2.72	6,500.2	257.1	233.4	131.8	7.95
6,660.0	63.02	0.11	6,511.0	277.4	233.9	150.0	13.43
<b>Burkett</b>							
6,668.0	63.75	359.23	6,514.6	284.6	233.8	156.4	13.43
6,700.0	66.29	355.04	6,528.1	313.5	232.4	183.2	14.28
6,731.0	68.84	351.01	6,539.9	342.0	228.9	210.4	14.56
6,740.0	69.41	350.29	6,543.1	350.3	227.5	218.5	9.79
<b>Tully</b>							
6,762.0	70.82	348.56	6,550.6	370.6	223.7	238.4	9.79
6,794.0	71.38	346.54	6,561.0	400.2	217.2	267.9	6.22
6,825.0	74.63	342.74	6,570.0	428.7	209.3	297.1	15.73
6,845.0	75.71	340.09	6,575.2	447.1	203.2	316.3	13.87
<b>Marcellus</b>							
6,856.0	76.31	338.65	6,577.8	457.1	199.4	326.9	13.87
6,888.0	76.70	336.74	6,585.3	485.8	187.6	358.0	5.93
6,919.0	78.85	335.55	6,591.9	513.5	175.3	388.3	7.89

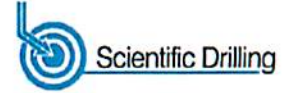
Received  
Office of Oil & Gas  
JUL 20 2015



17-06371



EOW Completion Report



<b>Company:</b>	Antero Resources	<b>Local Co-ordinate Reference:</b>	Well Washington Unit 2H
<b>Project:</b>	Doddridge County WV	<b>TVD Reference:</b>	Patterson 325: GL 1053' + 24' KB @ 1077.0usft
<b>Site:</b>	Fritz Pad: Hayden/Washington/Sheep/Hileman	<b>MD Reference:</b>	Patterson 325: GL 1053' + 24' KB @ 1077.0usft
<b>Well:</b>	Washington Unit 2H	<b>North Reference:</b>	Grid
<b>Wellbore:</b>	Original Wellpath	<b>Survey Calculation Method:</b>	Minimum Curvature
<b>Design:</b>	As Drilled	<b>Database:</b>	Oklahoma District

Survey							
MD (usft)	Inc (°)	Azi (azimuth) (°)	TVD (usft)	N/S (usft)	E/W (usft)	V. Sec (usft)	DLeg (°/100usft)
6,951.0	83.06	335.07	6,596.9	542.3	162.1	419.9	13.24
6,982.0	85.93	334.37	6,599.9	570.2	149.0	450.7	9.53
7,043.0	88.52	332.16	6,602.8	624.6	121.6	511.7	5.58
7,137.0	90.60	333.83	6,603.5	708.3	78.9	605.6	2.84
7,232.0	89.70	334.74	6,603.3	793.9	37.7	700.6	1.35
7,326.0	87.38	335.58	6,605.7	879.2	-1.8	794.6	2.62
7,420.0	87.71	335.48	6,609.7	964.6	-40.7	888.5	0.37
7,514.0	88.09	335.36	6,613.2	1,050.1	-79.8	982.4	0.42
7,608.0	88.46	335.98	6,616.0	1,135.7	-118.5	1,076.3	0.77
7,702.0	89.06	336.29	6,618.0	1,221.6	-156.5	1,170.3	0.72
7,797.0	87.28	333.96	6,621.1	1,307.7	-196.5	1,265.2	3.09
7,891.0	87.41	333.66	6,625.4	1,392.0	-237.9	1,359.1	0.35
7,985.0	88.59	332.21	6,628.7	1,475.7	-280.6	1,453.0	1.99
8,080.0	89.33	331.83	6,630.4	1,559.5	-325.2	1,547.9	0.88
8,174.0	89.73	331.42	6,631.2	1,642.2	-369.9	1,641.8	0.61
8,268.0	90.57	333.39	6,630.9	1,725.5	-413.4	1,735.7	2.28
8,362.0	89.53	334.26	6,630.9	1,809.9	-454.9	1,829.7	1.44
8,456.0	88.42	332.80	6,632.5	1,894.0	-496.8	1,923.6	1.95
8,550.0	89.13	334.56	6,634.5	1,978.3	-538.4	2,017.6	2.02
8,644.0	90.24	337.23	6,635.1	2,064.1	-576.8	2,111.6	3.08
8,738.0	89.06	336.78	6,635.6	2,150.6	-613.5	2,205.5	1.34
8,833.0	89.26	336.26	6,637.0	2,237.7	-651.4	2,300.4	0.59
8,927.0	89.29	336.66	6,638.2	2,323.9	-688.9	2,394.4	0.43
9,021.0	90.50	335.86	6,638.4	2,409.9	-726.8	2,488.3	1.54
9,115.0	90.00	333.69	6,638.0	2,495.0	-766.8	2,582.3	2.37
9,209.0	90.40	331.75	6,637.7	2,578.5	-809.9	2,676.2	2.11
9,303.0	91.04	332.46	6,636.5	2,661.6	-853.9	2,770.2	1.02
9,397.0	91.34	334.45	6,634.5	2,745.6	-895.9	2,864.1	2.14
9,492.0	91.71	334.01	6,632.0	2,831.2	-937.2	2,959.1	0.61
9,586.0	91.24	335.18	6,629.6	2,916.0	-977.5	3,053.0	1.34
9,680.0	90.07	335.66	6,628.5	3,001.5	-1,016.6	3,147.0	1.35
9,776.0	90.64	335.37	6,627.9	3,088.9	-1,056.4	3,243.0	0.67
9,871.0	91.04	335.05	6,626.5	3,175.1	-1,096.2	3,338.0	0.54
9,966.0	89.63	334.84	6,626.0	3,261.2	-1,136.4	3,433.0	1.50
10,055.0	89.19	334.32	6,626.9	3,341.5	-1,174.6	3,522.0	0.77
10,147.0	89.90	334.94	6,627.6	3,424.7	-1,214.0	3,614.0	1.02
10,237.0	90.00	334.47	6,627.7	3,506.0	-1,252.5	3,704.0	0.53
10,328.0	89.60	334.89	6,628.0	3,588.3	-1,291.4	3,795.0	0.64
10,420.0	88.92	333.47	6,629.2	3,671.1	-1,331.5	3,887.0	1.71
10,512.0	89.83	334.41	6,630.2	3,753.7	-1,371.9	3,978.9	1.42
10,603.0	87.78	332.59	6,632.1	3,835.2	-1,412.5	4,069.9	3.01
10,695.0	89.43	333.52	6,634.3	3,917.1	-1,454.2	4,161.9	2.06
10,786.0	88.59	332.73	6,635.9	3,998.3	-1,495.3	4,252.8	1.27
10,877.0	89.13	333.16	6,637.7	4,079.3	-1,536.7	4,343.7	0.76

Received  
Office of Oil & Gas  
JUL 20 2015

17-06371



EOW Completion Report



<b>Company:</b>	Antero Resources	<b>Local Co-ordinate Reference:</b>	Well Washington Unit 2H
<b>Project:</b>	Doddridge County WV	<b>TVD Reference:</b>	Patterson 325: GL 1053' + 24' KB @ 1077.0usft
<b>Site:</b>	Fritz Pad: Hayden/Washington/Sheep/Hileman	<b>MD Reference:</b>	Patterson 325: GL 1053' + 24' KB @ 1077.0usft
<b>Well:</b>	Washington Unit 2H	<b>North Reference:</b>	Grid
<b>Wellbore:</b>	Original Wellpath	<b>Survey Calculation Method:</b>	Minimum Curvature
<b>Design:</b>	As Drilled	<b>Database:</b>	Oklahoma District

MD (usft)	Inc (°)	Azi (azimuth) (°)	TVD (usft)	N/S (usft)	E/W (usft)	V. Sec (usft)	DLeg (°/100usft)
10,968.0	88.42	332.47	6,639.7	4,160.3	-1,578.2	4,434.7	1.09
11,060.0	88.09	333.69	6,642.5	4,242.2	-1,619.9	4,526.6	1.37
11,154.0	87.98	334.96	6,645.7	4,326.9	-1,660.6	4,620.6	1.36
11,248.0	89.50	336.45	6,647.7	4,412.6	-1,699.2	4,714.5	2.26
11,342.0	90.27	336.27	6,647.9	4,498.7	-1,736.9	4,808.5	0.84
11,436.0	88.19	336.49	6,649.2	4,584.8	-1,774.6	4,902.4	2.23
11,530.0	88.59	336.81	6,651.8	4,671.0	-1,811.8	4,996.3	0.54
11,624.0	88.62	336.71	6,654.1	4,757.4	-1,848.9	5,090.2	0.11
11,718.0	88.32	335.12	6,656.6	4,843.2	-1,887.2	5,184.1	1.72
11,813.0	90.37	334.47	6,657.7	4,929.1	-1,927.7	5,279.1	2.26
11,907.0	91.14	334.31	6,656.5	5,013.9	-1,968.3	5,373.1	0.84
12,001.0	89.83	334.53	6,655.7	5,098.7	-2,008.9	5,467.1	1.41
12,095.0	89.97	334.44	6,655.9	5,183.5	-2,049.4	5,561.1	0.18
12,189.0	90.07	333.74	6,655.8	5,268.0	-2,090.5	5,655.1	0.75
12,283.0	90.67	334.94	6,655.2	5,352.8	-2,131.2	5,749.1	1.43
12,377.0	90.03	335.34	6,654.6	5,438.1	-2,170.7	5,843.1	0.80
12,471.0	90.07	334.85	6,654.6	5,523.3	-2,210.3	5,937.1	0.52
12,565.0	90.13	334.42	6,654.4	5,608.3	-2,250.5	6,031.1	0.46
12,659.0	89.83	334.42	6,654.4	5,693.0	-2,291.1	6,125.1	0.32
12,754.0	89.66	334.18	6,654.9	5,778.6	-2,332.3	6,220.1	0.31
12,848.0	90.33	334.45	6,654.9	5,863.4	-2,373.1	6,314.1	0.77
12,942.0	90.40	333.94	6,654.3	5,948.0	-2,414.0	6,408.1	0.55
13,036.0	90.77	333.32	6,653.3	6,032.2	-2,455.7	6,502.1	0.77
13,130.0	90.13	334.25	6,652.6	6,116.5	-2,497.3	6,596.0	1.20
13,224.0	89.40	334.82	6,652.9	6,201.4	-2,537.7	6,690.0	0.99
13,318.0	88.86	334.55	6,654.4	6,286.3	-2,577.9	6,784.0	0.64
13,412.0	88.93	333.77	6,656.2	6,370.9	-2,618.8	6,878.0	0.83
13,506.0	91.58	335.49	6,655.8	6,455.9	-2,659.1	6,972.0	3.36
13,600.0	90.10	335.40	6,654.4	6,541.3	-2,698.2	7,066.0	1.58
13,694.0	90.40	335.21	6,654.0	6,626.7	-2,737.4	7,160.0	0.38
13,788.0	90.50	334.94	6,653.2	6,712.0	-2,777.0	7,254.0	0.31
13,882.0	89.63	334.68	6,653.1	6,797.0	-2,817.0	7,348.0	0.97
13,976.0	89.73	333.77	6,653.7	6,881.7	-2,857.9	7,441.9	0.97
14,071.0	90.40	333.83	6,653.6	6,966.9	-2,899.9	7,536.9	0.71
14,165.0	89.90	333.92	6,653.3	7,051.3	-2,941.3	7,630.9	0.54
14,259.0	90.30	334.01	6,653.1	7,135.8	-2,982.5	7,724.9	0.44
14,353.0	90.77	334.29	6,652.3	7,220.4	-3,023.5	7,818.9	0.58
14,447.0	90.50	332.85	6,651.2	7,304.5	-3,065.3	7,912.9	1.56
14,541.0	90.20	332.86	6,650.7	7,388.2	-3,108.2	8,006.9	0.32
14,635.0	90.47	335.58	6,650.1	7,472.8	-3,149.1	8,100.8	2.91
14,729.0	90.87	335.54	6,649.0	7,558.4	-3,188.0	8,194.8	0.43
14,823.0	89.56	335.38	6,648.6	7,643.9	-3,227.0	8,288.8	1.40
14,917.0	90.03	335.13	6,649.0	7,729.3	-3,266.4	8,382.8	0.57
15,012.0	91.04	335.72	6,648.1	7,815.7	-3,305.9	8,477.8	1.23
15,106.0	91.68	335.48	6,645.9	7,901.2	-3,344.7	8,571.7	0.73

Received  
Office of Oil & Gas  
JUL 20 2014



17-06371



EOW Completion Report



<b>Company:</b>	Antero Resources	<b>Local Co-ordinate Reference:</b>	Well Washington Unit 2H
<b>Project:</b>	Doddridge County WV	<b>TVD Reference:</b>	Patterson 325: GL 1053' + 24' KB @ 1077.0usft
<b>Site:</b>	Fritz Pad: Hayden/Washington/Sheep/Hileman	<b>MD Reference:</b>	Patterson 325: GL 1053' + 24' KB @ 1077.0usft
<b>Well:</b>	Washington Unit 2H	<b>North Reference:</b>	Grid
<b>Wellbore:</b>	Original Wellpath	<b>Survey Calculation Method:</b>	Minimum Curvature
<b>Design:</b>	As Drilled	<b>Database:</b>	Oklahoma District

MD (usft)	Inc (°)	Azi (azimuth) (°)	TVD (usft)	N/S (usft)	E/W (usft)	V. Sec (usft)	DLeg (°/100usft)
15,201.0	90.37	334.03	6,644.2	7,987.2	-3,385.2	8,666.7	2.06
15,243.0	90.20	333.53	6,644.0	8,024.8	-3,403.8	8,708.7	1.26
15,297.0	90.00	334.54	6,643.9	8,073.4	-3,427.4	8,762.7	1.91

Measured Depth (usft)	Vertical Depth (usft)	Local Coordinates		Comment
		+N/-S (usft)	+E/-W (usft)	
6,445.0	6,387.3	105.7	206.8	Middlesex
6,660.0	6,511.0	277.4	233.9	Burkett
6,740.0	6,543.1	350.3	227.5	Tully
6,845.0	6,575.2	447.1	203.2	Marcellus

Checked By: \_\_\_\_\_ Approved By: \_\_\_\_\_ Date: \_\_\_\_\_

Received  
Office of Oil & Gas  
JUL 20 2015

# Hydraulic Fracturing Fluid Product Component Information Disclosure

Job Start Date:	10/28/2014
Job End Date:	1/1/2015
State:	West Virginia
County:	Doddridge
API Number:	47-017-06371-00-00
Operator Name:	Antero Resources Corporation
Well Name and Number:	Washington Unit 2H
Longitude:	-80.83987200
Latitude:	39.23424700
Datum:	NAD83
Federal/Tribal Well:	NO
True Vertical Depth:	6,658
Total Base Water Volume (gal):	10,757,880
Total Base Non Water Volume:	477,815



17.06371

## Hydraulic Fracturing Fluid Composition:

Trade Name	Supplier	Purpose	Ingredients	Chemical Abstract Service Number (CAS #)	Maximum Ingredient Concentration in Additive (% by mass)**	Maximum Ingredient Concentration in HF Fluid (% by mass)**	Comments
Water	Antero Resources	Base Fluid					
			Water	7732-18-5	100.00000	90.19960	
Sand	J.S. Well Services, LLC	Proppant					
			Crystalline Silica, quartz	14808-60-7	100.00000	9.42242	
LGC-15	J.S. Well Services	Gelling Agents					
			Guar Gum	9000-30-0	50.00000	0.06813	
			Petroleum Distillates	64742-47-8	60.00000	0.06452	
			Suspending agent (solid)	14808-60-7	3.00000	0.01042	
			Surfactant	68439-51-0	3.00000	0.00409	
HCL Acid (12.6% 18.0%)	J.S. Well Services, LLC	Bulk Acid					
			Water	7732-18-5	87.50000	0.08978	
			Hydrogen Chloride	7647-01-0	18.00000	0.02145	
WFRA-405	J.S. Well Services	Friction Reducer					
			Water	7732-18-5	40.00000	0.02760	
			Anionic Polyacrylamide	Proprietary	40.00000	0.02760	
			Petroleum Distillates	64742-47-8	40.00000	0.02222	
			Ethoxylated alcohol blend	Proprietary	5.00000	0.00345	
			Crystalline Salt	12125-02-9	5.00000	0.00345	

Office of Oil & Gas  
 Received  
 JUL 20 2015



17-06371

SI-1100	U.S. Well Services	Scale Inhibitor				
			Di Water	7732-18-5	80.00000	0.01069
			Ethylene Glycol	107-21-1	40.00000	0.00604
			Potassium salt of diethylene triamine penta (methylene phosphonic acid)	15827-60-8	10.00000	0.00180
			2-Phosphonobutane 1,2,4 tricarboxylic salt	37971-36-1	10.00000	0.00172
			hexamethylenediamine tetra (methylene phosphonic acid)	38820-59-6	10.00000	0.00167
			Copolymer of Maleic and Acrylic acid	26677-99-6	10.00000	0.00158
			bis (hexamethylene) tramine penta (methylene phosphonic acid) - phosphate acid	40623-75-4	10.00000	0.00154
			Acrylic polymer	52255-49-9	5.00000	0.00067
K-BAC 1020	U.S. Well Services	Anti-Bacterial Agent				
			2,2-dibromo-3-nitropropionamide	10222-01-2	20.00000	0.00470
			Deionized Water	7732-18-5	28.00000	0.00269
AP One	U.S. Well Services	Gel Breakers				
			Ammonium Persulfate	7727-54-0	100.00000	0.00182
AI-301	U.S. Well Services	Acid Corrosion Inhibitors				
			Diethylene Glycol	111-46-6	30.00000	0.00014
			Methenamine	100-97-0	20.00000	0.00011
			Hydrogen Chloride	7647-01-0	10.00000	0.00005
			Polyethylene polyamine	68603-67-8	10.00000	0.00004
			Coco amine	61791-14-8	5.00000	0.00002

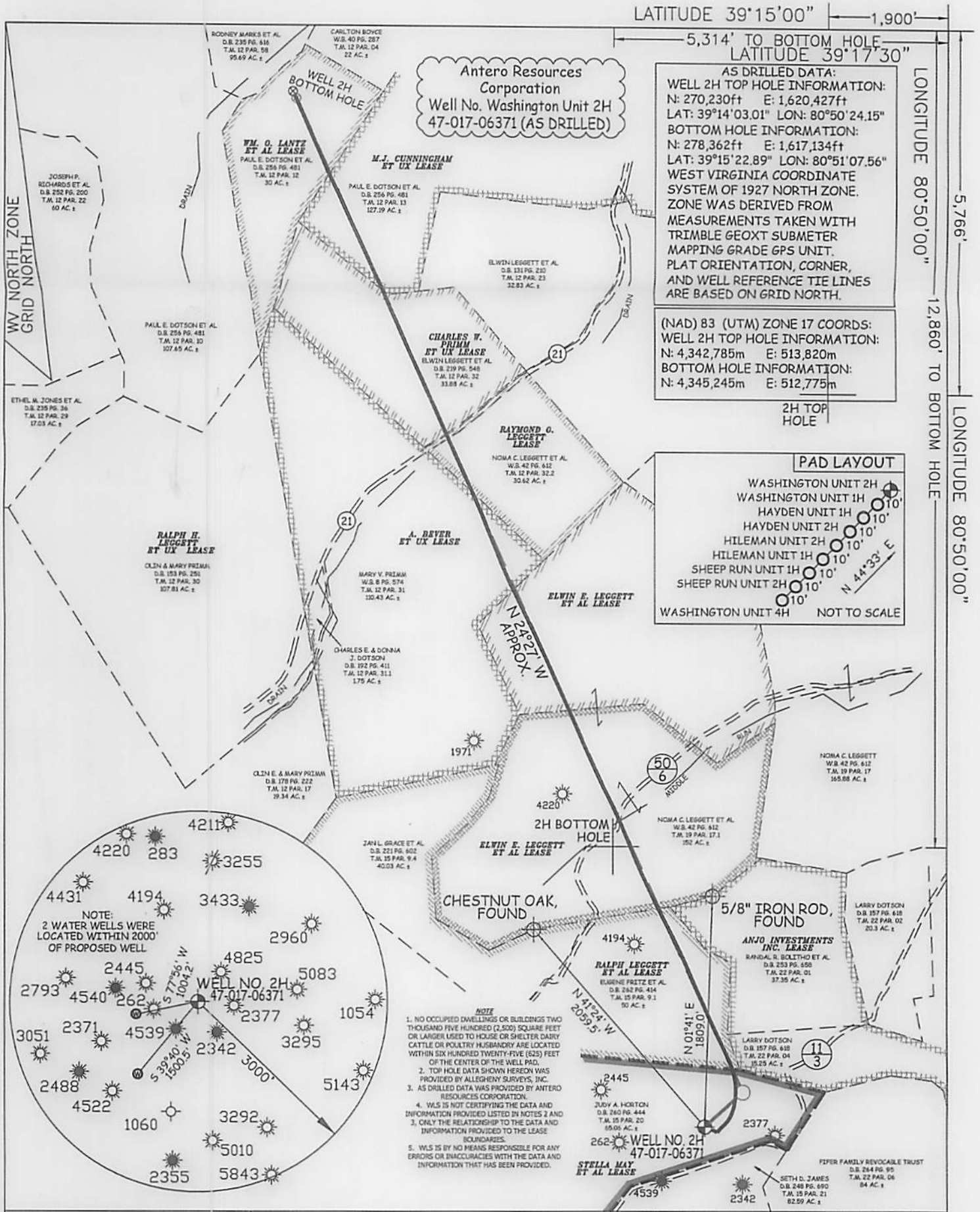
Ingredients shown above are subject to 29 CFR 1910.1200(i) and appear on Material Safety Data Sheets (MSDS). Ingredients shown below are Non-MSDS.

\* Total Water Volume sources may include fresh water, produced water, and/or recycled water  
 \*\* Information is based on the maximum potential for concentration and thus the total may be over 100%

Note: For Field Development Products (products that begin with FDP), MSDS level only information has been provided.  
 Ingredient information for chemicals subject to 29 CFR 1910.1200(i) and Appendix D are obtained from suppliers Material Safety Data Sheets (MSDS)

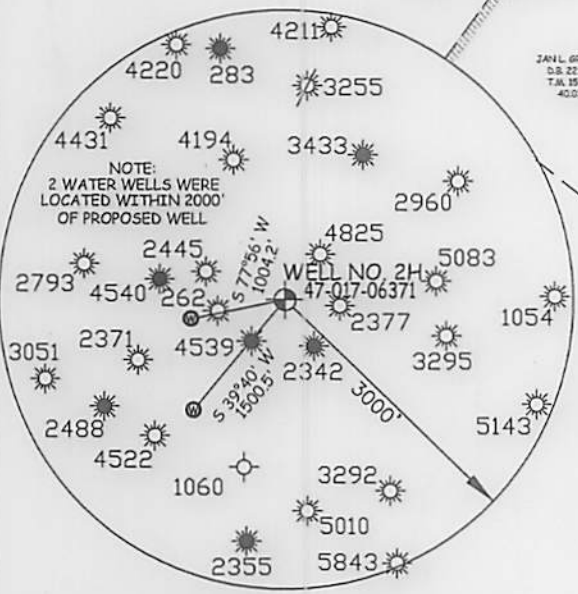
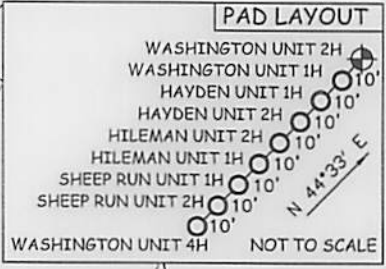
Received  
 Office of Oil & Gas  
 JUL 20 2015





AS DRILLED DATA:  
 WELL 2H TOP HOLE INFORMATION:  
 N: 270,230ft E: 1,620,427ft  
 LAT: 39°14'03.01" LON: 80°50'24.15"  
 BOTTOM HOLE INFORMATION:  
 N: 278,362ft E: 1,617,134ft  
 LAT: 39°15'22.89" LON: 80°51'07.56"  
 WEST VIRGINIA COORDINATE SYSTEM OF 1927 NORTH ZONE. ZONE WAS DERIVED FROM MEASUREMENTS TAKEN WITH TRIMBLE GEOXT SUBMETER MAPPING GRADE GPS UNIT. PLAT ORIENTATION, CORNER, AND WELL REFERENCE TIE LINES ARE BASED ON GRID NORTH.

(NAD) 83 (UTM) ZONE 17 COORDS:  
 WELL 2H TOP HOLE INFORMATION:  
 N: 4,342,785m E: 513,820m  
 BOTTOM HOLE INFORMATION:  
 N: 4,345,245m E: 512,775m



- NOTE**
1. NO OCCUPIED DWELLINGS OR BUILDINGS TWO THOUSAND FIVE HUNDRED (2,500) SQUARE FEET OR LARGER USED TO HOUSE OR SHELTER DAIRY CATTLE OR POULTRY HUSBANDRY ARE LOCATED WITHIN SIX HUNDRED TWENTY-FIVE (625) FEET OF THE CENTER OF THE WELL PAD.
  2. TOP HOLE DATA SHOWN HEREON WAS PROVIDED BY ALLEGHENY SURVEYS, INC.
  3. AS DRILLED DATA WAS PROVIDED BY ANTERO RESOURCES CORPORATION.
  4. WLS IS NOT CERTIFYING THE DATA AND INFORMATION PROVIDED LISTED IN NOTES 2 AND 3, ONLY THE RELATIONSHIP TO THE DATA AND INFORMATION PROVIDED TO THE LEASE BOUNDARIES.
  5. WLS IS BY NO MEANS RESPONSIBLE FOR ANY ERRORS OR INACCURACIES WITH THE DATA AND INFORMATION THAT HAS BEEN PROVIDED.

JOB # 13-065WA  
 DRAWING # WASHINGTON2HAD  
 SCALE 1" = 1000'  
 MINIMUM DEGREE OF ACCURACY SUBMETER  
 PROVEN SOURCE OF ELEV. SUBMETER MAPPING GRADE GPS



STATE OF WEST VIRGINIA, DIVISION OF ENVIRONMENTAL PROTECTION, OFFICE OF OIL AND GAS  
 WILLOW LAND SURVEYING PLLC  
 P.O. BOX 17  
 PENNSBORO, WV 26415

**LEGEND**

- Surface Owner Boundary Lines +/-
- - - Interior Surface Tracts +/-
- X Existing Fence
- Found monument, as noted
- Proposed Well Path
- As Drilled Well Path

STATE OF WEST VIRGINIA DEPARTMENT OF ENERGY DIVISION OF OIL AND GAS  
 WELL TYPE: OIL GAS  LIQUID INJECTION WASTE DISPOSAL  
 (IF "GAS") PRODUCTION  STORAGE DEEP SHALLOW   
 LOCATION: ELEVATION 1066' ORIGINAL - 1053' AS-DRILLED WATERSHED NORTH FORK HUGHES RIVER  
 QUADRANGLE OXFORD 7.5' (TOP HOLE) WEST UNION 7.5' (BOTTOM HOLE) DISTRICT CENTRAL COUNTY DODDRIDGE COUNTY  
 SURFACE OWNER JUDY A. HORTON ACREAGE 65.06 ACRES +/-  
 OIL & GAS ROYALTY OWNER STELLA MAY ET AL; RALPH LEGGETT ET AL; ELWIN E. LEGGETT ET AL; LEASE ACREAGE 65 ACRES+; 187 ACRES+; 79 ACRES+;  
 ELWIN E. LEGGETT ET AL; A. BEVER ET UX; RAYMOND O. LEGGETT; CHARLES W. PRIMM ET UX; M.J. CUNNINGHAM ET UX; WM. O. LANTZ ET AL 71 ACRES+; 113 ACRES+; 30 ACRES+; 24 ACRES+; 30 ACRES+  
 PROPOSED WORK: DRILL  CONVERT  DRILL DEEPER  REDRILL  FRACTURE OR STIMULATE   
 PLUG OFF OLD FORMATION  PERFORATE NEW FORMATION  OTHER PHYSICAL CHANGE IN WELL (SPECIFY)  AS DRILLED  
 TARGET FORMATION MARCELLUS ESTIMATED DEPTH 6,644' +/-  
 WELL OPERATOR ANTERO RESOURCES CORP. DESIGNATED AGENT DIANNA STAMPER  
 ADDRESS 1615 WYNKOOP STREET ADDRESS 5400 D BIG TYLER ROAD  
 DENVER, CO 80202 CHARLESTON, WV 25313

DATE 07/09/15  
 OPERATOR'S WELL # WASHINGTON UNIT #2H  
 API WELL # 47 - 017 - 06371  
 STATE COUNTY PERMIT  
 DATE 10/23/2015  
 COUNTY NAME PERMIT