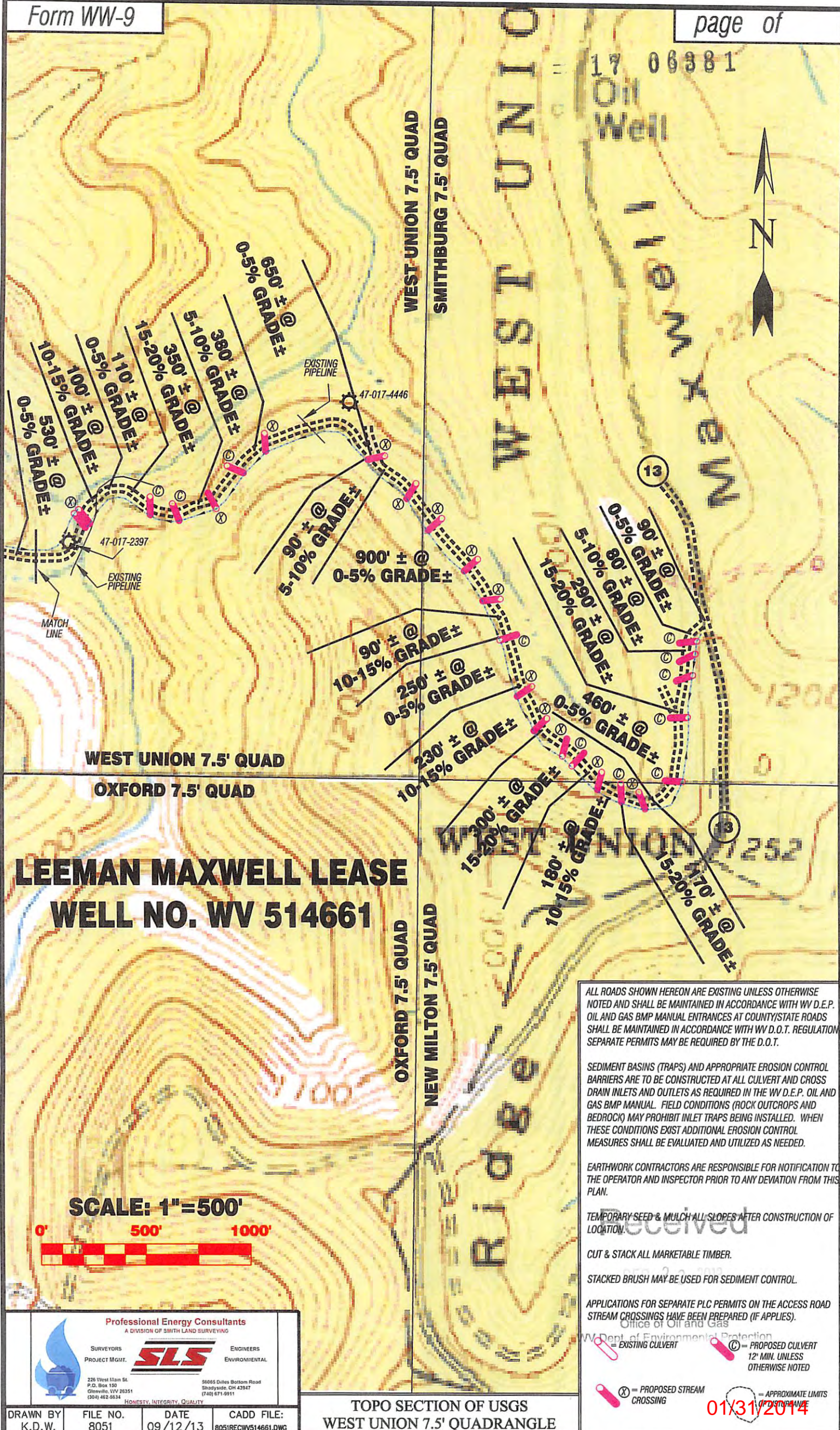






17 06381



**LEEMAN MAXWELL LEASE  
WELL NO. WV 514661**

ALL ROADS SHOWN HEREON ARE EXISTING UNLESS OTHERWISE NOTED AND SHALL BE MAINTAINED IN ACCORDANCE WITH WV D.E.P. OIL AND GAS BMP MANUAL ENTRANCES AT COUNTY/STATE ROADS SHALL BE MAINTAINED IN ACCORDANCE WITH WV D.O.T. REGULATION SEPARATE PERMITS MAY BE REQUIRED BY THE D.O.T.

SEDIMENT BASINS (TRAPS) AND APPROPRIATE EROSION CONTROL BARRIERS ARE TO BE CONSTRUCTED AT ALL CULVERT AND CROSS DRAIN INLETS AND OUTLETS AS REQUIRED IN THE WV D.E.P. OIL AND GAS BMP MANUAL. FIELD CONDITIONS (ROCK OUTCROPS AND BEDROCK) MAY PROHIBIT INLET TRAPS BEING INSTALLED. WHEN THESE CONDITIONS EXIST ADDITIONAL EROSION CONTROL MEASURES SHALL BE EVALUATED AND UTILIZED AS NEEDED.

EARTHWORK CONTRACTORS ARE RESPONSIBLE FOR NOTIFICATION TO THE OPERATOR AND INSPECTOR PRIOR TO ANY DEVIATION FROM THIS PLAN.

TEMPORARY SEED & MULCH ALL SLOPES AFTER CONSTRUCTION OF LOCATION.

CUT & STACK ALL MARKETABLE TIMBER.

STACKED BRUSH MAY BE USED FOR SEDIMENT CONTROL.

APPLICATIONS FOR SEPARATE PLC PERMITS ON THE ACCESS ROAD STREAM CROSSINGS HAVE BEEN PREPARED (IF APPLIES).

Office of Oil and Gas  
WV Dept. of Environmental Protection

= PROPOSED STREAM CROSSING  
 = EXISTING CULVERT  
 = PROPOSED CULVERT 12' MIN. UNLESS OTHERWISE NOTED  
 = APPROXIMATE LIMITS OF DISTURBANCE

**Professional Energy Consultants**  
A DIVISION OF SMITH LAND SURVEYING

**SLS**

SURVEYORS PROJECT MGMT. ENGINEERS ENVIRONMENTAL

226 West Main St.  
P.O. Box 150  
Glennville, WV 26031  
(304) 462-6634

58065 Dilles Bottom Road  
Shady Side, OH 43947  
(740) 671-9911

HONESTY. INTEGRITY. QUALITY

DRAWN BY K.D.W.	FILE NO. 8051	DATE 09/12/13	CADD FILE: 8051RECWW514661.DWG
--------------------	------------------	------------------	-----------------------------------

**TOPO SECTION OF USGS  
WEST UNION 7.5' QUADRANGLE**

01/31/2014