

EQT PRODUCTION COMPANY LEWIS MAXWELL LEASE 2654 ACRES± WELL NO. WV 512476

BOTTOM HOLE
WELL NO. WV 512476
STATE PLANE COORDINATES
(NORTH ZONE) NAD'27

N. 272,565.0
E. 1,632,225.0

LAT=(N) 39.241054
LONG=(W) 80.798517

UTM (NAD83)(METERS)

N. 4,343,555.9
E. 517,402.3

ZOE K. WALTERS
261.25 ACRES±

LANDING POINT
WELL NO. WV 512476
STATE PLANE COORDINATES
(NORTH ZONE) NAD'27

N. 266,791.8
E. 1,634,917.1

LAT=(N) 39.225311
LONG=(W) 80.788721

UTM (NAD83)(METERS)

N. 4,341,810.8
E. 518,251.8

WELL NO. WV 512476
STATE PLANE COORDINATES
(NORTH ZONE) NAD'27

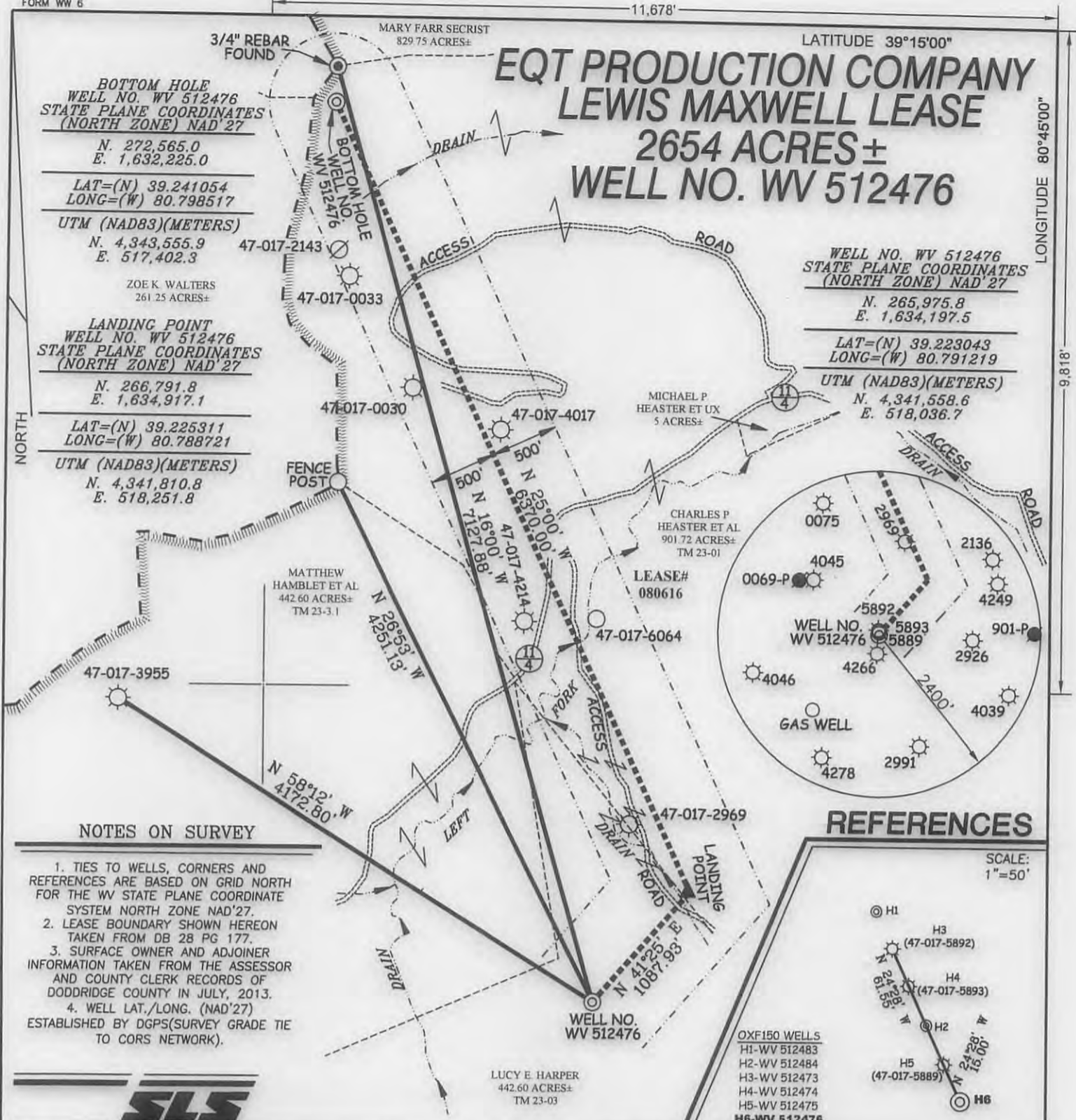
N. 265,975.8
E. 1,634,197.5

LAT=(N) 39.223043
LONG=(W) 80.791219

UTM (NAD83)(METERS)

N. 4,341,558.6
E. 518,036.7

NORTH



NOTES ON SURVEY

1. TIES TO WELLS, CORNERS AND REFERENCES ARE BASED ON GRID NORTH FOR THE WV STATE PLANE COORDINATE SYSTEM NORTH ZONE NAD'27.
2. LEASE BOUNDARY SHOWN HEREON TAKEN FROM DB 28 PG 177.
3. SURFACE OWNER AND ADJOINER INFORMATION TAKEN FROM THE ASSESSOR AND COUNTY CLERK RECORDS OF DODDRIDGE COUNTY IN JULY, 2013.
4. WELL LAT./LONG. (NAD'27) ESTABLISHED BY DGPS(SURVEY GRADE TIE TO CORS NETWORK).

REFERENCES

SCALE:
1"=50'



OXF150 WELLS
H1-WV 512483
H2-WV 512484
H3-WV 512473
H4-WV 512474
H5-WV 512475
H6-WV 512476



I THE UNDERSIGNED, HEREBY CERTIFY THAT THIS PLAT IS CORRECT TO THE BEST OF MY KNOWLEDGE AND BELIEF AND SHOWS ALL THE INFORMATION REQUIRED BY LAW AND THE REGULATIONS ISSUED AND PRESCRIBED BY THE DIVISION OF ENVIRONMENTAL PROTECTION.

P.S.
677

Gregory A. Smith



(+) DENOTES LOCATION OF WELL ON UNITED STATES TOPOGRAPHIC MAPS.

DATE AUGUST 29, 20 13

OPERATORS WELL NO. WV 512476

API WELL NO. 47-17-06390 H6A
STATE COUNTY PERMIT

MINIMUM DEGREE OF ACCURACY 1/200 FILE NO. 6980P512476R4(280-81)
PROVEN SOURCE OF ELEVATION DGPS (SURVEY GRADE TIE TO CORS NETWORK) SCALE 1" = 1000'

STATE OF WEST VIRGINIA
DIVISION OF ENVIRONMENTAL PROTECTION
OFFICE OF OIL AND GAS



WELL TYPE: OIL GAS LIQUID INJECTION WASTE DISPOSAL IF "GAS" PRODUCTION STORAGE DEEP SHALLOW

ELEVATION 1,259' (GROUND) 1,258' (PROPOSED) WATERSHED LEFT FORK ARNOLDS CREEK

DISTRICT WEST UNION COUNTY DODDRIDGE QUADRANGLE OXFORD 7.5'

SURFACE OWNER LUCY E. HARPER ACREAGE 442.60 ±

ROYALTY OWNER LEWIS MAXWELL HRS ACREAGE 2654 ±

PROPOSED WORK: DRILL CONVERT DRILL DEEPER REDRILL FRACTURE OR STIMULATE PLUG OFF OLD FORMATION PERFORATE NEW FORMATION PLUG AND ABANDON CLEAN OUT AND REPLUG OTHER

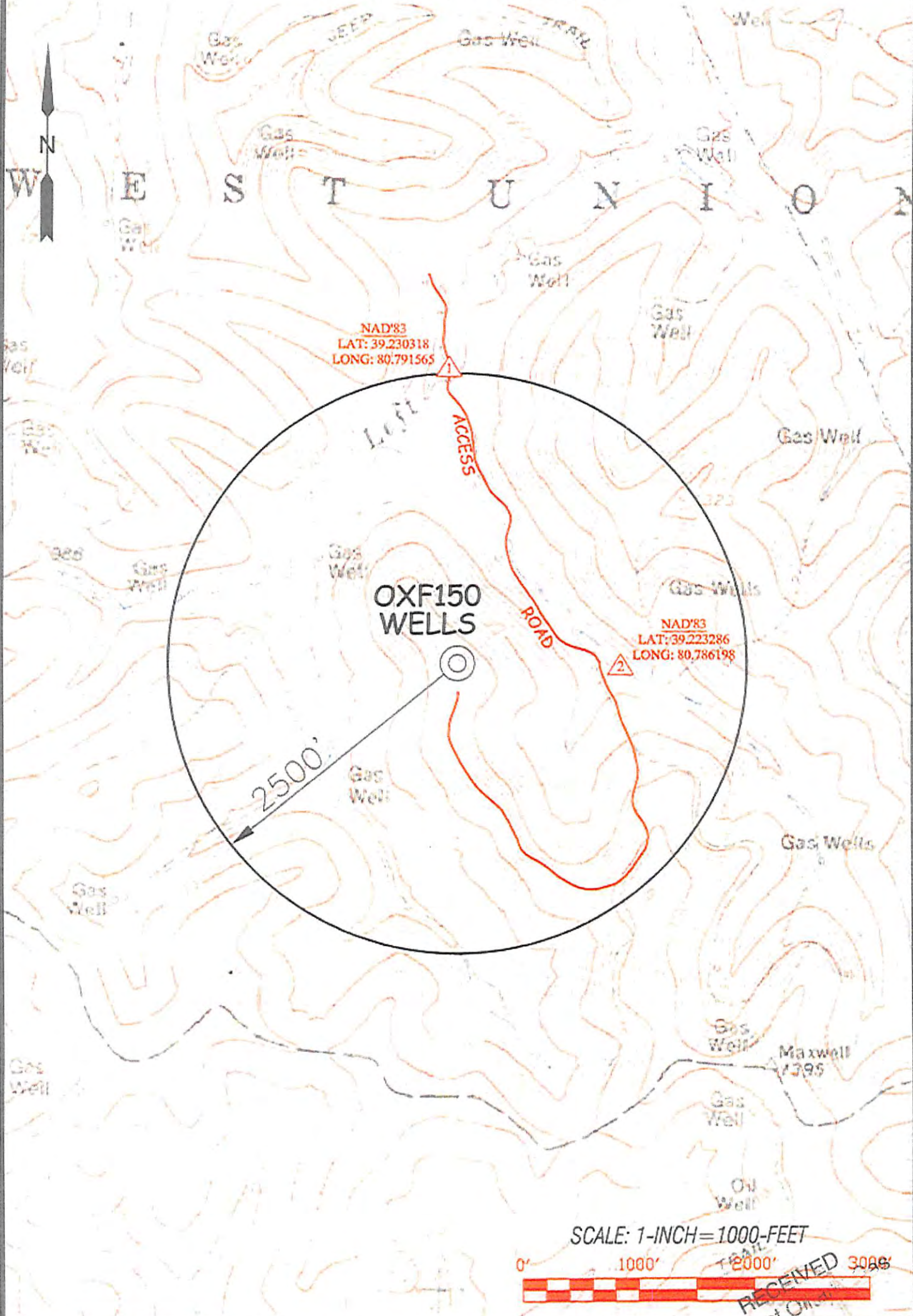
PHYSICAL CHANGE IN WELL (SPECIFY) _____ TARGET FORMATION MARCELLUS
ESTIMATED DEPTH _____

WELL OPERATOR EQT PRODUCTION COMPANY DESIGNATED AGENT REX C. RAY
ADDRESS 115 PROFESSIONAL PLACE P.O. BOX 280 BRIDGEPORT, WV 26330 ADDRESS 115 PROFESSIONAL PLACE P.O. BOX 280 BRIDGEPORT, WV 26330

01/17/2014

COUNTY NAME
PERMIT

LEWIS MAXWELL LEASE OXF150 WELLS



SCALE: 1-INCH=1000-FEET



RECEIVED
Office of Operations
SEP 23 2013
WV Department of Environmental Protection

Professional Energy Consultants
A DIVISION OF SLS
SLS
SOLUTIONS
FOR ENERGY
CONSULTANTS

DRAWN BY: K.D.W.
FILE NO.: 6980
DATE: 09/12/13
CADD FILE: 0909W51246.3R2

TOPO SECTION OF:
OXFORD, WV 7.5' QUAD

DISTRICT	COUNTY	TAX MAP-PARCEL NO.
WEST UNION	DODDRIDGE	23-3

OPERATOR:
EQT PRODUCTION COMPANY
115 PROFESSIONAL PLACE
P.O. BOX 280
BRIDGEPORT, WV 26330