

State of West Virginia
Department of Environmental Protection - Office of Oil and Gas
Well Operator's Report of Well Work

API 47-017-06398 County Doddridge District Grant
Quad Smithburg 7.5' Pad Name Chestnut Pad Field/Pool Name _____
Farm name Trustees Chestnut Grove Church Well Number McMillan Unit 2H
Operator (as registered with the OOG) Antero Resources Corporation
Address 1615 Wynkoop Street City Denver State CO Zip 80202

As Drilled location NAD 83/UTM Attach an as-drilled plat, profile view, and deviation survey
Top hole Northing 4,357,129m Easting 524,017m
Landing Point of Curve Northing 4,357,330.14m Easting 524,420.20m
Bottom Hole Northing 4,354,546m Easting 525,543m

Elevation (ft) 1,115' GL Type of Well New Existing Type of Report Interim Final
Permit Type Deviated Horizontal Horizontal 6A Vertical Depth Type Deep Shallow
Type of Operation Convert Deepen Drill Plug Back Redrilling Rework Stimulate
Well Type Brine Disposal CBM Gas Oil Secondary Recovery Solution Mining Storage Other _____
Type of Completion Single Multiple Fluids Produced Brine Gas NGL Oil Other _____
Drilled with Cable Rotary

Drilling Media Surface hole Air Mud Fresh Water Intermediate hole Air Mud Fresh Water Brine
Production hole Air Mud Fresh Water Brine
Mud Type(s) and Additive(s)
Air- Foam & 4% KCL
Mud- Polymer

Date permit issued 12/30/2013 Date drilling commenced 02/26/2014 Date drilling ceased 05/22/2014
Date completion activities began 08/01/2014 Date completion activities ceased 02/07/2015
Verbal plugging (Y/N) N/A Date permission granted N/A Granted by N/A

Please note: Operator is required to submit a plugging application within 5 days of verbal permission to plug

Freshwater depth(s) ft 67', 122' Open mine(s) (Y/N) depths No
Salt water depth(s) ft 900'; 1,143' Void(s) encountered (Y/N) depths None
Coal depth(s) ft None Identified Cavern(s) encountered (Y/N) depths None
Is coal being mined in area (Y/N) No

RECEIVED
Office of Oil and Gas
JUL 18 2015
Department of Environmental Protection

Reviewed by:
JL 7/24/15
08/14/2015

API 47-017 - 06398 Farm name Trustees Chestnut Grove Church Well number McMillan Unit 2H

CASING STRINGS	Hole Size	Casing Size	Depth	New or Used	Grade wt/ft	Basket Depth(s)	Did cement circulate (Y/N) * Provide details below*
Conductor	24"	20"	40'	New	133#; J-55	N/A	Yes
Surface	17 1/2"	13 3/8"	359'	New	48#; H-40	N/A	Yes
Coal							
Intermediate 1	12 1/4"	9 5/8"	2,500'	New	36#; J-55	N/A	Yes
Intermediate 2							
Intermediate 3							
Production	8 3/4" & 8 1/2"	5 1/2"	17,388'	New	23#; P-110	N/A	Yes
Tubing		2 3/8"	7,290'		4.7#; N-80	N/A	
Packer type and depth set		N/A					

Comment Details _____

CEMENT DATA	Class/Type of Cement	Number of Sacks	Slurry wt (ppg)	Yield (ft ³ /sks)	Volume (ft ³)	Cement Top (MD)	WOC (hrs)
Conductor	Class A	100 sx	15.6	1.18	38	0'	8 Hrs.
Surface	Class A	445 sx	15.6	1.18	249	0'	8 Hrs.
Coal							
Intermediate 1	Class A	996 sx	15.6	1.18	783	0'	8 Hrs.
Intermediate 2							
Intermediate 3							
Production	Class H	1,173 sx (Lead); 1,298 sx (Tail)	14.5 (Lead); 15.2 (Tail)	1.3 (Lead); 1.86 (Tail)	3,525	~500' into Intermediate Casing	8 Hrs.
Tubing							

Drillers TD (ft) 17,388' MD; 7,010' TVD (BHL); 7,016' TVD (Deepest Point Drilled) Loggers TD (ft) 17,340'
 Deepest formation penetrated Marcellus Plug back to (ft) N/A
 Plug back procedure N/A

Kick off depth (ft) 6,812'

**This is a subsequent well. Antero only runs wireline logs on one well on a multi-well pad (Hoskinson Unit 2H, API #47-017-06398). Please reference the wireline logs submitted with Form WR-35 for the Hoskinson Unit 2H. A Cement Bond Log has been included with this submittal.

Check all wireline logs run **
 caliper density deviated/directional induction neutron resistivity gamma ray temperature sonic

Well cored Yes No Conventional Sidewall Were cuttings collected Yes No

DESCRIBE THE CENTRALIZER PLACEMENT USED FOR EACH CASING STRING _____

Conductor- 0
 Surface- 1 above guide shoe, 1 above insert float, 1 every 4th joint to surface
 Intermediate- 1 above float joint, 1 above float collar, 1 every 4th joint to surface
 Production- 1 above float joint, 1 below float collar, 1 every 3rd joint to top of cement

RECEIVED
Office of Oil and Gas

WAS WELL COMPLETED AS SHOT HOLE Yes No DETAILS JUL 13 2015

WAS WELL COMPLETED OPEN HOLE? Yes No DETAILS WV Department of Environmental Protection

WERE TRACERS USED Yes No TYPE OF TRACER(S) USED _____

API 47- 017 - 06398 Farm name Trustees Chestnut Grove Church Well number McMillan Unit 2H

PRODUCING FORMATION(S)	DEPTHS	
Marcellus	6,948' (top) TVD	7,317' (top) MD

Please insert additional pages as applicable.

GAS TEST Build up Drawdown Open Flow OIL TEST Flow Pump

SHUT-IN PRESSURE Surface 3,550 psi Bottom Hole _____ psi DURATION OF TEST _____ hrs

OPEN FLOW Gas 12,974 mcfpd Oil 14 bpd NGL _____ bpd Water 1 bpd GAS MEASURED BY Estimated Orifice Pilot

LITHOLOGY/ FORMATION	TOP	BOTTOM	TOP	BOTTOM	DESCRIBE ROCK TYPE AND RECORD QUANTITY AND TYPE OF FLUID (FRESHWATER, BRINE, OIL, GAS, H ₂ S, ETC)
	DEPTH IN FT NAME TVD	DEPTH IN FT TVD	DEPTH IN FT MD	DEPTH IN FT MD	
	0		0		
	* PLEASE SEE ATTACHED EXHIBIT 3				

Please insert additional pages as applicable.

Drilling Contractor Frontier Drilling LLC
Address 562 Spring Run Road City Pennsboro State WV Zip 26415

Logging Company Rush Wellsite Services
Address 600 Alpha Drive City Canonsburg State PA Zip 15317

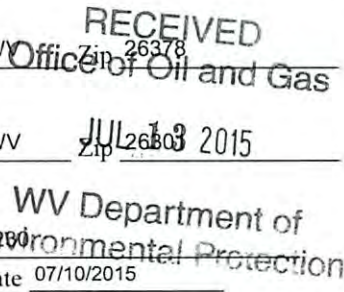
Cementing Company Nabors Completion & Production Services, Co.
Address 1650 Hackers Creek City Jane Lew State WV Zip 26378

Stimulating Company Baker Hughes
Address 837 Philippi Pike City Clarksburg State WV Zip 26303

Please insert additional pages as applicable.

Completed by Megan Darling Telephone 303-357-2900
Signature Megan C. Darling Title Permitting Agent Date 07/10/2015

Submittal of Hydraulic Fracturing Chemical Disclosure Information Attach copy of FRACFOCUS Registry



API 47-017-06398 Farm Name Trustees Chestnut Grove Church Well Number McMillan Unit 2H

EXHIBIT 1

Stage No.	Perforation Date	Perforated from MD ft.	Perforated to MD ft.	Number of Perforations	Formations
1	1-Aug-14	17,128	17,296	60	Marcellus
2	16-Oct-14	16,929	17,097	60	Marcellus
3	16-Oct-14	16,729	16,897	60	Marcellus
4	16-Oct-14	16,530	16,698	60	Marcellus
5	17-Oct-14	16,331	16,499	60	Marcellus
6	17-Oct-14	16,131	16,300	60	Marcellus
7	17-Oct-14	15,932	16,100	60	Marcellus
8	18-Oct-14	15,733	15,901	60	Marcellus
9	18-Oct-14	15,533	15,702	60	Marcellus
10	18-Oct-14	15,334	15,502	60	Marcellus
11	18-Oct-14	15,135	15,303	60	Marcellus
12	19-Oct-14	14,936	15,104	60	Marcellus
13	19-Oct-14	14,736	14,904	60	Marcellus
14	19-Oct-14	14,537	14,705	60	Marcellus
15	19-Oct-14	14,338	14,506	60	Marcellus
16	19-Oct-14	14,138	14,306	60	Marcellus
17	20-Oct-14	13,939	14,107	60	Marcellus
18	20-Oct-14	13,740	13,908	60	Marcellus
19	20-Oct-14	13,540	13,708	60	Marcellus
20	20-Oct-14	13,341	13,509	60	Marcellus
21	21-Oct-14	13,142	13,310	60	Marcellus
22	21-Oct-14	12,942	13,111	60	Marcellus
23	21-Oct-14	12,743	12,911	60	Marcellus
24	22-Oct-14	12,544	12,712	60	Marcellus
25	22-Oct-14	12,344	12,513	60	Marcellus
26	22-Oct-14	12,145	12,313	60	Marcellus
27	22-Oct-14	11,946	12,114	60	Marcellus
28	23-Oct-14	11,747	11,915	60	Marcellus
29	23-Oct-14	11,547	11,715	60	Marcellus
30	23-Oct-14	11,348	11,516	60	Marcellus
31	24-Oct-14	11,149	11,317	60	Marcellus
32	24-Oct-14	10,949	11,117	60	Marcellus
33	25-Oct-14	10,750	10,918	60	Marcellus
34	11-Dec-14	10,551	10,719	60	Marcellus
35	12-Dec-14	10,351	10,519	60	Marcellus
36	12-Dec-14	10,152	10,320	60	Marcellus
37	12-Dec-14	9,953	10,121	60	Marcellus
38	13-Dec-14	9,753	9,921	60	Marcellus
39	13-Dec-14	9,554	9,722	60	Marcellus
40	13-Dec-14	9,355	9,523	60	Marcellus
41	13-Dec-14	9,155	9,324	60	Marcellus
42	13-Dec-14	8,956	9,124	60	Marcellus
43	14-Dec-14	8,757	8,925	60	Marcellus
44	14-Dec-14	8,558	8,726	60	Marcellus
45	14-Dec-14	8,358	8,526	60	Marcellus
46	18-Dec-14	8,159	8,327	60	Marcellus
47	19-Dec-14	7,960	8,128	60	Marcellus
48	19-Dec-14	7,760	7,928	60	Marcellus
49	19-Dec-14	7,561	7,729	60	Marcellus
50	19-Dec-14	7,362	7,530	60	Marcellus

RECEIVED
Office of Oil and Gas

JUL 13 2015

WV Department of
Environmental Protection

08/14/2015

EXHIBIT 2

Stage No.	Stimulations Date	Avg Pump Rate	Avg Treatment Pressure (PSI)	Max Breakdown Pressure (PSI)	ISIP (PSI)	Amount of Proppant (lbs)	Amount of Water (bbls)	Amount of Nitrogen/ other (units)
1	15-Oct-14	77.0	7,526	5,790	5,246	236,166	6,820	N/A
2	16-Oct-14	76.0	7,526	5,687	5,187	232,730	6,809	N/A
3	16-Oct-14	74.0	7,151	5,663	5,400	235,490	6,744	N/A
4	16-Oct-14	78.0	7,151	5,860	4,978	236,856	6,755	N/A
5	17-Oct-14	80.0	7,164	5,594	4,972	232,493	6,704	N/A
6	17-Oct-14	80.0	7,186	5,467	4,816	230,763	6,686	N/A
7	17-Oct-14	84.0	7,379	5,534	5,237	233,189	6,714	N/A
8	18-Oct-14	78.0	7,398	5,262	5,325	218,525	6,610	N/A
9	18-Oct-14	83.0	7,450	5,315	5,557	234,814	6,623	N/A
10	18-Oct-14	75.0	7,058	5,698	5,509	232,931	6,528	N/A
11	18-Oct-14	78.0	7,287	5,860	5,575	233,628	6,565	N/A
12	19-Oct-14	79.0	7,230	5,770	5,265	235,082	6,546	N/A
13	19-Oct-14	79.0	7,329	5,792	5,646	232,935	6,501	N/A
14	19-Oct-14	79.0	7,228	5,500	5,560	236,058	6,562	N/A
15	19-Oct-14	76.0	7,007	5,409	5,019	236,945	6,439	N/A
16	19-Oct-14	80.0	7,010	5,412	5,410	236,193	6,465	N/A
17	20-Oct-14	80.0	7,146	5,505	5,137	234,291	6,442	N/A
18	20-Oct-14	77.0	7,165	5,477	5,348	239,051	6,519	N/A
19	20-Oct-14	74.4	7,097	5,776	5,518	168,320	6,293	N/A
20	20-Oct-14	74.4	7,097	5,776	5,518	168,320	6,293	N/A
21	21-Oct-14	79.0	6,905	5,481	5,641	242,927	6,460	N/A
22	21-Oct-14	78.0	6,983	5,532	5,461	232,020	6,193	N/A
23	21-Oct-14	75.6	6,968	5,648	4,740	234,177	6,383	N/A
24	22-Oct-14	78.3	7,016	5,274	4,856	237,093	6,391	N/A
25	22-Oct-14	79.0	6,917	5,800	5,117	234,810	6,265	N/A
26	22-Oct-14	80.0	6,888	5,713	5,130	234,413	6,286	N/A
27	22-Oct-14	77.8	6,870	5,286	5,261	236,556	6,354	N/A
28	23-Oct-14	77.5	6,961	5,374	5,396	384,880	6,308	N/A
29	23-Oct-14	78.9	7,053	5,581	5,234	381,416	6,645	N/A
30	23-Oct-14	81.9	7,098	5,899	5,481	384,520	6,259	N/A
31	24-Oct-14	77.6	6,983	5,598	5,619	383,731	6,252	N/A
32	24-Oct-14	77.0	6,991	5,413	5,445	255,430	6,112	N/A
33	25-Oct-14	81.0	7,186	6,046	N/A	225,314	6,136	N/A
34	11-Dec-14	79.0	6,917	NA	5,117	233,442	6,587	N/A
35	12-Dec-14	62.9	6,661	5,641	5,011	234,071	6,059	N/A
36	12-Dec-14	62.5	6,502	5,999	4,832	232,595	5,817	N/A
37	12-Dec-14	64.3	6,711	5,895	4,856	231,978	5,819	N/A
38	13-Dec-14	63.0	6,562	5,740	5,477	233,734	5,840	N/A
39	13-Dec-14	61.6	6,522	5,813	5,381	234,834	5,793	N/A
40	13-Dec-14	63.0	6,772	5,703	5,237	236,332	5,842	N/A
41	13-Dec-14	65.7	6,766	5,576	5,001	235,144	5,772	N/A
42	13-Dec-14	60.2	6,687	5,648	5,170	235,162	5,863	N/A
43	14-Dec-14	63.3	6,784	5,696	5,155	234,553	5,811	N/A
44	14-Dec-14	63.9	6,605	5,736	5,206	234,887	5,750	N/A
45	14-Dec-14	63.2	6,596	5,920	5,243	235,681	5,771	N/A
46	18-Dec-14	51.0	6,386	5,539	4,892	231,585	5,823	N/A
47	19-Dec-14	65.3	6,519	6,356	4,833	236,966	5,811	N/A
48	19-Dec-14	64.1	6,396	6,290	5,146	236,963	5,961	N/A
49	19-Dec-14	64.9	6,505	6,153	5,396	235,542	5,715	N/A
50	19-Dec-14	66.1	6,354	6,601	4,390	212,518	5,419	N/A
AVG=		73.3	6,953	5,696	5,223	12,178,054	313,115	TOTAL

RECEIVED
 Office of Oil and Gas
 JUL 13 2015
 WV Department of
 Environmental Protection

EXHIBIT 3

LITHOLOGY/ FORMATION	TOP DEPTH (TVD)	BOTTOM DEPTH (TVD)	TOP DEPTH (MD)	BOTTOM DEPTH (MD)
	From Surface	From Surface	From Surface	From Surface
Fresh Water	67'	N/A	67'	N/A
Fresh Water	122'	N/A	122'	N/A
Shale/Siltstone	0	257	0	257
Shale w/ Coal	est. 257	347	est. 257	347
Shale and Siltstone	est. 347	377	est. 347	377
Shale/Sandstone/Siltstone	est. 377	1,457	est. 377	1,457
Shale and Siltstone w/trace coal	est. 1457	1,487	est. 1457	1,487
Shale/Sandstone/Siltstone	est. 1487	1,637	est. 1487	1,637
Sandstone	est. 1637	1,757	est. 1637	1,757
Sandstone w/trace coal	est. 1757	1,787	est. 1757	1,787
Shale/Sandstone/Siltstone	est. 1787	2,056	est. 1787	2,056
Big Lime	2,056	2,200	2,056	2,200
Big Injun	2,200	2,629	2,200	2,629
Gantz Sand	2,629	2,773	2,629	2,774
Fifty Foot Sandstone	2,773	2,836	2,774	2,838
Gordon	2,836	3,205	2,838	3,225
Fifth Sandstone	3,205	3,238	3,225	3,260
Bayard	3,238	3,579	3,260	3,634
Warren	3,579	3,954	3,634	4,036
Speechley	3,954	4,189	4,036	4,286
Baltown	4,189	4,719	4,286	4,848
Bradford	4,719	5,204	4,848	5,359
Benson	5,204	5,452	5,359	5,624
Alexander	5,452	5,661	5,624	5,850
Elk	5,661	6,207	5,850	6,437
Rhinestreet	6,207	6,527	6,437	6,785
Sycamore	6,527	6,718	6,785	6,992
Middlesex	6,718	6,855	6,992	7,159
Burkett	6,855	6,882	7,159	7,199
Tully	6,882	6,948	7,199	7,317
Marcellus	6,948	NA	7,317	NA

*Please note Antero determines shallow formation tops based on mud logs that are only run on one well on a multi-well pad. The measured depth (MD) data on subsequent wells may be slightly different due to the well's unique departure.

RECEIVED
Office of Oil and Gas

JUL 13 2015

WV Department of
Environmental Protection

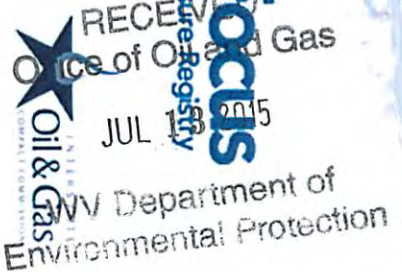
08/14/2015

Hydraulic Fracturing Fluid Product Component Information Disclosure

Job Start Date:	10/15/2014
Job End Date:	10/24/2014
State:	West Virginia
County:	Doddridge
API Number:	47-017-06398-00-00
Operator Name:	Antero Resources Corporation
Well Name and Number:	McMillan Unit 2H
Longitude:	-80.72121100
Latitude:	39.36328600
Datum:	NAD83
Federal/Tribal Well:	NO
True Vertical Depth:	7,016
Total Base Water Volume (gal):	13,846,392
Total Base Non Water Volume:	0

Hydraulic Fracturing Fluid Composition:

Trade Name	Supplier	Purpose	Ingredients	Chemical Service Number (CAS #)	Maximum Ingredient Concentration in Additive (% by mass)**	Maximum Ingredient Concentration in HF Fluid (% by mass)**	Comments
Water	Operator	Carrier	Water	7732-18-5	100.00000	90.66404	
Sand, White, 40/70	Baker Hughes	Proppant	MSDS and Non-MSDS Ingredients Listed Below	N/A		4.89844	
Sand, White, 20/40	Baker Hughes	Proppant	MSDS and Non-MSDS Ingredients Listed Below	N/A		3.22271	
Sand, White, 100 mesh	Baker Hughes	Proppant	MSDS and Non-MSDS Ingredients Listed Below	N/A		0.63677	
HCl, 10.1 - 15%	Baker Hughes	Acidizing	MSDS and Non-MSDS Ingredients Listed Below	N/A		0.22584	SmartCare Product
GW-3LDF	Baker Hughes	Gelling Agent	MSDS and Non-MSDS Ingredients Listed Below	N/A		0.11344	SmartCare Product
FRW-18	Baker Hughes	Friction Reducer	MSDS and Non-MSDS Ingredients Listed Below	N/A		0.07123	SmartCare Product
Enzyme G-NE	Baker Hughes	Breaker	MSDS and Non-MSDS Ingredients Listed Below	N/A		0.01619	SmartCare Product



	Potassium Chloride	7447-40-7	1.00000	0.00016
	2-butoxy-1-propanol	15821-83-7	0.10000	0.00011
	Polyoxyalkylenes	68951-67-7	30.00000	0.00011
	Fatty Acids	61790-12-3	10.00000	0.00004
	Modified Thiourea Polymer	68527-49-1	7.00000	0.00003
	Olefin	64743-02-8	5.00000	0.00002
	Propargyl Alcohol	107-19-7	5.00000	0.00002
	Formaldehyde	50-00-0	1.00000	0.00000

* Total Water Volume sources may include fresh water, produced water, and/or recycled water
 ** Information is based on the maximum potential for concentration and thus the total may be over 100%

Note: For Field Development Products (products that begin with FDP), MSDS level only information has been provided.
 Ingredient information for chemicals subject to 29 CFR 1910.1200(f) and Appendix D are obtained from suppliers Material Safety Data Sheets (MSDS)

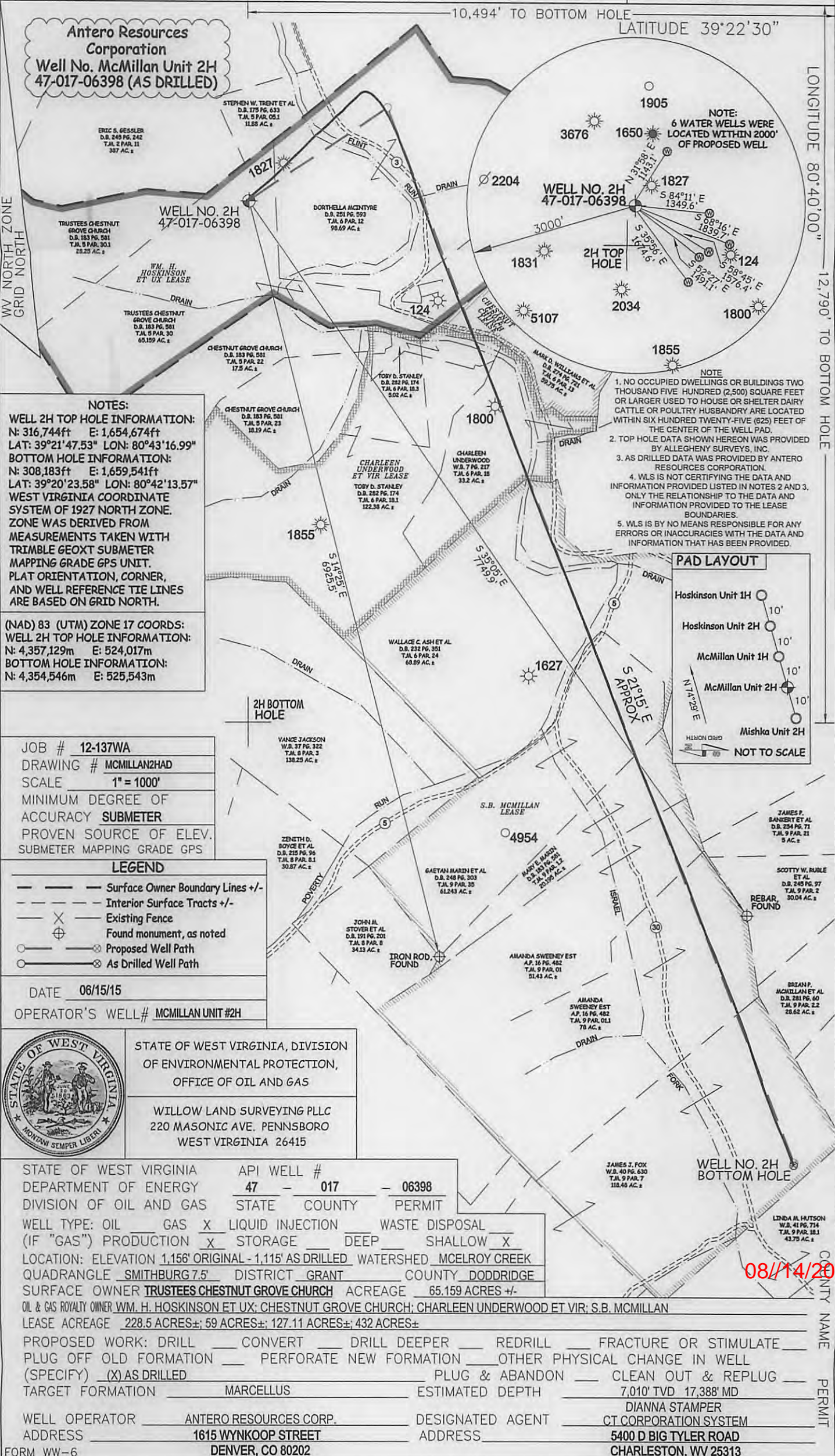
RECEIVED
 Office of Oil and Gas
 JUL 13 2015
 WV Department of
 Environmental Protection

08/14/2015

LATITUDE 39°22'30" 3,691'
 10,494' TO BOTTOM HOLE
 LATITUDE 39°22'30"

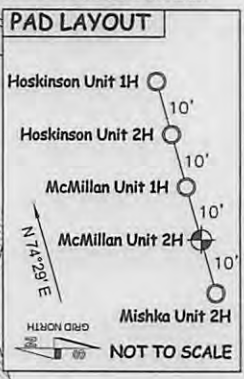
LONGITUDE 80°40'00" 4,297'
 LONGITUDE 80°42'30" 12,790' TO BOTTOM HOLE

Antero Resources Corporation
Well No. McMillan Unit 2H
47-017-06398 (AS DRILLED)



NOTE:
 6 WATER WELLS WERE
 LOCATED WITHIN 2000'
 OF PROPOSED WELL

NOTE
 1. NO OCCUPIED DWELLINGS OR BUILDINGS TWO THOUSAND FIVE HUNDRED (2,500) SQUARE FEET OR LARGER USED TO HOUSE OR SHELTER DAIRY CATTLE OR POULTRY HUSBANDRY ARE LOCATED WITHIN SIX HUNDRED TWENTY-FIVE (625) FEET OF THE CENTER OF THE WELL PAD.
 2. TOP HOLE DATA SHOWN HEREON WAS PROVIDED BY ALLEGHENY SURVEYS, INC.
 3. AS DRILLED DATA WAS PROVIDED BY ANTERO RESOURCES CORPORATION.
 4. WLS IS NOT CERTIFYING THE DATA AND INFORMATION PROVIDED LISTED IN NOTES 2 AND 3. ONLY THE RELATIONSHIP TO THE DATA AND INFORMATION PROVIDED TO THE LEASE BOUNDARIES.
 5. WLS IS BY NO MEANS RESPONSIBLE FOR ANY ERRORS OR INACCURACIES WITH THE DATA AND INFORMATION THAT HAS BEEN PROVIDED.



NOTES:
WELL 2H TOP HOLE INFORMATION:
 N: 316,744ft E: 1,654,674ft
 LAT: 39°21'47.53" LON: 80°43'16.99"
BOTTOM HOLE INFORMATION:
 N: 308,183ft E: 1,659,541ft
 LAT: 39°20'23.58" LON: 80°42'13.57"
 WEST VIRGINIA COORDINATE SYSTEM OF 1927 NORTH ZONE. ZONE WAS DERIVED FROM MEASUREMENTS TAKEN WITH TRIMBLE GEOXT SUBMETER MAPPING GRADE GPS UNIT. PLAT ORIENTATION, CORNER, AND WELL REFERENCE TIE LINES ARE BASED ON GRID NORTH.

(NAD) 83 (UTM) ZONE 17 COORDS:
WELL 2H TOP HOLE INFORMATION:
 N: 4,357,129m E: 524,017m
BOTTOM HOLE INFORMATION:
 N: 4,354,546m E: 525,543m

JOB # 12-137WA
 DRAWING # MCMILLAN2HAD
 SCALE 1" = 1000'
 MINIMUM DEGREE OF ACCURACY SUBMETER
 PROVEN SOURCE OF ELEV. SUBMETER MAPPING GRADE GPS

LEGEND
 - - - Surface Owner Boundary Lines +/-
 - - - Interior Surface Tracts +/-
 - - - Existing Fence
 ⊕ Found monument, as noted
 ⊙ Proposed Well Path
 ⊙ As Drilled Well Path

DATE 06/15/15
 OPERATOR'S WELL# MCMILLAN UNIT #2H

STATE OF WEST VIRGINIA, DIVISION OF ENVIRONMENTAL PROTECTION, OFFICE OF OIL AND GAS
 WILLOW LAND SURVEYING PLLC
 220 MASONIC AVE. PENNSBORO WEST VIRGINIA 26415

STATE OF WEST VIRGINIA DEPARTMENT OF ENERGY DIVISION OF OIL AND GAS
 API WELL # 47 - 017 - 06398
 STATE COUNTY PERMIT
 WELL TYPE: OIL GAS LIQUID INJECTION WASTE DISPOSAL
 (IF "GAS") PRODUCTION STORAGE DEEP SHALLOW
 LOCATION: ELEVATION 1,156' ORIGINAL -1,115' AS DRILLED WATERSHED MCELROY CREEK
 QUADRANGLE SMITHBURG 7.5 DISTRICT GRANT COUNTY DODDRIDGE
 SURFACE OWNER TRUSTEES CHESTNUT GROVE CHURCH ACREAGE 65.159 ACRES +/-
 OIL & GAS ROYALTY OWNER WM. H. HOSKINSON ET UX; CHESTNUT GROVE CHURCH; CHARLEEN UNDERWOOD ET VIR; S.B. MCMILLAN
 LEASE ACREAGE 228.5 ACRES±; 59 ACRES±; 127.11 ACRES±; 432 ACRES±

PROPOSED WORK: DRILL CONVERT DRILL DEEPER REDRILL FRACTURE OR STIMULATE
 PLUG OFF OLD FORMATION PERFORATE NEW FORMATION OTHER PHYSICAL CHANGE IN WELL (SPECIFY) AS DRILLED PLUG & ABANDON CLEAN OUT & REPLUG
 TARGET FORMATION MARCELLUS ESTIMATED DEPTH 7,010' TVD 17,388' MD
 WELL OPERATOR ANTERO RESOURCES CORP. DESIGNATED AGENT DIANNA STAMPER
 ADDRESS 1615 WYNKOOP STREET ADDRESS 5400 D.BIG TYLER ROAD
 DENVER, CO 80202 CHARLESTON, WV 25313

08/14/2015