

RECEIVED
Office of Oil and Gas
JUL 06 2015
Department of
Environmental Protection
07/24/2015

Administrative Data
Title No: 10-0-0000
TRM No: 10-0-0000
Magnetic North: 8.82°
Magnetic Field
Strength: 52,208.78 nT
Dip Angle: 66.75°
Scale: 3/22/2014
Model: Ge2010

To convert Magnetic North to Grid, Subtract 8.82°
To convert True North to Grid, Subtract 0.25°

Lettie Unit 2H
Doddridge County WV
Northing: 14238857.81
Easting: 1752529.29
As Drilled

WELL DETAILS: Lettie Unit 2H
Ground Level: 1270.0
Easting: 1752529.29
Latitude: 39° 12' 38.122" N
Longitude: 80° 36' 15.125" W

SITE DETAILS: Wagner Pad
Site Center: Lettie Unit 1H
Site Center Northing: 14238847.81
Easting: 1752529.48
Positional Uncertainty: 2.0
Convergence: 0.25
Local North: Grid

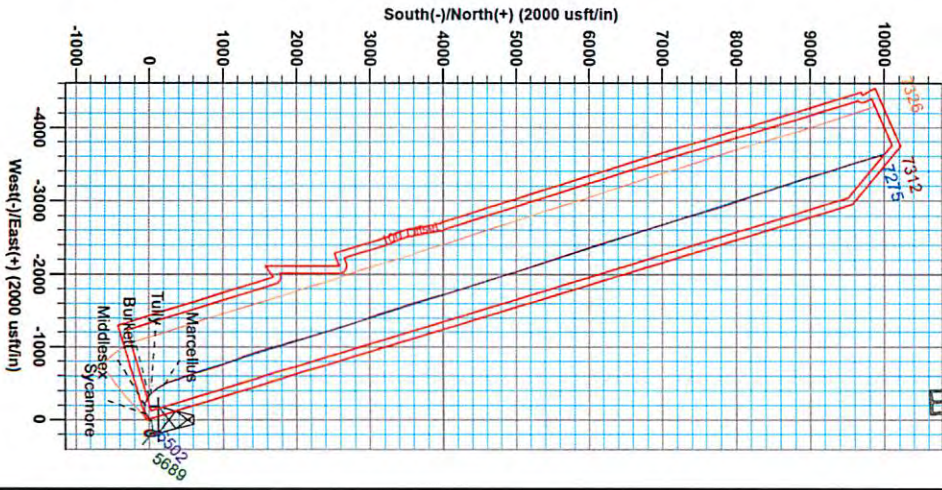
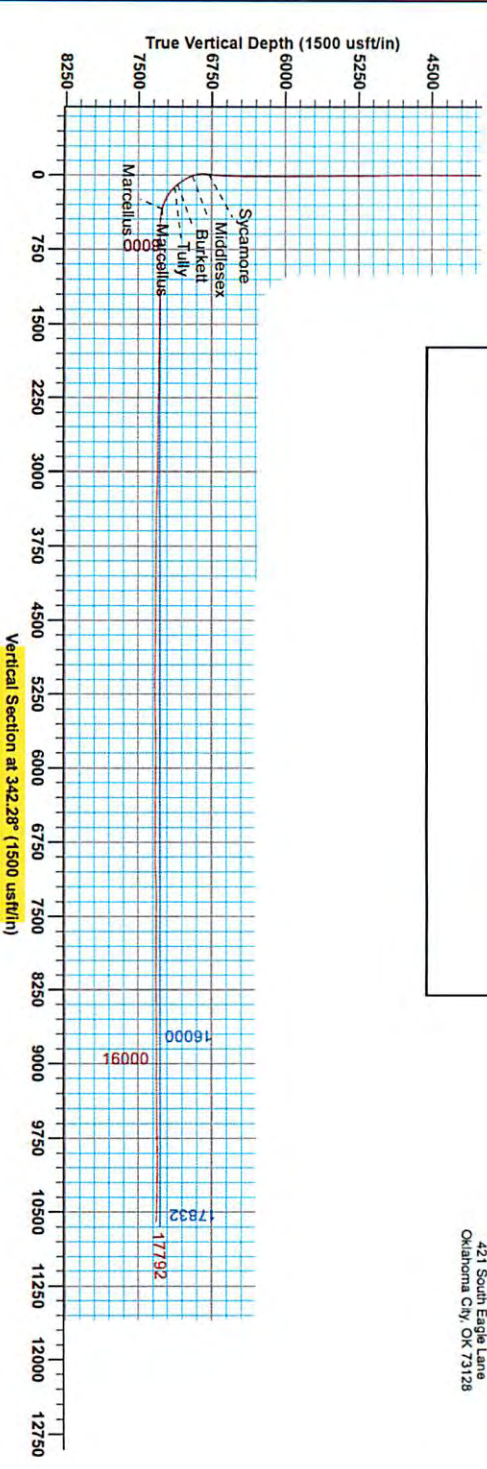
PROJECT DETAILS: Doddridge County WV
Geodetic System: Universal Transverse Mercator (US Survey Feet)
Datum: NAD 1983 (NADCON CONUS)
Ellipsoid: Clarke 1866
Zone: Zone 17N (84 W to 78 W)
System Datum: Mean Sea Level

PRECISION 523.1270 + 19.RK9 @ 1289 OADR
Gr.: 1270.0

LEGEND

- ▽ Downs Unit 1H, Original Wellpath, As Drilled VO
- Lettie Unit 1H, Original Wellpath, As Drilled VO
- Downs Unit 2H, Original Wellpath, As Drilled VO
- Lettie Unit 2H, Original Wellpath, Plan 6 VO
- As Drilled

Genie Lightfoot
11.34, June 17 2014
Scientific Drilling
421 South Eagle Lane
Okahoma City, OK 73128





Antero Resources

Doddridge County WV

Wagner Pad : Lettie/Downs/Bolte/Mason/McQuire

Lettie Unit 2H

Original Wellpath

Design: As Drilled

EOW Completion Report

17 June, 2014



Scientific Drilling

RECEIVED
Office of Oil and Gas

JUL 06 2015

WV Department of
Environmental Protection
07/24/2015

Company:	Antero Resources	Local Co-ordinate Reference:	Well Lettie Unit 2H
Project:	Doddridge County WV	TVD Reference:	Precision 523: 1270' + 19' RKB @ 1289.0usft
Site:	Wagner Pad : Lettie/Downs/Bolte/Mason/McQuire	MD Reference:	Precision 523: 1270' + 19' RKB @ 1289.0usft
Well:	Lettie Unit 2H	North Reference:	Grid
Wellbore:	Original Wellpath	Survey Calculation Method:	Minimum Curvature
Design:	As Drilled	Database:	Oklahoma District

Project	Doddridge County WV, McClellan District		
Map System:	Universal Transverse Mercator (US Survey Fee	System Datum:	Mean Sea Level
Geo Datum:	NAD 1927 (NADCON CONUS)		
Map Zone:	Zone 17N (84 W to 78 W)		

Site	Wagner Pad : Lettie/Downs/Bolte/Mason/McQuire				
Site Position:		Northing:	14,238,847.81 usft	Latitude:	39° 12' 38.023 N
From:	Map	Easting:	1,752,529.46usft	Longitude:	80° 36' 15.124 W
Position Uncertainty:	2.0 usft	Slot Radius:	13-3/16"	Grid Convergence:	0.25 °

Well	Lettie Unit 2H, Marcellus					
Well Position	+N/-S	0.0 usft	Northing:	14,238,857.81 usft	Latitude:	39° 12' 38.122 N
	+E/-W	0.0 usft	Easting:	1,752,529.29 usft	Longitude:	80° 36' 15.125 W
Position Uncertainty	2.0 usft		Wellhead Elevation:	1,289.0 usft	Ground Level:	1,270.0usft

Wellbore	Original Wellpath				
Magnetics	Model Name	Sample Date	Declination (°)	Dip Angle (°)	Field Strength (nT)
	IGRF2010	3/4/2014	-8.57	66.75	52,267

Design	As Drilled				
Audit Notes:					
Version:	1.0	Phase:	ACTUAL	Tie On Depth:	0.0
Vertical Section:	Depth From (TVD) (usft)	+N/-S (usft)	+E/-W (usft)	Direction (°)	
	0.0	0.0	0.0	342.28	

Survey Program	Date 6/17/2014				
From (usft)	To (usft)	Survey (Wellbore)	Tool Name	Description	
108.0	6,470.5	Survey #4 Final Gyro (Original Wellpath)	SDI Standard Keeper	Scientific Drilling Intl. Standard Wireline Keeper	
6,485.0	17,792.0	Survey #5 MWD (Original Wellpath)	SDI MWD	Scientific Drilling Intl. MWD - Standard ver 1.0.1	

MD (usft)	Inc (°)	Azi (azimuth) (°)	TVD (usft)	N/S (usft)	E/W (usft)	V. Sec (usft)	DLeg (°/100usft)
0.0	0.00	0.00	0.0	0.0	0.0	0.0	0.00
108.0	0.89	270.24	108.0	0.0	-0.8	0.3	0.82
208.0	0.60	272.42	208.0	0.0	-2.1	0.7	0.29
308.0	0.23	241.90	308.0	0.0	-2.8	0.8	0.42
408.0	0.15	256.62	408.0	-0.2	-3.1	0.8	0.09
508.0	0.08	70.78	508.0	-0.2	-3.2	0.8	0.23
608.0	0.09	274.20	608.0	-0.1	-3.2	0.9	0.17
708.0	0.06	275.88	708.0	-0.1	-3.3	0.9	0.03
808.0	0.14	280.91	808.0	-0.1	-3.5	1.0	0.08
908.0	0.14	300.66	908.0	0.0	-3.7	1.1	0.05
1,008.0	0.19	333.52	1,008.0	0.2	-3.9	1.4	0.10

RECEIVED
Office of Oil and Gas
JUL 06 2015
WV Department of Environmental Protection



EOW Completion Report



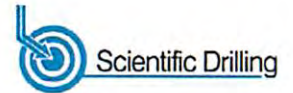
Company:	Antero Resources	Local Co-ordinate Reference:	Well Lettie Unit 2H
Project:	Doddridge County WV	TVD Reference:	Precision 523: 1270' + 19' RKB @ 1289.0usft
Site:	Wagner Pad : Lettie/Downs/Bolte/Mason/McQuire	MD Reference:	Precision 523: 1270' + 19' RKB @ 1289.0usft
Well:	Lettie Unit 2H	North Reference:	Grid
Wellbore:	Original Wellpath	Survey Calculation Method:	Minimum Curvature
Design:	As Drilled	Database:	Oklahoma District

Survey									
MD (usft)	Inc (°)	Azi (azimuth) (°)	TVD (usft)	N/S (usft)	E/W (usft)	V. Sec (usft)	DLeg (°/100usft)		
1,108.0	0.10	18.39	1,108.0	0.4	-4.0	1.6	0.14		
1,208.0	0.13	304.62	1,208.0	0.6	-4.0	1.8	0.14		
1,308.0	0.16	301.94	1,308.0	0.7	-4.2	2.0	0.03		
1,408.0	0.10	49.07	1,408.0	0.8	-4.3	2.1	0.21		
1,508.0	0.19	351.99	1,508.0	1.1	-4.3	2.3	0.16		
1,608.0	0.17	7.38	1,608.0	1.4	-4.3	2.6	0.05		
1,708.0	0.27	61.07	1,708.0	1.6	-4.0	2.8	0.22		
1,808.0	0.17	133.61	1,808.0	1.6	-3.7	2.7	0.27		
1,908.0	0.23	107.59	1,908.0	1.5	-3.4	2.5	0.11		
2,008.0	0.25	146.68	2,008.0	1.2	-3.1	2.1	0.16		
2,108.0	0.33	118.62	2,108.0	0.9	-2.7	1.7	0.16		
2,208.0	0.26	128.35	2,208.0	0.6	-2.3	1.3	0.09		
2,308.0	0.04	140.09	2,308.0	0.5	-2.1	1.1	0.22		
2,408.0	0.13	102.69	2,408.0	0.4	-2.0	1.0	0.10		
2,508.0	0.24	126.46	2,508.0	0.3	-1.7	0.8	0.13		
2,608.0	0.22	175.72	2,608.0	0.0	-1.5	0.4	0.19		
2,708.0	0.31	190.09	2,708.0	-0.5	-1.5	0.0	0.11		
2,808.0	0.33	200.97	2,808.0	-1.0	-1.7	-0.5	0.06		
2,908.0	0.28	206.82	2,908.0	-1.5	-1.9	-0.9	0.06		
3,008.0	0.34	219.22	3,008.0	-2.0	-2.2	-1.2	0.09		
3,108.0	0.35	228.31	3,108.0	-2.4	-2.6	-1.5	0.06		
3,208.0	0.33	213.99	3,208.0	-2.9	-3.0	-1.8	0.09		
3,308.0	0.34	206.13	3,308.0	-3.4	-3.3	-2.2	0.05		
3,408.0	0.32	209.48	3,408.0	-3.9	-3.6	-2.6	0.03		
3,508.0	0.26	229.81	3,508.0	-4.3	-3.9	-2.9	0.12		
3,608.0	0.26	237.56	3,608.0	-4.5	-4.2	-3.0	0.04		
3,708.0	0.25	237.56	3,708.0	-4.8	-4.6	-3.1	0.01		
3,808.0	0.06	269.19	3,808.0	-4.9	-4.9	-3.2	0.20		
3,908.0	0.08	227.83	3,908.0	-4.9	-5.0	-3.2	0.05		
4,008.0	0.06	319.77	4,008.0	-4.9	-5.1	-3.2	0.10		
4,108.0	0.06	273.85	4,108.0	-4.9	-5.1	-3.1	0.05		
4,208.0	0.09	35.24	4,208.0	-4.8	-5.1	-3.0	0.13		
4,308.0	0.25	57.81	4,308.0	-4.6	-4.9	-2.9	0.17		
4,408.0	0.35	66.07	4,408.0	-4.4	-4.4	-2.8	0.11		
4,508.0	0.54	58.95	4,508.0	-4.0	-3.8	-2.7	0.20		
4,608.0	0.75	45.99	4,607.9	-3.3	-2.9	-2.3	0.25		
4,708.0	0.76	40.40	4,707.9	-2.4	-2.0	-1.7	0.07		
4,808.0	0.82	28.95	4,807.9	-1.2	-1.2	-0.8	0.17		
4,908.0	0.85	24.40	4,907.9	0.1	-0.6	0.2	0.07		
5,008.0	0.87	27.10	5,007.9	1.4	0.1		0.05		
5,108.0	0.79	24.86	5,107.9	2.7	0.7		0.09		
5,208.0	0.87	28.10	5,207.9	4.0	1.4		0.09		
5,308.0	0.69	28.96	5,307.9	5.2	2.0		0.18		
5,408.0	0.68	27.35	5,407.9	6.3	2.6		0.02		

RECEIVED
Office of Oil and Gas
JUL 16 2015



EOW Completion Report



Company:	Antero Resources	Local Co-ordinate Reference:	Well Lettie Unit 2H
Project:	Doddridge County WV	TVD Reference:	Precision 523: 1270' + 19' RKB @ 1289.0usft
Site:	Wagner Pad : Lettie/Downs/Bolte/Mason/McQuire	MD Reference:	Precision 523: 1270' + 19' RKB @ 1289.0usft
Well:	Lettie Unit 2H	North Reference:	Grid
Wellbore:	Original Wellpath	Survey Calculation Method:	Minimum Curvature
Design:	As Drilled	Database:	Oklahoma District

Survey									
MD (usft)	Inc (°)	Azi (azimuth) (°)	TVD (usft)	N/S (usft)	E/W (usft)	V. Sec (usft)	DLeg (°/100usft)		
5,508.0	0.68	18.33	5,507.9	7.3	3.0	6.1	0.11		
5,608.0	0.72	24.50	5,607.9	8.5	3.5	7.0	0.09		
5,708.0	0.86	30.90	5,707.8	9.7	4.1	8.0	0.17		
5,808.0	0.54	30.92	5,807.8	10.7	4.8	8.8	0.32		
5,908.0	0.60	33.36	5,907.8	11.6	5.3	9.4	0.06		
6,008.0	0.43	50.85	6,007.8	12.3	5.9	9.9	0.23		
6,108.0	0.30	78.78	6,107.8	12.5	6.4	10.0	0.22		
6,208.0	0.38	84.69	6,207.8	12.6	7.0	9.9	0.09		
6,308.0	0.38	91.71	6,307.8	12.6	7.7	9.7	0.05		
6,408.0	0.38	92.29	6,407.8	12.6	8.3	9.5	0.00		
6,470.5	0.25	84.77	6,470.3	12.6	8.7	9.4	0.22		
6,506.0	2.11	228.22	6,505.8	12.2	8.3	9.1	6.52		
6,551.0	7.01	234.13	6,550.7	10.0	5.4	7.9	10.92		
6,596.0	12.93	238.24	6,595.0	5.8	-1.1	5.8	13.24		
6,641.0	17.65	239.23	6,638.4	-0.4	-11.2	3.1	10.50		
6,686.0	22.42	239.56	6,680.6	-8.2	-24.5	-0.4	10.60		
6,730.0	27.53	239.24	6,720.5	-17.7	-40.5	-4.5	11.62		
6,775.0	33.59	237.89	6,759.2	-29.6	-60.0	-10.0	13.55		
6,807.0	36.14	239.68	6,785.5	-39.1	-75.6	-14.2	8.58		
Sycamore									
6,820.0	37.18	240.34	6,795.9	-43.0	-82.4	-15.9	8.58		
6,865.0	37.02	252.74	6,831.8	-53.7	-107.1	-18.6	16.60		
6,909.0	38.04	261.83	6,866.8	-59.6	-133.2	-16.2	12.79		
6,954.0	38.95	270.85	6,902.0	-61.4	-161.1	-9.4	12.63		
6,999.0	39.73	277.94	6,936.8	-59.2	-189.5	1.3	10.13		
7,013.0	40.02	279.57	6,947.6	-57.8	-198.4	5.3	7.72		
Middlesex									
7,043.0	40.71	282.98	6,970.4	-54.0	-217.4	14.8	7.72		
7,088.0	42.27	288.83	7,004.2	-45.8	-246.1	31.3	9.28		
7,133.0	42.82	294.83	7,037.3	-34.5	-274.3	50.6	9.10		
7,177.0	43.57	301.12	7,069.4	-20.4	-300.9	72.2	9.93		
7,219.0	45.74	306.44	7,099.3	-3.9	-325.4	95.3	10.28		
Burkett									
7,222.0	45.90	306.80	7,101.4	-2.7	-327.1	97.0	10.28		
7,263.0	48.41	311.45	7,129.3	16.3	-350.4	122.2	10.33		
Tully									
7,267.0	48.67	311.88	7,131.9	18.3	-352.6	124.8	10.33		
7,312.0	52.41	317.52	7,160.5	42.8	-377.3	155.6	12.75		
7,356.0	56.93	320.91	7,186.0	69.9	-400.7	188.6	12.04		
7,401.0	62.43	323.85	7,208.7	100.7	-424.4	225.1	13.46		
7,446.0	67.38	327.03	7,227.8	134.3	-447.4	264.1	12.72		
7,490.0	71.75	330.35	7,243.1	169.5	-468.8	304.1	12.19		
7,534.0	76.22	333.31	7,255.3	206.8	-488.8	345.7	12.04		
Marcellus									
7,535.0	76.32	333.38	7,255.5	207.6	-489.2	346.7	12.04		

RECEIVED
 Office of Oil and Gas
 JUL 06 2015
 WV Department of Environmental Protection
 COMPASS 5000 Blvd
 07/24/2015



EOW Completion Report



Company:	Antero Resources	Local Co-ordinate Reference:	Well Lettie Unit 2H
Project:	Doddridge County WV	TVD Reference:	Precision 523: 1270' + 19' RKB @ 1289.0usft
Site:	Wagner Pad : Lettie/Downs/Bolte/Mason/McQuire	MD Reference:	Precision 523: 1270' + 19' RKB @ 1289.0usft
Well:	Lettie Unit 2H	North Reference:	Grid
Wellbore:	Original Wellpath	Survey Calculation Method:	Minimum Curvature
Design:	As Drilled	Database:	Oklahoma District

Survey								
MD (usft)	Inc (°)	Azi (azimuth) (°)	TVD (usft)	N/S (usft)	E/W (usft)	V. Sec (usft)	DLeg (°/100usft)	
7,580.0	80.20	336.68	7,264.7	247.6	-507.8	390.4	11.22	
7,625.0	84.24	340.55	7,270.8	289.1	-524.1	434.9	12.38	
7,684.0	88.59	343.09	7,274.5	345.0	-542.4	493.7	8.53	
7,738.0	89.43	342.83	7,275.4	396.6	-558.2	547.7	1.63	
7,774.0	89.80	342.20	7,275.6	430.9	-569.1	583.7	2.03	
7,863.0	89.50	342.62	7,276.2	515.8	-595.9	672.7	0.58	
7,953.0	90.94	342.13	7,275.8	601.6	-623.2	762.7	1.69	
8,042.0	90.67	342.23	7,274.6	686.3	-650.4	851.7	0.32	
8,132.0	89.09	342.45	7,274.8	772.0	-677.7	941.7	1.77	
8,221.0	89.56	341.56	7,275.8	856.7	-705.2	1,030.7	1.13	
8,311.0	89.60	340.76	7,276.5	941.8	-734.3	1,120.7	0.89	
8,400.0	89.53	339.14	7,277.2	1,025.4	-764.8	1,209.6	1.82	
8,490.0	89.50	337.72	7,277.9	1,109.1	-797.9	1,299.4	1.58	
8,579.0	89.39	337.55	7,278.8	1,191.4	-831.7	1,388.1	0.23	
8,668.0	88.82	338.75	7,280.2	1,274.0	-864.9	1,476.8	1.49	
8,758.0	89.36	340.40	7,281.6	1,358.4	-896.3	1,566.7	1.93	
8,847.0	89.53	341.54	7,282.5	1,442.5	-925.3	1,655.7	1.30	
8,937.0	89.60	343.00	7,283.1	1,528.2	-952.7	1,745.7	1.62	
9,026.0	88.83	343.67	7,284.4	1,613.5	-978.2	1,834.7	1.15	
9,116.0	89.33	343.94	7,285.8	1,699.9	-1,003.3	1,924.6	0.63	
9,205.0	89.43	344.06	7,286.8	1,785.4	-1,027.8	2,013.6	0.18	
9,295.0	89.09	344.01	7,287.9	1,872.0	-1,052.6	2,103.5	0.38	
9,385.0	89.19	343.68	7,289.3	1,958.4	-1,077.6	2,193.5	0.38	
9,474.0	88.22	343.83	7,291.3	2,043.8	-1,102.5	2,282.4	1.10	
9,564.0	89.77	344.57	7,292.9	2,130.4	-1,127.0	2,372.3	1.91	
9,653.0	89.60	343.95	7,293.4	2,216.1	-1,151.2	2,461.3	0.72	
9,743.0	89.36	343.56	7,294.2	2,302.5	-1,176.3	2,551.3	0.51	
9,832.0	89.02	342.26	7,295.4	2,387.5	-1,202.5	2,640.2	1.51	
9,922.0	90.33	342.73	7,295.9	2,473.3	-1,229.6	2,730.2	1.55	
10,011.0	89.97	341.81	7,295.7	2,558.1	-1,256.7	2,819.2	1.11	
10,101.0	89.87	341.82	7,295.8	2,643.6	-1,284.8	2,909.2	0.11	
10,190.0	89.43	341.95	7,296.4	2,728.2	-1,312.4	2,998.2	0.52	
10,279.0	88.42	340.80	7,298.1	2,812.5	-1,340.8	3,087.2	1.72	
10,369.0	87.81	340.23	7,301.0	2,897.3	-1,370.9	3,177.1	0.93	
10,458.0	88.35	340.71	7,304.0	2,981.2	-1,400.6	3,266.0	0.81	
10,547.0	87.95	340.45	7,306.9	3,065.1	-1,430.2	3,354.9	0.54	
10,637.0	88.49	340.43	7,309.7	3,149.8	-1,460.3	3,444.8	0.60	
10,726.0	90.23	342.75	7,310.7	3,234.3	-1,488.4	3,533.8	3.26	
10,816.0	89.09	341.85	7,311.2	3,320.0	-1,515.7	3,623.8	1.61	
10,905.0	89.63	342.73	7,312.2	3,404.8	-1,542.8	3,714.8	1.16	
10,995.0	88.86	341.52	7,313.4	3,490.4	-1,570.4	3,805.8	1.59	
11,084.0	89.06	339.96	7,315.0	3,574.4	-1,599.8	3,891.7	1.77	
11,174.0	89.97	342.85	7,315.7	3,659.7	-1,628.5	3,981.7	3.37	
11,263.0	90.07	343.49	7,315.7	3,744.9	-1,654.3	4,070.7	0.73	
11,353.0	89.43	344.31	7,316.1	3,831.4	-1,679.2	4,160.7	1.16	

RECEIVED
 Office of Oil and Gas
 JUL 06 2015
 WV Department of
 Environmental Protection
 07/24/2015



EOW Completion Report



Company:	Antero Resources	Local Co-ordinate Reference:	Well Lettie Unit 2H
Project:	Doddridge County WV	TVD Reference:	Precision 523: 1270' + 19' RKB @ 1289.0usft
Site:	Wagner Pad : Lettie/Downs/Bolte/Mason/McQuire	MD Reference:	Precision 523: 1270' + 19' RKB @ 1289.0usft
Well:	Lettie Unit 2H	North Reference:	Grid
Wellbore:	Original Wellpath	Survey Calculation Method:	Minimum Curvature
Design:	As Drilled	Database:	Oklahoma District

MD (usft)	Inc (°)	Azi (azimuth) (°)	TVD (usft)	N/S (usft)	E/W (usft)	V. Sec (usft)	DLeg (°/100usft)
11,442.0	89.63	345.15	7,316.8	3,917.2	-1,702.6	4,249.6	0.97
11,532.0	89.03	344.86	7,317.9	4,004.1	-1,725.9	4,339.5	0.74
11,622.0	89.87	345.07	7,318.8	4,091.1	-1,749.3	4,429.4	0.96
11,711.0	90.54	343.09	7,318.4	4,176.6	-1,773.7	4,518.3	2.35
11,801.0	89.87	341.87	7,318.1	4,262.5	-1,800.8	4,608.3	1.55
11,895.0	89.53	342.48	7,318.6	4,351.9	-1,829.6	4,702.3	0.74
11,989.0	88.82	341.34	7,320.0	4,441.3	-1,858.7	4,796.3	1.43
12,084.0	88.12	340.89	7,322.5	4,531.1	-1,889.5	4,891.3	0.88
12,179.0	89.20	341.61	7,324.7	4,621.1	-1,920.0	4,986.2	1.37
12,273.0	90.40	343.90	7,325.0	4,710.8	-1,947.9	5,080.2	2.75
12,368.0	89.63	343.59	7,325.0	4,802.0	-1,974.5	5,175.2	0.87
12,462.0	91.65	343.75	7,324.0	4,892.2	-2,000.9	5,269.1	2.16
12,556.0	91.21	342.47	7,321.6	4,982.2	-2,028.2	5,363.1	1.44
12,650.0	90.74	342.03	7,320.0	5,071.7	-2,056.8	5,457.1	0.68
12,743.0	90.67	341.19	7,318.9	5,159.9	-2,086.2	5,550.1	0.91
12,837.0	89.76	340.11	7,318.5	5,248.6	-2,117.3	5,644.0	1.50
12,931.0	90.34	341.97	7,318.4	5,337.5	-2,147.9	5,738.0	2.07
13,021.0	90.64	341.83	7,317.7	5,423.0	-2,175.8	5,828.0	0.37
13,110.0	90.20	341.99	7,317.0	5,507.6	-2,203.5	5,917.0	0.53
13,200.0	89.83	341.55	7,317.0	5,593.1	-2,231.6	6,007.0	0.64
13,289.0	89.77	341.19	7,317.3	5,677.4	-2,260.0	6,096.0	0.41
13,379.0	89.03	340.78	7,318.3	5,762.5	-2,289.4	6,185.9	0.94
13,469.0	89.70	342.37	7,319.3	5,847.9	-2,317.8	6,275.9	1.92
13,558.0	89.90	342.11	7,319.6	5,932.7	-2,345.0	6,364.9	0.37
13,648.0	90.50	341.36	7,319.2	6,018.1	-2,373.2	6,454.9	1.07
13,738.0	89.97	342.77	7,318.9	6,103.8	-2,400.9	6,544.9	1.67
13,827.0	89.25	341.34	7,319.5	6,188.4	-2,428.3	6,633.9	1.80
13,917.0	89.60	343.19	7,320.4	6,274.1	-2,455.7	6,723.9	2.09
14,007.0	89.90	342.65	7,320.8	6,360.2	-2,482.1	6,813.9	0.69
14,096.0	90.07	342.80	7,320.8	6,445.2	-2,508.6	6,902.9	0.25
14,186.0	90.74	342.21	7,320.2	6,531.0	-2,535.6	6,992.9	0.99
14,276.0	92.86	342.74	7,317.3	6,616.8	-2,562.7	7,082.8	2.43
14,365.0	92.24	343.18	7,313.4	6,701.8	-2,588.8	7,171.7	0.85
14,455.0	90.47	342.79	7,311.3	6,787.8	-2,615.1	7,261.7	2.01
14,545.0	89.52	342.13	7,311.3	6,873.6	-2,642.2	7,351.7	1.29
14,634.0	89.76	343.31	7,311.8	6,958.6	-2,668.7	7,440.7	1.35
14,724.0	89.76	342.81	7,312.2	7,044.7	-2,694.9	7,530.7	0.56
14,813.0	90.13	343.45	7,312.3	7,129.9	-2,720.7	7,619.7	0.83
14,903.0	89.70	344.13	7,312.4	7,216.3	-2,745.8	7,709.6	0.89
14,993.0	89.93	344.50	7,312.7	7,302.9	-2,770.2	7,799.6	0.48
15,082.0	89.97	343.76	7,312.8	7,388.5	-2,794.5	7,888.5	0.83
15,172.0	89.33	343.58	7,313.3	7,474.9	-2,819.8	7,978.5	0.74
15,262.0	89.70	344.55	7,314.1	7,561.4	-2,844.5	8,068.5	1.15
15,351.0	89.53	343.29	7,314.7	7,647.0	-2,869.2	8,158.5	1.43

RECEIVED
Office of Oil and Gas
JUL 06 2015



EOW Completion Report



Company:	Antero Resources	Local Co-ordinate Reference:	Well Lettie Unit 2H
Project:	Doddridge County WV	TVD Reference:	Precision 523: 1270' + 19' RKB @ 1289.0usft
Site:	Wagner Pad : Lettie/Downs/Bolte/Mason/McQuire	MD Reference:	Precision 523: 1270' + 19' RKB @ 1289.0usft
Well:	Lettie Unit 2H	North Reference:	Grid
Wellbore:	Original Wellpath	Survey Calculation Method:	Minimum Curvature
Design:	As Drilled	Database:	Oklahoma District

MD (usft)	Inc (°)	Azi (azimuth) (°)	TVD (usft)	N/S (usft)	E/W (usft)	V. Sec (usft)	DLeg (°/100usft)
15,441.0	91.08	343.56	7,314.2	7,733.2	-2,894.8	8,247.4	1.75
15,530.0	90.98	342.41	7,312.6	7,818.3	-2,920.9	8,336.4	1.30
15,620.0	90.30	340.66	7,311.6	7,903.7	-2,949.4	8,426.4	2.09
15,710.0	89.60	339.71	7,311.7	7,988.3	-2,979.9	8,516.3	1.31
15,799.0	90.57	340.73	7,311.6	8,072.1	-3,010.0	8,605.2	1.58
15,889.0	90.67	340.80	7,310.6	8,157.0	-3,039.6	8,695.2	0.14
15,978.0	89.66	338.57	7,310.3	8,240.5	-3,070.5	8,784.1	2.75
16,068.0	90.07	339.95	7,310.5	8,324.7	-3,102.4	8,874.0	1.60
16,158.0	90.37	341.57	7,310.2	8,409.6	-3,132.1	8,963.9	1.83
16,248.0	90.03	341.43	7,309.9	8,495.0	-3,160.6	9,053.9	0.41
16,337.0	90.87	341.70	7,309.2	8,579.4	-3,188.8	9,142.9	0.99
16,427.0	89.16	340.73	7,309.2	8,664.6	-3,217.7	9,232.9	2.18
16,517.0	90.07	341.65	7,309.8	8,749.8	-3,246.8	9,322.9	1.44
16,606.0	90.44	342.94	7,309.4	8,834.6	-3,273.8	9,411.9	1.51
16,696.0	89.78	341.51	7,309.2	8,920.3	-3,301.3	9,501.9	1.75
16,786.0	90.77	342.42	7,308.8	9,005.9	-3,329.2	9,591.9	1.49
16,875.0	91.71	345.62	7,306.8	9,091.4	-3,353.7	9,680.8	3.75
16,965.0	91.74	345.07	7,304.1	9,178.4	-3,376.4	9,770.6	0.61
17,055.0	90.81	342.92	7,302.1	9,264.9	-3,401.2	9,860.6	2.60
17,145.0	88.81	341.07	7,302.4	9,350.5	-3,429.0	9,950.5	3.03
17,234.0	90.17	340.73	7,303.2	9,434.6	-3,458.2	10,039.5	1.58
17,324.0	90.13	342.47	7,303.0	9,520.0	-3,486.6	10,129.5	1.93
17,414.0	89.50	344.18	7,303.3	9,606.2	-3,512.4	10,219.5	2.02
17,503.0	89.03	344.60	7,304.4	9,691.9	-3,536.3	10,308.4	0.71
17,593.0	88.79	344.10	7,306.1	9,778.5	-3,560.6	10,398.3	0.62
17,682.0	88.22	344.52	7,308.4	9,864.2	-3,584.7	10,487.3	0.80
17,739.0	87.85	344.32	7,310.4	9,919.1	-3,600.0	10,544.2	0.74
17,792.0	87.85	344.32	7,312.4	9,970.1	-3,614.3	10,597.1	0.00

Measured Depth (usft)	Vertical Depth (usft)	Local Coordinates		Comment
		+N/-S (usft)	+E/-W (usft)	
6,807.0	6,785.5	-39.1	-75.6	Sycamore
7,013.0	6,947.6	-57.8	-198.4	Middlesex
7,219.0	7,099.3	-3.9	-325.4	Burkett
7,263.0	7,129.3	16.3	-350.4	Tully
7,534.0	7,255.3	206.8	-488.8	Marcellus

Checked By: _____ Approved By: _____ Date: _____

RECEIVED
Office of Oil and Gas
JUL 06 2015