

RECEIVED

JUN 26 2015

WR-35  
Rev. 8/23/13

WV GEOLOGICAL SURVEY  
MORGANTOWN, WV

Page \_\_\_ of \_\_\_

State of West Virginia  
Department of Environmental Protection - Office of Oil and Gas  
Well Operator's Report of Well Work

API 47-017-06453 County Doddridge District New Milton  
Quad New Milton 7.5' Pad Name Cline Pad Field/Pool Name \_\_\_\_\_  
Farm name Cline, Johnnie et al Well Number Carr Unit 2H  
Operator (as registered with the OOG) Antero Resources Corporation  
Address 1615 Wynkoop Street City Denver State CO Zip 80202

As Drilled location NAD 83/UTM Attach an as-drilled plat, profile view, and deviation survey  
Top hole Northing 4,337,456m Easting 525,937m  
Landing Point of Curve Northing 4,337,388.79m Easting 526,593.74m  
Bottom Hole Northing 4,334,840m Easting 527,396m

Elevation (ft) 1,096' GL Type of Well  New  Existing Type of Report  Interim  Final  
Permit Type  Deviated  Horizontal  Horizontal 6A  Vertical Depth Type  Deep  Shallow  
Type of Operation  Convert  Deepen  Drill  Plug Back  Redrilling  Rework  Stimulate  
Well Type  Brine Disposal  CBM  Gas  Oil  Secondary Recovery  Solution Mining  Storage  Other \_\_\_\_\_  
Type of Completion  Single  Multiple Fluids Produced  Brine  Gas  NGL  Oil  Other \_\_\_\_\_  
Drilled with  Cable  Rotary

Drilling Media Surface hole  Air  Mud  Fresh Water Intermediate hole  Air  Mud  Fresh Water  Brine  
Production hole  Air  Mud  Fresh Water  Brine  
Mud Type(s) and Additive(s)  
Air- Foam & 4% KCL  
Mud- Polymer

Date permit issued 02/19/2014 Date drilling commenced 04/02/2014 Date drilling ceased 05/06/2014  
Date completion activities began 07/28/2014 Date completion activities ceased 11/14/2014  
Verbal plugging (Y/N) N/A Date permission granted N/A Granted by N/A

Please note: Operator is required to submit a plugging application within 5 days of verbal permission to plug

Freshwater depth(s) ft 59' Open mine(s) (Y/N) depths No  
Salt water depth(s) ft 637' Void(s) encountered (Y/N) depths None  
Coal depth(s) ft None Identified Cavern(s) encountered (Y/N) depths None  
Is coal being mined in area (Y/N) No

Reviewed by: \_\_\_\_\_

RECEIVED  
JUN 26 2015

WV GEOLOGICAL SURVEY  
MORGANTOWN, WV

WR-35  
Rev. 8/23/13

Page \_\_\_ of \_\_\_

API 47-017 - 06453 Farm name Cline, Johnnie et al Well number Carr Unit 2H

CASING STRINGS	Hole Size	Casing Size	Depth	New or Used	Grade wt/ft	Basket Depth(s)	Did cement circulate (Y/N) * Provide details below*
Conductor	24"	20"	40'	New	94#; H-40	N/A	Yes
Surface	17 1/2"	13 3/8"	362'	New	48#; H-40	N/A	Yes
Coal							
Intermediate 1	12 1/4"	9 5/8"	2,476'	New	36#; J-55	N/A	Yes
Intermediate 2							
Intermediate 3							
Production	8 3/4" & 8 1/2"	5 1/2"	16,562'	New	20#; P-110	N/A	Yes
Tubing		2 3/8"	7,547'		5.95#; N-80	N/A	
Packer type and depth set	N/A						

Comment Details \_\_\_\_\_

CEMENT DATA	Class/Type of Cement	Number of Sacks	Slurry wt (ppg)	Yield (ft <sup>3</sup> /sks)	Volume (ft <sup>3</sup> )	Cement Top (MD)	WOC (hrs)
Conductor	Class A	100 sx	15.6	1.18	38	0'	8 Hrs.
Surface	Class A	435 sx	15.6	1.18	251	0'	8 Hrs.
Coal							
Intermediate 1	Class A	964 sx	15.6	1.18	775	0'	8 Hrs.
Intermediate 2							
Intermediate 3							
Production	Class H	1,066 sx (Lead); 1,459 sx (Tail)	13.5 (Lead); 15.2 (Tail)	1.44 (Lead); 1.80 (Tail)	3,342	~500' into Intermediate Casing	8 Hrs.
Tubing							

Drillers TD (ft) 16,562' MD, 7,155' TVD (BHL & Deepest Point Drilled) Loggers TD (ft) 16,509'

Deepest formation penetrated Marcellus Plug back to (ft) N/A

Plug back procedure N/A

Kick off depth (ft) 7,039'

\*\*This is a subsequent well. Antero only runs wireline logs on one well on a multi-well pad (Nickers Unit 3H, API #47-017-06333). Please reference the wireline logs submitted with Form WR-35 for the Nickers Unit 3H. A Cement Bond Log has been included with this submittal.

Check all wireline logs run \*\*  caliper  density  deviated/directional  induction  neutron  resistivity  gamma ray  temperature  sonic

Well cored  Yes  No Conventional  Sidewall Were cuttings collected  Yes  No

DESCRIBE THE CENTRALIZER PLACEMENT USED FOR EACH CASING STRING \_\_\_\_\_

Conductor- 0  
 Surface- 1 above guide shoe, 1 above insert float, 1 every 4th joint to surface  
 Intermediate- 1 above float joint, 1 above float collar, 1 every 4th joint to surface  
 Production- 1 above float joint, 1 below float collar, 1 every 3rd joint to top of cement

WAS WELL COMPLETED AS SHOT HOLE  Yes  No DETAILS \_\_\_\_\_

WAS WELL COMPLETED OPEN HOLE?  Yes  No DETAILS \_\_\_\_\_

WERE TRACERS USED  Yes  No TYPE OF TRACER(S) USED RA; Chemical



JUN 26 2015

WR-35 WV GEOLOGICAL SURVEY  
Rev. 8/23/13 MORGANTOWN, WV

Page \_\_\_ of \_\_\_

API 47- 017 - 06453 Farm name Cline, Johnnie et al Well number Carr Unit 2H

PRODUCING FORMATION(S)	DEPTHS	
Marcellus	7,031' (top) TVD	7,613' (top) MD

Please insert additional pages as applicable.

GAS TEST  Build up  Drawdown  Open Flow OIL TEST  Flow  Pump

SHUT-IN PRESSURE Surface 3950 psi Bottom Hole \_\_\_\_\_ psi DURATION OF TEST \_\_\_\_\_ hrs

OPEN FLOW Gas 5,854 mcfpd Oil 5 bpd NGL \_\_\_\_\_ bpd Water 329 bpd GAS MEASURED BY  Estimated  Orifice  Pilot

LITHOLOGY/ FORMATION	TOP DEPTH IN FT NAME TVD	BOTTOM DEPTH IN FT TVD	TOP DEPTH IN FT MD	BOTTOM DEPTH IN FT MD	DESCRIBE ROCK TYPE AND RECORD QUANTITY AND TYPE OF FLUID (FRESHWATER, BRINE, OIL, GAS, H <sub>2</sub> S, ETC)
	0		0		
<b>* PLEASE SEE ATTACHED EXHIBIT 3</b>					

Please insert additional pages as applicable.

Drilling Contractor Patterson - UTI Drilling Company LLC  
Address 207 Carlton Drive City Eighty Four State PA Zip 15330

Logging Company Rush Wellsite Services  
Address 600 Alpha Drive City Canonsburg State PA Zip 15317

Cementing Company Allied Oil & Gas Services, LLC  
Address 1036 East Main Street City Bridgeport State WV Zip 26330

Stimulating Company US Well Services  
Address 533 Industrial Park Drive City Jane Lew State WV Zip 26378

Please insert additional pages as applicable.

Completed by Megan Darling Telephone 303-357-7230  
Signature *Megan C. Darling* Title Permitting Agent Date 06/26/2015

**RECEIVED**  
 JUN 26 2015  
 WV GEOLOGICAL SURVEY  
 MORGANTOWN, WV

API 47-017-06453 Farm Name Cline, Jonnie et al Well Number Carr Unit 2H

**EXHIBIT 1**

Stage No.	Perforation Date	Perforated from MD ft.	Perforated to MD ft.	Number of Perforations	Formations
1	28-Jul-14	16,303	16,415	60	Marcellus
2	9-Oct-14	16,102	16,271	60	Marcellus
3	10-Oct-14	15,901	16,070	60	Marcellus
4	10-Oct-14	15,700	15,869	60	Marcellus
5	10-Oct-14	15,499	15,668	60	Marcellus
6	11-Oct-14	15,298	15,467	60	Marcellus
7	11-Oct-14	15,097	15,266	60	Marcellus
8	11-Oct-14	14,896	15,065	60	Marcellus
9	12-Oct-14	14,695	14,864	60	Marcellus
10	12-Oct-14	14,494	14,663	60	Marcellus
11	12-Oct-14	14,293	14,462	60	Marcellus
12	13-Oct-14	14,092	14,261	60	Marcellus
13	13-Oct-14	13,890	14,060	60	Marcellus
14	13-Oct-14	13,689	13,859	60	Marcellus
15	13-Oct-14	13,488	13,658	60	Marcellus
16	14-Oct-14	13,287	13,457	60	Marcellus
17	14-Oct-14	13,086	13,256	60	Marcellus
18	14-Oct-14	12,885	13,055	60	Marcellus
19	15-Oct-14	12,684	12,854	60	Marcellus
20	16-Oct-14	12,483	12,653	60	Marcellus
21	16-Oct-14	12,282	12,452	60	Marcellus
22	16-Oct-14	12,081	12,251	60	Marcellus
23	16-Oct-14	11,880	12,050	60	Marcellus
24	17-Oct-14	11,679	11,849	60	Marcellus
25	17-Oct-14	11,478	11,648	60	Marcellus
26	17-Oct-14	11,277	11,446	60	Marcellus
27	18-Oct-14	11,076	11,245	60	Marcellus
28	18-Oct-14	10,875	11,044	60	Marcellus
29	18-Oct-14	10,674	10,843	60	Marcellus
30	18-Oct-14	10,473	10,642	60	Marcellus
31	19-Oct-14	10,272	10,441	60	Marcellus
32	19-Oct-14	10,071	10,240	60	Marcellus
33	19-Oct-14	9,870	10,039	60	Marcellus
34	19-Oct-14	9,669	9,838	60	Marcellus
35	20-Oct-14	9,468	9,637	60	Marcellus
36	20-Oct-14	9,267	9,436	60	Marcellus
37	20-Oct-14	9,065	9,235	60	Marcellus
38	21-Oct-14	8,864	9,034	60	Marcellus
39	21-Oct-14	8,663	8,833	60	Marcellus
40	21-Oct-14	8,462	8,632	60	Marcellus
41	21-Oct-14	8,261	8,431	60	Marcellus
42	22-Oct-14	8,060	8,230	60	Marcellus
43	22-Oct-14	7,859	8,029	60	Marcellus
44	22-Oct-14	7,658	7,828	60	Marcellus

RECEIVED

JUN 26 2015

WV GEOLOGICAL SURVEY  
MORGANTOWN, WV

API 47-017-06453 Farm Name Cline, Johnnie et al Well Number Carr Unit 2H

## EXHIBIT 2

Stage No.	Stimulations Date	Avg Pump Rate	Avg Treatment Pressure (PSI)	Max Breakdown Pressure (PSI)	ISIP (PSI)	Amount of Proppant (lbs)	Amount of Water (bbls)	Amount of Nitrogen/ other (units)
1	9-Oct-14	63.0	7,835	7,281	4,612	145,000	6,925	N/A
2	9-Oct-14	60.0	7,374	6,734	4,874	150,400	6,756	N/A
3	10-Oct-14	61.0	7,442	6,341	5,295	172,840	6,989	N/A
4	10-Oct-14	62.0	7,154	6,083	4,563	208,270	6,332	N/A
5	10-Oct-14	62.3	7,305	6,473	5,237	227,870	6,606	N/A
6	11-Oct-14	60.0	7,337	6,759	4,563	130,840	6,958	N/A
7	11-Oct-14	57.0	7,454	6,337	4,249	115,260	6,720	N/A
8	11-Oct-14	63.0	7,240	5,922	4,832	234,600	6,630	N/A
9	12-Oct-14	65.0	7,176	5,658	5,418	235,700	6,598	N/A
10	12-Oct-14	60.0	7,098	5,953	4,796	214,680	6,576	N/A
11	12-Oct-14	62.0	7,194	5,922	5,236	235,300	6,562	N/A
12	13-Oct-14	63.0	7,195	5,940	4,925	234,700	6,540	N/A
13	13-Oct-14	63.0	7,115	5,842	4,536	223,050	6,454	N/A
14	13-Oct-14	65.5	6,824	6,466	5,398	232,985	6,509	N/A
15	14-Oct-14	66.3	6,961	5,753	5,431	234,075	6,469	N/A
16	14-Oct-14	65.0	6,924	6,067	4,866	236,070	6,443	N/A
17	14-Oct-14	62.0	6,637	5,718	4,334	232,360	6,441	N/A
18	14-Oct-14	63.2	6,925	5,783	5,246	157,305	6,958	N/A
19	15-Oct-14	65.6	6,915	5,654	5,175	231,730	6,385	N/A
20	16-Oct-14	64.0	6,825	6,012	5,139	230,430	6,363	N/A
21	16-Oct-14	64.0	6,796	5,969	5,361	230,820	6,345	N/A
22	16-Oct-14	65.2	6,837	6,140	5,232	219,395	6,392	N/A
23	16-Oct-14	64.3	6,599	6,187	5,268	217,675	6,287	N/A
24	17-Oct-14	63.0	6,502	6,001	4,478	220,220	6,156	N/A
25	17-Oct-14	64.8	6,515	5,711	5,697	236,620	6,288	N/A
26	17-Oct-14	65.2	6,621	6,076	5,111	236,465	6,233	N/A
27	18-Oct-14	63.0	6,783	5,987	5,064	213,060	6,524	N/A
28	18-Oct-14	64.0	6,831	6,055	4,599	228,250	6,182	N/A
29	18-Oct-14	64.8	6,991	6,416	5,397	234,375	6,157	N/A
30	18-Oct-14	64.3	7,142	5,847	5,711	205,775	6,429	N/A
31	19-Oct-14	60.0	6,998	6,037	4,975	225,250	6,075	N/A
32	19-Oct-14	64.0	6,872	5,854	4,520	221,000	6,069	N/A
33	19-Oct-14	65.2	6,581	5,708	5,500	234,890	6,076	N/A
34	19-Oct-14	64.6	6,531	5,604	5,279	235,160	6,053	N/A
35	20-Oct-14	64.0	6,557	5,504	4,885	234,300	6,029	N/A
36	20-Oct-14	65.3	6,436	5,636	5,744	236,075	6,004	N/A
37	20-Oct-14	65.2	6,498	5,679	5,293	235,535	5,979	N/A
38	21-Oct-14	65.1	6,499	5,815	5,611	234,900	5,957	N/A
39	21-Oct-14	63.0	6,305	5,533	4,495	234,550	5,990	N/A
40	21-Oct-14	65.3	6,448	5,686	5,332	237,775	5,907	N/A
41	21-Oct-14	65.2	6,370	5,701	5,668	237,600	5,956	N/A
42	22-Oct-14	65.5	6,243	5,629	5,661	236,580	5,875	N/A
43	22-Oct-14	64.0	5,811	6,037	4,681	227,650	6,252	N/A
44	22-Oct-14	63.0	6,181	5,897	4,413	234,500	5,927	N/A
	AVG=	63.5	6,838	5,987	5,061	9,591,885	279,356	TOTAL

RECEIVED

JUN 26 2015

WV GEOLOGICAL SURVEY  
MORGANTOWN, WV

API 47-017-06453 Farm Name Cline, Johnnie et al Well Number Carr Unit 2H				
EXHIBIT 3				
LITHOLOGY/ FORMATION	TOP DEPTH (TVD) From Surface	BOTTOM DEPTH (TVD) From Surface	TOP DEPTH (MD) From Surface	BOTTOM DEPTH (MD) From Surface
Fresh Water	59'	N/A	59'	N/A
Sandstone	0	96	0	96
Shale/ Sandstone/ Trace Coal	96	376	96	376
Sandstone	376	456	376	456
Shale	456	596	456	596
Sandstone	596	676	596	676
Siltstone/ Shale	676	816	676	816
Sandstone	816	856	816	856
Shale	856	916	856	916
Sandstone/ Shale	916	1,016	916	1,016
Shale/ Limestone	1,016	1,056	1,016	1,056
Sandstone/Shale	1,056	1,136	1,056	1,136
Shale/ Siltstone	1,136	1,256	1,136	1,256
Siltstone	1,256	1,356	1,256	1,356
Sandstone	1,356	1,396	1,356	1,396
Shale/ Siltstone	1,396	1,456	1,396	1,456
Shale/ Limestone	1,456	1,516	1,456	1,516
Siltstone/ Sandstone	1,516	1,816	1,516	1,816
Siltstone/ Trace Coal	1,816	1,836	1,816	1,836
Sandstone	1,836	1,916	1,836	1,916
Shale	1,916	1,956	1,916	1,956
Siltstone/ Sandstone	1,956	2,141	1,956	2,145
Big Lime	2,141	2,229	2,145	2,234
Big Injun	2,229	2,438	2,234	2,444
Gantz Sand	2,438	2,529	2,444	2,636
Fifty Foot Sandstone	2,529	2,934	2,636	2,945
Gordon	2,934	3,287	2,945	3,310
Fifth Sandstone	3,287	3,329	3,310	3,355
Bayard	3,329	3,526	3,355	3,569
Warren	3,526	3,821	3,569	3,895
Speechley	3,821	3,999	3,895	4,093
Baltown	3,999	4,666	4,093	4,828
Bradford	4,666	5,123	4,828	5,334
Benson	5,123	5,382	5,334	5,622
Alexander	5,382	5,596	5,622	5,859
Elk	5,596	6,129	5,859	6,445
Rhinestreet	6,129	6,611	6,445	6,977
Sycamore	6,611	6,768	6,977	7,157
Middlesex	6,768	6,906	7,157	7,344
Burkett	6,906	6,943	7,344	7,402
Tully	6,943	7,031	7,402	7,613
Marcellus	7,031	NA	7,613	NA

RECEIVED  
JUN 26 2015

WV GEOLOGICAL SURVEY  
MORGANTOWN, WV

# Hydraulic Fracturing Fluid Product Component Information Disclosure

Job Start Date:	10/9/2014
Job End Date:	10/22/2014
State:	West Virginia
County:	Doddridge
API Number:	47-017-06453-00-00
Operator Name:	Antero Resources Corporation
Well Name and Number:	Carr Unit 2H
Longitude:	-80.69968100
Latitude:	39.18595800
Datum:	NAD83
Federal/Tribal Well:	NO
True Vertical Depth:	7,155
Total Base Water Volume (gal):	11,740,050
Total Base Non Water Volume:	503,658



## Hydraulic Fracturing Fluid Composition:

Trade Name	Supplier	Purpose	Ingredients	Chemical Abstract Service Number (CAS #)	Maximum Ingredient Concentration in Additive (% by mass)**	Maximum Ingredient Concentration in HF Fluid (% by mass)**	Comments
Water	Antero Resources	Base Fluid	Water	7732-18-5	100.00000	90.66109	
Sand	J.S. Well Services, LLC	Proppant	Crystalline Silica, quartz	14808-60-7	100.00000	8.87655	
LGC-15	J.S. Well Services, LLC	Gelling Agents	Guar Gum	9000-30-0	50.00000	0.10262	
			Petroleum Distillates	64742-47-8	60.00000	0.09719	
			Suspending agent (solid)	14808-60-7	3.00000	0.01569	
			Surfactant	68439-51-0	3.00000	0.00616	
WFRA-405	J.S. Well Services, LLC	Friction Reducer	Water	7732-18-5	40.00000	0.03686	
			Anionic Polyacrylamide	Proprietary		0.03686	
			Petroleum Distillates	64742-47-8	22.00000	0.02968	
			Crystalline Salt	12125-02-9	5.00000	0.00461	
			Ethoxylated alcohol blend	Proprietary	5.00000	0.00461	
HCL Acid (12.6%-18.0%)	J.S. Well Services, LLC	Bulk Acid	Water	7732-18-5	87.50000	0.08607	



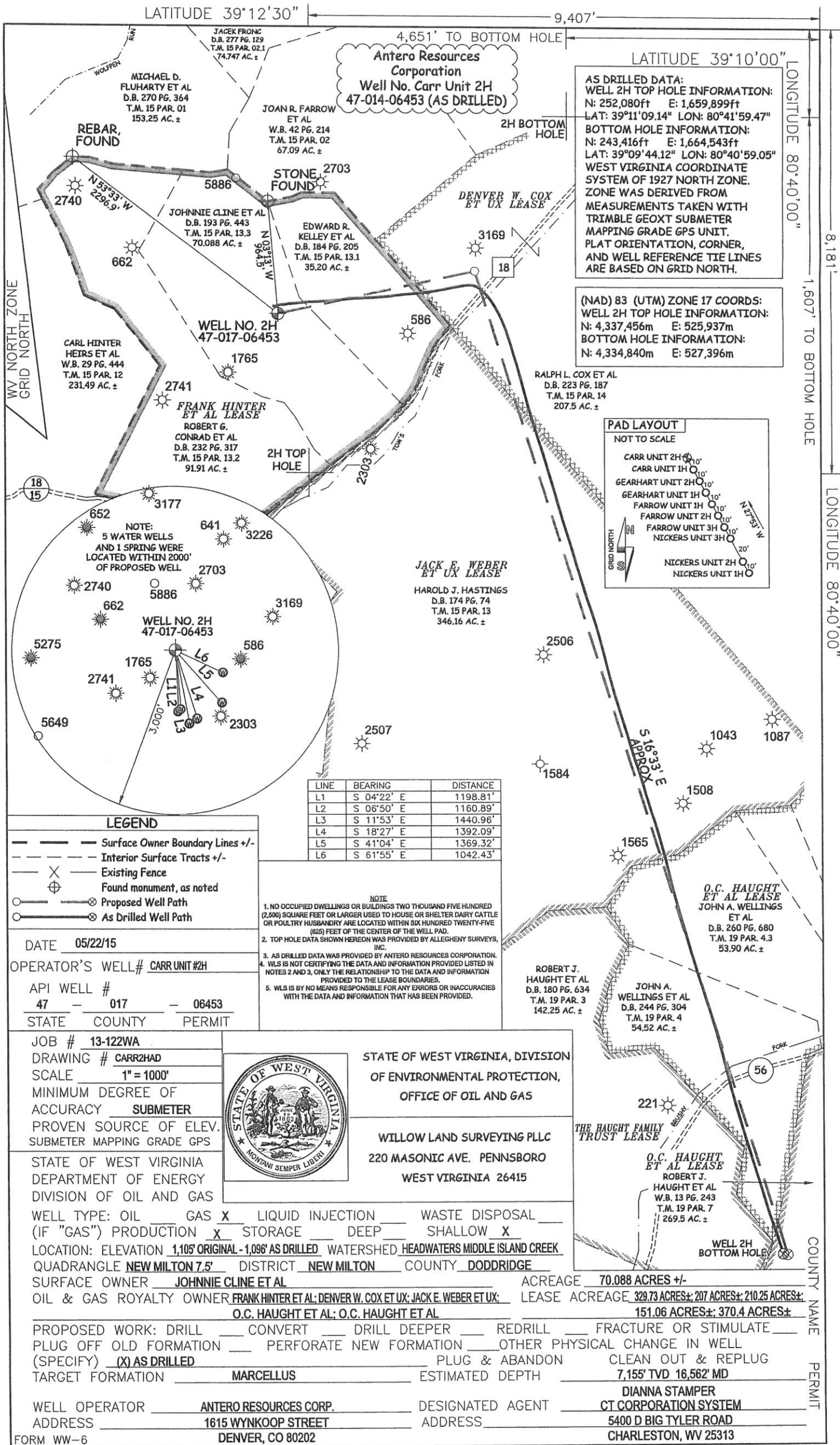
RECEIVED  
 JUN 26 2015  
 WV GEOLOGICAL SURVEY  
 MORGANTOWN, WV

SI-1000	U.S. Well Services, LLC	Scale Inhibitor	Hydrogen Chloride	7647-01-1	18.00000	0.02056
			Anionic Copolymer	Proprietary		0.00434
			Ethylene Glycol	107-21-1	20.00000	0.00392
			Water	7732-18-5	30.00000	0.00327
K-BAC 1020	U.S. Well Services, LLC	Anti-Bacterial Agent				
			2,2-dibromo-3-nitropropionamide	10222-01-2	20.00000	0.00436
			Deionized Water	7732-18-5	28.00000	0.00249
AP One	U.S. Well Services, LLC	Gel Breakers				
			Ammonium Persulfate	7727-54-0	100.00000	0.00272
AI-301	U.S. Well Services	Acid Corrosion Inhibitors				
			Diethylene Glycol	111-46-6	30.00000	0.00013
			Methanamine	100-97-0	20.00000	0.00010
			Hydrogen Chloride	7647-01-0	10.00000	0.00005
			Polyethylene polyamine	68603-67-8	10.00000	0.00004
			Coco amine	61791-14-8	5.00000	0.00002

Ingredients shown above are subject to 29 CFR 1910.1200(i) and appear on Material Safety Data Sheets (MSDS). Ingredients shown below are Non-MSDS.

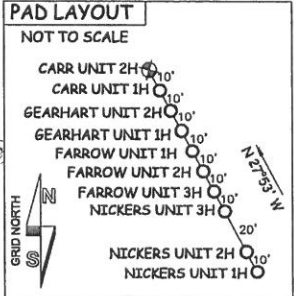
\* Total Water Volume sources may include fresh water, produced water, and/or recycled water  
 \*\* Information is based on the maximum potential for concentration and thus the total may be over 100%

Note: For Field Development Products (products that begin with FDP), MSDS level only information has been provided. Ingredient information for chemicals subject to 29 CFR 1910.1200(i) and Appendix D are obtained from suppliers Material Safety Data Sheets (MSDS)



**AS DRILLED DATA:**  
**WELL 2H TOP HOLE INFORMATION:**  
 N: 252,080ft E: 1,659,899ft  
 LAT: 39°11'09.14" LON: 80°41'59.47"  
**BOTTOM HOLE INFORMATION:**  
 N: 243,416ft E: 1,664,543ft  
 LAT: 39°09'44.12" LON: 80°40'59.05"  
 WEST VIRGINIA COORDINATE SYSTEM OF 1927 NORTH ZONE. ZONE WAS DERIVED FROM MEASUREMENTS TAKEN WITH TRIMBLE GEOXT SUBMETER MAPPING GRADE GPS UNIT. PLAT ORIENTATION, CORNER, AND WELL REFERENCE TIE LINES ARE BASED ON GRID NORTH.

**(NAD) 83 (UTM) ZONE 17 COORDS:**  
**WELL 2H TOP HOLE INFORMATION:**  
 N: 4,337,456m E: 525,937m  
**BOTTOM HOLE INFORMATION:**  
 N: 4,334,840m E: 527,396m



LINE	BEARING	DISTANCE
L1	S 04°22' E	1198.81'
L2	S 06°50' E	1160.89'
L3	S 11°53' E	1440.96'
L4	S 18°27' E	1392.09'
L5	S 41°04' E	1369.32'
L6	S 61°55' E	1042.43'

**NOTE**

- NO OCCUPIED DWELLINGS OR BUILDINGS TWO THOUSAND FIVE HUNDRED (2,500) SQUARE FEET OR LARGER USED TO HOUSE OR SHELTER DAIRY CATTLE OR POULTRY HUSBANDRY ARE LOCATED WITHIN SIX HUNDRED TWENTY-FIVE (625) FEET OF THE CENTER OF THE WELL PAD.
- TOP HOLE DATA SHOWN HEREON WAS PROVIDED BY ALLEGHENY SURVEYS, INC.
- AS DRILLED DATA WAS PROVIDED BY ANTERO RESOURCES CORPORATION.
- WLS IS NOT CERTIFYING THE DATA AND INFORMATION PROVIDED LISTED IN NOTES 2 AND 3, ONLY THE RELATIONSHIP TO THE DATA AND INFORMATION PROVIDED TO THE LEASE BOUNDARIES.
- WLS IS BY NO MEANS RESPONSIBLE FOR ANY ERRORS OR INACCURACIES WITH THE DATA AND INFORMATION THAT HAS BEEN PROVIDED.

**LEGEND**

- Surface Owner Boundary Lines +/-
- - - Interior Surface Tracts +/-
- X Existing Fence
- ⊕ Found monument, as noted
- Proposed Well Path
- ⊗ As Drilled Well Path

DATE 05/22/15

OPERATOR'S WELL# CARR UNIT #2H

API WELL #  
47 - 017 - 06453

STATE COUNTY PERMIT

JOB # 13-122WA

DRAWING # CARR2HAD

SCALE 1" = 1000'

MINIMUM DEGREE OF ACCURACY SUBMETER

PROVEN SOURCE OF ELEV. SUBMETER MAPPING GRADE GPS



STATE OF WEST VIRGINIA, DIVISION OF ENVIRONMENTAL PROTECTION, OFFICE OF OIL AND GAS

WILLOW LAND SURVEYING PLLC  
 220 MASONIC AVE. PENNSBORO  
 WEST VIRGINIA 26415

STATE OF WEST VIRGINIA DEPARTMENT OF ENERGY DIVISION OF OIL AND GAS

WELL TYPE: OIL  GAS  LIQUID INJECTION  WASTE DISPOSAL   
 (IF "GAS") PRODUCTION  STORAGE  DEEP  SHALLOW

LOCATION: ELEVATION 1,105' ORIGINAL - 1,096' AS DRILLED WATERSHED HEADWATERS MIDDLE ISLAND CREEK  
 QUADRANGLE NEW MILTON 7.5' DISTRICT NEW MILTON COUNTY DODDRIDGE

SURFACE OWNER JOHNNIE CLINE ET AL ACREAGE 70.088 ACRES +/-

OIL & GAS ROYALTY OWNER FRANK HINTER ET AL; DENVER W. COX ET UX; JACK E. WEBER ET UX; LEASE ACREAGE 329.73 ACRES +/-; 207 ACRES +/-; 210.25 ACRES +/-

O.C. HAUGHT ET AL; O.C. HAUGHT ET AL 151.06 ACRES +/-; 370.4 ACRES +/-

PROPOSED WORK: DRILL  CONVERT  DRILL DEEPER  REDRILL  FRACTURE OR STIMULATE   
 PLUG OFF OLD FORMATION  PERFORATE NEW FORMATION  OTHER PHYSICAL CHANGE IN WELL (SPECIFY) (X) AS DRILLED PLUG & ABANDON  CLEAN OUT & REPLUG

TARGET FORMATION MARCELLUS ESTIMATED DEPTH 7,155' TVD 16,562' MD

WELL OPERATOR ANTERO RESOURCES CORP. DESIGNATED AGENT DIANNA STAMPER  
 ADDRESS 1815 WYNKOOP STREET ADDRESS 5400 D BIG TYLER ROAD  
DENVER, CO 80202 CHARLESTON, WV 25313

FORM WW-6

6-6-307 (New Milton S)