



Nestor Unit 1H
 Dodridge County WV
 Northing: 14238393.78
 Easting: 1745440.54
 As Drilled



Genis Lightfoot
 11:24, November 21 2014
 Scientific Drilling
 421 South Eagle Lane
 Oklahoma City, OK 73128

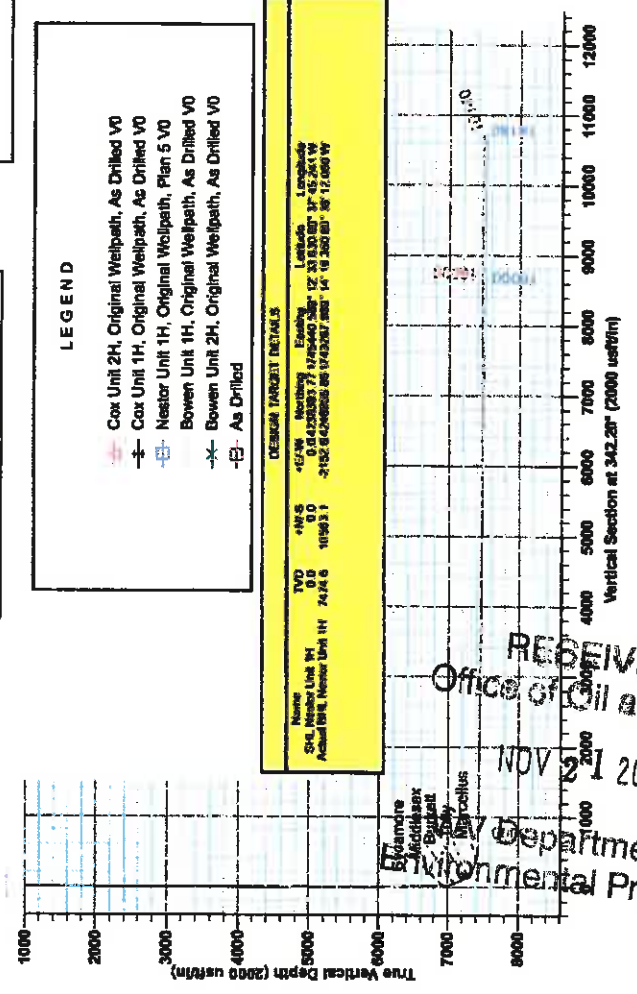
WELL DETAILS
 Nestor Unit 1H
 Ground Level: 1407.0
 Northing: 14238393.78
 Easting: 1745440.54
 Latitude: 38° 12' 33.830 N
 Longitude: 80° 37' 45.241 W

SITE DETAILS: Trent Pct Dodridge Co, W Va
 Site Center: Cox Unit 2H
 Site Centre Northing: 14238330.29
 Easting: 1745410.01
 Positional Uncertainty: 0.0
 Convergence: 0.23
 Local North: Grid

PROJECT DETAILS: Dodridge County WV
 Geocentric System: Universal Transverse Mercator (US Survey Feet)
 Datum: NAD 1983 (NAD83 CONUS)
 Ellipsoid: Clarke 1866
 Zone: Zone 17N (84 W to 78 W)
 System Datum: Mean Sea Level

Adjustments to Grid North
 True North: 0.23°
 Magnetic North: -8.70°
 Magnetic Field
 Strength: 52582.0eAT
 Dip Angle: 68.75°
 Date: 3/20/2014
 Model: IGRF2010

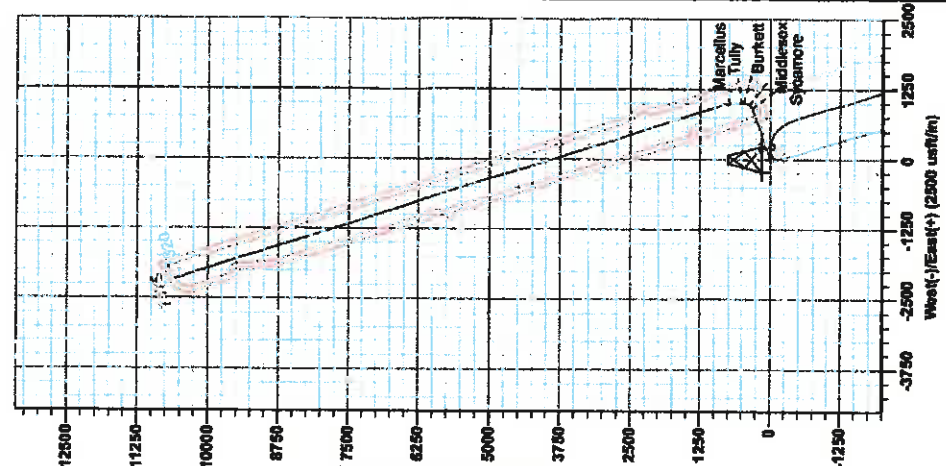
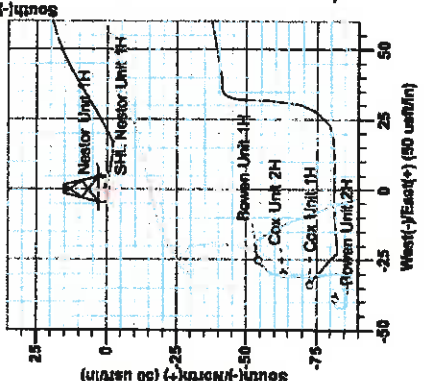
To convert Magnetic North to Grid, Subtract 8.70°
 To convert True North to Grid, Subtract 0.23°



LEGEND

- Cox Unit 2H, Original Wellpath, As Drilled V0
- Cox Unit 1H, Original Wellpath, As Drilled V0
- Nestor Unit 1H, Original Wellpath, Plan 5 V0
- Bowen Unit 1H, Original Wellpath, As Drilled V0
- Bowen Unit 2H, Original Wellpath, As Drilled V0
- As Drilled

Name	TVD	NR/S	4E/W	Northing	Easting	Latitude	Longitude
SCH Nestor Unit 1H	0.0	0.0	0.0	14238393.78	1745440.54	38° 12' 33.830 N	80° 37' 45.241 W
Actual BHA Nestor Unit 1H	7474.6	10159.21	-2152.6	6268855.86	11432007.280	34° 18' 2.800 S	86° 12' 0.000 W



RECEIVED
 Office of Oil and Gas
 NOV 21 2016
 Department of Environmental Protection

PSEZ Nestor 1H 1487.01 - 19.03 @ 1425.0usft
 Gr: 1407.0



Antero Resources

Doddridge County WV

Trent Pad: Bowen/Cox/Life/Baker/Nestor

Nestor Unit 1H

Original Wellpath

Design: As Drilled

EOW Completion Report

21 November, 2014



RECEIVED
Office of Oil and Gas
Scientific Drilling
NOV 21 2014

**WV Department of
Environmental Protection**



Company: Antero Resources	Local Co-ordinate Reference: Well Nestor Unit 1H
Project: Doddridge County WV	TVD Reference: P525: Nestor 1H 1407 GL + 19 KB @ 1426.0usft
Site: Trent Pad: Bowen/Cox/Life/Baker/Nestor	MD Reference: P525: Nestor 1H 1407 GL + 19 KB @ 1426.0usft
Well: Nestor Unit 1H	North Reference: Grid
Wellbore: Original Wellpath	Survey Calculation Method: Minimum Curvature
Design: As Drilled	Database: Oklahoma District

Project	Doddridge County WV, McClellan District		
Map System:	Universal Transverse Mercator (US Survey Feet)	System Datum:	Mean Sea Level
Geo Datum:	NAD 1927 (NADCON CONUS)		
Map Zone:	Zone 17N (84 W to 78 W)		

Site Trent Pad: Bowen/Cox/Life/Baker/Nestor

Site Position:		Northing: 14,238,330.29 usft	Latitude: 39° 12' 33.204 N
From: Map		Easting: 1,745,410.61 usft	Longitude: 80° 37' 45.625 W
Position Uncertainty:	0.0 usft	Slot Radius: 13-3/16"	Grid Convergence: 0.23 °

Well Nestor Unit 1H, Marcellus

Well Position	+N/-S 0.0 usft	Northing: 14,238,393.78 usft	Latitude: 39° 12' 33.630 N
	+E/-W 0.0 usft	Easting: 1,745,440.54 usft	Longitude: 80° 37' 45.241 W
Position Uncertainty	2.0 usft	Wellhead Elevation: 1,426.0 usft	Ground Level: 1,407.0 usft

Wellbore Original Wellpath

Magnetics	Model Name	Sample Date	Declination (°)	Dip Angle (°)	Field Strength (nT)
	IGRF2010	3/20/2014	-8.55	66.75	52,283

Design As Drilled

Audit Notes:

Version: 1.0	Phase: ACTUAL	Tie On Depth: 0.0
---------------------	----------------------	--------------------------

Vertical Section:	Depth From (TVD) (usft)	+N/-S (usft)	+E/-W (usft)	Direction (°)
	0.0	0.0	0.0	342.20

Survey Program Date 11/10/2014

From (usft)	To (usft)	Survey (Wellbore)	Tool Name	Description
106.0	7,226.0	Survey #6 Final Gyro (Original Wellpath)	SDI Standard Keeper	Scientific Drilling Intl. Standard Wireline Keeper
7,271.0	18,140.0	Survey #7 SDI MWD (Original Wellpath)	SDI MWD	Scientific Drilling Intl. MWD - Standard ver 1.0.1

Survey

MD (usft)	Inc (°)	Azi (azimuth) (°)	TVD (usft)	N/S (usft)	E/W (usft)	V. Sec (usft)	DLeg (°/100usft)
0.0	0.00	0.00	0.0	0.0	0.0	0.0	0.00
106.0	0.03	98.50	106.0	0.0	0.0	0.0	0.03
206.0	0.06	98.50	206.0	0.0	0.1	0.0	0.03
306.0	0.09	98.50	306.0	0.0	0.2	-0.1	0.03
406.0	0.12	98.50	406.0	-0.1	0.4	-0.2	0.03
506.0	0.14	98.50	506.0	-0.1	0.6	0.3	0.02
606.0	0.17	98.50	606.0	-0.1	0.9	0.4	0.03
706.0	0.20	98.50	706.0	-0.2	1.2	0.5	0.03
806.0	0.23	98.50	806.0	-0.2	1.6	-0.7	0.03
906.0	0.26	98.50	906.0	-0.3	2.0	0.9	0.03
1,006.0	0.29	98.50	1,006.0	-0.4	2.5	-1.1	0.03

RECEIVED
Office of Oil and Gas
NOV 21 2016



Company: Antero Resources
 Project: Doddridge County WV
 Site: Trent Pad: Bowen/Cox/Life/Baker/Nestor
 Well: Nestor Unit 1H
 Wellbore: Original Wellpath
 Design: As Drilled

Local Co-ordinate Reference: Well Nestor Unit 1H
 TVD Reference: P525: Nestor 1H 1407 GL + 19 KB @ 1426.0usft
 MD Reference: P525: Nestor 1H 1407 GL + 19 KB @ 1426.0usft
 North Reference: Grid
 Survey Calculation Method: Minimum Curvature
 Database: Oklahoma District

Survey

MD (usft)	Inc (")	Azi (azimuth) (")	TVD (usft)	N/S (usft)	EW (usft)	V. Sec (usft)	DLeg ("/100usft)
1,106.0	0.32	98.50	1,106.0	-0.5	3.0	-1.4	0.03
1,206.0	0.35	98.50	1,206.0	-0.5	3.6	-1.6	0.03
1,306.0	0.37	98.50	1,306.0	-0.6	4.2	-1.9	0.02
1,406.0	0.40	98.50	1,406.0	-0.7	4.9	-2.2	0.03
1,506.0	0.43	98.50	1,506.0	-0.8	5.6	-2.5	0.03
1,606.0	0.46	98.50	1,606.0	-1.0	6.4	-2.9	0.03
1,706.0	0.49	98.50	1,706.0	-1.1	7.2	-3.2	0.03
1,806.0	0.52	98.50	1,806.0	-1.2	8.1	-3.6	0.03
1,906.0	0.55	98.50	1,906.0	-1.3	9.0	-4.0	0.03
2,006.0	0.58	98.50	2,006.0	-1.5	10.0	-4.5	0.03
2,106.0	0.61	98.50	2,106.0	-1.6	11.0	-4.9	0.03
2,206.0	0.63	98.50	2,206.0	-1.8	12.1	-5.4	0.02
2,306.0	0.66	98.42	2,305.9	-2.0	13.2	-5.9	0.03
2,406.0	0.49	93.69	2,405.9	-2.1	14.2	-6.3	0.18
2,506.0	0.30	89.42	2,505.9	-2.1	14.9	-6.5	0.19
2,606.0	0.15	58.93	2,605.9	-2.0	15.2	-6.6	0.18
2,706.0	0.14	58.62	2,705.9	-1.9	15.4	-6.5	0.01
2,806.0	0.12	65.69	2,805.9	-1.8	15.6	-6.5	0.03
2,906.0	0.16	110.38	2,905.9	-1.8	15.9	-6.6	0.11
3,006.0	0.08	322.82	3,005.9	-1.8	16.0	-6.6	0.23
3,106.0	0.06	35.47	3,105.8	-1.7	16.0	-6.5	0.08
3,206.0	0.08	94.55	3,205.9	-1.7	16.1	-6.5	0.07
3,306.0	0.20	116.85	3,305.9	-1.7	16.3	-6.6	0.13
3,406.0	0.07	133.61	3,405.9	-1.9	16.5	-6.8	0.13
3,506.0	0.09	113.17	3,505.9	-1.9	16.6	-6.9	0.03
3,606.0	0.12	208.18	3,605.9	-2.1	16.6	-7.0	0.16
3,706.0	0.12	331.90	3,705.9	-2.1	16.5	-7.0	0.21
3,806.0	0.18	112.06	3,805.9	-2.0	16.6	-7.0	0.28
3,906.0	0.19	142.85	3,905.9	-2.2	16.9	-7.3	0.10
4,006.0	0.01	202.39	4,005.9	-2.4	17.0	-7.4	0.19
4,106.0	0.08	132.33	4,105.9	-2.4	17.0	-7.5	0.08
4,206.0	0.15	206.26	4,205.9	-2.6	17.0	-7.7	0.15
4,306.0	0.14	316.06	4,305.9	-2.6	16.9	-7.6	0.24
4,406.0	0.09	288.02	4,405.9	-2.5	16.7	-7.5	0.07
4,506.0	1.44	50.26	4,505.9	-1.7	17.6	-7.0	1.49
4,606.0	4.46	66.23	4,605.8	0.7	22.1	-8.1	3.10
4,706.0	7.14	57.23	4,705.3	5.6	30.9	-4.1	2.82
4,806.0	9.67	61.92	4,804.2	12.9	43.5	-1.0	2.62
4,906.0	11.31	75.44	4,802.5	19.4	60.4	-0.5	2.95
5,006.0	12.97	79.23	5,000.3	23.9	81.0	-2.0	
5,106.0	16.43	82.29	5,097.0	27.9	106.0	-5.8	3.54
5,206.0	18.41	74.16	5,192.9	33.7	133.6	-8.1	2.30
5,306.0	18.82	67.78	5,288.3	43.6	162.0	-8.0	2.92
5,406.0	22.14	68.70	5,382.0	56.5	194.3	-5.6	3.53

RECEIVED
 Office of Oil and Gas
 NOV 28 2016
 WV Department of
 Environmental Protection
 COMPASS 5000-1 5/10/10



EOW Completion Report



Company: Antero Resources
 Project: Doddridge County WV
 Site: Trent Pad: Bowen/Cox/Life/Baker/Nestor
 Well: Nestor Unit 1H
 Wellbore: Original Wellpath
 Design: As Drilled

Local Co-ordinate Reference: Well Nestor Unit 1H
 TVD Reference: P525: Nestor 1H 1407 GL + 19 KB @ 1426.0usft
 MD Reference: P525: Nestor 1H 1407 GL + 19 KB @ 1426.0usft
 North Reference: Grid
 Survey Calculation Method: Minimum Curvature
 Database: Oklahoma District

Survey

MD (usft)	Inc (°)	Azi (azimuth) (°)	TVD (usft)	N/S (usft)	E/W (usft)	V. Sec (usft)	DLeg (°/100usft)
5,506.0	25.22	70.75	5,473.6	70.3	232.0	-4.0	3.19
5,606.0	27.82	68.69	5,563.1	65.8	273.9	-2.0	2.76
5,706.0	28.49	68.72	5,651.2	103.0	317.8	0.9	0.67
5,806.0	27.44	70.91	5,739.6	119.2	361.8	2.9	1.47
5,906.0	27.41	71.88	5,828.3	133.9	405.5	3.5	0.45
6,006.0	26.79	71.98	5,917.3	148.0	448.8	3.7	0.62
6,106.0	26.73	71.56	6,006.6	162.1	491.6	4.1	0.20
6,206.0	26.45	70.24	6,096.1	176.7	533.9	5.1	0.65
6,306.0	25.97	69.14	6,185.8	192.0	575.3	7.0	0.68
6,406.4	25.48	69.02	6,276.2	207.6	616.0	9.4	0.51
6,463.0	25.45	68.40	6,327.3	216.4	638.6	10.8	0.47
6,553.0	25.03	68.63	6,408.7	230.5	674.3	13.3	0.48
6,643.0	25.58	68.09	6,490.1	244.7	710.1	15.9	0.66
6,732.0	24.95	68.68	6,570.6	258.7	745.4	18.4	0.76
6,822.0	24.80	69.15	6,652.2	272.3	780.7	20.6	0.28
6,912.0	24.99	70.25	6,733.9	285.4	816.3	22.2	0.56
7,002.0	25.69	69.61	6,815.2	298.7	852.4	23.8	0.84
7,091.0	27.33	69.27	6,894.9	312.6	889.6	25.7	1.85
7,126.0	27.00	69.13	6,926.0	318.3	904.6	26.5	0.95
Sycamore							
7,136.0	26.91	69.09	6,934.9	319.9	908.8	26.8	0.95
7,181.0	26.70	63.82	6,975.1	328.0	927.4	28.8	5.30
7,226.0	27.07	50.91	7,015.3	338.9	944.4	34.0	12.98
7,271.0	27.83	40.70	7,055.2	353.4	959.2	43.2	10.58
7,315.0	29.20	30.93	7,093.9	370.4	971.5	55.7	11.04
7,318.0	29.29	30.49	7,096.5	371.6	972.2	56.6	7.78
Middlesex							
7,360.0	30.76	24.65	7,132.9	390.2	981.9	71.4	7.78
7,405.0	33.94	16.96	7,170.9	412.7	990.4	90.2	11.54
7,450.0	37.20	11.31	7,207.5	436.1	996.7	112.4	10.28
7,495.0	40.98	5.55	7,242.5	466.1	1,000.8	137.9	11.64
7,506.0	42.19	4.68	7,250.7	473.4	1,001.5	144.6	12.20
Burkett							
7,539.0	45.86	2.29	7,274.4	496.3	1,002.8	166.0	12.20
7,547.0	46.64	1.81	7,279.9	502.1	1,003.0	171.4	10.67
Tully							
7,564.0	50.27	359.73	7,304.5	529.8	1,003.4	197.7	10.67
7,629.0	54.86	357.75	7,331.8	565.5	1,002.6	231.9	10.78
7,674.0	60.38	355.96	7,355.9	603.4	1,000.5	268.7	12.72
7,719.0	66.02	354.87	7,376.2	643.4	997.3	307.8	12.72
7,764.0	70.37	354.43	7,392.9	685.0	993.4	348.5	9.71
7,808.0	74.31	352.72	7,406.3	726.7	988.7	389.3	9.69
Marcellus							
7,853.0	78.18	350.43	7,417.0	769.9	982.3	432.7	9.92
7,898.0	82.80	347.43	7,424.4	813.4	973.7	476.8	12.19

RECEIVED
 Office of Oil and Gas
 NOV 21 2016



Company: Antero Resources
 Project: Doddridge County WV
 Site: Trent Pad: Bowen/Cox/Life/Baker/Nestor
 Well: Nestor Unit 1H
 Wellbore: Original Wellpath
 Design: As Drilled

Local Co-ordinate Reference: Well Nestor Unit 1H
 TVD Reference: P525: Nestor 1H 1407 GL + 19 KB @ 1426.0usft
 MD Reference: P525: Nestor 1H 1407 GL + 19 KB @ 1426.0usft
 North Reference: Grid
 Survey Calculation Method: Minimum Curvature
 Database: Oklahoma District

Survey

MD (usft)	Inc (°)	Azi (azimuth) (°)	TVD (usft)	N/S (usft)	E/W (usft)	V. Sec (usft)	DLeg (°/100usft)
7,943.0	85.90	344.14	7,428.8	856.8	962.7	521.5	10.02
7,965.0	87.05	343.57	7,430.2	877.9	956.6	543.4	5.83
8,054.0	89.52	342.96	7,432.8	963.1	931.0	632.4	2.86
8,144.0	89.96	343.05	7,433.2	1,049.2	904.7	722.4	0.50
8,233.0	89.87	342.61	7,433.4	1,134.2	876.5	811.4	0.50
8,323.0	90.40	342.43	7,433.2	1,220.0	851.4	901.4	0.62
8,413.0	87.93	341.99	7,434.5	1,305.7	823.9	991.3	2.79
8,502.0	87.41	341.90	7,438.1	1,390.3	796.4	1,080.3	0.59
8,592.0	89.08	341.99	7,440.8	1,475.8	768.5	1,170.2	1.86
8,682.0	89.43	341.90	7,442.0	1,561.4	740.6	1,260.2	0.40
8,772.0	89.69	341.82	7,442.7	1,646.9	712.6	1,350.2	0.30
8,861.0	89.52	342.26	7,443.3	1,731.5	685.1	1,439.2	0.53
8,951.0	89.60	342.61	7,444.0	1,817.3	658.0	1,529.2	0.40
9,041.0	90.04	342.17	7,444.3	1,903.1	630.7	1,619.2	0.89
9,130.0	88.99	341.55	7,445.0	1,987.7	603.0	1,708.2	1.37
9,220.0	88.90	341.29	7,446.7	2,073.0	574.4	1,798.2	0.31
9,310.0	89.16	341.99	7,448.2	2,158.4	546.0	1,888.2	0.83
9,400.0	89.52	342.26	7,449.3	2,244.0	518.4	1,978.1	0.50
9,489.0	89.60	341.99	7,449.9	2,328.7	491.1	2,067.1	0.32
9,579.0	89.52	341.84	7,450.8	2,414.2	463.0	2,157.1	0.40
9,669.0	89.08	341.11	7,451.7	2,499.5	434.3	2,247.1	0.77
9,758.0	89.60	341.64	7,452.8	2,583.9	405.8	2,336.1	0.83
9,848.0	89.60	341.46	7,453.4	2,669.2	377.3	2,426.1	0.20
9,938.0	88.90	342.69	7,454.6	2,754.9	349.6	2,516.1	1.57
10,027.0	89.16	342.87	7,456.1	2,839.8	323.3	2,605.1	0.36
10,117.0	89.60	343.40	7,457.1	2,926.0	297.2	2,695.1	0.77
10,206.0	90.04	344.19	7,457.3	3,011.4	272.4	2,784.0	1.02
10,296.0	88.20	342.08	7,458.7	3,097.5	246.3	2,874.0	3.11
10,386.0	88.46	341.55	7,461.3	3,183.0	218.2	2,963.9	0.66
10,475.0	89.52	342.43	7,462.9	3,267.6	190.7	3,052.9	1.55
10,565.0	89.52	342.08	7,463.7	3,353.4	163.2	3,142.9	0.39
10,655.0	89.87	342.61	7,464.1	3,439.1	135.9	3,232.9	0.71
10,745.0	89.69	341.99	7,464.5	3,524.9	108.6	3,322.9	0.72
10,834.0	89.52	341.20	7,465.1	3,609.3	80.5	3,411.9	0.81
10,924.0	90.04	341.55	7,465.4	3,694.6	51.7	3,501.9	0.70
11,014.0	90.40	341.99	7,465.1	3,780.1	23.6	3,591.9	0.63
11,108.0	90.13	342.61	7,464.7	3,869.6	-5.0	3,685.9	0.72
11,202.0	88.02	339.53	7,466.2	3,958.5	-35.5	3,779.9	3.97
11,296.0	89.69	341.73	7,468.1	4,047.2	-66.6	3,873.9	2.94
11,391.0	90.31	343.75	7,468.1	4,137.9	-94.8	3,968.9	2.22
11,484.0	90.04	343.31	7,467.8	4,227.1	-121.2	4,061.6	0.66
11,579.0	90.40	343.93	7,467.4	4,318.2	-148.0	4,156.7	0.75
11,673.0	89.25	344.54	7,467.7	4,408.7	-173.5	4,250.2	1.38
11,768.0	89.34	344.98	7,468.9	4,500.3	-198.5	4,345.6	0.47
11,862.0	89.16	344.36	7,470.1	4,591.0	-223.3	4,439.5	0.69

RECEIVED
 Office of Oil and Gas
 NOV 2 1 2016
 WV Department of Environmental Protection



EOW Completion Report



Company: Antero Resources
 Project: Doddridge County WV
 Site: Trent Pad:Bower/Cox/Life/Baker/Nestor
 Well: Nestor Unit 1H
 Wellbore: Original Wellpath
 Design: As Drilled

Local Co-ordinate Reference: Well Nestor Unit 1H
 TVD Reference: P525: Nestor 1H 1407 GL + 19 KB @ 1426.0usft
 MD Reference: P525: Nestor 1H 1407 GL + 19 KB @ 1426.0usft
 North Reference: Grid
 Survey Calculation Method: Minimum Curvature
 Database: Oklahoma District

Survey

MD (usft)	Inc (°)	Azi (azimuth) (°)	TVD (usft)	N/S (usft)	EW (usft)	V. Sec (usft)	DLeg (°/100usft)
11,957.0	90.31	343.75	7,470.5	4,682.3	-249.4	4,534.4	1.37
12,051.0	90.75	343.84	7,469.7	4,772.6	-275.7	4,628.4	0.48
12,145.0	89.69	344.45	7,469.3	4,863.0	-301.4	4,722.3	1.30
12,235.0	89.34	343.22	7,470.1	4,949.4	-326.4	4,812.3	1.42
12,324.0	88.16	342.96	7,471.2	5,034.6	-352.3	4,901.3	0.36
12,414.0	89.87	342.34	7,472.0	5,120.5	-379.1	4,991.2	1.05
12,504.0	89.69	342.34	7,472.3	5,206.2	-406.4	5,081.2	0.20
12,593.0	89.43	340.76	7,473.0	5,290.6	-434.6	5,170.2	1.80
12,683.0	89.87	341.73	7,473.6	5,375.9	-463.5	5,260.2	1.18
12,772.0	89.87	341.84	7,473.8	5,460.4	-491.5	5,349.2	0.10
12,862.0	89.96	341.02	7,473.9	5,545.6	-520.3	5,439.2	0.70
12,952.0	90.66	342.43	7,473.4	5,631.1	-548.5	5,529.2	1.75
13,041.0	89.87	341.82	7,473.0	5,715.8	-575.9	5,618.2	1.12
13,131.0	90.57	343.13	7,472.7	5,801.6	-603.0	5,708.2	1.65
13,221.0	90.40	342.43	7,471.9	5,887.6	-629.6	5,798.2	0.80
13,310.0	89.96	342.69	7,471.6	5,972.5	-656.3	5,887.2	0.57
13,400.0	90.13	342.87	7,471.6	6,058.4	-682.9	5,977.2	0.28
13,490.0	89.34	341.46	7,472.0	6,144.1	-710.5	6,067.2	1.80
13,579.0	89.25	339.71	7,473.1	6,228.0	-740.1	6,156.1	1.97
13,669.0	89.16	337.16	7,474.3	6,311.7	-773.1	6,245.9	2.83
13,759.0	91.45	338.83	7,473.8	6,395.2	-806.9	6,335.7	3.15
13,848.0	91.54	340.41	7,471.5	6,478.5	-837.8	6,424.5	1.78
13,938.0	91.54	341.82	7,469.1	6,563.7	-867.0	6,514.5	1.57
14,027.0	90.82	342.52	7,467.2	6,648.4	-894.2	6,603.5	1.05
14,117.0	90.48	343.49	7,466.1	6,734.4	-920.5	6,693.4	1.18
14,207.0	90.48	343.57	7,465.3	6,820.7	-946.0	6,783.4	0.09
14,296.0	89.87	343.13	7,465.1	6,906.0	-971.5	6,872.4	0.85
14,386.0	90.22	342.08	7,465.0	6,991.9	-998.4	6,962.4	1.23
14,475.0	91.01	341.99	7,464.0	7,076.5	-1,025.9	7,051.4	0.89
14,565.0	87.93	339.79	7,464.9	7,161.6	-1,055.3	7,141.3	4.21
14,655.0	88.99	340.50	7,467.3	7,246.2	-1,085.9	7,231.3	1.42
14,744.0	90.22	341.46	7,467.9	7,330.3	-1,114.9	7,320.2	1.75
14,834.0	90.66	342.78	7,467.2	7,416.0	-1,142.5	7,410.2	1.55
14,924.0	90.31	342.69	7,466.4	7,501.9	-1,169.2	7,500.2	0.40
15,014.0	90.40	342.61	7,465.9	7,587.8	-1,196.1	7,590.2	0.13
15,103.0	88.99	340.85	7,466.4	7,672.3	-1,224.0	7,679.2	2.53
15,193.0	89.96	341.64	7,467.2	7,757.5	-1,252.9	7,769.2	1.39
15,283.0	90.22	342.52	7,467.0	7,843.2	-1,280.6	7,859.2	1.02
15,372.0	90.31	341.82	7,466.6	7,927.9	-1,307.8	7,948.2	0.79
15,462.0	89.76	341.73	7,466.6	8,013.4	-1,336.0	8,036.2	0.09
15,551.0	89.87	342.61	7,466.9	8,098.1	-1,363.2	8,127.2	1.00
15,641.0	90.75	343.49	7,466.4	8,184.2	-1,389.5	8,217.2	1.38
15,731.0	90.48	343.05	7,465.4	8,270.4	-1,415.4	8,307.1	0.57
15,820.0	90.84	342.61	7,464.4	8,355.4	-1,441.7	8,396.1	0.64

RECEIVED
 Office of Oil and Gas

NOV 21 2016

WV Department of
 Environmental Protection
 COMPASS 5000.1 BUND 74



Company: Antero Resources
 Project: Doddridge County WV
 Site: Trent Pad: Bowen/Cox/Life/Baker/Nestor
 Well: Nestor Unit 1H
 Wellbore: Original Wellpath
 Design: As Drilled

Local Co-ordinate Reference:
 TVD Reference:
 MD Reference:
 North Reference:
 Survey Calculation Method:
 Database:

Well Nestor Unit 1H
 P525: Nestor 1H 1407 GL + 19 KB @ 1426.0usft
 P525: Nestor 1H 1407 GL + 19 KB @ 1426.0usft
 Grid
 Minimum Curvature
 Oklahoma District

Survey

MD (usft)	Inc (")	Azi (azimuth) (")	TVD (usft)	N/S (usft)	E/W (usft)	V. Sec (usft)	OLeg ("/100usft)
15,909.0	88.46	343.22	7,464.9	8,440.5	-1,467.8	8,485.1	2.76
15,999.0	88.46	343.13	7,467.3	8,526.6	-1,493.8	8,575.1	0.10
16,088.0	90.57	344.80	7,468.1	8,612.1	-1,518.4	8,664.0	3.02
16,178.0	89.78	342.52	7,467.8	8,698.5	-1,543.7	8,754.0	2.68
16,268.0	89.25	342.17	7,468.6	8,784.2	-1,571.0	8,844.0	0.71
16,358.0	89.69	342.61	7,469.4	8,870.0	-1,598.3	8,934.0	0.69
16,447.0	90.13	343.05	7,469.6	8,955.0	-1,624.5	9,023.0	0.70
16,537.0	90.04	342.78	7,469.4	9,041.1	-1,651.0	9,113.0	0.32
16,627.0	91.98	344.36	7,467.8	9,127.4	-1,676.4	9,202.9	2.78
16,717.0	89.60	343.93	7,466.6	9,213.9	-1,701.0	9,292.8	2.69
16,806.0	89.87	343.13	7,467.0	9,299.3	-1,726.2	9,381.8	0.95
16,896.0	90.92	341.55	7,466.4	9,385.0	-1,753.5	9,471.8	2.11
16,986.0	90.04	341.20	7,465.6	9,470.3	-1,782.3	9,561.8	1.05
17,075.0	90.66	341.46	7,465.1	9,554.6	-1,810.8	9,650.8	0.76
17,165.0	90.48	340.67	7,464.2	9,639.8	-1,840.0	9,740.8	0.90
17,255.0	90.75	341.99	7,463.2	9,725.0	-1,868.8	9,830.7	1.50
17,344.0	88.55	342.26	7,463.8	9,809.7	-1,896.1	9,919.7	2.49
17,434.0	88.64	341.55	7,466.0	9,895.2	-1,924.0	10,009.7	0.79
17,524.0	87.85	339.97	7,466.7	9,980.2	-1,953.7	10,099.6	1.96
17,614.0	89.25	341.29	7,471.0	10,065.0	-1,983.5	10,189.6	2.14
17,703.0	89.34	340.85	7,472.1	10,149.2	-2,012.4	10,278.5	0.50
17,793.0	89.43	341.29	7,473.1	10,234.3	-2,041.6	10,368.5	0.50
17,883.0	89.52	341.11	7,473.9	10,319.5	-2,070.6	10,458.5	0.22
17,972.0	89.87	341.46	7,474.4	10,403.8	-2,099.2	10,547.5	0.56
18,062.0	89.96	341.36	7,474.5	10,489.1	-2,127.8	10,637.5	0.13
18,082.0	89.96	341.46	7,474.5	10,508.1	-2,134.2	10,657.5	0.40
18,140.0	89.96	341.46	7,474.6	10,563.1	-2,152.8	10,715.5	0.00

Design Annotations

Measured Depth (usft)	Vertical Depth (usft)	Local Coordinates		Comment
		+N/-S (usft)	+E/-W (usft)	
7,126.0	6,926.0	318.3	804.6	Sycamore
7,318.0	7,096.5	371.6	872.2	Middlesex
7,508.0	7,250.7	473.4	1,001.5	Burkett
7,547.0	7,279.9	502.1	1,003.0	Tully
7,808.0	7,406.3	726.7	898.7	Marcellus

Checked By: _____ Approved By: _____ Date: _____

RECEIVED
 Office of Oil and Gas

NOV 21 2016

WV Department of
 Environmental Protection