



**Baker Unit 1H**  
**Dodderidge County WV**  
**Northing: 14238357.51**  
**Easting: 1745424.15**  
**As Drilled**



**Scientific Drilling**



Alignments to Grid North  
 True North: -0.23°  
 Magnetic North: -8.79°  
 Magnetic Field  
 Strength: 52262.5nT  
 Dip Angle: 86.76°  
 Date: 3/20/2014  
 Model: IGRF-2010

**WELL DETAILS Baker Unit 1H**  
 Ground Level: 1410.0  
 Easting: 1745424.15  
 Northing: 14238357.51  
 Latitude: 38° 12' 33.472" N  
 Longitude: 80° 37' 45.451" W

Precision 525: CL 1410' ± 18" X8 @ 1423.0 East  
 Gr: 1410.0

**LEGEND**

- ⊕ Cox Unit 2H, Original Wellpath, As Drilled V0
- ⊖ Cox Unit 1H, Original Wellpath, As Drilled V0
- ⊙ Neslor Unit 1H, Original Wellpath, As Drilled V0
- ⊗ Life Unit 1H, Original Wellpath, As Drilled V0
- ⊕ Bowen Unit 1H, Original Wellpath, As Drilled V0
- ⊖ Baker Unit 2H, Original Wellpath, As Drilled V0
- ⊙ Life Unit 2H, Original Wellpath, As Drilled V0
- ⊗ Bowen Unit 2H, Original Wellpath, As Drilled V0
- ⊕ Baker Unit 1H, Original Wellpath, Plan 4 Rev 1 V0
- ⊖ As Drilled

Genie Lightfoot  
 9/54, September 18 2014  
 Scientific Drilling  
 421 South Eads Ave  
 Oklahoma City, OK 73128

**SITE DETAILS:** Trent Pad: Bowen/Cox/Life/Baker/Neslor

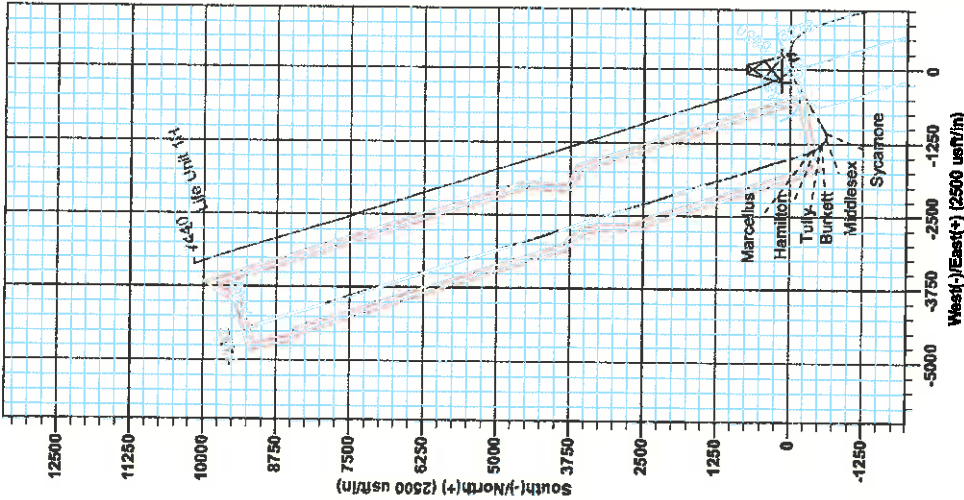
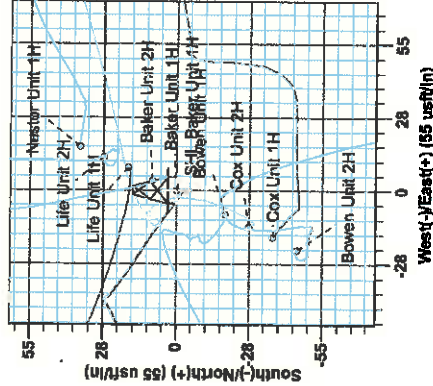
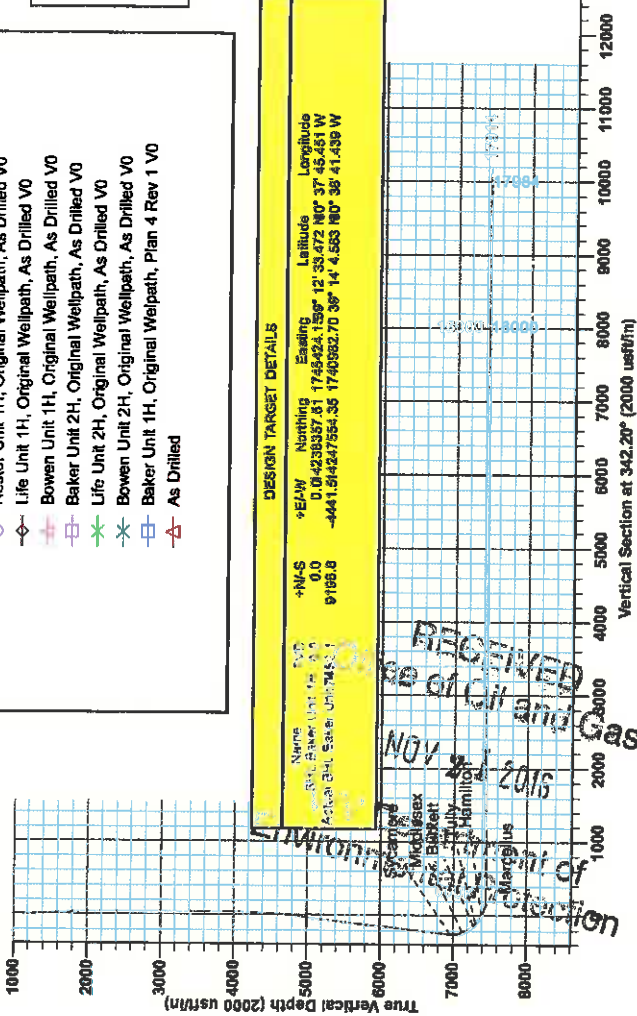
Site Center: Cox Unit 2H  
 Site Centres Northing: 14238350.29  
 Easting: 1745410.61

Positional Uncertainty: 0.0  
 Convergence: 0.23  
 Local North: Grid

**PROJECT DETAILS:** Doddridge County WV  
 Geographic System: Universal Transverse Mercator (US Survey Feet)  
 Datum: NAD 83 (NAD83 CONUS)  
 Zone: Zone 17N (84 W to 78 W)  
 System Datum: Mean Sea Level

**DESIGN TARGET DETAILS**

Name: Baker Unit 1H  
 Well ID: 14238357.51  
 Actual Well Center: 1745424.15  
 +N/S: 0.0  
 +E/W: 9185.8  
 Northing: 1745424.15  
 Easting: 1745424.15  
 Latitude: 38° 12' 33.472" N  
 Longitude: 80° 37' 45.451" W  
 Design Target: 1745424.15  
 Easting: 1745424.15  
 Northing: 14238357.51  
 Latitude: 38° 12' 33.472" N  
 Longitude: 80° 37' 45.451" W





# Antero Resources

Doddridge County WV  
Trent Pad: Bowen/Cox/Life/Baker/Nestor  
Baker Unit 1H  
Original Welpath

Design: As Drilled

## EOW Completion Report

15 September, 2014



RECEIVED  
Office of Oil and Gas  
NOV 21 2016  
West Virginia Department of  
Environmental Protection



<b>Company:</b>	Antero Resources	<b>Local Co-ordinate Reference:</b>	Well Baker Unit 1H
<b>Project:</b>	Doddridge County WV	<b>TVD Reference:</b>	Precision 525' GL 1410' + 19' KB @ 1429.0usft
<b>Site:</b>	Trent Pad Bowen/Cox/Life/Baker/Nestor	<b>MD Reference:</b>	Precision 525' GL 1410' + 19' KB @ 1429.0usft
<b>Well:</b>	Baker Unit 1H	<b>North Reference:</b>	Grid
<b>Wellbore:</b>	Original Welpath	<b>Survey Calculation Method:</b>	Minimum Curvature
<b>Design:</b>	As Drilled	<b>Database:</b>	Oklahoma District

<b>Project</b>	Doddridge County WV, McClellan District		
<b>Map System:</b>	Universal Transverse Mercator (US Survey Fee	<b>System Datum:</b>	Mean Sea Level
<b>Geo Datum:</b>	NAD 1927 (NADCON CONUS)		
<b>Map Zone:</b>	Zone 17N (84 W to 78 W)		

<b>Site</b>	Trent Pad Bowen/Cox/Life/Baker/Nestor				
<b>Site Position:</b>		<b>Northing:</b>	14,238,330.29 usft	<b>Latitude:</b>	39° 12' 33.204 N
<b>From:</b>	Map	<b>Easting:</b>	1,745,410.61 usft	<b>Longitude:</b>	80° 37' 45.625 W
<b>Position Uncertainty:</b>	0.0 usft	<b>Slot Radius:</b>	13-3/16"	<b>Grid Convergence:</b>	0.23 °

<b>Well</b>	Baker Unit 1H, Marcellus					
<b>Well Position</b>	<b>+N/-S</b>	0.0 usft	<b>Northing:</b>	14,238,357.51 usft	<b>Latitude:</b>	39° 12' 33.472 N
	<b>+E/-W</b>	0.0 usft	<b>Easting:</b>	1,745,424.15 usft	<b>Longitude:</b>	80° 37' 45.451 W
<b>Position Uncertainty</b>	2.0 usft		<b>Wellhead Elevation:</b>	1,426.0 usft	<b>Ground Level:</b>	1,410.0 usft

<b>Wellbore</b>	Original Welpath				
<b>Magnetics</b>	<b>Model Name</b>	<b>Sample Date</b>	<b>Declination (°)</b>	<b>Dip Angle (°)</b>	<b>Field Strength (nT)</b>
	IGRF2010	3/20/2014	-8.55	66.75	52,263

<b>Design</b>	As Drilled				
<b>Audit Notes:</b>					
<b>Version:</b>	1.0	<b>Phase:</b>	ACTUAL	<b>Tie On Depth:</b>	0.0
<b>Vertical Section:</b>	<b>Depth From (TVD) (usft)</b>	<b>+N/-S (usft)</b>	<b>+E/-W (usft)</b>	<b>Direction (°)</b>	
	0.0	0.0	0.0	342.20	

<b>Survey Program</b>	Date 9/15/2014				
<b>From (usft)</b>	<b>To (usft)</b>	<b>Survey (Wellbore)</b>	<b>Tool Name</b>	<b>Description</b>	
34.0	6,034.9	Survey #10 Final Gyro (Original Welpath)	SDI Standard Keeper	Scientific Drilling Intl. Standard Wireline Keeper	
6,112.0	17,914.0	Survey #11 SDI MWD (Original Welpath)	SDI MWD	Scientific Drilling Intl. MWD - Standard ver 1.0.1	

MD (usft)	Inc (°)	Azi (azimuth) (°)	TVD (usft)	N/S (usft)	E/W (usft)	V. Sec (usft)	DLeg (°/100usft)
0.0	0.00	0.00	0.0	0.0	0.0	0.0	0.00
34.0	0.05	188.62	34.0	0.0	0.0	0.0	0.15
59.0	0.10	188.62	59.0	0.0	0.0	0.0	0.20
84.0	0.16	188.62	84.0	-0.1	0.0	0.1	0.24
109.0	0.21	188.62	109.0	-0.2	0.0	0.0	0.20
134.0	0.20	188.95	134.0	-0.3	0.0	0.0	0.04
159.0	0.18	189.86	159.0	-0.4	-0.1	0.0	0.08
184.0	0.17	185.48	184.0	-0.4	-0.1	0.0	0.09
209.0	0.33	178.13	209.0	-0.5	-0.1	0.0	0.65
234.0	0.08	216.90	234.0	-0.6	-0.1	0.0	1.09
259.0	0.10	241.65	259.0	-0.6	-0.1	0.0	0.17

RECEIVED  
 Office of Oil and Gas  
 NOV 21 2016  
 WV Department of Environmental Protection  
 Environmental Protection



EOW Completion Report



<b>Company:</b> Antero Resources	<b>Local Co-ordinate Reference:</b> Well Baker Unit 1H
<b>Project:</b> Doddridge County WV	<b>TVD Reference:</b> Precision 525 GL 1410' + 19' KB @ 1429.0usft
<b>Site:</b> Trent Pad Bowen/Cox/Life/Baker/Nestor	<b>MD Reference:</b> Precision 525 GL 1410' + 19' KB @ 1429.0usft
<b>Well:</b> Baker Unit 1H	<b>North Reference:</b> Gnd
<b>Wellbore:</b> Original Welpath	<b>Survey Calculation Method:</b> Minimum Curvature
<b>Design:</b> As Drilled	<b>Database:</b> Oklahoma District

Survey

MD (usft)	Inc (°)	Azi (azimuth) (°)	TVD (usft)	N/S (usft)	E/W (usft)	V. Sec (usft)	DLeg (°/100usft)
284.0	0.11	213.03	284.0	-0.7	-0.1	-0.6	0.21
309.0	0.11	209.21	309.0	-0.7	-0.2	-0.6	0.03
334.0	0.13	207.66	334.0	-0.8	-0.2	-0.7	0.08
359.0	0.13	188.82	359.0	-0.8	-0.2	-0.7	0.17
384.0	0.08	208.82	384.0	-0.9	-0.2	-0.8	0.25
409.0	0.04	240.33	409.0	-0.9	-0.2	-0.8	0.20
434.0	0.09	195.81	434.0	-0.9	-0.2	-0.8	0.27
459.0	0.10	198.01	459.0	-0.9	-0.3	-0.8	0.04
484.0	0.13	233.29	484.0	-1.0	-0.3	-0.8	0.30
509.0	0.08	121.77	509.0	-1.0	-0.3	-0.9	0.70
534.0	0.01	132.50	534.0	-1.0	-0.3	-0.9	0.28
559.0	0.18	177.34	559.0	-1.1	-0.3	-0.9	0.69
584.0	0.11	191.28	584.0	-1.1	-0.3	-1.0	0.31
609.0	0.10	184.88	609.0	-1.2	-0.3	-1.0	0.06
634.0	0.13	192.78	634.0	-1.2	-0.3	-1.1	0.14
659.0	0.08	131.66	659.0	-1.3	-0.3	-1.1	0.46
684.0	0.07	160.16	684.0	-1.3	-0.3	-1.1	0.15
709.0	0.17	172.33	709.0	-1.3	-0.3	-1.2	0.41
734.0	0.18	179.10	734.0	-1.4	-0.3	-1.3	0.09
759.0	0.15	197.22	759.0	-1.5	-0.3	-1.3	0.24
784.0	0.13	148.40	784.0	-1.5	-0.3	-1.4	0.47
809.0	0.03	322.08	809.0	-1.6	-0.2	-1.4	0.64
834.0	0.23	195.25	834.0	-1.6	-0.3	-1.4	1.00
859.0	0.17	205.85	859.0	-1.7	-0.3	-1.5	0.28
884.0	0.13	204.47	884.0	-1.7	-0.3	-1.6	0.16
909.0	0.11	208.76	909.0	-1.8	-0.3	-1.6	0.09
934.0	0.14	184.20	934.0	-1.8	-0.4	-1.6	0.24
959.0	0.18	145.98	959.0	-1.9	-0.3	-1.7	0.45
984.0	0.11	226.04	984.0	-1.9	-0.3	-1.8	0.78
1,009.0	0.06	166.08	1,009.0	-2.0	-0.3	-1.8	0.38
1,034.0	0.10	121.47	1,034.0	-2.0	-0.3	-1.8	0.28
1,059.0	0.14	179.52	1,059.0	-2.0	-0.3	-1.9	0.49
1,084.0	0.15	213.02	1,084.0	-2.1	-0.3	-1.9	0.34
1,109.0	0.21	174.38	1,109.0	-2.2	-0.3	-2.0	0.53
1,134.0	0.17	142.64	1,134.0	-2.3	-0.3	-2.0	0.44
1,159.0	0.12	155.03	1,159.0	-2.3	-0.3	-2.1	0.23
1,184.0	0.29	162.50	1,184.0	-2.4	-0.2	-2.2	0.69
1,209.0	0.08	155.65	1,209.0	-2.5	-0.2	-2.3	0.84
1,234.0	0.11	271.02	1,234.0	-2.5	-0.2	-2.3	0.85
1,259.0	0.63	292.07	1,259.0	-2.4	-0.4	-2.3	2.12
1,284.0	2.03	304.96	1,284.0	-2.1	-0.9	-2.3	5.69
1,309.0	3.30	304.97	1,309.0	-1.5	-1.8	-2.3	0.08
1,334.0	4.38	306.18	1,333.9	-0.5	-3.2	-2.3	4.33
1,359.0	5.20	305.77	1,358.8	0.7	-4.8	-2.2	3.28

RECEIVED  
 Office of Oil and Gas  
 NOV 20 2016  
 WV Department of Environmental Protection  
 CAMPASS 5000.1 Build 70



EOW Completion Report



<b>Company:</b>	Antero Resources	<b>Local Co-ordinate Reference:</b>	Well Baker Unit 1H
<b>Project:</b>	Doddridge County WV	<b>TVD Reference:</b>	Precision 525: GL 1410' + 19' KB @ 1429.0usft
<b>Site:</b>	Trent Pad:Bowen/Cox/Life/Baker/Nestor	<b>MD Reference:</b>	Precision 525: GL 1410' + 19' KB @ 1429.0usft
<b>Well:</b>	Baker Unit 1H	<b>North Reference:</b>	Grid
<b>Wellbore:</b>	Original Welpath	<b>Survey Calculation Method:</b>	Minimum Curvature
<b>Design:</b>	As Drilled	<b>Database:</b>	Oklahoma District

Survey

MD (usft)	Inc (°)	Azi (azimuth) (°)	TVD (usft)	N/S (usft)	EW (usft)	V. Sec (usft)	DLeg (°/100usft)
1,384.0	5.22	307.10	1,383.7	2.1	-6.7	4.0	0.49
1,409.0	5.27	306.32	1,408.6	3.5	-8.5	5.9	0.35
1,434.0	5.43	305.31	1,433.5	4.8	-10.4	7.8	0.74
1,459.0	5.44	304.75	1,458.4	6.2	-12.4	9.7	0.22
1,484.0	5.25	305.37	1,483.3	7.5	-14.3	11.5	0.79
1,509.0	5.22	304.16	1,508.2	8.8	-16.1	13.3	0.46
1,534.0	5.15	304.12	1,533.1	10.1	-18.0	15.1	0.28
1,559.0	4.98	303.88	1,558.0	11.3	-19.8	16.8	0.69
1,584.0	4.64	302.47	1,582.9	12.5	-21.6	18.5	1.44
1,609.0	4.80	301.58	1,607.8	13.6	-23.3	20.0	0.70
1,634.0	4.58	302.63	1,632.7	14.6	-25.1	21.6	0.94
1,659.0	4.25	303.15	1,657.6	15.7	-26.7	23.1	1.33
1,684.0	3.75	304.57	1,682.6	16.7	-28.1	24.5	2.04
1,709.0	3.54	303.18	1,707.5	17.5	-29.5	25.7	0.91
1,734.0	3.16	305.16	1,732.5	18.4	-30.7	26.9	1.59
1,759.0	2.90	305.90	1,757.5	19.1	-31.7	27.9	1.05
1,784.0	2.61	308.01	1,782.4	19.9	-32.7	28.9	1.23
1,809.0	2.40	307.71	1,807.4	20.5	-33.6	29.8	0.84
1,834.0	2.27	307.25	1,832.4	21.1	-34.4	30.6	0.53
1,859.0	2.08	304.98	1,857.4	21.7	-35.1	31.4	0.83
1,884.0	1.75	308.66	1,882.3	22.2	-35.8	32.1	1.41
1,909.0	1.57	304.69	1,907.3	22.6	-36.4	32.7	0.85
1,934.0	1.32	304.00	1,932.3	23.0	-36.9	33.2	1.00
1,959.0	1.25	310.89	1,957.3	23.3	-37.4	33.6	0.68
1,984.0	1.05	305.77	1,982.3	23.6	-37.8	34.1	0.90
2,009.0	0.96	311.25	2,007.3	23.9	-38.1	34.4	0.53
2,034.0	0.81	311.35	2,032.3	24.2	-38.4	34.8	0.60
2,059.0	0.69	306.57	2,057.3	24.4	-38.6	35.0	0.54
2,084.0	0.57	314.66	2,082.3	24.6	-38.8	35.3	0.60
2,109.0	0.57	298.05	2,107.3	24.7	-39.0	35.5	0.66
2,134.0	0.35	320.47	2,132.3	24.8	-39.2	35.6	1.12
2,159.0	0.38	309.82	2,157.3	24.9	-39.3	35.8	0.30
2,184.0	0.40	308.29	2,182.3	25.0	-39.4	35.9	0.09
2,209.0	0.31	302.33	2,207.3	25.1	-39.6	36.0	0.39
2,234.0	0.29	326.09	2,232.3	25.2	-39.7	36.1	0.50
2,259.0	0.22	304.01	2,257.3	25.3	-39.7	36.2	0.48
2,284.0	0.06	206.52	2,282.3	25.3	-39.8	36.3	0.94
2,309.0	0.13	348.08	2,307.3	25.3	-39.8	36.3	0.72
2,334.0	0.17	328.33	2,332.3	25.4	-39.8	36.3	0.26
2,359.0	0.10	351.63	2,357.3	25.4	-39.8	36.4	0.35
2,384.0	0.11	41.82	2,382.3	25.5	-39.8	36.4	0.36
2,409.0	0.14	2.07	2,407.3	25.5	-39.8	36.5	0.36
2,434.0	0.20	342.76	2,432.3	25.6	-39.8	36.6	0.33
2,459.0	0.09	29.27	2,457.3	25.7	-39.8	36.6	0.61
2,484.0	0.27	39.44	2,482.3	25.7	-39.8	36.7	0.73

RECEIVED  
Office of Oil and Gas  
NOV 21 2016  
WV Department of Environmental Protection





EOW Completion Report



<b>Company:</b>	Antero Resources	<b>Local Co-ordinate Reference:</b>	Well Baker Unit 1H
<b>Project:</b>	Doddridge County WV	<b>TVD Reference:</b>	Precision 525 GL 1410' + 19' KB @ 1429.0usft
<b>Site:</b>	Trent Pad: Bowen/Cox/Life/Baker/Nestor	<b>MD Reference:</b>	Precision 525 GL 1410' + 19' KB @ 1429.0usft
<b>Well:</b>	Baker Unit 1H	<b>North Reference:</b>	Grid
<b>Wellbore:</b>	Original Welpath	<b>Survey Calculation Method:</b>	Minimum Curvature
<b>Design:</b>	As Drilled	<b>Database:</b>	Oklahoma District

Survey

MD (usft)	Inc (")	Azi (azimuth) (")	TVD (usft)	N/S (usft)	E/W (usft)	V. Sec (usft)	DLeg (°/100usft)
2,509.0	0.03	347.17	2,507.3	25.8	-39.7	36.7	1.01
2,534.0	0.07	289.38	2,532.3	25.8	-39.8	36.7	0.24
2,559.0	0.07	353.65	2,557.3	25.8	-39.8	36.7	0.30
2,584.0	0.15	284.92	2,582.3	25.8	-39.8	36.8	0.56
2,609.0	0.08	320.75	2,607.3	25.9	-39.9	36.8	0.39
2,634.0	0.11	283.83	2,632.3	25.9	-39.9	36.8	0.27
2,659.0	0.10	321.65	2,657.3	25.9	-39.9	36.9	0.27
2,684.0	0.15	329.91	2,682.3	25.9	-40.0	36.9	0.21
2,709.0	0.12	301.49	2,707.3	26.0	-40.0	37.0	0.29
2,734.0	0.20	334.46	2,732.3	26.0	-40.0	37.0	0.48
2,759.0	0.19	334.13	2,757.3	26.1	-40.1	37.1	0.04
2,784.0	0.18	310.88	2,782.3	26.2	-40.1	37.2	0.30
2,809.0	0.15	322.06	2,807.3	26.2	-40.2	37.3	0.18
2,834.0	0.10	317.20	2,832.3	26.3	-40.2	37.3	0.20
2,859.0	0.10	334.85	2,857.3	26.3	-40.2	37.3	0.12
2,884.0	0.11	329.51	2,882.3	26.3	-40.3	37.4	0.06
2,909.0	0.06	287.21	2,907.3	26.4	-40.3	37.4	0.31
2,934.0	0.06	336.34	2,932.3	26.4	-40.3	37.4	0.20
2,959.0	0.07	268.20	2,957.3	26.4	-40.3	37.5	0.29
2,984.0	0.13	309.27	2,982.3	26.4	-40.4	37.5	0.36
3,009.0	0.16	347.80	3,007.3	26.5	-40.4	37.5	0.40
3,034.0	0.12	311.65	3,032.3	26.5	-40.4	37.6	0.38
3,059.0	0.12	22.08	3,057.3	26.6	-40.4	37.6	0.55
3,084.0	0.03	344.99	3,082.3	26.6	-40.4	37.7	0.39
3,109.0	0.06	308.71	3,107.3	26.6	-40.4	37.7	0.16
3,134.0	0.09	281.58	3,132.3	26.6	-40.5	37.7	0.18
3,159.0	0.15	316.27	3,157.3	26.6	-40.5	37.7	0.37
3,184.0	0.09	252.41	3,182.3	26.7	-40.5	37.8	0.55
3,209.0	0.18	280.00	3,207.3	26.7	-40.6	37.8	0.43
3,234.0	0.15	267.97	3,232.3	26.7	-40.7	37.8	0.18
3,259.0	0.13	264.04	3,257.3	26.7	-40.7	37.8	0.09
3,284.0	0.21	318.21	3,282.3	26.7	-40.8	37.9	0.68
3,309.0	0.15	287.80	3,307.3	26.7	-40.8	37.9	0.44
3,334.0	0.10	248.02	3,332.3	26.7	-40.9	38.0	0.39
3,359.0	0.11	266.51	3,357.3	26.7	-40.9	38.0	0.14
3,384.0	0.14	272.68	3,382.3	26.7	-41.0	38.0	0.13
3,409.0	0.04	51.15	3,407.3	26.7	-41.0	38.0	0.69
3,434.0	0.11	250.27	3,432.3	26.7	-41.0	38.0	0.59
3,459.0	0.04	168.25	3,457.3	26.7	-41.1	38.0	0.45
3,484.0	0.14	279.13	3,482.3	26.7	-41.1	38.0	0.63
3,509.0	0.03	212.39	3,507.3	26.7	-41.1	38.0	0.52
3,534.0	0.16	240.65	3,532.3	26.7	-41.2	38.0	0.54
3,559.0	0.05	38.28	3,557.3	26.7	-41.2	38.0	0.83
3,584.0	0.07	125.73	3,582.3	26.7	-41.2	38.0	0.34

RECEIVED  
 Office of Oil and Gas  
 NOV 21 2016  
 WV Department of Environmental Protection



EOW Completion Report



<b>Company:</b> Antero Resources	<b>Local Co-ordinate Reference:</b> Well Baker Unit 1H
<b>Project:</b> Doddridge County WV	<b>TVD Reference:</b> Precision 525 GL 1410' + 19' KB @ 1429.0usft
<b>Site:</b> Trent Pad:Bowen/Cox/Life/Baker/Nestor	<b>MD Reference:</b> Precision 525 GL 1410' + 19' KB @ 1429.0usft
<b>Well:</b> Baker Unit 1H	<b>North Reference:</b> Grid
<b>Wellbore:</b> Original Welpath	<b>Survey Calculation Method:</b> Minimum Curvature
<b>Design:</b> As Drilled	<b>Database:</b> Oklahoma District

Survey

MD (usft)	Inc (°)	Azi (azimuth) (°)	TVD (usft)	N/S (usft)	E/W (usft)	V. Sec (usft)	DLeg (°/100usft)
3,609.0	0.14	225.11	3,607.3	26.7	-41.2	38.0	0.67
3,634.0	0.13	299.22	3,632.3	26.6	-41.2	38.0	0.65
3,659.0	0.08	353.82	3,657.3	26.7	-41.2	38.0	0.42
3,684.0	0.11	42.48	3,682.3	26.7	-41.2	38.0	0.33
3,709.0	0.07	355.98	3,707.3	26.7	-41.2	38.1	0.32
3,734.0	0.28	244.04	3,732.3	26.7	-41.3	38.1	1.25
3,759.0	0.02	107.97	3,757.3	26.7	-41.3	38.1	1.18
3,784.0	0.18	349.76	3,782.3	26.7	-41.3	38.1	0.76
3,809.0	0.12	17.53	3,807.3	26.8	-41.3	38.2	0.37
3,834.0	0.08	355.26	3,832.3	26.8	-41.3	38.2	0.22
3,859.0	0.27	244.36	3,857.3	26.8	-41.4	38.2	1.23
3,884.0	0.10	339.38	3,882.3	26.8	-41.4	38.2	1.18
3,909.0	0.11	317.49	3,907.3	26.9	-41.5	38.3	0.16
3,934.0	0.11	228.50	3,932.3	26.9	-41.5	38.3	0.62
3,959.0	0.40	219.43	3,957.3	26.8	-41.6	38.2	1.17
3,984.0	1.24	225.66	3,982.3	26.5	-41.8	38.0	3.37
4,009.0	2.07	230.40	4,007.3	26.1	-42.3	37.8	3.36
4,034.0	3.00	238.42	4,032.3	25.4	-43.3	37.4	3.97
4,059.0	3.96	240.89	4,057.2	24.7	-44.6	37.1	3.89
4,084.0	5.08	244.68	4,082.1	23.8	-46.3	36.8	4.63
4,109.0	6.07	243.20	4,107.0	22.7	-48.5	36.4	4.00
4,134.0	6.30	242.26	4,131.9	21.5	-50.9	36.0	1.01
4,159.0	6.23	233.16	4,156.7	20.0	-53.2	35.3	3.98
4,184.0	6.50	227.47	4,181.6	18.2	-55.3	34.3	2.74
4,209.0	6.72	224.41	4,206.4	16.2	-57.4	33.0	1.66
4,234.0	6.86	223.84	4,231.2	14.1	-59.4	31.6	0.62
4,259.0	6.93	224.23	4,256.0	12.0	-61.5	30.2	0.34
4,284.0	6.98	225.93	4,280.9	9.8	-63.7	28.8	0.85
4,309.0	7.41	228.03	4,305.7	7.7	-66.0	27.5	2.02
4,334.0	8.03	231.14	4,330.4	5.5	-68.5	26.2	2.99
4,359.0	8.84	235.12	4,355.2	3.3	-71.5	25.0	3.99
4,384.0	9.24	237.64	4,379.9	1.2	-74.7	23.9	2.25
4,409.0	9.76	238.50	4,404.5	-1.0	-78.2	22.9	2.16
4,434.0	10.28	238.95	4,429.1	-3.3	-82.0	21.9	2.10
4,459.0	10.32	238.83	4,453.7	-5.6	-85.8	20.9	0.18
4,484.0	10.66	236.96	4,478.3	-8.0	-89.6	19.8	1.92
4,509.0	10.80	236.79	4,502.9	-10.6	-93.5	18.5	0.57
4,534.0	11.25	236.72	4,527.4	-13.2	-97.5	15.9	1.80
4,559.0	12.04	236.90	4,551.9	-15.9	-101.8	13.0	3.16
4,584.0	12.75	237.29	4,576.3	-18.9	-106.3	10.0	2.86
4,609.0	13.95	237.24	4,600.6	-22.0	-111.1	7.0	4.80
4,634.0	15.21	237.08	4,624.8	-25.4	-116.4	4.0	5.04
4,659.0	15.95	237.79	4,648.9	-29.0	-121.1	1.0	3.06
4,684.0	17.00	239.15	4,672.9	-32.7	-128.1	0.0	4.47

RECEIVED  
Office of Oil and Gas  
NOV 21 2016  
WV Department of Environmental Protection



<b>Company:</b> Antero Resources	<b>Local Co-ordinate Reference:</b> Well Baker Unit 1H
<b>Project:</b> Doddridge County WV	<b>TVD Reference:</b> Precision 525: GL 1410' + 19' KB @ 1429.0usft
<b>Site:</b> Trent Pad.Bowen/Cox/Life/Baker/Nestor	<b>MD Reference:</b> Precision 525: GL 1410' + 19' KB @ 1429.0usft
<b>Well:</b> Baker Unit 1H	<b>North Reference:</b> Grd
<b>Wellbore:</b> Original Welpath	<b>Survey Calculation Method:</b> Minimum Curvature
<b>Design:</b> As Drilled	<b>Database:</b> Oklahoma District

Survey

MD (usft)	Inc (°)	Azi (azimuth) (°)	TVD (usft)	N/S (usft)	E/W (usft)	V. Sec (usft)	DLeg (°/100usft)
4,709.0	18.33	240.34	4,696.7	-36.5	-134.7	6.4	5.51
4,734.0	19.54	239.69	4,720.4	-40.6	-141.7	4.7	4.91
4,759.0	20.30	239.77	4,743.9	-44.9	-149.0	2.8	3.04
4,784.0	21.29	239.52	4,767.2	-49.4	-156.7	0.9	3.98
4,809.0	22.62	238.56	4,790.4	-54.2	-164.7	-1.2	5.51
4,834.0	23.99	237.56	4,813.4	-59.4	-173.1	-3.6	5.70
4,859.0	25.08	236.92	4,836.1	-65.0	-181.8	-6.3	4.49
4,884.0	26.37	236.37	4,858.6	-71.0	-190.9	-9.2	5.25
4,909.0	27.77	235.89	4,880.9	-77.3	-200.3	-12.4	5.67
4,934.0	29.02	235.54	4,902.9	-84.0	-210.2	-15.8	5.04
4,959.0	29.36	235.60	4,924.7	-90.9	-220.2	-19.3	1.37
4,984.0	29.25	235.08	4,946.5	-97.9	-230.3	-22.8	1.11
5,009.0	28.79	234.30	4,968.4	-104.9	-240.2	-26.5	2.38
5,034.0	28.18	233.69	4,990.4	-111.9	-249.8	-30.2	2.70
5,059.0	27.69	232.86	5,012.4	-118.9	-259.2	-34.0	2.50
5,084.0	26.93	232.11	5,034.7	-125.9	-268.3	-37.8	3.34
5,109.0	26.48	231.84	5,057.0	-132.8	-277.2	-41.7	1.86
5,134.0	26.37	232.41	5,079.4	-139.6	-285.9	-45.5	1.11
5,159.0	26.32	233.87	5,101.8	-146.3	-294.8	-49.2	2.60
5,184.0	25.85	237.05	5,124.2	-152.5	-303.9	-52.3	5.90
5,209.0	25.76	239.16	5,146.7	-158.3	-313.1	-55.0	3.69
5,234.0	25.73	240.87	5,169.3	-163.7	-322.5	-57.3	2.97
5,259.0	25.73	241.66	5,191.8	-168.9	-332.0	-59.3	1.37
5,284.0	25.42	241.34	5,214.3	-174.1	-341.5	-61.3	1.36
5,309.0	25.13	240.68	5,236.9	-179.2	-350.9	-63.4	1.62
5,334.0	25.14	240.55	5,259.6	-184.5	-360.1	-65.5	0.22
5,359.0	25.23	240.30	5,282.2	-189.7	-369.4	-67.7	0.56
5,384.0	25.49	240.00	5,304.8	-195.0	-378.6	-69.9	1.16
5,409.0	25.82	239.38	5,327.3	-200.5	-388.0	-72.3	1.70
5,434.0	25.92	238.31	5,349.8	-206.1	-397.3	-74.8	1.91
5,459.0	26.07	237.97	5,372.3	-211.9	-406.6	-77.5	0.85
5,484.0	26.45	237.83	5,394.7	-217.8	-416.0	-80.2	1.54
5,509.0	26.83	237.82	5,417.1	-223.8	-425.5	-83.0	1.52
5,534.0	27.24	238.68	5,439.3	-229.8	-435.2	-85.7	2.27
5,559.0	27.80	240.06	5,461.5	-235.6	-445.1	-88.3	3.39
5,584.0	28.65	240.33	5,483.5	-241.5	-455.4	-90.8	3.44
5,609.0	28.52	240.28	5,505.5	-247.4	-465.7	-93.2	0.53
5,634.0	28.05	239.96	5,527.5	-253.3	-476.0	-95.7	1.98
5,659.0	27.39	239.10	5,549.6	-259.2	-486.0	-98.2	3.09
5,684.0	26.87	238.45	5,571.9	-265.1	-495.8	-100.9	2.47
5,709.0	26.32	237.82	5,594.2	-271.1	-505.3	-103.6	2.24
5,734.0	25.70	237.04	5,616.7	-277.0	-514.5	-106.4	2.24
5,759.0	25.23	236.11	5,639.3	-282.9	-523.5	-109.3	2.47
5,784.0	24.77	236.01	5,661.9	-288.8	-532.3	-112.2	1.85

RECEIVED  
 Office of Oil and Gas  
 Nov 1 2016  
 WV Department of Environmental Protection  
 COMPASS 5000.1 Build 70





<b>Company:</b> Antero Resources	<b>Local Co-ordinate Reference:</b> Well Baker Unit 1H
<b>Project:</b> Doddridge County WV	<b>TVD Reference:</b> Precision 525: GL 1410' + 19' KB @ 1429.0usft
<b>Site:</b> Trent Pad:Bowen/Cox/Life/Baker/Nestor	<b>MD Reference:</b> Precision 525: GL 1410' + 19' KB @ 1429.0usft
<b>Well:</b> Baker Unit 1H	<b>North Reference:</b> Grid
<b>Wellbore:</b> Original Welpath	<b>Survey Calculation Method:</b> Minimum Curvature
<b>Design:</b> As Drilled	<b>Database:</b> Oklahoma District

**Survey**

MD (usft)	Inc (°)	Azi (azimuth) (°)	TVD (usft)	N/S (usft)	E/W (usft)	V. Sec (usft)	DLeg (°/100usft)
5,809.0	24.14	235.74	5,684.7	-294.6	-540.8	-115.1	2.56
5,834.0	23.80	237.19	5,707.5	-300.2	-549.3	-117.9	2.72
5,859.0	23.60	238.01	5,730.4	-305.6	-557.8	-120.4	1.54
5,884.0	23.61	238.42	5,753.3	-310.8	-566.3	-122.9	0.66
5,909.0	24.14	239.45	5,776.2	-316.1	-575.0	-125.2	2.70
5,934.0	24.97	240.45	5,798.9	-321.3	-584.0	-127.4	3.71
5,959.0	25.80	241.39	5,821.5	-326.5	-593.3	-129.5	3.69
5,984.0	26.56	241.69	5,843.9	-331.7	-603.0	-131.5	3.09
6,009.0	26.64	242.06	5,866.3	-337.0	-612.9	-133.5	0.74
6,034.0	26.38	241.80	5,888.7	-342.3	-622.7	-135.5	1.14
6,034.9	26.37	241.79	5,889.5	-342.4	-623.1	-135.6	1.22
6,112.0	25.13	238.09	5,958.9	-359.2	-652.1	-142.7	2.63
6,202.0	25.11	237.66	6,040.4	-379.5	-684.4	-152.1	0.20
6,292.0	24.63	239.60	6,122.1	-399.2	-716.7	-161.0	1.05
6,381.0	24.65	238.70	6,203.0	-418.2	-748.6	-169.4	0.42
6,471.0	25.22	239.32	6,284.6	-437.8	-781.1	-178.0	0.70
6,561.0	25.25	238.35	6,366.0	-457.6	-814.0	-186.9	0.46
6,651.0	25.86	237.06	6,447.2	-478.4	-846.8	-196.6	0.92
6,741.0	26.44	237.90	6,528.0	-499.7	-880.2	-206.7	0.76
6,831.0	26.24	239.55	6,608.6	-520.4	-914.3	-216.0	0.84
6,921.0	27.08	238.20	6,689.1	-541.3	-948.9	-225.3	1.15
7,011.0	26.82	238.25	6,769.3	-562.8	-983.6	-235.2	0.29
7,100.0	26.28	239.28	6,848.9	-583.4	-1,017.6	-244.4	0.80
7,145.0	25.84	239.43	6,889.3	-593.5	-1,034.6	-248.8	0.99
7,190.0	26.25	239.33	6,929.8	-603.6	-1,051.6	-253.2	0.92
7,228.0	26.28	246.85	6,963.8	-611.2	-1,066.6	-255.9	8.75
<b>Sycamore</b>							
7,235.0	26.33	248.23	6,970.1	-612.3	-1,069.4	-256.1	8.75
7,280.0	27.89	261.85	7,010.2	-617.5	-1,089.1	-255.0	14.19
7,325.0	28.84	273.99	7,049.8	-618.3	-1,110.4	-249.2	12.97
7,370.0	29.86	282.50	7,089.1	-615.1	-1,132.2	-239.5	9.53
7,415.0	32.52	291.38	7,127.6	-608.3	-1,154.4	-226.2	11.79
7,417.0	32.61	291.79	7,129.3	-607.9	-1,155.4	-225.6	11.90
<b>Middlesex</b>							
7,459.0	34.89	299.80	7,164.2	-597.7	-1,176.3	-209.5	11.90
7,504.0	38.50	304.56	7,200.3	-583.3	-1,199.1	-188.9	10.21
7,549.0	42.20	307.90	7,234.6	-566.1	-1,222.5	-165.3	9.52
7,594.0	45.17	313.07	7,267.1	-545.8	-1,246.1	-138.8	10.32
7,609.0	46.05	314.43	7,277.6	-538.5	-1,253.9	-138.8	8.76
<b>Burkett</b>							
7,639.0	47.87	317.03	7,298.1	-522.8	-1,269.2	-159.9	8.76
7,653.0	48.87	318.44	7,307.4	-515.0	-1,276.2	-100.3	10.37
<b>Tully</b>							
7,684.0	51.15	321.40	7,327.3	-496.9	-1,281.5	-78.3	10.37
7,729.0	55.31	325.14	7,354.3	-468.0	-1,313.0	-44.2	11.39

RECEIVED  
 Office of Oil and Gas  
 WV Department of Environmental Protection  
 NOV 21 2016



<b>Company:</b>	Antero Resources	<b>Local Co-ordinate Reference:</b>	Well Baker Unit 1H
<b>Project:</b>	Doddridge County WV	<b>TVD Reference:</b>	Precision 525: GL 1410' + 19' KB @ 1429 0usft
<b>Site:</b>	Trent Pad: Bowen/Cox/Life/Baker/Nestor	<b>MD Reference:</b>	Precision 525: GL 1410' + 19' KB @ 1429 0usft
<b>Well:</b>	Baker Unit 1H	<b>North Reference:</b>	Grid
<b>Wellbore:</b>	Original Welpath	<b>Survey Calculation Method:</b>	Minimum Curvature
<b>Design:</b>	As Drilled	<b>Database:</b>	Oklahoma District

**Survey**

MD (usft)	Inc (°)	Azi (azimuth) (°)	TVD (usft)	N/S (usft)	E/W (usft)	V. Sec (usft)	DLeg (°/100usft)
7,774.0	59.74	330.54	7,378.4	-435.8	-1,333.2	-7.4	14.12
7,792.0	61.42	331.42	7,387.3	-422.1	-1,340.8	7.9	10.25
<b>Hamilton</b>							
7,819.0	63.94	332.70	7,399.7	-400.9	-1,352.0	31.6	10.25
7,864.0	68.07	335.11	7,418.0	-364.0	-1,370.1	72.2	10.40
7,876.0	69.62	335.55	7,422.3	-353.9	-1,374.7	83.3	13.36
<b>Marcellus</b>							
7,909.0	73.89	336.71	7,432.6	-325.2	-1,387.4	114.5	13.36
7,953.0	80.14	336.64	7,442.5	-285.9	-1,404.4	157.1	14.21
7,969.0	82.19	336.91	7,445.0	-271.3	-1,410.6	172.9	12.92
8,027.0	89.78	339.91	7,449.0	-217.6	-1,431.9	230.6	14.07
8,062.0	91.54	342.98	7,448.6	-184.4	-1,443.0	265.6	10.11
8,152.0	89.43	342.63	7,447.9	-98.4	-1,469.6	355.5	2.38
8,242.0	91.36	343.77	7,447.2	-12.3	-1,495.6	445.5	2.49
8,332.0	91.80	343.25	7,444.8	74.0	-1,521.2	535.5	0.76
8,422.0	90.48	344.30	7,443.0	160.4	-1,546.3	625.4	1.87
8,511.0	90.48	343.42	7,442.2	245.9	-1,571.0	714.4	0.99
8,601.0	90.84	344.30	7,441.2	332.3	-1,596.1	804.3	1.06
8,691.0	89.34	339.64	7,441.0	417.9	-1,623.9	894.3	5.44
8,781.0	89.78	339.03	7,441.7	502.1	-1,655.7	984.2	0.84
8,871.0	90.57	341.75	7,441.5	586.9	-1,685.9	1,074.1	3.15
8,961.0	90.84	341.93	7,440.4	672.4	-1,713.9	1,164.1	0.36
9,051.0	89.34	339.64	7,440.2	757.3	-1,743.5	1,254.1	3.04
9,140.0	90.57	342.72	7,440.3	841.8	-1,772.2	1,343.1	3.73
9,230.0	90.75	342.63	7,439.2	927.5	-1,799.0	1,433.0	0.22
9,320.0	90.66	344.74	7,438.1	1,013.8	-1,824.3	1,523.0	2.35
9,410.0	90.84	343.60	7,437.0	1,100.4	-1,848.9	1,612.9	1.28
9,500.0	90.57	344.30	7,435.9	1,186.9	-1,873.8	1,702.9	0.83
9,589.0	90.48	344.65	7,435.0	1,272.7	-1,897.6	1,791.8	0.41
9,679.0	90.57	344.39	7,434.2	1,359.4	-1,921.6	1,881.7	0.31
9,769.0	90.66	344.30	7,433.2	1,446.0	-1,945.9	1,971.7	0.14
9,859.0	90.57	342.54	7,432.3	1,532.3	-1,971.6	2,061.6	1.96
9,949.0	90.48	342.37	7,431.5	1,618.1	-1,998.7	2,151.6	0.21
10,038.0	90.40	342.45	7,430.8	1,702.9	-2,025.6	2,240.6	0.13
10,128.0	90.75	341.31	7,429.9	1,788.5	-2,053.6	2,330.6	1.32
10,218.0	90.92	340.96	7,428.6	1,873.6	-2,082.7	2,420.6	0.43
10,308.0	89.87	339.99	7,427.9	1,958.4	-2,112.7	2,510.6	1.59
10,397.0	90.04	339.91	7,428.0	2,042.1	-2,143.3	2,599.5	0.21
10,487.0	90.57	341.49	7,427.5	2,127.0	-2,173.0	2,689.4	1.85
10,577.0	89.78	340.87	7,427.3	2,212.2	-2,202.0	2,779.4	0.36
10,667.0	90.04	342.98	7,427.4	2,297.7	-2,230.0	2,869.0	0.36
10,757.0	89.52	342.54	7,427.7	2,383.7	-2,256.6	2,959.4	0.68
10,847.0	89.69	344.39	7,428.4	2,470.0	-2,282.2	3,049.4	2.06
10,936.0	91.71	345.44	7,427.3	2,555.9	-2,305.4	3,139.3	2.56

RECEIVED  
 Dept. of Oil and Gas  
 WV Department of Environmental Protection  
 Nov 21 2016

<b>Company:</b>	Antero Resources	<b>Local Co-ordinate Reference:</b>	Well Baker Unit 1H
<b>Project:</b>	Doddridge County WV	<b>TVD Reference:</b>	Precision 525: GL 1410' + 19' KB @ 1429.0usft
<b>Site:</b>	Trent Pad: Bowen/Cox/Life/Baker/Nestor	<b>MD Reference:</b>	Precision 525: GL 1410' + 19' KB @ 1429.0usft
<b>Well:</b>	Baker Unit 1H	<b>North Reference:</b>	Grid
<b>Wellbore:</b>	Original Welpath	<b>Survey Calculation Method:</b>	Minimum Curvature
<b>Design:</b>	As Drilled	<b>Database:</b>	Oklahoma District

**Survey**

MD (usft)	Inc (°)	Azi (azimuth) (°)	TVD (usft)	N/S (usft)	E/W (usft)	V. Sec (usft)	DLeg (°/100usft)
11,026.0	90.75	343.25	7,425.3	2,642.5	-2,329.7	3,228.2	2.66
11,116.0	90.13	342.45	7,424.6	2,728.5	-2,356.2	3,318.2	1.12
11,206.0	90.13	342.28	7,424.4	2,814.3	-2,383.5	3,408.2	0.19
11,295.0	90.31	341.58	7,424.1	2,898.9	-2,411.1	3,497.2	0.81
11,385.0	90.75	342.10	7,423.3	2,984.4	-2,439.1	3,587.2	0.76
11,474.0	90.31	342.72	7,422.4	3,069.2	-2,466.0	3,676.2	0.85
11,567.0	91.01	342.02	7,421.4	3,157.9	-2,494.2	3,769.2	1.06
11,661.0	90.31	342.89	7,420.3	3,247.5	-2,522.5	3,863.2	1.19
11,755.0	90.75	343.07	7,419.4	3,337.4	-2,550.0	3,957.1	0.51
11,849.0	90.04	341.40	7,418.8	3,426.9	-2,578.7	4,051.1	1.93
11,943.0	90.40	341.75	7,418.4	3,516.1	-2,608.4	4,145.1	0.53
12,037.0	90.75	342.02	7,417.5	3,605.4	-2,637.7	4,239.1	0.47
12,131.0	91.01	342.28	7,416.0	3,694.9	-2,666.5	4,333.1	0.39
12,224.0	91.10	341.58	7,414.3	3,783.3	-2,695.3	4,426.1	0.76
12,318.0	90.31	341.40	7,413.2	3,872.4	-2,725.2	4,520.1	0.86
12,412.0	89.52	337.44	7,413.3	3,960.4	-2,758.2	4,613.9	4.30
12,505.0	90.04	341.14	7,413.7	4,047.3	-2,791.1	4,706.8	4.02
12,600.0	89.96	339.29	7,413.7	4,136.7	-2,823.2	4,801.7	1.95
12,690.0	89.25	338.85	7,414.3	4,220.8	-2,855.4	4,891.6	0.93
12,779.0	89.52	341.75	7,415.2	4,304.6	-2,885.4	4,980.5	3.27
12,869.0	90.04	343.95	7,415.6	4,390.6	-2,911.9	5,070.5	2.51
12,959.0	89.69	344.48	7,415.8	4,477.2	-2,936.4	5,160.5	0.71
13,049.0	90.40	344.74	7,415.7	4,563.9	-2,980.3	5,250.4	0.84
13,138.0	89.96	343.25	7,415.4	4,649.5	-2,984.8	5,339.3	1.75
13,228.0	90.04	343.25	7,415.4	4,735.7	-3,010.8	5,429.3	0.09
13,318.0	90.13	343.51	7,415.3	4,821.9	-3,036.5	5,519.3	0.31
13,408.0	89.60	342.89	7,415.5	4,908.1	-3,062.5	5,609.3	0.91
13,497.0	90.22	342.72	7,415.7	4,993.1	-3,088.8	5,698.3	0.72
13,587.0	89.52	343.95	7,415.9	5,079.3	-3,114.6	5,788.3	1.57
13,677.0	89.69	343.51	7,416.5	5,165.7	-3,139.8	5,878.2	0.52
13,767.0	90.04	343.16	7,416.7	5,251.9	-3,165.7	5,968.2	0.55
13,856.0	89.78	343.07	7,416.8	5,337.1	-3,191.5	6,057.2	0.31
13,946.0	88.99	342.98	7,417.8	5,423.1	-3,217.8	6,147.2	0.88
14,036.0	89.69	343.42	7,418.8	5,509.3	-3,243.8	6,237.2	0.92
14,125.0	89.69	342.02	7,419.3	5,594.3	-3,270.2	6,326.2	1.57
14,215.0	90.40	341.14	7,419.2	5,679.7	-3,298.7	6,416.2	1.26
14,305.0	89.78	340.87	7,419.1	5,764.8	-3,328.0	6,506.1	0.75
14,394.0	90.40	341.84	7,419.0	5,849.1	-3,356.4	6,595.1	1.29
14,484.0	89.78	341.40	7,418.8	5,934.5	-3,384.8	6,685.1	0.84
14,573.0	89.52	341.40	7,419.4	6,018.8	-3,413.2	6,774.1	0.29
14,663.0	89.78	342.19	7,419.9	6,104.3	-3,441.3	6,864.1	0.92
14,753.0	89.87	342.63	7,420.2	6,190.1	-3,468.5	6,954.1	0.50
14,843.0	89.34	342.19	7,420.8	6,275.9	-3,495.7	7,044.1	0.77
14,933.0	88.64	342.37	7,422.4	6,361.6	-3,523.1	7,134.1	0.80
15,022.0	89.16	342.72	7,424.1	6,446.5	-3,549.8	7,223.1	0.70



EOW Completion Report



<b>Company:</b>	Antero Resources	<b>Local Co-ordinate Reference:</b>	Well Baker Unit 1H
<b>Project:</b>	Doddridge County WV	<b>TVD Reference:</b>	Precision 525: GL 1410' + 19' KB @ 1429.0usft
<b>Site:</b>	Trent Pad Bowen/Cox/Life/Baker/Nestor	<b>MD Reference:</b>	Precision 525: GL 1410' + 19' KB @ 1429.0usft
<b>Well:</b>	Baker Unit 1H	<b>North Reference:</b>	Grid
<b>Wellbore:</b>	Original Welpath	<b>Survey Calculation Method:</b>	Minimum Curvature
<b>Design:</b>	As Drilled	<b>Database:</b>	Oklahoma District

Survey

MD (usft)	Inc (°)	Azi (azimuth) (°)	TVD (usft)	N/S (usft)	E/W (usft)	V. Sec (usft)	DLeg (°/100usft)
15,112.0	89.87	342.37	7,424.9	6,532.4	-3,576.8	7,313.1	0.88
15,202.0	88.99	341.93	7,425.8	6,618.0	-3,604.3	7,403.1	1.09
15,291.0	89.69	342.10	7,426.8	6,702.7	-3,631.8	7,492.1	0.81
15,381.0	90.48	343.33	7,426.7	6,788.6	-3,658.6	7,582.0	1.62
15,471.0	88.90	341.22	7,427.1	6,874.3	-3,686.0	7,672.0	2.93
15,560.0	89.16	341.14	7,428.7	6,958.6	-3,714.7	7,761.0	0.31
15,650.0	90.13	340.61	7,429.2	7,043.6	-3,744.2	7,851.0	1.23
15,740.0	90.13	341.58	7,429.0	7,128.7	-3,773.3	7,941.0	1.08
15,830.0	89.43	341.05	7,429.4	7,214.0	-3,802.1	8,031.0	0.98
15,919.0	90.04	341.93	7,429.8	7,298.4	-3,830.4	8,119.9	1.20
16,009.0	90.48	342.63	7,429.4	7,384.1	-3,857.8	8,209.9	0.92
16,099.0	90.31	341.22	7,428.7	7,469.7	-3,885.7	8,299.9	1.58
16,189.0	91.10	340.52	7,427.6	7,554.7	-3,915.2	8,389.9	1.17
16,279.0	90.84	342.19	7,426.1	7,640.0	-3,944.0	8,479.9	1.88
16,368.0	91.28	340.52	7,424.5	7,724.3	-3,972.4	8,568.9	1.94
16,458.0	90.75	342.72	7,422.8	7,809.7	-4,000.8	8,658.8	2.51
16,548.0	89.16	343.95	7,422.9	7,895.9	-4,026.6	8,748.8	2.23
16,638.0	89.34	344.04	7,424.1	7,982.4	-4,051.4	8,838.8	0.22
16,727.0	89.96	344.56	7,424.7	8,068.1	-4,075.5	8,927.7	0.91
16,817.0	89.25	342.98	7,425.3	8,154.5	-4,100.7	9,017.7	1.92
16,907.0	89.60	343.69	7,426.2	8,240.7	-4,126.5	9,107.6	0.88
16,996.0	91.10	343.95	7,425.6	8,326.1	-4,151.3	9,196.6	1.71
17,086.0	89.34	342.63	7,425.3	8,412.3	-4,177.1	9,286.6	2.44
17,176.0	89.43	342.37	7,426.3	8,498.2	-4,204.2	9,376.6	0.31
17,266.0	90.22	341.84	7,426.5	8,583.8	-4,231.8	9,466.6	1.06
17,355.0	89.96	341.40	7,426.4	8,668.3	-4,259.9	9,555.6	0.57
17,445.0	89.16	342.19	7,427.1	8,753.8	-4,288.0	9,645.5	1.25
17,535.0	90.31	342.28	7,427.5	8,839.5	-4,315.5	9,735.5	1.28
17,625.0	88.99	341.49	7,428.0	8,925.0	-4,343.5	9,825.5	1.71
17,714.0	88.55	339.99	7,430.0	9,009.0	-4,372.8	9,914.5	1.76
17,804.0	89.52	339.82	7,431.5	9,093.5	-4,403.7	10,004.4	1.09
17,855.0	89.69	339.99	7,431.8	9,141.4	-4,421.3	10,055.4	0.47
17,914.0	89.69	339.99	7,432.1	9,196.8	-4,441.4	10,114.3	0.00

RECEIVED  
Office of Oil and Gas  
NOV 21 2016  
WV Department of  
Environmental Protection  
COMPASS 5000.1 Build 70



<b>Company:</b>	Antero Resources	<b>Local Co-ordinate Reference:</b>	Well Baker Unit 1H
<b>Project:</b>	Doddridge County WV	<b>TVD Reference:</b>	Precision 525 GL 1410' + 19' KB @ 1429.0usft
<b>Site:</b>	Trent Pad: Bowen/Cox/Life/Baker/Nestor	<b>MD Reference:</b>	Precision 525 GL 1410' + 19' KB @ 1429.0usft
<b>Well:</b>	Baker Unit 1H	<b>North Reference:</b>	Grid
<b>Wellbore:</b>	Original Welpath	<b>Survey Calculation Method:</b>	Minimum Curvature
<b>Design:</b>	As Drilled	<b>Database:</b>	Oklahoma District

**Design Annotations**

Measured Depth (usft)	Vertical Depth (usft)	Local Coordinates		Comment
		+N/-S (usft)	+E/-W (usft)	
7,228.0	6,963.8	-611.2	-1,066.6	Sycamore
7,417.0	7,129.3	-607.9	-1,155.4	Middlesex
7,609.0	7,277.6	-538.5	-1,253.9	Burkett
7,653.0	7,307.4	-515.0	-1,276.2	Tully
7,792.0	7,387.3	-422.1	-1,340.8	Hamilton
7,876.0	7,422.3	-353.9	-1,374.7	Marcellus

Checked By: _____	Approved By: _____	Date: _____
-------------------	--------------------	-------------

RECEIVED  
 Office of Oil and Gas  
 NOV 21 2016  
 WV Department of  
 Environmental Protection