

APPROVED

WR-35
Rev. 8/23/13

NAME: John Fur
DATE: 1/27/16

Page ___ of ___

State of West Virginia

Department of Environmental Protection - Office of Oil and Gas Well Operator's Report of Well Work

API 47 - 017 - 06469 County Doddridge District Greenbrier
Quad New Milton 7.5' Pad Name Trent Pad Field/Pool Name ---
Farm name Trent, Clarence, Jr., et al Well Number Baker Unit 2H
Operator (as registered with the OOG) Antero Resources Corporation
Address 1615 Wynkoop St. City Denver State CO Zip 80202

As Drilled location NAD 83/UTM Attach an as-drilled plat, profile view, and deviation survey
Top hole Northing 4340081m Easting 532022m
Landing Point of Curve Northing 4340320.80m Easting 531698.86m
Bottom Hole Northing 4342965m Easting 530849m

Elevation (ft) 1409' GL Type of Well New Existing Type of Report Interim Final
Permit Type Deviated Horizontal Horizontal 6A Vertical Depth Type Deep Shallow
Type of Operation Convert Deepen Drill Plug Back Redrilling Rework Stimulate
Well Type Brine Disposal CBM Gas Oil Secondary Recovery Solution Mining Storage Other _____
Type of Completion Single Multiple Fluids Produced Brine Gas NGL Oil Other _____
Drilled with Cable Rotary

Drilling Media Surface hole Air Mud Fresh Water Intermediate hole Air Mud Fresh Water Brine
Production hole Air Mud Fresh Water Brine

Mud Type(s) and Additive(s)
Air- Foam & 4% KCL
Mud- Polymer

Date permit issued 3/19/2014 Date drilling commenced 5/14/2014 Date drilling ceased 9/26/2014
Date completion activities began 12/6/2014 Date completion activities ceased 3/11/2015
Verbal plugging (Y/N) N/A Date permission granted N/A Granted by N/A

Please note: Operator is required to submit a plugging application within 5 days of verbal permission to plug

Freshwater depth(s) ft 77', 112' Open mine(s) (Y/N) depths No
Salt water depth(s) ft None Identified Void(s) encountered (Y/N) depths No
Coal depth(s) ft None Identified Cavern(s) encountered (Y/N) depths No
Is coal being mined in area (Y/N) No

Received
Office of Oil & Gas
JAN 13 2016

Reviewed by: _____

02/05/2016

API 47-017 - 06469 Farm name Trent, Clarence, Jr., et al Well number Baker Unit 2H

CASING STRINGS	Hole Size	Casing Size	Depth	New or Used	Grade wt/ft	Basket Depth(s)	Did cement circulate (Y/N) * Provide details below*
Conductor	28"	20"	40'	New	133# J-55	N/A	Y*
Surface	17- 1/2"	13- 3/8"	362'	New	48# H-40	N/A	Y
Coal							
Intermediate 1	12-1/4"	9-5/8"	2518'	New	36# J-55	N/A	Y**
Intermediate 2							
Intermediate 3							
Production	8-3/4" & 8-1/2"	5-1/2"	17888'	New	23# P-110	N/A	Y
Tubing		2-3/8"	7364'		4.7# N-80	N/A	
Packer type and depth set		N/A					

Comment Details *Grout conductor with 120 sx of Class A Cement to bring returns to surface.

**DEP Inspector Doug Newlon notified on 6/22/2014 of no returns to surface on Intermediate Casing (986 sx). A grout job was performed with 177 sx of Class A cement successfully bringing returns to surface.

CEMENT DATA	Class/Type of Cement	Number of Sacks	Slurry wt (ppg)	Yield (ft ³ /sks)	Volume (ft ³)	Cement Top (MD)	WOC (hrs)
Conductor	Class A	270* sx	15.6	1.18	51	0'	8 Hrs.
Surface	Class A	433 sx	15.6	1.19	254	0'	8 Hrs.
Coal							
Intermediate 1	Class A	1163 sx**	15.6	1.18	789	0'	8 Hrs.
Intermediate 2							
Intermediate 3							
Production	Class H	1132 sx (Lead) 1639 sx (Tail)	14.5 Lead 15.2 Tail	1.30 Lead 1.86 Tail	3636	-500' into Intermediate Casing	8 Hrs.
Tubing							

Drillers TD (ft) 17888' MD, 7437' TVD (BHL), 7460' TVD (Deepest Point Drilled) Loggers TD (ft) 17888'
 Deepest formation penetrated Marcellus Plug back to (ft) N/A
 Plug back procedure N/A

Kick off depth (ft) 6723'

** This is a subsequent well. Antero only runs wireline logs on one well on a multi-well pad (Bowen Unit 2H API# 47-017-06167). Please reference the wireline logs submitted with Form WR-35 for the Bowen Unit 2H. A Cement Bond Log has been included with this submittal.

Check all wireline logs run caliper density deviated/directional induction neutron resistivity gamma ray temperature sonic

Well cored Yes No Conventional Sidewall Were cuttings collected Yes No

DESCRIBE THE CENTRALIZER PLACEMENT USED FOR EACH CASING STRING _____

Conductor- 0
 Surface- 1 above guide shoe, 1 above insert float, 1 every 4th joint to surface
 Intermediate- 1 above float joint, 1 above float collar, 1 every 4th joint to surface
 Production- 1 above float joint, 1 below float collar, 1 every 3rd joint to top of cement

WAS WELL COMPLETED AS SHOT HOLE Yes No DETAILS _____

Received
Office of Oil & Gas

WAS WELL COMPLETED OPEN HOLE? Yes No DETAILS _____

JAN 13 2016

WERE TRACERS USED Yes No TYPE OF TRACER(S) USED _____

API 47- 017 - 06469 Farm name Trent, Clarence, Jr., et al Well number Baker Unit 2H

PERFORATION RECORD

Stage No.	Perforation date	Perforated from MD ft.	Perforated to MD ft.	Number of Perforations	Formation(s)
		*PLEASE SEE EXHIBIT 1			

Please insert additional pages as applicable.

STIMULATION INFORMATION PER STAGE

Complete a separate record for each stimulation stage.

Stage No.	Stimulations Date	Ave Pump Rate (BPM)	Ave Treatment Pressure (PSI)	Max Breakdown Pressure (PSI)	ISIP (PSI)	Amount of Proppant (lbs)	Amount of Water (bbls)	Amount of Nitrogen/other (units)
		*PLEASE SEE EXHIBIT 2						

Please insert additional pages as applicable.

Received
Office of Oil & Gas
JAN 13 2016

02/05/2016

API 47- 017 - 06469 Farm name Trent, Clarence, Jr., et al Well number Baker Unit 2H

<u>PRODUCING FORMATION(S)</u>	<u>DEPTHS</u>		
Marcellus	7401' (TOP)	TVD	7963' (TOP) MD
_____	_____	_____	_____
_____	_____	_____	_____
_____	_____	_____	_____

Please insert additional pages as applicable.

GAS TEST Build up Drawdown Open Flow OIL TEST Flow Pump

SHUT-IN PRESSURE Surface 3950 psi Bottom Hole --- psi DURATION OF TEST --- hrs

OPEN FLOW Gas 12256 mcfpd Oil 6 bpd NGL --- bpd Water 4 bpd GAS MEASURED BY Estimated Orifice Pilot

LITHOLOGY/ FORMATION	TOP DEPTH IN FT NAME TVD	BOTTOM DEPTH IN FT TVD	TOP DEPTH IN FT MD	BOTTOM DEPTH IN FT MD	DESCRIBE ROCK TYPE AND RECORD QUANTITY AND TYPE OF FLUID (FRESHWATER, BRINE, OIL, GAS, H ₂ S, ETC)
	0		0		

***PLEASE SEE EXHIBIT 3**

Please insert additional pages as applicable.

Drilling Contractor Precision Drilling Company, LP
Address 2640 Reach Road City Williamsport State PA Zip 17701

Logging Company STRC
Address 1560 Good Hope Pike City Clarksburg State WV Zip 26301

Cementing Company Nabors Completion & Production Services, Co.
Address 1650 Hackers Creek City Jane Lew State WV Zip 26378

Stimulating Company US Well Services
Address 533 Industrial Park Drive City Jane Lew State WV Zip 26378

Please insert additional pages as applicable.

Completed by Kara Quackenbush Telephone 303-357-7233
Signature *[Signature]* Title Permitting Agent Date 1/4/2015

Received
Office of Oil & Gas

JAN 13 2016

API 47-017-06469 Farm Name Trent, Clarence, Jr., et al Well Number Baker Unit 2H

EXHIBIT 1

Stage No.	Perforation Date	Perforated from MD ft.	Perforated to MD ft.	Number of Perforations	Formations
1	6-Dec-14	17,625	17,794	60	Marcellus
2	15-Dec-14	17,424	17,593	60	Marcellus
3	15-Dec-14	17,224	17,393	60	Marcellus
4	15-Dec-14	17,023	17,192	60	Marcellus
5	16-Dec-14	16,823	16,992	60	Marcellus
6	16-Dec-14	16,623	16,792	60	Marcellus
7	16-Dec-14	16,422	16,591	60	Marcellus
8	17-Dec-14	16,222	16,391	60	Marcellus
9	17-Dec-14	16,022	16,191	60	Marcellus
10	17-Dec-14	15,821	15,990	60	Marcellus
11	18-Dec-14	15,621	15,790	60	Marcellus
12	18-Dec-14	15,420	15,589	60	Marcellus
13	19-Dec-14	15,220	15,389	60	Marcellus
14	19-Dec-14	15,020	15,189	60	Marcellus
15	19-Dec-14	14,819	14,988	60	Marcellus
16	20-Dec-14	14,619	14,788	60	Marcellus
17	20-Dec-14	14,419	14,587	60	Marcellus
18	20-Dec-14	14,218	14,387	60	Marcellus
19	21-Dec-14	14,018	14,187	60	Marcellus
20	21-Dec-14	13,817	13,986	60	Marcellus
21	22-Dec-14	13,617	13,786	60	Marcellus
22	22-Dec-14	13,417	13,586	60	Marcellus
23	23-Dec-14	13,216	13,385	60	Marcellus
24	26-Dec-14	13,016	13,185	60	Marcellus
25	26-Dec-14	12,815	12,984	60	Marcellus
26	27-Dec-14	12,615	12,784	60	Marcellus
27	27-Dec-14	12,415	12,584	60	Marcellus
28	27-Dec-14	12,214	12,383	60	Marcellus
29	27-Dec-14	12,014	12,183	60	Marcellus
30	28-Dec-14	11,814	11,983	60	Marcellus
31	28-Dec-14	11,613	11,782	60	Marcellus
32	28-Dec-14	11,413	11,582	60	Marcellus
33	29-Dec-14	11,212	11,381	60	Marcellus
34	29-Dec-14	11,012	11,181	60	Marcellus
35	29-Dec-14	10,812	10,981	60	Marcellus
36	29-Dec-14	10,611	10,780	60	Marcellus
37	30-Dec-14	10,411	10,580	60	Marcellus
38	30-Dec-14	10,210	10,379	60	Marcellus
39	30-Dec-14	10,010	10,179	60	Marcellus
40	31-Dec-14	9,810	9,979	60	Marcellus
41	31-Dec-14	9,609	9,778	60	Marcellus
42	31-Dec-14	9,409	9,578	60	Marcellus
43	1-Jan-15	9,209	9,378	60	Marcellus
44	1-Jan-15	9,008	9,177	60	Marcellus
45	1-Jan-15	8,808	8,977	60	Marcellus
46	2-Jan-15	8,607	8,776	60	Marcellus
47	2-Jan-15	8,407	8,576	60	Marcellus
48	2-Jan-15	8,207	8,376	60	Marcellus
49	2-Jan-15	8,006	8,175	60	Marcellus

Received
Office of Oil & Gas
JAN 13 2016

02/05/2016

EXHIBIT 2

Stage No.	Stimulations Date	Avg Pump Rate	Avg Treatment Pressure (PSI)	Max Breakdown Pressure (PSI)	ISIP (PSI)	Amount of Proppant (lbs)	Amount of Water (bbls)	Amount of Nitrogen/ other (units)
1	14-Dec-14	62.0	7,626	5,984	3,823	78,630	6,754	N/A
2	15-Dec-14	61.4	7,379	6,605	4,903	129,875	6,694	N/A
3	15-Dec-14	63.7	7,864	6,337	5,068	133,195	6,869	N/A
4	15-Dec-14	60.0	7,201	6,065	4,406	238,760	6,730	N/A
5	16-Dec-14	60.1	7,371	6,151	5,472	242,230	6,710	N/A
6	16-Dec-14	63.8	7,688	6,051	5,783	207,810	7,312	N/A
7	16-Dec-14	61.0	7,361	6,005	4,671	240,900	6,638	N/A
8	17-Dec-14	62.0	7,355	5,836	5,028	242,550	6,668	N/A
9	17-Dec-14	62.3	7,694	5,887	5,609	241,320	6,637	N/A
10	17-Dec-14	60.4	7,244	5,801	5,411	243,945	6,926	N/A
11	18-Dec-14	63.2	7,224	5,894	5,794	244,010	6,600	N/A
12	18-Dec-14	63.3	7,259	5,819	4,989	244,565	6,583	N/A
13	19-Dec-14	64.3	7,183	5,776	6,194	244,720	6,488	N/A
14	19-Dec-14	64.8	7,267	5,547	5,929	244,045	6,465	N/A
15	19-Dec-14	64.4	7,071	5,475	5,032	240,690	6,937	N/A
16	20-Dec-14	65.3	7,357	5,854	5,987	244,650	6,439	N/A
17	20-Dec-14	64.5	7,663	5,590	5,622	244,585	6,420	N/A
18	20-Dec-14	65.1	7,095	5,693	5,092	243,645	6,262	N/A
19	21-Dec-14	64.1	7,284	5,349	4,945	218,740	6,394	N/A
20	21-Dec-14	65.3	7,073	5,515	5,753	243,160	8,406	N/A
21	22-Dec-14	63.6	7,203	5,682	5,671	235,670	6,248	N/A
22	22-Dec-14	64.9	7,146	5,509	5,461	237,500	6,335	N/A
23	23-Dec-14	64.6	6,977	5,550	5,645	239,420	6,316	N/A
24	26-Dec-14	64.8	7,020	6,098	5,213	244,400	6,297	N/A
25	26-Dec-14	64.0	6,868	5,645	4,956	241,900	6,288	N/A
26	27-Dec-14	64.0	6,951	5,540	4,826	240,500	6,270	N/A
27	27-Dec-14	64.4	6,947	5,410	4,989	244,200	6,248	N/A
28	27-Dec-14	64.2	6,720	5,249	5,364	244,900	6,230	N/A
29	27-Dec-14	64.0	6,809	5,314	4,992	242,900	6,211	N/A
30	28-Dec-14	64.5	6,724	5,271	5,314	243,960	6,245	N/A
31	28-Dec-14	64.7	6,682	5,214	5,003	245,700	6,204	N/A
32	28-Dec-14	63.0	6,626	5,203	4,749	243,000	6,161	N/A
33	29-Dec-14	63.0	6,612	5,314	5,053	243,235	6,143	N/A
34	29-Dec-14	64.3	6,865	5,472	4,985	242,350	6,125	N/A
35	29-Dec-14	63.3	6,993	5,633	5,540	243,070	6,116	N/A
36	29-Dec-14	63.0	7,107	5,515	5,239	240,900	6,099	N/A
37	30-Dec-14	64.6	7,124	5,533	5,474	242,090	5,945	N/A
38	30-Dec-14	64.3	7,010	5,653	5,711	240,730	6,139	N/A
39	30-Dec-14	63.0	6,577	5,193	5,089	240,350	6,049	N/A
40	31-Dec-14	63.0	6,681	5,386	4,853	236,350	5,940	N/A
41	31-Dec-14	63.8	6,854	5,521	4,896	241,520	6,011	N/A
42	31-Dec-14	63.0	6,588	5,461	4,889	241,900	5,991	N/A
43	1-Jan-15	63.0	6,569	5,554	4,950	241,400	5,972	N/A
44	1-Jan-15	64.7	6,889	5,497	5,372	245,310	5,963	N/A
45	1-Jan-15	63.0	6,774	5,427	5,604	243,650	5,943	N/A
46	2-Jan-15	63.0	6,388	5,379	5,225	243,050	5,926	N/A
47	2-Jan-15	63.6	6,569	5,658	5,461	243,530	5,906	N/A
48	2-Jan-15	63.6	6,795	5,582	5,275	243,190	5,895	N/A
49	2-Jan-15	63.0	6,754	5,879	4,306	242,250	5,877	N/A
	AVG=	63.5	7,042	5,644	5,217	11,430,950	312,025	TOTAL

Received
Office of Oil & Gas
JAN 13 2016

02/05/2016

EXHIBIT 3

LITHOLOGY/ FORMATION	TOP DEPTH (TVD)	BOTTOM DEPTH (TVD)	TOP DEPTH (MD)	BOTTOM DEPTH (MD)
	From Surface	From Surface	From Surface	From Surface
Fresh Water	77'	N/A	77'	N/A
Fresh Water	112'	N/A	112'	N/A
Sandstone	0	77	0	77
Shale	est. 77	632	est. 77	632
Sandstone	est. 632	697	est. 632	697
Shale and Limestone	est. 697	877	est. 697	877
Sandstone	est. 877	907	est. 877	907
Shale	est. 907	1037	est. 907	1037
Sandstone and Coal	est. 1037	1087	est. 1037	1087
Shale	est. 1087	1237	est. 1087	1237
Sandstone	est. 1237	1267	est. 1237	1267
Shale	est. 1267	1767	est. 1267	1767
Sandstone	est. 1767	1897	est. 1767	1897
Shale	est. 1897	1957	est. 1897	1957
Sandstone and Coal	est. 1957	1987	est. 1957	1987
Shale	est. 1987	2077	est. 1987	2077
Sandstone	est. 2077	2147	est. 2077	2147
Shale	est. 2147	2395	est. 2147	2395
Big Lime	2395	2565	2395	2568
Big Injun	2565	2794	2568	2797
Gantz Sand	2794	2998	2797	3001
Fifty Foot Sandstone	2998	3181	3001	3184
Gordon	3181	3559	3184	3562
Fifth Sandstone	3559	3625	3562	3628
Bayard	3625	3809	3628	3812
Warren	3809	4131	3812	4134
Speechley	4131	4333	4134	4336
Baltown	4333	4893	4336	4896
Bradford	4893	5380	4896	5383
Benson	5380	5624	5383	5627
Alexander	5624	5867	5627	5870
Elk	5867	6418	5870	6421
Rhinestreet	6418	6934	6421	6958
Sycamore	6934	7104	6958	7232
Middlesex	7104	7254	7232	7574
Burkett	7254	7283	7574	7637
Tully	7283	7401	7637	7963
Marcellus	7401	NA	7963	NA

*Please note Antero determines formation tops based on mud logs that are only run on one well on a multi-well pad. The measured Depth (MD) data on subsequent wells may be slightly different due to the well's unique departure.

Received
Office of Oil & Gas

JAN 13 2016

02/05/2016

Hydraulic Fracturing Fluid Product Component Information Disclosure

Job Start Date:	12/14/2014
Job End Date:	1/2/2015
State:	West Virginia
County:	Doddridge
API Number:	47-017-06469-00-00
Operator Name:	Antero Resources Corporation
Well Name and Number:	Baker Unit 2H
Longitude:	-80.62910000
Latitude:	39.20941100
Datum:	NAD83
Federal/Tribal Well:	NO
True Vertical Depth:	7,460
Total Base Water Volume (gal):	14,219,962
Total Base Non Water Volume:	597,933



Hydraulic Fracturing Fluid Composition:

Trade Name	Supplier	Purpose	Ingredients	Chemical Abstract Service Number (CAS #)	Maximum Ingredient Concentration in Additive (% by mass)**	Maximum Ingredient Concentration in HF Fluid (% by mass)**	Comments
Water	Antero Resources	Base Fluid	Water	7732-18-5	100.00000	90.79793	
Sand	U.S. Well Services	Proppant	Crystalline Silica, quartz	14808-60-7	100.00000	8.75173	
HCL Acid (12.6%-18.0%)	U.S. Well Services	Bulk Acid	Water	7732-18-5	87.50000	0.16186	
			Hydrogen Chloride	7647-01-0	18.00000	0.03866	
LGC-15	U.S. Well Services	Gelling Agents	Guar Gum	9000-30-0	50.00000	0.06307	
			Petroleum Distillates	64742-47-8	60.00000	0.05974	
			Suspending agent (solid)	14808-60-7	3.00000	0.00965	
			Surfactant	68439-51-0	3.00000	0.00378	
WFRA-405	U.S. Well Services	Friction Reducer	Anionic Polyacrylamide	Proprietary	40.00000	0.02638	
			Water	7732-18-5	40.00000	0.02638	
			Petroleum Distillates	64742-47-8	40.00000	0.02124	
			Crystalline Salt	12125-02-9	5.00000	0.00330	
			Ethoxylated alcohol blend	Proprietary	5.00000	0.00330	
SI-1100	U.S. Well Services	Scale Inhibitor					

			Di Water	7732-18-5	80.00000	0.01006
			Ethylene Glycol	107-21-1	40.00000	0.00569
			Potassium salt of diethylene triamine penta (methylene phosphonic acid)	15827-60-8	10.00000	0.00170
			2-Phosphonobutane 1,2,4 tricarboxylic salt	37971-36-1	10.00000	0.00162
			hexamethylenediamine tetra (methylene phosphonic acid)	38820-59-6	10.00000	0.00157
			Copolymer of Maleic and Acrylic acid	26677-99-6	10.00000	0.00148
			bis (hexamethylene) tramine penta (methylene phosphonic acid) - phosphate acid	40623-75-4	10.00000	0.00145
			Acrylic polymer	52255-49-9	5.00000	0.00063
K-BAC 1020	U.S. Well Services	Anti-Bacterial Agent				
			2,2-dibromo-3-nitrilopropionamide	10222-01-2	20.00000	0.00420
			Deionized Water	7732-18-5	28.00000	0.00240
AP One	U.S. Well Services	Gel Breakers				
			Ammonium Persulfate	7727-54-0	100.00000	0.00186
AI-301	U.S. Well Services	Acid Corrosion Inhibitors				
			Diethylene Glycol	111-46-6	30.00000	0.00012
			Methenamine	100-97-0	20.00000	0.00010
			Polyethylene polyamine	68603-67-8	10.00000	0.00004
			Hydrogen Chloride	7647-01-0	10.00000	0.00004
			Coco amine	61791-14-8	5.00000	0.00002

Ingredients shown above are subject to 29 CFR 1910.1200(i) and appear on Material Safety Data Sheets (MSDS). Ingredients shown below are Non-MSDS.

* Total Water Volume sources may include fresh water, produced water, and/or recycled water
 ** Information is based on the maximum potential for concentration and thus the total may be over 100%

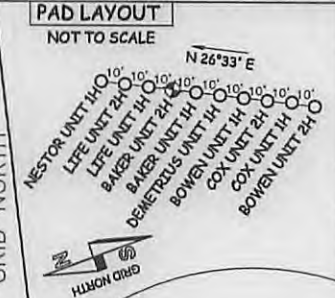
Note: For Field Development Products (products that begin with FDP), MSDS level only information has been provided. Ingredient information for chemicals subject to 29 CFR 1910.1200(i) and Appendix D are obtained from suppliers Material Safety Data Sheets (MSDS)

Received
 Office of Oil & Gas
 JAN 13 2016

LATITUDE 39°15'00" ← 1,213'

LONGITUDE 80°37'30" 5,335' TO BOTTOM HOLE 14,817'

- NOTE**
1. NO OCCUPIED DWELLINGS OR BUILDINGS TWO THOUSAND FIVE HUNDRED (2,500) SQUARE FEET OR LARGER USED TO HOUSE OR SHELTER DAIRY CATTLE OR POULTRY HUSBANDRY ARE LOCATED WITHIN SIX HUNDRED TWENTY-FIVE (625) FEET OF THE CENTER OF THE WELL PAD.
 2. TOP HOLE DATA SHOWN HEREIN WAS PROVIDED BY ALLEGHENY SURVEYS, INC.
 3. AS DRILLED DATA WAS PROVIDED BY ANTERO RESOURCES CORPORATION.
 4. WLS IS NOT CERTIFYING THE DATA AND INFORMATION PROVIDED LISTED IN NOTES 2 AND 3, ONLY THE RELATIONSHIP TO THE DATA AND INFORMATION PROVIDED TO THE LEASE BOUNDARIES.
 5. WLS IS BY NO MEANS RESPONSIBLE FOR ANY ERRORS OR INACCURACIES WITH THE DATA AND INFORMATION THAT HAS BEEN PROVIDED.
 6. THE INTERIOR BOUNDARY LINES OF THE DAVID E. GADDIS ET AL TRACTS (TM 6 PARCELS 13, 13.1 & 13.2) SHOWN HEREIN IN BOLD ARE BASED ON CURRENT DEEDS OF RECORD ONLY. THE SURFACE OWNER REFUSED ACCESS ONTO HIS PROPERTY TO OBTAIN THE NECESSARY INFORMATION TO VERIFY THE LOCATION OF THE BOUNDARY. THESE LINES ARE SHOWN FOR MAPPING PURPOSES ONLY.



JOB # 13-123WA
DRAWING # BAKER 2HAD
SCALE 1" = 1000'
MINIMUM DEGREE OF ACCURACY SUBMETER
PROVEN SOURCE OF ELEV. SUBMETER MAPPING GRADE GPS

STATE OF WEST VIRGINIA
DEPARTMENT OF ENERGY
DIVISION OF OIL AND GAS

- LEGEND**
- Surface Owner Boundary Lines +/-
 - - - Interior Surface Tracts +/-
 - X Existing Fence
 - ⊕ Found monument, as noted
 - Proposed Well Path
 - ⊗ As Drilled Well Path

DATE 04/01/15
OPERATOR'S WELL # BAKER UNIT #2H
API WELL # 47 - 017 - 06469
STATE COUNTY PERMIT



STATE OF WEST VIRGINIA, DIVISION OF ENVIRONMENTAL PROTECTION, OFFICE OF OIL AND GAS
WILLOW LAND SURVEYING PLLC
220 MASONIC AVE. PENNSBORO WEST VIRGINIA 26415

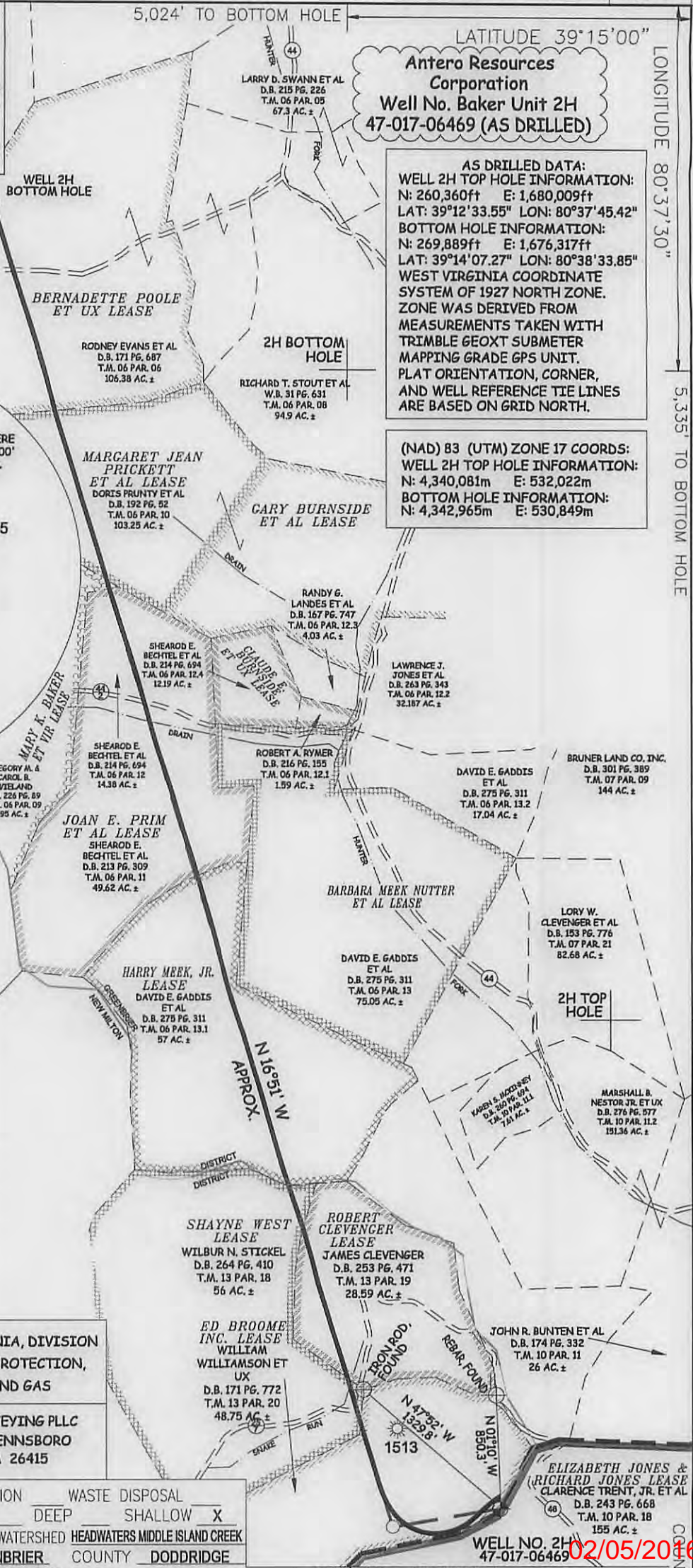
WELL TYPE: OIL GAS LIQUID INJECTION WASTE DISPOSAL
(IF "GAS") PRODUCTION STORAGE DEEP SHALLOW
LOCATION: ELEVATION 1,420' ORIGINAL -1,409' AS DRILLED WATERSHED HEADWATERS MIDDLE ISLAND CREEK
QUADRANGLE NEW MILTON 7.5' DISTRICT GREENBRIER COUNTY DODDRIDGE

SURFACE OWNER CLARENCE TRENT, JR. ET AL ACREAGE 155 ACRES +/-
OIL & GAS ROYALTY OWNER ELIZABETH JONES & RICHARD JONES; ED BROOME INC.; SHAYNE WEST; ROBERT CLEVINGER; HARRY MEEK, JR.; JOAN E. PRIM ET AL; MARY K. BAKER ET VIR; MARGARET J. PRICKETT ET AL; BERNADETTE POOLE ET UX
LEASE ACREAGE 155 AC±; 48.75 AC±; 56 AC±; 34.379 AC±; 57 AC±; 64 AC±; 95 AC±; 38.5 AC±; 106 AC±
PROPOSED WORK: DRILL CONVERT DRILL DEEPER REDRILL FRACTURE OR STIMULATE
PLUG OFF OLD FORMATION PERFORATE NEW FORMATION OTHER PHYSICAL CHANGE IN WELL (SPECIFY) (X) AS DRILLED PLUG & ABANDON CLEAN OUT & REPLUG
TARGET FORMATION MARCELLUS ESTIMATED DEPTH 7,437' TVD 17,888' MD
WELL OPERATOR ANTERO RESOURCES CORPORATION DESIGNATED AGENT DIANNA STAMPER
ADDRESS 1615 WYNKOOP STREET ADDRESS 5400 D BIG TYLER ROAD
FORM WW-6 DENVER, CO 80202 CHARLESTON, WV 25313

Antero Resources Corporation
Well No. Baker Unit 2H
47-017-06469 (AS DRILLED)

AS DRILLED DATA:
WELL 2H TOP HOLE INFORMATION:
N: 260,360ft E: 1,680,009ft
LAT: 39°12'33.55" LON: 80°37'45.42"
BOTTOM HOLE INFORMATION:
N: 269,889ft E: 1,676,317ft
LAT: 39°14'07.27" LON: 80°38'33.85"
WEST VIRGINIA COORDINATE SYSTEM OF 1927 NORTH ZONE. ZONE WAS DERIVED FROM MEASUREMENTS TAKEN WITH TRIMBLE GEOXT SUBMETER MAPPING GRADE GPS UNIT. PLAT ORIENTATION, CORNER, AND WELL REFERENCE TIE LINES ARE BASED ON GRID NORTH.

(NAD) 83 (UTM) ZONE 17 COORDS:
WELL 2H TOP HOLE INFORMATION:
N: 4,340,081m E: 532,022m
BOTTOM HOLE INFORMATION:
N: 4,342,965m E: 530,849m



WELL NO. 2H 47-017-06469 02/05/2016

LATITUDE 39°15'00" | 1,213'

LATITUDE 39°15'00"

LONGITUDE 80°37'30"

5,335' TO BOTTOM HOLE

14,817'

LONGITUDE 80°37'30"

COUNTY NAME

PERMIT

- NO OCCUPIED DWELLINGS OR BUILDINGS TWO THOUSAND FIVE HUNDRED (2,500) SQUARE FEET OR LARGER USED TO HOUSE OR SHELTER DAIRY CATTLE OR POULTRY HUSBANDRY ARE LOCATED WITHIN SIX HUNDRED TWENTY-FIVE (625) FEET OF THE CENTER OF THE WELL PAD.
- TOP HOLE DATA SHOWN HEREON WAS PROVIDED BY ALLEGHENY SURVEYS, INC.
- AS DRILLED DATA WAS PROVIDED BY ANTERO RESOURCES CORPORATION.
- WALS IS NOT CERTIFYING THE DATA AND INFORMATION PROVIDED LISTED IN NOTES 2 AND 3, ONLY THE RELATIONSHIP TO THE DATA AND INFORMATION PROVIDED TO THE LEASE BOUANDRIES.
- WALS IS BY NO MEANS RESPONSIBLE FOR ANY ERRORS OR INACCURACIES WITH THE DATA AND INFORMATION THAT HAS BEEN PROVIDED.
- THE INTERIOR BOUNDARY LINES OF THE DAVID E. GADDIS ET AL TRACTS (TM 6 PARCELS 13, 13.1 & 13.2) SHOWN HEREON IN BOLD ARE BASED ON CURRENT DEEDS OF RECORD ONLY. THE SURFACE OWNER REQUESTED ACCESS ONTO HIS PROPERTY TO OBTAIN THE NECESSARY INFORMATION TO VERIFY THE LOCATION OF THE BOUNDARY. THESE LINES ARE SHOWN FOR MAPPING PURPOSES ONLY.

PAD LAYOUT NOT TO SCALE

WELL 2H BOTTOM HOLE

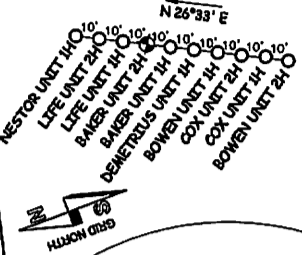
5,024' TO BOTTOM HOLE

Antero Resources Corporation
Well No. Baker Unit 2H
47-017-06469 (AS DRILLED)

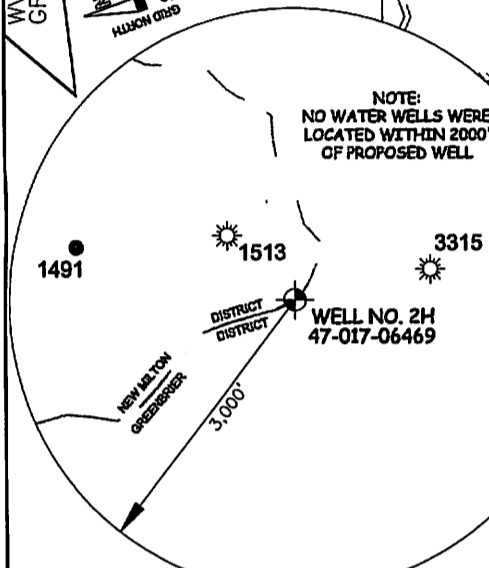
AS DRILLED DATA:
WELL 2H TOP HOLE INFORMATION:
 N: 260,360ft E: 1,680,009ft
 LAT: 39°12'33.55" LON: 80°37'45.42"
BOTTOM HOLE INFORMATION:
 N: 269,889ft E: 1,676,317ft
 LAT: 39°14'07.27" LON: 80°38'33.85"
WEST VIRGINIA COORDINATE SYSTEM OF 1927 NORTH ZONE. ZONE WAS DERIVED FROM MEASUREMENTS TAKEN WITH TRIMBLE GEOXT SUBMETER MAPPING GRADE GPS UNIT. PLAT ORIENTATION, CORNER, AND WELL REFERENCE TIE LINES ARE BASED ON GRID NORTH.

(NAD) 83 (UTM) ZONE 17 COORDS:
WELL 2H TOP HOLE INFORMATION:
 N: 4,340,081m E: 532,022m
BOTTOM HOLE INFORMATION:
 N: 4,342,965m E: 530,849m

WV NORTH ZONE GRID NORTH



NOTE:
 NO WATER WELLS WERE LOCATED WITHIN 2000' OF PROPOSED WELL



JOB # 13-123WA
 DRAWING # BAKER 2HAD
 SCALE 1" = 1000'
 MINIMUM DEGREE OF ACCURACY SUBMETER
 PROVEN SOURCE OF ELEV. SUBMETER MAPPING GRADE GPS

STATE OF WEST VIRGINIA
 DEPARTMENT OF ENERGY
 DIVISION OF OIL AND GAS

LEGEND

- Surface Owner Boundary Lines +/-
- Interior Surface Tracts +/-
- Existing Fence
- Found monument, as noted
- Proposed Well Path
- As Drilled Well Path

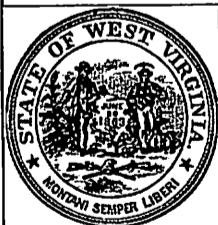
DATE 04/01/15

OPERATOR'S WELL# BAKER UNIT #2H

API WELL #

47 - 017 - 06469

STATE COUNTY PERMIT



STATE OF WEST VIRGINIA, DIVISION
 OF ENVIRONMENTAL PROTECTION,
 OFFICE OF OIL AND GAS

WILLOW LAND SURVEYING PLLC
 220 MASONIC AVE. PENNSBORO
 WEST VIRGINIA 26415

WELL TYPE: OIL GAS X LIQUID INJECTION WASTE DISPOSAL
 (IF "GAS") PRODUCTION X STORAGE DEEP SHALLOW X
 LOCATION: ELEVATION 1,420' ORIGINAL - 1,409' AS DRILLED WATERSHED HEADWATERS MIDDLE ISLAND CREEK
 QUADRANGLE NEW MILTON 7.5' DISTRICT GREENBRIER COUNTY DODDRIDGE

SURFACE OWNER CLARENCE TRENT, JR. ET AL ACREAGE 155 ACRES +/-

OIL & GAS ROYALTY OWNER ELIZABETH JONES & RICHARD JONES; ED BROOME INC.; SHAYNE WEST; ROBERT CLEVINGER; HARRY MEEK, JR.; JOAN E. PRIM ET AL; MARY K. BAKER ET VIR; MARGARET J. PRICKETT ET AL; BERVADETTE POOLE ET UX

LEASE ACREAGE 155 AC±; 48.75 AC±; 58 AC±; 34.379 AC±; 57 AC±; 64 AC±; 95 AC±; 38.5 AC±; 108 AC±

PROPOSED WORK: DRILL CONVERT DRILL DEEPER REDRILL FRACTURE OR STIMULATE

PLUG OFF OLD FORMATION PERFORATE NEW FORMATION OTHER PHYSICAL CHANGE IN WELL

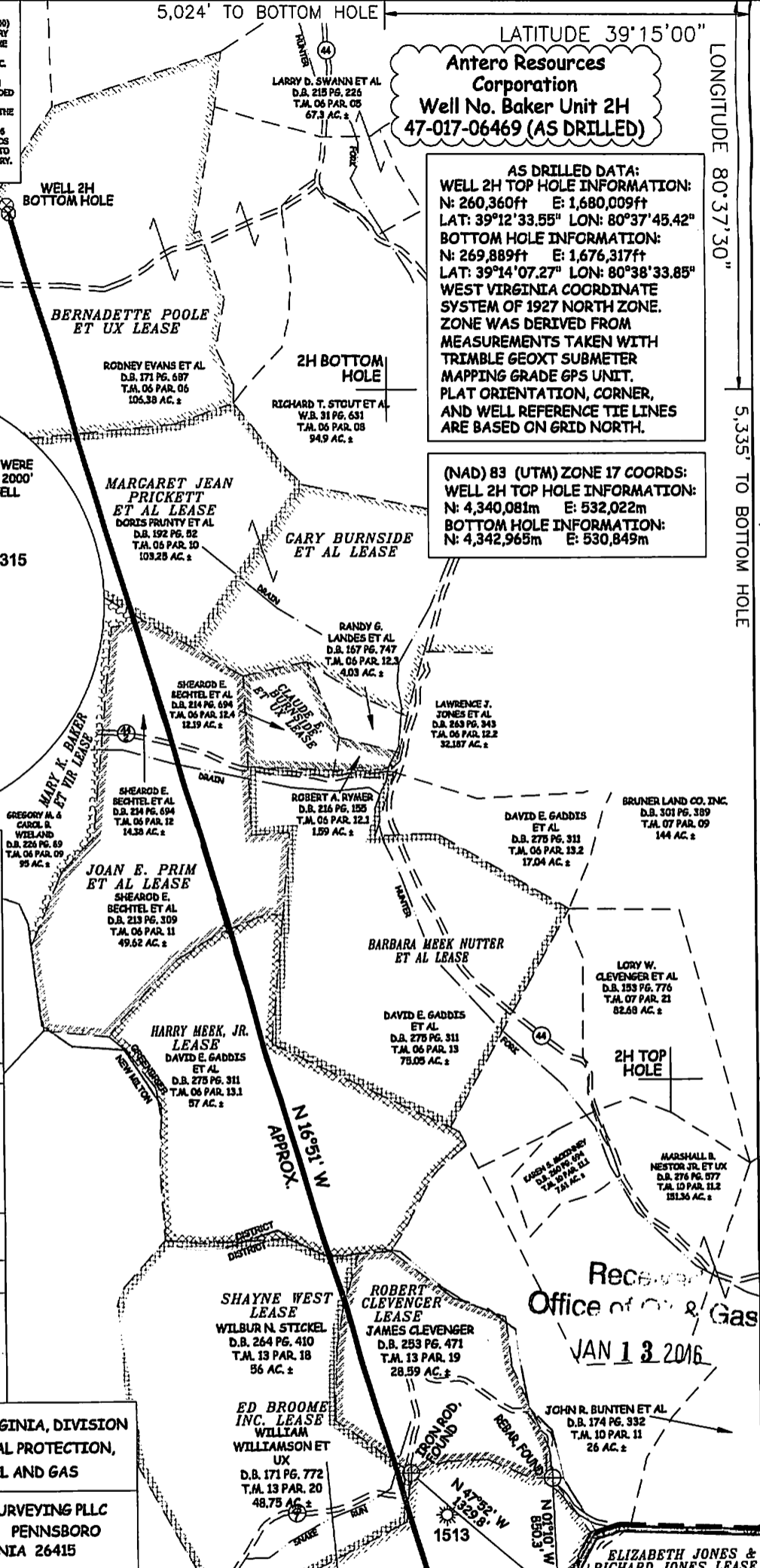
(SPECIFY) (X) AS DRILLED PLUG & ABANDON CLEAN OUT & REPLUG

TARGET FORMATION MARCELLUS ESTIMATED DEPTH 7,437' TVD 17,888' MD

WELL OPERATOR ANTERO RESOURCES CORPORATION DESIGNATED AGENT DIANNA STAMPER

ADDRESS 1615 WYNKOOP STREET ADDRESS 5400 D BIG TYLER ROAD

FORM WW-6 DENVER, CO 80202 CHARLESTON, WV 25313



Received
 Office of Oil & Gas
 JAN 13 2016

WELL NO. 2H
 47-017-06469 02/05/2016