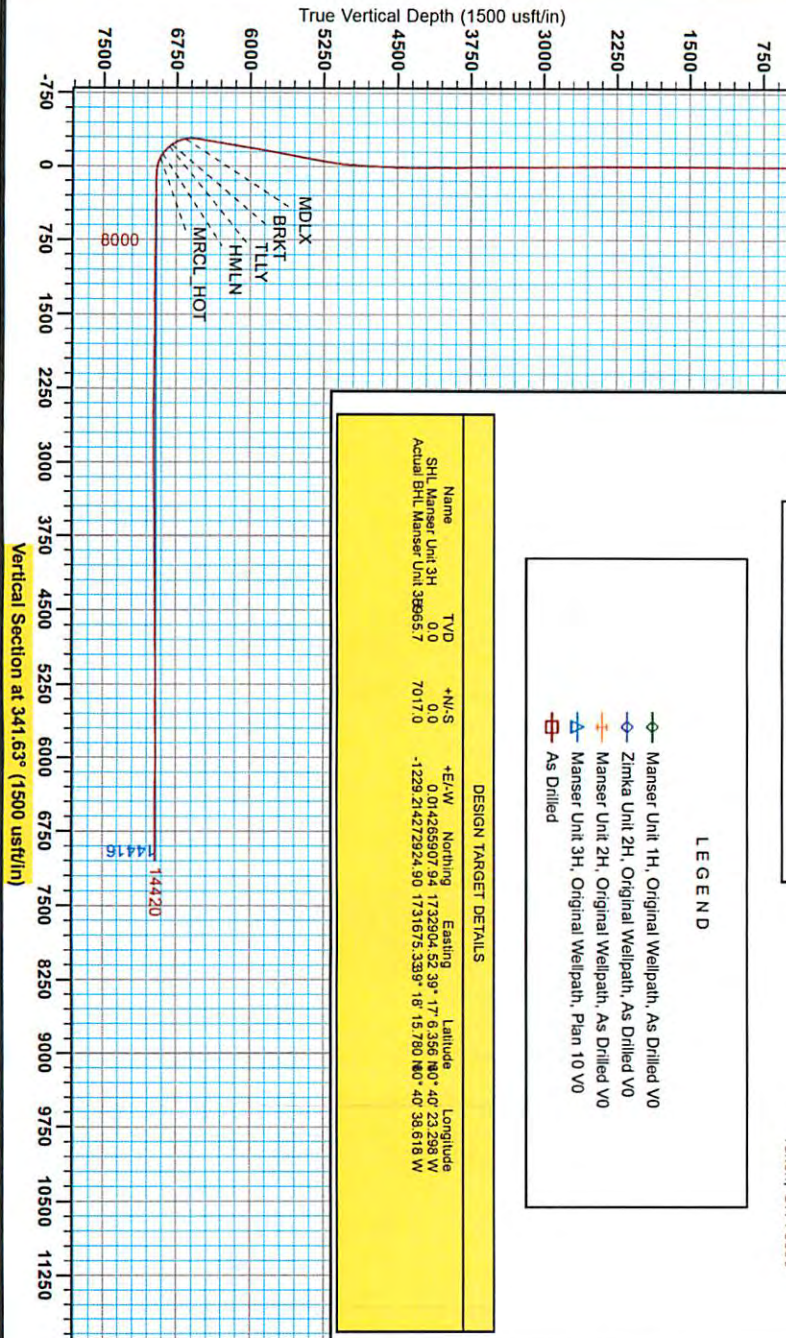




Antero Resources
 Manser Unit 3H
 Doddridge County WV
 Northing: 14265907.94
 Easting: 1732904.52
 As Drilled



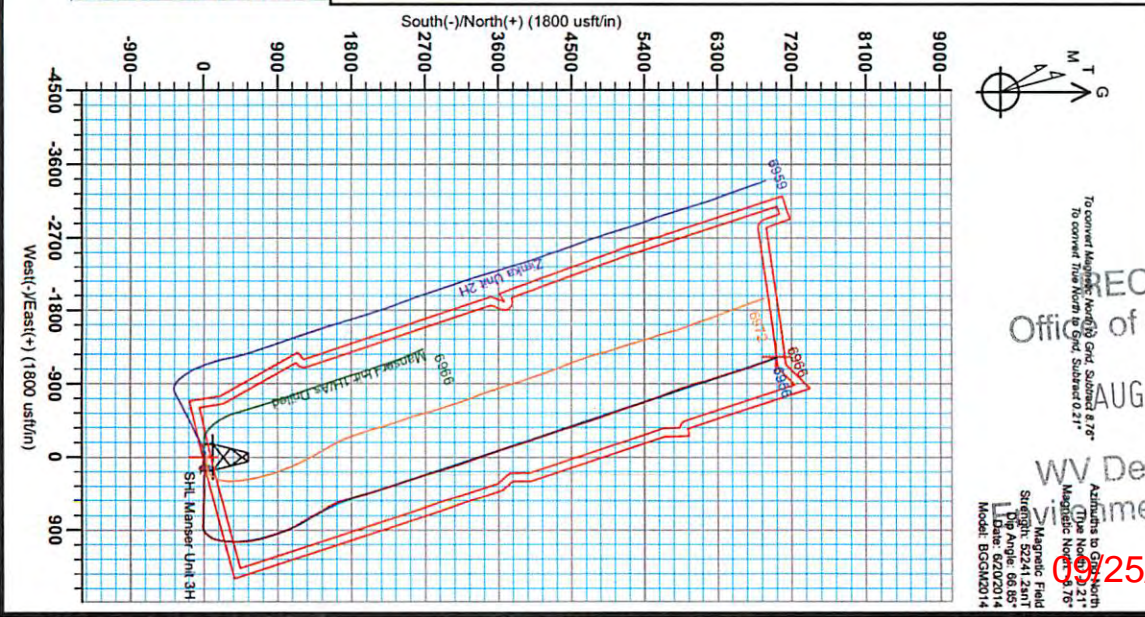
WELL DETAILS: Manser Unit 3H
 Ground Level: 1141.0
 Easting: 1732904.52
 Northing: 14265907.94
 Latitude: 39° 17' 6.356 N
 Longitude: 80° 40' 23.298 W
 SdK

REFERENCE INFORMATION
 Coordinate (N/S) Reference: Well Location Unit 3H Grid North
 Easting: 1732904.52
 Northing: 14265907.94
 Section (V/S) Reference: SdK - 10 DWS 0 02
 Section (V/S) Reference: SdK - 10 DWS 0 02
 Section (V/S) Reference: SdK - 10 DWS 0 02
 Section (V/S) Reference: SdK - 10 DWS 0 02
 Section (V/S) Reference: SdK - 10 DWS 0 02
 Section (V/S) Reference: SdK - 10 DWS 0 02

PROJECT DETAILS: Doddridge County WV
 Geoidetic System: Universal Transverse Mercator (US Survey Feet)
 Datum: NAD 1983 (NAD83 CONUS)
 Ellipsoid: Clarke 1866
 Zone: Zone 17N (84 W to 78 W)
 System Datum: Mean Sea Level

Genie Lightfoot
 16:30, December 10 2014
 Scientific Drilling
 11220 N.W. 10th Street
 Yukon, OK 73099

Scientific Drilling



RECEIVED
 Office of Oil and Gas
 AUG 03 2015
 WV Department of Environmental Protection
 AUG 25 2015

17-06487

17-06487



Antero Resources

Doddridge County WV
Zimka/Manser Pad
Manser Unit 3H
Original Wellpath

Design: As Drilled

EOW Completion Report

10 December, 2014



Scientific Drilling

RECEIVED
Office of Oil and Gas
AUG 03 2015
WV Department of
Environmental Protection

09/25/2015

17-06487



EOW Completion Report



Company:	Antero Resources	Local Co-ordinate Reference:	Well Manser Unit 3H
Project:	Doddridge County WV	TVD Reference:	Patterson 325: GL 1141' + 24' @ 1165.0usft
Site:	Zimka/Manser Pad	MD Reference:	Patterson 325: GL 1141' + 24' @ 1165.0usft
Well:	Manser Unit 3H	North Reference:	Grid
Wellbore:	Original Wellpath	Survey Calculation Method:	Minimum Curvature
Design:	As Drilled	Database:	Oklahoma District

Project	Doddridge County WV, McClellan District		
Map System:	Universal Transverse Mercator (US Survey Feet)	System Datum:	Mean Sea Level
Geo Datum:	NAD 1927 (NADCON CONUS)		
Map Zone:	Zone 17N (84 W to 78 W)		

Site	Zimka/Manser Pad				
Site Position:		Northing:	14,265,927.56 usft	Latitude:	39° 17' 6.551 N
From:	Map	Easting:	1,732,882.20 usft	Longitude:	80° 40' 23.581 W
Position Uncertainty:	2.0 usft	Slot Radius:	13-3/16"	Grid Convergence:	0.21 °

Well	Manser Unit 3H, Marcellus					
Well Position	+N-S	0.0 usft	Northing:	14,265,907.94 usft	Latitude:	39° 17' 6.356 N
	+E-W	0.0 usft	Easting:	1,732,904.52 usft	Longitude:	80° 40' 23.298 W
Position Uncertainty	2.0 usft		Wellhead Elevation:	1,165.0 usft	Ground Level:	1,141.0 usft

Wellbore	Original Wellpath				
Magnetics	Model Name	Sample Date	Declination (°)	Dip Angle (°)	Field Strength (nT)
	BGGM2014	6/20/2014	-8.55	66.85	52,241

Design	As Drilled				
Audit Notes:					
Version:	1.0	Phase:	ACTUAL	Tie On Depth:	0.0
Vertical Section:	Depth From (TVD) (usft)	+N-S (usft)	+E-W (usft)	Direction (°)	
	0.0	0.0	0.0	341.63	

Survey Program	Date	12/10/2014			
From (usft)	To (usft)	Survey (Wellbore)	Tool Name	Description	
36.0	6,599.1	Survey #7 Final Gyro (Original Wellpath)	SDI Standard Keeper	Scientific Drilling Intl. Standard Wireline Keeper	
6,694.0	14,420.0	Survey #8 SDI MWD (Original Wellpath)	MWD SDI	MWD - Standard ver 1.0.1	

Survey									
MD (usft)	Inc (°)	Azi (azimuth) (°)	TVD (usft)	N/S (usft)	E/W (usft)	V. Sec (usft)	DLeg (°/100usft)		
0.0	0.00	0.00	0.0	0.0	0.0	0.0	0.0	0.00	
36.0	0.26	263.05	36.0	0.0	-0.1	0.0	0.0	0.72	
61.0	0.53	263.05	61.0	0.0	-0.3	0.1	0.1	1.08	
86.0	0.79	263.05	86.0	-0.1	-0.5	0.1	0.1	1.04	
111.0	1.05	263.05	111.0	-0.1	-0.9	0.2	0.2	1.04	
136.0	0.98	256.86	136.0	-0.2	-1.4	0.3	0.3	0.52	
161.0	0.88	255.25	161.0	-0.3	-1.8	0.3	0.3	0.41	
186.0	0.92	258.28	186.0	-0.4	-2.1	0.3	0.3	0.25	
211.0	0.81	258.15	211.0	-0.5	-2.5	0.4	0.4	0.44	
236.0	0.56	256.68	236.0	-0.5	-2.8	0.4	0.4	1.00	
261.0	0.48	242.14	261.0	-0.6	-3.0	0.4	0.4	0.61	

RECEIVED
Office of Oil and Gas
AUG 03 2015
WV Department of Environmental Protection
COMPASS 5000.1 Build 70
09/25/2015

17-06487



EOW Completion Report



Company:	Antero Resources	Local Co-ordinate Reference:	Well Manser Unit 3H
Project:	Doddridge County WV	TVD Reference:	Patterson 325: GL 1141' + 24' @ 1165.0usft
Site:	Zimka/Manser Pad	MD Reference:	Patterson 325: GL 1141' + 24' @ 1165.0usft
Well:	Manser Unit 3H	North Reference:	Grid
Wellbore:	Original Wellpath	Survey Calculation Method:	Minimum Curvature
Design:	As Drilled	Database:	Oklahoma District

Survey

MD (usft)	Inc (°)	Azi (azimuth) (°)	TVD (usft)	N/S (usft)	E/W (usft)	V. Sec (usft)	DLeg (°/100usft)
286.0	0.49	245.65	286.0	-0.7	-3.2	0.4	0.13
311.0	0.54	243.88	311.0	-0.8	-3.4	0.3	0.21
336.0	0.33	248.33	336.0	-0.9	-3.6	0.3	0.85
361.0	0.30	238.00	361.0	-0.9	-3.7	0.3	0.26
386.0	0.25	236.38	386.0	-1.0	-3.8	0.3	0.20
411.0	0.28	217.89	411.0	-1.1	-3.9	0.2	0.36
436.0	0.24	243.19	436.0	-1.1	-4.0	0.2	0.48
461.0	0.28	234.55	461.0	-1.2	-4.1	0.1	0.22
486.0	0.34	230.51	486.0	-1.3	-4.2	0.1	0.26
511.0	0.36	227.16	511.0	-1.4	-4.3	0.0	0.11
536.0	0.27	227.67	536.0	-1.5	-4.4	0.0	0.36
561.0	0.27	223.82	561.0	-1.6	-4.5	-0.1	0.07
586.0	0.23	228.37	586.0	-1.6	-4.6	-0.1	0.18
611.0	0.38	235.39	611.0	-1.7	-4.7	-0.2	0.62
636.0	0.19	213.16	636.0	-1.8	-4.8	-0.2	0.87
661.0	0.13	229.45	661.0	-1.8	-4.8	-0.2	0.30
686.0	0.20	210.96	686.0	-1.9	-4.8	-0.3	0.35
711.0	0.21	207.76	711.0	-2.0	-4.9	-0.3	0.06
736.0	0.19	223.46	736.0	-2.1	-4.9	-0.4	0.23
761.0	0.20	217.94	761.0	-2.1	-5.0	-0.4	0.09
786.0	0.17	192.16	786.0	-2.2	-5.0	-0.5	0.35
811.0	0.19	227.28	811.0	-2.3	-5.1	-0.5	0.44
836.0	0.24	216.56	836.0	-2.3	-5.1	-0.6	0.26
861.0	0.19	225.27	861.0	-2.4	-5.2	-0.6	0.24
886.0	0.14	239.20	886.0	-2.4	-5.2	-0.7	0.26
911.0	0.12	248.51	911.0	-2.5	-5.3	-0.7	0.12
936.0	0.19	262.09	936.0	-2.5	-5.4	-0.7	0.31
961.0	0.08	323.64	961.0	-2.5	-5.4	-0.6	0.67
986.0	0.13	168.91	986.0	-2.5	-5.4	-0.7	0.82
1,011.0	0.08	203.79	1,011.0	-2.5	-5.4	-0.7	0.32
1,036.0	0.11	207.12	1,036.0	-2.6	-5.4	-0.7	0.12
1,061.0	0.13	246.83	1,061.0	-2.6	-5.5	-0.7	0.33
1,086.0	0.19	226.22	1,086.0	-2.6	-5.5	-0.8	0.33
1,111.0	0.14	237.94	1,111.0	-2.7	-5.6	-0.8	0.24
1,136.0	0.26	283.84	1,136.0	-2.7	-5.7	-0.8	0.76
1,161.0	0.25	246.79	1,161.0	-2.7	-5.8	-0.7	0.65
1,186.0	0.01	317.16	1,186.0	-2.7	-5.8	-0.7	0.99
1,211.0	0.12	227.66	1,211.0	-2.7	-5.8	-0.7	0.48
1,236.0	0.24	239.64	1,236.0	-2.8	-5.9	-0.8	0.50
1,261.0	0.30	252.31	1,261.0	-2.8	-6.0	-0.8	0.34
1,286.0	0.21	256.67	1,286.0	-2.9	-6.1	-0.8	0.37
1,311.0	0.24	248.96	1,311.0	-2.9	-6.2	-0.8	0.17
1,336.0	0.16	248.39	1,336.0	-2.9	-6.3	-0.8	0.32
1,361.0	0.27	255.73	1,361.0	-2.9	-6.4	-0.8	0.45

RECEIVED
Office of Oil and Gas
AUG 03 2015

17.06487



EOW Completion Report



Company:	Antero Resources	Local Co-ordinate Reference:	Well Manser Unit 3H
Project:	Doddridge County WV	TVD Reference:	Patterson 325: GL 1141' + 24' @ 1165.0usft
Site:	Zimka/Manser Pad	MD Reference:	Patterson 325: GL 1141' + 24' @ 1165.0usft
Well:	Manser Unit 3H	North Reference:	Grid
Wellbore:	Original Wellpath	Survey Calculation Method:	Minimum Curvature
Design:	As Drilled	Database:	Oklahoma District

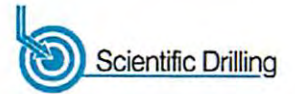
Survey									
MD (usft)	Inc (°)	Azi (azimuth) (°)	TVD (usft)	N/S (usft)	E/W (usft)	V. Sec (usft)	DLeg (°/100usft)		
1,386.0	0.16	241.14	1,386.0	-3.0	-6.5	-0.8	0.49		
1,411.0	0.10	231.25	1,411.0	-3.0	-6.5	-0.8	0.26		
1,436.0	0.20	225.47	1,436.0	-3.0	-6.6	-0.8	0.40		
1,461.0	0.18	199.17	1,461.0	-3.1	-6.6	-0.9	0.35		
1,486.0	0.27	211.78	1,486.0	-3.2	-6.7	-0.9	0.41		
1,511.0	0.32	226.62	1,511.0	-3.3	-6.7	-1.0	0.36		
1,536.0	0.33	214.04	1,536.0	-3.4	-6.8	-1.1	0.29		
1,561.0	0.23	207.11	1,561.0	-3.5	-6.9	-1.2	0.42		
1,586.0	0.29	217.31	1,586.0	-3.6	-7.0	-1.2	0.30		
1,611.0	0.28	206.59	1,611.0	-3.7	-7.0	-1.3	0.22		
1,636.0	0.30	209.29	1,636.0	-3.8	-7.1	-1.4	0.10		
1,661.0	0.34	183.04	1,661.0	-4.0	-7.1	-1.5	0.60		
1,686.0	0.26	184.54	1,686.0	-4.1	-7.1	-1.6	0.32		
1,711.0	0.23	143.13	1,711.0	-4.2	-7.1	-1.7	0.70		
1,736.0	0.27	139.23	1,736.0	-4.3	-7.0	-1.8	0.17		
1,761.0	0.27	127.69	1,761.0	-4.3	-6.9	-1.9	0.22		
1,786.0	0.28	121.83	1,786.0	-4.4	-6.8	-2.0	0.12		
1,811.0	0.34	103.24	1,811.0	-4.5	-6.7	-2.1	0.47		
1,836.0	0.29	113.77	1,836.0	-4.5	-6.6	-2.2	0.31		
1,861.0	0.40	108.28	1,861.0	-4.6	-6.5	-2.3	0.46		
1,886.0	0.25	94.52	1,886.0	-4.6	-6.3	-2.4	0.67		
1,911.0	0.33	93.82	1,911.0	-4.6	-6.2	-2.4	0.32		
1,936.0	0.29	92.59	1,936.0	-4.6	-6.1	-2.5	0.16		
1,961.0	0.10	101.88	1,961.0	-4.6	-6.0	-2.5	0.77		
1,986.0	0.09	239.15	1,986.0	-4.6	-6.0	-2.5	0.71		
2,011.0	0.06	206.89	2,011.0	-4.7	-6.0	-2.5	0.20		
2,036.0	0.15	272.01	2,036.0	-4.7	-6.0	-2.5	0.54		
2,061.0	0.10	293.33	2,061.0	-4.7	-6.1	-2.5	0.27		
2,086.0	0.22	290.96	2,086.0	-4.6	-6.1	-2.5	0.48		
2,111.0	0.38	290.71	2,111.0	-4.6	-6.3	-2.4	0.64		
2,136.0	0.18	309.98	2,136.0	-4.5	-6.4	-2.3	0.87		
2,161.0	0.32	291.07	2,161.0	-4.5	-6.5	-2.2	0.64		
2,186.0	0.21	275.68	2,186.0	-4.4	-6.6	-2.1	0.52		
2,211.0	0.24	276.34	2,211.0	-4.4	-6.7	-2.1	0.12		
2,236.0	0.33	288.48	2,236.0	-4.4	-6.8	-2.0	0.43		
2,261.0	0.49	274.72	2,261.0	-4.4	-7.0	-2.0	0.75		
2,286.0	0.33	294.17	2,286.0	-4.3	-7.1	-1.9	0.84		
2,311.0	0.40	284.03	2,311.0	-4.3	-7.3	-1.8	0.38		
2,336.0	0.32	290.17	2,336.0	-4.2	-7.4	-1.7	0.35		
2,361.0	0.31	277.26	2,361.0	-4.2	-7.6	-1.6	0.29		
2,386.0	0.38	285.56	2,386.0	-4.2	-7.7	-1.5	0.34		
2,411.0	0.42	299.21	2,411.0	-4.1	-7.9	-1.4	0.41		
2,436.0	0.45	293.10	2,436.0	-4.0	-8.1	-1.3	0.22		
2,461.0	0.40	283.96	2,461.0	-4.0	-8.2	-1.2	0.34		
2,486.0	0.31	279.94	2,486.0	-3.9	-8.4	-1.2	0.37		

RECEIVED
 Office of Oil and Gas
 AUG 03 2015
 WV Department of
 Environmental Protection

17.06487



EOW Completion Report



Company:	Antero Resources	Local Co-ordinate Reference:	Well Manser Unit 3H
Project:	Doddridge County WV	TVD Reference:	Patterson 325: GL 1141' + 24' @ 1165.0usft
Site:	Zimka/Manser Pad	MD Reference:	Patterson 325: GL 1141' + 24' @ 1165.0usft
Well:	Manser Unit 3H	North Reference:	Grid
Wellbore:	Original Wellpath	Survey Calculation Method:	Minimum Curvature
Design:	As Drilled	Database:	Oklahoma District

Survey								
MD (usft)	Inc (°)	Azi (azimuth) (°)	TVD (usft)	N/S (usft)	EW (usft)	V. Sec (usft)	DLeg (°/100usft)	
2,511.0	0.28	279.00	2,511.0	-3.9	-8.5	-1.0	0.12	
2,536.0	0.25	284.26	2,536.0	-3.9	-8.6	-1.0	0.15	
2,561.0	0.42	279.75	2,561.0	-3.9	-8.8	-0.9	0.69	
2,586.0	0.45	284.65	2,586.0	-3.8	-8.9	-0.8	0.19	
2,611.0	0.43	289.10	2,611.0	-3.8	-9.1	-0.7	0.16	
2,636.0	0.38	284.67	2,636.0	-3.7	-9.3	-0.6	0.24	
2,661.0	0.40	292.56	2,661.0	-3.7	-9.5	-0.5	0.23	
2,686.0	0.38	292.26	2,685.9	-3.6	-9.6	-0.4	0.08	
2,711.0	0.46	282.43	2,710.9	-3.5	-9.8	-0.3	0.43	
2,736.0	0.47	286.01	2,735.9	-3.5	-10.0	-0.2	0.12	
2,761.0	0.51	288.22	2,760.9	-3.4	-10.2	0.0	0.18	
2,786.0	0.53	287.52	2,785.9	-3.4	-10.4	0.1	0.08	
2,811.0	0.57	290.30	2,810.9	-3.3	-10.6	0.2	0.19	
2,836.0	0.54	291.81	2,835.9	-3.2	-10.9	0.4	0.13	
2,861.0	0.55	282.89	2,860.9	-3.1	-11.1	0.5	0.34	
2,886.0	0.59	290.21	2,885.9	-3.1	-11.3	0.7	0.33	
2,911.0	0.56	286.45	2,910.9	-3.0	-11.6	0.8	0.19	
2,936.0	0.62	291.89	2,935.9	-2.9	-11.8	1.0	0.33	
2,961.0	0.60	289.34	2,960.9	-2.8	-12.1	1.1	0.13	
2,986.0	0.58	284.93	2,985.9	-2.7	-12.3	1.3	0.20	
3,011.0	0.55	287.81	3,010.9	-2.6	-12.5	1.4	0.17	
3,036.0	0.64	286.15	3,035.9	-2.6	-12.8	1.6	0.37	
3,061.0	0.63	286.26	3,060.9	-2.5	-13.1	1.7	0.04	
3,086.0	0.63	285.63	3,085.9	-2.4	-13.3	1.9	0.03	
3,111.0	0.70	287.60	3,110.9	-2.3	-13.6	2.1	0.29	
3,136.0	0.70	289.31	3,135.9	-2.2	-13.9	2.3	0.08	
3,161.0	0.80	287.18	3,160.9	-2.1	-14.2	2.4	0.42	
3,186.0	0.70	284.68	3,185.9	-2.0	-14.5	2.6	0.42	
3,211.0	0.71	285.59	3,210.9	-2.0	-14.8	2.8	0.06	
3,236.0	0.75	280.20	3,235.9	-1.9	-15.1	3.0	0.32	
3,261.0	0.72	279.55	3,260.9	-1.8	-15.4	3.1	0.12	
3,286.0	0.70	276.05	3,285.9	-1.8	-15.7	3.3	0.19	
3,311.0	0.78	279.85	3,310.9	-1.8	-16.1	3.4	0.38	
3,336.0	0.80	280.80	3,335.9	-1.7	-16.4	3.6	0.10	
3,361.0	0.81	279.52	3,360.9	-1.6	-16.7	3.7	0.08	
3,386.0	0.85	276.87	3,385.9	-1.6	-17.1	3.9	0.22	
3,411.0	0.75	278.70	3,410.9	-1.5	-17.5	4.0	0.41	
3,436.0	0.87	282.12	3,435.9	-1.5	-17.8	4.2	0.52	
3,461.0	0.86	280.69	3,460.9	-1.4	-18.2	4.4	0.10	
3,486.0	0.84	280.35	3,485.9	-1.3	-18.5	4.6	0.08	
3,511.0	0.80	278.23	3,510.9	-1.3	-18.9	4.7	0.20	
3,536.0	0.80	277.98	3,535.9	-1.2	-19.2	4.9	0.01	
3,561.0	0.94	278.50	3,560.9	-1.2	-19.6	5.1	0.56	
3,586.0	0.82	279.65	3,585.9	-1.1	-20.0	5.3	0.49	

RECEIVED
Office of Oil and Gas
AUG 03 2015
WV Department of Environmental Protection

17-06487



EOW Completion Report



Company:	Antero Resources	Local Co-ordinate Reference:	Well Manser Unit 3H
Project:	Doddridge County WV	TVD Reference:	Patterson 325: GL 1141' + 24' @ 1165.0usft
Site:	Zimka/Manser Pad	MD Reference:	Patterson 325: GL 1141' + 24' @ 1165.0usft
Well:	Manser Unit 3H	North Reference:	Grid
Wellbore:	Original Wellpath	Survey Calculation Method:	Minimum Curvature
Design:	As Drilled	Database:	Oklahoma District

Survey									
MD (usft)	Inc (°)	Azi (azimuth) (°)	TVD (usft)	N/S (usft)	E/W (usft)	V. Sec (usft)	DLeg (°/100usft)		
3,611.0	0.91	281.68	3,610.9	-1.0	-20.4	5.4	0.38		
3,636.0	0.92	279.19	3,635.9	-1.0	-20.7	5.6	0.16		
3,661.0	0.92	285.16	3,660.9	-0.9	-21.1	5.8	0.38		
3,686.0	0.97	279.90	3,685.9	-0.8	-21.5	6.0	0.40		
3,711.0	0.84	284.29	3,710.9	-0.7	-21.9	6.2	0.59		
3,736.0	0.93	287.40	3,735.9	-0.6	-22.3	6.5	0.41		
3,761.0	0.88	289.90	3,760.9	-0.5	-22.7	6.7	0.25		
3,786.0	0.92	290.93	3,785.9	-0.3	-23.0	6.9	0.17		
3,811.0	0.94	290.44	3,810.9	-0.2	-23.4	7.2	0.09		
3,836.0	0.87	295.71	3,835.9	0.0	-23.8	7.5	0.43		
3,861.0	0.91	293.98	3,860.8	0.1	-24.1	7.7	0.19		
3,886.0	0.95	298.09	3,885.8	0.3	-24.5	8.0	0.31		
3,911.0	0.97	297.75	3,910.8	0.5	-24.9	8.3	0.08		
3,936.0	0.89	293.86	3,935.8	0.7	-25.2	8.6	0.41		
3,961.0	0.94	297.05	3,960.8	0.8	-25.6	8.9	0.29		
3,986.0	1.05	294.00	3,985.8	1.0	-26.0	9.2	0.49		
4,011.0	1.11	299.78	4,010.8	1.2	-26.4	9.5	0.50		
4,036.0	1.01	306.70	4,035.8	1.5	-26.8	9.9	0.65		
4,061.0	1.07	300.32	4,060.8	1.7	-27.2	10.2	0.52		
4,086.0	1.13	303.10	4,085.8	2.0	-27.6	10.6	0.32		
4,111.0	1.17	305.36	4,110.8	2.3	-28.0	11.0	0.24		
4,136.0	1.01	300.61	4,135.8	2.5	-28.4	11.4	0.73		
4,161.0	1.15	300.43	4,160.8	2.8	-28.8	11.7	0.56		
4,186.0	0.94	302.83	4,185.8	3.0	-29.2	12.1	0.86		
4,211.0	0.86	319.09	4,210.8	3.3	-29.5	12.4	1.07		
4,236.0	0.80	12.76	4,235.8	3.6	-29.6	12.7	3.01		
4,261.0	1.38	57.93	4,260.8	3.9	-29.3	12.9	3.98		
4,286.0	2.02	68.95	4,285.8	4.2	-28.6	13.0	2.86		
4,311.0	2.84	74.78	4,310.8	4.6	-27.6	13.0	3.42		
4,336.0	3.52	77.83	4,335.7	4.9	-26.3	12.9	2.80		
4,361.0	4.46	79.12	4,360.7	5.2	-24.5	12.7	3.78		
4,386.0	5.49	82.63	4,385.6	5.6	-22.4	12.3	4.29		
4,411.0	6.34	83.74	4,410.4	5.9	-19.8	11.8	3.43		
4,436.0	7.18	85.40	4,435.3	6.1	-16.9	11.2	3.45		
4,461.0	8.31	84.92	4,460.0	6.4	-13.6	10.4	4.53		
4,486.0	8.94	85.05	4,484.7	6.8	-9.8	9.5	2.52		
4,511.0	9.67	87.11	4,509.4	7.0	-5.8	8.5	3.21		
4,536.0	9.93	88.14	4,534.0	7.2	-1.5	7.3	1.25		
4,561.0	10.29	88.85	4,558.7	7.3	2.8	6.0	1.52		
4,586.0	10.55	88.55	4,583.2	7.4	7.4	4.7	1.06		
4,611.0	10.97	85.68	4,607.8	7.7	12.0	3.5	2.72		
4,636.0	11.29	84.43	4,632.3	8.1	16.8	2.4	1.60		
4,661.0	11.36	83.82	4,656.9	8.6	21.7	1.3	0.55		
4,686.0	11.43	84.42	4,681.4	9.1	26.6	0.2	0.55		

RECEIVED
 Office of Oil and Gas
 AUG 03 2015
 WV Department of Environmental Protection

17-06487



EOW Completion Report



Company:	Antero Resources	Local Co-ordinate Reference:	Well Manser Unit 3H
Project:	Doddridge County WV	TVD Reference:	Patterson 325: GL 1141' + 24' @ 1165.0usft
Site:	Zimka/Manser Pad	MD Reference:	Patterson 325: GL 1141' + 24' @ 1165.0usft
Well:	Manser Unit 3H	North Reference:	Grid
Wellbore:	Original Wellpath	Survey Calculation Method:	Minimum Curvature
Design:	As Drilled	Database:	Oklahoma District

MD (usft)	Inc (°)	Azi (azimuth) (°)	TVD (usft)	N/S (usft)	E/W (usft)	V. Sec (usft)	DLeg (°/100usft)
4,711.0	11.62	83.87	4,705.9	9.6	31.6	-0.9	0.88
4,736.0	12.09	85.62	4,730.3	10.1	36.7	-2.0	2.37
4,761.0	12.27	86.79	4,754.8	10.4	42.0	-3.3	1.22
4,786.0	12.53	87.90	4,779.2	10.7	47.3	-4.8	1.41
4,811.0	12.56	88.40	4,803.6	10.8	52.8	-6.3	0.45
4,836.0	12.97	90.95	4,828.0	10.9	58.3	-8.1	2.79
4,861.0	13.14	90.53	4,852.3	10.8	63.9	-9.9	0.78
4,886.0	13.65	89.33	4,876.6	10.8	69.7	-11.7	2.32
4,911.0	14.16	88.13	4,900.9	10.9	75.7	-13.5	2.34
4,936.0	14.78	86.46	4,925.1	11.2	82.0	-15.2	2.99
4,961.0	15.42	84.62	4,949.2	11.7	88.5	-16.7	3.20
4,986.0	16.02	84.58	4,973.3	12.4	95.2	-18.3	2.40
5,011.0	16.72	86.45	4,997.3	12.9	102.2	-20.0	3.50
5,036.0	17.36	88.54	5,021.2	13.2	109.5	-22.0	3.54
5,061.0	17.93	90.26	5,045.0	13.3	117.1	-24.3	3.09
5,086.0	18.64	91.86	5,068.8	13.2	125.0	-26.9	3.48
5,111.0	19.67	92.69	5,092.4	12.8	133.2	-29.8	4.26
5,136.0	20.42	92.46	5,115.9	12.5	141.7	-32.8	3.02
5,161.0	21.32	92.57	5,139.2	12.1	150.6	-36.0	3.60
5,186.0	22.47	92.74	5,162.4	11.6	159.9	-39.4	4.61
5,211.0	23.44	92.57	5,185.4	11.2	169.7	-42.9	3.89
5,236.0	24.33	92.99	5,208.3	10.7	179.8	-46.5	3.62
5,261.0	25.07	93.12	5,231.0	10.1	190.2	-50.3	2.97
5,286.0	26.02	93.26	5,253.6	9.5	201.0	-54.3	3.81
5,311.0	27.06	92.94	5,275.9	8.9	212.1	-58.4	4.20
5,336.0	27.96	92.27	5,298.1	8.4	223.7	-62.5	3.81
5,361.0	28.69	92.05	5,320.1	8.0	235.5	-66.7	2.95
5,386.0	29.19	91.97	5,342.0	7.5	247.6	-70.9	2.01
5,411.0	29.46	91.86	5,363.8	7.1	259.8	-75.1	1.10
5,436.0	29.60	91.02	5,385.5	6.8	272.2	-79.3	1.75
5,461.0	29.71	90.31	5,407.3	6.7	284.5	-83.3	1.47
5,486.0	29.51	89.27	5,429.0	6.7	296.9	-87.2	2.21
5,511.0	29.77	88.75	5,450.7	6.9	309.2	-90.9	1.46
5,536.0	29.86	88.80	5,472.4	7.2	321.7	-94.5	0.37
5,561.0	29.61	89.89	5,494.1	7.3	334.1	-98.3	2.38
5,586.0	29.57	90.31	5,515.9	7.3	346.4	-102.2	0.84
5,611.0	29.51	91.25	5,537.6	7.2	358.7	-106.3	1.87
5,636.0	29.56	92.20	5,559.4	6.8	371.1	-110.5	1.88
5,661.0	29.46	92.22	5,581.1	6.3	383.4	-114.8	0.40
5,686.0	29.45	91.33	5,602.9	5.9	395.7	-119.1	0.75
5,711.0	29.02	90.90	5,624.7	5.7	407.9	-123.1	1.91
5,736.0	29.03	90.68	5,646.6	5.5	420.0	-127.1	0.43
5,761.0	29.03	91.02	5,668.4	5.3	432.1	-131.1	0.665
5,786.0	28.79	92.49	5,690.3	5.0	444.2	-135.3	3.00

RECEIVED
Office of Oil and Gas
AUG 03 2015

17-06487



EOW Completion Report



Company:	Antero Resources	Local Co-ordinate Reference:	Well Manser Unit 3H
Project:	Doddridge County WV	TVD Reference:	Patterson 325: GL 1141' + 24' @ 1165.0usft
Site:	Zimka/Manser Pad	MD Reference:	Patterson 325: GL 1141' + 24' @ 1165.0usft
Well:	Manser Unit 3H	North Reference:	Grid
Wellbore:	Original Wellpath	Survey Calculation Method:	Minimum Curvature
Design:	As Drilled	Database:	Oklahoma District

Survey								
MD (usft)	Inc (°)	Azi (azimuth) (°)	TVD (usft)	N/S (usft)	E/W (usft)	V. Sec (usft)	DLeg (°/100usft)	
5,811.0	28.77	92.58	5,712.2	4.4	456.2	-139.6	0.19	
5,836.0	28.34	92.52	5,734.2	3.9	468.2	-143.8	1.72	
5,861.0	28.04	92.23	5,756.2	3.4	480.0	-148.0	1.32	
5,886.0	27.72	92.04	5,778.3	3.0	491.6	-152.1	1.33	
5,911.0	27.43	92.04	5,800.5	2.6	503.2	-156.1	1.16	
5,936.0	27.20	91.96	5,822.7	2.2	514.7	-160.1	0.93	
5,961.0	27.11	92.03	5,844.9	1.8	526.1	-164.1	0.38	
5,986.0	27.16	92.05	5,867.2	1.4	537.5	-168.1	0.20	
6,011.0	27.10	92.02	5,889.4	1.0	548.9	-172.1	0.25	
6,036.0	26.83	91.78	5,911.7	0.6	560.2	-176.0	1.16	
6,061.0	26.81	91.61	5,934.0	0.3	571.5	-179.9	0.32	
6,086.0	26.70	91.13	5,956.3	0.0	582.7	-183.7	0.97	
6,111.0	26.37	90.31	5,978.7	-0.2	593.9	-187.3	1.97	
6,136.0	26.30	89.82	6,001.1	-0.2	605.0	-190.8	0.91	
6,161.0	26.27	89.61	6,023.5	-0.1	616.0	-194.3	0.39	
6,186.0	26.23	90.74	6,046.0	-0.1	627.1	-197.8	2.01	
6,211.0	26.32	91.25	6,068.4	-0.3	638.2	-201.4	0.97	
6,236.0	26.41	90.92	6,090.8	-0.6	649.3	-205.1	0.69	
6,261.0	26.31	91.49	6,113.2	-0.8	660.4	-208.9	1.09	
6,286.0	26.24	92.94	6,135.6	-1.2	671.4	-212.8	2.58	
6,311.0	26.07	93.47	6,158.0	-1.8	682.4	-216.8	1.16	
6,336.0	25.83	93.14	6,180.5	-2.5	693.3	-220.8	1.12	
6,361.0	25.66	92.68	6,203.0	-3.0	704.2	-224.8	1.05	
6,386.0	25.92	92.68	6,225.5	-3.5	715.1	-228.7	1.04	
6,411.0	26.41	92.81	6,248.0	-4.0	726.1	-232.7	1.97	
6,436.0	26.43	92.48	6,270.4	-4.6	737.2	-236.7	0.59	
6,461.0	26.21	92.41	6,292.8	-5.0	748.3	-240.6	0.89	
6,486.0	26.06	92.34	6,315.2	-5.5	759.3	-244.5	0.61	
6,511.0	25.94	91.87	6,337.7	-5.9	770.2	-248.3	0.95	
6,536.0	25.81	91.61	6,360.2	-6.2	781.1	-252.1	0.69	
6,561.0	25.56	91.33	6,382.7	-6.5	791.9	-255.8	1.11	
6,586.0	25.88	91.39	6,405.2	-6.8	802.8	-259.4	1.28	
6,599.1	26.15	91.67	6,417.0	-6.9	808.5	-261.4	2.27	
6,694.0	25.88	91.10	6,502.3	-7.9	850.1	-275.4	0.39	
6,726.0	25.69	89.97	6,531.1	-8.0	864.1	-280.0	1.65	
6,757.0	25.46	83.08	6,559.1	-7.2	877.4	-283.4	9.62	
6,788.0	26.19	74.59	6,587.0	-4.6	890.6	-285.1	12.15	
6,820.0	27.49	64.77	6,615.6	0.4	904.1	-284.5	14.42	
6,851.0	29.20	57.05	6,642.8	7.6	916.9	-281.8	13.04	
6,873.0	30.44	52.35	6,661.9	13.9	925.9	-278.6	12.05	
MDLX								
6,882.0	30.99	50.53	6,669.7	16.8	929.4	-277.0	12.02	
6,914.0	33.94	45.32	6,696.7	28.3	942.2	-270.1	12.70	
6,945.0	37.42	42.51	6,721.9	41.3	954.7	-261.7	12.41	

RECEIVED
 Office of Oil and Gas
 AUG 03 2015
 WV Department of Environmental Protection

17-06487



EOW Completion Report



Company:	Antero Resources	Local Co-ordinate Reference:	Well Manser Unit 3H
Project:	Doddridge County WV	TVD Reference:	Patterson 325: GL 1141' + 24' @ 1165.0usft
Site:	Zimka/Manser Pad	MD Reference:	Patterson 325: GL 1141' + 24' @ 1165.0usft
Well:	Manser Unit 3H	North Reference:	Grid
Wellbore:	Original Wellpath	Survey Calculation Method:	Minimum Curvature
Design:	As Drilled	Database:	Oklahoma District

Survey								
MD (usft)	Inc (°)	Azi (azimuth) (°)	TVD (usft)	N/S (usft)	E/W (usft)	V. Sec (usft)	DLeg (°/100usft)	
6,977.0	40.88	39.30	6,746.7	56.6	967.9	-251.3	12.53	
7,008.0	43.94	35.38	6,769.6	73.2	980.6	-239.5	13.04	
7,039.0	45.14	29.94	6,791.7	91.5	992.3	-225.9	12.90	
7,051.0	45.62	28.10	6,800.1	99.0	996.4	-220.1	11.60	
BRKT								
7,071.0	46.48	25.11	6,814.0	111.9	1,002.9	-209.9	11.60	
7,089.0	47.91	21.74	6,826.2	124.0	1,008.1	-200.0	15.86	
TLLY								
7,102.0	49.01	19.41	6,834.8	133.1	1,011.5	-192.5	15.86	
7,133.0	51.28	15.21	6,854.7	155.8	1,018.6	-173.2	12.72	
7,165.0	54.20	11.99	6,874.1	180.5	1,024.6	-151.5	12.14	
7,196.0	58.37	9.01	6,891.3	205.9	1,029.2	-129.0	15.65	
7,200.0	58.91	8.80	6,893.4	209.3	1,029.8	-125.9	14.26	
HMLN								
7,227.0	62.57	7.43	6,906.6	232.6	1,033.1	-104.8	14.26	
7,253.0	65.83	6.80	6,917.9	255.8	1,036.0	-83.7	12.74	
MRCL_HOT								
7,258.0	66.46	6.68	6,919.9	260.3	1,036.5	-79.6	12.74	
7,290.0	71.38	4.37	6,931.4	290.1	1,039.4	-52.3	16.78	
7,321.0	75.66	2.50	6,940.2	319.7	1,041.2	-24.7	14.97	
7,353.0	79.78	2.01	6,947.0	351.0	1,042.4	4.6	12.96	
7,384.0	83.07	1.47	6,951.6	381.6	1,043.3	33.3	10.75	
7,415.0	86.44	359.94	6,954.4	412.5	1,043.7	62.5	11.93	
7,512.0	91.14	354.24	6,956.5	509.2	1,038.8	155.9	7.61	
7,607.0	88.86	351.87	6,956.5	603.5	1,027.3	249.0	3.46	
7,701.0	87.85	345.94	6,959.2	695.7	1,009.2	342.2	6.40	
7,795.0	89.76	340.62	6,961.2	785.7	982.2	436.1	6.01	
7,889.0	89.83	339.81	6,961.5	874.1	950.4	530.1	0.86	
7,984.0	89.87	340.09	6,961.7	963.4	917.8	625.0	0.30	
8,078.0	89.63	335.95	6,962.2	1,050.5	882.6	718.8	4.41	
8,172.0	87.98	330.63	6,964.1	1,134.4	840.4	811.8	5.92	
8,266.0	89.29	327.95	6,966.4	1,215.2	792.4	903.6	3.17	
8,360.0	90.27	331.22	6,966.7	1,296.3	744.8	995.5	3.63	
8,454.0	90.24	330.76	6,966.3	1,378.5	699.2	1,087.9	0.49	
8,548.0	88.22	328.43	6,967.6	1,459.5	651.7	1,179.8	3.28	
8,642.0	89.03	333.29	6,969.8	1,541.6	605.9	1,272.1	5.24	
8,736.0	91.11	338.82	6,969.7	1,627.4	567.8	1,365.6	6.29	
8,831.0	90.71	341.55	6,968.2	1,716.8	535.6	1,460.5	2.90	
8,925.0	88.92	342.83	6,968.5	1,806.3	506.9	1,554.5	2.34	
9,019.0	89.56	343.63	6,969.7	1,896.3	479.7	1,648.5	1.09	
9,113.0	89.16	343.85	6,970.8	1,986.5	453.4	1,742.4	0.49	
9,208.0	89.16	340.91	6,972.2	2,077.0	424.7	1,837.4	3.09	
9,302.0	90.34	343.14	6,972.6	2,166.4	395.7	1,931.4	2.68	
9,396.0	89.26	342.45	6,972.9	2,256.2	367.9	2,025.6	1.36	
9,490.0	88.72	342.32	6,974.6	2,345.8	339.4	2,119.3	0.59	

RECEIVED
 Office of Oil and Gas
 AUG 03 2015
 WV Department of Environmental Protection
 COMPASS 5000-1 Build 70
 09/25/2015

17-06487



EOW Completion Report



Company:	Antero Resources	Local Co-ordinate Reference:	Well Manser Unit 3H
Project:	Doddridge County WV	TVD Reference:	Patterson 325: GL 1141' + 24' @ 1165.0usft
Site:	Zimka/Manser Pad	MD Reference:	Patterson 325: GL 1141' + 24' @ 1165.0usft
Well:	Manser Unit 3H	North Reference:	Grid
Wellbore:	Original Wellpath	Survey Calculation Method:	Minimum Curvature
Design:	As Drilled	Database:	Oklahoma District

Survey									
MD (usft)	Inc (°)	Azi (azimuth) (°)	TVD (usft)	N/S (usft)	E/W (usft)	V. Sec (usft)	DLeg (°/100usft)		
9,584.0	89.50	341.88	6,976.0	2,435.3	310.5	2,213.3	0.95		
9,678.0	89.19	341.30	6,977.1	2,524.4	280.8	2,307.3	0.70		
9,772.0	88.86	340.96	6,978.7	2,613.4	250.5	2,401.3	0.50		
9,866.0	91.55	342.72	6,978.4	2,702.7	221.2	2,495.3	3.42		
9,960.0	90.24	344.45	6,976.9	2,792.8	194.6	2,589.2	2.31		
10,052.0	90.37	344.52	6,976.4	2,881.5	170.0	2,681.1	0.16		
10,143.0	88.72	340.41	6,977.1	2,968.2	142.6	2,772.0	4.87		
10,234.0	90.40	342.06	6,977.8	3,054.4	113.3	2,863.0	2.59		
10,325.0	90.47	341.13	6,977.2	3,140.7	84.6	2,954.0	1.02		
10,416.0	89.76	341.53	6,977.0	3,226.9	55.5	3,045.0	0.90		
10,506.0	91.24	341.39	6,976.2	3,312.3	26.8	3,135.0	1.65		
10,597.0	91.21	340.52	6,974.2	3,398.3	-2.9	3,226.0	0.96		
10,687.0	90.81	339.61	6,972.7	3,482.8	-33.5	3,315.9	1.10		
10,778.0	91.14	341.05	6,971.1	3,568.5	-64.2	3,406.9	1.62		
10,871.0	91.28	341.30	6,969.1	3,656.5	-94.2	3,499.9	0.31		
10,962.0	89.83	343.03	6,968.3	3,743.1	-122.0	3,590.9	2.48		
11,052.0	91.58	343.23	6,967.2	3,829.3	-148.1	3,680.8	1.96		
11,146.0	89.19	341.02	6,966.5	3,918.7	-177.0	3,774.8	3.46		
11,240.0	88.22	340.32	6,968.6	4,007.4	-208.1	3,868.8	1.27		
11,334.0	91.44	342.41	6,968.9	4,096.4	-238.1	3,962.7	4.08		
11,428.0	91.41	341.58	6,966.6	4,185.8	-267.2	4,056.7	0.88		
11,522.0	91.31	342.39	6,964.4	4,275.2	-296.2	4,150.7	0.87		
11,616.0	89.90	341.04	6,963.4	4,364.4	-325.7	4,244.7	2.08		
11,710.0	89.33	342.17	6,964.0	4,453.6	-355.4	4,338.7	1.35		
11,804.0	91.24	343.26	6,963.5	4,543.4	-383.3	4,432.6	2.34		
11,898.0	91.65	342.71	6,961.2	4,633.2	-410.8	4,526.6	0.73		
11,992.0	89.83	341.49	6,959.9	4,722.7	-439.7	4,620.6	2.33		
12,086.0	89.93	339.73	6,960.1	4,811.3	-470.9	4,714.5	1.88		
12,180.0	91.31	342.38	6,959.1	4,900.2	-501.4	4,808.5	3.18		
12,274.0	90.27	339.68	6,957.8	4,989.1	-532.0	4,902.5	3.08		
12,369.0	91.01	339.49	6,956.8	5,078.1	-565.1	4,997.4	0.80		
12,463.0	92.05	342.31	6,954.3	5,166.9	-595.9	5,091.4	3.20		
12,557.0	88.29	341.22	6,954.0	5,256.2	-625.3	5,185.4	4.16		
12,651.0	88.19	340.15	6,956.9	5,344.8	-656.3	5,279.3	1.14		
12,745.0	89.39	339.36	6,958.8	5,433.0	-688.9	5,373.2	1.53		
12,839.0	89.70	339.77	6,959.6	5,521.1	-721.7	5,467.2	0.55		
12,935.0	90.60	341.32	6,959.3	5,611.6	-753.6	5,562.1	1.87		
13,027.0	90.87	339.70	6,958.2	5,698.3	-784.3	5,655.1	1.79		
13,122.0	90.24	339.45	6,957.2	5,787.3	-817.5	5,750.1	2.77		
13,216.0	90.54	341.29	6,956.6	5,875.9	-849.1	5,844.0	1.98		
13,310.0	90.91	341.23	6,955.4	5,964.9	-879.3	5,938.0	2.40		
13,405.0	89.16	344.32	6,955.4	6,055.6	-907.4	6,033.0	3.74		
13,500.0	89.23	345.23	6,956.7	6,147.3	-932.3	6,127.0	0.96		
13,594.0	88.99	342.86	6,958.2	6,237.6	-958.2	6,221.7	2.53		

RECEIVED
Office of Oil and Gas
AUG 03 2014
WV Department of Environmental Protection

17-06487



EOW Completion Report



Company:	Antero Resources	Local Co-ordinate Reference:	Well Manser Unit 3H
Project:	Doddridge County WV	TVD Reference:	Patterson 325: GL 1141' + 24' @ 1165.0usft
Site:	Zimka/Manser Pad	MD Reference:	Patterson 325: GL 1141' + 24' @ 1165.0usft
Well:	Manser Unit 3H	North Reference:	Grid
Wellbore:	Original Wellpath	Survey Calculation Method:	Minimum Curvature
Design:	As Drilled	Database:	Oklahoma District

MD (usft)	Inc (°)	Azi (azimuth) (°)	TVD (usft)	N/S (usft)	EW (usft)	V. Sec (usft)	DLeg (°/100usft)
13,688.0	88.62	341.59	6,960.1	6,327.1	-986.9	6,315.7	1.41
13,782.0	90.07	343.42	6,961.2	6,416.7	-1,015.1	6,409.7	2.48
13,876.0	90.07	343.61	6,961.1	6,506.9	-1,041.8	6,503.6	0.20
13,970.0	90.50	343.76	6,960.6	6,597.1	-1,068.2	6,597.6	0.48
14,065.0	89.46	340.59	6,960.6	6,687.5	-1,097.3	6,692.5	3.51
14,159.0	88.99	339.46	6,961.9	6,775.9	-1,129.4	6,786.5	1.30
14,253.0	89.56	337.48	6,963.1	6,863.3	-1,163.9	6,880.3	2.19
14,347.0	88.92	336.58	6,964.3	6,949.8	-1,200.6	6,974.0	1.17
14,365.0	88.82	336.94	6,964.7	6,966.4	-1,207.7	6,992.0	2.08
14,420.0	89.00	336.94	6,965.7	7,017.0	-1,229.2	7,046.8	0.33

Measured Depth (usft)	Vertical Depth (usft)	Local Coordinates		Comment
		+N/-S (usft)	+E/-W (usft)	
6,873.0	6,661.9	13.9	925.9	MDLX
7,051.0	6,800.1	99.0	996.4	BRKT
7,089.0	6,826.2	124.0	1,008.1	TLLY
7,200.0	6,893.4	209.3	1,029.8	HMLN
7,253.0	6,917.9	255.8	1,036.0	MRCL_HOT

Checked By: _____ Approved By: _____ Date: _____

RECEIVED
Office of Oil and Gas
AUG 03 2015
WV Department of
Environmental Protection
COMPASS 5000.1 Build 70
09/25/2015