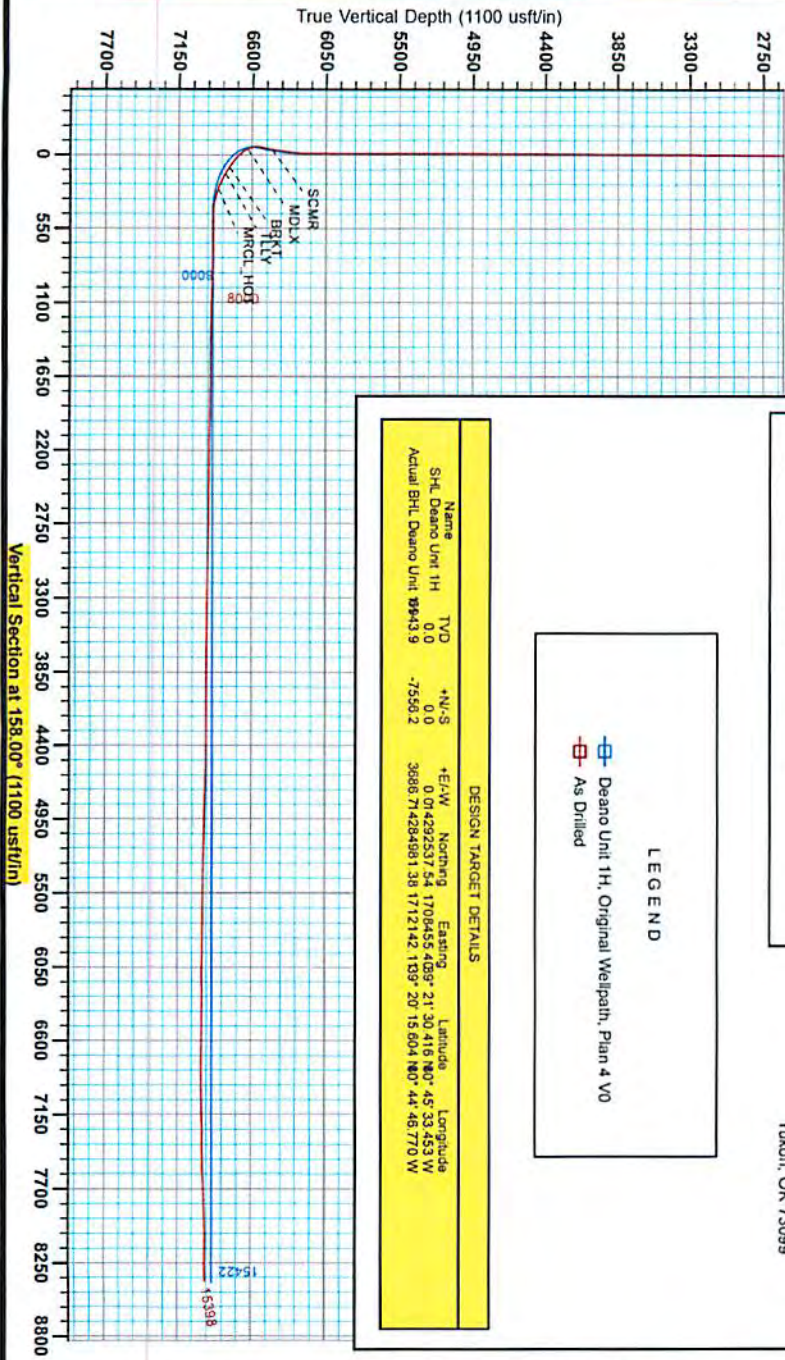


17.06497



Antero  
Deano Unit 1H  
Doddridge County WV  
Northing: 14292537.54  
Easting: 1708455.40  
As Drilled



**WELL DETAILS: Deano Unit 1H**

N/S - E/W	Northing	Easting	Ground Level	1135.0
0.0	0.0	14292537.54	1708455.40	
		37° 21' 30.818" N	80° 45' 33.453" W	SK4

**PROJECT DETAILS: Doddridge County WV**

Geologic System: Universal Transverse Mercator (US Survey Feet)  
Datum: NAD 1983 (NAD83 CONUS)  
Zone: Zone 17N (84W to 72 W)  
System Datum: Mean Sea Level

**REFERENCE INFORMATION**

Customer: Antero Resources, Inc. Deano Unit 1H, Original Wellpath, Plan 4 V0  
Antero Resources, Inc. 1100 N. 10th Street, Suite 1000  
Midwest City, Oklahoma 73101  
Antero Resources, Inc. 1100 N. 10th Street, Suite 1000  
Midwest City, Oklahoma 73101  
Customer Contact: Antero Resources, Inc.

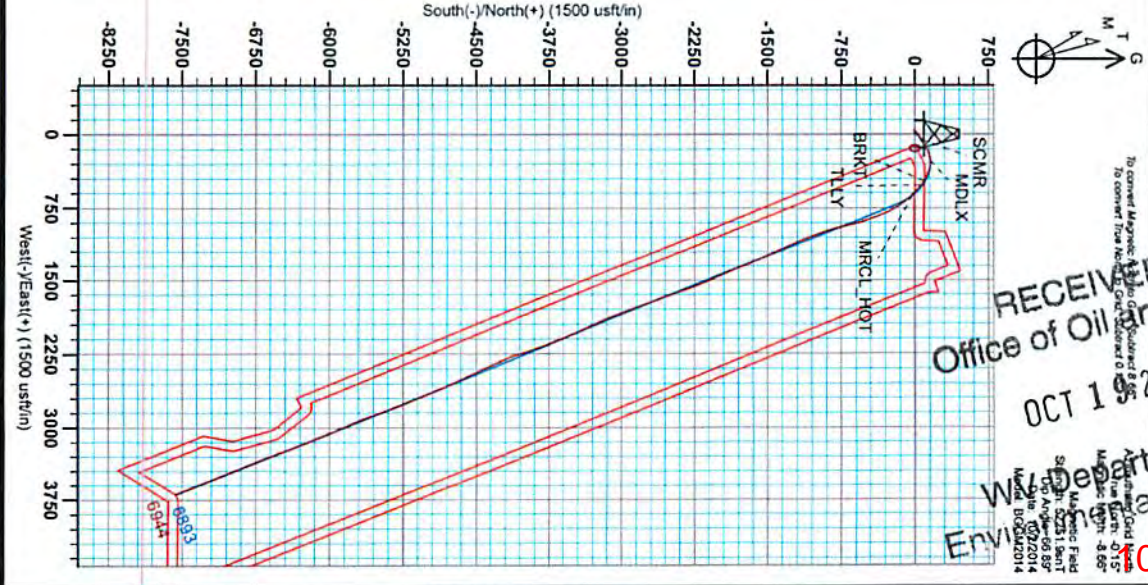
**LEGEND**

- Deano Unit 1H, Original Wellpath, Plan 4 V0
- As Drilled

**DESIGN TARGET DETAILS**

Name	TVD	+N/-S	+E/-W	Northing	Easting	Latitude	Longitude
Shl. Deano Unit 1H	0.0	0.0	0.0	14292537.54	1708455.40	37° 21' 30.818" N	80° 45' 33.453" W
Actual BHL Deano Unit 1H	9443.9	-7556.2	3686.7	14292537.54	1712142.18	37° 20' 15.604" N	80° 44' 45.770" W

Gene Lightfoot  
14:49, December 11 2014  
Scientific Drilling  
11220 N.W. 10th Street  
Yukon, OK 73099



RECEIVED  
Office of Oil and Gas  
OCT 19 2015  
Department of Environmental Protection  
10/30/2015

17-06497



# Antero

Doddridge County WV  
Melody Pad  
Deano Unit 1H  
Original Wellpath

Design: As Drilled

## EOW Completion Report

11 December, 2014



RECEIVED  
Office of Oil and Gas  
OCT 19 2015  
West Virginia Department of  
Environmental Protection

10/30/2015



17-06497

EOW Completion Report



<b>Company:</b>	Antero	<b>Local Co-ordinate Reference:</b>	Well Deano Unit 1H
<b>Project:</b>	Doddridge County WV	<b>TVD Reference:</b>	Precision 525: GL 1135" + KB 19' @ 1154.0usft
<b>Site:</b>	Melody Pad	<b>MD Reference:</b>	Precision 525: GL 1135" + KB 19' @ 1154.0usft
<b>Well:</b>	Deano Unit 1H	<b>North Reference:</b>	Grid
<b>Wellbore:</b>	Original Wellpath	<b>Survey Calculation Method:</b>	Minimum Curvature
<b>Design:</b>	As Drilled	<b>Database:</b>	Oklahoma District

<b>Project</b>	Doddridge County WV, McClellan District		
<b>Map System:</b>	Universal Transverse Mercator (US Survey Feet)	<b>System Datum:</b>	Mean Sea Level
<b>Geo Datum:</b>	NAD 1927 (NADCON CONUS)		
<b>Map Zone:</b>	Zone 17N (84 W to 78 W)		

<b>Site</b>	Melody Pad				
<b>Site Position:</b>		<b>Northing:</b>	14,292,537.54 usft	<b>Latitude:</b>	39° 21' 30.416 N
<b>From:</b>	Map	<b>Easting:</b>	1,708,455.40 usft	<b>Longitude:</b>	80° 45' 33.453 W
<b>Position Uncertainty:</b>	0.0 usft	<b>Slot Radius:</b>	13-3/16"	<b>Grid Convergence:</b>	0.15 °

<b>Well</b>	Deano Unit 1H, Marcellus					
<b>Well Position</b>	<b>+N/-S</b>	0.0 usft	<b>Northing:</b>	14,292,537.54 usft	<b>Latitude:</b>	39° 21' 30.416 N
	<b>+E/-W</b>	0.0 usft	<b>Easting:</b>	1,708,455.40 usft	<b>Longitude:</b>	80° 45' 33.453 W
<b>Position Uncertainty</b>		2.0 usft	<b>Wellhead Elevation:</b>	1,154.0 usft	<b>Ground Level:</b>	1,135.0 usft

<b>Wellbore</b>	Original Wellpath				
-----------------	-------------------	--	--	--	--

Magnetics	Model Name	Sample Date	Declination (°)	Dip Angle (°)	Field Strength (nT)
	EGGM2014	10/2/2014	-8.51	66.89	52,252

<b>Design</b>	As Drilled				
---------------	------------	--	--	--	--

<b>Audit Notes:</b>					
<b>Version:</b>	1.0	<b>Phase:</b>	ACTUAL	<b>Tie On Depth:</b>	0.0
<b>Vertical Section:</b>		<b>Depth From (TVD) (usft)</b>	<b>+N/-S (usft)</b>	<b>+E/-W (usft)</b>	<b>Direction (°)</b>
		0.0	0.0	0.0	158.00

<b>Survey Program</b>	Date 12/11/2014				
From (usft)	To (usft)	Survey (Wellbore)	Tool Name	Description	
106.0	5,927.0	Survey #1 Def Gyro to KOP (Original Well)	SDI Standard Keeper	Scientific Drilling Intl. Standard Wireline Keeper	
5,927.0	15,398.0	Survey #2 MWD (Original Wellpath)	SDI MWD	Scientific Drilling Intl. MWD - Standard ver 1.0.1	

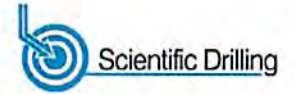
MD (usft)	Inc (°)	Azi (azimuth) (°)	TVD (usft)	N/S (usft)	E/W (usft)	V. Sec (usft)	DLeg (°/100usft)
0.0	0.00	0.00	0.0	0.0	0.0	0.0	0.00
106.0	0.72	264.20	106.0	-0.1	-0.7	0.0	0.68
131.0	0.78	263.78	131.0	-0.1	-1.0	-0.3	0.24
156.0	0.77	266.79	156.0	-0.1	-1.3	-0.5	0.17
181.0	0.56	270.51	181.0	-0.1	-1.6	-0.5	0.86
206.0	0.43	281.86	206.0	-0.1	-1.8	-0.6	0.65
231.0	0.26	270.00	231.0	-0.1	-2.0	-0.7	0.41
256.0	0.16	263.84	256.0	-0.1	-2.1	-0.7	0.25
281.0	0.18	243.64	281.0	-0.1	-2.1	-0.7	0.26
306.0	0.24	250.84	306.0	-0.2	-2.2	-0.7	0.26
331.0	0.14	238.64	331.0	-0.2	-2.3	-0.7	0.43

RECEIVED  
Office of Oil and Gas  
08/19/2015  
WV Department of  
Environmental Protection



17-06497

EOW Completion Report



<b>Company:</b>	Antero	<b>Local Co-ordinate Reference:</b>	Well Deano Unit 1H
<b>Project:</b>	Doddridge County WV	<b>TVD Reference:</b>	Precision 525: GL 1135" + KB 19' @ 1154.0usft
<b>Site:</b>	Melody Pad	<b>MD Reference:</b>	Precision 525: GL 1135" + KB 19' @ 1154.0usft
<b>Well:</b>	Deano Unit 1H	<b>North Reference:</b>	Grid
<b>Wellbore:</b>	Original Wellpath	<b>Survey Calculation Method:</b>	Minimum Curvature
<b>Design:</b>	As Drilled	<b>Database:</b>	Oklahoma District

Survey

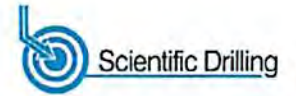
MD (usft)	Inc (°)	Azi (azimuth) (°)	TVD (usft)	N/S (usft)	E/W (usft)	V. Sec (usft)	DLeg (°/100usft)
356.0	0.23	228.54	356.0	-0.2	-2.4	-0.7	0.38
381.0	0.22	216.89	381.0	-0.3	-2.4	-0.6	0.19
406.0	0.14	213.39	406.0	-0.4	-2.5	-0.6	0.32
431.0	0.14	202.95	431.0	-0.4	-2.5	-0.5	0.10
456.0	0.23	210.43	456.0	-0.5	-2.5	-0.5	0.37
481.0	0.24	212.21	481.0	-0.6	-2.6	-0.4	0.05
506.0	0.18	217.49	506.0	-0.7	-2.6	-0.4	0.25
531.0	0.29	216.79	531.0	-0.7	-2.7	-0.3	0.44
556.0	0.31	224.15	556.0	-0.8	-2.8	-0.3	0.17
581.0	0.34	223.12	581.0	-0.9	-2.9	-0.2	0.12
606.0	0.36	223.63	606.0	-1.1	-3.0	-0.1	0.08
631.0	0.40	227.22	631.0	-1.2	-3.1	-0.1	0.19
656.0	0.37	233.99	656.0	-1.3	-3.2	0.0	0.22
681.0	0.42	238.59	681.0	-1.4	-3.4	0.0	0.24
706.0	0.42	246.61	706.0	-1.5	-3.5	0.0	0.23
731.0	0.41	237.58	731.0	-1.5	-3.7	0.0	0.26
756.0	0.39	249.87	756.0	-1.6	-3.9	0.1	0.35
781.0	0.43	245.28	781.0	-1.7	-4.0	0.1	0.21
806.0	0.41	248.85	806.0	-1.8	-4.2	0.1	0.13
831.0	0.43	241.63	831.0	-1.8	-4.4	0.1	0.23
856.0	0.37	246.10	856.0	-1.9	-4.5	0.1	0.27
881.0	0.40	254.73	881.0	-2.0	-4.7	0.1	0.26
906.0	0.25	264.61	906.0	-2.0	-4.8	0.1	0.64
931.0	0.27	274.36	931.0	-2.0	-4.9	0.0	0.19
956.0	0.17	298.06	956.0	-2.0	-5.0	0.0	0.53
981.0	0.25	254.65	981.0	-2.0	-5.1	-0.1	0.69
1,006.0	0.23	275.03	1,006.0	-2.0	-5.2	-0.1	0.35
1,031.0	0.20	263.86	1,031.0	-2.0	-5.3	-0.1	0.21
1,056.0	0.08	301.73	1,056.0	-2.0	-5.4	-0.2	0.58
1,081.0	0.28	232.33	1,081.0	-2.0	-5.4	-0.2	1.05
1,106.0	0.27	242.48	1,106.0	-2.1	-5.5	-0.1	0.20
1,131.0	0.30	244.43	1,131.0	-2.1	-5.6	-0.1	0.13
1,156.0	0.42	256.20	1,156.0	-2.2	-5.8	-0.1	0.56
1,181.0	0.41	262.79	1,181.0	-2.2	-6.0	-0.2	0.19
1,206.0	0.52	260.73	1,206.0	-2.2	-6.2	-0.2	0.44
1,231.0	0.54	261.39	1,231.0	-2.3	-6.4	-0.3	0.08
1,256.0	0.60	271.72	1,256.0	-2.3	-6.6	-0.4	0.48
1,281.0	0.63	273.22	1,281.0	-2.3	-6.9	-0.4	0.14
1,306.0	0.51	290.13	1,306.0	-2.2	-7.1	-0.6	0.82
1,331.0	0.56	284.04	1,331.0	-2.2	-7.4	-0.6	0.30
1,356.0	0.46	291.63	1,356.0	-2.1	-7.6	-0.9	0.48
1,381.0	0.44	280.20	1,381.0	-2.0	-7.8	-1.0	0.37
1,406.0	0.42	275.15	1,406.0	-2.0	-8.0	-1.1	0.17
1,431.0	0.43	276.45	1,431.0	-2.0	-8.1	-1.1	0.06

RECEIVED  
Office of Oil and Gas  
OCT 19 2015  
WV Department of  
Environmental Protection



17-06497

EOW Completion Report



<b>Company:</b>	Antero	<b>Local Co-ordinate Reference:</b>	Well Deano Unit 1H
<b>Project:</b>	Doddridge County WV	<b>TVD Reference:</b>	Precision 525: GL 1135" + KB 19' @ 1154.0usft
<b>Site:</b>	Melody Pad	<b>MD Reference:</b>	Precision 525: GL 1135" + KB 19' @ 1154.0usft
<b>Well:</b>	Deano Unit 1H	<b>North Reference:</b>	Grid
<b>Wellbore:</b>	Original Wellpath	<b>Survey Calculation Method:</b>	Minimum Curvature
<b>Design:</b>	As Drilled	<b>Database:</b>	Oklahoma District

Survey

MD (usft)	Inc (°)	Azi (azimuth) (°)	TVD (usft)	N/S (usft)	E/W (usft)	V. Sec (usft)	DLeg (°/100usft)
1,456.0	0.37	257.49	1,456.0	-2.0	-8.3	-1.3	0.58
1,481.0	0.36	260.32	1,481.0	-2.0	-8.5	-1.3	0.08
1,506.0	0.37	246.33	1,506.0	-2.1	-8.6	-1.3	0.36
1,531.0	0.33	243.21	1,531.0	-2.1	-8.8	-1.3	0.18
1,556.0	0.24	242.65	1,556.0	-2.2	-8.9	-1.3	0.36
1,581.0	0.15	226.77	1,581.0	-2.3	-8.9	-1.3	0.42
1,606.0	0.27	226.09	1,606.0	-2.3	-9.0	-1.2	0.48
1,631.0	0.25	218.81	1,631.0	-2.4	-9.1	-1.2	0.15
1,656.0	0.26	220.05	1,656.0	-2.5	-9.2	-1.1	0.05
1,681.0	0.25	208.74	1,681.0	-2.6	-9.2	-1.1	0.20
1,706.0	0.25	212.93	1,706.0	-2.7	-9.3	-1.0	0.07
1,731.0	0.20	217.66	1,731.0	-2.8	-9.3	-0.9	0.21
1,756.0	0.33	232.85	1,756.0	-2.8	-9.4	-0.9	0.59
1,781.0	0.23	220.89	1,781.0	-2.9	-9.5	-0.9	0.46
1,806.0	0.25	232.19	1,806.0	-3.0	-9.6	-0.8	0.21
1,831.0	0.22	246.47	1,831.0	-3.0	-9.7	-0.8	0.26
1,856.0	0.14	262.51	1,856.0	-3.1	-9.7	-0.8	0.38
1,881.0	0.21	289.62	1,881.0	-3.0	-9.8	-0.9	0.43
1,906.0	0.10	236.26	1,906.0	-3.0	-9.9	-0.9	0.68
1,931.0	0.16	292.26	1,931.0	-3.0	-9.9	-0.9	0.53
1,956.0	0.08	267.45	1,956.0	-3.0	-10.0	-0.9	0.37
1,981.0	0.15	263.82	1,981.0	-3.0	-10.0	-0.9	0.28
2,006.0	0.10	252.73	2,006.0	-3.0	-10.1	-1.0	0.22
2,031.0	0.07	326.05	2,031.0	-3.0	-10.1	-1.0	0.42
2,056.0	0.04	8.46	2,056.0	-3.0	-10.1	-1.0	0.19
2,081.0	0.06	327.42	2,081.0	-3.0	-10.1	-1.0	0.16
2,106.0	0.06	299.28	2,106.0	-3.0	-10.1	-1.0	0.12
2,131.0	0.02	219.84	2,131.0	-3.0	-10.2	-1.0	0.24
2,156.0	0.08	215.37	2,156.0	-3.0	-10.2	-1.0	0.24
2,181.0	0.03	173.41	2,181.0	-3.0	-10.2	-1.0	0.24
2,206.0	0.11	220.33	2,206.0	-3.0	-10.2	-1.0	0.37
2,231.0	0.15	217.86	2,231.0	-3.1	-10.2	-1.0	0.16
2,256.0	0.23	251.60	2,256.0	-3.1	-10.3	-1.0	0.54
2,281.0	0.23	254.67	2,281.0	-3.2	-10.4	-1.0	0.05
2,306.0	0.30	274.89	2,306.0	-3.2	-10.5	-1.0	0.46
2,331.0	0.30	287.75	2,331.0	-3.1	-10.6	-1.0	0.27
2,356.0	0.33	280.02	2,356.0	-3.1	-10.8	-1.2	0.21
2,381.0	0.30	312.27	2,381.0	-3.0	-10.9	-1.3	0.71
2,406.0	0.30	299.73	2,406.0	-3.0	-11.0	-1.4	0.26
2,431.0	0.31	295.49	2,431.0	-2.9	-11.1	-1.4	0.10
2,456.0	0.31	303.46	2,456.0	-2.8	-11.2	-1.6	0.17
2,481.0	0.28	284.63	2,481.0	-2.8	-11.3	-1.6	0.40
2,506.0	0.27	267.53	2,506.0	-2.8	-11.4	-1.6	0.33
2,531.0	0.25	276.52	2,531.0	-2.8	-11.6	-1.8	0.18
2,556.0	0.25	287.77	2,556.0	-2.7	-11.8	-1.8	0.20

RECEIVED  
Office of Oil and Gas  
OCT 19 2015  
WV Department of  
Environmental Protection



EOW Completion Report



<b>Company:</b> Antero	<b>Local Co-ordinate Reference:</b> Well Deano Unit 1H
<b>Project:</b> Doddridge County WV	<b>TVD Reference:</b> Precision 525: GL 1135" + KB 19' @ 1154.0usft
<b>Site:</b> Melody Pad	<b>MD Reference:</b> Precision 525: GL 1135" + KB 19' @ 1154.0usft
<b>Well:</b> Deano Unit 1H	<b>North Reference:</b> Grid
<b>Wellbore:</b> Original Wellpath	<b>Survey Calculation Method:</b> Minimum Curvature
<b>Design:</b> As Drilled	<b>Database:</b> Oklahoma District

Survey								
MD (usft)	Inc (°)	Azi (azimuth) (°)	TVD (usft)	N/S (usft)	E/W (usft)	V. Sec (usft)	DLeg (°/100usft)	
2,581.0	0.31	275.63	2,581.0	-2.7	-11.8	-1.9	0.34	
2,606.0	0.34	267.31	2,606.0	-2.7	-11.9	-1.9	0.22	
2,631.0	0.24	285.41	2,631.0	-2.7	-12.1	-2.0	0.54	
2,656.0	0.27	281.95	2,656.0	-2.7	-12.2	-2.1	0.13	
2,681.0	0.39	266.14	2,681.0	-2.7	-12.3	-2.1	0.60	
2,706.0	0.41	265.29	2,706.0	-2.7	-12.5	-2.2	0.08	
2,731.0	0.47	276.17	2,731.0	-2.7	-12.7	-2.3	0.41	
2,756.0	0.41	269.39	2,756.0	-2.7	-12.9	-2.3	0.32	
2,781.0	0.37	272.76	2,781.0	-2.7	-13.0	-2.4	0.18	
2,806.0	0.40	271.24	2,806.0	-2.7	-13.2	-2.5	0.13	
2,831.0	0.48	273.15	2,831.0	-2.7	-13.4	-2.5	0.33	
2,856.0	0.51	274.51	2,856.0	-2.6	-13.6	-2.6	0.13	
2,881.0	0.49	268.15	2,880.9	-2.6	-13.8	-2.7	0.24	
2,906.0	0.44	277.03	2,905.9	-2.6	-14.0	-2.8	0.35	
2,931.0	0.53	267.02	2,930.9	-2.6	-14.2	-2.9	0.49	
2,956.0	0.60	264.79	2,955.9	-2.6	-14.5	-3.0	0.29	
2,981.0	0.47	275.05	2,980.9	-2.7	-14.7	-3.1	0.64	
3,006.0	0.49	273.00	3,005.9	-2.6	-14.9	-3.1	0.11	
3,031.0	0.39	303.19	3,030.9	-2.6	-15.1	-3.3	0.99	
3,056.0	0.58	262.12	3,055.9	-2.6	-15.3	-3.4	1.54	
3,081.0	0.54	276.04	3,080.9	-2.6	-15.5	-3.5	0.57	
3,106.0	0.47	275.05	3,105.9	-2.5	-15.8	-3.6	0.28	
3,131.0	0.47	276.87	3,130.9	-2.5	-16.0	-3.6	0.06	
3,156.0	0.51	270.60	3,155.9	-2.5	-16.2	-3.7	0.27	
3,181.0	0.55	271.04	3,180.9	-2.5	-16.4	-3.8	0.16	
3,206.0	0.53	274.40	3,205.9	-2.5	-16.7	-3.9	0.15	
3,231.0	0.62	277.92	3,230.9	-2.5	-16.9	-4.0	0.39	
3,256.0	0.54	273.14	3,255.9	-2.4	-17.2	-4.2	0.37	
3,281.0	0.63	270.20	3,280.9	-2.4	-17.4	-4.3	0.38	
3,306.0	0.61	275.41	3,305.9	-2.4	-17.7	-4.4	0.24	
3,331.0	0.58	279.04	3,330.9	-2.4	-17.9	-4.5	0.19	
3,356.0	0.62	275.94	3,355.9	-2.3	-18.2	-4.6	0.21	
3,381.0	0.59	277.86	3,380.9	-2.3	-18.5	-4.8	0.14	
3,406.0	0.58	276.27	3,405.9	-2.3	-18.7	-4.9	0.08	
3,431.0	0.58	279.96	3,430.9	-2.3	-19.0	-5.0	0.15	
3,456.0	0.60	279.51	3,455.9	-2.2	-19.2	-5.2	0.08	
3,481.0	0.62	279.96	3,480.9	-2.2	-19.5	-5.3	0.08	
3,506.0	0.57	276.09	3,505.9	-2.1	-19.7	-5.4	0.26	
3,531.0	0.60	275.07	3,530.9	-2.1	-20.0	-5.5	0.13	
3,556.0	0.58	282.85	3,555.9	-2.1	-20.2	-5.7	0.33	
3,581.0	0.60	276.07	3,580.9	-2.0	-20.5	-5.8	0.29	
3,606.0	0.64	273.08	3,605.9	-2.0	-20.8	-5.9	0.17	
3,631.0	0.61	275.39	3,630.9	-2.0	-21.0	-6.1	0.16	
3,656.0	0.57	273.61	3,655.9	-2.0	-21.3	-6.2	0.18	

RECEIVED  
 Office of Oil and Gas  
 OCT 1 9 2015  
 WV Department of  
 Environmental Protection



17-06497

EOW Completion Report



<b>Company:</b>	Antero	<b>Local Co-ordinate Reference:</b>	Well Deano Unit 1H
<b>Project:</b>	Doddridge County WV	<b>TVD Reference:</b>	Precision 525: GL 1135" + KB 19' @ 1154.0usft
<b>Site:</b>	Melody Pad	<b>MD Reference:</b>	Precision 525: GL 1135" + KB 19' @ 1154.0usft
<b>Well:</b>	Deano Unit 1H	<b>North Reference:</b>	Grid
<b>Wellbore:</b>	Original Wellpath	<b>Survey Calculation Method:</b>	Minimum Curvature
<b>Design:</b>	As Drilled	<b>Database:</b>	Oklahoma District

Survey

MD (usft)	Inc (°)	Azi (azimuth) (°)	TVD (usft)	N/S (usft)	E/W (usft)	V. Sec (usft)	DLeg (°/100usft)
3,681.0	0.60	273.59	3,680.9	-1.9	-21.5	-6.3	0.12
3,706.0	0.63	274.93	3,705.9	-1.9	-21.8	-6.4	0.13
3,731.0	0.60	273.95	3,730.9	-1.9	-22.1	-6.5	0.13
3,756.0	0.55	270.31	3,755.9	-1.9	-22.3	-6.6	0.25
3,781.0	0.55	266.31	3,780.9	-1.9	-22.6	-6.7	0.15
3,806.0	0.56	270.36	3,805.9	-1.9	-22.8	-6.8	0.16
3,831.0	0.58	272.49	3,830.9	-1.9	-23.1	-6.9	0.12
3,856.0	0.63	272.22	3,855.9	-1.9	-23.3	-7.0	0.20
3,881.0	0.60	267.38	3,880.9	-1.9	-23.6	-7.1	0.24
3,906.0	0.55	265.00	3,905.9	-1.9	-23.8	-7.2	0.22
3,931.0	0.57	259.89	3,930.9	-1.9	-24.1	-7.2	0.22
3,956.0	0.60	270.95	3,955.9	-2.0	-24.3	-7.3	0.47
3,981.0	0.52	265.97	3,980.9	-2.0	-24.6	-7.4	0.37
4,006.0	0.60	267.20	4,005.9	-2.0	-24.8	-7.5	0.32
4,031.0	0.58	268.32	4,030.9	-2.0	-25.1	-7.6	0.09
4,056.0	0.58	263.81	4,055.9	-2.0	-25.3	-7.6	0.18
4,081.0	0.64	265.24	4,080.9	-2.0	-25.6	-7.7	0.25
4,106.0	0.58	268.04	4,105.9	-2.0	-25.9	-7.8	0.27
4,131.0	0.55	266.23	4,130.9	-2.1	-26.1	-7.9	0.14
4,156.0	0.58	267.80	4,155.9	-2.1	-26.4	-8.0	0.14
4,181.0	0.61	273.95	4,180.9	-2.1	-26.6	-8.1	0.28
4,206.0	0.61	265.03	4,205.9	-2.1	-26.9	-8.2	0.38
4,231.0	0.63	269.13	4,230.9	-2.1	-27.2	-8.2	0.19
4,256.0	0.52	270.68	4,255.9	-2.1	-27.4	-8.3	0.44
4,281.0	0.52	276.04	4,280.9	-2.1	-27.6	-8.5	0.19
4,306.0	0.60	266.74	4,305.9	-2.1	-27.9	-8.5	0.48
4,331.0	0.44	270.47	4,330.9	-2.1	-28.1	-8.6	0.65
4,356.0	0.42	270.10	4,355.9	-2.1	-28.3	-8.7	0.08
4,381.0	0.41	281.50	4,380.9	-2.1	-28.5	-8.8	0.38
4,406.0	0.48	278.45	4,405.9	-2.0	-28.7	-8.9	0.38
4,431.0	0.42	291.35	4,430.9	-2.0	-28.8	-9.0	0.47
4,456.0	0.58	281.05	4,455.9	-1.9	-29.1	-9.1	0.73
4,481.0	0.54	282.58	4,480.9	-1.9	-29.3	-9.2	0.17
4,506.0	0.61	280.20	4,505.9	-1.8	-29.5	-9.4	0.30
4,531.0	0.61	283.74	4,530.9	-1.8	-29.8	-9.5	0.15
4,556.0	0.59	275.03	4,555.9	-1.7	-30.1	-9.7	0.37
4,581.0	0.61	270.58	4,580.9	-1.7	-30.3	-9.8	0.20
4,606.0	0.65	264.07	4,605.9	-1.7	-30.6	-9.9	0.33
4,631.0	0.50	261.45	4,630.9	-1.7	-30.8	-9.9	0.61
4,656.0	0.51	256.81	4,655.9	-1.8	-31.1	-10.0	0.17
4,681.0	0.56	257.04	4,680.9	-1.8	-31.3	-10.0	0.20
4,706.0	0.54	256.73	4,705.9	-1.9	-31.5	-10.0	0.08
4,731.0	0.51	256.20	4,730.9	-2.0	-31.7	-10.1	0.12
4,756.0	0.54	248.14	4,755.9	-2.0	-32.0	-10.1	0.32

RECEIVED  
Office of Oil and Gas  
05/19/2015  
WV Department of  
Environmental Protection



17-06497

EOW Completion Report



<b>Company:</b>	Antero	<b>Local Co-ordinate Reference:</b>	Well Deano Unit 1H
<b>Project:</b>	Doddridge County WV	<b>TVD Reference:</b>	Precision 525: GL 1135" + KB 19' @ 1154.0usft
<b>Site:</b>	Melody Pad	<b>MD Reference:</b>	Precision 525: GL 1135" + KB 19' @ 1154.0usft
<b>Well:</b>	Deano Unit 1H	<b>North Reference:</b>	Grid
<b>Wellbore:</b>	Original Wellpath	<b>Survey Calculation Method:</b>	Minimum Curvature
<b>Design:</b>	As Drilled	<b>Database:</b>	Oklahoma District

Survey

MD (usft)	Inc (°)	Azi (azimuth) (°)	TVD (usft)	N/S (usft)	E/W (usft)	V. Sec (usft)	DLeg (°/100usft)
4,781.0	0.49	261.16	4,780.9	-2.1	-32.2	-10.1	0.51
4,806.0	0.55	250.78	4,805.9	-2.1	-32.4	-10.2	0.45
4,831.0	0.46	253.07	4,830.9	-2.2	-32.6	-10.2	0.37
4,856.0	0.44	248.04	4,855.9	-2.3	-32.8	-10.2	0.18
4,881.0	0.44	253.30	4,880.9	-2.3	-33.0	-10.2	0.16
4,906.0	0.48	241.78	4,905.9	-2.4	-33.2	-10.2	0.40
4,931.0	0.42	250.36	4,930.9	-2.5	-33.3	-10.2	0.36
4,956.0	0.44	241.24	4,955.9	-2.6	-33.5	-10.2	0.28
4,981.0	0.34	241.28	4,980.9	-2.7	-33.7	-10.1	0.40
5,006.0	0.41	237.93	5,005.9	-2.7	-33.8	-10.1	0.29
5,031.0	0.43	239.00	5,030.9	-2.8	-34.0	-10.1	0.09
5,056.0	0.32	246.32	5,055.9	-2.9	-34.1	-10.1	0.48
5,081.0	0.32	261.95	5,080.9	-2.9	-34.2	-10.1	0.35
5,106.0	0.33	255.12	5,105.8	-3.0	-34.4	-10.1	0.16
5,131.0	0.44	242.34	5,130.8	-3.0	-34.5	-10.1	0.56
5,156.0	0.38	246.67	5,155.8	-3.1	-34.7	-10.1	0.27
5,181.0	0.37	250.81	5,180.8	-3.2	-34.8	-10.1	0.12
5,206.0	0.46	246.78	5,205.8	-3.2	-35.0	-10.1	0.38
5,231.0	0.36	254.34	5,230.8	-3.3	-35.2	-10.1	0.45
5,256.0	0.36	249.10	5,255.8	-3.3	-35.3	-10.1	0.13
5,281.0	0.37	248.67	5,280.8	-3.4	-35.5	-10.1	0.04
5,306.0	0.42	241.89	5,305.8	-3.5	-35.6	-10.1	0.27
5,331.0	0.45	240.02	5,330.8	-3.6	-35.8	-10.1	0.13
5,356.0	0.39	241.50	5,355.8	-3.7	-36.0	-10.1	0.24
5,381.0	0.35	244.44	5,380.8	-3.7	-36.1	-10.1	0.18
5,406.0	0.42	240.65	5,405.8	-3.8	-36.2	-10.0	0.30
5,431.0	0.48	240.26	5,430.8	-3.9	-36.4	-10.0	0.24
5,456.0	0.44	242.05	5,455.8	-4.0	-36.6	-10.0	0.17
5,481.0	0.44	241.09	5,480.8	-4.1	-36.8	-10.0	0.03
5,506.0	0.58	238.92	5,505.8	-4.2	-37.0	-9.9	0.57
5,531.0	0.46	238.65	5,530.8	-4.3	-37.1	-9.9	0.33
5,556.0	0.53	243.13	5,555.8	-4.4	-37.3	-9.9	0.33
5,581.0	0.59	240.97	5,580.8	-4.5	-37.6	-9.9	0.25
5,606.0	0.48	240.62	5,605.8	-4.7	-37.8	-9.8	0.44
5,631.0	0.55	239.78	5,630.8	-4.8	-37.9	-9.8	0.28
5,656.0	0.53	230.80	5,655.8	-4.9	-38.1	-9.7	0.35
5,681.0	0.61	237.69	5,680.8	-5.0	-38.3	-9.7	0.42
5,706.0	0.58	228.55	5,705.8	-5.2	-38.6	-9.6	0.40
5,731.0	0.55	240.17	5,730.8	-5.3	-38.8	-9.6	0.47
5,756.0	0.65	236.56	5,755.8	-5.5	-39.0	-9.5	0.43
5,781.0	0.49	251.05	5,780.8	-5.6	-39.2	-9.5	0.86
5,806.0	0.54	256.54	5,805.8	-5.7	-39.4	-9.5	0.28
5,831.0	0.57	263.97	5,830.8	-5.7	-39.6	-9.6	0.31
5,856.0	0.41	244.07	5,855.8	-5.8	-39.9	-9.6	0.93

RECEIVED  
Office of Oil and Gas  
06/19/2015  
WV Department of  
Environmental Protection





17-06497

EOW Completion Report



<b>Company:</b>	Antero	<b>Local Co-ordinate Reference:</b>	Well Deano Unit 1H
<b>Project:</b>	Doddridge County WV	<b>TVD Reference:</b>	Precision 525: GL 1135" + KB 19' @ 1154.0usft
<b>Site:</b>	Melody Pad	<b>MD Reference:</b>	Precision 525: GL 1135" + KB 19' @ 1154.0usft
<b>Well:</b>	Deano Unit 1H	<b>North Reference:</b>	Grid
<b>Wellbore:</b>	Original Wellpath	<b>Survey Calculation Method:</b>	Minimum Curvature
<b>Design:</b>	As Drilled	<b>Database:</b>	Oklahoma District

Survey								
MD (usft)	Inc (°)	Azi (azimuth) (°)	TVD (usft)	N/S (usft)	E/W (usft)	V. Sec (usft)	DLeg (°/100usft)	
5,881.0	0.37	247.42	5,880.8	-5.8	-40.0	-9.6	0.18	
5,906.0	0.59	234.85	5,905.8	-5.9	-40.2	-9.6	0.97	
5,927.0	0.64	241.53	5,926.8	-6.0	-40.4	-9.5	0.42	
6,014.0	0.54	246.41	6,013.8	-6.4	-41.2	-9.5	0.13	
6,103.0	0.54	240.95	6,102.8	-6.8	-41.9	-9.4	0.06	
6,148.0	2.56	50.61	6,147.8	-6.3	-41.3	-9.7	6.87	
6,193.0	7.70	52.92	6,192.6	-3.8	-38.2	-10.8	11.43	
6,237.0	12.90	47.59	6,235.9	1.3	-32.2	-13.2	12.00	
6,282.0	17.90	47.90	6,279.3	9.3	-23.3	-17.4	11.11	
6,327.0	22.60	50.40	6,321.5	19.5	-11.5	-22.4	10.62	
6,372.0	27.30	51.42	6,362.2	31.4	3.2	-27.9	10.49	
6,417.0	32.57	53.55	6,401.2	45.1	21.0	-33.9	11.95	
6,462.0	37.43	57.41	6,438.1	59.6	42.3	-39.4	11.86	
6,486.0	40.68	57.72	6,456.7	67.7	55.1	-42.2	13.58	
<b>SCMR</b>								
6,507.0	43.53	57.96	6,472.3	75.2	67.0	-44.7	13.58	
6,552.0	48.89	57.65	6,503.4	92.5	94.5	-50.4	11.92	
6,596.0	54.66	58.86	6,530.6	110.7	123.9	-56.2	13.29	
6,641.0	56.22	64.81	6,556.2	128.2	156.5	-60.2	11.43	
6,686.0	55.79	72.63	6,581.4	141.7	191.2	-59.7	14.44	
6,731.0	55.99	79.50	6,606.6	150.6	227.4	-54.5	12.65	
6,776.0	56.25	87.06	6,631.7	155.0	264.4	-44.7	13.96	
6,781.0	56.27	87.81	6,634.5	155.2	268.6	-43.3	12.47	
<b>MDLX</b>								
6,821.0	56.63	93.78	6,656.6	154.7	301.9	-30.4	12.47	
6,866.0	56.01	100.66	6,681.6	150.0	339.0	-27.1	12.79	
6,910.0	57.61	107.19	6,705.7	141.2	374.7	-27.1	12.94	
6,955.0	59.71	113.42	6,729.1	127.8	410.7	35.3	12.71	
7,000.0	61.20	117.76	6,751.3	110.9	446.0	64.3	9.02	
7,044.0	61.11	123.67	6,772.6	91.2	479.1	94.9	7.8	
<b>BRKT</b>								
7,045.0	61.11	123.80	6,773.1	90.7	479.8	95.4	11.76	
7,090.0	61.56	129.64	6,794.7	67.2	511.5	129.3	11.43	
7,104.0	62.41	129.90	6,801.2	59.2	521.0	101.2	6.26	
<b>TLLY</b>								
7,135.0	64.28	130.47	6,815.1	41.4	542.1	164.7	6.26	
7,179.0	67.36	129.84	6,833.2	15.5	572.8	200.2	7.12	
7,224.0	71.18	132.76	6,849.1	-12.3	604.4	237.8	10.43	
7,241.0	71.94	134.15	6,854.5	-23.4	616.1	252.5	8.95	
<b>MRCL_HOT</b>								
7,269.0	73.20	136.42	6,862.9	-42.4	634.9	277.1	8.95	
7,314.0	74.99	142.44	6,875.2	-75.2	663.0	318.1	13.47	
7,359.0	80.49	143.00	6,884.8	-110.2	689.7	360.5	12.28	
7,403.0	85.74	144.23	6,890.0	-145.4	715.6	402.8	12.25	
7,448.0	90.81	147.58	6,891.4	-182.6	740.8	446.8	13.50	

RECEIVED  
Office of Oil and Gas  
OCT 19 2015  
WV Department of  
Environmental Protection



17-06497

EOW Completion Report



<b>Company:</b>	Antero	<b>Local Co-ordinate Reference:</b>	Well Deano Unit 1H
<b>Project:</b>	Doddridge County WV	<b>TVD Reference:</b>	Precision 525: GL 1135" + KB 19' @ 1154.0usft
<b>Site:</b>	Melody Pad	<b>MD Reference:</b>	Precision 525: GL 1135" + KB 19' @ 1154.0usft
<b>Well:</b>	Deano Unit 1H	<b>North Reference:</b>	Grid
<b>Wellbore:</b>	Original Wellpath	<b>Survey Calculation Method:</b>	Minimum Curvature
<b>Design:</b>	As Drilled	<b>Database:</b>	Oklahoma District

Survey							
MD (usft)	Inc (°)	Azi (azimuth) (°)	TVD (usft)	N/S (usft)	E/W (usft)	V. Sec (usft)	DLeg (°/100usft)
7,470.0	91.19	149.37	6,891.0	-201.3	752.3	468.5	8.32
7,515.0	89.69	154.29	6,890.7	-241.0	773.5	513.2	11.43
7,605.0	89.25	157.37	6,891.5	-323.1	810.3	603.1	3.46
7,694.0	88.81	160.44	6,893.0	-406.1	842.4	692.1	3.48
7,784.0	88.81	159.65	6,894.9	-490.7	873.1	782.0	0.88
7,874.0	89.34	163.87	6,896.3	-576.1	901.2	871.8	4.73
7,963.0	89.43	166.68	6,897.3	-662.2	923.8	960.1	3.16
8,053.0	88.37	167.39	6,899.0	-749.9	944.0	1,048.9	1.42
8,143.0	87.85	164.13	6,902.0	-837.1	966.2	1,138.0	3.67
8,233.0	87.82	161.49	6,905.4	-923.0	992.7	1,227.6	2.93
8,322.0	88.11	157.98	6,908.5	-1,006.4	1,023.5	1,316.5	3.95
8,412.0	91.54	159.47	6,908.8	-1,090.2	1,056.2	1,406.5	4.16
8,502.0	89.87	156.84	6,907.7	-1,173.8	1,089.7	1,496.5	3.46
8,591.0	89.08	154.11	6,908.5	-1,254.7	1,126.6	1,585.4	3.19
8,681.0	89.08	155.52	6,910.0	-1,336.2	1,164.9	1,675.2	1.57
8,771.0	90.04	155.96	6,910.6	-1,418.2	1,201.9	1,765.2	1.17
8,860.0	89.08	154.29	6,911.3	-1,498.9	1,239.3	1,854.0	2.16
8,950.0	89.16	156.31	6,912.7	-1,580.7	1,276.9	1,943.9	2.25
9,039.0	88.20	154.38	6,914.8	-1,661.6	1,314.0	2,032.8	2.42
9,129.0	89.69	158.07	6,916.4	-1,743.9	1,350.3	2,122.7	4.42
9,219.0	90.13	158.42	6,916.6	-1,827.5	1,383.7	2,212.7	0.62
9,312.0	89.34	156.57	6,917.0	-1,913.4	1,419.2	2,305.7	2.16
9,406.0	89.69	155.52	6,917.8	-1,999.3	1,457.4	2,399.7	1.18
9,500.0	88.99	154.64	6,918.9	-2,084.5	1,497.0	2,493.5	1.20
9,594.0	89.43	157.98	6,920.2	-2,170.6	1,534.8	2,587.5	3.58
9,687.0	89.25	160.53	6,921.2	-2,257.5	1,567.7	2,680.4	2.75
9,781.0	89.34	160.00	6,922.4	-2,346.0	1,599.4	2,774.3	0.57
9,875.0	88.64	160.09	6,924.1	-2,434.4	1,631.5	2,868.3	0.75
9,969.0	89.25	160.53	6,925.8	-2,522.8	1,663.2	2,962.2	1.88
10,063.0	88.99	159.47	6,927.2	-2,611.2	1,695.3	3,056.1	1.42
10,157.0	90.13	161.23	6,927.9	-2,699.7	1,726.9	3,150.0	2.23
10,250.0	88.29	158.60	6,929.2	-2,787.0	1,758.9	3,243.0	3.45
10,344.0	88.99	159.04	6,931.5	-2,874.6	1,792.8	3,336.9	0.88
10,433.0	89.69	160.09	6,932.5	-2,958.0	1,823.9	3,425.9	1.42
10,523.0	89.25	159.47	6,933.3	-3,042.5	1,855.0	3,515.8	0.84
10,613.0	89.43	158.40	6,934.4	-3,126.5	1,887.3	3,605.8	1.21
10,703.0	89.16	156.84	6,935.5	-3,209.7	1,921.6	3,695.8	1.76
10,792.0	89.69	154.03	6,936.4	-3,290.6	1,958.6	3,784.7	3.21
10,882.0	90.57	156.31	6,936.2	-3,372.3	1,996.4	3,874.6	2.72
10,972.0	89.69	156.22	6,935.9	-3,454.7	2,032.6	3,964.5	0.98
11,062.0	90.48	158.51	6,935.8	-3,537.7	2,067.3	4,054.5	2.69
11,151.0	90.66	158.24	6,934.9	-3,620.4	2,100.1	4,143.5	0.36
11,241.0	88.99	157.81	6,935.2	-3,703.9	2,133.7	4,233.5	1.92
11,331.0	89.16	159.39	6,936.7	-3,787.7	2,166.6	4,323.5	1.77

RECEIVED  
Office of Oil and Gas  
OCT 19 2015  
WV Department of Environmental Protection

17-06497



EOW Completion Report



<b>Company:</b> Antero	<b>Local Co-ordinate Reference:</b> Well Deano Unit 1H
<b>Project:</b> Doddridge County WV	<b>TVD Reference:</b> Precision 525: GL 1135" + KB 19' @ 1154.0usft
<b>Site:</b> Melody Pad	<b>MD Reference:</b> Precision 525: GL 1135" + KB 19' @ 1154.0usft
<b>Well:</b> Deano Unit 1H	<b>North Reference:</b> Grid
<b>Wellbore:</b> Original Wellpath	<b>Survey Calculation Method:</b> Minimum Curvature
<b>Design:</b> As Drilled	<b>Database:</b> Oklahoma District

MD (usft)	Inc (°)	Azi (azimuth) (°)	TVD (usft)	N/S (usft)	E/W (usft)	V. Sec (usft)	DLeg (°/100usft)
11,420.0	89.78	164.05	6,937.5	-3,872.2	2,194.5	4,412.3	5.28
11,510.0	88.90	160.88	6,938.5	-3,958.0	2,221.6	4,502.0	3.66
11,600.0	89.96	164.31	6,939.4	-4,043.8	2,248.5	4,591.7	3.99
11,689.0	87.93	160.97	6,941.1	-4,128.7	2,275.0	4,680.4	4.39
11,779.0	86.70	155.87	6,945.3	-4,212.3	2,308.1	4,770.2	5.82
11,869.0	88.99	155.70	6,948.7	-4,294.3	2,345.0	4,860.1	2.55
11,958.0	87.76	155.26	6,951.2	-4,375.3	2,381.9	4,949.0	1.47
12,048.0	89.60	154.64	6,953.3	-4,456.8	2,420.0	5,038.8	2.16
12,138.0	89.25	153.85	6,954.2	-4,537.8	2,459.1	5,128.6	0.96
12,227.0	89.34	155.17	6,955.3	-4,618.2	2,497.4	5,217.4	1.49
12,317.0	89.25	157.19	6,956.4	-4,700.5	2,533.7	5,307.4	2.25
12,407.0	89.52	156.66	6,957.3	-4,783.3	2,569.0	5,397.4	0.66
12,497.0	89.52	156.49	6,958.1	-4,865.9	2,604.8	5,487.3	0.19
12,586.0	88.64	156.84	6,959.5	-4,947.6	2,640.0	5,576.3	1.06
12,676.0	89.16	157.54	6,961.2	-5,030.5	2,674.9	5,666.3	0.97
12,765.0	89.87	158.16	6,962.0	-5,112.9	2,708.5	5,755.3	1.06
12,855.0	90.22	157.72	6,961.9	-5,196.4	2,742.3	5,845.3	0.62
12,945.0	88.46	157.10	6,963.0	-5,279.4	2,776.8	5,935.2	2.07
13,034.0	88.81	159.04	6,965.1	-5,362.0	2,810.1	6,024.2	2.21
13,124.0	89.87	161.23	6,966.1	-5,446.6	2,840.7	6,114.1	2.70
13,214.0	90.92	162.02	6,965.5	-5,532.0	2,869.0	6,203.9	1.46
13,304.0	89.16	158.24	6,965.4	-5,616.6	2,899.6	6,293.9	4.63
13,393.0	89.52	157.72	6,966.5	-5,699.1	2,933.0	6,382.9	0.71
13,483.0	90.13	157.63	6,966.7	-5,782.4	2,967.2	6,472.9	0.69
13,573.0	89.52	155.26	6,967.0	-5,864.9	3,003.1	6,562.9	2.72
13,663.0	89.52	156.93	6,967.8	-5,947.2	3,039.6	6,652.8	1.86
13,752.0	89.78	156.84	6,968.3	-6,029.0	3,074.5	6,742.7	0.31
13,842.0	90.31	157.10	6,968.2	-6,111.8	3,109.7	6,831.7	0.66
13,931.0	89.52	157.45	6,968.4	-6,193.9	3,144.1	6,920.7	0.97
14,021.0	91.45	158.95	6,967.6	-6,277.5	3,177.5	7,010.7	2.72
14,111.0	90.31	158.68	6,966.2	-6,361.4	3,210.1	7,100.7	2.72
14,200.0	92.68	160.79	6,963.9	-6,444.8	3,240.9	7,189.6	3.56
14,290.0	89.43	158.51	6,962.2	-6,529.2	3,272.2	7,279.5	4.41
14,380.0	89.52	157.54	6,963.1	-6,612.7	3,305.8	7,369.3	1.08
14,470.0	91.10	157.89	6,962.6	-6,695.9	3,340.0	7,459.5	1.80
14,559.0	92.68	159.39	6,959.6	-6,778.8	3,372.4	7,548.5	2.45
14,649.0	92.24	157.89	6,955.8	-6,862.5	3,405.1	7,638.4	1.74
14,739.0	91.80	157.37	6,952.6	-6,945.7	3,439.3	7,728.3	0.76
14,829.0	91.89	155.78	6,949.7	-7,028.2	3,475.1	7,818.2	1.77
14,918.0	91.71	158.16	6,946.9	-7,110.1	3,509.9	7,907.2	2.68
15,008.0	91.98	157.37	6,944.0	-7,193.3	3,543.9	7,997.1	0.93
15,097.0	88.72	157.45	6,943.5	-7,275.5	3,578.1	8,086.1	3.66
15,187.0	89.60	158.33	6,944.8	-7,358.9	3,612.0	8,176.1	1.38
15,277.0	90.13	158.51	6,945.0	-7,442.6	3,645.1	8,266.1	0.62

RECEIVED  
 Office of Oil and Gas  
 OCT 19 2015  
 WV Department of Environmental Protection

16-06497



EOW Completion Report



<b>Company:</b>	Antero	<b>Local Co-ordinate Reference:</b>	Well Deano Unit 1H
<b>Project:</b>	Doddridge County WV	<b>TVD Reference:</b>	Precision 525: GL 1135" + KB 19' @ 1154.0usft
<b>Site:</b>	Melody Pad	<b>MD Reference:</b>	Precision 525: GL 1135" + KB 19' @ 1154.0usft
<b>Well:</b>	Deano Unit 1H	<b>North Reference:</b>	Grid
<b>Wellbore:</b>	Original Wellpath	<b>Survey Calculation Method:</b>	Minimum Curvature
<b>Design:</b>	As Drilled	<b>Database:</b>	Oklahoma District

MD (usft)	Inc (°)	Azi (azimuth) (°)	TVD (usft)	N/S (usft)	E/W (usft)	V. Sec (usft)	DLeg (°/100usft)
15,339.0	90.66	160.35	6,944.6	-7,500.6	3,666.9	8,328.1	3.09
15,398.0	90.66	160.35	6,943.9	-7,556.2	3,686.7	8,387.0	0.00

Measured Depth (usft)	Vertical Depth (usft)	Local Coordinates		Comment
		+N/-S (usft)	+E/-W (usft)	
6,486.0	6,456.7	67.7	55.1	SCMR
6,781.0	6,634.5	155.2	268.6	MDLX
7,044.0	6,772.6	91.2	479.1	BRKT
7,104.0	6,801.2	59.2	521.0	TLTY
7,241.0	6,854.5	-23.4	616.1	MRCL_HOT

Checked By: \_\_\_\_\_ Approved By: \_\_\_\_\_ Date: \_\_\_\_\_

RECEIVED  
Office of Oil and Gas  
OCT 19 2015  
WV Department of  
Environmental Protection