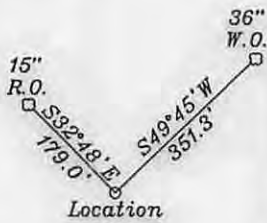


Top Hole 5,241'
Bottom Hole 9,795'
LATITUDE 39-27-30 N

References



Top Hole
NAD 27-39.430842 N, 80.643114 W
UTM NAD83(meters)-4364659.4 N. 530730.5 E
State Plane NAD 27-341085.9 N, 1677116.4 E

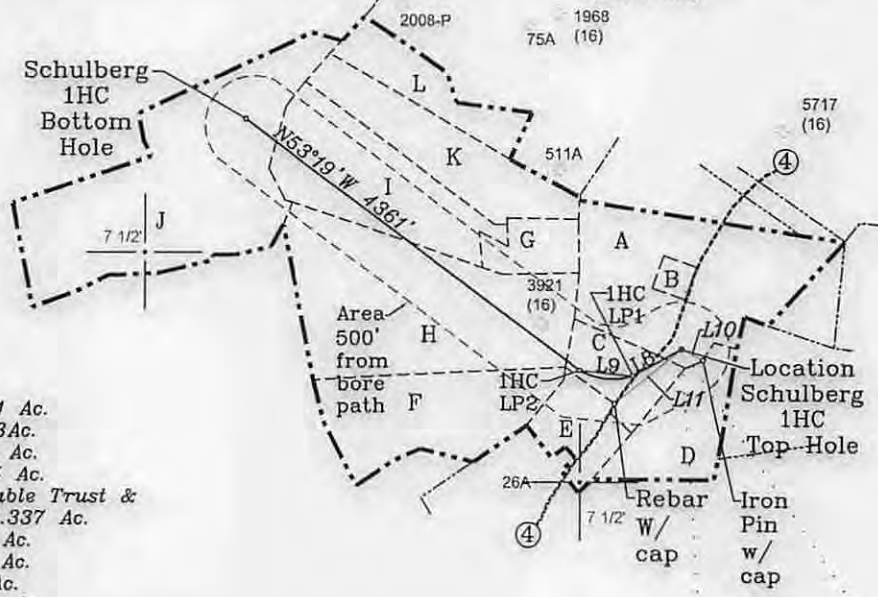
Landing Point LP-1
NAD 27-39.430072 N, 80.644881 W
UTM NAD83(meters)-4364573.4 N. 530578.7 E
State Plane NAD 27-340812 N, 1676614 E

Landing Point LP-2
NAD 27-39.430203 N, 80.646841 W
UTM NAD83(meters)-4364587.3 N. 530410.0 E
State Plane NAD 27-340867 N, 1676061 E

Bottom Hole
NAD 27-39.437231 N, 80.659340 W
UTM NAD83(meters)-4365363.1 N. 529331.3 E
State Plane NAD 27-343472 N, 1672563 E

NUMBER	DIRECTION	DISTANCE
L8	S61°24'W	573'
L9	N84°19'W	556'
L10	N62°47'W	249'
L11	N50°47'E	892'

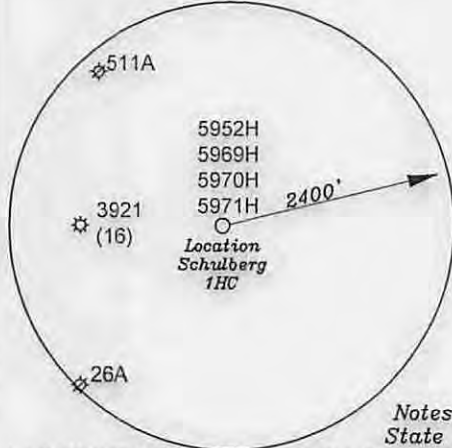
Notes: No water wells were found within 250' of the well location. A house is located S78°11'E 608' from the center of the well pad.
Lat.: 39.431007 N,
Long.: 80.642867 W
(NAD 83)



- A- Moore et vir TM 6-7 64 Ac.
- B- Moore et vir TM 6-36 3Ac.
- C- Looman T.M. 6-16 14.91 Ac.
- D- C. Swiger T.M. 6-37 25 Ac.
- E- Ebeling Family Irrevocable Trust & Dorothy McGee TM 6-16.1 16.337 Ac.
- F- Hayes TM 6-14.1 49.89 Ac.
- G- Sansalone TM 6-2 13.1 Ac.
- H- Gordon TM 6-6 90.25 Ac.
- I- Brownlee TM 6-2.2 52.5 Ac.
- J- Weedon TM 13-20 Tyler Co. 96 Ac.
- K- Davis TM 6-2.1 34 Ac.
- L- Olson TM 6-1.2 25.7 Ac.

NORTH

Bottom Hole 7,562'
Top Hole 9,948'
LONGITUDE 80-37-30 N

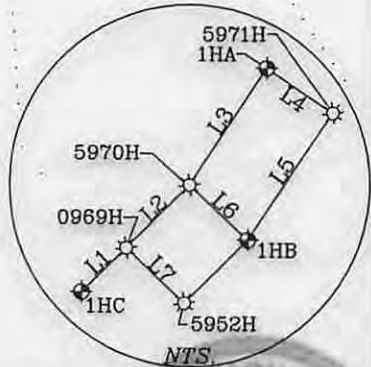


- L1- N45°34'E 15.0'
- L2- N45°34'E 21.6'
- L3- N33°36'E 33.8'
- L4- S55°48'E 19.4'
- L5- S34°03'W 36.7'
- L6- S47°02'E 19.3'
- L7- S47°02'E 19.3'

Notes: All wells within 500' of the horizontal leg are shown on this plat based upon information taken from DEP mapping, well plats, & aerial photos.

Notes: Ties to wells and corners are based on State Plane Grid North-WV North Zone NAD 27.

(+) DENOTES LOCATION OF WELL ON UNITED STATES TOPOGRAPHIC MAPS



FILE NO. _____
DRAWING NO. 1
SCALE 1" = 2000'
MINIMUM DEGREE OF ACCURACY 1 in 200
PROVEN SOURCE OF ELEVATION GPS
submeter unit

I THE UNDERSIGNED, HEREBY CERTIFY THAT THIS PLAT IS CORRECT TO THE BEST OF MY KNOWLEDGE AND BELIEF AND SHOWS ALL THE INFORMATION REQUIRED BY LAW AND THE RULES ISSUED AND PRESCRIBED BY THE DEPARTMENT OF ENVIRONMENTAL PROTECTION.

(SIGNED) David S. Jackson
R.P.E. _____ P.L.S. 708



STATE OF WEST VIRGINIA
Division of Environmental Protection
OFFICE OF OIL AND GAS

DATE March 25, 2014
OPERATOR'S WELL NO. Schulberg 1HC
API WELL NO. 47-017-06547 H6A

WELL TYPE: OIL GAS LIQUID INJECTION WASTE DISPOSAL
(IF "GAS") PRODUCTION STORAGE DEEP SHALLOW

LOCATION: ELEVATION 887.4' WATER SHED Broad Run
DISTRICT McClellan COUNTY Doddridge County
QUADRANGLE Center Point 7 1/2'

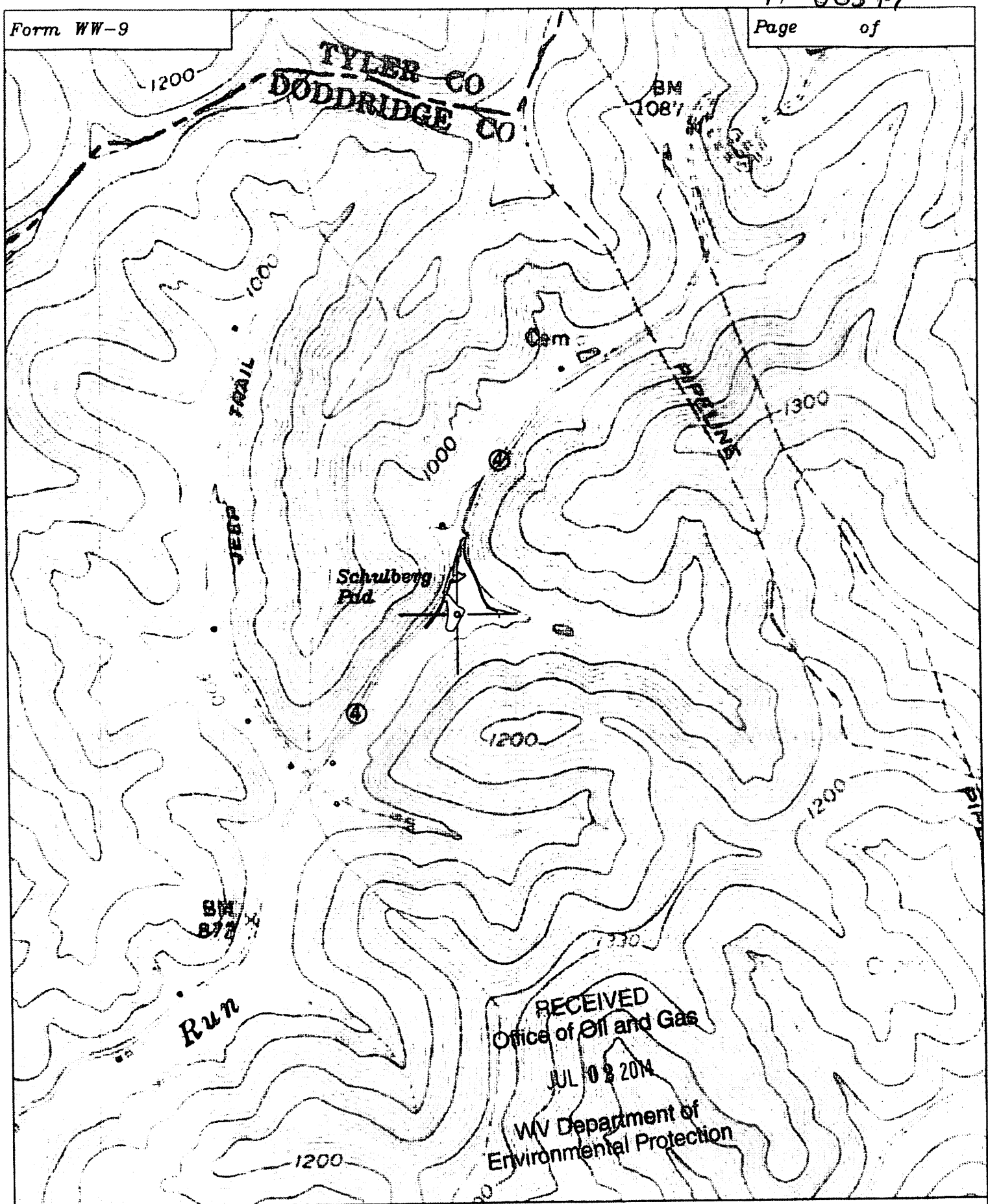
SURFACE OWNER Carrie J. Moore et vir ACREAGE 64 ac.
OIL & GAS ROYALTY OWNER & LEASE NO. Mary Schulberg D74/75 (TM 6/7, 8, 9, 14, 14.1, 15, 16, 16.1, 23, 24, 25, 30, 31, 36, 37); James A. Eliopoulos - Elio - (TM 6/6); Clarence & Joyce Brownlee D405D (TM 6/1.1, 1.2); Willard Harbart T1205/W675/W664 (TM 13/20 Tyler Co.)

PROPOSED WORK: DRILL CONVERT DRILL DEEPER REDRILL FRACTURE OR STIMULATE PLUG OFF OLD FORMATION PERFORATE NEW FORMATION OTHER PHYSICAL CHANGE IN WELL (SPECIFY) _____

PLUG AND ABANDON CLEAN OUT AND REPLUG

TARGET FORMATION Marcellus ESTIMATED DEPTH TVD 6,787'±; TMD 13,325'±

WELL OPERATOR Jay Bee Oil & Gas, Inc. DESIGNATED AGENT Randy Broda
ADDRESS 1720 Rt. 22, East Union, NJ 07083 ADDRESS Route 1, Box 5, Cairo, WV 26137/21/2014



RECEIVED
 Office of Oil and Gas
 JUL 10 2014
 WV Department of
 Environmental Protection

Well: Schulberg
 Quad: Center Point 7 1/2'
 District: McClellan
 County: Doddridge

