

7,538' to Bottom Hole

4,146' to Top Hole

BTM HOLE LATITUDE 39 - 22 - 30
TOP HOLE LATITUDE 39 - 20 - 00

LONGITUDE 80 - 47 - 30

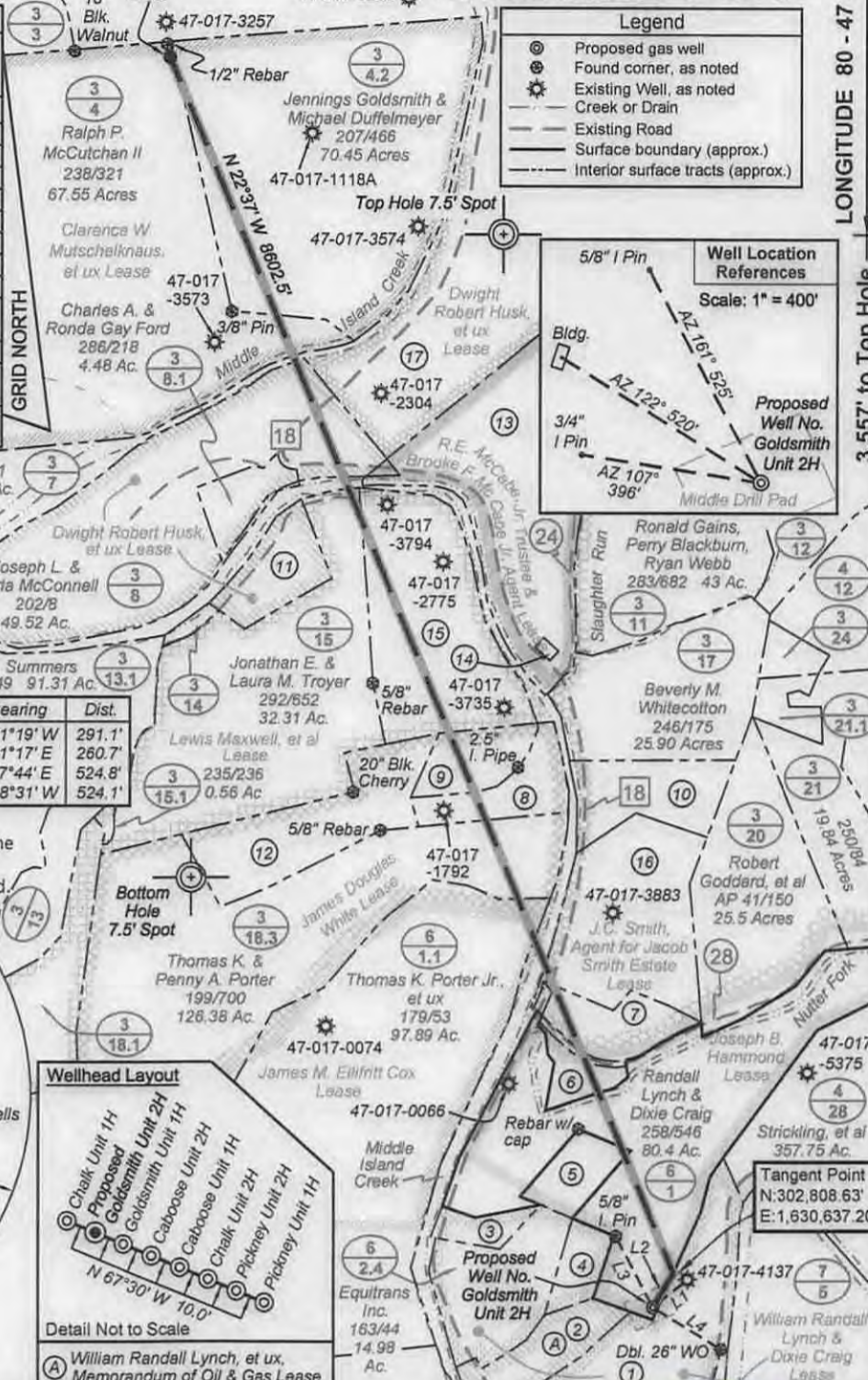
3,557' to Top Hole
10,568' to Bottom Hole

Antero Resources
Well No. Goldsmith Unit 2H
Antero Resources Corporation

Ralph McCutchan II
Chippis Revocable Living Trust
260/379 132.61 Acres

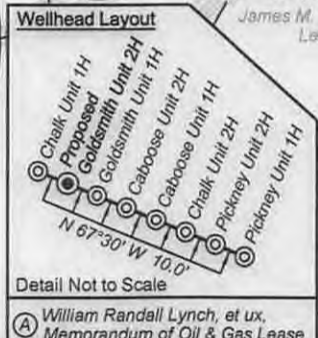
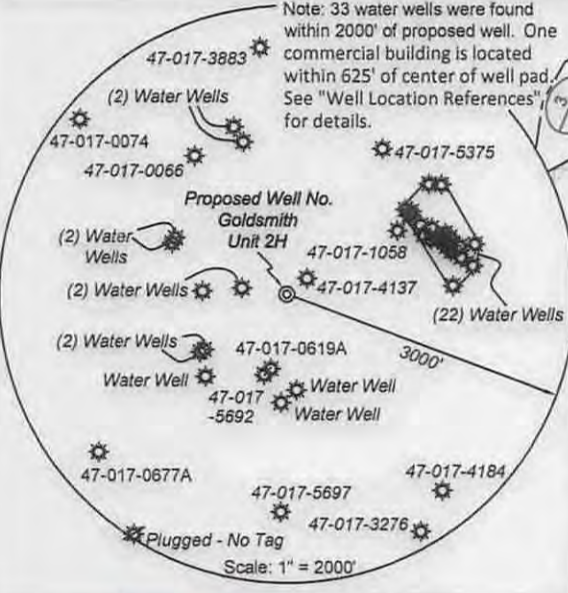
Goldsmith Unit 2H Bottom Hole

TM/Par	Bk / Pg	Acres	Owner(s)
1	6/2	214 / 279	32.19
2	6/2.5	253 / 222	8.66
3	6/2.8	305 / 419	2.68
4	6/2.6	266 / 36	3.52
5	6/1.3	305 / 416	4.68
6	3/23	WB 47 / 723	3.00
7	3/19.1	265 / 582	7.00
8	3/18	228 / 723	6.84
9	3/18.2	232 / 135	6.00
10	3/17.1	261 / 508	9.90
11	3/9	239 / 114	7.39
12	3/18.4	286 / 473	16.58
13	3/10	259 / 310	75.00
14	3/10.1	259 / 312	0.25
15	3/16	AP 40 / 512	26.00
16	3/19	WB 47 / 333	21.64
17	3/5	170 / 587	53.00



Notes:
West Virginia Coordinate System of 1927, North Zone based upon Differential GPS Measurements.
Well No. Goldsmith Unit 2H Top Hole coordinates are
N: 302,585.85' Longitude: 39°19'24.25"
E: 1,630,501.86' Longitude: 80°48'22.11"
Bottom Hole coordinates are
N: 310,749.21' Longitude: 39°20'44.47"
E: 1,627,328.09' Longitude: 80°49'04.01"
UTM Zone 17, NAD 1983
Top Hole Coordinates Bottom Hole Coordinates
N: 4,352,692.978m N: 4,355,163.803m
E: 516,724.764m E: 515,716.380m
Plat orientation and corner and well references are based upon the grid north meridian.
Well location references are based upon the magnetic meridian.

Line	Bearing	Dist.
L1	S 51°19' W	291.1'
L2	N 31°17' E	260.7'
L3	S 27°44' E	524.8'
L4	N 58°31' W	524.1'



I, the undersigned, hereby certify that this plat is correct to the best of my knowledge and belief and shows all the information required by law and the rules issued and prescribed by the Department of Environmental Protection.

Kenneth J. Plum
Kenneth J. Plum, P.S. 2216



FILE NO: 201-30-WU-14
DRAWING NO: 201-14 Goldsmith 2H Plat
SCALE: 1" = 1200'
MINIMUM DEGREE OF ACCURACY:
Submeter
PROVEN SOURCE OF ELEVATION:
CORS, Marietta, OH

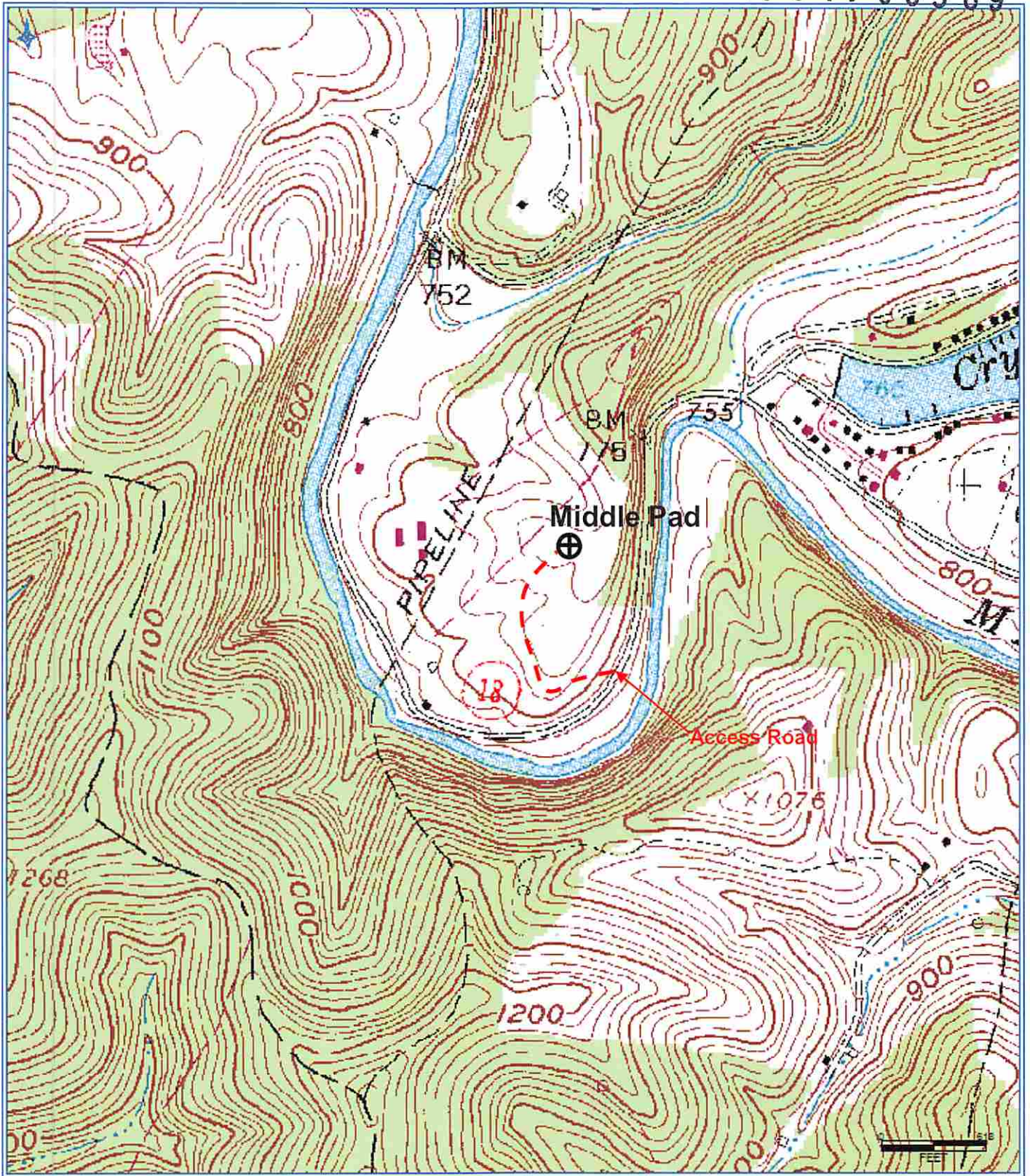
STATE OF WEST VIRGINIA
DEPARTMENT OF ENVIRONMENTAL PROTECTION
OIL AND GAS DIVISION

DATE: August 15 20 14
Operator's Well No. Goldsmith Unit 2H
API WELL NO H6A
47 - 017 - 06589
STATE COUNTY PERMIT

WELL TYPE: OIL GAS LIQUID INJECTION WASTE DISPOSAL
(IF GAS) PRODUCTION: STORAGE DEEP SHALLOW
LOCATION: ELEVATION: 863' WATERSHED: Middle Island Creek QUADRANGLE: West Union
DISTRICT: West Union COUNTY: Doddridge
SURFACE OWNER: Randall Lynch & Dixie Craig ACREAGE: 80.4 32.15 78.75
ROYALTY OWNER: Clarence W. Mutschelknaus, et ux; James Douglas White; Lewis Maxwell, et al LEASE NO: _____ ACREAGE: 168; 61.361; 105
PROPOSED WORK: DRILL CONVERT DRILL DEEPER FRACTURE OR STIMULATE PLUG OFF OLD FORMATION
 PERFORATE NEW FORMATION OTHER PHYSICAL CHANGE IN WELL (SPECIFY) _____ 6,600' TVD
 PLUG AND ABANDON CLEAN OUT AND REPLUG TARGET FORMATION: Marcellus Shale ESTIMATED DEPTH: 16,600' MD

WELL OPERATOR: Antero Resources Corporation DESIGNATED AGENT: Dianna Stamper - CT Corporation System
ADDRESS: 1615 Wynkoop Street ADDRESS: 5400 D Big Tyler Road
Denver, CO 80202 Charleston, WV 25313

11/21/2014



RECEIVED
Office of Oil and Gas

AUG 29 2014

WV Department of
Environmental Protection

Antero Resources Corporation

Appalachian Basin

Goldsmith Unit

Doddridge County

Quadrangle: West Union

Watershed: Middle Island Creek

District: West Union

Date: 5-15-2014