

11,282' to Bottom Hole

7,356' to Top Hole
BTM HOLE LATITUDE 39 - 20 - 00
TOP HOLE LATITUDE 39 - 17 - 30

LONGITUDE 80 - 35 - 00

7,557' to Top Hole

14,842' to Bottom Hole

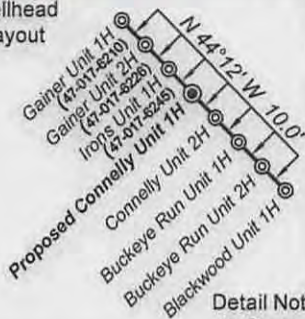
Antero Resources
Well No. Connelly Unit 1H
Antero Resources Corporation



Mark A. & Debora L. Hutson
266/285
127.72 Ac

Connelly Unit 1H
Bottom Hole

Wellhead Layout



Detail Not to Scale

Notes:

West Virginia Coordinate System of 1927, North Zone based upon Differential GPS Measurements.
Well No. Connelly Unit 1H Top Hole coordinates
N: 282,632.71' Latitude: 39°16'14.42"
E: 1,686,033.51' Longitude: 80°36'32.37"
Bottom Hole coordinates
N: 290,522.23' Latitude: 39°17'31.94"
E: 1,682,291.23' Longitude: 80°37'21.21"
UTM Zone 17, NAD 1983
Top Hole Coordinates Bottom Hole Coordinates
N: 4,346,896.752 m N: 4,349,281.292m
E: 533,744.062 m E: 532,563.902 m
Plat orientation and corner and well references are based upon the grid north meridian.
Well location references are based upon the magnetic meridian.

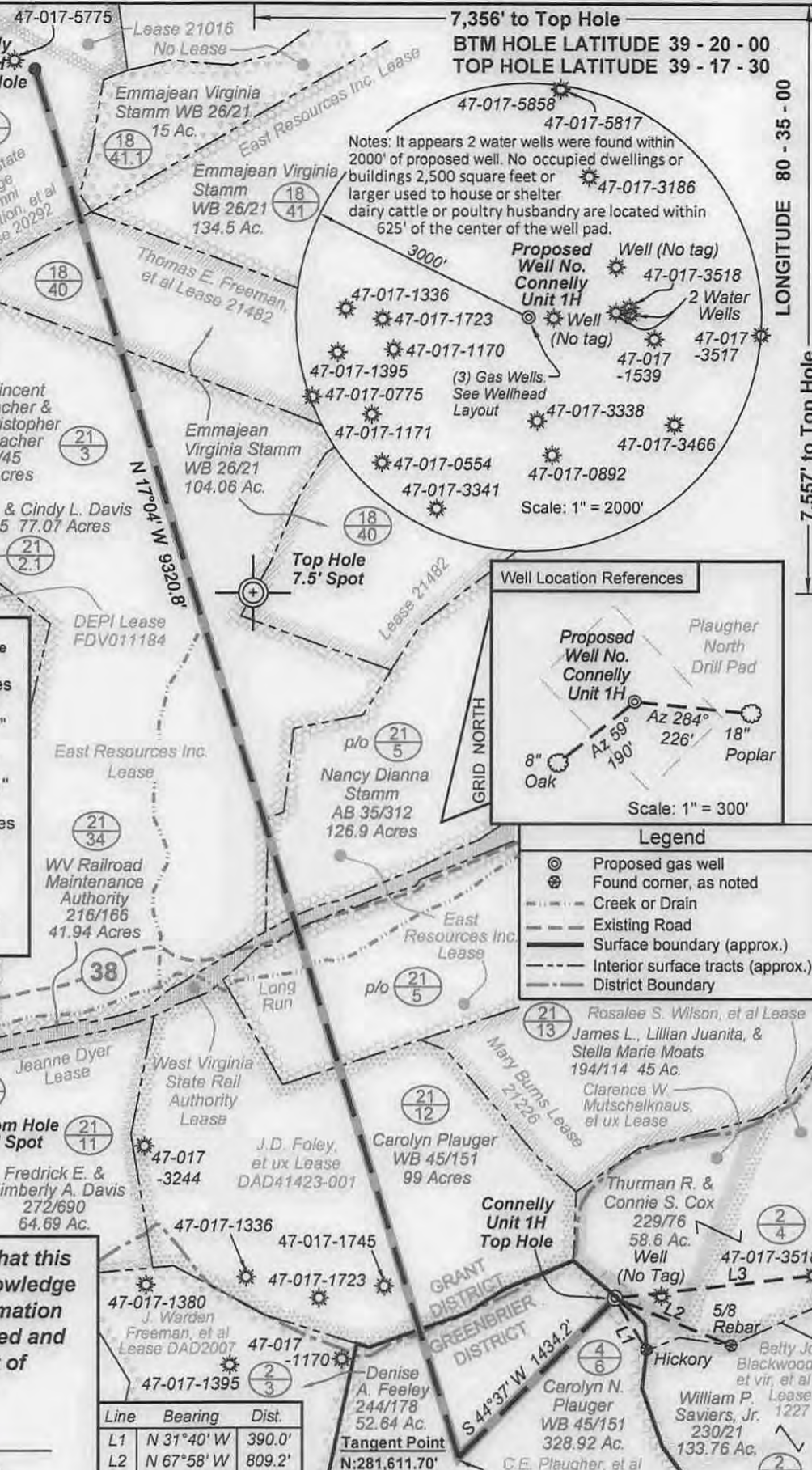


SEAL

I, the undersigned, hereby certify that this plat is correct to the best of my knowledge and belief and shows all the information required by law and the rules issued and prescribed by the Department of Environmental Protection.

Kenneth J. Plum
Kenneth J. Plum, P.S. 2216

Line	Bearing	Dist.
L1	N 31°40' W	390.0'
L2	N 67°58' W	809.2'
L3	S 83°36' W	1287.6'



Well Location References



Scale: 1" = 300'

Legend

- Proposed gas well
- Found corner, as noted
- Creek or Drain
- Existing Road
- Surface boundary (approx.)
- Interior surface tracts (approx.)
- District Boundary

FILE NO: 29-30-G-13
DRAWING NO: 29-13 Connelly Unit 1H
SCALE: 1" = 1000'
MINIMUM DEGREE OF ACCURACY: Submeter
PROVEN SOURCE OF ELEVATION: WVDOT, Bridgeport, WV

STATE OF WEST VIRGINIA
DEPARTMENT OF ENVIRONMENTAL PROTECTION
OIL AND GAS DIVISION

DATE: May 21 20 14
OPERATOR'S WELL NO. Connelly Unit 1H
API WELL NO. 47-017-06615
STATE COUNTY PERMIT

WELL TYPE: OIL GAS LIQUID INJECTION WASTE DISPOSAL
(IF GAS) PRODUCTION: STORAGE DEEP SHALLOW
LOCATION: ELEVATION: 1364' WATERSHED: Buffalo Calf Fork QUADRANGLE: Salem
DISTRICT: Greenbrier COUNTY: Doddridge
SURFACE OWNER: Carolyn N. Plaucher ACREAGE: 328.92
ROYALTY OWNER: C.E. Plaucher, et al; J.D. Foley, et ux; Thomas E. Freeman, et al LEASE NO: 20292, DAD1988 ACREAGE: 167, 144.93; 104; 100
PROPOSED WORK: DRILL CONVERT DRILL DEEPER FRACTURE OR STIMULATE PLUG OFF OLD FORMATION
 PERFORATE NEW FORMATION OTHER PHYSICAL CHANGE IN WELL (SPECIFY)
 PLUG AND ABANDON CLEAN OUT AND REPLUG TARGET FORMATION: Marcellus Shale ESTIMATED DEPTH: 7,700' TVD 17,500' MD

WELL OPERATOR: Antero Resources Corporation DESIGNATED AGENT: Dianna Stamper - CT Corporation System
ADDRESS: 1615 Wynkoop Street ADDRESS: 5400 D Big Tyler Road
Denver, CO 80202 Charleston, WV 25313

11/21/2014



PETRA 2/11/2013 3:39:31 PM

Antero Resources Corporation

Appalachian Basin

Connelly Unit 1H

Doddridge County

RECEIVED
Office of Oil and Gas



REMARKS
QUADRANGLE: SALEM
WATERSHED: BUFFALO CALF FORK
DISTRICT: GREENBRIER
Department of Environmental Protection

February 11, 2013