

LATITUDE 39°17'30"

8,244'

944' TO BOTTOM HOLE
LATITUDE 39°20'00"

LONGITUDE 80°52'30"

5,236'

LONGITUDE 80°50'00"

Antero Resources Corporation
Well No. Duckbill Unit 1H
API 47-017-06667

WELL 1H
BOTTOM HOLE

VIRGINIA L. COTTRILL
ET AL LEASE

WILLIAM COTTRILL JR
ET AL
D.R. 293 PG. 477
T.A. & PAR. 01
6225 AC.±

MAXINE REED
LEASE

EDWARD V. REED
D.R. 181 PG. 027
T.A. & PAR. 02
6933 AC.±

THELMA E.
JAMES ET AL
W.R. 293 PG. 225
T.A. & PAR. 05
107 AC.±

EDWARD V. REED
D.R. 181 PG. 027
T.A. & PAR. 02
6933 AC.±

EDWARD V. REED
D.R. 181 PG. 027
T.A. & PAR. 02
6933 AC.±

EDWARD V. REED
D.R. 181 PG. 027
T.A. & PAR. 02
6933 AC.±

EDWARD V. REED
D.R. 181 PG. 027
T.A. & PAR. 02
6933 AC.±

EDWARD V. REED
D.R. 181 PG. 027
T.A. & PAR. 02
6933 AC.±

EDWARD V. REED
D.R. 181 PG. 027
T.A. & PAR. 02
6933 AC.±

EDWARD V. REED
D.R. 181 PG. 027
T.A. & PAR. 02
6933 AC.±

EDWARD V. REED
D.R. 181 PG. 027
T.A. & PAR. 02
6933 AC.±

EDWARD V. REED
D.R. 181 PG. 027
T.A. & PAR. 02
6933 AC.±

EDWARD V. REED
D.R. 181 PG. 027
T.A. & PAR. 02
6933 AC.±

EDWARD V. REED
D.R. 181 PG. 027
T.A. & PAR. 02
6933 AC.±

EDWARD V. REED
D.R. 181 PG. 027
T.A. & PAR. 02
6933 AC.±

EDWARD V. REED
D.R. 181 PG. 027
T.A. & PAR. 02
6933 AC.±

EDWARD V. REED
D.R. 181 PG. 027
T.A. & PAR. 02
6933 AC.±

EDWARD V. REED
D.R. 181 PG. 027
T.A. & PAR. 02
6933 AC.±

EDWARD V. REED
D.R. 181 PG. 027
T.A. & PAR. 02
6933 AC.±

EDWARD V. REED
D.R. 181 PG. 027
T.A. & PAR. 02
6933 AC.±

EDWARD V. REED
D.R. 181 PG. 027
T.A. & PAR. 02
6933 AC.±

EDWARD V. REED
D.R. 181 PG. 027
T.A. & PAR. 02
6933 AC.±

EDWARD V. REED
D.R. 181 PG. 027
T.A. & PAR. 02
6933 AC.±

EDWARD V. REED
D.R. 181 PG. 027
T.A. & PAR. 02
6933 AC.±

EDWARD V. REED
D.R. 181 PG. 027
T.A. & PAR. 02
6933 AC.±

EDWARD V. REED
D.R. 181 PG. 027
T.A. & PAR. 02
6933 AC.±

EDWARD V. REED
D.R. 181 PG. 027
T.A. & PAR. 02
6933 AC.±

EDWARD V. REED
D.R. 181 PG. 027
T.A. & PAR. 02
6933 AC.±

EDWARD V. REED
D.R. 181 PG. 027
T.A. & PAR. 02
6933 AC.±

EDWARD V. REED
D.R. 181 PG. 027
T.A. & PAR. 02
6933 AC.±

EDWARD V. REED
D.R. 181 PG. 027
T.A. & PAR. 02
6933 AC.±

EDWARD V. REED
D.R. 181 PG. 027
T.A. & PAR. 02
6933 AC.±

EDWARD V. REED
D.R. 181 PG. 027
T.A. & PAR. 02
6933 AC.±

EDWARD V. REED
D.R. 181 PG. 027
T.A. & PAR. 02
6933 AC.±

EDWARD V. REED
D.R. 181 PG. 027
T.A. & PAR. 02
6933 AC.±

EDWARD V. REED
D.R. 181 PG. 027
T.A. & PAR. 02
6933 AC.±

EDWARD V. REED
D.R. 181 PG. 027
T.A. & PAR. 02
6933 AC.±

EDWARD V. REED
D.R. 181 PG. 027
T.A. & PAR. 02
6933 AC.±

EDWARD V. REED
D.R. 181 PG. 027
T.A. & PAR. 02
6933 AC.±

EDWARD V. REED
D.R. 181 PG. 027
T.A. & PAR. 02
6933 AC.±

EDWARD V. REED
D.R. 181 PG. 027
T.A. & PAR. 02
6933 AC.±

EDWARD V. REED
D.R. 181 PG. 027
T.A. & PAR. 02
6933 AC.±

EDWARD V. REED
D.R. 181 PG. 027
T.A. & PAR. 02
6933 AC.±

EDWARD V. REED
D.R. 181 PG. 027
T.A. & PAR. 02
6933 AC.±

EDWARD V. REED
D.R. 181 PG. 027
T.A. & PAR. 02
6933 AC.±

EDWARD V. REED
D.R. 181 PG. 027
T.A. & PAR. 02
6933 AC.±

EDWARD V. REED
D.R. 181 PG. 027
T.A. & PAR. 02
6933 AC.±

EDWARD V. REED
D.R. 181 PG. 027
T.A. & PAR. 02
6933 AC.±

EDWARD V. REED
D.R. 181 PG. 027
T.A. & PAR. 02
6933 AC.±

EDWARD V. REED
D.R. 181 PG. 027
T.A. & PAR. 02
6933 AC.±

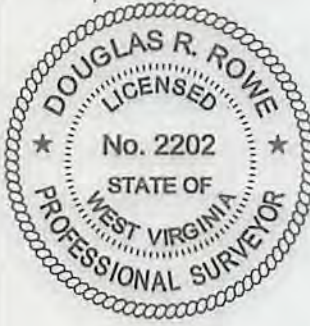
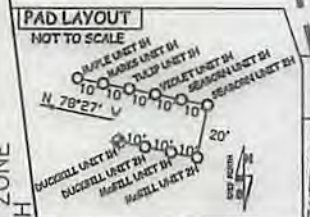
EDWARD V. REED
D.R. 181 PG. 027
T.A. & PAR. 02
6933 AC.±

EDWARD V. REED
D.R. 181 PG. 027
T.A. & PAR. 02
6933 AC.±

AS DRILLED:
WELL 1H TOP HOLE INFORMATION:
N: 286,030ft E: 1,614,318ft
LAT: 39°16'38.25" LON: 80°51'44.84"
BOTTOM HOLE INFORMATION:
N: 296,358ft E: 1,609,980ft
LAT: 39°18'19.67" LON: 80°52'42.01"
WEST VIRGINIA COORDINATE
SYSTEM OF 1927 NORTH ZONE.
ZONE WAS DERIVED FROM
MEASUREMENTS TAKEN WITH
TRIMBLE GEOXT SUBMETER
MAPPING GRADE GPS UNIT.
PLAT ORIENTATION, CORNER,
AND WELL REFERENCE LINE
ARE BASED ON GRID NORTH.

(NAD) 83 (UTM) ZONE 17 COORDS:
WELL 1H TOP HOLE INFORMATION:
N: 4,347,567m E: 511,878m
BOTTOM HOLE INFORMATION:
N: 4,350,691m E: 510,504m

NOTE:
1. NO OCCUPIED DWELLINGS OR BUILDINGS
TWO THOUSAND FIVE HUNDRED (2,500)
SQUARE FEET OR LARGER USED TO HOUSE OR
SHELTER DAIRY CATTLE OR POULTRY
REGARDLESS ARE LOCATED WITHIN SIX
HUNDRED TWENTY-FIVE (625) FEET OF THE
CENTER OF THE WELL PAD.
2. TOP HOLE DATA SHOWN HEREON WAS
PROVIDED BY ALLEGHENY SURVEYS, INC.
3. AS DRILLED DATA WAS PROVIDED BY
ANTERO RESOURCES CORPORATION.
4. WAS IS NOT CERTIFYING THE DATA AND
INFORMATION PROVIDED LISTED IN NOTES 2
AND 3, ONLY THE RELATIONSHIP TO THE DATA
AND INFORMATION PROVIDED TO THE LEASE
ECONOMIES.
5. WAS IS BY NO MEANS RESPONSIBLE FOR
ANY ERRORS OR DISCREPANCIES WITH THE
DATA AND INFORMATION THAT HAS BEEN
PROVIDED.



API WELL # 47 - 017 - 06667
STATE COUNTY PERMIT

JOB # 14-088WA
DRAWING # DUCKBILL1HAD
SCALE 1" = 1000'
MINIMUM DEGREE OF
ACCURACY SUBMETER
PROVEN SOURCE OF ELEV.
SUBMETER MAPPING GRADE GPS

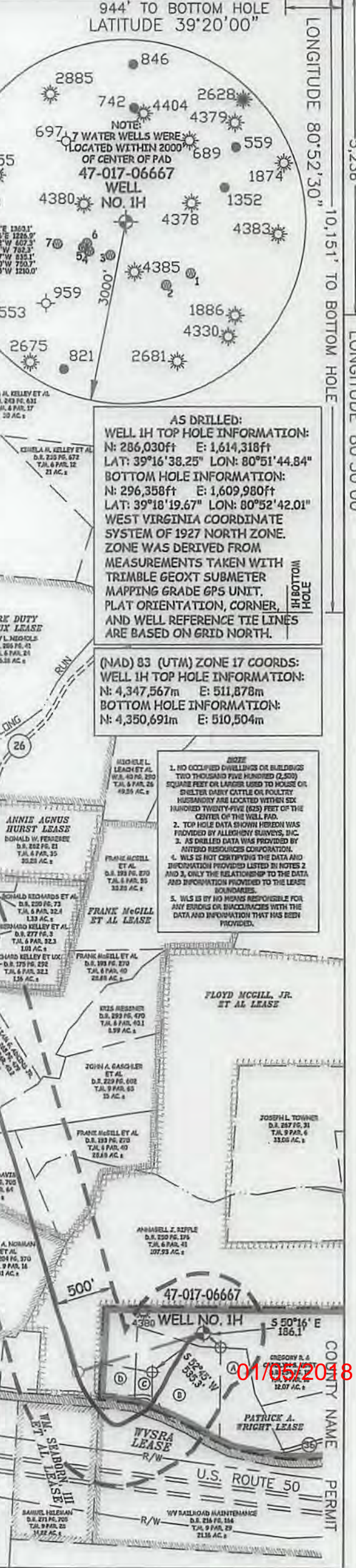
LEGEND
Surface Owner Boundary Lines +/-
Interior Surface Tracts +/-
Existing Fence
Found monument, as noted
Proposed Well Path
As Drilled Well Path
DOUGLAS R. ROWE P.S. 2202
DATE 09/27/17
OPERATOR'S WELL# DUCKBILL UNIT #1H

I THE UNDERSIGNED, HEREBY CERTIFY THAT THIS PLAT IS CORRECT TO THE BEST OF MY KNOWLEDGE AND BELIEF AND SHOWS ALL THE INFORMATION REQUIRED BY LAW AND THE RULES ISSUED AND PERSCRIBED BY THE DEPARTMENT OF ENVIRONMENTAL PROTECTION.



STATE OF WEST VIRGINIA, DIVISION OF ENVIRONMENTAL PROTECTION, OFFICE OF OIL AND GAS
WILLOW LAND SURVEYING PLLC
220 MASONIC AVE. PENNSBORO WEST VIRGINIA 26415

STATE OF WEST VIRGINIA DEPT. OF ENERGY DIVISION OF OIL AND GAS
WELL TYPE: OIL GAS X LIQUID INJECTION WASTE DISPOSAL
(IF "GAS") PRODUCTION X STORAGE DEEP SHALLOW X
LOCATION: ELEVATION 1,112' AS DRILLED WATERSHED HEADWATERS MIDDLE ISLAND CREEK
QUADRANGLE WEST UNION 7.5 (TH) PENNSBORO 7.5 (BH) DISTRICT CENTRAL COUNTY DODDRIDGE
SURFACE OWNER GREGORY R. & CAROLYN S. VOGT ACREAGE 12.07 ACRES +/-
OIL & GAS ROYALTY OWNER PATRICK A. WRIGHT; WVSRA; WM. SEABORN, III ET AL; LEASE ACREAGE 222 AC.; 301.19 AC.; 22 AC.;
FLOYD MCGILL, JR. ET AL; ANNA BARKER ET AL; FRANK MCGILL ET AL; KATE MASON ET AL; JAMES C. RIDDLE ET AL; 107 AC.; 127 AC.; 106 AC.; 06 AC.; 75 AC.;
ANNIE AGNUS HURST; ARNOLD LYLE STUART ET UX; HARRY WILLIAMSON; MAXINE REED; VIRGINIA L. COTTRILL ET AL; 25 AC.; 71 AC.; 105 AC.; 73 AC.; 70 AC.;
PROPOSED WORK: DRILL CONVERT DRILL DEEPER REDRILL FRACTURE OR STIMULATE
PLUG OFF OLD FORMATION PERFORATE NEW FORMATION OTHER PHYSICAL CHANGE IN WELL
(SPECIFY) AS DRILLED PLUG & ABANDON CLEAN OUT & REPLUG
TARGET FORMATION MARCELLUS ESTIMATED DEPTH 6,551' TVD 18,257' MD
WELL OPERATOR ANTERO RESOURCES CORP. DESIGNATED AGENT DIANNA STAMPER
ADDRESS 1615 WYNKOOP STREET ADDRESS 5400 D BIG TYLER ROAD
FORM WW-6 DENVER, CO 80202 CHARLESTON, WV 25313



COUNTY NAME PERMIT

017052018