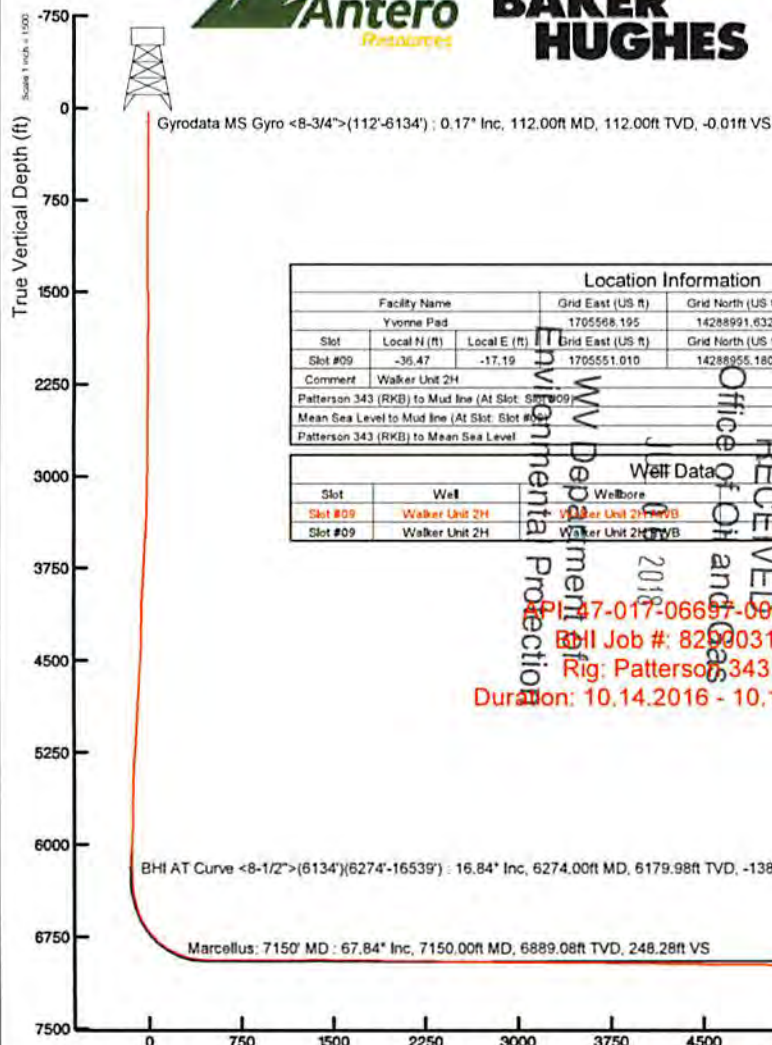


# ANTERO RESOURCES CORPORATION

Location: Doddridge Co., WV  
 Field: Doddridge  
 Facility: Yvonne Pad

Slot: Slot #09  
 Well: Walker Unit 2H  
 Wellbore: Walker Unit 2H PWB

Plot reference wellpath is Walker Unit 2H PWB Rev-A.0	Grid System: NAD27 / UTM Zone 17 North, US feet
True vertical depths are referenced to Patterson 343 (RKB)	* = Wellbore was transformed from a different geoidic datum
Measured depths are referenced to Patterson 343 (RKB)	North Reference: Grid north
Patterson 343 (RKB) to Mean Sea Level: 1252 feet	Scale: True distance
Mean Sea Level to Mud line (At Slot: Slot #09): -1227 feet	Depths are in feet
Coordinates are in feet referenced to Slot	Created by: harelik on 2016-10-26
	Database: WA_MPL_EASTER02_05_DeM

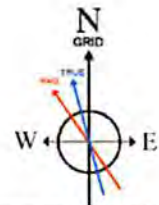
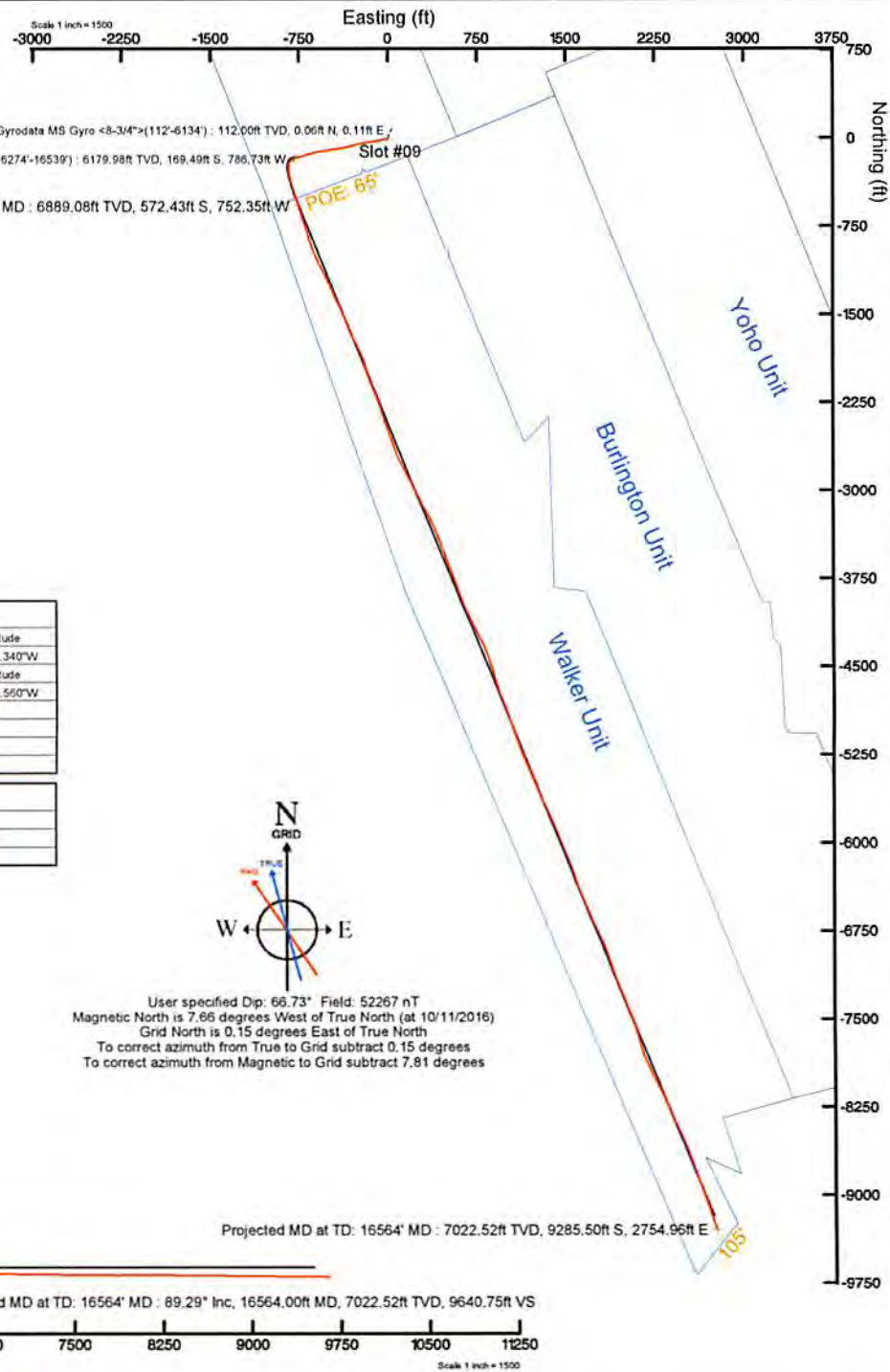


Location Information				
Facility Name	Grid East (US ft)	Grid North (US ft)	Latitude	Longitude
Yvonne Pad	1705568.195	14288991.632	39°20'55.430"N	80°46'10.340"W
Slot	Local N (ft)	Local E (ft)	Grid East (US ft)	Grid North (US ft)
Slot #09	-36.47	-17.19	1705551.010	14288955.180
Comment	Walker Unit 2H			
Patterson 343 (RKB) to Mud line (At Slot: Slot #09)				25ft
Mean Sea Level to Mud line (At Slot: Slot #09)				-1227ft
Patterson 343 (RKB) to Mean Sea Level				1252ft

Well Data			
Slot	Well	Wellbore	Wellpath
Slot #09	Walker Unit 2H	Walker Unit 2H PWB	Walker Unit 2H AWP Proj: 16564'
Slot #09	Walker Unit 2H	Walker Unit 2H PWB	Walker Unit 2H PWB Rev-A.0

RECEIVED  
 WV Department of Environmental Protection  
 Office of Oil and Gas  
 2016  
 API: 47-017-06697-00-00  
 BHI Job #: 829031  
 Rig: Patterson 343  
 Duration: 10.14.2016 - 10.17.2016



User specified Dip: 66.73° Field: 52267 nT  
 Magnetic North is 7.66 degrees West of True North (at 10/11/2016)  
 Grid North is 0.15 degrees East of True North  
 To correct azimuth from True to Grid subtract 0.15 degrees  
 To correct azimuth from Magnetic to Grid subtract 7.81 degrees

Azimuth 157.96° with reference 0.00 N, 0.00 E



## Actual Wellpath Report

Walker Unit 2H AWP Proj: 16564'

Page n of nn



REFERENCE WELLPATH IDENTIFICATION			
Operator	ANTERO RESOURCES CORPORATION	Slot	Slot #09
Area	Doddridge Co., WV	Well	Walker Unit 2H
Field	Doddridge	Wellbore	Walker Unit 2H AWB
Facility	Yvonne Pad		

REPORT SETUP INFORMATION			
Projection System	NAD27 / UTM Zone 17 North, US feet	Software System	WellArchitect® 5.0
North Reference	Grid	User	Hareluk
Scale	0.999605	Report Generated	10/26/2016 at 3:09:25 PM
Convergence at slot	0.15° East	Database/Source file	WA_MPL_EASTERNUS_Defn/Walker_Unit_2H_AWP_Proj_16564_.xml

WELLPATH LOCATION						
	Local coordinates		Grid coordinates		Geographic coordinates	
	North[ft]	East[ft]	Easting[US ft]	Northing[US ft]	Latitude	Longitude
Slot Location	-36.47	-17.19	1705551.01	14288955.18	39°20'55.070"N	80°46'10.560"W
Facility Reference Pt			1705568.20	14288991.63	39°20'55.430"N	80°46'10.340"W
Field Reference Pt			0.00	0.00	0°00'00.000"	85°29'19.301"W

WELLPATH DATUM			
Calculation method	Minimum Curvature	Patterson 343 (RKB) to Facility Vertical Datum	25.00ft
Horizontal Reference Pt	Slot	Patterson 343 (RKB) to Mean Sea Level	1252.00ft
Vertical Reference Pt	Patterson 343 (RKB)	Patterson 343 (RKB) to Mud Line at Slot (Slot #09)	25.00ft
MD Reference Pt	Patterson 343 (RKB)	Section Origin	N 0.00, E 0.00 ft
Field Vertical Reference	Mean Sea Level	Section Azimuth	157.96°





# Actual Wellpath Report

Walker Unit 2H AWP Proj: 16564'

Page n of nn



REFERENCE WELLPATH IDENTIFICATION				Slot	Slot #09
Operator	ANTERO RESOURCES CORPORATION			Well	Walker Unit 2H
Area	Doddridge Co., WV			Wellbore	Walker Unit 2H AWB
Field	Doddridge				
Facility	Yvonne Pad				

WELLPATH DATA (192 stations) † = interpolated/extrapolated station																
MD [ft]	Inclination [°]	Azimuth [°]	TVD [ft]	Vert Sect [ft]	North [ft]	East [ft]	Grid East [US ft]	Grid North [US ft]	Latitude	Longitude	Closure Dist [ft]	Closure Dir [°]	DLS ["/100ft]	Build Rate ["/100ft]	Turn Rate ["/100ft]	Comments
0.00†	0.000	61.530	0.00	0.00	0.00	0.00	1705551.01	14288955.18	39°20'55.070"N	80°46'10.550"W	0.00	0.000	0.00	0.00	0.00	
25.00	0.000	61.530	25.00	0.00	0.00	0.00	1705551.01	14288955.18	39°20'55.070"N	80°46'10.550"W	0.00	0.000	0.00	0.00	0.00	
112.00	0.170	61.530	112.00	-0.01	0.06	0.11	1705551.12	14288955.24	39°20'55.071"N	80°46'10.559"W	0.13	61.530	0.20	0.20	70.72	Gyrodata MS Gyro <9-3/4">(112-6134')
212.00	0.180	86.910	212.00	0.02	0.14	0.40	1705551.41	14288955.32	39°20'55.071"N	80°46'10.555"W	0.42	70.551	0.08	0.01	25.38	
312.00	0.150	100.600	312.00	0.14	0.13	0.69	1705551.70	14288955.31	39°20'55.071"N	80°46'10.551"W	0.70	79.668	0.05	-0.03	13.66	
412.00	0.220	67.400	412.00	0.21	0.17	0.99	1705552.00	14288955.35	39°20'55.072"N	80°46'10.547"W	1.01	80.008	0.13	0.07	-33.20	
512.00	0.170	53.840	512.00	0.17	0.34	1.29	1705552.30	14288955.52	39°20'55.073"N	80°46'10.544"W	1.33	75.387	0.07	-0.05	-13.56	
612.00	0.330	54.540	612.00	0.07	0.59	1.64	1705552.65	14288955.77	39°20'55.076"N	80°46'10.539"W	1.75	70.230	0.16	0.16	0.70	
712.00	0.160	836.700	712.00	-0.14	0.89	1.82	1705552.83	14288955.07	39°20'55.079"N	80°46'10.537"W	2.03	64.077	0.34	-0.17	-77.84	
812.00	3.150	251.970	811.95	-0.47	0.16	1.95	1705550.16	14288955.34	39°20'55.072"N	80°46'10.571"W	0.86	280.955	3.14	2.99	-84.73	
912.00	4.400	254.370	911.73	-1.09	-1.72	1.15	1705543.86	14288953.46	39°20'55.053"N	80°46'10.651"W	7.36	256.477	1.26	1.25	2.40	
1012.00	4.260	255.650	1011.44	-2.01	-3.67	1.44	1705536.57	14289951.51	39°20'55.034"N	80°46'10.744"W	14.90	255.729	0.17	-0.14	1.28	
1112.00	3.630	257.840	1111.20	-3.05	-5.25	1.14	1705529.88	14288949.92	39°20'55.019"N	80°46'10.829"W	21.78	256.022	0.65	-0.63	2.19	
1212.00	1.960	256.530	1211.08	-3.85	-6.33	1.50	1705525.12	14288948.86	39°20'55.008"N	80°46'10.890"W	26.66	256.270	1.67	-1.67	-1.31	
1312.00	0.660	144.880	1311.06	-3.55	-7.20	1.29	1705523.79	14288947.99	39°20'55.000"N	80°46'10.907"W	28.16	255.195	2.29	-1.30	-111.66	
1412.00	1.250	130.280	1411.05	-2.02	-8.37	1.46	1705524.96	14288945.81	39°20'54.988"N	80°46'10.892"W	27.38	252.191	0.63	0.58	-14.60	
1512.00	1.310	131.250	1511.02	-0.03	-9.85	1.40	1705526.65	14288945.35	39°20'54.973"N	80°46'10.871"W	26.28	248.032	0.06	0.06	0.97	
1612.00	0.450	60.850	1611.01	0.94	-10.35	1.37	1705527.85	14288944.79	39°20'54.968"N	80°46'10.855"W	25.39	245.839	1.23	-0.86	-70.40	
1712.00	0.540	350.090	1711.01	0.43	-9.74	1.22	1705528.11	14288945.45	39°20'54.974"N	80°46'10.852"W	24.89	246.969	0.58	0.09	-70.76	
1812.00	0.600	847.440	1811.00	-0.55	-8.75	1.23	1705527.92	14288945.42	39°20'54.984"N	80°46'10.854"W	24.71	249.228	0.07	0.06	-2.65	
1912.00	0.630	845.930	1911.00	-1.61	-7.72	1.05	1705527.67	14288947.46	39°20'54.994"N	80°46'10.858"W	24.59	251.708	0.03	0.03	-1.51	
2012.00	0.610	854.770	2010.99	-2.66	-6.66	1.23	1705527.49	14288948.53	39°20'55.005"N	80°46'10.860"W	24.46	254.208	0.10	-0.02	8.84	
2112.00	0.690	24.490	2110.99	-3.59	-5.48	1.33	1705527.69	14288949.60	39°20'55.015"N	80°46'10.857"W	23.99	256.556	0.34	0.08	29.72	
2212.00	0.800	34.550	2210.98	-4.38	-4.46	1.28	1705528.33	14288950.73	39°20'55.027"N	80°46'10.849"W	23.12	258.891	0.17	0.11	10.06	
2312.00	0.240	53.810	2310.97	-4.82	-3.10	1.22	1705528.90	14288951.43	39°20'55.033"N	80°46'10.842"W	22.44	260.364	0.58	-0.56	19.26	
2412.00	0.770	199.560	2410.97	-4.37	-4.21	1.22	1705528.84	14288950.92	39°20'55.028"N	80°46'10.842"W	22.58	259.113	0.98	0.53	145.75	
2512.00	0.850	206.700	2510.96	-3.38	-5.56	1.22	1705528.74	14288949.62	39°20'55.016"N	80°46'10.850"W	23.41	256.255	0.13	0.08	7.14	
2612.00	0.800	113.810	2610.95	-2.50	-6.80	1.23	1705527.56	14288948.38	39°20'55.003"N	80°46'10.859"W	24.42	253.825	0.11	-0.05	7.11	
2712.00	0.820	211.630	2710.94	-1.68	-7.99	1.22	1705526.80	14288947.19	39°20'54.992"N	80°46'10.869"W	25.51	251.736	0.04	0.02	-2.18	
2812.00	2.490	264.440	2810.90	-1.87	-8.81	1.26	1705524.26	14288946.37	39°20'54.984"N	80°46'10.901"W	28.17	251.770	2.10	1.67	52.81	





# Actual Wellpath Report

Walker Unit 2H AWP Proj: 16564'

Page n of nn



REFERENCE WELLPATH IDENTIFICATION			
Operator	ANTERO RESOURCES CORPORATION	Slot	Slot #09
Area	Doddridge Co., WV	Well	Walker Unit 2H
Field	Doddridge	Wellbore	Walker Unit 2H AWB
Facility	Yvonne Pad		

## WELLPATH DATA (192 stations)

MD (ft)	Inclination (°)	Azimuth (°)	TVD (ft)	Vert Sect (ft)	North (ft)	East (ft)	Grid East (US ft)	Grid North (US ft)	Latitude	Longitude	Closure Dist (ft)	Closure Dir (°)	DLS (°/100ft)	Build Rate (°/100ft)	Turn Rate (°/100ft)	Comments
2912.00	5.890	262.530	2910.62	-3.78	-9.69	-34.01	1705517.01	14288945.49	39°20'54.975"N	80°46'10.993"W	35.36	254.096	3.40	3.40	-1.91	
3012.00	6.210	261.420	3010.06	-6.33	-11.16	-44.45	1705506.58	14288944.02	39°20'54.961"N	80°46'11.126"W	45.83	255.899	0.34	0.32	-1.11	
3112.00	6.850	258.990	3109.41	-8.73	-13.11	-55.65	1705495.38	14288942.07	39°20'54.942"N	80°46'11.269"W	57.17	256.743	0.70	0.64	-2.43	
3212.00	9.260	256.000	3208.42	-11.00	-16.20	-69.31	1705481.73	14288938.99	39°20'54.912"N	80°46'11.443"W	71.18	256.847	2.45	2.41	-2.99	
3312.00	10.640	258.890	3306.91	-13.87	-19.92	-86.18	1705464.87	14288935.27	39°20'54.875"N	80°46'11.658"W	88.45	256.983	1.47	1.38	-2.89	
3412.00	12.200	263.970	3404.93	-18.54	-22.81	-105.75	1705445.31	14288932.38	39°20'54.847"N	80°46'11.907"W	108.18	257.827	1.85	1.56	5.08	
3512.00	13.010	262.710	3502.52	-24.32	-25.35	-127.42	1705423.64	14288929.84	39°20'54.823"N	80°46'12.183"W	129.92	258.748	0.86	0.81	-1.26	
3612.00	13.020	259.800	3599.95	-29.49	-28.77	-149.67	1705401.40	14288926.42	39°20'54.789"N	80°46'12.466"W	152.41	259.118	0.66	0.01	-2.91	
3712.00	14.070	259.180	3697.17	-34.17	-33.05	-172.70	1705378.38	14288922.14	39°20'54.748"N	80°46'12.759"W	175.83	259.166	1.06	1.05	-0.62	
3812.00	14.960	260.240	3793.98	-39.28	-37.52	-197.36	1705353.73	14288917.68	39°20'54.704"N	80°46'13.073"W	200.89	259.236	0.93	0.89	1.06	
3912.00	13.990	260.130	3890.80	-44.57	-41.78	-221.99	1705329.11	14288913.42	39°20'54.663"N	80°46'13.387"W	225.88	259.341	0.97	-0.97	-0.11	
4012.00	13.710	258.520	3987.90	-49.29	-46.21	-245.51	1705305.60	14288908.99	39°20'54.619"N	80°46'13.687"W	249.82	259.340	0.48	-0.28	-1.61	
4112.00	13.460	254.080	4085.10	-52.71	-51.76	-268.31	1705282.80	14288903.44	39°20'54.565"N	80°46'13.977"W	273.26	259.081	1.07	-0.25	-4.44	
4212.00	13.170	252.990	4182.41	-54.95	-58.29	-290.40	1705260.72	14288896.92	39°20'54.501"N	80°46'14.258"W	296.19	258.651	0.38	-0.29	-1.09	
4312.00	13.210	252.240	4279.77	-56.80	-65.10	-312.18	1705238.96	14288890.10	39°20'54.434"N	80°46'14.536"W	318.89	258.220	0.18	0.04	-0.75	
4412.00	13.610	254.370	4377.05	-58.97	-71.76	-334.39	1705216.75	14288883.45	39°20'54.369"N	80°46'14.819"W	342.00	257.888	0.64	0.40	2.13	
4512.00	14.160	262.450	4474.13	-63.34	-76.54	-357.85	1705193.31	14288878.67	39°20'54.323"N	80°46'15.118"W	365.94	257.927	2.01	0.55	8.08	
4612.00	13.800	260.910	4571.17	-69.07	-80.03	-381.75	1705169.41	14288875.18	39°20'54.289"N	80°46'15.422"W	390.05	258.160	0.52	-0.36	-1.54	
4712.00	13.960	261.090	4668.25	-74.49	-83.78	-405.44	1705145.73	14288871.43	39°20'54.252"N	80°46'15.724"W	414.01	258.325	0.17	0.16	0.18	
4812.00	15.040	263.520	4765.07	-80.71	-87.11	-430.25	1705120.93	14288868.10	39°20'54.220"N	80°46'16.040"W	438.98	258.554	1.24	1.08	2.43	
4912.00	14.350	262.330	4861.80	-87.26	-90.23	-455.43	1705095.77	14288864.98	39°20'54.190"N	80°46'16.360"W	464.28	258.793	0.75	-0.69	-1.19	
5012.00	14.160	259.890	4958.72	-92.87	-94.03	-479.75	1705071.45	14288861.18	39°20'54.153"N	80°46'16.670"W	488.88	258.910	0.63	-0.19	-2.44	
5112.00	13.940	256.770	5055.73	-97.24	-98.94	-503.52	1705047.69	14288856.28	39°20'54.105"N	80°46'16.973"W	513.14	258.883	0.79	-0.22	-3.12	
5212.00	14.690	263.180	5152.63	-102.41	-103.20	-527.63	1705023.39	14288852.02	39°20'54.063"N	80°46'17.282"W	537.83	258.937	1.75	0.75	6.41	
5312.00	15.500	264.970	5249.18	-109.65	-105.88	-551.73	1704997.50	14288849.35	39°20'54.037"N	80°46'17.612"W	563.77	259.175	0.93	0.81	1.79	
5412.00	13.870	260.730	5345.91	-116.21	-108.98	-575.88	1704972.36	14288846.24	39°20'54.007"N	80°46'17.932"W	589.05	259.338	1.95	-1.63	-4.24	
5512.00	14.600	257.020	5442.84	-120.84	-113.74	-600.99	1704948.26	14288841.48	39°20'53.961"N	80°46'18.239"W	613.62	259.318	1.17	0.73	-3.71	
5612.00	14.370	253.870	5539.66	-124.11	-120.02	-627.19	1704924.07	14288835.21	39°20'53.900"N	80°46'18.547"W	638.57	259.167	0.82	-0.23	-3.15	
5712.00	13.220	250.590	5636.78	-125.91	-127.27	-649.90	1704901.37	14288827.96	39°20'53.828"N	80°46'18.837"W	662.24	258.920	1.39	-1.15	-3.28	
5812.00	13.940	254.140	5733.98	-127.73	-134.36	-672.27	1704879.01	14288820.87	39°20'53.759"N	80°46'19.122"W	685.56	258.698	1.10	0.72	3.55	





### Actual Wellpath Report

Walker Unit 2H AWP Proj: 16564  
Page n of nn



REFERENCE WELLPATH IDENTIFICATION	
Operator	ANTERO RESOURCES CORPORATION
Area	Doddridge Co., WV
Field	Doddridge
Facility	Yvonne Pad
Slot	Walker Unit 2H
Slot #09	Walker Unit 2H AWB

MD	Inclination	azimuth	TVD	Vert Sect	East	North	East	Grd East	Grd North	Latitude	Longitude	Closure	Closure	Dir	DLS	Build Rate	Turn	Comments
5912.00	14.360	250.050	5830.95	-129.48	-141.88	-695.51	1704855.77	14288813.35	89°20'53.685"N	80°46'19.418"W	709.84	258.470	1.08	0.42	-4.09			
6012.00	14.970	259.140	5927.71	-132.44	-148.55	-719.66	1704831.44	14288806.69	89°20'53.620"N	80°46'19.728"W	735.02	258.340	2.38	0.61	9.09			
6112.00	15.320	259.800	6024.23	-137.65	-153.32	-745.54	1704805.76	14288801.92	89°20'53.573"N	80°46'20.055"W	761.15	258.379	0.39	0.35	0.66			
6134.00	15.590	257.790	6045.44	-138.75	-154.46	-751.29	1704800.01	14288800.78	89°20'53.562"N	80°46'20.128"W	767.01	258.382	2.73	1.23	-9.14			
6274.00	16.840	237.030	6179.98	-138.12	-169.49	-786.73	1704764.60	14288785.76	89°20'53.415"N	80°46'20.680"W	804.78	257.842	4.21	0.89	-14.83			BHI AT Curve <8-1/2">(6134)(6274-16539)
6314.00	16.750	235.880	6218.27	-135.81	-175.87	-798.36	1704754.97	14288779.37	89°20'53.352"N	80°46'20.703"W	815.55	257.546	0.86	-0.23	-2.88			
6361.00	16.810	238.450	6263.39	-133.34	-183.02	-807.42	1704743.91	14288772.23	89°20'53.281"N	80°46'20.844"W	827.91	257.228	2.52	-2.00	5.47			
6409.00	15.050	235.110	6309.66	-130.87	-190.01	-818.11	1704733.23	14288765.24	89°20'53.213"N	80°46'20.980"W	839.88	256.924	2.44	-1.58	-6.96			
6456.00	13.230	223.990	6355.24	-127.33	-197.37	-826.85	1704724.49	14288757.89	89°20'53.140"N	80°46'21.091"W	850.08	256.574	6.94	-3.87	-23.66			
6503.00	13.630	207.180	6400.98	-121.53	-206.17	-833.12	1704718.22	14288749.09	89°20'53.053"N	80°46'21.171"W	858.25	256.100	8.32	0.85	-35.74			
6550.00	13.370	184.060	6446.49	-112.87	-217.14	-837.16	1704714.18	14288738.12	89°20'52.945"N	80°46'21.223"W	864.86	255.459	7.89	3.70	-27.94			
6598.00	16.980	83.620	6492.60	-101.41	-230.31	-839.15	1704712.19	14288724.66	89°20'52.815"N	80°46'21.249"W	870.18	254.653	6.91	3.35	-21.75			
6662.00	23.370	74.500	6580.98	-71.42	-262.11	-837.76	1704703.77	14288693.07	89°20'52.670"N	80°46'21.232"W	874.16	253.724	7.10	5.36	-14.89			
6739.00	28.720	74.030	6623.19	-51.61	-282.64	-836.70	1704705.65	14288672.65	89°20'52.297"N	80°46'21.207"W	882.20	251.314	11.39	-11.38	-1.00			
6787.00	33.040	72.190	6664.38	-27.84	-307.08	-832.72	1704718.62	14288648.02	89°20'52.056"N	80°46'21.170"W	887.53	249.757	9.21	9.00	-3.83			
6801.00†	34.454	70.295	6676.62	-20.27	-314.77	-831.53	1704719.81	14288640.59	89°20'51.991"N	80°46'21.155"W	889.11	249.266	12.59	10.10	-13.54			Middlesex: 6801 MD
6834.00	37.890	66.330	6702.66	-1.11	-333.83	-827.56	1704703.78	14288621.69	89°20'51.180"N	80°46'21.105"W	892.35	248.032	12.59	10.41	-12.02			
6881.00	41.950	63.140	6738.70	28.82	-362.90	-819.59	1704711.75	14288592.73	89°20'51.504"N	80°46'21.004"W	896.34	246.117	9.67	8.64	-6.79			
6930.00	46.790	62.240	6773.72	62.96	-395.60	-809.39	1704721.95	14288559.04	89°20'51.875"W	80°46'20.875"W	900.89	243.952	9.96	9.88	-1.84			
6976.00	51.590	62.070	6803.77	97.68	-428.73	-798.72	1704722.61	14288526.52	89°20'50.853"N	80°46'20.741"W	906.51	241.774	10.44	10.43	-0.37			
6985.00†	52.710	62.151	6809.29	104.76	-435.49	-796.53	1704724.79	14288519.66	89°20'50.786"N	80°46'20.713"W	907.81	241.333	12.47	12.45	0.90			Burkett: 6985 MD
7039.00	57.440	62.470	6831.04	135.82	-465.17	-787.07	1704764.25	14288490.29	89°20'50.492"N	80°46'20.594"W	914.26	239.417	12.47	12.46	0.84			
7099.00†	58.676	62.355	6839.51	149.36	-478.11	-782.97	1704748.35	14288476.65	89°20'50.364"N	80°46'20.542"W	917.40	238.590	7.75	7.72	-0.72			Fully: 7039 MD
7177.00	65.780	62.140	6855.07	176.09	-503.64	-774.79	1704776.52	14288456.04	89°20'50.172"N	80°46'20.439"W	924.10	236.975	7.75	7.72	-0.69			
7179.00	65.780	61.860	6856.09	218.01	-543.61	-761.81	1704789.51	14288411.79	89°20'49.716"N	80°46'20.275"W	935.87	234.489	10.04	10.02	-0.60			
7150.00†	67.844	61.789	6859.08	248.28	-572.43	-752.35	1704798.96	14288382.98	89°20'49.431"N	80°46'20.155"W	945.35	232.734	6.26	6.26	-0.21			Hamilton: 7123 MD Marcellus: 7150 MD
7123.00†	66.155	61.847	6878.53	223.48	-548.82	-760.10	1704791.21	14288406.58	89°20'49.665"N	80°46'20.253"W	937.52	234.170	6.26	6.26	-0.22			
7164.00	68.720	61.760	6894.26	261.25	-584.78	-748.28	1704803.03	14288370.63	89°20'49.309"N	80°46'20.104"W	949.68	231.992	6.26	6.26	-0.21			
7211.00	74.040	62.670	6909.28	305.65	-627.18	-734.68	1704816.62	14288328.25	89°20'48.890"N	80°46'19.932"W	965.98	229.514	11.47	11.32	1.94			

WELLPATH DATA (192 stations) † = interpolated/extrapolated station





RECEIVED  
 Office of Oil and Gas  
 JUL 06 2011  
 WV Department  
 Environmental Protection

## Actual Wellpath Report

Walker Unit 2H AWP Proj: 16564'  
Page n of nn



REFERENCE WELLPATH IDENTIFICATION			
Operator	ANTERO RESOURCES CORPORATION	Slot	Slot #09
Area	Doddridge Co., WV	Well	Walker Unit 2H
Field	Doddridge	Wellbore	Walker Unit 2H AWB
Facility	Yvonne Pad		

WELLPATH DATA (192 stations)																
MD (ft)	Inclination (°)	Azimuth (°)	TVD (ft)	Vert Sect (ft)	North (ft)	East (ft)	Grid East (US ft)	Grid North (US ft)	Latitude	Longitude	Closure Dist (ft)	Closure Dir (°)	DLS (ft/100ft)	Build Rate (ft/100ft)	Turn Rate (ft/100ft)	Comments
7259.00	77.910	163.310	6920.89	352.03	-671.70	-721.06	1704830.23	14288283.74	39°20'48.449"N	80°46'19.760"W	985.45	227.030	8.17	8.06	1.33	
7306.00	83.030	162.210	6928.67	398.21	-715.95	-707.33	1704843.96	14288239.51	39°20'48.012"N	80°46'19.587"W	1006.43	224.653	11.14	10.89	-2.34	
7353.00	89.230	162.760	6931.84	444.93	-760.65	-693.22	1704858.06	14288194.83	39°20'47.569"N	80°46'19.409"W	1029.15	222.345	13.24	13.19	1.17	
7447.00	90.060	162.490	6932.42	538.62	-850.36	-865.15	1704886.12	14288105.16	39°20'46.682"N	80°46'19.054"W	1079.60	218.033	0.93	0.88	-0.29	
7542.00	89.970	160.340	6932.40	633.44	-940.40	-634.88	1704916.38	14288015.15	39°20'45.791"N	80°46'18.672"W	1134.65	214.024	2.27	-0.09	-2.26	
7636.00	89.820	154.880	6932.57	727.40	-1027.28	-599.09	1704952.16	14287928.31	39°20'44.932"N	80°46'18.219"W	1189.21	210.250	5.81	-0.16	-5.81	
7730.00	89.850	152.200	6932.84	821.11	-1111.43	-557.21	1704994.02	14287844.20	39°20'44.099"N	80°46'17.689"W	1243.28	206.627	2.85	0.03	-2.85	
7824.00	90.310	154.280	6932.71	914.79	-1195.35	-514.89	1705036.33	14287760.30	39°20'43.269"N	80°46'17.153"W	1301.53	203.303	2.27	0.49	2.21	
7919.00	89.910	155.720	6932.53	1009.66	-1281.45	-474.74	1705076.46	14287674.24	39°20'42.417"N	80°46'16.644"W	1366.56	200.328	1.57	-0.42	1.52	
8013.00	90.220	155.710	6932.42	1103.59	-1367.13	-436.08	1705115.11	14287588.59	39°20'41.569"N	80°46'16.155"W	1435.00	197.691	0.33	0.33	-0.01	
8108.00	89.970	154.400	6932.26	1198.48	-1453.27	-396.01	1705155.15	14287502.49	39°20'40.716"N	80°46'15.648"W	1506.26	195.243	1.40	-0.26	-1.38	
8202.00	90.490	158.900	6931.89	1292.41	-1539.55	-358.77	1705192.39	14287416.25	39°20'39.863"N	80°46'15.176"W	1580.80	193.118	4.82	0.55	4.79	
8296.00	89.880	158.220	6931.58	1386.40	-1627.04	-324.41	1705226.73	14287328.79	39°20'38.997"N	80°46'14.742"W	1659.07	191.276	0.97	-0.65	-0.72	
8390.00	89.660	153.490	6931.96	1480.31	-1712.79	-285.97	1705265.16	14287243.07	39°20'38.149"N	80°46'14.255"W	1736.50	189.479	5.04	-0.23	-5.03	
8485.00	88.830	152.220	6933.21	1574.93	-1797.32	-242.63	1705308.48	14287158.58	39°20'37.312"N	80°46'13.707"W	1813.62	187.688	1.60	-0.87	-1.34	
8579.00	89.660	163.140	6934.46	1668.77	-1884.14	-206.99	1705344.10	14287071.79	39°20'36.453"N	80°46'13.256"W	1895.47	186.269	11.65	0.88	11.62	
8673.00	89.380	164.730	6935.24	1762.26	-1974.46	-180.98	1705370.10	14286981.51	39°20'35.560"N	80°46'12.928"W	1982.73	185.237	1.72	-0.30	1.69	
8768.00	89.020	158.280	6936.57	1857.01	-2064.50	-150.86	1705400.21	14286891.50	39°20'34.669"N	80°46'12.547"W	2070.00	184.179	6.80	-0.38	-6.79	
8862.00	89.320	156.460	6937.93	1951.00	-2151.25	-114.70	1705436.36	14286804.79	39°20'33.811"N	80°46'12.090"W	2154.30	183.052	1.96	0.32	-1.94	
8956.00	89.380	161.200	6939.00	2044.95	-2238.87	-80.76	1705470.28	14286717.20	39°20'32.944"N	80°46'11.661"W	2240.33	182.066	5.04	0.06	5.04	
9051.00	89.750	162.880	6939.72	2139.71	-2329.24	-51.47	1705499.56	14286626.87	39°20'32.050"N	80°46'11.291"W	2329.80	181.266	1.81	0.39	1.77	
9145.00	89.420	160.170	6940.40	2233.51	-2418.38	-21.69	1705529.33	14286537.76	39°20'31.168"N	80°46'10.915"W	2418.48	180.514	2.90	-0.35	-2.88	
9240.00	89.320	160.230	6941.45	2328.43	-2507.76	10.49	1705561.50	14286448.42	39°20'30.284"N	80°46'10.508"W	2507.78	179.760	0.12	-0.11	0.06	
9334.00	89.450	160.190	6942.46	2422.36	-2596.20	42.32	1705593.31	14286360.01	39°20'29.409"N	80°46'10.106"W	2596.55	179.066	0.14	0.14	-0.04	
9428.00	89.350	159.180	6943.44	2516.31	-2684.35	74.95	1705625.93	14286271.90	39°20'28.537"N	80°46'09.693"W	2685.39	178.401	1.08	-0.11	-1.07	
9522.00	89.260	151.230	6944.58	2610.12	-2769.61	114.33	1705665.30	14286186.67	39°20'27.693"N	80°46'09.195"W	2771.97	177.636	8.46	-0.10	-8.46	
9617.00	89.350	150.980	6945.73	2704.43	-2852.78	160.24	1705711.18	14286103.54	39°20'26.870"N	80°46'08.613"W	2857.27	176.785	0.28	0.09	-0.26	
9711.00	89.230	156.500	6946.90	2798.13	-2937.04	201.81	1705752.74	14286019.31	39°20'26.036"N	80°46'08.087"W	2943.96	176.069	5.87	-0.13	5.87	
9805.00	89.290	153.520	6948.11	2891.99	-3022.22	241.51	1705792.42	14285934.16	39°20'25.194"N	80°46'07.584"W	3031.85	175.431	3.17	0.06	-3.17	
9899.00	89.260	150.820	6949.30	2985.49	-3105.33	285.39	1705836.28	14285851.08	39°20'24.371"N	80°46'07.029"W	3118.42	174.749	2.87	-0.03	-2.87	





# Actual Wellpath Report

Walker Unit 2H AWP Proj: 16564'

Page n of nn



RECEIVED  
 Office of Oil and Gas  
 WV Department of Environmental Protection  
 JUL 06 2018

REFERENCE WELLPATH IDENTIFICATION			
Operator	ANTERO RESOURCES CORPORATION	Slot	Slot #09
Area	Doddridge Co., WV	Well	Walker Unit 2H
Field	Doddridge	Wellbore	Walker Unit 2H AWB
Facility	Yvonne Pad		

WELLPATH DATA (192 stations)																
MD (ft)	Inclination (°)	Azimuth (°)	TVD (ft)	Vert Sect (ft)	North (ft)	East (ft)	Grid East (US ft)	Grid North (US ft)	Latitude	Longitude	Closure Dist (ft)	Closure Dir (°)	DLS (ft/100ft)	Build Rate (ft/100ft)	Turn Rate (ft/100ft)	Comments
9993.00	89.380	150.930	6950.42	3078.77	-3182.44	331.13	1705882.01	14285769.01	39°20'23.558"N	80°46'06.449"W	3204.59	174.069	0.17	0.13	0.12	
10088.00	89.320	156.920	6951.50	3173.48	-3272.73	372.87	1705923.73	14285683.75	39°20'22.714"N	80°46'05.921"W	3293.90	173.500	6.31	-0.06	6.31	
10182.00	89.380	157.560	6952.56	3267.47	-3359.40	409.23	1705960.08	14285597.11	39°20'21.857"N	80°46'05.461"W	3384.24	173.055	0.68	0.06	0.68	
10276.00	89.420	159.940	6953.55	3361.45	-3447.00	443.30	1705994.13	14285509.55	39°20'20.990"N	80°46'05.030"W	3475.39	172.672	2.53	0.04	2.53	
10370.00	89.380	160.150	6954.53	3455.38	-3535.35	475.38	1706026.20	14285421.23	39°20'20.116"N	80°46'04.624"W	3567.17	172.342	0.23	-0.04	0.22	
10465.00	89.320	158.990	6955.61	3550.34	-3624.37	508.53	1706059.34	14285332.25	39°20'19.235"N	80°46'04.205"W	3659.87	172.013	1.22	-0.06	-1.22	
10559.00	89.690	159.440	6956.42	3644.31	-3712.25	541.89	1706092.69	14285244.41	39°20'18.366"N	80°46'03.784"W	3751.59	171.695	0.62	0.39	0.48	
10653.00	89.380	160.200	6957.19	3738.26	-3800.47	574.32	1706125.10	14285156.22	39°20'17.493"N	80°46'03.374"W	3843.62	171.407	0.87	-0.33	0.81	
10747.00	89.260	159.630	6958.30	3832.19	-3888.75	606.60	1706157.36	14285067.98	39°20'16.620"N	80°46'02.966"W	3935.78	171.134	0.62	-0.13	-0.61	
10842.00	89.320	157.780	6959.48	3927.18	-3977.25	641.09	1706191.85	14284979.51	39°20'15.744"N	80°46'02.530"W	4028.59	170.843	1.95	0.06	-1.95	
10936.00	89.200	154.910	6960.69	4021.12	-4063.34	678.80	1706229.54	14284893.46	39°20'14.892"N	80°46'02.053"W	4119.65	170.516	3.06	-0.13	-3.05	
11031.00	89.320	153.470	6961.92	4115.90	-4148.85	720.16	1706270.88	14284807.98	39°20'14.046"N	80°46'01.529"W	4210.89	170.153	1.52	0.13	-1.52	
11125.00	89.290	152.480	6963.06	4209.54	-4232.58	762.87	1706313.57	14284724.28	39°20'13.218"N	80°46'00.988"W	4300.78	169.783	1.05	-0.03	-1.05	
11219.00	89.170	155.780	6964.32	4303.31	-4317.14	803.87	1706354.56	14284639.75	39°20'12.381"N	80°46'00.469"W	4391.35	169.452	3.51	-0.13	3.51	
11314.00	89.260	161.520	6965.63	4398.25	-4405.58	838.44	1706389.12	14284551.35	39°20'11.506"N	80°46'00.032"W	4484.65	169.225	6.04	0.09	6.04	
11408.00	89.350	162.020	6966.77	4492.04	-4494.85	867.84	1706418.51	14284462.11	39°20'10.623"N	80°45'59.661"W	4577.86	169.072	0.54	0.10	0.53	
11503.00	89.290	163.780	6967.89	4586.68	-4585.64	895.77	1706446.43	14284371.36	39°20'09.725"N	80°45'59.308"W	4672.31	168.947	1.85	-0.06	1.85	
11597.00	89.720	164.480	6968.71	4680.13	-4676.05	921.48	1706472.12	14284280.98	39°20'08.830"N	80°45'58.984"W	4765.98	168.852	0.87	0.46	0.74	
11692.00	89.540	156.520	6969.32	4774.95	-4765.53	953.16	1706503.80	14284191.54	39°20'07.945"N	80°45'58.584"W	4859.92	168.689	8.38	-0.19	-8.38	
11786.00	89.320	159.200	6970.26	4868.94	-4852.59	988.58	1706539.20	14284104.52	39°20'07.084"N	80°45'58.136"W	4952.26	168.485	2.86	-0.23	2.85	
11880.00	89.420	160.700	6971.29	4962.88	-4940.88	1020.81	1706571.41	14284016.26	39°20'06.210"N	80°45'57.729"W	5045.23	168.327	1.60	0.11	1.60	
11975.00	89.420	160.110	6972.25	5057.78	-5030.38	1052.67	1706603.26	14283926.80	39°20'05.325"N	80°45'57.326"W	5139.34	168.181	0.62	0.00	-0.62	
12069.00	89.380	159.680	6973.24	5151.73	-5118.64	1084.98	1706635.56	14283838.57	39°20'04.452"N	80°45'56.918"W	5232.37	168.032	0.46	-0.04	-0.46	
12163.00	89.420	159.150	6974.22	5245.69	-5206.64	1118.02	1706668.59	14283750.61	39°20'03.581"N	80°45'56.500"W	5325.32	167.881	0.57	0.04	-0.56	
12258.00	89.260	157.280	6975.31	5340.68	-5294.84	1153.28	1706703.83	14283662.44	39°20'02.709"N	80°45'56.055"W	5418.99	167.712	1.98	-0.17	-1.97	
12352.00	89.320	155.300	6976.48	5434.63	-5380.90	1191.07	1706741.61	14283576.42	39°20'01.857"N	80°45'55.576"W	5511.14	167.519	2.11	0.06	-2.11	
12446.00	89.320	159.120	6977.60	5528.59	-5467.54	1227.47	1706778.00	14283489.81	39°20'01.000"N	80°45'55.116"W	5603.63	167.347	4.06	0.00	4.06	
12540.00	89.230	158.030	6978.78	5622.58	-5555.03	1261.81	1706812.32	14283402.35	39°20'00.134"N	80°45'54.682"W	5696.54	167.203	1.16	-0.10	-1.16	
12634.00	89.260	152.200	6980.02	5716.42	-5640.26	1301.34	1706851.83	14283317.16	39°19'59.291"N	80°45'54.182"W	5788.44	167.008	6.20	0.03	-6.20	
12729.00	89.320	155.540	6981.20	5811.15	-5725.53	1343.17	1706893.65	14283231.92	39°19'58.447"N	80°45'53.652"W	5880.97	166.798	3.52	0.06	3.52	





# Actual Wellpath Report

Walker Unit 2H AWP Proj: 16564

Page n of nn



Operator	ANTERO RESOURCES CORPORATION
Area	Doddridge Co., WV
Field	Doddridge
Facility	Yvonne Pad

## REFERENCE WELLPATH IDENTIFICATION

MD	Inclination	Azimuth	TVD	Vert Sact	North	East	Grid East	Grid North	Latitude	Longitude	Closure Dist	Closure Dir	DLS	Buid Rate	Turn Rate	Comments
----	-------------	---------	-----	-----------	-------	------	-----------	------------	----------	-----------	--------------	-------------	-----	-----------	-----------	----------

12823.00	89.290	156.550	6982.34	5905.09	-581.43	1381.33	1706931.79	14283143.06	39°18'57.59"N	80°45'53.169"W	5973.34	166.629	1.07	-0.03	1.07	
12917.00	89.380	158.080	6983.43	5999.08	-589.15	1417.58	1706968.03	14283059.37	39°18'58.739"N	80°45'52.711"W	6066.11	166.486	1.63	0.10	1.63	
13012.00	89.380	157.700	6984.46	6094.07	-5986.16	1453.34	1707003.77	14282971.40	39°19'55.868"N	80°45'52.259"W	6160.05	166.354	0.40	0.00	-0.40	
13106.00	89.480	156.130	6985.40	6188.05	-6072.62	1490.19	1707040.61	14282884.97	39°19'55.013"N	80°45'51.793"W	6252.79	166.212	1.67	0.11	-1.67	
13200.00	89.200	158.790	6986.48	6282.03	-6168.43	1526.22	1707076.62	14282798.20	39°19'54.164"N	80°45'51.387"W	6345.70	166.083	2.85	-0.30	2.83	
13294.00	88.550	160.640	6988.33	6375.96	-6247.58	1558.80	1707109.19	14282710.08	39°19'53.282"N	80°45'50.925"W	6439.11	165.980	2.09	-0.69	1.97	
13388.00	89.480	162.100	6989.94	6469.78	-6336.64	1588.82	1707139.20	14282621.06	39°19'52.401"N	80°45'50.546"W	6532.79	165.824	1.84	0.99	1.58	
13483.00	89.230	158.200	6991.01	6564.69	-6425.97	1621.07	1707171.44	14282531.76	39°19'51.517"N	80°45'50.139"W	6627.29	165.841	4.11	-0.26	-4.11	
13577.00	89.230	155.590	6992.27	6658.65	-6512.41	1657.95	1707208.30	14282445.35	39°19'50.662"N	80°45'49.672"W	6720.14	165.717	2.78	0.00	-2.78	
13671.00	89.260	158.010	6993.51	6752.62	-6598.80	1694.98	1707245.31	14282359.00	39°19'49.807"N	80°45'49.204"W	6813.01	165.594	2.57	0.03	2.57	
13765.00	89.260	153.740	6994.73	6846.53	-6684.56	1733.39	1707283.71	14282273.27	39°19'48.958"N	80°45'48.718"W	6905.65	165.463	4.54	0.00	-4.54	
13860.00	89.020	154.670	6996.15	6941.31	-6770.08	1774.72	1707325.03	14282187.79	39°19'48.112"N	80°45'48.195"W	6998.83	165.311	1.01	-0.25	0.98	
13954.00	89.230	157.420	6997.59	7035.24	-6856.97	1812.88	1707363.17	14282101.93	39°19'47.262"N	80°45'47.712"W	7091.60	165.189	2.93	0.22	2.93	
14048.00	89.350	159.990	6998.75	7129.21	-6943.54	1847.01	1707397.29	14282014.40	39°19'46.396"N	80°45'47.281"W	7184.99	165.104	2.74	0.13	2.73	
14143.00	89.170	162.950	6999.98	7224.02	-7033.59	1877.20	1707427.46	14281924.38	39°19'45.505"N	80°45'46.900"W	7279.79	165.057	3.12	-0.19	3.12	
14237.00	89.230	159.390	7001.29	7317.85	-7122.54	1907.53	1707457.78	14281835.47	39°19'44.625"N	80°45'46.517"W	7373.55	165.007	3.79	0.06	-3.79	
14331.00	89.320	157.710	7002.48	7411.83	-7210.02	1941.90	1707492.14	14281748.02	39°19'43.759"N	80°45'46.082"W	7466.95	164.926	1.79	0.10	-1.79	
14426.00	89.350	157.900	7003.59	7506.82	-7298.19	1977.25	1707527.48	14281659.89	39°19'42.887"N	80°45'45.635"W	7561.29	164.841	0.93	0.03	0.93	
14520.00	89.320	157.900	7004.68	7600.81	-7385.49	2012.09	1707562.30	14281572.63	39°19'42.023"N	80°45'45.195"W	7654.67	164.760	0.73	-0.03	-0.73	
14614.00	89.350	157.070	7005.77	7694.80	-7472.31	2048.08	1707598.28	14281485.83	39°19'41.164"N	80°45'44.740"W	7747.81	164.672	0.88	0.03	-0.88	
14709.00	89.630	163.640	7006.62	7789.67	-7561.73	2080.00	1707630.19	14281396.45	39°19'40.280"N	80°45'44.337"W	7842.59	164.620	6.92	0.29	6.92	
14803.00	89.880	167.000	7007.02	7882.88	-7652.65	2103.82	1707653.99	14281305.57	39°19'39.380"N	80°45'44.036"W	7936.57	164.628	3.58	0.27	3.57	
14897.00	92.550	163.490	7005.02	7976.07	-7743.51	2127.75	1707677.91	14281214.75	39°19'38.482"N	80°45'43.735"W	8030.52	164.636	4.69	2.84	-3.73	
14922.00	89.170	156.640	7003.60	8070.93	-7832.74	2160.11	1707710.26	14281125.55	39°19'37.599"N	80°45'43.326"W	8125.14	164.582	8.04	-3.56	-7.21	
15086.00	89.200	155.130	7004.93	8164.85	-7918.52	2198.51	1707748.65	14281039.80	39°19'36.750"N	80°45'42.840"W	8218.06	164.483	1.61	0.03	-1.61	
15180.00	89.320	151.950	7006.15	8258.56	-8002.66	2240.39	1707790.51	14280955.70	39°19'35.917"N	80°45'42.310"W	8310.35	164.360	3.39	0.13	-3.38	
15275.00	89.320	154.020	7007.28	8353.19	-8087.28	2283.53	1707833.64	14280871.11	39°19'35.080"N	80°45'41.764"W	8403.49	164.232	2.18	0.00	2.18	
15369.00	89.260	155.140	7008.44	8447.01	-8172.17	2323.88	1707873.97	14280786.25	39°19'34.240"N	80°45'41.254"W	8496.17	164.126	1.19	-0.06	1.19	
15463.00	89.480	160.020	7009.47	8540.98	-8259.04	2359.72	1707909.79	14280699.42	39°19'33.380"N	80°45'40.800"W	8589.53	164.055	5.20	0.23	5.19	
15557.00	89.380	152.590	7010.41	8634.87	-8345.05	2397.46	1707947.52	14280613.45	39°19'32.529"N	80°45'40.323"W	8682.61	163.971	7.90	-0.11	-7.90	

## WELLPATH DATA (192 stations)

RECEIVED  
Office of Oil and Gas  
JUL 06 2018  
WV Department of Environmental Protection





**Actual Wellpath Report**  
Walker Unit 2H AWP Proj: 16564  
Page n of m



Operator	ANTERO RESOURCES CORPORATION	Slot	Slot #09
Area	Doddridge Co., WV	Well	Walker Unit 2H
Field	Doddridge	Wellbore	Walker Unit 2H AWB
Facility	Yvonne Pad		

**REFERENCE WELLPATH IDENTIFICATION**

MD	Inclination	azimuth	TVD	Vert Sect	North	East	Grid East	Grid North	Latitude	Longitude	Closure Dist	Closure Dir	DLS	Build Rate	Turn Rate	Comments
15651.00	89.320	156.570	7011.48	8728.68	8429.93	2437.80	1707987.85	14280528.60	89°19'31.689"N	80°45'39.813"W	8775.34	163.871	4.23	-0.06	4.23	
15746.00	89.290	155.350	7012.63	8823.61	8516.68	2476.50	1708026.53	14280441.89	89°19'30.831"N	80°45'39.323"W	8869.43	163.786	1.28	-0.03	-1.28	
15839.00	89.320	159.680	7013.76	8916.58	8602.58	2512.06	1708062.07	14280356.02	89°19'29.981"N	80°45'38.874"W	8961.85	163.722	4.66	0.03	4.66	
15934.00	89.350	159.340	7014.66	9011.54	8691.56	2545.31	1708095.31	14280267.07	89°19'29.101"N	80°45'38.453"W	9056.59	163.677	0.36	-0.03	-0.36	
16028.00	89.290	160.290	7015.98	9105.48	8779.78	2577.74	1708127.73	14280178.88	89°19'28.228"N	80°45'38.044"W	9150.37	163.638	1.01	-0.06	1.01	
16122.00	89.320	161.990	7017.12	9199.33	8868.73	2608.12	1708158.10	14280089.98	89°19'27.348"N	80°45'37.660"W	9244.28	163.612	1.81	0.03	1.81	
16216.00	89.230	158.580	7018.31	9293.23	8957.20	2639.83	1708189.79	14280001.54	89°19'26.473"N	80°45'37.260"W	9338.10	163.579	3.63	-0.10	-3.63	
16311.00	89.320	160.180	7019.51	9388.19	9046.10	2673.28	1708223.23	14279912.67	89°19'25.593"N	80°45'36.837"W	9432.83	163.537	1.69	0.09	1.69	
16405.00	89.350	162.260	7020.60	9482.03	9135.09	2703.54	1708253.47	14279823.72	89°19'24.713"N	80°45'36.455"W	9526.75	163.514	2.21	0.03	2.21	
16499.00	89.290	161.400	7021.72	9575.80	9224.39	2732.85	1708282.77	14279734.45	89°19'23.829"N	80°45'36.085"W	9620.70	163.497	0.92	-0.06	-0.91	
16539.00	89.290	159.530	7022.21	9615.76	9262.08	2746.22	1708296.14	14279696.77	89°19'23.457"N	80°45'35.916"W	9660.64	163.485	4.67	0.00	-4.67	
16564.00	89.290	159.530	7022.52	9640.75	9285.50	2754.96	1708304.88	14279673.36	89°19'23.225"N	80°45'35.806"W	9685.58	163.475	0.00	0.00	0.00	Projected MD at TD: 16564' MD

Name	TVD	North	East	Grid East	Grid North	Latitude	Longitude	Shape
Walker Unit 2H POE - Plat	6902.00	-558.04	-756.08	1704795.23	14288397.36	39°19'24.330"N	80°46'20.202"W	point
Walker Unit 2H BHL - Plat	6942.00	-9173.75	2732.32	1708282.24	14279785.07	39°19'24.330"N	80°45'36.090"W	point
Walker Unit 2H LP Rev-1	6942.00	-735.37	-684.29	1704866.99	14288220.11	39°20'47.819"N	80°46'19.294"W	point

**TARGETS**

RECEIVED  
Office of Oil and Gas  
JUL 16 2018  
WV Department of  
Environmental Protection





# Actual Wellpath Report

Walker Unit 2H AWP Proj: 16564'

Page n of nn



REFERENCE WELLPATH IDENTIFICATION			
Operator	ANTERO RESOURCES CORPORATION	Slot	Slot #09
Area	Doddridge Co., WV	Well	Walker Unit 2H
Field	Doddridge	Wellbore	Walker Unit 2H AWB
Facility	Yvonne Pad		

WELLPATH COMPOSITION - Ref Wellbore: Walker Unit 2H AWB Ref Wellpath: Walker Unit 2H AWP Proj: 16564'				
Start MD [ft]	End MD [ft]	Positional Uncertainty Model	Log Name/Comment	Wellbore
25.00	6134.00	Gyrodata standard - Drop gyro or Multi-shot	01 Gyrodata MS Gyro <8-3/4">(100'-6122')	Walker Unit 2H AWB
6134.00	16539.00	BHI AutoTrak Curve (Short)	02 BHI AT Curve <8-1/2">(6134')(6274'-16539')	Walker Unit 2H AWB
16539.00	16564.00	Blind Drilling (std)	Projection to bit	Walker Unit 2H AWB

RECEIVED  
 Office of Oil and Gas  
 JUL 06 2018  
 WV Department of  
 Environmental Protection





### Actual Wellpath Report

Walker Unit 2H AWP Proj: 16564'

Page n of nn



REFERENCE WELLPATH IDENTIFICATION			
Operator	ANTERO RESOURCES CORPORATION	Slot	Slot #09
Area	Doddridge Co., WV	Well	Walker Unit 2H
Field	Doddridge	Wellbore	Walker Unit 2H AWB
Facility	Yvonne Pad		

WELLPATH COMMENTS					
MD [ft]	Inclination [°]	Azimuth [°]	TVD [ft]		Comment
112.00	0.170	61.530	112.00	Gyrodatta MS Gyro <8-3/4">(112'-6134')	
6274.00	16.840	237.030	6179.98	BHI AT Curve <8-1/2">(6134')(6274'-16539')	
6801.00	34.454	170.295	6676.02	Middlesex: 6801' MD	
6985.00	52.710	162.151	6809.29	Burkett: 6985' MD	
7039.00	58.676	162.355	6839.51	Tully: 7039' MD	
7123.00	66.155	161.847	6878.53	Hamilton: 7123' MD	
7150.00	67.844	161.789	6889.08	Marcellus: 7150' MD	
16564.00	89.290	159.530	7022.52	Projected MD at TD: 16564' MD	

COMMENTS	
<p>Wellpath general comments                      API: 47-017-06697-00-00                      BHI Job #: 8200031                      Rig: Patterson 343                      Duration: 10.14.2016 - 10.17.2016                      Gyrodatta MS Gyro &lt;8-3/4"&gt;(112'-6134')                      BHI AT Curve &lt;8-1/2"&gt;(6134')(6274'-16539')                      Middlesex: 6801' MD                      Burkett: 6985' MD                      Tully: 7039' MD                      Hamilton: 7123' MD                      Marcellus: 7150' MD                      Projected MD at TD: 16564' MD</p>	<p>RECEIVED                      Office of Oil and Gas                      JUL 06 2018                      WV Department of Environmental Protection</p>