

LATITUDE 39°15'00" 1,300'

8,151' TO BOTTOM HOLE  
LATITUDE 39°15'00"

LONGITUDE 80°50'00"

4,773'

LONGITUDE 80°52'30"

14,575' TO BOTTOM HOLE

COUNTY NAME PERMIT

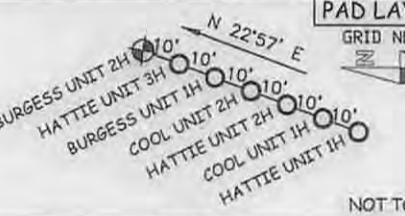
Antero Resources Corporation  
Well No. Burgess Unit 2H

LINE	BEARING	DISTANCE
L1	S 77°58'E	1375.84'
L2	S 76°33'E	1804.51'
L3	S 75°04'E	1554.60'
L4	S 65°48'E	1596.34'
L5	S 64°01'E	1381.04'
L6	S 63°22'E	1636.75'
L7	S 60°31'E	1513.41'
L8	S 56°06'E	1345.06'
L9	S 51°10'E	1175.61'
L10	S 48°41'E	1080.76'
L11	S 44°24'E	1202.68'
L12	S 41°37'E	1125.84'
L13	S 32°54'E	947.63'
L14	S 26° E	1151.20'
L15	S 17°06'E	1113.08'
L16	S 08°23'E	1115.22'
L17	S 01°58'W	1414.85'
L18	S 05°17'W	1426.29'
L19	S 2°05'W	1808.45'
L20	S 42°21'W	1298.64'
L21	S 67°20'W	1418.97'
L22	S 73°44'W	1425.05'

A - STANLEY WEBB D.B. 282 PG. 503 T.M. 15 PAR. 022 0.75 AC.  
 B - STANLEY WEBB D.B. 187 PG. 327 T.M. 15 PAR. 028 0.68 AC.  
 C - STANLEY WEBB D.B. 182 PG. 327 T.M. 15 PAR. 027 2.11 AC.  
 D - STANLEY WEBB D.B. 187 PG. 327 T.M. 15 PAR. 024 0.47 AC.  
 E - ROBERT S. HANCOCK ET AL. D.B. 249 PG. 024 T.M. 15 PAR. 023 1.25 AC.  
 F - EDWARD WEBB ET AL. D.B. 238 PG. 183 T.M. 15 PAR. 026 1.34 AC.  
 G - CHARLES S. WINDGILLER ET AL. D.B. 246 PG. 540 T.M. 15 PAR. 027 0.29 AC.  
 H - JAMES E. WEBB D.B. 273 PG. 418 T.M. 15 PAR. 025 0.29 AC.

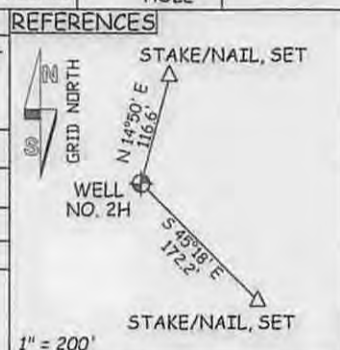


NOTE: 22 WATER WELLS WERE LOCATED WITHIN 2000' OF THE CENTER OF PAD



LEGEND  
 - - - Surface Owner Boundary Lines +/-  
 - - - Interior Surface Tracts +/-  
 X Existing Fence  
 ⊕ Iron Pipe, Found

THOMAS SUMMERS P.S. 2109  
 DATE 04/09/15  
 OPERATOR'S WELL# BURGESS UNIT 2H  
 API WELL # H6A  
 47 - 017 - 06732  
 STATE COUNTY PERMIT



JOB # 14-067WA  
 DRAWING # BURGESS2HR4  
 SCALE 1" = 1000'  
 MINIMUM DEGREE OF ACCURACY SUBMETER  
 PROVEN SOURCE OF ELEV. SUBMETER MAPPING GRADE GPS  
 STATE OF WEST VIRGINIA DEPARTMENT OF ENERGY DIVISION OF OIL AND GAS  
 WELL TYPE: OIL GAS X LIQUID INJECTION WASTE DISPOSAL  
 (IF "GAS") PRODUCTION X STORAGE DEEP SHALLOW X

I, THE UNDERSIGNED, HEREBY CERTIFY THAT THIS PLAT IS CORRECT TO THE BEST OF MY KNOWLEDGE AND BELIEF AND SHOWS ALL THE INFORMATION REQUIRED BY LAW AND THE RULES ISSUED AND PERSCRIBED BY THE DEPARTMENT OF ENVIRONMENTAL PROTECTION.

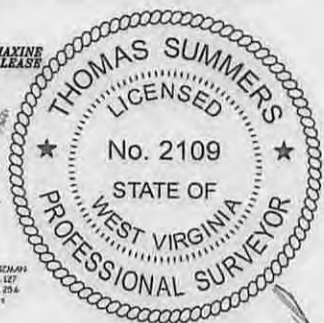
STATE OF WEST VIRGINIA, DIVISION OF ENVIRONMENTAL PROTECTION, OFFICE OF OIL AND GAS  
 WILLOW LAND SURVEYING PLLC  
 220 MASONIC AVE. PENNSBORO WEST VIRGINIA 26415



LOCATION: ELEVATION 1,108' ORIGINAL - 1,095' PROPOSED WATERSHED NORTH FORK HUGHES RIVER  
 QUADRANGLE PULLMAN 7.5' (TOP HOLE) OXFORD 7.5' (BOTTOM HOLE) DISTRICT CENTRAL COUNTY DODDER  
 SURFACE OWNER STANLEY WEBB ET AL ACREAGE 59.18 ACRES +/-  
 OIL & GAS ROYALTY OWNERRALPH LEGGETT ET UX; LAURA WHITE ET VIR; C.E. ROSS; LEASE ACREAGE 75 ACRES±; 25 ACRES±; 60 ACRES±;  
 MARY MAXINE WELCH; F.R. INGRAM ET AL; S. BYRL ROSS ET UX; OPAL GRIBBLE; JEFFERY C. POLAN; RUSSELL GRAY ET AL; LEONA BROADWATER 25 ACRES±; 130 ACRES±; 195 ACRES±; 50 ACRES±; 50 ACRES±; 225 ACRES±; 160 ACRES±  
 PROPOSED WORK: DRILL X CONVERT DRILL DEEPER REDRILL FRACTURE OR STIMULATE X  
 PLUG OFF OLD FORMATION PERFORATE NEW FORMATION X OTHER PHYSICAL CHANGE IN WELL  
 (SPECIFY) PLUG & ABANDON CLEAN OUT & REPLUG  
 TARGET FORMATION MARCELLUS ESTIMATED DEPTH 7,400' TVD 19,000' MD  
 WELL OPERATOR ANTERO RESOURCES CORP. DESIGNATED AGENT DIANNA STAMPER  
 ADDRESS 1615 WYNKOOP STREET ADDRESS 5400 D BIG TYLER ROAD  
 FORM WW-6 DENVER, CO 80202 CHARLESTON, WV 25313

NOTES:  
 WELL 2H TOP HOLE INFORMATION:  
 N: 271,393ft E: 1,609,241ft  
 LAT: 39°14'12.82" LON: 80°52'46.53"  
 BOTTOM HOLE INFORMATION:  
 N: 261,516ft E: 1,614,046ft  
 LAT: 39°12'35.94" LON: 80°51'43.56"  
 WEST VIRGINIA COORDINATE SYSTEM OF 1927 NORTH ZONE.  
 ZONE WAS DERIVED FROM MEASUREMENTS TAKEN WITH TRIMBLE GEOXT SUBMETER MAPPING GRADE GPS UNIT. PLAT ORIENTATION, CORNER, AND WELL REFERENCE TIE LINES ARE BASED ON GRID NORTH.

(NAD) 83 (UTM) ZONE 17 COORDS:  
 WELL 2H TOP HOLE INFORMATION:  
 N: 4,343,082m E: 510,406m  
 BOTTOM HOLE INFORMATION:  
 N: 4,340,097m E: 511,920m



F.R. INGRAM ET AL LEASE

CECIL A. HENZMAN ET AL D.B. 194 PG. 711 T.M. 15 PAR. 26 12282 AC ±

JEFFERY L. DEMOSS ET AL D.B. 204 PG. 334 T.M. 07 PAR. 023 0'08 AC ±

JEFFERY L. DEMOSS ET AL D.B. 209 PG. 292 T.M. 07 PAR. 021 2882 AC ±

JEFFERY C. POLAN LEASE LILLIAN R. BARTER W.B. 28 PG. 247 T.M. 07 PAR. 01 5014 AC ±

JEFFERY L. DEMOSS ET AL D.B. 204 PG. 334 T.M. 07 PAR. 023 0'08 AC ±

JEFFERY L. DEMOSS ET AL D.B. 209 PG. 292 T.M. 07 PAR. 021 2882 AC ±

JEFFERY L. DEMOSS ET AL D.B. 204 PG. 334 T.M. 07 PAR. 023 0'08 AC ±

JEFFERY L. DEMOSS ET AL D.B. 209 PG. 292 T.M. 07 PAR. 021 2882 AC ±

JEFFERY L. DEMOSS ET AL D.B. 204 PG. 334 T.M. 07 PAR. 023 0'08 AC ±

JEFFERY L. DEMOSS ET AL D.B. 209 PG. 292 T.M. 07 PAR. 021 2882 AC ±

JEFFERY L. DEMOSS ET AL D.B. 204 PG. 334 T.M. 07 PAR. 023 0'08 AC ±

JEFFERY L. DEMOSS ET AL D.B. 209 PG. 292 T.M. 07 PAR. 021 2882 AC ±

JEFFERY L. DEMOSS ET AL D.B. 204 PG. 334 T.M. 07 PAR. 023 0'08 AC ±

COASTAL FOREST RESOURCES CO. D.B. 240 PG. 135 T.M. 07 PAR. 03 4438 AC ±

JEFFERY L. DEMOSS ET AL D.B. 204 PG. 334 T.M. 07 PAR. 023 0'08 AC ±

JEFFERY L. DEMOSS ET AL D.B. 209 PG. 292 T.M. 07 PAR. 021 2882 AC ±

JEFFERY L. DEMOSS ET AL D.B. 204 PG. 334 T.M. 07 PAR. 023 0'08 AC ±

JEFFERY L. DEMOSS ET AL D.B. 209 PG. 292 T.M. 07 PAR. 021 2882 AC ±

JEFFERY L. DEMOSS ET AL D.B. 204 PG. 334 T.M. 07 PAR. 023 0'08 AC ±

JEFFERY L. DEMOSS ET AL D.B. 209 PG. 292 T.M. 07 PAR. 021 2882 AC ±

JEFFERY L. DEMOSS ET AL D.B. 204 PG. 334 T.M. 07 PAR. 023 0'08 AC ±

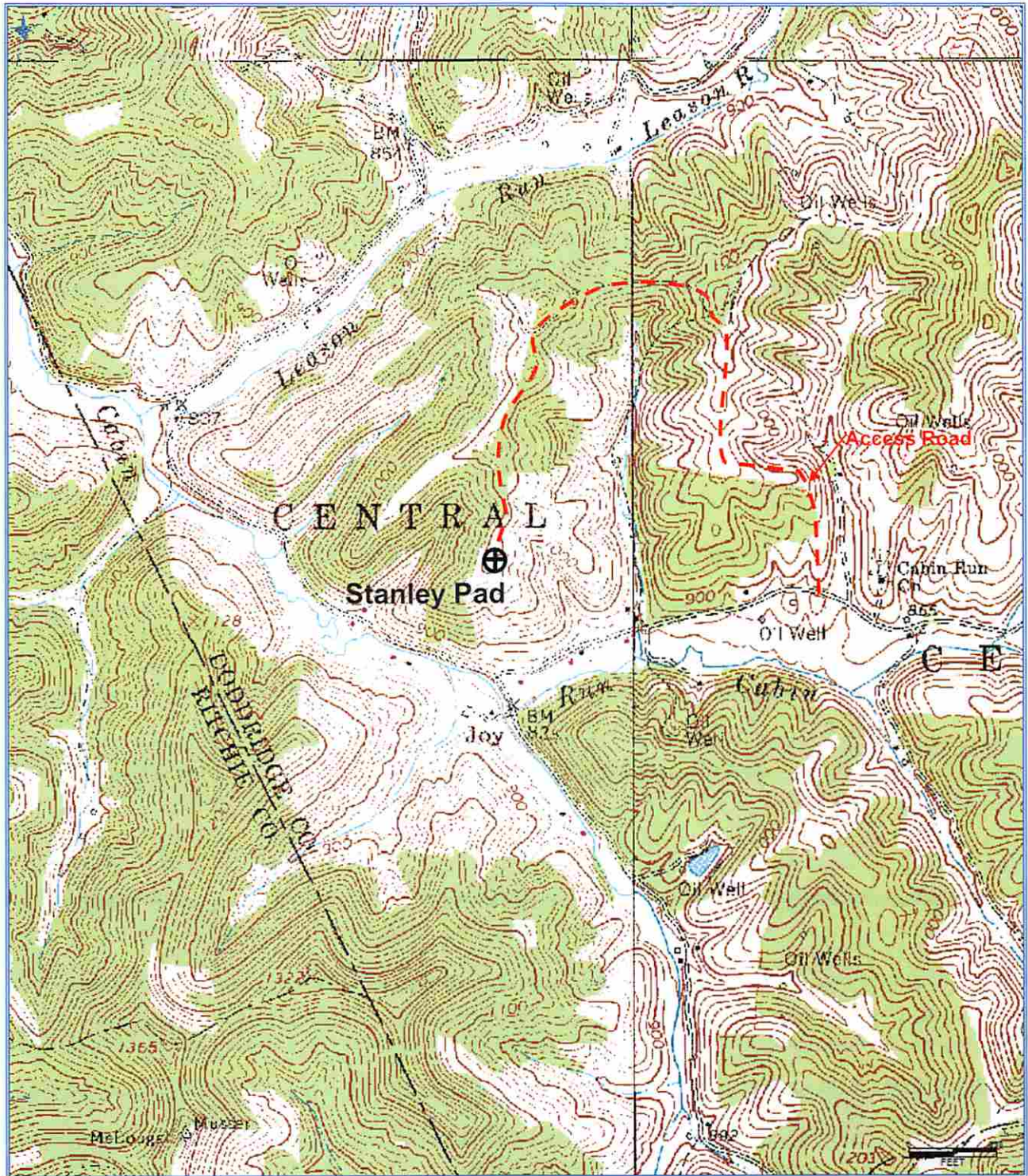
JEFFERY L. DEMOSS ET AL D.B. 209 PG. 292 T.M. 07 PAR. 021 2882 AC ±

JEFFERY L. DEMOSS ET AL D.B. 204 PG. 334 T.M. 07 PAR. 023 0'08 AC ±

JEFFERY L. DEMOSS ET AL D.B. 209 PG. 292 T.M. 07 PAR. 021 2882 AC ±

JEFFERY L. DEMOSS ET AL D.B. 204 PG. 334 T.M. 07 PAR. 023 0'08 AC ±





Received  
Office of Oil & Gas  
APR 24 2015

**Antero Resources Corporation**  
Appalachian Basin  
Burgess Unit 2H  
Doddridge County

Quadrangle: Pullman  
Watershed: North Fork Hughes River  
District: West Union  
Date: 3-12-2015