



# Actual Wellpath Report

OXF-155 513067 AWP Proj: 10826'

Page 1 of 10



Where energy meets innovation.

REFERENCE WELLPATH IDENTIFICATION			
Operator	EQT	Slot	Slot 513067
Area	Doddridge Co., WV	Well	OXF-155 513067
Field	Doddridge	Wellbore	OXF-155 513067 AWB
Facility	OXF-155 Pad		API:47-017-06758

REPORT SETUP INFORMATION			
Projection System	NAD27 / Lambert West Virginia SP, Northern Zone (4701), US feet	Software System	WellArchitect® 5.0
North Reference	Grid	User	Edsaryar
Scale	0.999966	Report Generated	11/Jul/2017 at 01:02
Convergence at slot	0.84° West	Database/Source file	WA_MPL_EASTERNUS_Defn/OXF-155_513067_AWP_Proj_10826_.xml

WELLPATH LOCATION						
	Local coordinates		Grid coordinates		Geographic coordinates	
	North[ft]	East[ft]	Easting[US ft]	Northing[US ft]	Latitude	Longitude
Slot Location	44.44	7.06	1628845.18	262579.71	39°12'48.624"N	80°48'35.764"W
Facility Reference Pt			1628838.12	262535.27	39°12'48.184"N	80°48'35.846"W
Field Reference Pt			0.00	0.00	38°17'12.460"N	86°28'23.077"W

WELLPATH DATUM			
Calculation method	Minimum curvature	Savanna 655 (RKB) to Facility Vertical Datum	1215.00ft
Horizontal Reference Pt	Slot	Savanna 655 (RKB) to Mean Sea Level	1215.00ft
Vertical Reference Pt	Savanna 655 (RKB)	Savanna 655 (RKB) to Mud Line at Slot (Slot 513067)	16.00ft
MD Reference Pt	Savanna 655 (RKB)	Section Origin	N 0.00, E 0.00 ft
Field Vertical Reference	Mean Sea Level	Section Azimuth	308.87°

RECEIVED  
Office of Oil and Gas  
NOV - 3 2017  
WV Department of  
Environmental Protection

01/05/2018



# Actual Wellpath Report

OXF-155 513067 AWP Proj: 10826'

Page 2 of 10



Where energy meets innovation.

REFERENCE WELLPATH IDENTIFICATION			
Operator	EQT	Slot	Slot 513067
Area	Doddridge Co., WV	Well	OXF-155 513067
Field	Doddridge	Wellbore	OXF-155 513067 AWB
Facility	OXF-155 Pad		

WELLPATH DATA (181 stations) † = interpolated/extrapolated station											
MD [ft]	Inclination [°]	Azimuth [°]	TVD [ft]	TVDSS [ft]	Vert Sect [ft]	North [ft]	East [ft]	DLS [°/100ft]	Build Rate [°/100ft]	Turn Rate [°/100ft]	Comments
0.00†	0.000	320.150	0.00	-1215.00	0.00	0.00	0.00	0.00	0.00	0.00	
16.00	0.000	320.150	16.00	-1199.00	0.00	0.00	0.00	0.00	0.00	0.00	
103.00	0.630	320.150	103.00	-1112.00	0.47	0.37	-0.31	0.72	0.72	-45.80	
203.00	0.150	25.340	203.00	-1012.00	1.04	0.91	-0.60	0.58	-0.48	65.19	
303.00	0.140	55.520	303.00	-912.00	1.03	1.10	-0.45	0.08	-0.01	30.18	
403.00	0.140	91.740	403.00	-812.00	0.90	1.16	-0.22	0.09	0.00	36.22	
503.00	0.250	116.600	502.99	-712.01	0.59	1.06	0.09	0.14	0.11	24.86	
603.00	0.250	112.360	602.99	-612.01	0.17	0.88	0.49	0.02	0.00	-4.24	
703.00	0.310	105.900	702.99	-512.01	-0.29	0.72	0.95	0.07	0.06	-6.46	
803.00	0.270	95.750	802.99	-412.01	-0.74	0.62	1.45	0.06	-0.04	-10.15	
903.00	0.270	101.330	902.99	-312.01	-1.14	0.55	1.91	0.03	0.00	5.58	
1003.00	0.300	100.920	1002.99	-212.01	-1.58	0.46	2.40	0.03	0.03	-0.41	
1103.00	0.290	110.120	1102.99	-112.01	-2.05	0.32	2.90	0.05	-0.01	9.20	
1203.00	0.300	117.080	1202.99	-12.01	-2.55	0.11	3.37	0.04	0.01	6.96	
1303.00	0.380	119.370	1302.98	87.98	-3.13	-0.17	3.89	0.08	0.08	2.29	
1403.00	0.410	119.240	1402.98	187.98	-3.81	-0.50	4.49	0.03	0.03	-0.13	
1503.00	0.440	109.840	1502.98	287.98	-4.53	-0.81	5.16	0.08	0.03	-9.40	
1603.00	0.720	97.620	1602.97	387.97	-5.43	-1.02	6.15	0.30	0.28	-12.22	
1703.00	0.910	91.900	1702.96	487.96	-6.60	-1.13	7.56	0.21	0.19	-5.72	
1803.00	1.290	70.060	1802.95	587.95	-7.82	-0.78	9.42	0.56	0.38	-21.84	
1903.00	1.450	65.610	1902.92	687.92	-8.97	0.13	11.63	0.19	0.16	-4.45	
2003.00	1.670	59.350	2002.88	787.88	-10.05	1.40	14.03	0.28	0.22	-6.26	
2103.00	1.810	56.160	2102.83	887.83	-11.03	3.02	16.60	0.17	0.14	-3.19	
2203.00	2.020	51.080	2202.78	987.78	-11.87	5.01	19.28	0.27	0.21	-5.08	
2303.00	2.190	49.470	2302.71	1087.71	-12.59	7.35	22.10	0.18	0.17	-1.61	
2403.00	2.300	47.740	2402.63	1187.63	-13.25	9.95	25.04	0.13	0.11	-1.73	
2503.00	2.340	42.740	2502.55	1287.55	-13.70	12.79	27.91	0.21	0.04	-5.00	
2603.00	2.370	35.830	2602.47	1387.47	-13.73	15.97	30.51	0.29	0.03	-6.91	
2703.00	2.330	29.610	2702.38	1487.38	-13.29	19.41	32.72	0.26	-0.04	-6.22	
2803.00	2.350	25.110	2802.30	1587.30	-12.48	23.04	34.60	0.18	0.02	-4.50	

RECEIVED  
Office of Oil and Gas  
NOV - 3 2017  
WV Department of  
Environmental Protection

01/05/2018



# Actual Wellpath Report

OXF-155 513067 AWP Proj: 10826'

Page 3 of 10



Where energy meets innovation.

REFERENCE WELLPATH IDENTIFICATION			
Operator	EQT	Slot	Slot 513067
Area	Doddridge Co., WV	Well	OXF-155 513067
Field	Doddridge	Wellbore	OXF-155 513067 AWB
Facility	OXF-155 Pad		

## WELLPATH DATA (181 stations)

MD [ft]	Inclination [°]	Azimuth [°]	TVD [ft]	TVDS [ft]	Vert Sect [ft]	North [ft]	East [ft]	DLS [°/100ft]	Build Rate [°/100ft]	Turn Rate [°/100ft]	Comments
2903.00	2.290	19.190	2902.22	1687.22	-11.32	26.78	36.12	0.25	-0.06	-5.92	
3003.00	2.310	14.580	3002.14	1787.14	-9.82	30.62	37.29	0.19	0.02	-4.61	
3103.00	2.390	11.260	3102.05	1887.05	-8.02	34.61	38.20	0.16	0.08	-3.32	
3203.00	2.510	10.920	3201.96	1986.96	-6.03	38.81	39.02	0.12	0.12	-0.34	
3303.00	2.630	8.490	3301.86	2086.86	-3.84	43.23	39.78	0.16	0.12	-2.43	
3403.00	2.510	2.660	3401.76	2186.76	-1.39	47.68	40.22	0.29	-0.12	-5.83	
3503.00	2.530	1.690	3501.67	2286.67	1.24	52.08	40.38	0.05	0.02	-0.97	
3603.00	1.720	2.500	3601.60	2386.60	3.46	55.78	40.51	0.81	-0.81	0.81	
3703.00	1.080	356.840	3701.57	2486.57	4.98	58.22	40.53	0.65	-0.64	-5.66	
3803.00	0.850	353.360	3801.55	2586.55	6.14	59.90	40.39	0.24	-0.23	-3.48	
3903.00	0.600	339.800	3901.54	2686.54	7.12	61.13	40.12	0.30	-0.25	-13.56	
4003.00	0.640	321.150	4001.54	2786.54	8.12	62.06	39.59	0.20	0.04	-18.65	
4103.00	0.670	301.650	4101.53	2886.53	9.24	62.80	38.74	0.22	0.03	-19.50	
4203.00	0.740	282.750	4201.52	2986.52	10.40	63.25	37.62	0.24	0.07	-18.90	
4303.00	0.840	285.320	4301.51	3086.51	11.66	63.58	36.28	0.11	0.10	2.57	
4403.00	0.870	276.480	4401.50	3186.50	12.97	63.86	34.82	0.14	0.03	-8.84	
4467.00	1.090	280.960	4465.49	3250.49	13.92	64.03	33.74	0.36	0.34	7.00	Gyro Tie In=4467' MD
4472.00	1.010	280.630	4470.49	3255.49	14.00	64.05	33.65	1.60	-1.60	-6.60	KOP 1=4472' MD
4516.00	2.790	284.360	4514.47	3299.47	15.31	64.39	32.23	4.05	4.05	8.48	
4558.00	7.620	282.580	4556.28	3341.28	18.74	65.25	28.52	11.51	11.50	-4.24	
4600.00	11.990	283.870	4597.66	3382.66	25.20	66.90	21.56	10.42	10.40	3.07	
4644.00	14.840	279.520	4640.45	3425.45	34.25	68.93	11.57	6.87	6.48	-9.89	
4686.00	18.170	270.600	4680.72	3465.72	44.08	69.89	-0.29	9.94	7.93	-21.24	
4728.00	21.530	258.570	4720.24	3505.24	54.16	68.43	-14.40	12.56	8.00	-28.64	
4771.00	23.540	244.890	4759.98	3544.98	62.97	63.22	-29.93	13.02	4.67	-31.81	
4813.00	25.250	230.960	4798.26	3583.26	68.53	54.01	-44.49	14.26	4.07	-33.17	
4855.00	27.870	225.290	4835.83	3620.83	71.51	41.45	-58.43	8.67	6.24	-13.50	
4899.00	30.040	224.950	4874.33	3659.33	73.82	26.42	-73.52	4.95	4.93	-0.77	
4943.00	31.780	228.820	4912.08	3697.08	76.99	11.00	-90.03	6.00	3.95	8.80	
4987.00	34.440	234.240	4948.94	3733.94	82.29	-3.91	-108.85	9.04	6.05	12.32	

RECEIVED  
Office of Oil and Gas  
NOV - 3 2017  
WV Department of  
Environmental Protection

01/05/2018



# Actual Wellpath Report

OXF-155 513067 AWP Proj: 10826'

Page 4 of 10



Where energy meets innovation.

REFERENCE WELLPATH IDENTIFICATION			
Operator	EQT	Slot	Slot 513067
Area	Doddridge Co., WV	Well	OXF-155 513067
Field	Doddridge	Wellbore	OXF-155 513067 AWB
Facility	OXF-155 Pad		

WELLPATH DATA (181 stations)											
MD [ft]	Inclination [°]	Azimuth [°]	TVD [ft]	TVDSS [ft]	Vert Sect [ft]	North [ft]	East [ft]	DLS [°/100ft]	Build Rate [°/100ft]	Turn Rate [°/100ft]	Comments
5074.00	40.600	236.490	5017.92	3802.92	97.40	-33.95	-152.46	7.25	7.08	2.59	
5118.00	40.630	237.070	5051.32	3836.32	106.21	-49.64	-176.42	0.86	0.07	1.32	
5161.00	41.970	235.270	5083.62	3868.62	114.64	-65.44	-199.99	4.16	3.12	-4.19	
5205.00	42.930	231.650	5116.09	3901.09	122.11	-83.12	-223.84	5.97	2.18	-8.23	
5249.00	43.210	230.820	5148.24	3933.24	128.54	-101.94	-247.27	1.44	0.64	-1.89	
5292.00	43.040	230.080	5179.62	3964.62	134.44	-120.65	-269.93	1.24	-0.40	-1.72	
5336.00	42.580	229.200	5211.90	3996.90	140.03	-140.02	-292.71	1.71	-1.05	-2.00	
5380.00	41.640	232.770	5244.55	4029.55	146.21	-158.59	-315.63	5.84	-2.14	8.11	
5423.00	41.070	233.630	5276.82	4061.82	153.24	-175.61	-338.37	1.87	-1.33	2.00	
5467.00	40.920	233.710	5310.03	4095.03	160.62	-192.71	-361.63	0.36	-0.34	0.18	
5511.00	40.450	232.320	5343.40	4128.40	167.63	-209.96	-384.54	2.32	-1.07	-3.16	
5553.00	39.820	231.090	5375.51	4160.51	173.64	-226.74	-405.79	2.41	-1.50	-2.93	
5595.00	40.790	231.130	5407.54	4192.54	179.40	-243.79	-426.93	2.31	2.31	0.10	
5637.00	42.750	231.810	5438.86	4223.86	185.51	-261.22	-448.82	4.79	4.67	1.62	
5681.00	42.690	232.550	5471.19	4256.19	192.38	-279.52	-472.40	1.15	-0.14	1.68	
5723.00	42.740	235.640	5502.05	4287.05	199.86	-296.23	-495.47	4.99	0.12	7.36	
5765.00	42.070	236.810	5533.06	4318.06	208.31	-311.97	-519.01	2.46	-1.60	2.79	
5808.00	41.170	235.670	5565.21	4350.21	216.84	-327.84	-542.76	2.74	-2.09	-2.65	
5852.00	42.250	234.840	5598.06	4383.06	225.09	-344.53	-566.81	2.76	2.45	-1.89	
5895.00	43.520	234.890	5629.56	4414.56	233.16	-361.37	-590.74	2.95	2.95	0.12	
5939.00	42.940	234.790	5661.62	4446.62	241.45	-378.72	-615.38	1.33	-1.32	-0.23	
5982.00	41.660	232.930	5693.43	4478.43	248.94	-395.78	-638.75	4.16	-2.98	-4.33	
6026.00	42.440	235.070	5726.10	4511.10	256.63	-413.10	-662.59	3.71	1.77	4.86	
6070.00	42.680	237.500	5758.51	4543.51	265.54	-429.61	-687.34	3.77	0.55	5.52	
6149.00	41.590	236.530	5817.09	4602.09	282.05	-458.46	-731.80	1.61	-1.38	-1.23	
6212.00	42.080	232.650	5864.04	4649.04	293.42	-482.81	-766.03	4.18	0.78	-6.16	
6273.00	42.290	229.620	5909.25	4694.25	302.12	-508.51	-797.92	3.35	0.34	-4.97	
6335.00	42.630	231.030	5954.99	4739.99	310.43	-535.22	-830.13	1.63	0.55	2.27	
6397.00	42.140	232.550	6000.78	4785.78	319.78	-561.08	-862.97	1.83	-0.79	2.45	
6458.00	42.150	232.510	6046.01	4831.01	329.44	-585.98	-895.45	0.05	0.02	-0.07	

RECEIVED  
Office of Oil and Gas  
NOV - 3 2017  
WV Department of  
Environmental Protection

01/05/2018



Where energy meets innovation.

# Actual Wellpath Report

OXF-155 513067 AWP Proj: 10826'

Page 5 of 10



REFERENCE WELLPATH IDENTIFICATION			
Operator	EQT	Slot	Slot 513067
Area	Doddridge Co., WV	Well	OXF-155 513067
Field	Doddridge	Wellbore	OXF-155 513067 AWB
Facility	OXF-155 Pad		

WELLPATH DATA (181 stations)											
MD [ft]	Inclination [°]	Azimuth [°]	TVD [ft]	TVDSS [ft]	Vert Sect [ft]	North [ft]	East [ft]	DLS [°/100ft]	Build Rate [°/100ft]	Turn Rate [°/100ft]	Comments
6520.00	42.960	232.560	6091.68	4876.68	339.35	-611.48	-928.74	1.31	1.31	0.08	
6581.00	42.970	233.240	6136.32	4921.32	349.43	-636.56	-961.89	0.76	0.02	1.11	
6643.00	42.590	233.700	6181.83	4966.83	360.04	-661.63	-995.73	0.79	-0.61	0.74	KOP 2=6643' MD
6704.00	42.050	241.070	6226.96	5011.96	373.05	-683.74	-1030.27	8.18	-0.89	12.08	
6765.00	41.440	253.470	6272.55	5057.55	392.27	-699.39	-1067.56	13.56	-1.00	20.33	
6796.00	41.160	259.720	6295.85	5080.85	404.77	-704.13	-1087.44	13.33	-0.90	20.16	
6827.00	42.000	264.600	6319.04	5104.04	418.87	-706.93	-1107.81	10.79	2.71	15.74	
6858.00	43.940	268.640	6341.73	5126.73	434.51	-708.16	-1128.90	10.86	6.26	13.03	
6889.00	46.370	271.800	6363.59	5148.59	451.68	-708.07	-1150.87	10.66	7.84	10.19	
6920.00	48.770	274.380	6384.51	5169.51	470.25	-706.82	-1173.71	9.88	7.74	8.32	
6950.00	50.260	275.620	6403.99	5188.99	489.19	-704.83	-1196.44	5.88	4.97	4.13	
6981.00	51.160	276.900	6423.62	5208.62	509.40	-702.21	-1220.29	4.32	2.90	4.13	
7012.00	51.740	278.070	6442.94	5227.94	530.10	-699.06	-1244.32	3.49	1.87	3.77	
7042.00	51.830	280.510	6461.50	5246.50	550.59	-695.25	-1267.58	6.40	0.30	8.13	
7073.00	51.390	283.420	6480.75	5265.75	572.26	-690.22	-1291.35	7.49	-1.42	9.39	
7104.00	51.110	287.750	6500.16	5285.16	594.45	-683.73	-1314.63	10.93	-0.90	13.97	
7134.00	52.040	292.120	6518.81	5303.81	616.68	-675.71	-1336.71	11.82	3.10	14.57	
7165.00	54.290	297.660	6537.40	5322.40	640.74	-665.26	-1359.19	16.04	7.26	17.87	
7196.00	56.440	302.550	6555.03	5340.03	665.94	-652.46	-1381.24	14.71	6.94	15.77	
7227.00	59.690	306.090	6571.43	5356.43	692.15	-637.62	-1402.95	14.27	10.48	11.42	
7258.00	63.600	307.990	6586.15	5371.15	719.41	-621.19	-1424.71	13.72	12.61	6.13	
7288.00	67.010	309.730	6598.68	5383.68	746.66	-604.08	-1445.93	12.53	11.37	5.80	
7319.00	70.060	311.370	6610.02	5395.02	775.50	-585.33	-1467.85	11.00	9.84	5.29	
7350.00	72.880	313.010	6619.87	5404.87	804.84	-565.59	-1489.62	10.39	9.10	5.29	
7381.00	74.860	314.060	6628.49	5413.49	834.52	-545.08	-1511.20	7.17	6.39	3.39	
7413.00	74.840	314.300	6636.85	5421.85	865.27	-523.55	-1533.36	0.73	-0.06	0.75	
7444.00	74.860	315.040	6644.95	5429.95	895.04	-502.51	-1554.64	2.31	0.06	2.39	
7474.00	75.760	317.800	6652.56	5437.56	923.80	-481.49	-1574.64	9.39	3.00	9.20	
7505.00	78.280	321.100	6659.53	5444.53	953.49	-458.54	-1594.27	13.18	8.13	10.65	
7536.00	80.100	324.410	6665.34	5450.34	983.04	-434.31	-1612.69	12.02	5.87	10.68	

RECEIVED  
Office of Oil and Gas  
NOV - 3 2017  
WV Department of  
Environmental Protection

01/05/2018



# Actual Wellpath Report

OXF-155 513067 AWP Proj: 10826'

Page 6 of 10



Where energy meets innovation.

REFERENCE WELLPATH IDENTIFICATION			
Operator	EQT	Slot	Slot 513067
Area	Doddridge Co., WV	Well	OXF-155 513067
Field	Doddridge	Wellbore	OXF-155 513067 AWB
Facility	OXF-155 Pad		

WELLPATH DATA (181 stations) † = interpolated/extrapolated station											
MD [ft]	Inclination [°]	Azimuth [°]	TVD [ft]	TVDSS [ft]	Vert Sect [ft]	North [ft]	East [ft]	DLS [°/100ft]	Build Rate [°/100ft]	Turn Rate [°/100ft]	Comments
7567.00	81.720	327.530	6670.24	5455.24	1012.30	-408.94	-1629.82	11.23	5.23	10.06	
7598.00	83.060	330.930	6674.35	5459.35	1041.10	-382.54	-1645.53	11.70	4.32	10.97	
7630.00	84.360	333.390	6677.85	5462.85	1070.31	-354.42	-1660.38	8.65	4.06	7.69	
7661.00	86.270	334.700	6680.38	5465.38	1098.27	-326.64	-1673.91	7.46	6.16	4.23	
7692.00	86.950	335.720	6682.22	5467.22	1126.00	-298.55	-1686.88	3.95	2.19	3.29	
7723.00	88.150	336.500	6683.54	5468.54	1153.54	-270.23	-1699.42	4.62	3.87	2.52	LP=7723' MD / 6683.54' TVD
7753.00	88.490	336.800	6684.42	5469.42	1180.07	-242.70	-1711.31	1.51	1.13	1.00	
7784.00	89.420	336.850	6684.99	5469.99	1207.45	-214.21	-1723.51	3.00	3.00	0.16	
7815.00	89.690	336.270	6685.23	5470.23	1234.90	-185.77	-1735.84	2.06	0.87	-1.87	
7844.57†	90.000	335.941	6685.31	5470.31	1261.19	-158.73	-1747.81	1.53	1.05	-1.11	Deepest Point of Well=7844.57' MD / 6685.31' TVD
7877.00	90.340	335.580	6685.21	5470.21	1290.11	-129.16	-1761.13	1.53	1.05	-1.11	
7940.00	90.920	335.380	6684.52	5469.52	1346.43	-71.84	-1787.27	0.97	0.92	-0.32	
8002.00	90.430	335.820	6683.79	5468.79	1401.80	-15.39	-1812.88	1.06	-0.79	0.71	
8041.00	91.110	337.650	6683.26	5468.26	1436.28	20.44	-1828.29	5.01	1.74	4.69	
8064.00	91.940	339.800	6682.65	5467.65	1456.22	41.86	-1836.63	10.02	3.61	9.35	
8126.00	91.910	338.060	6680.57	5465.57	1509.85	99.68	-1858.90	2.81	-0.05	-2.81	
8189.00	91.910	332.010	6678.47	5463.47	1566.33	156.74	-1885.47	9.60	0.00	-9.60	
8251.00	92.030	329.680	6676.34	5461.34	1623.79	210.85	-1915.65	3.76	0.19	-3.76	
8312.00	91.660	329.090	6674.37	5459.37	1680.89	263.32	-1946.70	1.14	-0.61	-0.97	
8374.00	91.480	327.970	6672.67	5457.67	1739.25	316.18	-1979.05	1.83	-0.29	-1.81	
8437.00	90.950	327.870	6671.34	5456.34	1798.79	369.54	-2012.51	0.86	-0.84	-0.16	
8498.00	91.170	331.660	6670.21	5455.21	1855.76	422.23	-2043.21	6.22	0.36	6.21	
8559.00	91.200	335.480	6668.95	5453.95	1911.15	476.83	-2070.35	6.26	0.05	6.26	
8621.00	91.970	335.780	6667.23	5452.23	1966.49	533.28	-2095.93	1.33	1.24	0.48	
8682.00	93.730	334.720	6664.20	5449.20	2021.07	588.61	-2121.43	3.37	2.89	-1.74	
8744.00	94.310	332.550	6659.85	5444.85	2077.23	644.02	-2148.89	3.61	0.94	-3.50	
8805.00	91.230	329.750	6656.90	5441.90	2133.59	697.37	-2178.29	6.82	-5.05	-4.59	
8867.00	91.170	329.580	6655.61	5440.61	2191.54	750.87	-2209.59	0.29	-0.10	-0.27	
8929.00	90.890	331.040	6654.49	5439.49	2249.24	804.72	-2240.30	2.40	-0.45	2.35	
8990.00	91.170	331.690	6653.39	5438.39	2305.59	858.25	-2269.53	1.16	0.46	1.07	

RECEIVED  
Office of Oil and Gas  
NOV - 3 2017  
WV Department of  
Environmental Protection

01/05/2018



# Actual Wellpath Report

OXF-155 513067 AWP Proj: 10826'

Page 7 of 10



Where energy meets innovation.

REFERENCE WELLPATH IDENTIFICATION			
Operator	EQT	Slot	Slot 513067
Area	Doddridge Co., WV	Well	OXF-155 513067
Field	Doddridge	Wellbore	OXF-155 513067 AWB
Facility	OXF-155 Pad		

WELLPATH DATA (181 stations)											
MD (ft)	Inclination [°]	Azimuth [°]	TVD (ft)	TVDSS (ft)	Vert Sect (ft)	North (ft)	East (ft)	DLS [°/100ft]	Build Rate [°/100ft]	Turn Rate [°/100ft]	Comments
9052.00	91.910	330.400	6651.73	5436.73	2362.98	912.48	-2299.53	2.40	1.19	-2.08	
9114.00	91.350	329.280	6649.96	5434.96	2420.85	966.07	-2330.67	2.02	-0.90	-1.81	
9177.00	90.280	331.330	6649.07	5434.07	2479.48	1020.78	-2361.87	3.67	-1.70	3.25	
9239.00	90.740	333.730	6648.52	5433.52	2536.27	1075.79	-2390.47	3.94	0.74	3.87	
9301.00	90.770	334.310	6647.70	5432.70	2592.38	1131.52	-2417.62	0.94	0.05	0.94	
9364.00	90.580	335.020	6646.96	5431.96	2649.10	1188.45	-2444.58	1.17	-0.30	1.13	
9425.00	90.740	335.480	6646.25	5431.25	2703.75	1243.85	-2470.12	0.80	0.26	0.75	
9487.00	91.230	335.880	6645.19	5430.19	2759.07	1300.33	-2495.65	1.02	0.79	0.65	
9548.00	91.320	335.000	6643.83	5428.83	2813.62	1355.80	-2520.99	1.45	0.15	-1.44	
9611.00	91.790	334.910	6642.12	5427.12	2870.18	1412.86	-2547.65	0.76	0.75	-0.14	
9673.00	91.850	334.700	6640.15	5425.15	2925.91	1468.93	-2574.03	0.35	0.10	-0.34	
9735.00	91.880	332.630	6638.13	5423.13	2982.16	1524.46	-2601.52	3.34	0.05	-3.34	
9795.00	91.660	333.210	6636.28	5421.28	3036.92	1577.86	-2628.82	1.03	-0.37	0.97	
9856.00	91.690	334.220	6634.50	5419.50	3092.25	1632.53	-2655.82	1.66	0.05	1.66	
9916.00	91.110	333.320	6633.03	5418.03	3146.66	1686.33	-2682.33	1.78	-0.97	-1.50	
9977.00	91.230	330.960	6631.79	5416.79	3202.68	1740.25	-2710.83	3.87	0.20	-3.87	
10037.00	91.080	329.320	6630.58	5415.58	3258.58	1792.27	-2740.70	2.74	-0.25	-2.73	
10098.00	90.710	329.980	6629.62	5414.62	3315.60	1844.90	-2771.52	1.24	-0.61	1.08	
10158.00	90.490	332.840	6629.00	5414.00	3371.01	1897.58	-2800.22	4.78	-0.37	4.77	
10219.00	90.580	334.300	6628.43	5413.43	3426.43	1952.20	-2827.37	2.40	0.15	2.39	
10280.00	91.350	332.290	6627.40	5412.40	3481.96	2006.68	-2854.78	3.53	1.26	-3.30	
10342.00	92.030	331.210	6625.57	5410.57	3539.05	2061.27	-2884.11	2.06	1.10	-1.74	
10403.00	91.110	333.310	6623.90	5408.90	3595.01	2115.24	-2912.49	3.76	-1.51	3.44	
10465.00	91.540	337.970	6622.46	5407.46	3650.34	2171.69	-2938.05	7.55	0.69	7.52	
10526.00	91.450	337.560	6620.87	5405.87	3703.73	2228.13	-2961.13	0.69	-0.15	-0.67	
10587.00	91.420	334.570	6619.34	5404.34	3757.96	2283.86	-2985.87	4.90	-0.05	-4.90	
10649.00	92.460	333.430	6617.25	5402.25	3814.06	2339.55	-3013.03	2.49	1.68	-1.84	
10710.00	92.520	332.010	6614.60	5399.60	3869.80	2393.72	-3040.96	2.33	0.10	-2.33	
10773.00	90.830	330.880	6612.75	5397.75	3927.94	2449.03	-3071.06	3.23	-2.68	-1.79	
10802.00	91.050	330.710	6612.28	5397.28	3954.84	2474.34	-3085.21	0.96	0.76	-0.59	Final Survey=10802' MD / 6612.28' TVD

RECEIVED  
Office of Oil and Gas  
NOV - 3 2017  
WV Department of  
Environmental Protection

01/05/2018



# Actual Wellpath Report

OXF-155 513067 AWP Proj: 10826'

Page 8 of 10



Where energy meets innovation.

REFERENCE WELLPATH IDENTIFICATION			
Operator	EQT	Slot	Slot 513067
Area	Doddridge Co., WV	Well	OXF-155 513067
Field	Doddridge	Wellbore	OXF-155 513067 AWB
Facility	OXF-155 Pad		

WELLPATH DATA (181 stations)											
MD	Inclination	Azimuth	TVD	TVDSS	Vert Sect	North	East	DLS	Build Rate	Turn Rate	Comments
[ft]	[°]	[°]	[ft]	[ft]	[ft]	[ft]	[ft]	[°/100ft]	[°/100ft]	[°/100ft]	
10826.00	91.050	330.710	6611.84	5396.84	3977.11	2495.27	-3096.95	0.00	0.00	0.00	Projection to TD=10826' MD / 6611.84' TVD

HOLE & CASING SECTIONS										
- Ref Wellbore: OXF-155 513067 AWB      Ref Wellpath: OXF-155 513067 AWP Proj: 10826'										
String/Diameter	Start MD	End MD	Interval	Start TVD	End TVD	Start N/S	Start E/W	End N/S	End E/W	
	[ft]	[ft]	[ft]	[ft]	[ft]	[ft]	[ft]	[ft]	[ft]	[ft]
20in Conductor	16.00	56.00	40.00	16.00	56.00	0.00	0.00	0.08	-0.06	
17.5in Open Hole	56.00	572.00	516.00	56.00	571.99	0.08	-0.06	0.93	0.37	
13.375in Casing Surface	16.00	572.00	556.00	16.00	571.99	0.00	0.00	0.93	0.37	
12.25in Open Hole	572.00	3469.00	2897.00	571.99	3467.70	0.93	0.37	50.58	40.34	
9.625in Casing Intermediate	16.00	3469.00	3453.00	16.00	3467.70	0.00	0.00	50.58	40.34	
8.75in Open Hole	3469.00	6141.00	2672.00	3467.70	5811.12	50.58	40.34	-455.54	-727.36	
8.5in Open Hole	6141.00	10826.00	4685.00	5811.12	6611.84	-455.54	-727.36	2495.27	-3096.95	
5.5in Casing Production	16.00	10826.00	10810.00	16.00	6611.84	0.00	0.00	2495.27	-3096.95	

RECEIVED  
Office of Oil and Gas  
NOV - 3 2017  
WV Department of  
Environmental Protection

01/05/2018





# Actual Wellpath Report

OXF-155 513067 AWP Proj: 10826'

Page 9 of 10



Where energy meets innovation.

REFERENCE WELLPATH IDENTIFICATION			
Operator	EQT	Slot	Slot 513067
Area	Doddridge Co., WV	Well	OXF-155 513067
Field	Doddridge	Wellbore	OXF-155 513067 AWB
Facility	OXF-155 Pad		

TARGETS								
Name	TVD [ft]	North [ft]	East [ft]	Grid East [US ft]	Grid North [US ft]	Latitude	Longitude	Shape
OXF-155 513067 LP Plat	6665.00	-419.21	-1611.31	1627233.93	262160.51	39°12'44.249"N	80°48'56.156"W	point
OXF-155 513067 BHL Rev-2	6675.00	2496.38	-3096.86	1625748.43	265076.00	39°13'12.848"N	80°49'15.571"W	point
OXF-155 513067 LP Rev-2	6675.00	-352.38	-1645.36	1627199.88	262227.34	39°12'44.904"N	80°48'56.601"W	point
OXF-155 Hard Line	7000.00	-44.44	-7.06	1628838.12	262535.27	39°12'48.184"N	80°48'35.846"W	polygon

WELLPATH COMPOSITION - Ref Wellbore: OXF-155 513067 AWB Ref Wellpath: OXF-155 513067 AWP Proj: 10826'				
Start MD [ft]	End MD [ft]	Positional Uncertainty Model	Log Name/Comment	Wellbore
16.00	4467.00	Gyrodata standard - Drop gyro or Multi-shot	01_Gyrodata MS Gyro <8-3/4"> (103'-4467')	OXF-155 513067 AWB
4467.00	6070.00	OWSG MWD rev2 - Standard	02_SDI MWD <8-3/4"> (4467')(4472'-6070')	OXF-155 513067 AWB
6070.00	10802.00	BHI AutoTrak Curve (Short)	03_BHI AT Curve <8-1/2"> (6070')(6149'-10802')	OXF-155 513067 AWB
10802.00	10826.00	Blind Drilling (std)	Projection to bit	OXF-155 513067 AWB

RECEIVED  
Office of Oil and Gas  
NOV - 3 2017  
WV Department of  
Environmental Protection

01/05/2018



# Actual Wellpath Report

OXF-155 513067 AWP Proj: 10826'

Page 10 of 10



Where energy meets innovation.

REFERENCE WELLPATH IDENTIFICATION			
Operator	EQT	Slot	Slot 513067
Area	Doddridge Co., WV	Well	OXF-155 513067
Field	Doddridge	Wellbore	OXF-155 513067 AWB
Facility	OXF-155 Pad		

WELLPATH COMMENTS				
MD [ft]	Inclination [°]	Azimuth [°]	TVD [ft]	Comment
4467.00	1.090	280.960	4465.49	Gyro Tie In=4467' MD
4472.00	1.010	280.630	4470.49	KOP 1=4472' MD
6643.00	42.590	233.700	6181.83	KOP 2=6643' MD
7723.00	88.150	336.500	6683.54	LP=7723' MD / 6683.54' TVD
7844.57	90.000	335.941	6685.31	Deepest Point of Well=7844.57' MD / 6685.31' TVD
10802.00	91.050	330.710	6612.28	Final Survey=10802' MD / 6612.28' TVD
10826.00	91.050	330.710	6611.84	Projection to TD=10826' MD / 6611.84' TVD

RECEIVED  
Office of Oil and Gas

NOV - 3 2017

WV Department of  
Environmental Protection

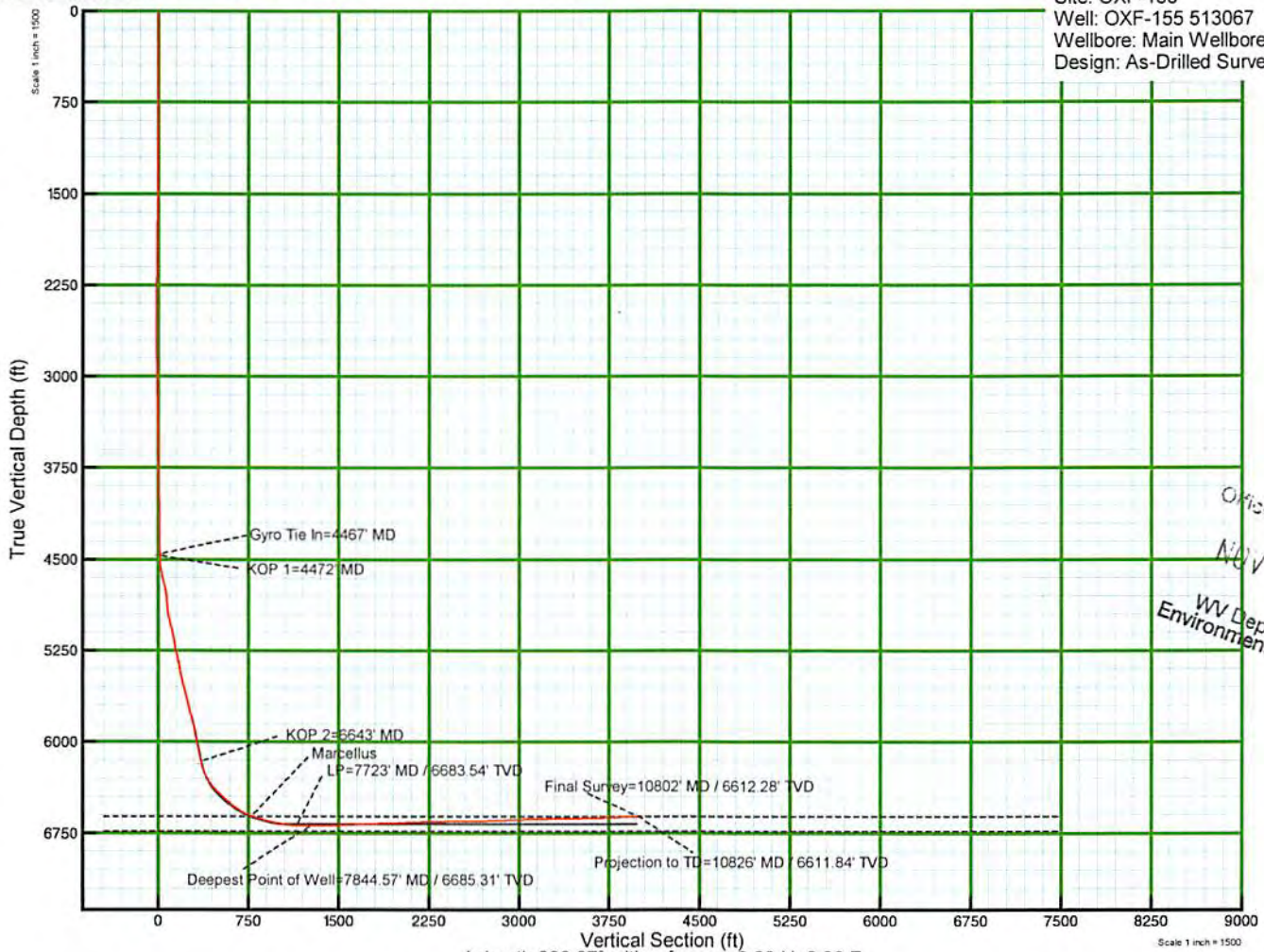
01/05/2018



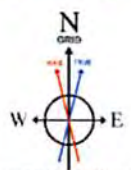
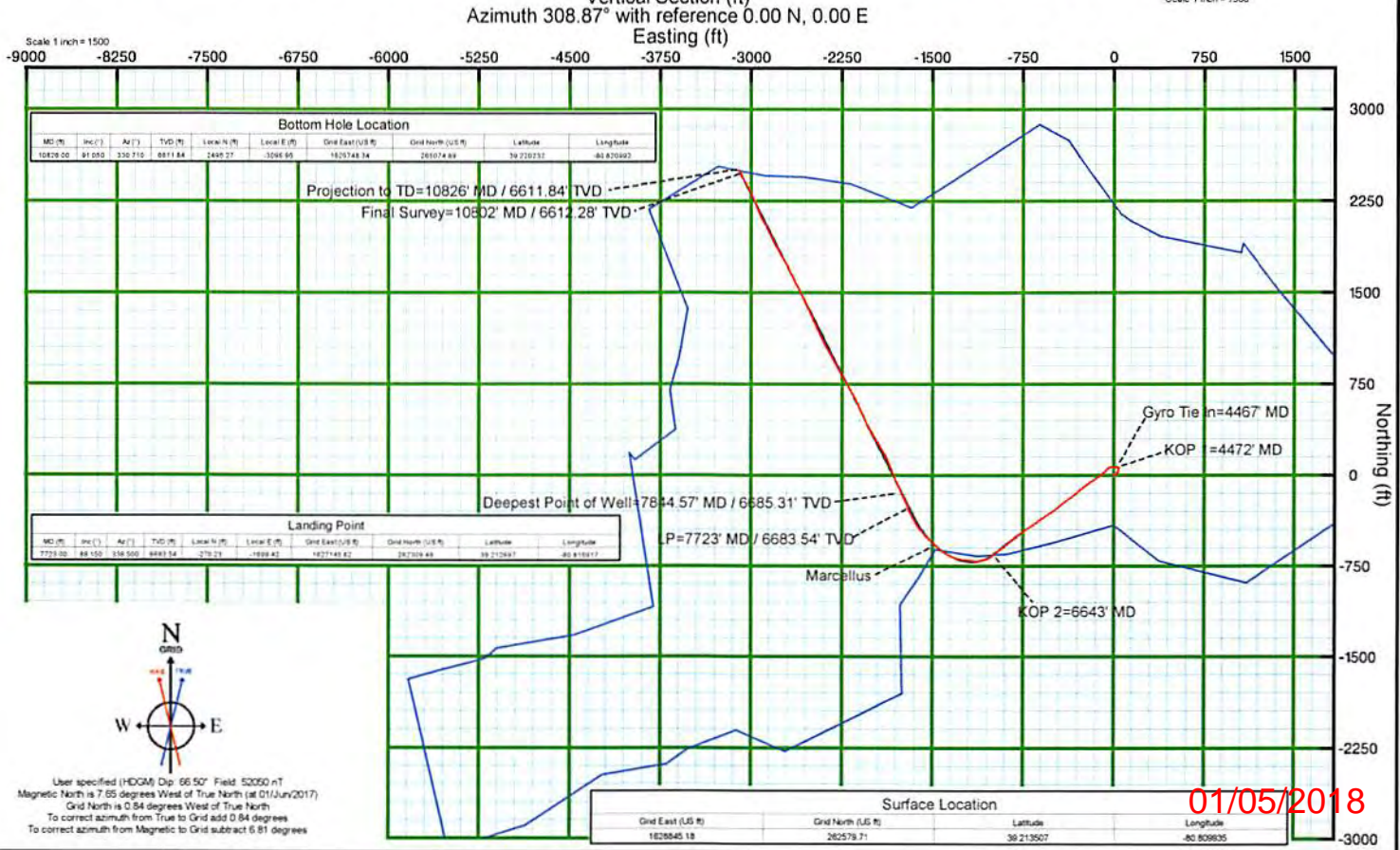
KB Elevation=1215 FT  
 Ground Elevation=1199 FT  
 All measurements were taken from KB Elevation

# EQT Production - Marcellus

Project: Doddridge County, WV  
 Site: OXF-155  
 Well: OXF-155 513067  
 Wellbore: Main Wellbore  
 Design: As-Drilled Surveys



RECEIVED  
 Office of Oil and Gas  
 NOV - 3 2017  
 WV Department of  
 Environmental Protection



User specified (HDGM) Dip: 66.50° Field: 52050 nT  
 Magnetic North is 7.55 degrees West of True North (at 01/Jan/2017)  
 Grid North is 0.84 degrees West of True North  
 To correct azimuth from True to Grid add 0.84 degrees  
 To correct azimuth from Magnetic to Grid subtract 6.81 degrees

Surface Location			
Grid East (US ft)	Grid North (US ft)	Latitude	Longitude
1820840.18	262579.71	39.713507	-80.808635

01/05/2018