



Actual Wellpath Report

OXF-155 513068 AWP Proj: 10183'

Page 1 of 10



Where energy meets innovation.

REFERENCE WELLPATH IDENTIFICATION			
Operator	EQT	Slot	Slot 513068
Area	Doddridge Co., WV	Well	OXF-155 513068
Field	Doddridge	Wellbore	OXF-155 513068 AWB
Facility	OXF-155 Pad		API: 47-017--06759

REPORT SETUP INFORMATION			
Projection System	NAD27 / Lambert West Virginia SP, Northern Zone (4701), US feet	Software System	WellArchitect® 5.0
North Reference	Grid	User	Edsaryar
Scale	0.999966	Report Generated	11/Jul/2017 at 15:12
Convergence at slot	0.84° West	Database/Source file	WA_MPL_EASTERNUS_Defn/OXF-155_513068_AWP_Proj_10183_.xml

WELLPATH LOCATION						
	Local coordinates		Grid coordinates		Geographic coordinates	
	North[ft]	East[ft]	Easting[US ft]	Northing[US ft]	Latitude	Longitude
Slot Location	59.26	9.42	1628847.54	262594.53	39°12'48.771"N	80°48'35.737"W
Facility Reference Pt			1628838.12	262535.27	39°12'48.184"N	80°48'35.846"W
Field Reference Pt			0.00	0.00	38°17'12.460"N	86°28'23.077"W

WELLPATH DATUM			
Calculation method	Minimum curvature	Savanna 655 (RKB) to Facility Vertical Datum	1215.00ft
Horizontal Reference Pt	Slot	Savanna 655 (RKB) to Mean Sea Level	1215.00ft
Vertical Reference Pt	Savanna 655 (RKB)	Savanna 655 (RKB) to Mud Line at Slot (Slot 513068)	16.00ft
MD Reference Pt	Savanna 655 (RKB)	Section Origin	N 0.00, E 0.00 ft
Field Vertical Reference	Mean Sea Level	Section Azimuth	317.81°

01/05/2018



Actual Wellpath Report

OXF-155 513068 AWP Proj: 10183'

Page 2 of 10



Where energy meets innovation.

REFERENCE WELLPATH IDENTIFICATION			
Operator	EQT	Slot	Slot 513068
Area	Doddridge Co., WV	Well	OXF-155 513068
Field	Doddridge	Wellbore	OXF-155 513068 AWB
Facility	OXF-155 Pad		

WELLPATH DATA (170 stations) † = interpolated/extrapolated station

MD [ft]	Inclination [°]	Azimuth [°]	TVD [ft]	TVDSS [ft]	Vert Sect [ft]	North [ft]	East [ft]	DLS [°/100ft]	Build Rate [°/100ft]	Turn Rate [°/100ft]	Comments
0.00†	0.000	270.980	0.00	-1215.00	0.00	0.00	0.00	0.00	0.00	0.00	
16.00	0.000	270.980	16.00	-1199.00	0.00	0.00	0.00	0.00	0.00	0.00	
103.00	0.460	270.980	103.00	-1112.00	0.24	0.01	-0.35	0.53	0.53	-102.32	
203.00	0.130	238.580	203.00	-1012.00	0.53	-0.05	-0.85	0.36	-0.33	-32.40	
303.00	0.050	160.640	303.00	-912.00	0.52	-0.15	-0.93	0.13	-0.08	-77.94	
403.00	0.050	82.970	403.00	-812.00	0.45	-0.18	-0.87	0.06	0.00	-77.67	
503.00	0.090	91.300	503.00	-712.00	0.37	-0.18	-0.75	0.04	0.04	8.33	
603.00	0.070	120.110	603.00	-612.00	0.26	-0.21	-0.62	0.04	-0.02	28.81	
703.00	0.040	302.170	703.00	-512.00	0.23	-0.22	-0.60	0.11	-0.03	-177.94	
803.00	0.070	41.690	803.00	-412.00	0.27	-0.16	-0.58	0.09	0.03	99.52	
903.00	0.160	29.180	903.00	-312.00	0.33	0.01	-0.48	0.09	0.09	-12.51	
1003.00	0.290	48.610	1003.00	-212.00	0.37	0.30	-0.22	0.15	0.13	19.43	
1103.00	0.270	50.390	1103.00	-112.00	0.35	0.62	0.15	0.02	-0.02	1.78	
1203.00	0.350	67.320	1202.99	-12.01	0.24	0.88	0.62	0.12	0.08	16.93	
1303.00	0.530	100.740	1302.99	87.99	-0.23	0.91	1.35	0.31	0.18	33.42	
1403.00	0.560	98.770	1402.99	187.99	-0.98	0.75	2.29	0.04	0.03	-1.97	
1503.00	0.660	85.160	1502.98	287.98	-1.71	0.73	3.35	0.18	0.10	-13.61	
1603.00	0.710	83.550	1602.97	387.97	-2.42	0.85	4.54	0.05	0.05	-1.61	
1703.00	0.690	84.630	1702.97	487.97	-3.14	0.97	5.75	0.02	-0.02	1.08	
1803.00	0.620	66.500	1802.96	587.96	-3.68	1.24	6.85	0.22	-0.07	-18.13	
1903.00	0.630	65.670	1902.95	687.95	-4.02	1.69	7.84	0.01	0.01	-0.83	
2003.00	0.470	71.300	2002.95	787.95	-4.35	2.04	8.73	0.17	-0.16	5.63	
2103.00	0.480	71.300	2102.95	887.95	-4.68	2.31	9.52	0.01	0.01	0.00	
2203.00	0.450	77.100	2202.94	987.94	-5.04	2.53	10.30	0.06	-0.03	5.80	
2303.00	0.420	81.830	2302.94	1087.94	-5.44	2.67	11.04	0.05	-0.03	4.73	
2403.00	0.450	81.460	2402.94	1187.94	-5.86	2.78	11.80	0.03	0.03	-0.37	
2503.00	0.450	79.780	2502.93	1287.93	-6.29	2.91	12.57	0.01	0.00	-1.68	
2603.00	0.480	79.880	2602.93	1387.93	-6.72	3.05	13.37	0.03	0.03	0.10	
2703.00	0.480	65.410	2702.93	1487.93	-7.07	3.30	14.16	0.12	0.00	-14.47	
2803.00	0.520	63.160	2802.92	1587.92	-7.31	3.68	14.95	0.04	0.04	-2.25	



Actual Wellpath Report

OXF-155 513068 AWP Proj: 10183'

Page 3 of 10



Where energy meets innovation.

REFERENCE WELLPATH IDENTIFICATION			
Operator	EQT	Slot	Slot 513068
Area	Doddridge Co., WV	Well	OXF-155 513068
Field	Doddridge	Wellbore	OXF-155 513068 AWB
Facility	OXF-155 Pad		

WELLPATH DATA (170 stations) † = interpolated/extrapolated station											
MD [ft]	Inclination [°]	Azimuth [°]	TVD [ft]	TVDSS [ft]	Vert Sect [ft]	North [ft]	East [ft]	DLS [°/100ft]	Build Rate [°/100ft]	Turn Rate [°/100ft]	Comments
2903.00	0.500	61.040	2902.92	1687.92	-7.53	4.10	15.74	0.03	-0.02	-2.12	
3003.00	0.560	62.710	3002.91	1787.91	-7.76	4.53	16.55	0.06	0.06	1.67	
3103.00	0.660	57.680	3102.91	1887.91	-7.98	5.06	17.47	0.11	0.10	-5.03	
3203.00	0.690	58.180	3202.90	1987.90	-8.19	5.69	18.47	0.03	0.03	0.50	
3303.00	0.730	57.680	3302.89	2087.89	-8.41	6.35	19.52	0.04	0.04	-0.50	
3403.00	0.640	57.500	3402.89	2187.89	-8.61	6.99	20.53	0.09	-0.09	-0.18	
3503.00	0.560	42.370	3502.88	2287.88	-8.66	7.65	21.33	0.18	-0.08	-15.13	
3603.00	0.410	35.380	3602.88	2387.88	-8.53	8.30	21.87	0.16	-0.15	-6.99	
3703.00	0.170	45.510	3702.88	2487.88	-8.45	8.70	22.18	0.24	-0.24	10.13	
3803.00	0.060	23.500	3802.88	2587.88	-8.42	8.85	22.31	0.12	-0.11	-22.01	
3903.00	0.100	261.210	3902.88	2687.88	-8.35	8.88	22.24	0.14	0.04	-122.29	
4003.00	0.280	271.490	4002.88	2787.88	-8.14	8.88	21.91	0.18	0.18	10.28	
4103.00	0.290	266.370	4102.87	2887.87	-7.81	8.87	21.41	0.03	0.01	-5.12	
4203.00	0.500	263.610	4202.87	2987.87	-7.40	8.80	20.73	0.21	0.21	-2.76	
4303.00	0.550	264.530	4302.87	3087.87	-6.86	8.71	19.82	0.05	0.05	0.92	
4403.00	0.650	270.090	4402.86	3187.86	-6.19	8.66	18.77	0.12	0.10	5.56	
4503.00	0.930	284.420	4502.85	3287.85	-5.13	8.87	17.42	0.34	0.28	14.33	
4603.00	1.140	284.660	4602.84	3387.84	-3.62	9.32	15.67	0.21	0.21	0.24	
4703.00	1.290	288.100	4702.81	3487.81	-1.81	9.92	13.64	0.17	0.15	3.44	
4803.00	1.530	287.890	4802.78	3587.78	0.33	10.68	11.30	0.24	0.24	-0.21	
4897.00	1.460	288.280	4896.75	3681.75	2.46	11.44	8.97	0.08	-0.07	0.41	Gyro Tie In=4897' MD
4909.99	1.260	283.390	4909.74	3694.74	2.72	11.53	8.67	1.78	-1.54	-37.64	
4910.00†	1.260	283.373	4909.75	3694.75	2.72	11.53	8.67	4.93	3.16	-171.93	KOP 1=4910' MD
4954.00	3.130	251.260	4953.72	3738.72	3.60	11.25	7.06	4.93	4.25	-72.98	
4998.00	7.720	244.670	4997.51	3782.51	4.93	9.60	3.25	10.51	10.43	-14.98	
5042.00	12.410	238.240	5040.82	3825.82	6.65	5.85	-3.45	10.94	10.66	-14.61	
5085.00	16.040	230.040	5082.50	3867.50	7.71	-0.40	-11.93	9.64	8.44	-19.07	
5129.00	18.760	223.970	5124.48	3909.48	7.48	-9.40	-21.51	7.42	6.18	-13.80	
5173.00	20.570	218.400	5165.92	3950.92	5.74	-20.55	-31.22	5.92	4.11	-12.66	
5216.00	20.440	213.980	5206.20	3991.20	2.71	-32.70	-40.11	3.61	-0.30	-10.28	



Actual Wellpath Report

OXF-155 513068 AWP Proj: 10183'

Page 4 of 10



Where energy meets innovation.

REFERENCE WELLPATH IDENTIFICATION			
Operator	EQT	Slot	Slot 513068
Area	Doddridge Co., WV	Well	OXF-155 513068
Field	Doddridge	Wellbore	OXF-155 513068 AWB
Facility	OXF-155 Pad		

WELLPATH DATA (170 stations)											
MD [ft]	Inclination [°]	Azimuth [°]	TVD [ft]	TVDSS [ft]	Vert Sect [ft]	North [ft]	East [ft]	DLS [°/100ft]	Build Rate [°/100ft]	Turn Rate [°/100ft]	Comments
5260.00	20.420	207.460	5247.44	4032.44	-1.80	-45.88	-47.94	5.17	-0.05	-14.82	
5304.00	21.820	200.450	5288.49	4073.49	-8.23	-60.36	-54.34	6.56	3.18	-15.93	
5347.00	25.580	194.670	5327.86	4112.86	-16.98	-76.84	-59.49	10.27	8.74	-13.44	
5391.00	29.330	188.950	5366.90	4151.90	-28.94	-96.68	-63.57	10.41	8.52	-13.00	
5435.00	32.290	186.990	5404.69	4189.69	-43.39	-119.00	-66.68	7.10	6.73	-4.45	
5478.00	36.450	185.810	5440.17	4225.17	-59.45	-143.12	-69.37	9.80	9.67	-2.74	
5521.00	40.530	187.590	5473.82	4258.82	-77.03	-169.68	-72.51	9.83	9.49	4.14	
5563.00	43.770	189.730	5504.96	4289.96	-94.80	-197.54	-76.77	8.44	7.71	5.10	
5605.00	44.760	192.270	5535.04	4320.04	-112.36	-226.31	-82.37	4.83	2.36	6.05	
5649.00	44.210	191.460	5566.43	4351.43	-130.46	-256.48	-88.71	1.80	-1.25	-1.84	
5693.00	43.880	192.780	5598.06	4383.06	-148.30	-286.39	-95.13	2.22	-0.75	3.00	
5736.00	42.780	192.320	5629.34	4414.34	-165.34	-315.19	-101.54	2.66	-2.56	-1.07	
5780.00	42.290	195.480	5661.76	4446.76	-181.93	-344.06	-108.68	4.98	-1.11	7.18	
5822.00	42.820	199.760	5692.71	4477.71	-196.20	-371.11	-117.28	7.01	1.26	10.19	
5864.00	43.180	200.130	5723.42	4508.42	-209.59	-398.04	-127.05	1.05	0.86	0.88	
5907.00	42.040	199.610	5755.07	4540.07	-223.23	-425.42	-136.95	2.77	-2.65	-1.21	
5950.00	41.440	196.250	5787.16	4572.16	-237.48	-452.64	-145.76	5.39	-1.40	-7.81	
5994.00	40.630	191.480	5820.36	4605.36	-253.59	-480.67	-152.69	7.35	-1.84	-10.84	
6038.00	39.860	190.930	5853.94	4638.94	-270.54	-508.55	-158.22	1.93	-1.75	-1.25	
6062.00	39.140	188.830	5872.46	4657.46	-279.92	-523.59	-160.84	6.32	-3.00	-8.75	
6085.00	38.810	188.620	5890.34	4675.34	-289.04	-537.89	-163.03	1.55	-1.43	-0.91	
6117.00	38.340	187.630	5915.36	4700.36	-301.78	-557.64	-165.85	2.42	-1.47	-3.09	
6146.00	37.940	187.720	5938.17	4723.17	-313.33	-575.39	-168.24	1.39	-1.38	0.31	KOP 2=6146' MD
6178.00	36.600	192.690	5963.64	4748.64	-325.15	-594.45	-171.66	10.29	-4.19	15.53	
6207.00	35.630	198.050	5987.07	4772.07	-334.32	-610.92	-176.18	11.39	-3.34	18.48	
6239.00	34.170	205.240	6013.33	4798.33	-342.40	-627.92	-182.90	13.63	-4.56	22.47	
6269.00	32.570	212.110	6038.39	4823.39	-347.82	-642.39	-190.79	13.67	-5.33	22.90	
6301.00	31.140	218.280	6065.58	4850.58	-351.53	-656.18	-200.50	11.11	-4.47	19.28	
6332.00	30.760	223.020	6092.17	4877.17	-353.52	-668.27	-210.87	7.96	-1.23	15.29	
6362.00	29.980	230.670	6118.06	4903.06	-353.78	-678.63	-221.91	13.14	-2.60	25.50	



Actual Wellpath Report

OXF-155 513068 AWP Proj: 10183'

Page 5 of 10



Where energy meets innovation.

REFERENCE WELLPATH IDENTIFICATION			
Operator	EQT	Slot	Slot 513068
Area	Doddridge Co., WV	Well	OXF-155 513068
Field	Doddridge	Wellbore	OXF-155 513068 AWB
Facility	OXF-155 Pad		

WELLPATH DATA (170 stations)											
MD [ft]	Inclination [°]	Azimuth [°]	TVD [ft]	TVDSS [ft]	Vert Sect [ft]	North [ft]	East [ft]	DLS [°/100ft]	Build Rate [°/100ft]	Turn Rate [°/100ft]	Comments
6393.00	29.210	238.380	6145.03	4930.03	-352.01	-687.51	-234.35	12.52	-2.48	24.87	
6424.00	29.360	245.220	6172.07	4957.07	-348.34	-694.67	-247.69	10.80	0.48	22.06	
6455.00	30.480	250.260	6198.94	4983.94	-343.07	-700.51	-262.00	8.87	3.61	16.26	
6487.00	31.430	256.130	6226.39	5011.39	-336.01	-705.25	-277.74	9.89	2.97	18.34	
6516.00	30.630	261.550	6251.25	5036.25	-328.32	-708.15	-292.39	10.02	-2.76	18.69	
6548.00	30.640	266.800	6278.79	5063.79	-318.66	-709.80	-308.60	8.36	0.03	16.41	
6580.00	31.540	270.700	6306.19	5091.19	-307.83	-710.15	-325.11	6.89	2.81	12.19	
6611.00	33.840	274.250	6332.28	5117.28	-296.05	-709.42	-341.83	9.66	7.42	11.45	
6642.00	36.600	277.410	6357.61	5142.61	-282.76	-707.58	-359.61	10.67	8.90	10.19	
6673.00	39.280	279.930	6382.05	5167.05	-267.97	-704.70	-378.44	9.98	8.65	8.13	
6703.00	41.650	282.230	6404.88	5189.88	-252.36	-700.95	-397.54	9.34	7.90	7.67	
6734.00	43.800	284.590	6427.65	5212.65	-235.01	-696.06	-417.99	8.65	6.94	7.61	
6765.00	45.190	287.060	6449.77	5234.77	-216.58	-690.13	-438.89	7.16	4.48	7.97	
6797.00	46.940	290.430	6471.97	5256.97	-196.44	-682.72	-460.70	9.35	5.47	10.53	
6828.00	48.900	293.710	6492.75	5277.75	-175.72	-674.07	-482.02	10.08	6.32	10.58	
6859.00	51.220	298.140	6512.65	5297.65	-153.67	-663.67	-503.37	13.27	7.48	14.29	
6890.00	53.630	302.670	6531.56	5316.56	-130.23	-651.23	-524.55	13.95	7.77	14.61	
6921.00	56.280	307.420	6549.37	5334.37	-105.49	-636.65	-545.30	15.18	8.55	15.32	
6952.00	58.690	311.280	6566.03	5351.03	-79.64	-620.07	-565.50	13.06	7.77	12.45	
6983.00	61.290	313.870	6581.54	5366.54	-52.91	-601.91	-585.26	11.08	8.39	8.35	
7014.00	64.060	316.290	6595.77	5380.77	-25.41	-582.41	-604.70	11.31	8.94	7.81	
7046.00	67.020	318.530	6609.02	5394.02	3.71	-560.96	-624.40	11.23	9.25	7.00	
7077.00	70.160	321.190	6620.34	5405.34	32.55	-538.90	-643.00	12.90	10.13	8.58	
7108.00	73.210	323.260	6630.08	5415.08	61.89	-515.64	-661.02	11.70	9.84	6.68	
7139.00	75.700	324.520	6638.39	5423.39	91.58	-491.51	-678.61	8.94	8.03	4.06	
7170.00	78.540	325.950	6645.30	5430.30	121.54	-466.69	-695.84	10.21	9.16	4.61	
7201.00	81.850	328.820	6650.58	5435.58	151.66	-440.96	-712.30	14.04	10.68	9.26	
7233.00	83.490	331.520	6654.66	5439.66	182.66	-413.43	-728.08	9.81	5.12	8.44	
7262.00	83.680	333.230	6657.90	5442.90	210.55	-387.90	-741.45	5.90	0.66	5.90	
7294.00	85.410	334.450	6660.94	5445.94	241.16	-359.31	-755.49	6.61	5.41	3.81	LP=7294' MD / 6660.94' TVD



Actual Wellpath Report

OXF-155 513068 AWP Proj: 10183'

Page 6 of 10



Where energy meets innovation.

REFERENCE WELLPATH IDENTIFICATION			
Operator	EQT	Slot	Slot 513068
Area	Doddridge Co., WV	Well	OXF-155 513068
Field	Doddridge	Wellbore	OXF-155 513068 AWB
Facility	OXF-155 Pad		

WELLPATH DATA (170 stations) † = interpolated/extrapolated station											
MD [ft]	Inclination [°]	Azimuth [°]	TVD [ft]	TVDSS [ft]	Vert Sect [ft]	North [ft]	East [ft]	DLS [°/100ft]	Build Rate [°/100ft]	Turn Rate [°/100ft]	Comments
7325.00	86.090	334.640	6663.24	5448.24	270.77	-331.39	-768.78	2.28	2.19	0.61	
7356.00	86.180	334.700	6665.33	5450.33	300.37	-303.44	-782.01	0.35	0.29	0.19	
7386.00	85.810	334.380	6667.42	5452.42	329.03	-276.42	-794.87	1.63	-1.23	-1.07	
7448.00	85.940	334.290	6671.88	5456.88	388.31	-220.68	-821.66	0.25	0.21	-0.15	
7509.00	85.780	333.670	6676.29	5461.29	446.75	-166.01	-848.35	1.05	-0.26	-1.02	
7570.00	86.710	333.200	6680.28	5465.28	505.36	-111.56	-875.57	1.71	1.52	-0.77	
7632.00	89.850	333.390	6682.14	5467.14	565.08	-56.21	-903.41	5.07	5.06	0.31	
7694.00	89.970	332.110	6682.24	5467.24	624.98	-1.09	-931.80	2.07	0.19	-2.06	
7755.00	90.090	331.540	6682.21	5467.21	684.17	52.68	-960.60	0.95	0.20	-0.93	
7817.00	89.260	330.930	6682.56	5467.56	744.47	107.03	-990.44	1.66	-1.34	-0.98	
7878.00	89.720	330.190	6683.10	5468.10	803.96	160.15	-1020.42	1.43	0.75	-1.21	
7940.00	90.860	330.540	6682.79	5467.79	864.48	214.04	-1051.08	1.92	1.84	0.56	
8002.00	90.980	331.210	6681.79	5466.79	924.87	268.19	-1081.25	1.10	0.19	1.08	
8065.00	90.030	332.050	6681.24	5466.24	986.04	323.62	-1111.18	2.01	-1.51	1.33	
8127.00	88.950	332.670	6681.79	5466.79	1046.05	378.54	-1139.94	2.01	-1.74	1.00	
8189.00	88.580	333.090	6683.13	5468.13	1105.90	433.71	-1168.20	0.90	-0.60	0.68	
8249.44†	90.000	336.467	6683.88	5468.88	1163.69	488.38	-1193.95	6.06	2.35	5.59	Deepest Point of Well=8249.44' MD / 6683.88' TVD
8252.00	90.060	336.610	6683.87	5468.87	1166.12	490.73	-1194.97	6.06	2.35	5.59	
8314.00	90.920	339.030	6683.34	5468.34	1224.37	548.13	-1218.37	4.14	1.39	3.90	
8375.00	90.950	337.600	6682.35	5467.35	1281.49	604.81	-1240.91	2.34	0.05	-2.34	
8436.00	90.950	335.420	6681.34	5466.34	1339.26	660.74	-1265.21	3.57	0.00	-3.57	
8499.00	90.770	332.630	6680.39	5465.39	1399.74	717.36	-1292.80	4.44	-0.29	-4.43	
8561.00	90.920	332.340	6679.48	5464.48	1459.72	772.34	-1321.44	0.53	0.24	-0.47	
8623.00	91.540	332.700	6678.15	5463.15	1519.67	827.34	-1350.04	1.16	1.00	0.58	
8683.00	91.790	332.510	6676.40	5461.40	1577.65	880.58	-1377.64	0.52	0.42	-0.32	
8744.00	91.350	331.420	6674.73	5459.73	1636.78	934.41	-1406.30	1.93	-0.72	-1.79	
8804.00	91.020	330.950	6673.49	5458.49	1695.14	986.96	-1435.21	0.96	-0.55	-0.78	
8865.00	90.400	332.020	6672.73	5457.73	1754.40	1040.56	-1464.33	2.03	-1.02	1.75	
8925.00	90.280	331.760	6672.38	5457.38	1812.60	1093.48	-1492.60	0.48	-0.20	-0.43	
8986.00	91.050	331.220	6671.67	5456.67	1871.87	1147.08	-1521.71	1.54	1.26	-0.89	



Actual Wellpath Report

OXF-155 513068 AWP Proj: 10183'

Page 7 of 10



Where energy meets innovation.

REFERENCE WELLPATH IDENTIFICATION			
Operator	EQT	Slot	Slot 513068
Area	Doddridge Co., WV	Well	OXF-155 513068
Field	Doddridge	Wellbore	OXF-155 513068 AWB
Facility	OXF-155 Pad		

WELLPATH DATA (170 stations)											
MD [ft]	Inclination [°]	Azimuth [°]	TVD [ft]	TVDSS [ft]	Vert Sect [ft]	North [ft]	East [ft]	DLS [°/100ft]	Build Rate [°/100ft]	Turn Rate [°/100ft]	Comments
9046.00	91.200	331.750	6670.49	5455.49	1930.15	1199.79	-1550.35	0.92	0.25	0.88	
9107.00	91.140	331.850	6669.25	5454.25	1989.33	1253.54	-1579.17	0.19	-0.10	0.16	
9169.00	91.020	332.230	6668.08	5453.08	2049.42	1308.29	-1608.23	0.64	-0.19	0.61	
9230.00	91.540	333.520	6666.72	5451.72	2108.31	1362.57	-1636.04	2.28	0.85	2.11	
9292.00	91.260	334.580	6665.20	5450.20	2167.81	1418.30	-1663.16	1.77	-0.45	1.71	
9353.00	90.920	335.090	6664.04	5449.04	2226.13	1473.50	-1689.09	1.00	-0.56	0.84	
9414.00	90.740	334.360	6663.16	5448.16	2284.48	1528.65	-1715.14	1.23	-0.30	-1.20	
9475.00	90.920	334.470	6662.27	5447.27	2342.93	1583.67	-1741.48	0.35	0.30	0.18	
9537.00	90.800	334.530	6661.34	5446.34	2402.32	1639.62	-1768.16	0.22	-0.19	0.10	
9598.00	91.200	333.770	6660.28	5445.28	2460.84	1694.51	-1794.76	1.41	0.66	-1.25	
9661.00	92.280	334.540	6658.36	5443.36	2521.27	1751.18	-1822.21	2.11	1.71	1.22	
9723.00	92.490	336.400	6655.78	5440.78	2580.29	1807.53	-1847.93	3.02	0.34	3.00	
9784.00	92.490	333.730	6653.13	5438.13	2638.49	1862.79	-1873.62	4.37	0.00	-4.38	
9847.00	92.650	331.060	6650.31	5435.31	2699.39	1918.56	-1902.78	4.24	0.25	-4.24	
9908.00	92.550	330.760	6647.54	5432.54	2758.74	1971.81	-1932.40	0.52	-0.16	-0.49	
9970.00	91.910	331.450	6645.13	5430.13	2819.03	2026.05	-1962.34	1.52	-1.03	1.11	
10032.00	91.970	331.700	6643.03	5428.03	2879.22	2080.54	-1991.83	0.41	0.10	0.40	
10093.00	91.080	329.430	6641.41	5426.41	2938.69	2133.64	-2021.80	4.00	-1.46	-3.72	
10154.00	91.570	330.070	6640.00	5425.00	2998.35	2186.32	-2052.52	1.32	0.80	1.05	Final Survey=10154' MD / 6640.00' TVD
10183.00	91.570	330.070	6639.20	5424.20	3026.68	2211.45	-2066.98	0.00	0.00	0.00	Projection to TD=10183' MD / 6639.20' TVD



Actual Wellpath Report

OXF-155 513068 AWP Proj: 10183'

Page 8 of 10



Where energy meets innovation.

REFERENCE WELLPATH IDENTIFICATION			
Operator	EQT	Slot	Slot 513068
Area	Doddridge Co., WV	Well	OXF-155 513068
Field	Doddridge	Wellbore	OXF-155 513068 AWB
Facility	OXF-155 Pad		

HOLE & CASING SECTIONS									
- Ref Wellbore: OXF-155 513068 AWB Ref Wellpath: OXF-155 513068 AWP Proj: 10183'									
String/Diameter	Start MD [ft]	End MD [ft]	Interval [ft]	Start TVD [ft]	End TVD [ft]	Start N/S [ft]	Start E/W [ft]	End N/S [ft]	End E/W [ft]
20in Conductor	16.00	56.00	40.00	16.00	56.00	0.00	0.00	0.00	-0.07
17.5in Open Hole	56.00	572.00	516.00	56.00	572.00	0.00	-0.07	-0.20	-0.65
13.375in Casing Surface	16.00	572.00	556.00	16.00	572.00	0.00	0.00	-0.20	-0.65
12.25in Open Hole	572.00	3469.00	2897.00	572.00	3468.88	-0.20	-0.65	7.41	21.09
9.625in Casing Intermediate	16.00	3469.00	3453.00	16.00	3468.88	0.00	0.00	7.41	21.09
8.75in Open Hole	3469.00	6134.00	2665.00	3468.88	5928.72	7.41	21.09	-568.07	-167.25
8.5in Open Hole	6134.00	10183.00	4049.00	5928.72	6639.20	-568.07	-167.25	2211.45	-2066.98
5.5in Casing Production	16.00	10183.00	10167.00	16.00	6639.20	0.00	0.00	2211.45	-2066.98

TARGETS								
Name	TVD [ft]	North [ft]	East [ft]	Grid East [US ft]	Grid North [US ft]	Latitude	Longitude	Shape
OXF-155 513068 BHL Rev-1	6670.00	2359.56	-2139.18	1626708.44	264954.01	39°13'11.781"N	80°49'03.352"W	point
OXF-155 513068 LP Plat	6670.00	-405.03	-730.55	1628117.02	262189.51	39°12'44.663"N	80°48'44.942"W	point
OXF-155 513068 LP Rev-1	6670.00	-337.29	-765.06	1628082.51	262257.25	39°12'45.328"N	80°48'45.393"W	point
OXF-155 Hard Line	7000.00	-59.26	-9.42	1628838.12	262535.27	39°12'48.184"N	80°48'35.846"W	polygon

01/05/2018



Actual Wellpath Report

OXF-155 513068 AWP Proj: 10183'

Page 9 of 10



Where energy meets innovation.

REFERENCE WELLPATH IDENTIFICATION			
Operator	EQT	Slot	Slot 513068
Area	Doddridge Co., WV	Well	OXF-155 513068
Field	Doddridge	Wellbore	OXF-155 513068 AWB
Facility	OXF-155 Pad		

WELLPATH COMPOSITION - Ref Wellbore: OXF-155 513068 AWB Ref Wellpath: OXF-155 513068 AWP Proj: 10183'				
Start MD [ft]	End MD [ft]	Positional Uncertainty Model	Log Name/Comment	Wellbore
16.00	4897.00	Gyrodata standard - Drop gyro or Multi-shot	01_Gyrodata MS Gyro <8-3/4"> (103'-4897')	OXF-155 513068 AWB
4897.00	6062.00	OWSG MWD rev2 - Standard	02_SDI MWD <8-3/4"> (4897')(4910'-6062')	OXF-155 513068 AWB
6062.00	10154.00	BHI AutoTrak Curve (Standard)	03_BHI AT Curve <8-1/2"> (6062')(6085'-10154')	OXF-155 513068 AWB
10154.00	10183.00	Blind Drilling (std)	Projection to bit	OXF-155 513068 AWB

01/05/2018



Actual Wellpath Report

OXF-155 513068 AWP Proj: 10183'

Page 10 of 10



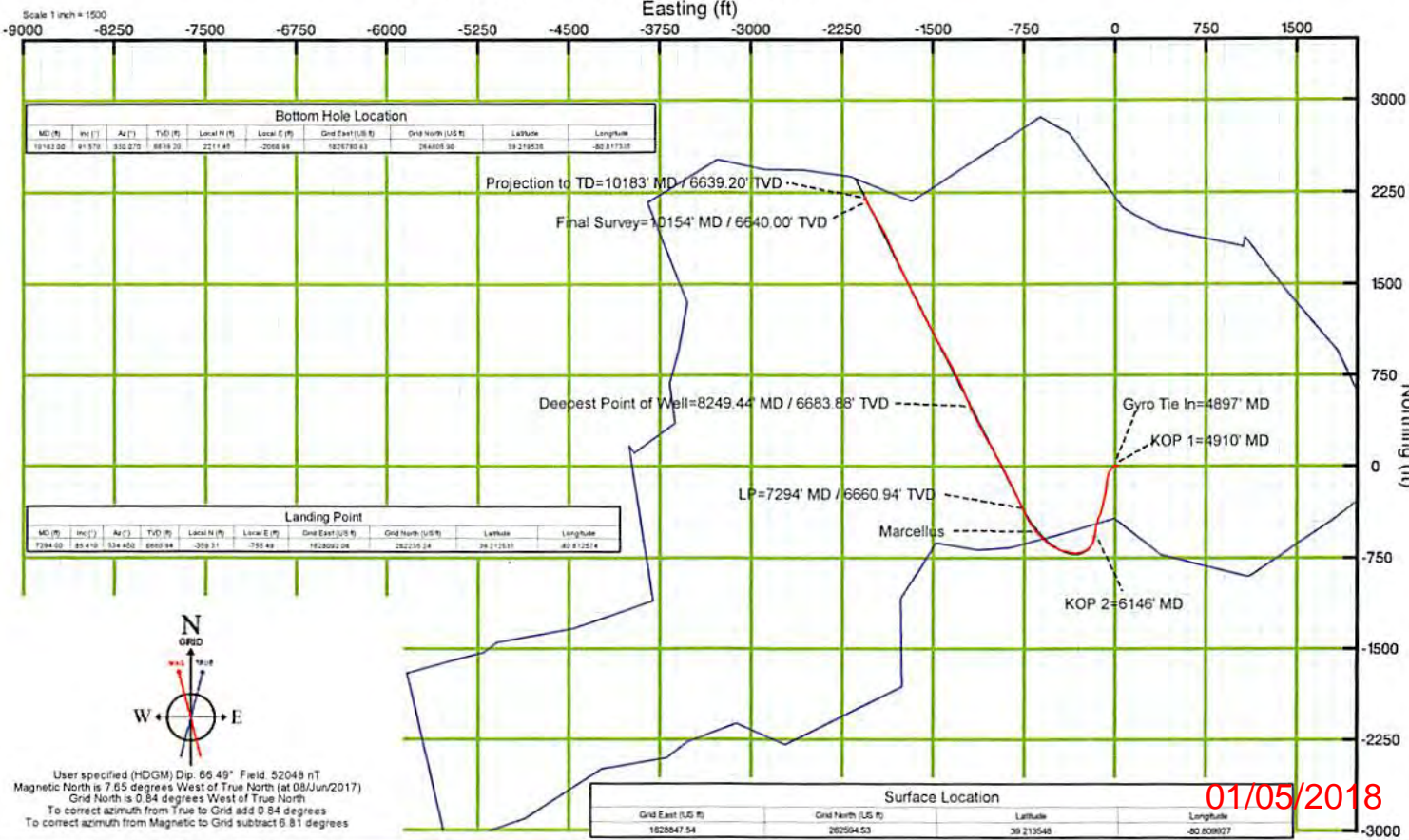
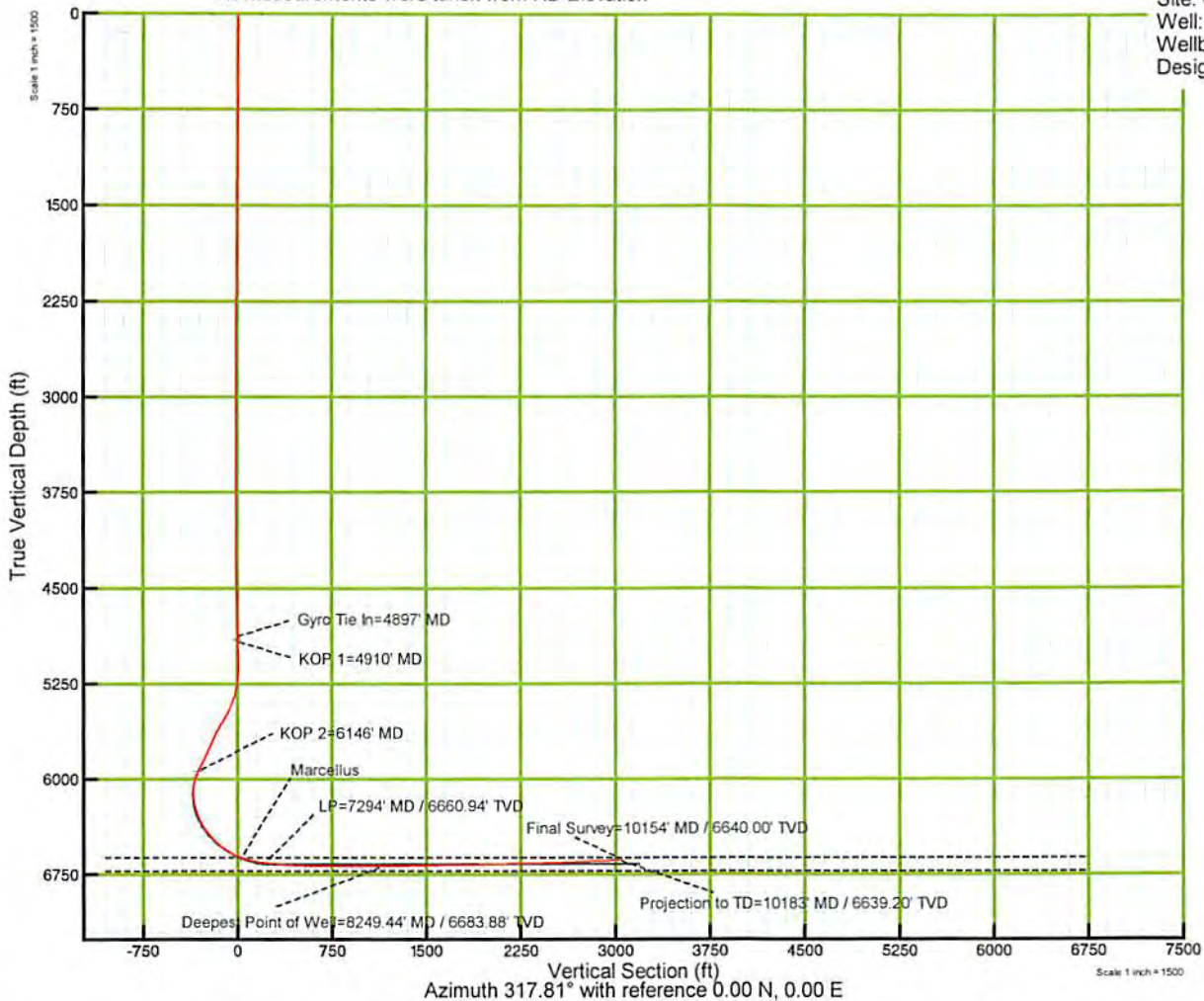
Where energy meets innovation.

REFERENCE WELLPATH IDENTIFICATION			
Operator	EQT	Slot	Slot 513068
Area	Doddridge Co., WV	Well	OXF-155 513068
Field	Doddridge	Wellbore	OXF-155 513068 AWB
Facility	OXF-155 Pad		

WELLPATH COMMENTS				
MD [ft]	Inclination [°]	Azimuth [°]	TVD [ft]	Comment
4897.00	1.460	288.280	4896.75	Gyro Tie In=4897' MD
4910.00	1.260	283.373	4909.75	KOP 1=4910' MD
6146.00	37.940	187.720	5938.17	KOP 2=6146' MD
7294.00	85.410	334.450	6660.94	LP=7294' MD / 6660.94' TVD
8249.44	90.000	336.467	6683.88	Deepest Point of Well=8249.44' MD / 6683.88' TVD
10154.00	91.570	330.070	6640.00	Final Survey=10154' MD / 6640.00' TVD
10183.00	91.570	330.070	6639.20	Projection to TD=10183' MD / 6639.20' TVD

KB Elevation=1215 FT
Ground Elevation=1199 FT
All measurements were taken from KB Elevation

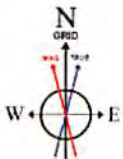
Project: Doddridge County, WV
Site: OXF-155
Well: OXF-155 513068
Wellbore: Main Wellbore
Design: As-Drilled Surveys



Bottom Hole Location									
MD (ft)	Inc (")	Az (°)	TVD (ft)	Local N (ft)	Local E (ft)	Grid East (US ft)	Grid North (US ft)	Latitude	Longitude
10154.00	81.578	330.275	6639.20	2211.49	-2068.46	1628547.54	262594.53	39.219536	-80.811338

Landing Point									
MD (ft)	Inc (")	Az (°)	TVD (ft)	Local N (ft)	Local E (ft)	Grid East (US ft)	Grid North (US ft)	Latitude	Longitude
7294.00	85.419	334.450	6660.94	359.31	-795.49	1628592.04	262335.34	39.211261	-80.812214

Surface Location			
Grid East (US ft)	Grid North (US ft)	Latitude	Longitude
1628547.54	262594.53	39.219548	-80.809927



User specified (HDGM) Dip: 66.49° Field: 52048 nT
Magnetic North is 7.65 degrees West of True North (at 08/Jun/2017)
Grid North is 0.84 degrees West of True North
To correct azimuth from True to Grid add 0.84 degrees
To correct azimuth from Magnetic to Grid subtract 6.81 degrees

01/05/2018