

# ANTERO RESOURCES CORPORATION

Location: Doddridge Co., WV  
 Field: Doddridge  
 Facility: Stanley Pad



Slot: Slot #03  
 Well: Cool Unit 2H  
 Wellbore: Cool Unit 2H PWB

API: 47-017-06834-0000  
 BHI Job #: 109390803  
 Rig: Patterson 342  
 Duration: 09/07/2018-09/10/2018

Plot reference wellpath is Cool Unit 2H PWB Rev-A.0	Grid System: NAD27 / UTM Zone 17 North, US feet
True vertical depths are referenced to Patterson 342 (RKB)	North Reference: Grid north
Measured depths are referenced to Patterson 342 (RKB)	Scale: True distance
Patterson 342 (RKB) to Mean Sea Level: 1120 feet	Depths are in feet
Mean Sea Level to Ground level (At Slot: Slot #03): -1095 feet	Created by: delisat on 2018-09-12
Coordinates are in feet referenced to Slot	Database: WA_MPL_EasternUS_Defn



Gyrodata MS Gyro <17-1/2"> (50-517") : 0.22" Inc, 50.00ft MD, 50.00ft TVD, 0.02ft VS

Panther EM <12-1/4"> (517)(591-2525) : 0.50" Inc, 591.00ft MD, 590.99ft TVD, -0.95ft VS

Location Information			
Facility Name	Grid East (US ft)	Grid North (US ft)	Longitude
Stanley Pad	1674498.608	14248185.594	80°52'46.680"W
Slot	Local E (ft)	Grid East (US ft)	Longitude
Slot #03	9.11	1674502.529	80°52'46.630"W
Comment	Cool Unit 2H		
Patterson 342 (RKB) to Ground level (At Slot: Slot #03)			25ft
Mean Sea Level to Ground level (At Slot: Slot #03)			-1095ft
Patterson 342 (RKB) to Mean Sea Level			1120ft

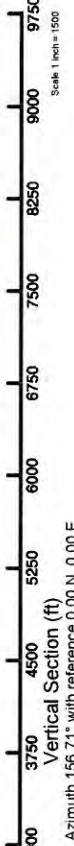
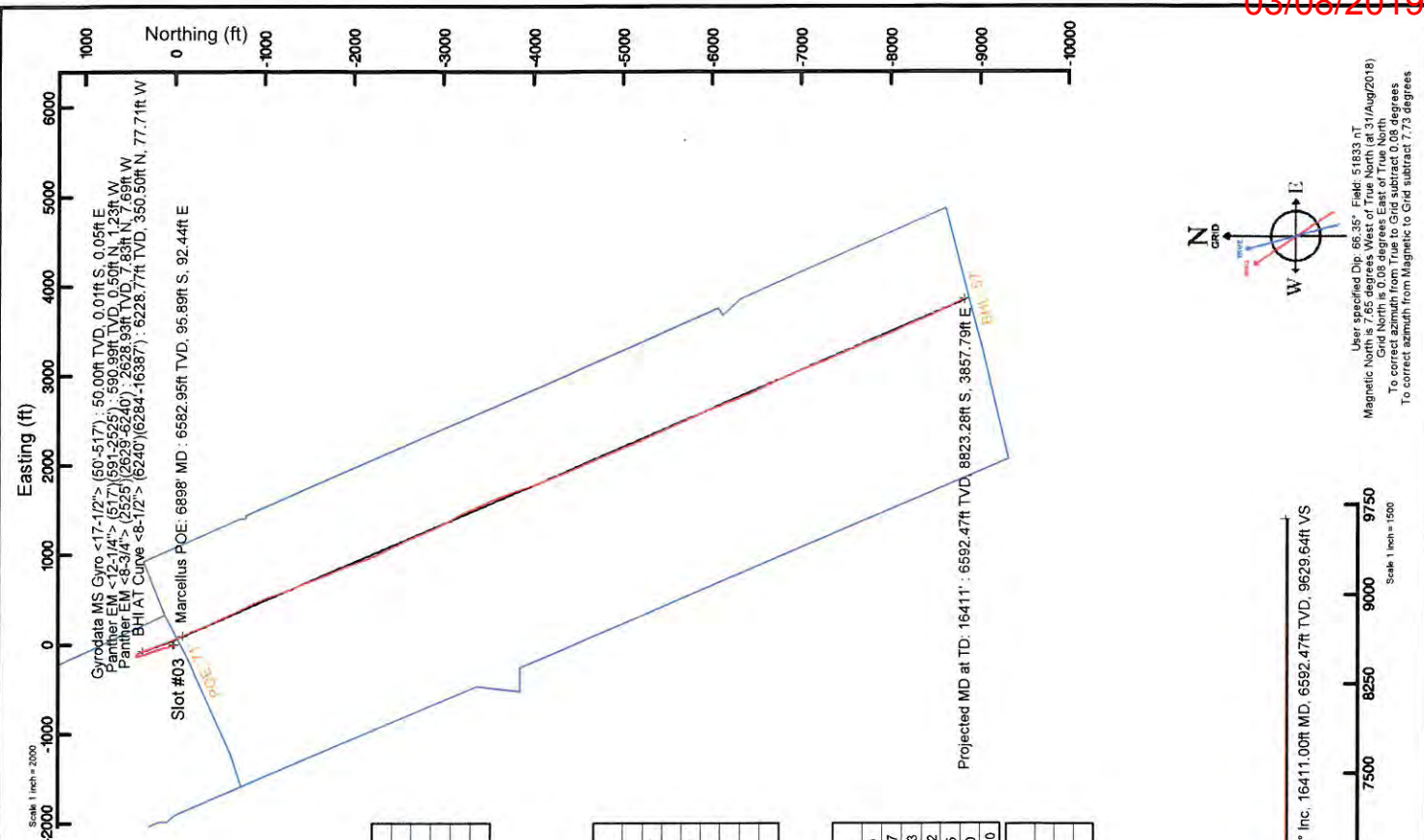
Panther EM <8-3/4"> (2525)(2629-6240) : 0.26" Inc, 2629.00ft MD, 2628.93ft TVD, -10.23ft VS

Well Profile Data						
Design Comment	MD (ft)	Inc (")	Az (°)	TVD (ft)	Local N (ft)	VS (ft)
Top On	6240.00	27.010	158.880	6190.09	370.26	-373.57
Proj. To Bottom	6300.00	30.770	164.520	6242.62	342.74	-344.73
End of 3D Arc	6644.76	56.708	159.359	6489.66	119.01	-109.32
POE	6880.85	75.441	156.710	6585.00	-80.08	105.45
Landing PL	7052.85	90.000	156.710	6608.00	-245.46	285.50
BHL	16411.96	90.000	156.710	6608.00	-8832.76	9634.60

Well Data		
Slot	Well	Wellbore
Slot #03	Cool Unit 2H	Cool Unit 2H AVWB
Slot #03	Cool Unit 2H	Cool Unit 2H PWB
		Cool Unit 2H PWB Rev-A.0

BHI AT Curve <8-1/2"> (6240)(6284-16387) : 29.87" Inc, 6284.00ft MD, 6228.77ft TVD, -352.67ft VS  
 Marcellus POE: 6898' MD : 76.14" Inc, 6898.00ft MD, 6582.95ft TVD, 124.63ft VS

Projected MD at TD: 16411' : 90.05" Inc, 16411.00ft MD, 6592.47ft TVD, 9629.64ft VS



User specified Dip: 65.35° Field: 51833.0T  
 Magnetic North is 7.65 degrees West of True North (at 31/Aug/2018)  
 Grid North is 0.08 degrees East of True North  
 To correct azimuth from True to Grid subtract 0.08 degrees  
 To correct azimuth from Magnetic to Grid subtract 7.73 degrees



# Actual Wellpath Report

Cool Unit 2H AWP Proj: 16411'

Page 1 of 11



03/08/2019

REFERENCE WELLPATH IDENTIFICATION		
Operator	ANTERO RESOURCES CORPORATION	Slot #03
Area	Doddridge Co., WV	Cool Unit 2H
Field	Doddridge	Cool Unit 2H AWB
Facility	Stanley Pad	

REPORT SETUP INFORMATION	
Projection System	NAD27 / UTM Zone 17 North, US feet
North Reference	Grid
Scale	0.999601
Convergence at slot	0.08° East
Software System	WellArchitect® 5.1
User	Delaset
Report Generated	12/Sep/2018 at 10:37
Database/Source file	WA_MPL_EasternUS_Defn/Cool_Unit_2H_AWP_Proj_16411_.xml

WELLPATH LOCATION						
	Local coordinates		Grid coordinates		Geographic coordinates	
	North[ft]	East[ft]	Northing[US ft]	Latitude	Longitude	
Slot Location	9.11	3.92	14248194.70	39°14'12.640"N	80°52'46.630"W	
Facility Reference Pt			1674498.61	39°14'12.550"N	80°52'46.680"W	
Field Reference Pt			0.00	0°00'00.000"	85°29'19.301"W	

WELLPATH DATUM		
Calculation method	Minimum curvature	
Horizontal Reference Pt	Slot	
Vertical Reference Pt	Patterson 342 (RKB)	
MD Reference Pt	Patterson 342 (RKB)	
Field Vertical Reference	Mean Sea Level	
	Patterson 342 (RKB) to Facility Vertical Datum	25.00ft
	Patterson 342 (RKB) to Mean Sea Level	1120.00ft
	Patterson 342 (RKB) to Ground Level at Slot (Slot #03)	25.00ft
	Section Origin	N 0.00, E 0.00 ft
	Section Azimuth	156.71°



# Actual Wellpath Report

Cool Unit 2H AWP Proj: 16411'  
Page 2 of 11



REFERENCE WELLPATH IDENTIFICATION			
Operator	ANTERO RESOURCES CORPORATION	Slot	Slot #03
Area	Doddridge Co., WV	Well	Cool Unit 2H
Field	Doddridge	Wellbore	Cool Unit 2H AWB
Facility	Stanley Pad		

WELLPATH DATA (206 stations) † = interpolated/extrapolated station																	
MD ft	Inclination °	Azimuth °	TVD ft	Vert.Sect ft	North ft	East ft	Grid East ft	Grid North ft	Latitude	Longitude	Closure Dist ft	Closure Dir °	DLS ft/100ft	Build Rate ft/100ft	Turn Rate °/100ft	Comments	
0.00	0.000	97.490	0.00	0.00	0.00	0.00	1674502.53	14248194.70	39°14'12.640"N	80°52'46.630"W	0.00	0.000	0.00	0.00	0.00		
25.00	0.000	97.490	25.00	0.00	0.00	0.00	1674502.53	14248194.70	39°14'12.640"N	80°52'46.630"W	0.00	0.000	0.00	0.00	0.00		
50.00	0.220	97.490	50.00	0.02	-0.01	0.05	1674502.58	14248194.70	39°14'12.640"N	80°52'46.629"W	0.05	97.490	0.88	0.88	389.96	Byrod data MS Gyro <17-1/2"> (50'-517')	
75.00	0.300	91.290	75.00	0.08	-0.01	0.16	1674502.69	14248194.69	39°14'12.640"N	80°52'46.628"W	0.16	94.977	0.34	0.32	-24.80		
100.00	0.330	97.880	100.00	0.14	-0.03	0.30	1674502.83	14248194.68	39°14'12.640"N	80°52'46.626"W	0.30	94.869	0.19	0.12	26.36		
125.00	0.300	104.140	125.00	0.22	-0.05	0.43	1674502.96	14248194.65	39°14'12.639"N	80°52'46.625"W	0.44	96.756	0.18	-0.12	25.04		
150.00	0.100	138.110	150.00	0.28	-0.08	0.51	1674503.04	14248194.62	39°14'12.639"N	80°52'46.624"W	0.52	99.286	0.90	-0.80	135.88		
175.00	0.070	195.500	175.00	0.31	-0.11	0.48	1674503.05	14248194.59	39°14'12.639"N	80°52'46.624"W	0.53	102.390	0.31	-0.12	229.56		
200.00	0.090	231.020	200.00	0.33	-0.14	0.50	1674503.03	14248194.56	39°14'12.639"N	80°52'46.624"W	0.52	105.756	0.24	0.08	142.08		
225.00	0.080	216.280	225.00	0.34	-0.17	0.48	1674503.00	14248194.53	39°14'12.638"N	80°52'46.624"W	0.50	109.436	0.10	-0.04	-58.96		
250.00	0.140	208.390	250.00	0.37	-0.21	0.45	1674502.98	14248194.49	39°14'12.638"N	80°52'46.624"W	0.50	114.850	0.25	0.24	-31.56		
275.00	0.160	234.930	275.00	0.41	-0.26	0.41	1674502.94	14248194.45	39°14'12.637"N	80°52'46.625"W	0.48	122.093	0.29	0.08	106.16		
300.00	0.210	242.920	300.00	0.40	-0.30	0.34	1674502.87	14248194.40	39°14'12.637"N	80°52'46.626"W	0.45	131.237	0.22	0.20	31.96		
325.00	0.130	266.950	325.00	0.40	-0.32	0.27	1674502.80	14248194.38	39°14'12.637"N	80°52'46.627"W	0.42	139.829	0.42	-0.32	96.12		
350.00	0.220	310.210	350.00	0.35	-0.29	0.20	1674502.73	14248194.41	39°14'12.637"N	80°52'46.627"W	0.35	144.789	0.62	0.36	173.04		
375.00	0.210	284.610	375.00	0.28	-0.25	0.12	1674502.65	14248194.45	39°14'12.638"N	80°52'46.628"W	0.28	153.464	0.38	-0.04	-102.40		
400.00	0.210	291.400	400.00	0.22	-0.22	0.04	1674502.57	14248194.48	39°14'12.638"N	80°52'46.630"W	0.22	170.564	0.10	0.00	27.16		
425.00	0.280	299.660	425.00	0.13	-0.17	-0.06	1674502.47	14248194.53	39°14'12.638"N	80°52'46.631"W	0.18	199.073	0.31	0.28	33.04		
450.00	0.370	300.340	450.00	0.02	-0.10	-0.18	1674502.35	14248194.60	39°14'12.639"N	80°52'46.632"W	0.21	241.046	0.36	0.36	2.72		
475.00	0.430	300.450	475.00	-0.12	-0.01	-0.33	1674502.20	14248194.69	39°14'12.640"N	80°52'46.634"W	0.33	267.856	0.24	0.24	0.44		
500.00	0.460	294.910	500.00	-0.27	0.08	-0.50	1674502.02	14248194.78	39°14'12.641"N	80°52'46.636"W	0.51	278.717	0.21	0.12	-22.16		
517.00	0.570	298.050	517.00	-0.39	0.15	-0.84	1674501.89	14248194.85	39°14'12.641"N	80°52'46.638"W	0.66	282.818	0.67	0.65	18.47		
591.00	0.500	303.860	590.99	-0.95	0.50	-1.23	1674501.30	14248195.20	39°14'12.645"N	80°52'46.646"W	1.33	292.010	0.12	-0.09	7.85	Panther EM <12-1/4"> (517'\\591-2525)	
682.00	0.150	288.590	681.99	-1.32	0.72	-1.68	1674500.85	14248195.42	39°14'12.647"N	80°52'46.651"W	1.83	293.081	0.43	-0.38	-38.76		
771.00	0.430	273.510	770.99	-1.52	0.73	-2.13	1674500.40	14248195.44	39°14'12.647"N	80°52'46.657"W	2.26	289.009	0.32	0.31	5.53		
867.00	0.320	306.350	866.99	-1.91	0.92	-2.71	1674499.82	14248195.62	39°14'12.649"N	80°52'46.664"W	2.86	288.682	0.25	-0.11	34.21		
961.00	0.270	327.230	960.99	-2.36	1.26	-3.04	1674499.49	14248195.96	39°14'12.652"N	80°52'46.669"W	3.29	292.476	0.13	-0.05	22.21		
1056.00	0.430	357.920	1055.98	-2.91	1.80	-3.17	1674499.36	14248196.50	39°14'12.658"N	80°52'46.670"W	3.65	299.588	0.25	0.17	32.31		
1150.00	0.290	23.750	1149.98	-3.40	2.37	-3.09	1674499.44	14248197.07	39°14'12.663"N	80°52'46.669"W	3.90	307.509	0.22	-0.15	27.48		
1245.00	0.360	340.160	1244.98	-3.86	2.87	-3.09	1674499.44	14248197.57	39°14'12.668"N	80°52'46.669"W	4.22	312.870	0.26	0.07	-45.88		



# Actual Wellpath Report

Cool Unit 2H AWP Proj: 16411'  
Page 3 of 11



REFERENCE WELLPATH IDENTIFICATION	
Operator	ANTERO RESOURCES CORPORATION
Area	Doddridge Co., WY
Field	Doddridge
Facility	Stanley Pad
Slot	Slot #03
Well	Cool Unit 2H
Wellbore	Cool Unit 2H AWB

WELLPATH DATA (206 stations)																
MD (ft)	Inclination (°)	Azimuth (°)	TVD (ft)	VertSect (ft)	North (ft)	East (ft)	Grid East (ft)	Grid North (ft)	Latitude	Longitude	Closure Dist (ft)	Closure Dir (°)	DLS (ft/100ft)	Build Rate (ft/100ft)	Turn Rate (ft/100ft)	Comments
1340.00	0.360	315.410	1339.98	-4.44	3.37	-3.41	1674499.12	14248198.07	39°14'12.673"N	80°52'46.673"W	4.79	314.666	0.16	0.00	-26.05	
1435.00	0.630	328.810	1434.98	-5.23	4.03	-3.89	1674498.64	14248198.73	39°14'12.680"N	80°52'46.679"W	5.60	316.012	0.31	0.28	14.11	
1529.00	0.850	322.890	1528.97	-6.42	5.02	-4.57	1674497.96	14248199.72	39°14'12.690"N	80°52'46.688"W	6.79	317.682	0.25	0.23	-6.30	
1623.00	1.170	328.490	1622.95	-8.05	6.40	-5.50	1674497.03	14248201.10	39°14'12.703"N	80°52'46.700"W	8.43	319.335	0.36	0.34	5.36	
1717.00	0.640	334.720	1716.94	-9.52	7.69	-6.22	1674496.31	14248202.39	39°14'12.716"N	80°52'46.709"W	9.89	321.026	0.57	-0.56	6.63	
1812.00	0.500	324.800	1811.94	-10.46	8.51	-6.69	1674495.94	14248203.21	39°14'12.724"N	80°52'46.715"W	10.82	321.835	0.18	-0.15	-10.44	
1906.00	0.210	355.240	1905.93	-11.02	9.02	-6.94	1674495.59	14248203.71	39°14'12.729"N	80°52'46.718"W	11.38	322.420	0.36	-0.31	32.38	
2000.00	0.240	355.860	1999.93	-11.37	9.38	-6.97	1674495.56	14248204.08	39°14'12.733"N	80°52'46.718"W	11.69	323.409	0.03	0.03	0.66	
2095.00	0.300	183.930	2094.93	-11.34	9.33	-7.00	1674495.53	14248204.03	39°14'12.732"N	80°52'46.719"W	11.67	323.140	0.57	0.06	-180.98	
2190.00	0.300	185.500	2189.93	-10.90	8.94	-7.04	1674495.49	14248203.54	39°14'12.727"N	80°52'46.719"W	11.30	321.466	0.01	0.00	1.65	
2284.00	0.170	253.380	2283.93	-10.70	8.55	-7.20	1674495.34	14248203.25	39°14'12.725"N	80°52'46.721"W	11.18	319.926	0.30	-0.14	72.21	
2378.00	0.190	177.330	2377.93	-10.57	8.36	-7.32	1674495.21	14248203.06	39°14'12.723"N	80°52'46.723"W	11.11	318.778	0.24	0.02	-80.90	
2472.00	0.170	252.240	2471.93	-10.44	8.16	-7.45	1674495.08	14248202.86	39°14'12.721"N	80°52'46.725"W	11.05	317.611	0.23	-0.02	79.69	
2525.00	0.100	184.190	2524.93	-10.41	8.09	-7.53	1674495.01	14248202.79	39°14'12.720"N	80°52'46.726"W	11.05	317.066	0.31	-0.13	-128.40	
2629.00	0.260	223.160	2628.93	-10.23	7.83	-7.69	1674494.94	14248202.53	39°14'12.717"N	80°52'46.728"W	10.98	315.490	0.19	0.15	37.47	Panther EM <8-3/4"> (2525)(2629-6240)
2723.00	0.240	188.450	2722.93	-9.98	7.48	-7.87	1674494.66	14248202.18	39°14'12.714"N	80°52'46.730"W	10.86	313.536	0.16	-0.02	-36.93	
2818.00	0.150	254.620	2817.93	-9.83	7.25	-8.02	1674494.51	14248201.95	39°14'12.712"N	80°52'46.732"W	10.81	312.108	0.24	-0.09	69.65	
2912.00	0.090	347.210	2911.93	-9.92	7.29	-8.15	1674494.38	14248201.99	39°14'12.712"N	80°52'46.733"W	10.94	311.787	0.19	-0.06	98.50	
3006.00	0.130	84.110	3005.93	-9.96	7.37	-8.06	1674494.47	14248202.07	39°14'12.713"N	80°52'46.732"W	10.92	312.424	0.18	0.04	103.09	
3101.00	0.040	147.340	3100.93	-9.89	7.35	-7.94	1674494.59	14248202.05	39°14'12.713"N	80°52'46.731"W	10.82	312.805	0.12	-0.09	66.56	
3200.00	2.280	337.920	3199.90	-11.83	9.15	-8.66	1674493.87	14248203.85	39°14'12.731"N	80°52'46.740"W	12.60	316.571	2.34	2.26	-171.13	
3294.00	3.750	335.040	3293.77	-16.77	13.67	-10.66	1674491.87	14248208.36	39°14'12.775"N	80°52'46.765"W	17.33	322.048	1.57	1.56	-3.06	
3389.00	4.830	335.830	3388.50	-23.87	20.13	-13.61	1674488.93	14248214.83	39°14'12.839"N	80°52'46.803"W	24.30	325.944	1.14	1.14	0.83	
3483.00	5.820	341.890	3482.10	-32.58	28.27	-16.71	1674485.82	14248222.96	39°14'12.920"N	80°52'46.842"W	32.84	329.416	1.21	1.05	6.45	
3578.00	6.930	341.280	3576.51	-43.09	38.28	-20.05	1674482.49	14248232.97	39°14'13.019"N	80°52'46.884"W	43.21	332.359	1.17	1.17	-0.64	
3672.00	7.500	340.420	3669.76	-54.86	49.43	-23.92	1674478.61	14248244.11	39°14'13.129"N	80°52'46.933"W	54.92	334.174	0.62	0.61	-0.91	
3766.00	8.380	342.360	3762.86	-67.80	61.74	-28.06	1674474.48	14248256.42	39°14'13.251"N	80°52'46.986"W	67.82	335.562	0.98	0.94	2.06	
3861.00	10.110	339.130	3856.62	-83.02	76.13	-33.12	1674469.42	14248270.80	39°14'13.393"N	80°52'47.050"W	83.02	336.486	1.90	1.82	-3.40	
3955.00	9.580	345.590	3949.24	-98.99	91.41	-39.01	1674464.53	14248286.08	39°14'13.544"N	80°52'47.112"W	99.00	337.423	1.30	-0.56	6.87	
4050.00	11.010	348.340	4042.71	-115.69	107.96	-41.81	1674460.73	14248302.61	39°14'13.708"N	80°52'47.160"W	115.77	338.829	1.59	1.51	2.89	



# Actual Wellpath Report

Cool Unit 2H AWP Proj: 16411'

Page 4 of 11



03/08/2019

REFERENCE WELLPATH IDENTIFICATION		Slot	Slot #03
Operator	ANTERO RESOURCES CORPORATION	Well	Cool Unit 2H
Area	Doddridge Co., WV	Wellbore	Cool Unit 2H AWB
Field	Doddridge		
Facility	Stanley Pad		

WELLPATH DATA (206 stations) † = interpolated/extrapolated station																
MD (ft)	Inclination (°)	Azimuth (°)	TVD (ft)	Vert Sect (ft)	North (ft)	East (ft)	Grid East (ft)	Grid North (ft)	Latitude	Longitude	Closure Dist (ft)	Closure Dir (°)	DLS (ft/100ft)	Build Rate (ft/100ft)	Turn Rate (ft/100ft)	Comments
4144.00	10.840	344.550	4135.04	-133.08	125.11	-45.94	1674456.61	14248319.76	39°14'13.87"N	80°52'47.212"W	133.28	339.839	0.85	-0.39	-4.03	
4239.00	10.810	343.160	4228.38	-150.62	142.09	-50.85	1674451.70	14248336.74	39°14'14.045"N	80°52'47.274"W	150.92	340.308	0.33	0.18	-1.46	
4333.00	9.240	331.350	4320.95	-186.90	157.15	-57.03	1674445.52	14248351.79	39°14'14.194"N	80°52'47.352"W	167.18	340.056	2.74	-1.67	-12.56	
4427.00	8.730	348.850	4413.82	-181.39	170.78	-62.03	1674440.53	14248365.41	39°14'14.329"N	80°52'47.415"W	181.69	340.039	2.95	-0.54	18.62	
4522.00	10.860	350.560	4507.43	-197.13	166.68	-64.89	1674437.67	14248381.31	39°14'14.486"N	80°52'47.452"W	197.64	340.833	2.26	2.24	1.80	
4617.00	9.720	338.480	4600.91	-213.83	202.97	-69.30	1674433.26	14248397.59	39°14'14.647"N	80°52'47.507"W	214.48	341.149	2.56	-1.20	-12.72	
4710.00	10.840	343.490	4692.41	-230.37	218.66	-74.66	1674427.89	14248413.28	39°14'14.802"N	80°52'47.575"W	231.06	341.147	1.54	1.20	5.39	
4805.00	12.440	338.730	4785.46	-249.46	236.76	-80.92	1674421.65	14248431.37	39°14'14.981"N	80°52'47.654"W	250.21	341.132	1.96	1.68	-5.01	
4898.00	12.170	343.100	4876.33	-269.22	255.48	-87.40	1674415.17	14248450.08	39°14'15.166"N	80°52'47.736"W	270.01	341.114	1.04	-0.29	4.70	
4992.00	11.840	345.640	4968.27	-288.59	274.30	-92.67	1674409.90	14248468.89	39°14'15.352"N	80°52'47.803"W	289.53	341.333	0.66	-0.35	2.70	
5087.00	11.780	336.470	5061.27	-307.92	292.64	-98.96	1674403.61	14248487.22	39°14'15.534"N	80°52'47.883"W	308.92	341.316	1.97	-0.06	-9.65	
5181.00	9.520	335.690	5153.64	-325.29	308.52	-105.99	1674396.58	14248503.10	39°14'15.691"N	80°52'47.972"W	326.22	341.040	2.41	-2.40	-0.83	
5276.00	9.200	341.040	5247.38	-340.71	322.86	-111.69	1674390.88	14248517.43	39°14'15.833"N	80°52'48.044"W	341.64	340.917	0.98	-0.34	5.63	
5370.00	10.920	349.410	5339.94	-356.90	338.72	-115.77	1674386.80	14248533.29	39°14'15.989"N	80°52'48.096"W	357.96	341.130	2.40	1.83	8.90	
5464.00	9.930	336.920	5432.39	-373.69	354.93	-120.59	1674381.99	14248549.49	39°14'16.150"N	80°52'48.157"W	374.86	341.235	2.62	-1.05	-13.29	
5559.00	9.430	346.430	5526.05	-389.55	370.03	-125.62	1674376.96	14248564.59	39°14'16.299"N	80°52'48.220"W	390.78	341.248	1.76	-0.53	10.01	
5653.00	9.450	339.180	5618.78	-404.85	384.73	-130.17	1674372.41	14248579.28	39°14'16.444"N	80°52'48.278"W	406.16	341.307	1.26	0.02	-7.71	
5747.00	10.410	346.000	5711.37	-420.94	400.19	-134.97	1674367.61	14248594.73	39°14'16.597"N	80°52'48.339"W	422.34	341.362	1.61	1.02	7.26	
5842.00	7.150	355.950	5805.25	-435.00	414.42	-137.47	1674362.61	14248610.05	39°14'16.738"N	80°52'48.370"W	436.62	341.649	3.77	-3.43	10.47	
5936.00	6.450	52.640	5898.69	-441.81	423.47	-133.68	1674368.90	14248626.00	39°14'16.827"N	80°52'48.322"W	444.06	342.480	6.89	-0.74	60.31	
6030.00	9.660	113.530	5991.90	-437.34	423.52	-122.23	1674380.35	14248641.80	39°14'16.828"N	80°52'48.176"W	440.81	343.902	9.15	3.41	64.78	
6125.00	17.570	139.870	6084.24	-417.75	409.34	-105.64	1674396.93	14248660.38	39°14'16.887"N	80°52'48.966"W	422.75	345.529	10.38	8.33	27.73	
6219.00	26.590	157.030	6171.34	-383.03	379.03	-88.23	1674414.33	14248673.88	39°14'16.987"N	80°52'47.745"W	389.16	346.896	11.70	9.60	18.26	
6240.00	27.010	158.880	6190.09	-373.57	370.26	-84.68	1674417.88	14248684.81	39°14'16.301"N	80°52'47.700"W	379.81	347.118	4.45	2.00	8.81	
6284.00	29.870	162.090	6228.77	-352.67	350.50	-77.71	1674424.85	14248545.07	39°14'16.105"N	80°52'47.612"W	359.01	347.500	7.37	6.50	7.30	BHI/AT Curve <8-1/2"> (6240)(6284-16387)
6331.00	32.110	161.140	6269.06	-328.56	327.54	-70.07	1674432.49	14248522.11	39°14'15.878"N	80°52'47.515"W	334.95	347.925	4.88	4.77	-2.02	
6378.00	35.880	161.110	6308.02	-302.68	302.68	-61.57	1674440.98	14248497.26	39°14'15.632"N	80°52'47.407"W	308.88	348.502	8.02	8.02	-0.06	
6425.00	39.350	160.830	6345.25	-273.76	275.57	-52.21	1674450.34	14248470.16	39°14'15.364"N	80°52'47.289"W	280.47	349.271	7.39	7.38	-0.60	
6472.00	43.040	160.580	6380.61	-242.88	246.36	-41.98	1674460.56	14248440.96	39°14'15.076"N	80°52'47.159"W	249.91	350.528	7.86	7.85	-0.53	
6512.00†	46.691	160.322	6408.95	-214.73	219.77	-32.54	1674470.00	14248414.39	39°14'14.813"N	80°52'47.040"W	222.17	351.577	9.14	9.13	-0.65	Middlesex. 6512' MD



# Actual Wellpath Report

Cool Unit 2H AWP Proj: 16411'  
Page 5 of 11



REFERENCE WELLPATH IDENTIFICATION		Slot	Slot #03
Operator	ANTERO RESOURCES CORPORATION		
Area	Doddridge Co., WV		
Field	Doddridge		
Facility	Stanley Pad		
	Well	Cool Unit 2H	
	Wellbore	Cool Unit 2H AWB	

WELLPATH DATA (206 stations) † = interpolated/extrapolated station																
MD	Inclination	Azimuth	TVD	Vert Sect	North	East	Grid East	Grid North	Latitude	Longitude	Closure Dist	Closure Dir	DLS	Build Rate	Turn Rate	Comments
(ft)	(°)	(°)	(ft)	(ft)	(ft)	(ft)	(US FT)	(US FT)	(°)	(°)	(ft)	(°)	(°/100ft)	(°/100ft)	(°/100ft)	
6519.00	47.330	160.280	6413.73	-209.62	214.95	-30.82	1674471.72	14248409.57	39°14'14.765"N	80°52'47.018"W	217.15	351.841	9.14	9.13	-0.60	
6566.00	51.770	160.270	6444.21	-173.93	181.29	-18.75	1674483.79	14248375.92	39°14'14.432"N	80°52'46.865"W	182.28	354.096	9.45	9.45	-0.02	
6613.00	56.160	159.840	6471.85	-136.00	145.58	-5.78	1674496.75	14248340.22	39°14'14.079"N	80°52'46.701"W	145.59	357.725	9.37	9.34	-0.91	
6660.00	59.850	159.620	6496.75	-96.20	108.19	8.03	1674510.55	14248302.85	39°14'13.709"N	80°52'46.526"W	108.49	4.242	7.86	7.85	-0.47	
6707.00	63.120	158.530	6519.19	-54.95	69.62	22.78	1674525.30	14248264.30	39°14'13.328"N	80°52'46.339"W	73.26	18.116	7.25	6.96	-2.32	
6718.00†	64.077	158.367	6524.08	-45.10	60.46	26.40	1674528.92	14248255.14	39°14'13.237"N	80°52'46.293"W	65.97	23.586	8.80	8.70	-1.48	Burkett: 6718' MD
6754.00	67.210	157.850	6538.92	-12.32	30.03	38.63	1674541.14	14248224.72	39°14'12.936"N	80°52'46.139"W	48.93	52.132	8.80	8.70	-1.44	
6801.00	70.880	157.330	6555.73	31.56	-10.53	55.36	1674557.86	14248184.17	39°14'12.535"N	80°52'45.927"W	56.35	100.774	7.88	7.81	-1.11	
6805.00†	71.127	157.245	6557.03	35.35	-14.02	56.82	1674559.32	14248180.68	39°14'12.501"N	80°52'45.908"W	58.52	103.864	6.48	6.17	-2.12	Tully: 6805' MD
6848.00	73.780	156.350	6569.99	76.34	-51.70	72.97	1674575.47	14248143.02	39°14'12.128"N	80°52'45.703"W	89.43	125.318	6.48	6.17	-2.08	
6895.00	76.040	156.100	6582.23	121.72	-93.23	91.27	1674593.76	14248101.51	39°14'11.717"N	80°52'45.472"W	130.46	136.048	4.84	4.81	-0.53	
6898.00†	76.142	156.122	6582.95	124.63	-95.89	92.44	1674594.94	14248098.85	39°14'11.691"N	80°52'45.457"W	133.19	136.048	3.48	3.40	0.73	Marcellus POE: 6898' MD
6942.00	77.640	156.440	6592.93	167.48	-135.12	109.68	1674612.17	14248059.83	39°14'11.303"N	80°52'45.238"W	174.03	140.933	3.48	3.40	0.72	
6989.00	81.690	156.950	6601.36	213.71	-177.58	127.97	1674630.45	14248017.19	39°14'10.883"N	80°52'45.007"W	218.88	144.222	8.68	8.62	1.09	
7036.00	85.930	157.420	6606.43	260.42	-220.64	146.08	1674648.55	14247974.15	39°14'10.457"N	80°52'44.777"W	264.92	146.492	9.08	9.02	1.00	
7083.00	89.570	157.480	6608.27	307.37	-264.00	164.09	1674666.55	14247930.80	39°14'10.028"N	80°52'44.549"W	310.84	148.137	7.75	7.74	0.13	
7131.00	89.820	157.690	6608.53	355.36	-308.38	182.39	1674684.85	14247886.45	39°14'09.590"N	80°52'44.317"W	358.28	149.397	0.68	0.52	0.44	
7225.00	89.850	156.190	6608.80	449.36	-394.86	219.21	1674721.65	14247800.00	39°14'08.734"N	80°52'43.851"W	451.53	150.963	1.60	0.03	-1.60	
7319.00	89.910	154.270	6608.99	543.33	-480.21	258.59	1674761.02	14247714.68	39°14'07.890"N	80°52'43.352"W	545.41	151.698	2.04	0.06	-2.04	
7415.00	90.150	155.210	6608.94	639.27	-567.03	299.56	1674801.97	14247627.90	39°14'07.032"N	80°52'42.833"W	641.29	152.153	1.01	0.25	0.98	
7510.00	89.940	155.980	6608.87	734.25	-653.54	338.81	1674841.20	14247541.42	39°14'06.176"N	80°52'42.335"W	736.14	152.597	0.84	-0.22	0.81	
7604.00	89.820	154.660	6609.07	828.22	-738.95	378.06	1674880.44	14247456.04	39°14'05.331"N	80°52'41.838"W	830.05	152.905	1.41	-0.13	-1.40	
7698.00	89.970	154.310	6609.24	922.15	-823.79	418.55	1674920.91	14247371.25	39°14'04.499"N	80°52'41.325"W	924.02	153.066	0.41	0.16	-0.37	
7792.00	90.150	156.610	6609.14	1016.12	-909.29	457.59	1674959.93	14247285.78	39°14'03.647"N	80°52'40.830"W	1017.93	153.287	2.45	0.19	2.45	
7886.00	90.090	158.910	6608.94	1110.10	-986.29	493.16	1674995.49	14247198.81	39°14'02.786"N	80°52'40.379"W	1111.67	153.665	2.45	-0.06	2.45	
7980.00	90.000	159.790	6608.87	1204.00	-1084.25	526.31	1675028.63	14247110.89	39°14'01.917"N	80°52'39.960"W	1205.24	154.107	0.94	-0.10	0.94	
8074.00	90.000	158.690	6608.87	1297.90	-1172.14	559.63	1675061.93	14247023.03	39°14'01.047"N	80°52'39.538"W	1298.89	154.478	1.17	0.00	-1.17	
8169.00	90.120	159.570	6608.77	1392.82	-1260.91	593.47	1675095.76	14246934.30	39°14'00.170"N	80°52'39.109"W	1393.59	154.795	0.93	0.13	0.93	
8263.00	89.970	157.940	6608.70	1486.75	-1348.52	627.53	1675129.81	14246846.72	39°13'59.303"N	80°52'38.678"W	1487.38	155.045	1.74	-0.16	-1.73	
8357.00	90.090	158.270	6608.65	1580.73	-1435.74	662.59	1675164.85	14246759.54	39°13'58.441"N	80°52'38.234"W	1581.26	155.227	0.37	0.13	0.35	



# Actual Wellpath Report

Cool Unit 2H AWP Proj: 16411'

Page 6 of 11



REFERENCE WELLPATH IDENTIFICATION	
Operator	ANTERO RESOURCES CORPORATION
Area	Doddridge Co., WV
Field	Doddridge
Facility	Stanley Pad
Slot	Slot #03
Well	Cool Unit 2H
Wellbore	Cool Unit 2H AWB

MD (ft)	Inclination (°)	Azimuth (°)	TVD (ft)	Vert Sect (ft)	North (ft)	East (ft)	Grid East (JUS ft)	Grid North (JUS ft)	Latitude	Longitude	Closure Dist (ft)	Closure Dir (°)	DLS (°/100ft)	Build Rate (°/100ft)	Turn Rate (°/100ft)	Comments
8451.00	90.030	158.620	6608.55	1674.68	-1523.17	697.12	1675199.37	142456672.15	39°13'57.576"N	80°52'37.797"W	1675.12	155.407	0.38	-0.06	0.37	
8546.00	90.000	158.280	6608.52	1769.84	-1611.52	732.02	1675234.25	14245883.82	39°13'56.702"N	80°52'37.355"W	1769.99	155.571	0.36	-0.03	-0.36	
8641.00	90.060	157.580	6608.47	1864.62	-1699.56	767.71	1675269.93	14245495.82	39°13'55.832"N	80°52'36.903"W	1864.91	155.691	0.74	0.06	-0.74	
8735.00	89.880	156.550	6608.52	1958.61	-1786.13	804.34	1675306.55	14245409.29	39°13'54.976"N	80°52'36.439"W	1958.88	155.757	1.11	-0.19	-1.10	
8830.00	89.880	158.140	6608.72	2053.60	-1873.80	840.93	1675343.12	14246321.65	39°13'54.109"N	80°52'35.975"W	2053.85	155.830	1.67	0.00	1.67	
8924.00	90.310	158.760	6608.57	2147.56	-1961.23	875.46	1675377.64	14246234.26	39°13'53.244"N	80°52'35.538"W	2147.75	155.945	0.80	0.46	0.66	
9019.00	90.220	160.800	6608.13	2242.42	-2050.37	908.29	1675410.46	14246145.16	39°13'52.362"N	80°52'34.711"W	2242.54	156.107	2.15	-0.09	-2.15	
9113.00	90.220	158.740	6607.77	2336.28	-2138.56	940.79	1675442.95	14246057.00	39°13'51.490"N	80°52'34.111"W	2336.35	156.284	2.19	0.00	-2.19	
9207.00	90.150	157.280	6607.46	2430.25	-2225.72	975.99	1675478.13	14245969.87	39°13'50.628"N	80°52'34.265"W	2430.31	156.322	1.55	-0.07	-1.55	
9301.00	90.180	153.580	6607.19	2524.21	-2311.19	1015.07	1675517.19	14245884.43	39°13'49.783"N	80°52'33.770"W	2524.28	156.289	3.94	0.03	-3.94	
9396.00	90.120	153.020	6606.94	2619.04	-2396.06	1057.75	1675559.86	14245799.60	39°13'48.944"N	80°52'33.229"W	2619.15	156.181	0.59	-0.06	-0.59	
9490.00	90.090	155.350	6606.77	2712.94	-2480.68	1098.69	1675600.77	14245715.02	39°13'48.107"N	80°52'32.710"W	2713.09	156.112	2.48	-0.03	2.48	
9584.00	89.850	153.680	6606.82	2806.87	-2565.53	1139.13	1675641.20	14245630.20	39°13'47.268"N	80°52'32.198"W	2807.05	156.058	1.79	-0.26	-1.78	
9679.00	90.120	154.020	6606.85	2901.75	-2650.80	1181.00	1675683.05	14245544.96	39°13'46.424"N	80°52'31.667"W	2901.98	155.986	0.46	0.28	0.36	
9773.00	90.280	159.690	6606.52	2995.71	-2737.20	1217.93	1675719.97	14245458.60	39°13'45.570"N	80°52'31.199"W	2995.93	156.013	6.03	0.17	6.03	
9867.00	90.220	156.720	6606.11	3089.67	-2824.47	1252.83	1675754.95	14245371.36	39°13'44.707"N	80°52'30.757"W	3089.86	156.080	3.16	-0.06	-3.16	
9962.00	90.000	155.620	6605.92	3184.66	-2911.37	1291.21	1675793.22	14245284.50	39°13'43.847"N	80°52'30.271"W	3184.85	156.082	1.18	-0.23	-1.16	
10057.00	90.250	152.850	6605.72	3279.57	-2996.92	1332.50	1675834.49	14245198.98	39°13'43.001"N	80°52'29.748"W	3279.80	156.029	2.93	0.26	-2.92	
10151.00	90.220	149.520	6605.33	3373.12	-3079.27	1377.80	1675879.78	14245116.67	39°13'42.187"N	80°52'29.174"W	3373.46	155.894	3.54	-0.03	-3.54	
10246.00	90.770	149.960	6604.51	3467.41	-3161.32	1425.87	1675927.63	14245034.85	39°13'41.375"N	80°52'28.567"W	3467.92	155.726	0.74	0.58	0.46	
10340.00	90.990	155.340	6603.07	3561.13	-3244.77	1468.84	1675970.78	14244951.23	39°13'40.550"N	80°52'28.020"W	3561.74	155.645	5.73	0.23	5.72	
10435.00	90.860	156.460	6601.53	3656.10	-3331.48	1507.82	1676009.55	14244864.56	39°13'39.692"N	80°52'27.528"W	3656.73	155.651	1.19	-0.14	1.18	
10530.00	90.890	155.470	6600.08	3751.08	-3418.23	1546.31	1676048.22	14244777.84	39°13'38.834"N	80°52'27.038"W	3751.71	155.659	1.04	0.03	-1.04	
10624.00	90.220	155.720	6599.17	3845.06	-3503.83	1585.15	1676087.04	14244692.28	39°13'37.988"N	80°52'26.546"W	3845.71	155.688	0.76	-0.71	0.27	
10719.00	90.280	158.140	6598.76	3940.05	-3589.12	1622.37	1676124.25	14244604.92	39°13'37.123"N	80°52'26.075"W	3940.68	155.688	2.55	0.06	2.55	
10813.00	90.280	159.680	6598.30	4033.98	-3678.92	1656.19	1676158.06	14244517.25	39°13'36.266"N	80°52'25.647"W	4034.53	155.763	1.64	0.00	1.64	
10907.00	90.280	161.000	6597.84	4127.79	-3767.44	1687.82	1676189.67	14244428.77	39°13'35.381"N	80°52'25.246"W	4128.23	155.868	1.40	0.00	1.40	
11003.00	90.220	161.300	6597.42	4223.50	-3858.29	1718.83	1676220.67	14244337.96	39°13'34.482"N	80°52'24.854"W	4223.83	155.987	0.32	-0.06	0.31	
11097.00	90.150	159.750	6597.11	4317.29	-3946.91	1750.17	1676252.00	14244249.38	39°13'33.606"N	80°52'24.457"W	4317.54	156.086	1.65	-0.07	-1.65	
11192.00	89.910	157.450	6597.07	4412.23	-4035.35	1784.93	1676286.65	14244160.97	39°13'32.731"N	80°52'24.018"W	4412.45	156.140	2.43	-0.25	-2.42	



# Actual Wellpath Report

Cool Unit 2H AWP Proj: 16411'  
Page 7 of 11



REFERENCE WELLPATH IDENTIFICATION	
Operator	ANTERO RESOURCES CORPORATION
Area	Doddridge Co., WV
Field	Doddridge
Facility	Stanley Pad
Slot	Slot #03
Well	Cool Unit 2H
Wellbore	Cool Unit 2H AWB

WELLPATH DATA (206 stations)																
MD (ft)	Inclination (°)	Azimuth (°)	TVD (ft)	Vert Sect (ft)	North (ft)	East (ft)	Grid East (US ft)	Grid North (US ft)	Latitude	Longitude	Closure Dist (ft)	Closure Dir (°)	DLS (F/100ft)	Build Rate (F/100ft)	Turn Rate (F/100ft)	Comments
11286.00	90.090	158.700	6597.07	4506.20	-4122.55	1819.93	1676321.73	14244073.80	39°13'31.869"N	80°52'23.574"W	4506.39	156.181	1.34	0.19	1.33	
11381.00	90.000	158.500	6596.99	4601.15	-4211.00	1854.59	1676356.38	14243985.39	39°13'30.994"N	80°52'23.135"W	4601.31	156.231	0.23	-0.09	-0.21	
11476.00	90.000	157.800	6596.99	4696.12	-4299.18	1889.95	1676391.72	14243897.25	39°13'30.122"N	80°52'22.687"W	4696.26	156.269	0.74	0.00	-0.74	
11571.00	89.940	157.730	6597.04	4791.10	-4387.11	1925.90	1676427.66	14243809.35	39°13'29.253"N	80°52'22.232"W	4791.22	156.299	0.10	-0.06	-0.07	
11665.00	90.090	157.590	6597.02	4885.09	-4474.06	1961.63	1676463.37	14243722.44	39°13'28.393"N	80°52'21.780"W	4885.20	156.325	0.22	0.16	-0.15	
11759.00	89.970	156.560	6596.97	4979.09	-4560.63	1998.24	1676499.97	14243635.90	39°13'27.537"N	80°52'21.316"W	4979.19	156.359	1.10	-0.13	-1.10	
11853.00	90.030	156.450	6596.97	5073.08	-4646.84	2035.72	1676537.43	14243549.73	39°13'26.684"N	80°52'20.841"W	5073.19	156.342	0.13	0.06	-0.12	
11948.00	90.060	156.490	6596.89	5168.08	-4733.94	2073.64	1676575.34	14243462.66	39°13'25.823"N	80°52'20.361"W	5168.19	156.345	0.05	0.03	0.04	
12042.00	90.000	156.750	6596.84	5262.08	-4820.22	2110.95	1676612.63	14243376.41	39°13'24.969"N	80°52'19.889"W	5262.19	156.350	0.28	-0.06	0.28	
12136.00	90.000	156.950	6596.84	5356.08	-4906.65	2147.90	1676649.57	14243290.02	39°13'24.114"N	80°52'19.420"W	5356.18	156.358	0.21	0.00	0.21	
12231.00	89.940	156.960	6596.89	5451.08	-4994.07	2185.09	1676686.74	14243202.63	39°13'23.250"N	80°52'18.950"W	5451.18	156.369	0.06	-0.06	0.01	
12326.00	90.060	157.050	6596.89	5546.08	-5081.52	2222.20	1676723.84	14243115.22	39°13'22.385"N	80°52'18.480"W	5546.17	156.380	0.16	0.13	0.09	
12420.00	90.120	156.710	6596.74	5640.08	-5167.97	2259.11	1676760.73	14243028.80	39°13'21.530"N	80°52'18.012"W	5640.17	156.388	0.37	0.06	-0.36	
12514.00	90.030	155.970	6596.62	5734.08	-5254.07	2296.83	1676798.44	14242942.74	39°13'20.679"N	80°52'17.534"W	5734.17	156.387	0.79	-0.10	-0.79	
12608.00	90.000	155.750	6596.60	5828.07	-5339.85	2335.28	1676836.87	14242856.99	39°13'19.830"N	80°52'17.047"W	5828.16	156.379	0.24	-0.03	-0.23	
12703.00	90.090	156.610	6596.52	5923.06	-5426.76	2373.64	1676875.22	14242770.12	39°13'18.971"N	80°52'16.561"W	5923.16	156.376	0.91	0.09	0.91	
12798.00	89.970	156.940	6596.52	6018.06	-5514.06	2411.11	1676912.67	14242682.85	39°13'18.107"N	80°52'16.087"W	6018.16	156.382	0.40	-0.19	0.35	
12892.00	90.030	155.640	6596.57	6112.06	-5600.12	2448.90	1676950.45	14242596.82	39°13'17.256"N	80°52'15.608"W	6112.16	156.380	1.39	0.13	-1.38	
12987.00	90.180	156.000	6596.40	6207.05	-5686.79	2487.82	1676989.35	14242510.19	39°13'16.399"N	80°52'15.116"W	6207.15	156.372	0.41	0.16	0.38	
13081.00	90.180	154.070	6596.10	6301.00	-5772.00	2527.49	1677029.00	14242425.02	39°13'15.556"N	80°52'14.613"W	6301.12	156.352	2.05	0.00	-2.05	
13176.00	90.060	155.340	6595.90	6395.94	-5857.89	2568.08	1677069.58	14242339.16	39°13'14.707"N	80°52'14.099"W	6396.08	156.329	1.34	-0.13	1.34	
13271.00	90.120	157.490	6595.75	6490.93	-5944.95	2606.09	1677102.47	14242252.14	39°13'13.848"N	80°52'13.617"W	6491.08	156.329	2.26	0.06	2.26	
13365.00	90.090	158.900	6595.58	6584.90	-6032.22	2641.00	1677142.47	14242164.90	39°13'12.983"N	80°52'13.175"W	6585.03	156.355	1.50	-0.03	1.50	
13459.00	90.000	159.350	6595.51	6678.82	-6120.05	2674.50	1677175.95	14242077.10	39°13'12.114"N	80°52'12.751"W	6678.92	156.394	0.49	-0.10	0.48	
13553.00	89.970	158.850	6595.53	6772.73	-6207.86	2708.03	1677209.47	14241989.33	39°13'11.246"N	80°52'12.327"W	6772.81	156.432	0.53	-0.03	-0.53	
13648.00	90.060	157.750	6595.51	6867.70	-6296.13	2743.16	1677244.58	14241901.09	39°13'10.373"N	80°52'11.882"W	6867.76	156.458	1.16	0.09	-1.16	
13742.00	90.150	157.120	6595.34	6961.69	-6382.93	2779.23	1677280.64	14241814.33	39°13'09.514"N	80°52'11.428"W	6961.75	156.471	0.68	0.10	-0.67	
13837.00	89.320	155.130	6595.27	7056.68	-6469.80	2817.67	1677319.07	14241727.50	39°13'08.655"N	80°52'10.939"W	7056.74	156.466	2.27	-0.87	-2.09	
13931.00	90.090	154.290	6596.26	7150.62	-6554.72	2857.83	1677359.21	14241642.84	39°13'07.815"N	80°52'10.430"W	7150.69	156.443	1.21	0.82	-0.89	
14025.00	90.120	154.130	6596.09	7244.53	-6639.42	2898.73	1677400.09	14241557.94	39°13'06.977"N	80°52'09.912"W	7244.62	156.414	0.17	0.03	-0.17	





# Actual Wellpath Report

Cool Unit 2H AWP Proj: 16411'  
Page 8 of 11



REFERENCE WELLPATH IDENTIFICATION	
Operator	ANTERO RESOURCES CORPORATION
Area	Doddridge Co., WV
Field	Doddridge
Facility	Stanley Pad
Slot	Slot #03
Well	Cool Unit 2H
Wellbore	Cool Unit 2H AWB

WELLPATH DATA (206 stations)																
MD (ft)	Inclination (°)	Azimuth (°)	TVD (ft)	Vert Sect (ft)	North (ft)	East (ft)	Grid East (ft)	Grid North (ft)	Latitude	Longitude	Closure Dist (ft)	Closure Dir (°)	DLS (ft/100ft)	Build Rate (ft/100ft)	Turn Rate (ft/100ft)	Comments
14120.00	90.030	154.910	6595.96	7339.46	-6725.18	2939.59	1677440.95	14241472.21	39°13'06.129"N	80°52'09.394"W	7339.57	156.390	0.83	-0.09	0.82	
14214.00	90.250	156.030	6595.73	7433.43	-6810.70	2978.62	1677479.95	14241386.73	39°13'05.283"N	80°52'08.900"W	7433.56	156.378	1.21	0.23	1.19	
14309.00	89.970	156.780	6595.55	7528.43	-6897.75	3016.66	1677517.98	14241299.72	39°13'04.423"N	80°52'08.418"W	7528.56	156.378	0.82	-0.29	0.77	
14404.00	90.120	156.660	6595.48	7623.43	-6985.01	3054.22	1677555.53	14241212.49	39°13'03.560"N	80°52'07.943"W	7623.55	156.382	0.19	0.16	-0.11	
14498.00	89.940	157.850	6595.43	7717.42	-7071.69	3090.56	1677591.85	14241125.84	39°13'02.702"N	80°52'07.482"W	7717.54	156.393	1.28	-0.19	1.27	
14592.00	90.030	158.880	6595.45	7811.38	-7159.07	3125.22	1677626.50	14241038.50	39°13'01.838"N	80°52'07.044"W	7811.49	156.417	1.10	0.10	1.10	
14687.00	90.030	157.720	6595.40	7906.34	-7247.34	3160.35	1677661.61	14240950.27	39°13'00.965"N	80°52'06.599"W	7906.43	156.439	1.22	0.00	-1.22	
14782.00	90.030	156.970	6595.35	8001.34	-7334.68	3197.70	1677698.95	14240862.96	39°13'00.101"N	80°52'06.126"W	8001.43	156.444	1.84	0.00	-1.84	
14875.00	90.000	156.140	6595.33	8094.33	-7419.68	3235.45	1677736.68	14240778.00	39°12'59.261"N	80°52'05.648"W	8094.42	156.440	0.19	-0.03	0.18	
14969.00	90.060	156.830	6595.03	8282.32	-7591.66	3311.38	1677812.58	14240606.09	39°12'57.560"N	80°52'04.686"W	8188.42	156.435	0.33	0.16	-0.29	
15157.00	90.000	157.350	6594.98	8376.32	-7678.24	3347.97	1677849.16	14240519.54	39°12'56.704"N	80°52'04.223"W	8282.42	156.434	1.03	-0.10	1.02	
15252.00	90.060	159.020	6594.93	8471.29	-7766.44	3383.27	1677884.45	14240431.38	39°12'55.831"N	80°52'03.776"W	8471.37	156.461	1.76	0.06	1.76	
15346.00	89.910	158.880	6594.96	8565.21	-7854.16	3417.04	1677918.20	14240343.69	39°12'54.964"N	80°52'03.349"W	8565.28	156.488	0.22	-0.16	-0.15	
15441.00	89.970	158.540	6595.06	8660.16	-7942.68	3451.53	1677952.68	14240255.20	39°12'54.088"N	80°52'02.912"W	8660.21	156.512	0.36	0.06	-0.36	
15535.00	90.250	155.790	6594.88	8754.14	-8029.30	3488.01	1677989.14	14240168.52	39°12'53.232"N	80°52'02.451"W	8754.19	156.519	2.94	0.30	-2.93	
15629.00	90.090	154.210	6594.60	8848.10	-8114.49	3527.73	1678028.85	14240083.46	39°12'52.389"N	80°52'01.947"W	8848.16	156.503	1.69	-0.17	-1.68	
15723.00	90.030	155.740	6594.50	8942.05	-8199.67	3567.49	1678068.59	14239998.32	39°12'51.547"N	80°52'01.444"W	8942.12	156.487	1.63	-0.06	1.63	
15818.00	90.220	156.410	6594.29	9037.05	-8286.50	3606.02	1678107.10	14239911.52	39°12'50.688"N	80°52'00.956"W	9037.12	156.483	0.73	0.20	0.71	
15912.00	90.180	156.280	6593.96	9131.04	-8372.60	3643.73	1678144.80	14239825.45	39°12'49.836"N	80°52'00.478"W	9131.12	156.481	0.14	-0.04	-0.14	
16006.00	90.150	156.110	6593.69	9225.04	-8458.61	3681.67	1678182.73	14239739.48	39°12'48.986"N	80°51'59.998"W	9225.12	156.479	0.18	-0.03	-0.18	
16101.00	90.180	154.010	6593.42	9319.99	-8544.74	3721.73	1678222.77	14239653.38	39°12'48.134"N	80°51'59.491"W	9320.08	156.464	2.21	0.03	-2.21	
16195.00	90.220	153.860	6593.09	9413.88	-8629.18	3763.03	1678264.05	14239568.98	39°12'47.299"N	80°51'58.968"W	9413.99	156.439	0.17	0.04	-0.16	
16289.00	90.220	154.110	6592.73	9507.78	-8713.66	3804.26	1678305.27	14239484.54	39°12'46.463"N	80°51'58.445"W	9507.90	156.415	0.27	0.00	0.27	
16387.00	90.060	153.880	6592.49	9605.67	-8801.74	3847.23	1678348.22	14239396.49	39°12'45.592"N	80°51'57.901"W	9605.82	156.390	0.29	-0.16	-0.23	
16411.00	90.060	153.880	6592.47	9629.64	-8823.28	3857.79	1678358.78	14239374.95	39°12'45.379"N	80°51'57.767"W	9629.79	156.384	0.00	0.00	0.00	Projected MD at TD: 16411'



# Actual Wellpath Report

Cool Unit 2H AWP Proj: 16411'

Page 9 of 11



## REFERENCE WELLPATH IDENTIFICATION

Operator	Slot	Slot #03
ANTERO RESOURCES CORPORATION	Well	Cool Unit 2H
Area	Wellbore	Cool Unit 2H AWB
Field		
Facility		

## HOLE & CASING SECTIONS - Ref Wellbore: Cool Unit 2H AWB Ref Wellpath: Cool Unit 2H AWP Proj: 16411'

String/Diameter	Start MD [ft]	End MD [ft]	Interval [ft]	Start TVD [ft]	End TVD [ft]	Start N/S [ft]	Start E/W [ft]	End N/S [ft]	End E/W [ft]
20in Conductor	25.00	105.00	80.00	25.00	105.00	0.00	0.00	-0.03	0.33
17.5in Open Hole	105.00	560.20	455.20	105.00	560.19	-0.03	0.33	0.35	-1.00
13.375in Casing Surface	25.00	560.20	535.20	25.00	560.19	0.00	0.00	0.35	-1.00
12.25in Open Hole	560.20	2578.40	2018.20	560.19	2578.33	0.35	-1.00	7.98	-7.57
9.625in Casing Intermediate	25.00	2578.40	2553.40	25.00	2578.33	0.00	0.00	7.98	-7.57
8.75in Open Hole	2578.40	6300.00	3721.60	2578.33	6242.60	7.98	-7.57	342.84	-75.21
8.5in Open Hole	6300.00	16411.00	10111.00	6242.60	6592.47	342.84	-75.21	-8823.28	3857.79
5.5in Casing Production	25.00	16411.00	16386.00	25.00	6592.47	0.00	0.00	-8823.28	3857.79

## TARGETS

Name	TVD [ft]	North [ft]	East [ft]	Grid East [US ft]	Grid North [US ft]	Latitude	Longitude	Shape
Cool Unit 2H POE Rev-1	6585.00	-80.08	80.67	1674583.17	14248114.65	39°14'11.847"N	80°52'45.606"W	point
Cool Unit 2H BHL Rev-1	6608.00	-8832.76	3848.33	1678349.32	14239365.48	39°12'45.285"N	80°51'57.868"W	point
Cool Unit 2H LP Rev-1	6608.00	-245.46	151.86	1674654.33	14247949.34	39°14'10.212"N	80°52'44.704"W	point



# Actual Wellpath Report

Cool Unit 2H AWP Proj: 16411'

Page 10 of 11



## REFERENCE WELLPATH IDENTIFICATION

Operator	Area	Field	Facility	Slot	Slot #03
ANTERO RESOURCES CORPORATION	Doddridge Co., WV	Doddridge	Stanley Pad	Well	Cool Unit 2H
				Wellbore	Cool Unit 2H AWB

## WELLPATH COMPOSITION - Ref Wellbore: Cool Unit 2H AWB Ref Wellpath: Cool Unit 2H AWP Proj: 16411'

Start MD (ft)	End MD (ft)	Positional Uncertainty Model	Log Name/Comment	Wellbore
25.00	517.00	Gyrodata standard - Drop gyro or Multi-shot	01_Gyrodata MS Gyro <17-1/2">(50-517')	Cool Unit 2H AWB
517.00	2525.00	ISCWSA MWD, Rev. 4 (Standard)	02_Panther EM <12-1/4">(517)-(591'-2525')	Cool Unit 2H AWB
2525.00	6240.00	ISCWSA MWD, Rev. 4 (Standard)	03_Panther EM <8-3/4">(2525)-(6240')	Cool Unit 2H AWB
6240.00	16387.00	BHI AutoTrak Curve (Short)	04_BH AT Curve <8-1/2">(6240)-(6284'-16387')	Cool Unit 2H AWB
16387.00	16411.00	Blind Drilling (std)	Projection to bit	Cool Unit 2H AWB



# Actual Wellpath Report

Cool Unit 2H AWP Proj: 16411'

Page 11 of 11



## REFERENCE WELLPATH IDENTIFICATION

Operator	Area	Field	Facility	Slot	Slot #03
ANTERO RESOURCES CORPORATION	Doddridge Co., WV	Doddridge	Stanley Pad	Well	Cool Unit 2H
				Wellbore	Cool Unit 2H AWB

## COMMENTS

### Wellpath general comments

API: 47-017-06834-0000  
 BHI Job #: 109390803  
 Rig: Patterson 342  
 Duration: 09/07/2018-09/10/2018  
 Gyrodatta MS Gyro <17-1/2"> (50'-517')  
 Panther EM <12-1/4"> (517')(591-2525)  
 Panther EM <8-3/4"> (2525')(2629'-6240')  
 BHI AT Curve <8-1/2"> (6240')(6284'-16387')  
 Middlesex: 6512' MD  
 Burkett: 6718' MD  
 Tully: 6805' MD  
 Marcellus POE: 6898' MD  
 Projected MD at TD: 16411'