



ANTERO RESOURCES CORPORATION

Location: Doddridge Co., WV
 Field: Doddridge
 Facility: Alexander Pad

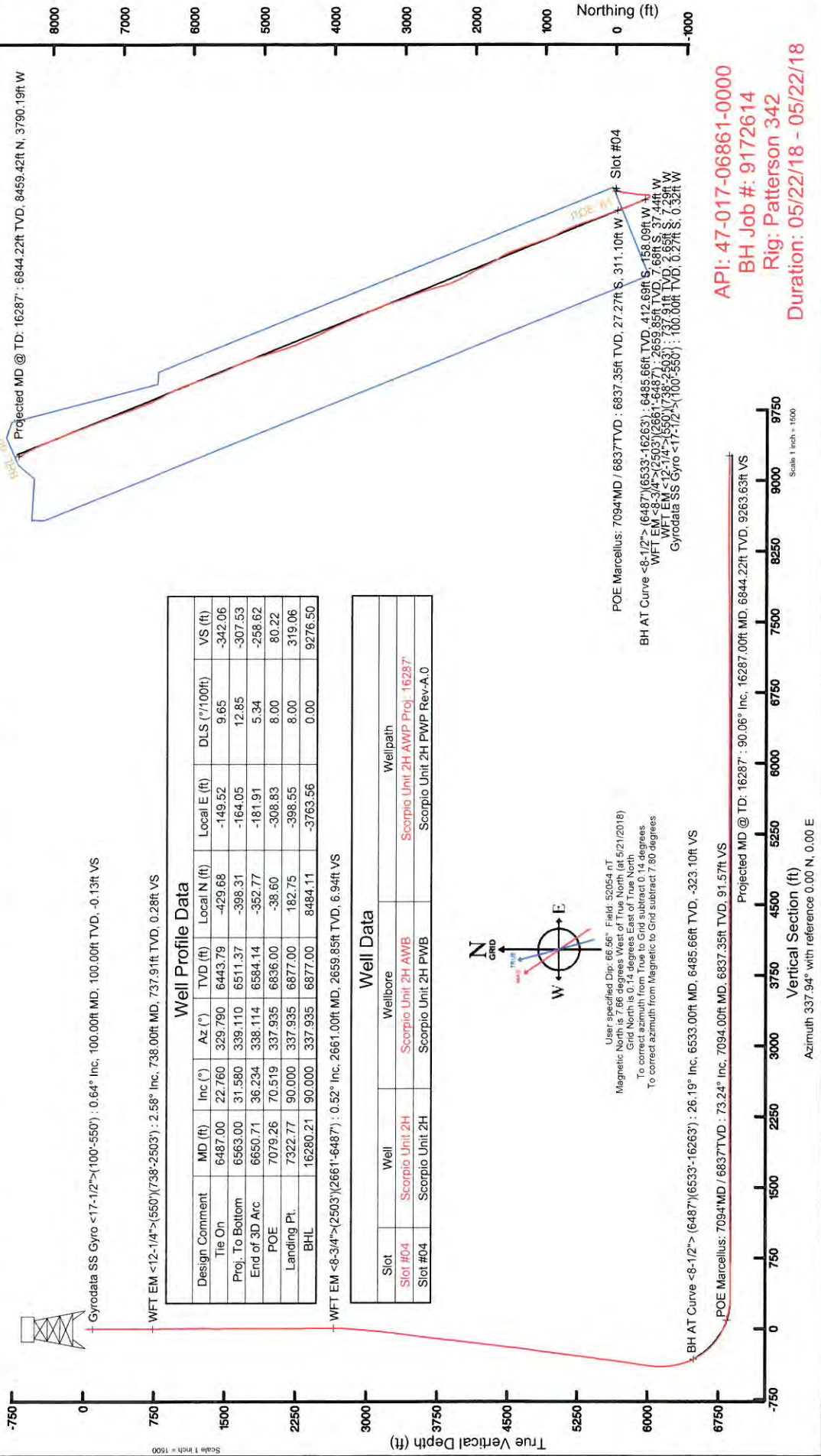
Slot: Slot #04
 Well: Scorpio Unit 2H
 Wellbore: Scorpio Unit 2H PWB



Location Information

Facility Name	Grid East (US ft)	Grid North (US ft)	Latitude	Longitude
Alexander Pad	1703508.855	14284263.322	39°20'08.720"N	80°46'31.620"W
Slot	Local E (ft)	Grid North (US ft)	Latitude	Longitude
Slot #04	9.10	1703504.906	39°20'08.810"N	80°46'31.670"W
Comment Scorpio Unit 2H				
Patterson 342 (RKB) to Ground level (At Slot: Slot #04) : 25ft				
Mean Sea Level to Ground level (At Slot: Slot #04) : -1181ft				
Patterson 342 (RKB) to Mean Sea Level : 1206ft				

Plot reference wellpath is Scorpio Unit 2H PWB Rev-A.0	Grid System: NAD27 / UTM Zone 17 North, US feet
True vertical depths are referenced to Patterson 342 (RKB)	North Reference: Grid north
Measured depths are referenced to Patterson 342 (RKB)	Scale: True distance
Patterson 342 (RKB) to Mean Sea Level: 1206 feet	Depths are in feet
Mean Sea Level to Ground level (At Slot: Slot #04): -1181 feet	Created by: mccreth on 2018-05-30
Coordinates are in feet referenced to Slot	Database: WA_MPL_EASTERNUS_Dein



05/03/2019

API: 47-017-06861-0000
 BH Job #: 9172614
 Rig: Patterson 342
 Duration: 05/22/18 - 05/22/18



Actual Wellpath Report

Scorpio Unit 2H AWP Proj: 16287'

Page 1 of 10



REFERENCE WELLPATH IDENTIFICATION		
Operator	ANTERO RESOURCES CORPORATION	Slot #04
Area	Doddridge Co., WV	Scorpio Unit 2H
Field	Doddridge	Scorpio Unit 2H AWB
Facility	Alexander Pad	

REPORT SETUP INFORMATION	
Projection System	NAD27 / UTM Zone 17 North, US feet
North Reference	Grid
Scale	0.999605
Convergence at slot	0.14° East
Software System	WellArchitect® 5.1
User	McCrerib
Report Generated	5/30/2018 at 2:02:14 PM
Database/Source file	WA_MPL_EASTERNUS_Defm/Scorpio_Unit_2H_AWP_Proj_16287_.xml

WELLPATH LOCATION						
	Local coordinates		Grid coordinates		Geographic coordinates	
	North[ft]	East[ft]	Easting[US ft]	Northing[US ft]	Latitude	Longitude
Slot Location	9.10	-3.95	1703904.91	14284272.41	39°20'08.810"N	80°46'31.670"W
Facility Reference Pt			1703908.86	14284263.32	39°20'08.720"N	80°46'31.620"W
Field Reference Pt			0.00	0.00	0°00'00.000"	85°29'19.301"W

WELLPATH DATUM	
Calculation method	Minimum curvature
Horizontal Reference Pt	Slot
Vertical Reference Pt	Patterson 342 (RKB)
MD Reference Pt	Patterson 342 (RKB)
Field Vertical Reference	Mean Sea Level
	Patterson 342 (RKB) to Facility Vertical Datum
	Patterson 342 (RKB) to Mean Sea Level
	Patterson 342 (RKB) to Ground Level at Slot (Slot #04)
	Section Origin
	Section Azimuth
	25.00ft
	1206.00ft
	25.00ft
	N 0.00, E 0.00 ft
	337.94°

05/03/2019



Actual Wellpath Report

Scorpio Unit 2H AWP Proj: 16287
Page 2 of 10



REFERENCE WELLPATH IDENTIFICATION	
Operator	ANTERO RESOURCES CORPORATION
Area	Doddridge Co., WV
Field	Doddridge
Facility	Alexander Pad
Slot #04	Scorpio Unit 2H
Well	Scorpio Unit 2H AWB
Wellbore	Scorpio Unit 2H AWB

WELLPATH DATA (205 stations) † = interpolated/extrapolated station																
MD [ft]	Inclination [°]	Azimuth [°]	TVD [ft]	Vert Sect [ft]	North [ft]	East [ft]	Grid East [US ft]	Grid North [US ft]	Latitude	Longitude	Closure Dist [ft]	Closure Dir [°]	DLS [°/100ft]	Build Rate [°/100ft]	Turn Rate [°/100ft]	Comments
0.00†	0.00	229.330	0.00	0.00	0.00	0.00	1703904.91	14284272.41	39°20'08.810"N	80°46'31.670"W	0.00	0.000	0.00	0.00	0.00	
25.00	0.00	229.330	25.00	0.00	0.00	0.00	1703904.91	14284272.41	39°20'08.810"N	80°46'31.670"W	0.00	0.000	0.00	0.00	0.00	
100.00	0.640	229.330	100.00	-0.13	-0.27	-0.32	1703904.59	14284272.14	39°20'08.807"N	80°46'31.674"W	0.42	229.330	0.85	0.85	-174.23	Gyrodata SS Gyro <17-1/2">(100'-550')
125.00	0.920	231.090	125.00	-0.24	-0.49	-0.58	1703904.33	14284271.92	39°20'08.805"N	80°46'31.677"W	0.76	229.795	1.12	1.12	7.04	
150.00	0.380	226.620	149.99	-0.32	-0.67	-0.80	1703904.11	14284271.74	39°20'08.803"N	80°46'31.680"W	1.04	229.792	2.17	-2.16	-17.88	
175.00	0.460	230.150	174.99	-0.39	-0.79	-0.93	1703903.97	14284271.62	39°20'08.802"N	80°46'31.682"W	1.23	229.607	0.34	0.32	14.12	
200.00	0.460	220.620	199.99	-0.46	-0.93	-1.08	1703903.83	14284271.48	39°20'08.801"N	80°46'31.684"W	1.43	229.015	0.31	0.00	-38.12	
225.00	0.440	209.250	224.99	-0.57	-1.09	-1.19	1703903.72	14284271.32	39°20'08.799"N	80°46'31.685"W	1.62	227.344	0.37	-0.08	-45.48	
250.00	0.410	195.530	249.99	-0.70	-1.26	-1.26	1703903.65	14284271.15	39°20'08.798"N	80°46'31.686"W	1.78	224.872	0.42	-0.12	-54.88	
275.00	0.320	207.520	274.99	-0.82	-1.41	-1.32	1703903.59	14284271.00	39°20'08.796"N	80°46'31.687"W	1.93	222.952	0.47	-0.36	47.96	
300.00	0.320	231.130	299.99	-0.88	-1.52	-1.40	1703903.50	14284270.90	39°20'08.795"N	80°46'31.688"W	2.07	222.713	0.52	0.00	94.44	
325.00	0.420	219.650	324.99	-0.94	-1.63	-1.51	1703903.39	14284270.78	39°20'08.794"N	80°46'31.689"W	2.23	222.850	0.50	0.40	-45.92	
350.00	0.250	263.620	349.99	-0.97	-1.71	-1.63	1703903.28	14284270.71	39°20'08.793"N	80°46'31.691"W	2.36	223.590	1.18	-0.68	175.88	
375.00	0.290	252.240	374.99	-0.95	-1.73	-1.74	1703903.16	14284270.68	39°20'08.793"N	80°46'31.692"W	2.46	225.115	0.27	0.16	-45.52	
400.00	0.320	229.380	399.99	-0.97	-1.80	-1.85	1703903.05	14284270.62	39°20'08.792"N	80°46'31.694"W	2.58	225.870	0.50	0.12	-91.44	
425.00	0.230	222.080	424.99	-1.02	-1.88	-1.94	1703902.96	14284270.53	39°20'08.791"N	80°46'31.695"W	2.70	225.890	0.39	-0.36	-29.20	
450.00	0.120	252.040	449.99	-1.04	-1.93	-2.00	1703902.91	14284270.49	39°20'08.791"N	80°46'31.696"W	2.78	226.059	0.56	-0.44	119.84	
475.00	0.360	267.720	474.99	-1.01	-1.94	-2.10	1703902.80	14284270.48	39°20'08.791"N	80°46'31.697"W	2.86	227.335	0.99	0.96	62.72	
500.00	0.500	243.810	499.99	-0.99	-1.99	-2.28	1703902.63	14284270.43	39°20'08.790"N	80°46'31.699"W	3.03	228.884	0.90	0.56	-95.64	
525.00	0.390	226.670	524.99	-1.03	-2.10	-2.44	1703902.47	14284270.32	39°20'08.789"N	80°46'31.701"W	3.22	229.326	0.69	-0.44	-68.56	
550.00	0.340	241.930	549.99	-1.07	-2.19	-2.57	1703902.34	14284270.23	39°20'08.788"N	80°46'31.703"W	3.37	229.534	0.44	-0.20	61.04	
738.00	2.580	267.360	737.91	0.28	-2.65	-7.29	1703897.62	14284269.77	39°20'08.784"N	80°46'31.763"W	7.75	250.034	1.21	1.19	13.53	WFT EM <12-1/4">(550')(738'-2503')
829.00	3.250	260.710	828.80	1.53	-3.16	-11.88	1703893.03	14284269.26	39°20'08.779"N	80°46'31.821"W	12.29	255.112	0.82	0.74	-7.31	
923.00	3.790	251.890	922.62	2.34	-4.55	-17.46	1703888.45	14284267.86	39°20'08.765"N	80°46'31.892"W	18.04	255.383	0.81	0.57	-9.38	
1018.00	4.470	250.100	1017.37	2.69	-6.79	-23.93	1703880.90	14284265.63	39°20'08.743"N	80°46'31.975"W	24.87	254.157	0.73	0.72	-1.88	
1112.00	3.750	246.780	1111.13	2.77	-9.25	-30.20	1703874.72	14284263.17	39°20'08.719"N	80°46'32.055"W	31.58	252.970	0.81	-0.77	-3.53	
1207.00	2.700	241.940	1205.98	2.47	-11.53	-35.03	1703869.89	14284260.89	39°20'08.697"N	80°46'32.116"W	36.87	251.784	1.14	-1.11	-5.09	
1301.00	1.630	228.500	1299.91	1.80	-13.45	-37.98	1703866.94	14284258.97	39°20'08.678"N	80°46'32.154"W	40.29	250.495	1.25	-1.14	-14.30	
1395.00	0.110	168.190	1393.90	1.26	-14.43	-38.96	1703865.96	14284257.99	39°20'08.668"N	80°46'32.166"W	41.55	249.681	1.68	-1.62	-64.16	
1490.00	0.590	36.880	1488.90	1.42	-14.13	-38.65	1703866.27	14284258.29	39°20'08.671"N	80°46'32.162"W	41.15	249.924	0.70	0.51	-138.22	



Actual Wellpath Report

Scorpio Unit 2H AWP Proj: 16287
Page 3 of 10



REFERENCE WELLPATH IDENTIFICATION		Slot	Slot #04
Operator	ANTERO RESOURCES CORPORATION		Well
Area	Doddridge Co., WV		Scorpio Unit 2H
Field	Doddridge		Scorpio Unit 2H AWB
Facility	Alexander Pad		

WELLPATH DATA (205 stations)																
MD [ft]	Inclination [°]	Azimuth [°]	TVD [ft]	Vert Sect [ft]	North [ft]	East [ft]	Grid East [US ft]	Grid North [US ft]	Latitude	Longitude	Closure Dist [ft]	Closure Dir [°]	DLS ["/100ft]	Build Rate ["/100ft]	Turn Rate ["/100ft]	Comments
1584.00	0.320	43.200	1582.89	1.78	-13.55	38.18	1703866.74	14284258.87	89°20'08.677"N	80°46'32.156"W	40.51	250.464	0.29	-0.29	6.72	
1678.00	0.120	147.620	1676.89	1.80	-13.44	37.95	1703866.97	14284258.98	89°20'08.678"N	80°46'32.153"W	40.26	250.499	0.39	-0.21	111.09	
1773.00	0.280	215.030	1771.89	1.57	-13.71	38.03	1703866.89	14284258.71	89°20'08.675"N	80°46'32.154"W	40.43	250.170	0.27	0.17	70.96	
1867.00	0.380	241.340	1865.89	1.41	-14.05	38.43	1703866.49	14284258.37	89°20'08.672"N	80°46'32.160"W	40.92	249.918	0.19	0.11	27.99	
1961.00	0.070	359.240	1959.89	1.43	-14.14	38.71	1703866.21	14284258.28	89°20'08.671"N	80°46'32.163"W	41.21	249.929	0.44	-0.33	125.43	
2056.00	0.380	32.350	2054.89	1.67	-13.82	38.54	1703866.38	14284258.60	89°20'08.674"N	80°46'32.161"W	40.94	250.275	0.34	0.33	34.85	
2150.00	0.600	24.510	2148.89	2.19	-13.11	38.17	1703866.75	14284259.31	89°20'08.681"N	80°46'32.156"W	40.36	251.047	0.24	0.23	-8.34	
2244.00	0.770	29.620	2242.88	2.92	-12.11	37.65	1703867.27	14284260.31	89°20'08.691"N	80°46'32.150"W	39.55	252.170	0.19	0.18	5.44	
2339.00	0.580	17.370	2337.87	3.68	-11.10	37.19	1703867.73	14284261.32	89°20'08.701"N	80°46'32.144"W	38.81	253.387	0.25	-0.20	-12.89	
2433.00	0.630	5.520	2431.87	4.51	-10.13	37.00	1703867.92	14284262.29	89°20'08.711"N	80°46'32.141"W	38.36	254.692	0.14	0.05	-12.61	
2503.00	0.720	353.850	2501.86	5.27	-9.31	37.01	1703867.91	14284263.11	89°20'08.719"N	80°46'32.141"W	38.16	255.884	0.23	0.13	-16.67	
2661.00	0.520	333.160	2659.85	6.94	-7.68	37.44	1703867.48	14284264.74	89°20'08.735"N	80°46'32.147"W	38.22	258.407	0.19	-0.13	-13.09	WFT EM <-8.3/4">(2661'-6487')
2756.00	4.060	208.060	2754.78	5.22	-10.27	39.22	1703862.85	14284254.93	89°20'08.710"N	80°46'32.169"W	40.54	255.332	4.61	3.73	-131.68	
2850.00	5.470	196.700	2848.45	-0.41	-17.49	42.07	1703862.85	14284254.93	89°20'08.638"N	80°46'32.206"W	45.56	247.422	1.80	1.50	-12.09	
2944.00	5.750	187.940	2942.00	-7.98	-26.45	44.01	1703860.91	14284245.98	89°20'08.550"N	80°46'32.231"W	51.35	238.995	0.96	0.30	-9.32	
3039.00	6.270	190.740	3036.48	-16.47	-36.26	45.63	1703859.29	14284236.17	89°20'08.453"N	80°46'32.252"W	58.29	231.531	0.63	0.55	2.95	
3133.00	6.810	194.000	3129.87	-25.29	-46.71	47.94	1703856.99	14284225.72	89°20'08.350"N	80°46'32.282"W	66.93	225.744	0.70	0.57	3.47	
3232.00	8.470	195.010	3227.99	-35.85	-59.45	51.25	1703853.68	14284212.99	89°20'08.224"N	80°46'32.324"W	78.49	220.763	1.68	1.68	1.02	
3326.00	8.860	192.360	3320.91	-47.36	-73.22	54.59	1703850.33	14284199.22	89°20'08.088"N	80°46'32.367"W	91.33	216.708	0.61	0.44	-2.82	
3421.00	9.130	190.560	3414.74	-59.75	-87.79	57.54	1703847.38	14284184.66	89°20'07.944"N	80°46'32.405"W	104.97	213.243	0.40	0.26	-1.89	
3515.00	8.210	183.270	3507.67	-72.10	-101.83	59.29	1703845.63	14284170.63	89°20'07.805"N	80°46'32.428"W	117.83	210.213	1.52	-0.98	-7.76	
3609.00	7.460	182.080	3600.79	-83.74	-114.63	59.90	1703845.03	14284157.83	89°20'07.679"N	80°46'32.436"W	129.33	207.590	0.82	-0.80	-1.27	
3704.00	7.240	181.810	3695.19	-94.84	-126.77	60.31	1703844.62	14284145.69	89°20'07.559"N	80°46'32.442"W	140.39	205.443	0.23	-0.23	-0.28	
3799.00	7.820	189.070	3789.19	-105.85	-139.14	61.52	1703843.41	14284133.33	89°20'07.436"N	80°46'32.457"W	152.13	203.853	1.17	0.61	7.64	
3894.00	7.910	190.200	3883.30	-116.91	-151.95	63.70	1703841.23	14284120.52	89°20'07.310"N	80°46'32.485"W	164.76	202.743	0.19	0.09	1.19	
3989.00	7.980	190.690	3977.39	-127.98	-164.87	66.08	1703838.86	14284107.61	89°20'07.182"N	80°46'32.516"W	177.62	201.840	0.10	0.07	0.52	
4083.00	7.770	188.160	4070.50	-138.96	-177.57	68.19	1703836.74	14284094.92	89°20'07.057"N	80°46'32.543"W	190.21	201.008	0.43	-0.22	-2.67	
4177.00	7.840	185.460	4163.63	-150.13	-190.24	69.71	1703835.23	14284082.25	89°20'06.931"N	80°46'32.563"W	202.61	200.123	0.40	0.07	-2.89	
4271.00	7.730	184.620	4256.76	-161.47	-202.92	70.82	1703834.11	14284069.57	89°20'06.806"N	80°46'32.578"W	214.93	199.240	0.17	-0.12	-0.89	
4365.00	7.800	190.440	4349.90	-172.50	-215.50	72.49	1703832.44	14284057.00	89°20'06.682"N	80°46'32.599"W	227.36	198.592	0.84	0.07	6.19	



Actual Wellpath Report

Scorpio Unit 2H AWP Proj: 16287

Page 4 of 10



REFERENCE WELLPATH IDENTIFICATION

Operator	ANTERO RESOURCES CORPORATION	Slot	Slot #04
Area	Doddridge Co., WV	Well	Scorpio Unit 2H
Field	Doddridge	Wellbore	Scorpio Unit 2H AWB
Facility	Alexander Pad		

WELLPATH DATA (205 stations)

MD [ft]	Inclination [°]	Azimuth [°]	TVD [ft]	Vert Sect [ft]	North [ft]	East [ft]	Grid East [US ft]	Grid North [US ft]	Latitude	Longitude	Closure Dist [ft]	Closure Dir [°]	DLS ["/100ft]	Build Rate ["/100ft]	Turn Rate ["/100ft]	Comments
4459.00	8.030	190.640	4443.01	-183.40	-228.22	-74.86	1703830.08	14284044.28	39°20'06.556"N	80°46'32.630"W	240.19	198.160	0.25	0.24	0.21	
4554.00	8.130	189.980	4637.07	-194.68	-241.36	-77.25	1703827.69	14284031.15	39°20'06.426"N	80°46'32.661"W	253.42	197.747	0.14	0.11	-0.69	
4648.00	8.340	188.680	4630.10	-206.17	-254.65	-79.43	1703825.51	14284017.87	39°20'06.295"N	80°46'32.689"W	266.75	197.323	0.30	0.22	-1.38	
4742.00	8.620	185.860	4723.07	-218.26	-268.39	-81.18	1703823.76	14284004.13	39°20'06.159"N	80°46'32.712"W	280.40	196.328	0.53	0.30	-3.00	
4836.00	8.470	187.170	4816.03	-230.52	-282.27	-82.76	1703822.18	14283990.26	39°20'06.022"N	80°46'32.732"W	294.15	196.341	0.26	-0.16	1.39	
4931.00	8.820	185.560	4909.95	-243.08	-296.46	-84.34	1703820.60	14283976.07	39°20'05.882"N	80°46'32.753"W	308.22	195.880	0.45	0.37	-1.69	
5025.00	8.030	184.110	5002.93	-255.36	-310.18	-85.51	1703819.43	14283962.36	39°20'05.746"N	80°46'32.768"W	321.75	195.412	0.87	-0.84	-1.54	
5120.00	8.260	182.080	5096.97	-267.54	-323.62	-86.23	1703818.71	14283948.92	39°20'05.614"N	80°46'32.778"W	334.91	194.920	0.39	0.24	-2.14	
5214.00	8.350	186.570	5189.99	-279.69	-337.15	-87.26	1703817.68	14283935.40	39°20'05.480"N	80°46'32.791"W	348.26	194.510	0.70	0.10	4.78	
5308.00	8.410	186.390	5282.98	-291.73	-350.76	-88.80	1703816.14	14283921.79	39°20'05.345"N	80°46'32.811"W	361.83	194.207	0.07	0.06	-0.20	
5402.00	8.940	182.690	5375.91	-304.41	-364.89	-89.91	1703815.03	14283907.67	39°20'05.206"N	80°46'32.826"W	375.80	193.842	0.82	0.56	-3.93	
5496.00	8.430	181.500	5468.83	-317.36	-379.07	-90.43	1703814.51	14283893.49	39°20'05.066"N	80°46'32.833"W	389.71	193.418	0.58	-0.54	-1.27	
5591.00	7.450	185.730	5562.92	-329.19	-392.16	-91.23	1703813.71	14283880.41	39°20'04.936"N	80°46'32.843"W	402.63	193.096	1.20	-1.03	4.45	
5685.00	7.740	184.900	5656.10	-340.22	-404.53	-92.38	1703812.57	14283868.04	39°20'04.814"N	80°46'32.858"W	414.94	192.863	0.33	0.31	-0.88	
5780.00	8.900	180.880	5750.10	-352.69	-418.25	-93.04	1703811.91	14283854.33	39°20'04.678"N	80°46'32.867"W	428.48	192.541	1.37	1.22	-4.23	
5874.00	9.420	179.480	5842.90	-366.54	-433.22	-93.08	1703811.86	14283839.37	39°20'04.531"N	80°46'32.868"W	443.10	192.126	0.60	0.55	-1.49	
5968.00	8.980	179.350	5935.69	-380.53	-448.24	-92.93	1703812.02	14283824.35	39°20'04.382"N	80°46'32.867"W	457.77	191.712	0.47	-0.47	-0.14	
6062.00	8.440	186.660	6028.61	-393.41	-462.43	-93.64	1703811.30	14283810.17	39°20'04.242"N	80°46'32.876"W	471.82	191.448	1.31	-0.57	7.78	
6109.00	6.090	201.150	6075.23	-398.25	-468.18	-94.94	1703810.00	14283804.42	39°20'04.185"N	80°46'32.893"W	477.71	191.463	6.30	-5.00	30.83	
6157.00	5.520	242.180	6123.00	-400.34	-471.64	-97.90	1703807.04	14283800.96	39°20'04.151"N	80°46'32.931"W	481.69	191.727	8.54	-1.19	85.48	
6204.00	8.850	258.000	6169.63	-399.93	-473.45	-103.44	1703801.51	14283799.16	39°20'04.133"N	80°46'33.001"W	484.61	192.325	8.18	7.09	33.66	
6251.00	9.770	279.250	6216.02	-397.23	-473.56	-110.92	1703794.03	14283799.05	39°20'04.132"N	80°46'33.097"W	486.37	193.182	7.52	1.96	45.21	
6298.00	10.750	304.450	6262.30	-391.50	-470.43	-118.47	1703796.48	14283808.17	39°20'04.163"N	80°46'33.193"W	485.12	194.135	9.69	2.09	53.62	
6345.00	12.690	320.080	6308.33	-382.93	-463.99	-125.40	1703779.56	14283802.61	39°20'04.227"N	80°46'33.281"W	480.64	195.124	7.88	4.13	33.26	
6392.00	15.400	323.310	6353.92	-371.97	-455.03	-132.44	1703772.51	14283817.57	39°20'04.316"N	80°46'33.370"W	473.91	196.229	6.00	5.77	6.87	
6440.00	18.560	324.910	6399.82	-358.36	-443.66	-140.64	1703764.32	14283828.93	39°20'04.428"N	80°46'33.474"W	465.42	197.589	6.65	6.58	3.33	
6487.00	22.760	329.790	6443.79	-342.06	-429.68	-149.52	1703755.44	14283842.91	39°20'04.567"N	80°46'33.587"W	454.95	199.187	9.65	8.94	10.38	
6533.00	26.190	336.280	6485.66	-323.10	-412.69	-158.09	1703746.88	14283859.89	39°20'04.735"N	80°46'33.695"W	441.93	200.960	9.46	7.46	14.11	BH AT Curve <8-1/2"> (6487)-(6533-16263)
6562.00	28.880	338.690	6511.37	-309.70	-400.30	-163.21	1703741.76	14283872.27	39°20'04.858"N	80°46'33.760"W	432.29	202.182	10.04	9.28	8.31	
6609.00	31.640	338.740	6551.96	-286.02	-378.23	-171.81	1703733.17	14283894.33	39°20'05.076"N	80°46'33.868"W	415.43	204.429	5.87	5.87	0.11	



Actual Wellpath Report

Scorpio Unit 2H AWP Proj: 16287'
Page 5 of 10



REFERENCE WELLPATH IDENTIFICATION		Slot	Slot #04
Operator	ANTERO RESOURCES CORPORATION	Well	Scorpio Unit 2H
Area	Doddridge Co., WV	Wellbore	Scorpio Unit 2H AWB
Field	Doddridge		
Facility	Alexander Pad		

WELLPATH DATA (205 stations) † = interpolated/extrapolated station																
MD [ft]	Inclination [°]	Azimuth [°]	TVD [ft]	Vert Sect [ft]	North [ft]	East [ft]	Grid East [US ft]	Grid North [US ft]	Latitude	Longitude	Closure Dist [ft]	Closure Dir [°]	DLS [°/100ft]	Build Rate [°/100ft]	Turn Rate [°/100ft]	Comments
6656.00	34.900	338.560	6591.25	-260.24	-354.22	-181.19	1703723.78	14283918.33	39°20'05.313"N	80°46'33.987"W	397.88	207.091	6.94	6.94	-0.38	
6703.00	38.810	337.600	6628.86	-232.06	-328.08	-191.72	1703713.26	14283944.46	39°20'05.572"N	80°46'34.120"W	379.99	210.301	8.41	8.32	-2.04	
6750.00	43.800	337.200	6664.15	-201.04	-299.45	-203.65	1703701.34	14283973.08	39°20'05.855"N	80°46'34.271"W	362.14	214.218	10.63	10.62	-0.85	
6797.00	48.320	337.450	6696.76	-167.21	-268.23	-216.69	1703688.30	14284004.29	39°20'06.164"N	80°46'34.436"W	344.82	218.933	9.62	9.62	0.53	
6845.00	52.830	337.460	6727.23	-130.14	-234.00	-230.90	1703674.10	14284038.51	39°20'06.503"N	80°46'34.616"W	328.74	224.618	9.40	9.40	0.02	
6892.00	56.650	338.010	6754.36	-91.77	-198.49	-245.43	1703659.57	14284074.01	39°20'06.854"N	80°46'34.800"W	315.65	231.037	8.18	8.13	1.17	
6905.00†	57.966	338.148	6761.38	-80.83	-188.34	-249.52	1703655.49	14284084.15	39°20'06.955"N	80°46'34.852"W	312.62	232.955	10.17	10.13	1.08	Burket: 6905'MD / 6761'TVD
6939.00	61.410	338.490	6778.54	-51.49	-161.06	-260.36	1703644.65	14284111.41	39°20'07.429"N	80°46'34.989"W	306.15	238.258	10.17	10.13	1.01	
6964.00†	63.500	338.966	6790.10	-29.32	-140.41	-268.40	1703636.61	14284132.06	39°20'07.222"N	80°46'35.090"W	302.91	242.384	8.53	8.36	1.90	Tully: 6964'MD / 6790'TVD
6986.00	65.340	339.370	6799.60	-9.49	-121.86	-275.46	1703629.56	14284150.60	39°20'07.612"N	80°46'35.180"W	301.21	246.135	8.53	8.36	1.84	
7034.00	69.140	339.340	6818.16	34.75	-80.45	-291.06	1703613.96	14284192.00	39°20'08.022"N	80°46'35.377"W	301.97	254.549	7.92	7.92	-0.06	
7065.00†	71.462	339.367	6828.61	63.93	-53.14	-301.35	1703603.68	14284219.29	39°20'08.292"N	80°46'35.507"W	306.00	259.999	7.49	7.49	0.03	Hamilton: 7065'MD / 6829'TVD
7081.00	72.660	339.380	6833.54	79.15	-38.90	-306.71	1703598.32	14284233.53	39°20'08.433"N	80°46'35.575"W	309.17	262.773	7.49	7.49	0.08	
7094.00†	73.235	339.266	6837.35	91.57	-27.27	-311.10	1703593.93	14284245.16	39°20'08.548"N	80°46'35.630"W	312.29	264.991	4.50	4.42	-0.88	POE Marcellus: 7094'MD / 6837'TVD
7128.00	74.740	338.970	6846.73	124.24	3.27	-322.75	1703582.28	14284275.68	39°20'08.850"N	80°46'35.777"W	322.77	270.580	4.50	4.43	-0.87	
7175.00	77.340	338.730	6858.07	169.85	45.80	-339.21	1703565.83	14284318.20	39°20'09.271"N	80°46'35.986"W	342.28	277.690	5.55	5.53	-0.51	
7222.00	80.760	338.480	6866.99	215.98	88.76	-356.04	1703549.01	14284361.14	39°20'09.696"N	80°46'36.198"W	366.93	283.998	7.30	7.28	-0.53	
7269.00	84.420	338.360	6873.06	262.58	132.09	-373.18	1703531.88	14284404.45	39°20'10.125"N	80°46'36.415"W	395.86	289.492	7.79	7.79	-0.26	
7316.00	88.210	338.670	6876.08	309.47	175.73	-390.35	1703514.71	14284448.07	39°20'10.556"N	80°46'36.632"W	428.08	294.236	8.09	8.06	0.66	
7410.00	90.460	340.220	6877.17	403.42	263.73	-423.35	1703481.72	14284453.04	39°20'11.427"N	80°46'37.050"W	498.78	301.921	2.91	2.39	1.65	
7505.00	90.340	341.300	6876.50	498.30	353.42	-454.65	1703450.43	14284625.69	39°20'12.314"N	80°46'37.445"W	575.86	307.859	1.14	-0.13	1.14	
7599.00	90.460	342.180	6875.85	592.09	442.68	-484.11	1703420.99	14284714.92	39°20'13.197"N	80°46'37.817"W	655.99	312.441	0.94	0.13	0.94	
7693.00	90.430	340.340	6875.12	685.93	531.69	-514.30	1703390.81	14284803.90	39°20'14.078"N	80°46'38.199"W	739.73	315.952	1.96	-0.03	-1.96	
7788.00	90.310	337.050	6874.45	780.91	620.19	-548.81	1703356.31	14284892.35	39°20'14.953"N	80°46'38.635"W	828.15	318.494	3.46	-0.06	-3.46	
7882.00	90.310	332.540	6873.90	874.74	705.21	-588.83	1703316.31	14284977.35	39°20'15.794"N	80°46'39.142"W	918.72	320.139	4.80	-0.06	-4.80	
7977.00	90.520	333.090	6873.21	969.36	789.72	-632.23	1703272.92	14285061.82	39°20'16.631"N	80°46'39.692"W	1011.62	321.320	0.62	0.22	0.58	
8071.00	90.490	336.710	6872.38	1063.20	874.82	-672.10	1703233.07	14285146.89	39°20'17.473"N	80°46'40.196"W	1103.19	322.466	3.85	-0.03	3.85	
8165.00	90.830	338.890	6871.30	1157.19	961.84	-707.61	1703197.57	14285233.88	39°20'18.334"N	80°46'40.646"W	1194.09	323.659	2.35	0.36	2.32	
8260.00	90.680	340.420	6870.04	1252.14	1050.91	-740.64	1703164.56	14285322.90	39°20'19.215"N	80°46'41.063"W	1285.67	324.825	1.62	-0.16	1.61	
8354.00	90.520	340.130	6869.06	1346.05	1139.39	-772.36	1703132.85	14285411.35	39°20'20.090"N	80°46'41.464"W	1376.50	325.868	0.35	-0.17	-0.31	



Actual Wellpath Report

Scorpio Unit 2H AWP Proj: 16287

Page 6 of 10



REFERENCE WELLPATH IDENTIFICATION		Slot	Slot #04
Operator	ANTERO RESOURCES CORPORATION	Well	Scorpio Unit 2H
Area	Doddridge Co., WV	Wellbore	Scorpio Unit 2H AWB
Field	Doddridge		
Facility	Alexander Pad		

WELLPATH DATA (205 stations)																
MD [ft]	Inclination [°]	Azimuth [°]	TVD [ft]	Vert Sect [ft]	North [ft]	East [ft]	Grid East [US ft]	Grid North [US ft]	Latitude	Longitude	Closure Dist [ft]	Closure Dir [°]	DLS [°/100ft]	Build Rate [°/100ft]	Turn Rate [°/100ft]	Comments
8448.00	90.680	340.350	6868.08	1439.97	1227.85	-804.14	1703101.08	14285499.77	39°20'20.965"N	80°46'41.866"W	1467.74	326.778	0.29	0.17	0.23	
8542.00	90.340	339.810	6867.24	1533.90	1316.22	-836.17	1703069.07	14285588.11	39°20'21.839"N	80°46'42.271"W	1559.36	327.573	0.68	-0.36	-0.57	
8637.00	90.400	341.840	6866.62	1628.78	1405.94	-867.37	1703037.88	14285677.80	39°20'22.727"N	80°46'42.665"W	1651.97	328.328	2.14	0.06	2.14	
8732.00	90.400	337.880	6865.96	1723.70	1495.11	-900.07	1703005.19	14285766.93	39°20'23.609"N	80°46'43.078"W	1745.13	328.952	4.17	0.00	-4.17	
8826.00	90.310	330.230	6865.38	1817.41	1579.57	-941.16	1702964.12	14285851.36	39°20'24.445"N	80°46'43.589"W	1838.71	329.212	8.14	-0.10	-8.14	
8920.00	90.370	326.780	6864.82	1910.13	1659.71	-990.26	1702915.04	14285931.47	39°20'25.238"N	80°46'44.221"W	1932.68	329.178	3.67	0.06	-3.67	
9015.00	90.400	330.890	6864.18	2003.91	1740.98	-1039.41	1702865.90	14286012.71	39°20'26.043"N	80°46'44.844"W	2027.66	329.162	4.33	0.03	4.33	
9109.00	90.340	335.070	6863.57	2097.53	1824.70	-1082.11	1702823.23	14286096.39	39°20'26.871"N	80°46'45.385"W	2121.44	329.331	4.45	-0.06	4.45	
9203.00	90.310	336.570	6863.04	2191.46	1910.45	-1120.61	1702784.74	14286182.11	39°20'27.719"N	80°46'45.872"W	2214.86	329.605	1.60	-0.03	1.60	
9298.00	90.310	333.090	6862.53	2286.31	1996.42	-1161.01	1702744.36	14286268.04	39°20'28.570"N	80°46'46.384"W	2309.46	329.820	3.66	0.00	-3.66	
9392.00	90.280	329.390	6862.04	2379.65	2078.81	-1206.23	1702699.16	14286350.39	39°20'29.385"N	80°46'46.957"W	2403.42	329.876	3.94	-0.03	-3.94	
9487.00	89.880	329.500	6861.91	2473.61	2160.61	-1254.52	1702650.88	14286432.17	39°20'30.195"N	80°46'47.569"W	2498.41	329.859	0.44	-0.42	0.12	
9582.00	90.060	336.740	6861.96	2568.21	2245.29	-1297.44	1702607.98	14286516.82	39°20'31.033"N	80°46'48.113"W	2593.20	329.979	7.62	0.19	7.62	
9676.00	90.000	338.580	6861.91	2662.20	2332.23	-1333.17	1702572.26	14286603.72	39°20'31.893"N	80°46'48.565"W	2686.38	330.246	1.96	-0.06	1.96	
9770.00	90.250	341.510	6861.71	2756.13	2420.58	-1365.25	1702540.20	14286692.03	39°20'32.767"N	80°46'48.970"W	2779.05	330.576	3.13	0.27	3.12	
9864.00	90.090	345.020	6861.43	2849.71	2510.58	-1392.31	1702513.15	14286782.00	39°20'33.657"N	80°46'49.312"W	2870.81	330.988	3.74	-0.17	3.73	
9959.00	90.340	344.410	6861.07	2944.04	2602.22	-1417.35	1702488.11	14286873.60	39°20'34.564"N	80°46'49.628"W	2963.18	331.424	0.69	0.26	-0.64	
10053.00	90.120	342.130	6860.69	3037.63	2692.24	-1444.41	1702461.07	14286963.58	39°20'35.454"N	80°46'49.970"W	3055.24	331.786	2.44	-0.23	-2.43	
10147.00	90.950	341.410	6859.81	3131.41	2781.51	-1473.82	1702431.68	14287052.82	39°20'36.337"N	80°46'50.341"W	3147.85	332.083	1.17	0.88	-0.77	
10242.00	90.090	338.040	6858.95	3226.35	2870.61	-1506.73	1702398.77	14287141.88	39°20'37.219"N	80°46'50.757"W	3242.01	332.306	3.66	-0.91	-3.55	
10336.00	90.030	339.070	6858.85	3320.34	2958.10	-1541.10	1702364.42	14287229.34	39°20'38.084"N	80°46'51.192"W	3335.47	332.482	1.10	-0.06	1.10	
10431.00	90.060	340.380	6858.78	3415.29	3047.21	-1574.02	1702331.52	14287318.42	39°20'38.966"N	80°46'51.608"W	3429.73	332.682	1.38	0.03	1.38	
10525.00	90.060	343.880	6858.68	3509.03	3136.66	-1602.86	1702302.69	14287407.83	39°20'39.850"N	80°46'51.973"W	3522.47	332.933	3.72	0.00	3.72	
10620.00	90.060	340.660	6858.58	3603.75	3227.14	-1631.78	1702273.77	14287498.27	39°20'40.745"N	80°46'52.338"W	3616.23	333.177	3.39	0.00	-3.39	
10714.00	90.090	337.960	6858.46	3697.71	3315.07	-1664.99	1702240.58	14287586.17	39°20'41.615"N	80°46'52.758"W	3709.70	333.332	2.87	0.03	-2.87	
10808.00	89.970	337.000	6858.41	3791.71	3401.96	-1700.84	1702204.74	14287673.03	39°20'42.475"N	80°46'53.213"W	3803.45	333.437	0.82	-0.13	-0.81	
10902.00	89.780	335.070	6858.61	3885.65	3487.92	-1738.87	1702166.73	14287758.95	39°20'43.325"N	80°46'53.693"W	3897.34	333.502	2.27	-0.20	-2.27	
10997.00	89.880	334.670	6858.90	3980.52	3573.93	-1779.21	1702126.40	14287844.92	39°20'44.176"N	80°46'54.204"W	3992.31	333.534	0.43	0.11	-0.42	
11092.00	90.060	337.560	6858.95	4075.46	3660.78	-1817.68	1702087.95	14287931.74	39°20'45.036"N	80°46'54.691"W	4087.21	333.594	3.05	0.19	3.04	
11186.00	89.880	336.380	6859.00	4169.44	3747.29	-1854.45	1702051.19	14288018.22	39°20'45.892"N	80°46'55.156"W	4181.05	333.670	1.27	-0.19	-1.26	



Actual Wellpath Report

Scorpio Unit 2H AWP Proj: 16287

Page 7 of 10



REFERENCE WELLPATH IDENTIFICATION

Operator	ANTERO RESOURCES CORPORATION	Slot	Slot #04
Area	Doddridge Co., WV	Well	Scorpio Unit 2H
Field	Doddridge	Wellbore	Scorpio Unit 2H AWB
Facility	Alexander Pad		

WELLPATH DATA (205 stations)

MD [ft]	Inclination [°]	Azimuth [°]	TVD [ft]	Vert Sect [ft]	North [ft]	East [ft]	Grid East [US ft]	Grid North [US ft]	Latitude	Longitude	Closure Dist [ft]	Closure Dir [°]	DLS [°/100ft]	Build Rate [°/100ft]	Turn Rate [°/100ft]	Comments
11280.00	90.280	337.140	6858.86	4263.42	3833.66	-1891.54	1702014.12	14288104.55	39°20'46.746"N	80°46'55.626"W	4274.91	333.738	0.91	0.43	0.81	
11374.00	90.310	335.870	6858.38	4357.39	3919.87	-1929.01	1701976.66	14288190.72	39°20'47.599"N	80°46'56.100"W	4368.80	333.798	1.35	0.03	-1.36	
11469.00	89.820	335.220	6858.27	4452.31	4006.34	-1968.34	1701937.35	14288277.17	39°20'48.455"N	80°46'56.598"W	4463.76	333.835	0.86	-0.52	-0.68	
11563.00	89.420	332.320	6858.90	4546.05	4090.65	-2009.88	1701895.82	14288361.44	39°20'49.289"N	80°46'57.124"W	4557.75	333.834	3.11	-0.43	-3.09	
11657.00	89.630	332.600	6859.67	4639.61	4174.00	-2053.34	1701852.38	14288444.75	39°20'50.114"N	80°46'57.615"W	4651.72	333.806	0.37	0.22	0.30	
11751.00	90.180	336.320	6859.83	4733.42	4258.80	-2093.86	1701811.88	14288529.52	39°20'50.953"N	80°46'58.188"W	4745.69	333.819	4.00	0.59	3.96	
11846.00	90.400	337.260	6859.35	4828.40	4346.11	-2131.30	1701774.45	14288616.79	39°20'51.817"N	80°46'58.662"W	4840.57	333.877	1.02	0.23	0.99	
11940.00	89.750	335.910	6859.23	4922.37	4432.36	-2168.65	1701737.11	14288703.02	39°20'52.670"N	80°46'59.135"W	4934.46	333.929	1.59	-0.69	-1.44	
12034.00	90.740	337.540	6858.82	5016.35	4518.71	-2205.80	1701699.99	14288789.33	39°20'53.524"N	80°46'59.605"W	5028.35	333.981	2.03	1.05	1.73	
12128.00	89.880	338.940	6858.32	5110.34	4606.01	-2240.64	1701665.15	14288876.59	39°20'54.388"N	80°47'00.046"W	5122.09	334.059	1.75	-0.91	1.49	
12222.00	90.800	342.420	6857.76	5204.22	4694.70	-2271.73	1701634.07	14288965.25	39°20'55.265"N	80°47'00.439"W	5215.45	334.178	3.83	0.98	3.70	
12317.00	90.490	342.980	6856.69	5298.88	4785.39	-2299.98	1701605.84	14289055.91	39°20'56.162"N	80°47'00.796"W	5309.42	334.330	0.67	-0.33	0.59	
12411.00	90.150	342.860	6856.16	5392.52	4875.25	-2327.59	1701578.24	14289145.72	39°20'57.051"N	80°47'01.144"W	5402.38	334.479	0.38	-0.36	-0.13	
12505.00	90.000	342.280	6856.04	5486.22	4964.93	-2355.75	1701550.09	14289235.37	39°20'57.938"N	80°47'01.500"W	5495.46	334.617	0.64	-0.16	-0.62	
12599.00	90.370	343.390	6855.74	5579.87	5054.74	-2383.49	1701522.36	14289325.15	39°20'58.826"N	80°47'01.850"W	5588.51	334.754	1.24	0.39	1.18	
12693.00	90.430	341.880	6855.08	5673.55	5144.45	-2411.54	1701494.32	14289414.82	39°20'59.714"N	80°47'02.205"W	5681.63	334.884	1.61	0.06	-1.61	
12788.00	89.750	338.460	6854.93	5768.47	5233.80	-2443.76	1701462.11	14289504.14	39°21'00.598"N	80°47'02.612"W	5776.22	334.971	3.67	-0.72	-3.60	
12882.00	89.720	336.210	6855.37	5862.45	5320.54	-2479.98	1701425.91	14289590.84	39°21'01.456"N	80°47'03.071"W	5870.13	335.009	2.39	-0.03	-2.39	
12976.00	89.690	334.520	6855.85	5956.35	5405.98	-2519.16	1701386.74	14289676.24	39°21'02.301"N	80°47'03.567"W	5964.13	335.015	1.80	-0.03	-1.80	
13070.00	89.720	334.760	6856.33	6050.20	5490.92	-2559.42	1701346.58	14289761.15	39°21'03.142"N	80°47'04.077"W	6058.12	335.009	0.26	0.03	0.26	
13164.00	90.490	337.630	6856.16	6144.14	5576.91	-2597.36	1701308.58	14289847.11	39°21'03.992"N	80°47'04.557"W	6152.09	335.027	3.16	0.82	3.09	
13258.00	89.970	338.120	6855.78	6238.14	5663.99	-2632.76	1701273.19	14289934.15	39°21'04.854"N	80°47'05.005"W	6245.98	335.070	0.76	-0.55	0.52	
13352.00	89.750	338.730	6856.01	6332.14	5751.40	-2667.33	1701238.64	14290021.53	39°21'05.719"N	80°47'05.442"W	6339.82	335.120	0.69	-0.23	0.65	
13446.00	90.280	340.830	6855.99	6426.08	5839.60	-2699.82	1701206.16	14290109.70	39°21'06.591"N	80°47'05.853"W	6433.50	335.188	2.30	0.56	2.23	
13541.00	90.370	341.160	6855.45	6520.95	5929.47	-2730.75	1701175.24	14290199.48	39°21'07.480"N	80°47'06.244"W	6528.02	335.272	0.36	0.09	0.35	
13635.00	90.340	339.000	6854.87	6614.87	6017.79	-2762.78	1701143.23	14290287.82	39°21'08.354"N	80°47'06.649"W	6621.69	335.340	2.30	-0.03	-2.30	
13728.00	90.340	339.960	6854.32	6707.84	6104.89	-2795.38	1701111.64	14290374.88	39°21'09.215"N	80°47'07.062"W	6714.45	335.397	1.03	0.00	1.03	
13822.00	89.820	336.290	6854.19	6801.82	6192.11	-2830.39	1701075.64	14290462.06	39°21'10.078"N	80°47'07.505"W	6808.33	335.435	3.94	-0.55	-3.90	
13917.00	90.120	334.330	6854.24	6896.71	6278.42	-2870.07	1701035.97	14290548.34	39°21'10.932"N	80°47'08.007"W	6903.32	335.433	2.09	0.32	-2.06	
14011.00	89.910	331.840	6854.21	6990.37	6362.23	-2912.62	1700993.44	14290632.11	39°21'11.762"N	80°47'08.546"W	6997.24	335.402	2.66	-0.22	-2.65	



Actual Wellpath Report

Scorpio Unit 2H AWP Proj: 16287
Page 8 of 10



REFERENCE WELLPATH IDENTIFICATION	
Operator	ANTERO RESOURCES CORPORATION
Area	Doddridge Co., WV
Field	Doddridge
Facility	Alexander Pad
Slot	Slot #04
Well	Scorpio Unit 2H
Wellbore	Scorpio Unit 2H AWB

WELLPATH DATA (205 stations)																
MD ft	Inclination [°]	Azimuth [°]	TVD ft	Vert Sect ft	North ft	East ft	Grid East [US ft]	Grid North [US ft]	Latitude	Longitude	Closure Dist ft	Closure Dir [°]	DLS [°/100ft]	Build Rate [°/100ft]	Turn Rate [°/100ft]	Comments
14105.00	90.430	333.060	6853.93	7083.94	6445.57	-2956.10	1700949.98	14290715.42	39°21'12.586"N	80°47'09.097"W	7091.11	335.363	1.41	0.55	1.30	
14199.00	90.370	334.880	6853.28	7177.70	6530.03	-2997.34	1700908.75	14290799.85	39°21'13.422"N	80°47'09.620"W	7185.08	335.344	1.94	-0.06	1.94	
14294.00	90.370	337.120	6852.66	7272.64	6616.81	-3035.98	1700870.13	14290886.59	39°21'14.281"N	80°47'10.109"W	7280.06	335.353	2.36	0.00	2.36	
14388.00	90.430	338.620	6852.01	7366.64	6703.88	-3071.39	1700834.74	14290973.63	39°21'15.142"N	80°47'10.557"W	7373.97	335.385	1.60	0.06	1.60	
14483.00	90.370	339.120	6851.34	7461.62	6792.49	-3105.63	1700800.51	14291062.20	39°21'16.019"N	80°47'10.991"W	7468.79	335.429	0.53	-0.06	0.53	
14577.00	90.280	340.040	6850.81	7555.58	6880.58	-3138.43	1700767.72	14291150.26	39°21'16.890"N	80°47'11.405"W	7562.55	335.481	0.98	-0.10	0.98	
14672.00	90.060	340.310	6850.53	7650.51	6969.95	-3170.65	1700735.52	14291239.59	39°21'17.774"N	80°47'11.813"W	7657.23	335.539	0.37	-0.23	0.28	
14766.00	90.680	339.980	6849.92	7744.44	7058.36	-3202.57	1700703.60	14291327.97	39°21'18.649"N	80°47'12.217"W	7750.93	335.595	0.75	0.66	-0.35	
14860.00	91.050	340.170	6848.50	7838.36	7146.72	-3234.61	1700671.59	14291416.29	39°21'19.523"N	80°47'12.622"W	7844.63	335.648	0.44	0.39	0.20	
14955.00	90.680	339.820	6847.07	7933.29	7235.98	-3267.10	1700639.10	14291505.52	39°21'20.406"N	80°47'13.033"W	7939.35	335.700	0.54	-0.39	-0.37	
15050.00	90.580	338.440	6846.02	8028.26	7324.74	-3300.94	1700605.28	14291594.24	39°21'21.284"N	80°47'13.461"W	8034.18	335.741	1.46	-0.11	-1.45	
15145.00	90.860	337.560	6844.83	8123.25	7412.81	-3336.53	1700569.71	14291682.28	39°21'22.155"N	80°47'13.911"W	8129.09	335.767	0.97	0.29	-0.93	
15240.00	90.400	338.350	6843.78	8218.24	7500.86	-3372.18	1700534.07	14291770.29	39°21'23.026"N	80°47'14.362"W	8224.02	335.793	0.96	-0.48	0.83	
15335.00	90.250	339.120	6843.25	8313.23	7589.39	-3406.63	1700499.63	14291858.79	39°21'23.902"N	80°47'14.798"W	8318.89	335.826	0.83	-0.16	0.81	
15429.00	89.940	339.170	6843.09	8407.21	7677.23	-3440.10	1700466.17	14291946.59	39°21'24.771"N	80°47'15.222"W	8412.74	335.863	0.33	-0.33	0.05	
15524.00	89.910	339.130	6843.21	8502.19	7766.01	-3473.91	1700432.37	14292035.34	39°21'25.649"N	80°47'15.650"W	8507.58	335.900	0.05	-0.03	-0.04	
15619.00	89.940	338.950	6843.34	8597.17	7854.72	-3507.89	1700398.41	14292124.02	39°21'26.527"N	80°47'16.080"W	8602.44	335.935	0.19	0.03	-0.19	
15714.00	89.910	338.080	6843.46	8692.17	7943.12	-3542.69	1700363.63	14292212.38	39°21'27.401"N	80°47'16.520"W	8697.34	335.963	0.92	-0.03	-0.92	
15809.00	89.880	337.350	6843.64	8787.17	8031.02	-3578.71	1700327.61	14292300.25	39°21'28.271"N	80°47'16.976"W	8792.30	335.982	0.77	-0.03	-0.77	
15904.00	89.940	336.360	6843.79	8882.12	8118.04	-3616.81	1700289.53	14292387.23	39°21'29.132"N	80°47'17.458"W	8887.29	335.986	2.10	0.06	-2.09	
15999.00	89.880	334.730	6843.93	8977.00	8204.17	-3656.89	1700249.47	14292475.33	39°21'29.984"N	80°47'17.966"W	8982.28	335.976	0.67	-0.06	-0.66	
16094.00	89.850	332.470	6844.16	9071.72	8289.26	-3699.13	1700207.24	14292558.38	39°21'30.826"N	80°47'18.501"W	9077.19	335.951	2.38	-0.03	-2.38	
16188.00	90.000	331.140	6844.28	9165.18	8372.11	-3743.54	1700162.85	14292641.19	39°21'31.646"N	80°47'19.064"W	9170.95	335.908	1.42	0.16	-1.41	
16263.00	90.060	332.340	6844.24	9239.74	8438.17	-3779.05	1700127.35	14292707.23	39°21'32.299"N	80°47'19.514"W	9245.75	335.875	1.60	0.08	1.60	
16287.00	90.060	332.340	6844.22	9263.63	8459.42	-3790.19	1700116.22	14292728.48	39°21'32.510"N	80°47'19.655"W	9269.70	335.866	0.00	0.00	0.00	Projected MD @ TD: 16287'



Actual Wellpath Report

Scorpio Unit 2H AWP Proj: 16287'
Page 9 of 10



REFERENCE WELLPATH IDENTIFICATION			
Operator	ANTERO RESOURCES CORPORATION	Slot	Slot #04
Area	Doddridge Co., WV	Well	Scorpio Unit 2H
Field	Doddridge	Wellbore	Scorpio Unit 2H AWB
Facility	Alexander Pad		

HOLE & CASING SECTIONS - Ref Wellbore: Scorpio Unit 2H AWB Ref Wellpath: Scorpio Unit 2H AWP Proj: 16287'									
String/Diameter	Start MD [ft]	End MD [ft]	Interval [ft]	Start TVD [ft]	End TVD [ft]	Start N/S [ft]	Start E/W [ft]	End N/S [ft]	End E/W [ft]
20in Conductor	25.00	105.00	80.00	25.00	105.00	0.00	0.00	-0.31	-0.36
17.5in Open Hole	105.00	577.30	472.30	105.00	577.29	-0.31	-0.36	-2.26	-2.79
13.375in Casing Surface	25.00	577.30	552.30	25.00	577.29	0.00	0.00	-2.26	-2.79
12.25in Open Hole	577.30	2572.10	1994.80	577.29	2570.96	-2.26	-2.79	-8.51	-37.15
9.625in Casing Intermediate	25.00	2572.10	2547.10	25.00	2570.96	0.00	0.00	-8.51	-37.15

TARGETS									
Name	TVD [ft]	North [ft]	East [ft]	Grid East [US ft]	Grid North [US ft]	Latitude	Longitude	Shape	
Scorpio Unit 2H POE - Rev-2	6836.00	-38.60	-308.83	1703596.20	14284233.83	39°20'08.436"N	80°46'35.602"W	point	
Scorpio Unit 2H BHL - Rev-2	6877.00	8484.11	-3763.56	1700142.85	14292753.15	39°21'32.753"N	80°47'19.316"W	point	
Scorpio Unit 2H LP - Rev-1	6877.00	182.75	-398.55	1703506.51	14284455.09	39°20'10.626"N	80°46'36.737"W	point	

WELLPATH COMPOSITION - Ref Wellbore: Scorpio Unit 2H AWB Ref Wellpath: Scorpio Unit 2H AWP Proj: 16287'			
Start MD [ft]	End MD [ft]	Positional Uncertainty Model	Log Name/Comment
25.00	550.00	Gyrodata standard - Single-shot	01 Gyrodata SS Gyro <17-1/2">(100'-550')
550.00	2503.00	ISWISA MWD, Rev. 4 (Standard)	02 WFT EM <12-1/4">(550')[738'-2503']
2503.00	6487.00	ISWISA MWD, Rev. 4 (Standard)	03 WFT EM <8-3/4">(2503')[2661'-6487']
6487.00	16263.00	BHI Auto Irak Curve (Short)	04 BH AT Curve <8-1/2"> (6487')[6533'-16263']
16263.00	16287.00	Blind Drilling (std)	Projection to bit

05/03/2019



Actual Wellpath Report

Scorpio Unit 2H AWP Proj: 16287
Page 10 of 10



REFERENCE WELLPATH IDENTIFICATION			
Operator	ANTERO RESOURCES CORPORATION	Slot	Slot #04
Area	Doddridge Co., WV	Well	Scorpio Unit 2H
Field	Doddridge	Wellbore	Scorpio Unit 2H AWB
Facility	Alexander Pad		

COMMENTS
<p>Wellpath general comments API: 47-017-06861-0000 BH Job #: 9172614 Rig: Patterson 342 Duration: 05/22/18 - 05/22/18 Gyrodata SS Gyro <17-1/2">(100'-550') WFT EM <12-1/4">(550')(738'-2503') WFT EM <8-3/4">(2503')(2661'-6487') BH AT Curve <8-1/2">(6487')(6533'-16263') Burket: 6905'MD / 6761'TVD Tully: 6964'MD / 6790'TVD Hamilton: 7065'MD / 6829'TVD POE Marcellus: 7094'MD / 6837'TVD Projected MD @ TD: 16287'</p>

05/03/2019