

LATITUDE 39°20'00"

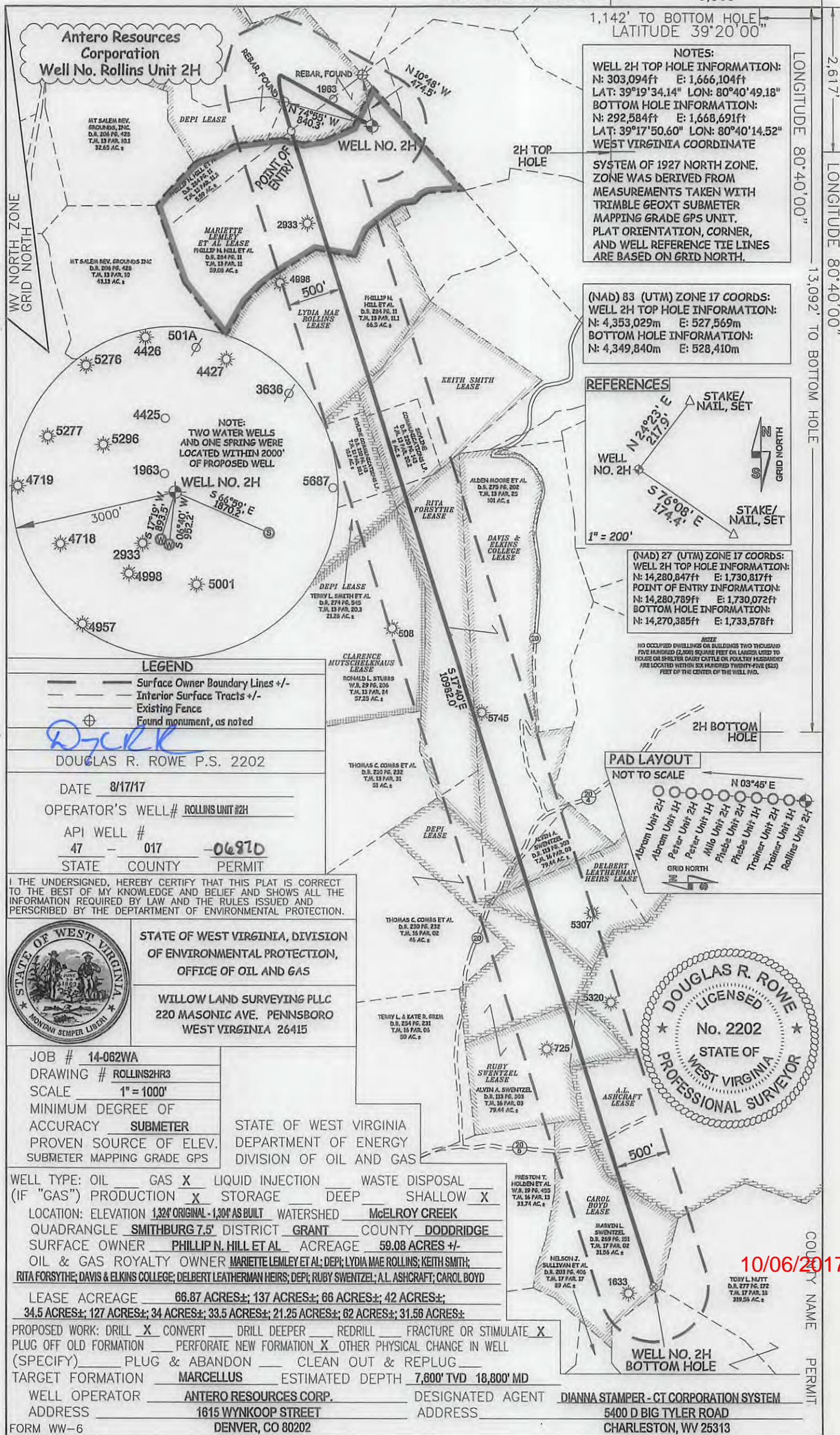
3,865'

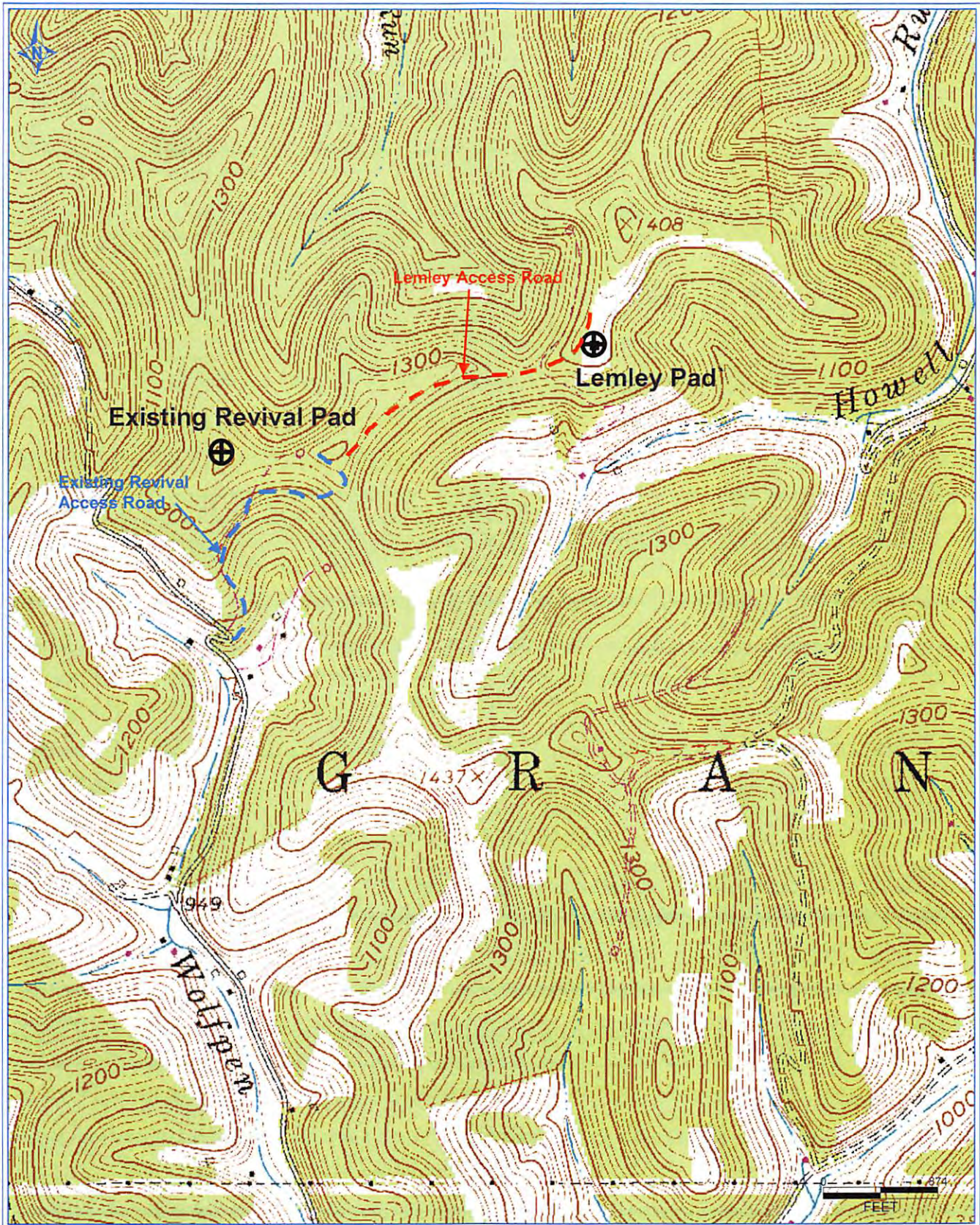
1,142' TO BOTTOM HOLE
LATITUDE 39°20'00"

LONGITUDE 80°40'00"

2,617'
LONGITUDE 80°40'00"

13,092' TO BOTTOM HOLE





Antero Resources Corporation

Appalachian Basin

Rollins Unit 2H

Doddridge County

Quadrangle: Smithburg 7.5'

Watershed: McElroy Creek

District: Grant

Date: 8-04-2014

Office of Oil and Gas
AUG 21 2017

WV Department of
Environmental Protection

047-017-06870

10/06/2017