

WW-7
8-30-06



West Virginia Department of Environmental Protection
Office of Oil and Gas
WELL LOCATION FORM: GPS

API: 47-017-06881 WELL NO.: Telstar 2H

FARM NAME: Mary E. Deets and/or Paul A. Smith

RESPONSIBLE PARTY NAME: Antero Resources Corporation

COUNTY: Doddridge DISTRICT: West Union

QUADRANGLE: West Union

SURFACE OWNER: Mary E. Deets

ROYALTY OWNER: _____

UTM GPS NORTHING: 4351713.88 m

UTM GPS EASTING: 523689.07 m GPS ELEVATION: 419.6 m (142')

The Responsible Party named above has chosen to submit GPS coordinates in lieu of preparing a new well location plat for a plugging permit or assigned API number on the above well. The Office of Oil and Gas will not accept GPS coordinates that do not meet the following requirements:

- Datum: NAD 1983, Zone: 17 North, Coordinate Units: meters, Altitude: height above mean sea level (MSL) – meters.
- Accuracy to Datum – 3.05 meters
- Data Collection Method:

Survey grade GPS : Post Processed Differential _____
Real-Time Differential

Mapping Grade GPS : Post Processed Differential _____
Real-Time Differential

RECEIVED
Office of Oil and Gas

OCT 23 2019

WV Department of
Environmental Protection

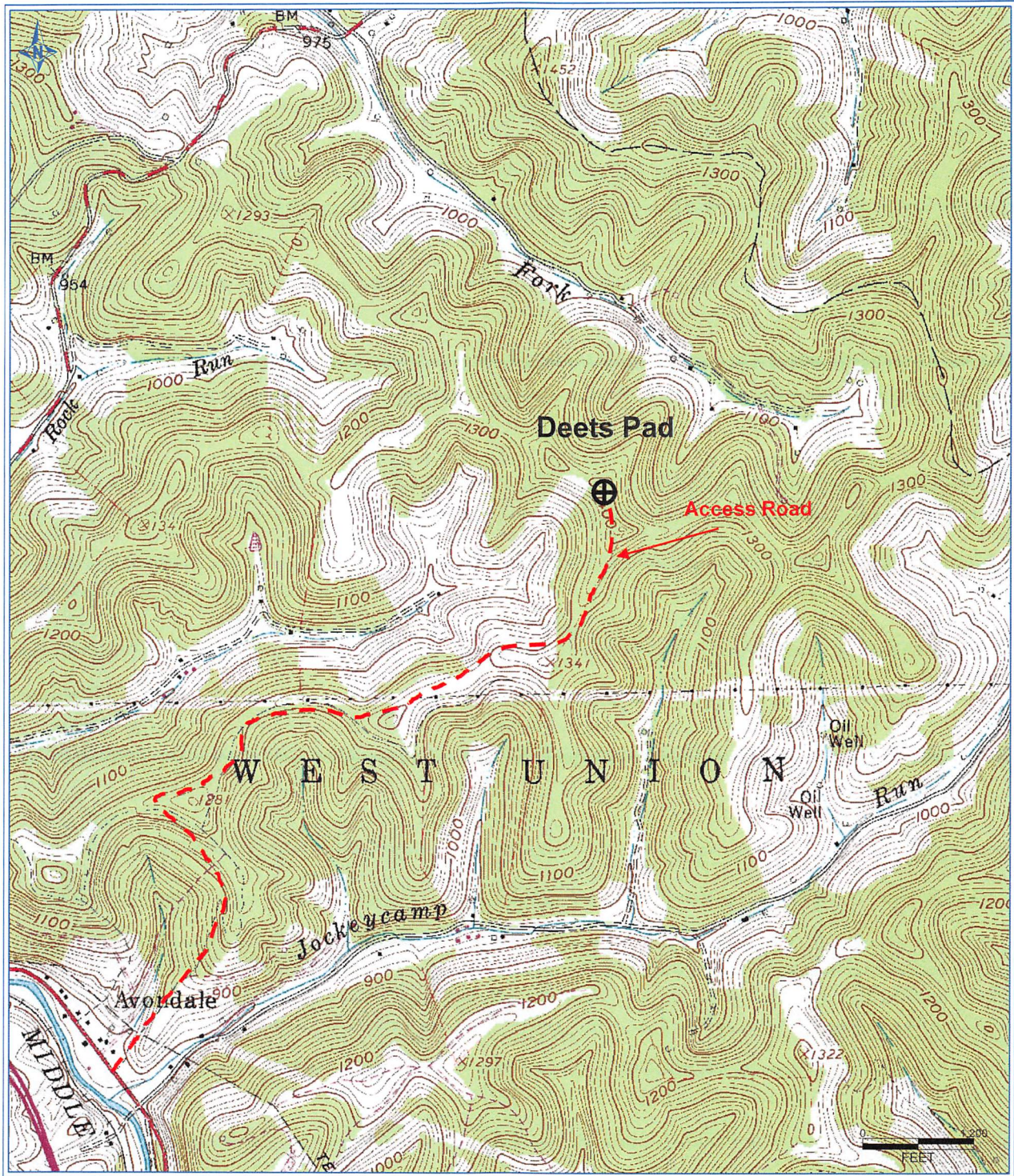
- Letter size copy of the topography map showing the well location.**

I the undersigned, hereby certify this data is correct to the best of my knowledge and belief and shows all the information required by law and the regulations issued and prescribed by the Office of Oil and Gas.

[Signature]
Signature

Permitting Agent
Title

10.17.2019
Date



RECEIVED
Office of Oil and Gas

OCT 23 2019

WV Department of
Environmental Protection

Antero Resources Corporation

Appalachian Basin
Telstar Unit 2H - Deets Pad
Doddridge County

Quadrangle: West Union
Watershed: Middle Island Creek
District: West Union
Date: 10-9-2019