



ANTERO RESOURCES CORPORATION

Location: Doddridge Co., WV
 Field: Doddridge
 Facility: Genevieve Pad

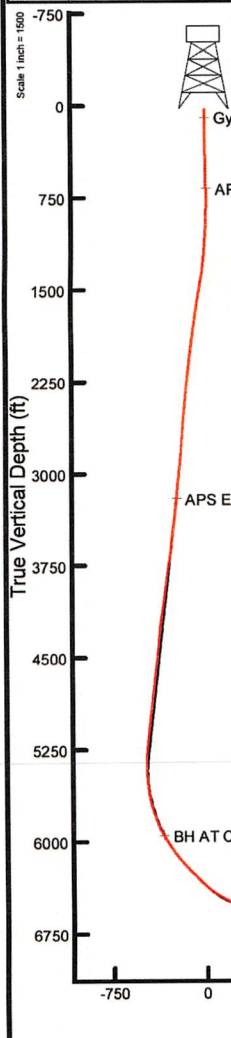
Slot: Slot B
 Well: Lyle Unit 2H
 Wellbore: Lyle Unit 2H PWB



Plot reference wellpath is Lyle Unit 2H PWP Rev-B.0	Grid System: NAD27 / UTM Zone 17 North, US feet
True vertical depths are referenced to H&P 519 (RKB)	North Reference: Grid north
Reference wellpath measured depths are referenced to H&P 519 (RKB)	Scale: True distance
H&P 519 (RKB) to Mean Sea Level: 916 feet	Coordinates are in feet referenced to Slot
Mean Sea Level to Ground level (At Slot Slot B): -886 feet	Depths are in feet
Offset wellpath MDs are referenced to each path's default MD datum	Created by: edsanyar on 2024-04-17; Database: WA_MPL_EASTERNUS_Deb

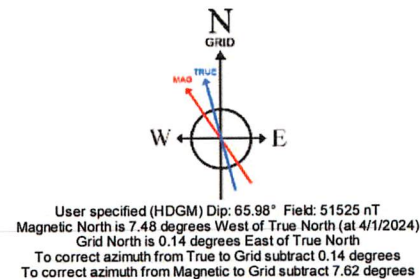
Location Information				
Facility Name	Grid East (US ft)	Grid North (US ft)	Latitude	Longitude
Genevieve Pad	1702116.720	14272528.020	39°18'12.7297"N	80°46'54.7976"W
Slot	Local N (ft)	Local E (ft)	Grid East (US ft)	Grid North (US ft)
Slot B	12.30	-8.55	1702108.170	14272540.320
			39°18'12.8515"N	80°46'54.9061"W
Comment				
Lyle Unit 2H				
H&P 519 (RKB) to Ground level (At Slot Slot B)				30ft
Mean Sea Level to Ground level (At Slot Slot B)				-886ft
H&P 519 (RKB) to Mean Sea Level				916ft

Well Data			
Slot	Well	Wellbore	Wellpath
Slot B	Lyle Unit 2H	Lyle Unit 2H AWB	Lyle Unit 2H AWP Proj: 15256'
Slot B	Lyle Unit 2H	Lyle Unit 2H PWB	Lyle Unit 2H PWP Rev-B.0



Well Profile Data							
Design Comment	MD (ft)	Inc (")	Az (°)	TVD (ft)	Local N (ft)	Local E (ft)	VS (ft)
Tie On	3206.00	13.850	275.550	3119.37	40.58	-617.76	-229.29
Proj. to Bottom	3288.00	13.850	275.550	3198.99	42.48	-637.29	-237.13
Drill Out	3368.00	13.850	275.550	3276.66	44.33	-656.35	-244.78
End of 3D Arc	3498.76	16.438	274.097	3402.87	47.17	-690.39	-257.98
Curve KOP	5479.81	16.438	274.097	5302.95	87.22	-1249.54	-468.68
End of 3D Arc	6524.05	45.000	165.000	6238.59	-284.96	-1305.27	-131.87
Hold	6674.05	45.000	165.000	6344.65	-387.41	-1277.82	-25.95
POE	7059.52	75.733	162.018	6533.00	-704.40	-1182.57	304.96
Landing Pt.	7249.10	90.900	162.018	6555.00	-882.98	-1124.61	492.71
BHL	15248.10	90.900	162.018	6429.36	-8490.32	1344.52	8490.72

APS EM <8-3/4"> (3206')(3293'-6129') : 13.05° Inc, 3293.00ft MD, 3203.99ft TVD, -237.09ft VS

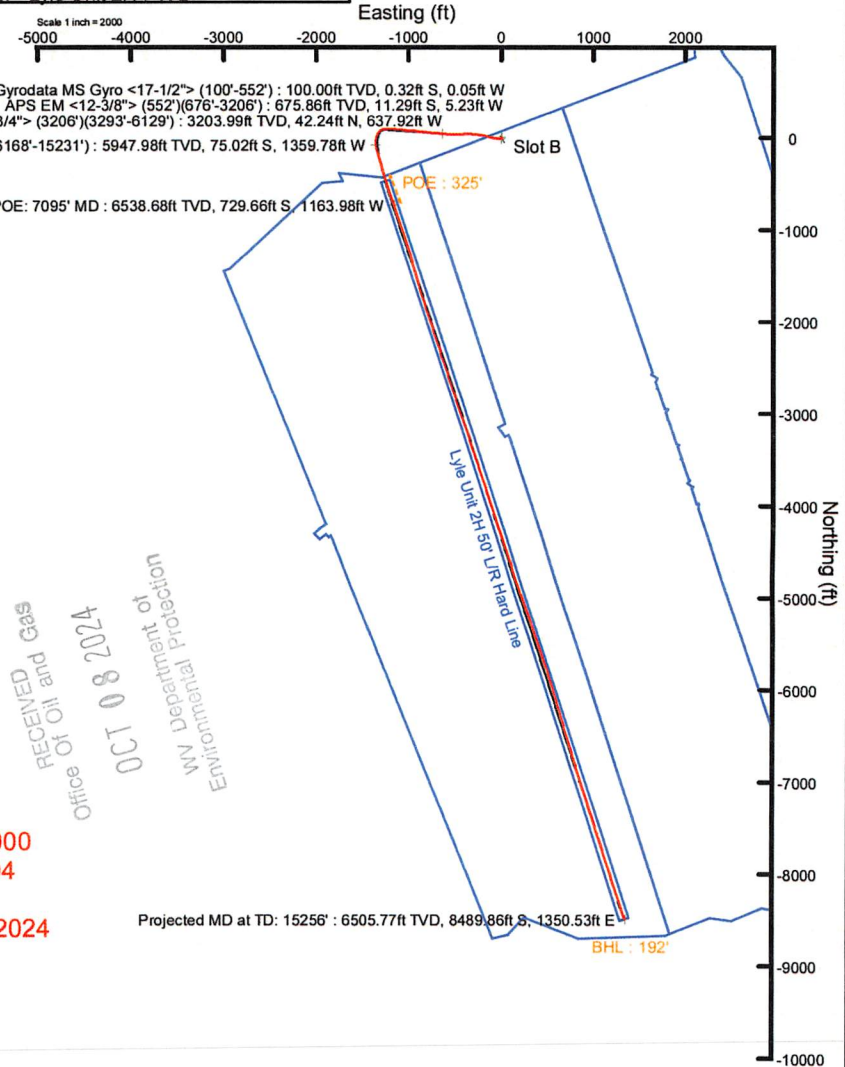


BH AT Curve <8-1/2"> (6129')(6168'-15231') : 30.39° Inc, 6168.00ft MD, 5947.98ft TVD, -348.39ft VS

Marcellus POE: 7095' MD : 76.45° Inc, 7095.00ft MD, 6538.68ft TVD, 334.72ft VS

API: 47-017-06961-0000
 BH Job #: 112150804
 Rig: H&P 519
 Duration: 4/3/2024-4/5/2024

Projected MD at TD: 15256' : 90.43° Inc, 15256.00ft MD, 6505.77ft TVD, 8492.14ft VS



RECEIVED
 Office of Oil and Gas
 OCT 08 2024
 Department of Environmental Protection
 WV

Vertical Section (ft)
 Azimuth 162.02° with reference 0.00 N, 0.00 E

Scale 1 inch = 1500



Actual Wellpath Report

Lyle Unit 2H AWP Proj: 15256'
Page 1 of 10



REFERENCE WELLPATH IDENTIFICATION

Operator	ANTERO RESOURCES CORPORATION	Well	Lyle Unit 2H
Field	Doddridge	API	47-017-06961-0000
Facility	Genevieve Pad	Wellbore	Lyle Unit 2H AWB
Slot	Slot B		

REPORT SETUP INFORMATION

Projection System	NAD27 / UTM Zone 17 North, US feet	Software System	WellArchitect® 6.0
North Reference	Grid	User	Edsaryar
Scale	0.999604	Report Generated	4/16/2024 at 4:17:15 PM
Convergence at slot	0.14° East	Database	WA_MPL_EASTERNUS_Defn

WELLPATH LOCATION

	Local coordinates		Grid coordinates		Geographic coordinates	
	North[ft]	East[ft]	Easting[US ft]	Northing[US ft]	Latitude	Longitude
Slot Location	12.30	-8.55	1702108.17	14272540.32	39°18'12.8515"N	80°46'54.9061"W
Facility Reference Pt			1702116.72	14272528.02	39°18'12.7297"N	80°46'54.7976"W
Field Reference Pt			0.00	0.00	0°00'0.0000"	85°29'19.3013"W

WELLPATH DATUM

Calculation method	Minimum curvature	H&P 519 (RKB) to Facility Vertical Datum	916.00ft
Horizontal Reference Pt	Slot	H&P 519 (RKB) to Mean Sea Level	916.00ft
Vertical Reference Pt	H&P 519 (RKB)	H&P 519 (RKB) to Ground Level at Slot (Slot B)	30.00ft
MD Reference Pt	H&P 519 (RKB)	Section Origin	N 0.00, E 0.00 ft
Field Vertical Reference	Mean Sea Level	Section Azimuth	162.02°

RECEIVED
 Office Of Oil and Gas
 OCT 08 2024
 WV Department of
 Environmental Protection



Actual Wellpath Report

Lyle Unit 2H AWP Proj: 15256'
Page 2 of 10



REFERENCE WELLPATH IDENTIFICATION			
Operator	ANTERO RESOURCES CORPORATION	Well	Lyle Unit 2H
Field	Doddridge	API	47-017-06961-0000
Facility	Genevieve Pad	Wellbore	Lyle Unit 2H AWB
Slot	Slot B		

WELLPATH DATA (170 stations) † = interpolated, ‡ = extrapolated station																
MD [ft]	Inclination [°]	Azimuth [°]	TVD [ft]	Vert Sect [ft]	North [ft]	East [ft]	Grid East [US ft]	Grid North [US ft]	Latitude	Longitude	Closure Dist [ft]	Closure Dir [°]	DLS [°/100ft]	Build Rate [°/100ft]	Turn Rate [°/100ft]	Comments
0.00†	0.000	189.340	0.00	0.00	0.00	0.00	1702108.17	14272540.32	39°18'12.8515"N	80°46'54.9061"W	0.00	0.000	0.00	0.00	0.00	
30.00	0.000	189.340	30.00	0.00	0.00	0.00	1702108.17	14272540.32	39°18'12.8515"N	80°46'54.9061"W	0.00	0.000	0.00	0.00	0.00	
100.00	0.530	189.340	100.00	0.29	-0.32	-0.05	1702108.12	14272540.00	39°18'12.8484"N	80°46'54.9068"W	0.32	189.340	0.76	0.76	0.00	Gyrodata MS Gyro <17-1/2"> (100'-552')
200.00	0.850	203.870	199.99	1.25	-1.45	-0.43	1702107.74	14272538.87	39°18'12.8372"N	80°46'54.9116"W	1.52	196.392	0.36	0.32	14.53	
300.00	1.120	206.790	299.98	2.50	-3.00	-1.17	1702107.00	14272537.32	39°18'12.8219"N	80°46'54.9210"W	3.22	201.248	0.27	0.27	2.92	
400.00	1.310	202.200	399.95	4.06	-4.94	-2.04	1702106.13	14272535.39	39°18'12.8028"N	80°46'54.9322"W	5.34	202.464	0.21	0.19	-4.59	
500.00	1.470	202.020	499.92	5.92	-7.18	-2.95	1702105.22	14272533.14	39°18'12.7806"N	80°46'54.9439"W	7.77	202.352	0.16	0.16	-0.18	
552.00	1.280	195.780	551.91	6.91	-8.36	-3.36	1702104.81	14272531.96	39°18'12.7690"N	80°46'54.9491"W	9.01	201.905	0.46	-0.37	-12.00	
676.00	2.020	223.190	675.86	9.12	-11.29	-5.23	1702102.94	14272529.04	39°18'12.7401"N	80°46'54.9730"W	12.44	204.879	0.86	0.60	22.10	APS EM <12-3/8"> (552')(676'-3206')
855.00	4.270	267.060	854.60	8.91	-13.93	-14.05	1702094.13	14272526.40	39°18'12.7142"N	80°46'55.0852"W	19.78	225.249	1.76	1.26	24.51	
945.00	5.380	278.910	944.28	6.13	-13.45	-21.57	1702086.61	14272526.88	39°18'12.7192"N	80°46'55.1808"W	25.41	238.054	1.65	1.23	13.17	
1035.00	6.310	279.330	1033.81	1.96	-11.99	-30.61	1702077.57	14272528.33	39°18'12.7338"N	80°46'55.2959"W	32.88	248.609	1.03	1.03	0.47	
1129.00	8.200	280.120	1127.06	-3.57	-9.98	-42.31	1702065.87	14272530.35	39°18'12.7540"N	80°46'55.4446"W	43.47	256.733	2.01	2.01	0.84	
1224.00	10.700	279.440	1220.76	-10.83	-7.34	-57.68	1702050.51	14272532.98	39°18'12.7804"N	80°46'55.6401"W	58.15	262.749	2.63	2.63	-0.72	
1318.00	13.060	280.260	1312.74	-19.87	-4.02	-76.75	1702031.46	14272536.31	39°18'12.8137"N	80°46'55.8825"W	76.85	267.005	2.52	2.51	0.87	
1412.00	15.220	281.070	1403.89	-30.89	0.25	-99.31	1702008.90	14272540.57	39°18'12.8563"N	80°46'56.1694"W	99.31	270.142	2.31	2.30	0.86	
1506.00	17.380	284.420	1494.10	-44.40	6.11	-125.02	1701983.20	14272546.43	39°18'12.9149"N	80°46'56.4962"W	125.17	272.799	2.51	2.30	3.56	
1601.00	17.570	283.960	1584.72	-59.59	13.10	-152.67	1701955.56	14272553.42	39°18'12.9847"N	80°46'56.8478"W	153.24	274.906	0.25	0.20	-0.48	
1695.00	16.620	281.740	1674.57	-73.76	19.26	-179.61	1701928.64	14272559.57	39°18'13.0462"N	80°46'57.1903"W	180.64	276.121	1.23	-1.01	-2.36	
1789.00	17.890	280.380	1764.34	-87.29	24.60	-206.97	1701901.28	14272564.91	39°18'13.0996"N	80°46'57.5382"W	208.43	276.778	1.42	1.35	-1.45	
1883.00	18.450	279.900	1853.65	-101.10	29.76	-235.83	1701872.44	14272570.07	39°18'13.1513"N	80°46'57.9051"W	237.70	277.192	0.62	0.60	-0.51	
1978.00	18.280	278.330	1943.81	-114.73	34.50	-265.38	1701842.90	14272574.81	39°18'13.1989"N	80°46'58.2809"W	267.61	277.407	0.55	-0.18	-1.65	
2073.00	18.660	273.670	2033.92	-126.95	37.63	-295.29	1701813.00	14272577.94	39°18'13.2305"N	80°46'58.6613"W	297.68	277.263	1.60	0.40	-4.91	
2168.00	18.570	271.190	2123.95	-137.52	38.92	-325.58	1701782.72	14272579.22	39°18'13.2440"N	80°46'59.0466"W	327.90	276.817	0.84	-0.09	-2.61	
2262.00	18.780	270.410	2213.00	-147.21	39.34	-355.67	1701752.64	14272579.64	39°18'13.2488"N	80°46'59.4294"W	357.84	276.311	0.35	0.22	-0.83	
2356.00	18.570	269.400	2302.05	-156.45	39.29	-385.77	1701722.55	14272579.59	39°18'13.2490"N	80°46'59.8123"W	387.77	275.815	0.41	-0.22	-1.07	
2451.00	18.020	267.630	2392.25	-164.93	38.52	-415.58	1701692.76	14272578.83	39°18'13.2422"N	80°47'0.1915"W	417.36	275.296	0.82	-0.58	-1.86	
2545.00	18.020	267.370	2481.64	-172.69	37.26	-444.63	1701663.72	14272577.56	39°18'13.2303"N	80°47'0.5611"W	446.19	274.790	0.09	0.00	-0.28	
2640.00	16.150	269.150	2572.45	-180.47	36.39	-472.52	1701635.84	14272576.69	39°18'13.2224"N	80°47'0.9159"W	473.92	274.403	2.04	-1.97	1.87	
2734.00	15.380	268.000	2662.91	-187.75	35.76	-498.05	1701610.32	14272576.06	39°18'13.2168"N	80°47'1.2407"W	499.33	274.106	0.88	-0.82	-1.22	

Office of Oil and Gas
 Environmental Protection
 OCT 08 2024
 RECEIVED



Actual Wellpath Report

Lyle Unit 2H AWP Proj: 15256'
Page 3 of 10



REFERENCE WELLPATH IDENTIFICATION

Operator	ANTERO RESOURCES CORPORATION	Well	Lyle Unit 2H
Field	Doddridge	API	47-017-06961-0000
Facility	Genevieve Pad	Wellbore	Lyle Unit 2H AWB
Slot	Slot B		

WELLPATH DATA (170 stations)

MD [ft]	Inclination [°]	Azimuth [°]	TVD [ft]	Vert Sect [ft]	North [ft]	East [ft]	Grid East [US ft]	Grid North [US ft]	Latitude	Longitude	Closure Dist [ft]	Closure Dir [°]	DLS [°/100ft]	Build Rate [°/100ft]	Turn Rate [°/100ft]	Comments
2828.00	15.130	266.330	2753.60	-194.22	34.54	-522.75	1701585.63	14272574.84	39°18'13.2053"N	80°47'1.5549"W	523.89	273.780	0.54	-0.27	-1.78	
2923.00	14.880	271.530	2845.36	-201.35	34.07	-547.32	1701561.07	14272574.37	39°18'13.2013"N	80°47'1.8675"W	548.38	273.562	1.44	-0.26	5.47	
3017.00	14.730	276.610	2936.25	-210.36	35.77	-571.26	1701537.14	14272576.07	39°18'13.2186"N	80°47'2.1719"W	572.37	273.583	1.39	-0.16	5.40	
3112.00	14.350	275.730	3028.20	-220.12	38.33	-594.97	1701513.44	14272578.64	39°18'13.2445"N	80°47'2.4735"W	596.20	273.686	0.46	-0.40	-0.93	
3206.00	13.850	275.550	3119.37	-229.29	40.58	-617.76	1701490.66	14272580.89	39°18'13.2673"N	80°47'2.7633"W	619.09	273.759	0.53	-0.53	-0.19	
3293.00	13.050	273.770	3203.99	-237.09	42.24	-637.92	1701470.50	14272582.54	39°18'13.2841"N	80°47'3.0198"W	639.32	273.788	1.04	-0.92	-2.05	APS EM <8-3/4"> (3206')(3293'-6129')
3391.00	15.180	274.180	3299.02	-246.03	43.90	-661.76	1701446.67	14272584.20	39°18'13.3011"N	80°47'3.3230"W	663.22	273.795	2.18	2.17	0.42	
3485.00	17.550	276.690	3389.21	-256.59	46.45	-688.12	1701420.33	14272586.75	39°18'13.3269"N	80°47'3.6582"W	689.68	273.862	2.63	2.52	2.67	
3580.00	17.530	274.180	3479.79	-267.97	49.16	-716.61	1701391.84	14272589.46	39°18'13.3544"N	80°47'4.0206"W	718.29	273.924	0.80	-0.02	-2.64	
3674.00	17.110	271.970	3569.53	-278.02	50.67	-744.55	1701363.92	14272590.97	39°18'13.3700"N	80°47'4.3759"W	746.27	273.893	0.83	-0.45	-2.35	
3769.00	17.840	277.900	3660.15	-289.14	53.15	-772.93	1701335.54	14272593.45	39°18'13.3951"N	80°47'4.7369"W	774.76	273.933	2.02	0.77	6.24	
3863.00	19.190	279.960	3749.29	-302.67	57.80	-802.41	1701306.08	14272598.10	39°18'13.4418"N	80°47'5.1118"W	804.49	274.120	1.60	1.44	2.19	
3958.00	19.010	275.890	3839.06	-316.25	62.09	-833.18	1701275.32	14272602.38	39°18'13.4849"N	80°47'5.5031"W	835.49	274.262	1.41	-0.19	-4.28	
4052.00	17.720	270.950	3928.28	-327.08	63.90	-862.72	1701245.80	14272604.19	39°18'13.5035"N	80°47'5.8788"W	865.08	274.236	2.15	-1.37	-5.26	
4146.00	17.750	276.430	4017.82	-337.65	65.74	-891.26	1701217.26	14272606.03	39°18'13.5224"N	80°47'6.2418"W	893.68	274.218	1.78	0.03	5.83	
4241.00	18.100	281.160	4108.21	-350.82	70.22	-920.13	1701188.40	14272610.51	39°18'13.5673"N	80°47'6.6089"W	922.81	274.364	1.58	0.37	4.98	
4335.00	17.560	277.100	4197.70	-363.94	74.79	-948.53	1701160.02	14272615.08	39°18'13.6132"N	80°47'6.9700"W	951.47	274.509	1.44	-0.57	-4.32	
4429.00	16.700	272.910	4287.53	-374.77	77.23	-976.09	1701132.47	14272617.52	39°18'13.6380"N	80°47'7.3206"W	979.14	274.524	1.60	-0.91	-4.46	
4524.00	15.090	268.010	4378.90	-383.04	77.50	-1002.08	1701106.48	14272617.79	39°18'13.6412"N	80°47'7.6512"W	1005.08	274.422	2.20	-1.69	-5.16	
4618.00	15.020	275.660	4469.68	-391.30	78.27	-1026.44	1701082.14	14272618.56	39°18'13.6494"N	80°47'7.9610"W	1029.42	274.361	2.11	-0.07	8.14	
4713.00	15.580	281.800	4561.32	-402.57	82.10	-1051.18	1701057.41	14272622.38	39°18'13.6878"N	80°47'8.2756"W	1054.38	274.466	1.80	0.59	6.46	
4807.00	14.540	275.500	4652.10	-413.54	85.81	-1075.28	1701033.32	14272626.09	39°18'13.7251"N	80°47'8.5821"W	1078.70	274.563	2.06	-1.11	-6.70	
4901.00	15.650	276.110	4742.85	-423.42	88.29	-1099.63	1701008.97	14272628.57	39°18'13.7501"N	80°47'8.8918"W	1103.17	274.590	1.19	1.18	0.65	
4996.00	15.920	274.090	4834.27	-433.54	90.58	-1125.37	1700983.25	14272630.87	39°18'13.7734"N	80°47'9.2192"W	1129.01	274.602	0.64	0.28	-2.13	
5090.00	17.390	274.920	4924.32	-443.85	92.71	-1152.23	1700956.40	14272632.99	39°18'13.7950"N	80°47'9.5607"W	1155.95	274.600	1.58	1.56	0.88	
5185.00	18.200	271.440	5014.78	-454.31	94.30	-1181.20	1700927.44	14272634.58	39°18'13.8114"N	80°47'9.9293"W	1184.96	274.564	1.41	0.85	-3.66	
5279.00	16.980	269.950	5104.38	-463.42	94.65	-1209.61	1700899.05	14272634.94	39°18'13.8156"N	80°47'10.2906"W	1213.30	274.474	1.38	-1.30	-1.59	
5374.00	15.990	274.720	5195.48	-472.74	95.72	-1236.52	1700872.14	14272636.00	39°18'13.8268"N	80°47'10.6329"W	1240.22	274.426	1.76	-1.04	5.02	
5468.00	14.940	267.250	5286.09	-480.92	96.20	-1261.53	1700847.14	14272636.48	39°18'13.8321"N	80°47'10.9511"W	1265.19	274.361	2.39	-1.12	-7.95	
5562.00	13.940	250.360	5377.16	-483.78	91.81	-1284.31	1700824.37	14272632.10	39°18'13.7893"N	80°47'11.2410"W	1287.58	274.089	4.59	-1.06	-17.97	

RECEIVED
 Office Of Oil and Gas
 OCT 08 2024
 Environmental Protection
 WY Department of



Actual Wellpath Report

Lyle Unit 2H AWP Proj: 15256'
Page 4 of 10



REFERENCE WELLPATH IDENTIFICATION			
Operator	ANTERO RESOURCES CORPORATION	Well	Lyle Unit 2H
Field	Doddridge	API	47-017-06961-0000
Facility	Genevieve Pad	Wellbore	Lyle Unit 2H AWB
Slot	Slot B		

WELLPATH DATA (170 stations) † = interpolated, ‡ = extrapolated station																	
MD (ft)	Inclination (°)	Azimuth (°)	TVD (ft)	Vert Sect (ft)	North (ft)	East (ft)	Grid East (US ft)	Grid North (US ft)	Latitude	Longitude	Closure Dist (ft)	Closure Dir (°)	DLS (°/100ft)	Build Rate (°/100ft)	Turn Rate (°/100ft)	Comments	
5657.00	14.290	235.190	5469.32	-480.05	81.27	-1304.72	1700803.97	14272621.56	39°18'13.6856"N	80°47'11.5009"W	1307.25	273.564	3.90	0.37	-15.97		
5754.00	14.400	223.560	5563.32	-470.83	65.69	-1322.86	1700785.83	14272605.99	39°18'13.5320"N	80°47'11.7322"W	1324.49	272.843	2.97	0.11	-11.99		
5848.00	16.750	208.990	5653.89	-456.01	45.36	-1337.49	1700771.21	14272585.67	39°18'13.3314"N	80°47'11.9189"W	1338.26	271.943	4.84	2.50	-15.50		
5943.00	20.370	199.630	5743.96	-433.56	17.80	-1349.68	1700759.02	14272558.12	39°18'13.0593"N	80°47'12.0749"W	1349.80	270.756	4.92	3.81	-9.85		
6037.00	23.250	189.420	5831.25	-404.11	-15.93	-1358.22	1700750.49	14272524.40	39°18'12.7261"N	80°47'12.1845"W	1358.32	269.328	5.06	3.06	-10.86		
6129.00	28.550	179.040	5914.02	-366.92	-55.87	-1360.83	1700747.88	14272484.47	39°18'12.3314"N	80°47'12.2188"W	1361.98	267.649	7.56	5.76	-11.28		
6168.00	30.390	174.820	5947.98	-348.39	-75.02	-1359.78	1700748.93	14272465.33	39°18'12.1421"N	80°47'12.2061"W	1361.85	266.842	7.11	4.72	-10.82	BH AT Curve <8-1/2"> (6129')(6168'-15231')	
6262.00	33.300	167.110	6027.86	-299.47	-123.88	-1351.87	1700756.83	14272416.49	39°18'11.6590"N	80°47'12.1070"W	1357.54	264.764	5.32	3.10	-8.20		
6356.00	37.110	162.920	6104.66	-245.39	-176.17	-1337.78	1700770.92	14272364.22	39°18'11.1419"N	80°47'11.9293"W	1349.33	262.498	4.80	4.05	-4.46		
6450.00	41.490	163.440	6177.38	-185.88	-233.15	-1320.57	1700788.13	14272307.26	39°18'10.5783"N	80°47'11.7120"W	1340.99	259.987	4.67	4.66	0.55		
6490.00†	43.064	163.573	6206.98	-158.98	-258.95	-1312.93	1700795.76	14272281.47	39°18'10.3231"N	80°47'11.6156"W	1338.22	258.843	3.94	3.94	0.33	Sycamore: 6490' MD	
6544.00	45.190	163.740	6245.74	-121.40	-295.03	-1302.35	1700806.34	14272245.41	39°18'9.9663"N	80°47'11.4821"W	1335.35	257.236	3.94	3.94	0.31		
6639.00	45.280	162.410	6312.64	-53.96	-359.55	-1282.72	1700825.96	14272180.91	39°18'9.3281"N	80°47'11.2343"W	1332.16	254.341	1.00	0.09	-1.40		
6672.00†	46.628	162.366	6335.58	-30.24	-382.16	-1275.54	1700833.14	14272158.31	39°18'9.1045"N	80°47'11.1437"W	1331.56	253.321	4.09	4.09	-0.13	Middlesex: 6672' MD	
6733.00	49.120	162.290	6376.49	15.00	-425.26	-1261.81	1700846.87	14272115.22	39°18'8.6781"N	80°47'10.9703"W	1331.54	251.375	4.09	4.09	-0.12		
6828.00	56.700	163.100	6433.74	90.71	-497.57	-1239.31	1700869.36	14272042.95	39°18'7.9630"N	80°47'10.6862"W	1335.46	248.125	8.01	7.98	0.85		
6888.00†	61.116	162.439	6464.72	142.08	-546.63	-1224.08	1700884.57	14271993.91	39°18'7.4777"N	80°47'10.4941"W	1340.59	245.936	7.42	7.36	-1.10	Burkett: 6888' MD	
6922.00	63.620	162.090	6480.49	172.20	-575.32	-1214.91	1700893.74	14271965.23	39°18'7.1940"N	80°47'10.3782"W	1344.24	244.660	7.42	7.36	-1.03		
6951.00†	65.934	162.087	6492.85	198.43	-600.28	-1206.84	1700901.81	14271940.28	39°18'6.9471"N	80°47'10.2763"W	1347.89	243.554	7.98	7.98	-0.01	Tully: 6951' MD	
7017.00	71.200	162.080	6516.95	259.84	-658.71	-1187.95	1700920.69	14271881.87	39°18'6.3691"N	80°47'10.0378"W	1358.35	240.992	7.98	7.98	-0.01		
7095.00†	76.452	160.604	6538.68	334.72	-729.66	-1163.98	1700944.65	14271810.95	39°18'5.6673"N	80°47'9.7350"W	1373.77	237.918	6.97	6.73	-1.89	Marcellus POE: 7095' MD	
7111.00	77.530	160.310	6542.28	350.31	-744.35	-1158.76	1700949.87	14271796.27	39°18'5.5220"N	80°47'9.6691"W	1377.24	237.285	6.97	6.74	-1.84		
7206.00	84.640	162.590	6556.99	444.09	-833.27	-1128.95	1700979.67	14271707.38	39°18'4.6424"N	80°47'9.2925"W	1403.16	233.569	7.85	7.48	2.40		
7300.00	90.460	160.460	6561.01	537.95	-922.30	-1099.20	1701009.41	14271618.39	39°18'3.7618"N	80°47'8.9167"W	1434.87	230.001	6.59	6.19	-2.27		
7394.00	91.050	161.610	6559.77	631.93	-1011.19	-1068.65	1701039.95	14271529.54	39°18'2.8826"N	80°47'8.5308"W	1471.23	226.583	1.37	0.63	1.22		
7486.00	91.020	162.930	6558.11	723.91	-1098.80	-1040.64	1701067.95	14271441.96	39°18'2.0160"N	80°47'8.1771"W	1513.37	223.443	1.43	-0.03	1.43		
7583.00	90.280	161.580	6557.01	820.90	-1191.18	-1011.08	1701097.50	14271349.62	39°18'1.1022"N	80°47'7.8039"W	1562.43	220.325	1.59	-0.76	-1.39		
7677.00	91.020	165.090	6555.94	914.85	-1281.21	-984.13	1701124.44	14271259.62	39°18'0.2118"N	80°47'7.4638"W	1615.55	217.529	3.82	0.79	3.73		
7772.00	90.920	165.350	6554.33	1009.69	-1373.05	-959.89	1701148.66	14271167.82	39°17'59.3035"N	80°47'7.1583"W	1675.31	214.957	0.29	-0.11	0.27		
7866.00	91.170	164.730	6552.62	1103.55	-1463.85	-935.63	1701172.91	14271077.05	39°17'58.4055"N	80°47'6.8525"W	1737.31	212.585	0.71	0.27	-0.66		

RECEIVED
Office Of Oil and Gas
OCT 08 2024
WV Department of
Environmental Protection



Actual Wellpath Report

Lyle Unit 2H AWP Proj: 15256'

Page 5 of 10



REFERENCE WELLPATH IDENTIFICATION

Operator	ANTERO RESOURCES CORPORATION	Well	Lyle Unit 2H
Field	Doddridge	API	47-017-06961-0000
Facility	Genevieve Pad	Wellbore	Lyle Unit 2H AWB
Slot	Slot B		

WELLPATH DATA (170 stations)

MD [ft]	Inclination [°]	Azimuth [°]	TVD [ft]	Vert Sect [ft]	North [ft]	East [ft]	Grid East [US ft]	Grid North [US ft]	Latitude	Longitude	Closure Dist [ft]	Closure Dir [°]	DLS [°/100ft]	Build Rate [°/100ft]	Turn Rate [°/100ft]	Comments
7960.00	91.230	165.510	6550.65	1197.39	-1554.68	-911.50	1701197.03	14270986.26	39°17'57.5072"N	80°47'6.5482"W	1802.18	210.383	0.83	0.06	0.83	
8054.00	92.030	163.280	6547.98	1291.26	-1645.17	-886.23	1701222.30	14270895.81	39°17'56.6122"N	80°47'6.2295"W	1868.68	208.311	2.52	0.85	-2.37	
8149.00	91.080	161.090	6545.40	1386.22	-1735.57	-857.17	1701251.34	14270805.44	39°17'55.7180"N	80°47'5.8626"W	1935.71	206.284	2.51	-1.00	-2.31	
8243.00	90.620	163.010	6544.00	1480.20	-1824.98	-828.21	1701280.29	14270716.06	39°17'54.8336"N	80°47'5.4969"W	2004.12	204.409	2.10	-0.49	2.04	
8337.00	91.260	161.530	6542.46	1574.19	-1914.50	-799.59	1701308.90	14270626.58	39°17'53.9481"N	80°47'5.1356"W	2074.77	202.668	1.72	0.68	-1.57	
8431.00	91.110	162.450	6540.52	1668.17	-2003.88	-770.53	1701337.95	14270537.24	39°17'53.0641"N	80°47'4.7687"W	2146.91	201.033	0.99	-0.16	0.98	
8525.00	90.890	162.220	6538.88	1762.15	-2093.43	-742.01	1701366.45	14270447.72	39°17'52.1783"N	80°47'4.4086"W	2221.04	199.517	0.34	-0.23	-0.24	
8619.00	91.050	162.110	6537.28	1856.14	-2182.90	-713.22	1701395.23	14270358.29	39°17'51.2934"N	80°47'4.0452"W	2296.46	198.094	0.21	0.17	-0.12	
8713.00	91.390	161.980	6535.28	1950.11	-2272.30	-684.25	1701424.19	14270268.92	39°17'50.4091"N	80°47'3.6794"W	2373.09	196.759	0.39	0.36	-0.14	
8808.00	90.800	162.310	6533.47	2045.10	-2362.71	-655.13	1701453.30	14270178.55	39°17'49.5148"N	80°47'3.3117"W	2451.86	195.498	0.71	-0.62	0.35	
8902.00	90.950	162.100	6532.03	2139.09	-2452.20	-626.41	1701482.01	14270089.09	39°17'48.6296"N	80°47'2.9490"W	2530.95	194.330	0.27	0.16	-0.22	
8996.00	90.950	161.610	6530.47	2233.07	-2541.52	-597.14	1701511.27	14269999.82	39°17'47.7462"N	80°47'2.5794"W	2610.72	193.222	0.52	0.00	-0.52	
9090.00	91.140	162.030	6528.76	2327.05	-2630.81	-567.81	1701540.58	14269910.56	39°17'46.8630"N	80°47'2.2092"W	2691.39	192.179	0.49	0.20	0.45	
9184.00	91.020	162.210	6526.99	2421.04	-2720.25	-538.96	1701569.43	14269821.15	39°17'45.9782"N	80°47'1.8449"W	2773.13	191.207	0.23	-0.13	0.19	
9278.00	90.710	162.020	6525.57	2515.03	-2809.70	-510.09	1701598.28	14269731.74	39°17'45.0935"N	80°47'1.4804"W	2855.63	190.290	0.39	-0.33	-0.20	
9372.00	90.830	161.250	6524.31	2609.02	-2898.90	-480.48	1701627.88	14269642.57	39°17'44.2111"N	80°47'1.1065"W	2938.45	189.411	0.83	0.13	-0.82	
9466.00	91.140	161.110	6522.69	2702.99	-2987.86	-450.16	1701658.19	14269553.64	39°17'43.3312"N	80°47'0.7235"W	3021.59	188.568	0.36	0.33	-0.15	
9560.00	90.680	161.390	6521.20	2796.97	-3076.86	-419.95	1701688.39	14269464.68	39°17'42.4508"N	80°47'0.3420"W	3105.39	187.772	0.57	-0.49	0.30	
9655.00	90.620	161.390	6520.12	2891.96	-3166.89	-389.63	1701718.69	14269374.69	39°17'41.5603"N	80°46'59.9591"W	3190.77	187.014	0.06	-0.06	0.00	
9749.00	90.310	161.970	6519.36	2985.95	-3256.12	-360.09	1701748.22	14269285.49	39°17'40.6776"N	80°46'59.5860"W	3275.97	186.311	0.70	-0.33	0.62	
9843.00	90.430	161.340	6518.75	3079.95	-3345.34	-330.51	1701777.80	14269196.31	39°17'39.7951"N	80°46'59.2125"W	3361.63	185.642	0.68	0.13	-0.67	
9937.00	90.740	161.000	6517.79	3173.93	-3434.31	-300.17	1701808.12	14269107.38	39°17'38.9151"N	80°46'58.8293"W	3447.40	184.995	0.49	0.33	-0.36	
10031.00	90.580	162.110	6516.71	3267.92	-3523.47	-270.43	1701837.85	14269018.25	39°17'38.0331"N	80°46'58.4538"W	3533.83	184.389	1.19	-0.17	1.18	
10125.00	90.950	161.090	6515.45	3361.91	-3612.66	-240.76	1701867.51	14268929.10	39°17'37.1509"N	80°46'58.0791"W	3620.67	183.813	1.15	0.39	-1.09	
10219.00	90.150	160.490	6514.55	3455.88	-3701.42	-209.83	1701898.42	14268840.37	39°17'36.2729"N	80°46'57.6885"W	3707.36	183.245	1.06	-0.85	-0.64	
10314.00	90.740	161.650	6513.81	3550.87	-3791.27	-179.02	1701929.23	14268750.55	39°17'35.3841"N	80°46'57.2992"W	3795.50	182.703	1.37	0.62	1.22	
10408.00	89.540	161.450	6513.58	3644.86	-3880.44	-149.27	1701958.96	14268661.42	39°17'34.5021"N	80°46'56.9236"W	3883.31	182.203	1.29	-1.28	-0.21	
10502.00	91.510	162.470	6512.72	3738.85	-3969.81	-120.16	1701988.06	14268572.09	39°17'33.6181"N	80°46'56.5561"W	3971.63	181.734	2.36	2.10	1.09	
10596.00	89.970	160.820	6511.51	3832.83	-4059.02	-90.56	1702017.64	14268482.92	39°17'32.7357"N	80°46'56.1824"W	4060.03	181.278	2.40	-1.64	-1.76	
10690.00	90.890	162.160	6510.80	3926.82	-4148.15	-60.72	1702047.47	14268393.82	39°17'31.8540"N	80°46'55.8056"W	4148.59	180.839	1.73	0.98	1.43	

RECEIVED
Office Of Oil and Gas
OCT 08 2024
WV Department of
Environmental Protection



Actual Wellpath Report

Lyle Unit 2H AWP Proj: 15256'

Page 6 of 10



REFERENCE WELLPATH IDENTIFICATION

Operator	ANTERO RESOURCES CORPORATION	Well	Lyle Unit 2H
Field	Doddridge	API	47-017-06961-0000
Facility	Genevieve Pad	Wellbore	Lyle Unit 2H AWB
Slot	Slot B		

WELLPATH DATA (170 stations)

MD [ft]	Inclination [°]	Azimuth [°]	TVD [ft]	Vert Sect [ft]	North [ft]	East [ft]	Grid East [US ft]	Grid North [US ft]	Latitude	Longitude	Closure Dist [ft]	Closure Dir [°]	DLS [°/100ft]	Build Rate [°/100ft]	Turn Rate [°/100ft]	Comments
10785.00	89.540	161.400	6510.44	4021.82	-4238.38	-31.02	1702077.16	14268303.63	39°17'30.9615"N	80°46'55.4306"W	4238.49	180.419	1.63	-1.42	-0.80	
10879.00	90.060	160.500	6510.77	4115.80	-4327.23	-0.34	1702107.83	14268214.81	39°17'30.0826"N	80°46'55.0431"W	4327.23	180.005	1.11	0.55	-0.96	
10974.00	90.680	161.000	6510.16	4210.78	-4416.92	30.98	1702139.14	14268125.16	39°17'29.1954"N	80°46'54.6475"W	4417.03	179.598	0.84	0.65	0.53	
11068.00	90.920	161.740	6508.85	4304.76	-4505.98	61.00	1702169.15	14268036.13	39°17'28.3144"N	80°46'54.2683"W	4506.39	179.224	0.83	0.26	0.79	
11162.00	90.150	161.460	6507.97	4398.75	-4595.17	90.67	1702198.81	14267946.98	39°17'27.4322"N	80°46'53.8937"W	4596.07	178.870	0.87	-0.82	-0.30	
11257.00	90.000	161.360	6507.84	4493.75	-4685.21	120.96	1702229.08	14267856.97	39°17'26.5415"N	80°46'53.5113"W	4686.78	178.521	0.19	-0.16	-0.11	
11351.00	90.580	161.550	6507.37	4587.74	-4774.33	150.86	1702258.97	14267767.89	39°17'25.6600"N	80°46'53.1338"W	4776.71	178.190	0.65	0.62	0.20	
11445.00	89.970	161.930	6506.92	4681.74	-4863.60	180.31	1702288.41	14267678.66	39°17'24.7770"N	80°46'52.7619"W	4866.94	177.877	0.76	-0.65	0.40	
11540.00	89.970	160.970	6506.97	4776.73	-4953.66	210.53	1702318.62	14267588.63	39°17'23.8861"N	80°46'52.3803"W	4958.13	177.566	1.01	0.00	-1.01	
11634.00	90.090	161.110	6506.92	4870.72	-5042.56	241.07	1702349.15	14267499.76	39°17'23.0067"N	80°46'51.9946"W	5048.32	177.263	0.20	0.13	0.15	
11728.00	89.910	160.680	6506.92	4964.70	-5131.38	271.84	1702379.90	14267410.98	39°17'22.1281"N	80°46'51.6061"W	5138.58	176.968	0.50	-0.19	-0.46	
11822.00	90.460	160.790	6506.61	5058.68	-5220.12	302.85	1702410.90	14267322.28	39°17'21.2503"N	80°46'51.2143"W	5228.90	176.680	0.60	0.59	0.12	
11916.00	88.710	161.120	6507.30	5152.65	-5308.97	333.52	1702441.56	14267233.46	39°17'20.3714"N	80°46'50.8270"W	5319.43	176.405	1.89	-1.86	0.35	
12011.00	92.090	161.970	6506.63	5247.63	-5399.06	363.59	1702471.62	14267143.40	39°17'19.4802"N	80°46'50.4474"W	5411.29	176.147	3.67	3.56	0.89	
12105.00	89.110	159.460	6505.65	5341.59	-5487.77	394.63	1702502.64	14267054.73	39°17'18.6028"N	80°46'50.0553"W	5501.94	175.887	4.14	-3.17	-2.67	
12199.00	89.010	161.120	6507.19	5435.53	-5576.25	426.33	1702534.33	14266966.29	39°17'17.7275"N	80°46'49.6549"W	5592.52	175.628	1.77	-0.11	1.77	
12293.00	90.550	160.620	6507.55	5529.50	-5665.05	457.13	1702565.12	14266877.52	39°17'16.8490"N	80°46'49.2659"W	5683.46	175.387	1.72	1.64	-0.53	
12388.00	89.820	163.030	6507.24	5624.50	-5755.30	486.76	1702594.74	14266787.30	39°17'15.9563"N	80°46'48.8919"W	5775.85	175.166	2.65	-0.77	2.54	
12483.00	89.970	162.290	6507.42	5719.49	-5845.99	515.07	1702623.04	14266696.66	39°17'15.0594"N	80°46'48.5346"W	5868.63	174.965	0.79	0.16	-0.78	
12577.00	90.340	163.180	6507.16	5813.48	-5935.75	542.97	1702650.93	14266606.93	39°17'14.1715"N	80°46'48.1825"W	5960.53	174.773	1.03	0.39	0.95	
12671.00	89.720	163.170	6507.11	5907.46	-6025.72	570.18	1702678.12	14266516.99	39°17'13.2815"N	80°46'47.8393"W	6052.64	174.595	0.66	-0.66	-0.01	
12765.00	90.000	163.300	6507.34	6001.44	-6115.73	597.29	1702705.23	14266427.02	39°17'12.3913"N	80°46'47.4972"W	6144.83	174.422	0.33	0.30	0.14	
12860.00	89.940	163.540	6507.39	6096.41	-6206.78	624.40	1702732.32	14266336.01	39°17'11.4908"N	80°46'47.1553"W	6238.11	174.255	0.26	-0.06	0.25	
12954.00	90.090	163.390	6507.37	6190.38	-6296.89	651.15	1702759.07	14266245.93	39°17'10.5995"N	80°46'46.8178"W	6330.47	174.096	0.23	0.16	-0.16	
13048.00	89.880	163.690	6507.39	6284.35	-6387.04	677.79	1702785.69	14266155.82	39°17'9.7078"N	80°46'46.4819"W	6422.90	173.942	0.39	-0.22	0.32	
13143.00	90.030	163.500	6507.47	6379.31	-6478.17	704.62	1702812.51	14266064.72	39°17'8.8065"N	80°46'46.1435"W	6516.38	173.792	0.25	0.16	-0.20	
13237.00	90.000	162.920	6507.44	6473.29	-6568.16	731.77	1702839.65	14265974.77	39°17'7.9164"N	80°46'45.8010"W	6608.80	173.643	0.62	-0.03	-0.62	
13331.00	89.690	162.990	6507.70	6567.28	-6658.03	759.33	1702867.19	14265884.93	39°17'7.0274"N	80°46'45.4533"W	6701.19	173.494	0.34	-0.33	0.07	
13425.00	89.690	162.970	6508.21	6661.26	-6747.92	786.84	1702894.70	14265795.09	39°17'6.1384"N	80°46'45.1062"W	6793.64	173.349	0.02	0.00	-0.02	
13520.00	89.750	163.510	6508.67	6756.24	-6838.88	814.23	1702922.08	14265704.16	39°17'5.2387"N	80°46'44.7606"W	6887.18	173.210	0.57	0.06	0.57	

RECEIVED
Office Of Oil and Gas
OCT 08 2024
WV Department of
Environmental Protection



Actual Wellpath Report

Lyle Unit 2H AWP Proj: 15256'
Page 7 of 10



REFERENCE WELLPATH IDENTIFICATION

Operator	ANTERO RESOURCES CORPORATION	Well	Lyle Unit 2H
Field	Doddridge	API	47-017-06961-0000
Facility	Genevieve Pad	Wellbore	Lyle Unit 2H AWB
Slot	Slot B		

WELLPATH DATA (170 stations) † = interpolated, ‡ = extrapolated station

MD [ft]	Inclination [°]	Azimuth [°]	TVD [ft]	Vert Sect [ft]	North [ft]	East [ft]	Grid East [US ft]	Grid North [US ft]	Latitude	Longitude	Closure Dist [ft]	Closure Dir [°]	DLS [°/100ft]	Build Rate [°/100ft]	Turn Rate [°/100ft]	Comments
13614.00	89.910	162.270	6508.95	6850.23	-6928.72	841.89	1702949.72	14265614.36	39°17'4.3501"N	80°46'44.4117"W	6979.68	173.072	1.33	0.17	-1.32	
13709.00	90.490	162.600	6508.62	6945.22	-7019.29	870.56	1702978.38	14265523.82	39°17'3.4542"N	80°46'44.0499"W	7073.07	172.930	0.70	0.61	0.35	
13803.00	89.970	162.930	6508.24	7039.21	-7109.06	898.41	1703006.22	14265434.08	39°17'2.5662"N	80°46'43.6985"W	7165.61	172.797	0.66	-0.55	0.35	
13898.00	90.400	161.550	6507.93	7134.21	-7199.53	927.39	1703035.19	14265343.65	39°17'1.6714"N	80°46'43.3328"W	7259.02	172.660	1.52	0.45	-1.45	
13993.00	90.090	161.920	6507.53	7229.21	-7289.75	957.16	1703064.95	14265253.47	39°17'0.7790"N	80°46'42.9570"W	7352.32	172.520	0.51	-0.33	0.39	
14087.00	90.220	162.140	6507.27	7323.21	-7379.16	986.16	1703093.94	14265164.09	39°16'59.8946"N	80°46'42.5910"W	7444.76	172.388	0.27	0.14	0.23	
14182.00	89.420	161.970	6507.57	7418.21	-7469.54	1015.43	1703123.20	14265073.75	39°16'59.0006"N	80°46'42.2216"W	7538.24	172.259	0.86	-0.84	-0.18	
14276.00	89.720	161.880	6508.28	7512.20	-7558.90	1044.59	1703152.35	14264984.43	39°16'58.1167"N	80°46'41.8535"W	7630.73	172.132	0.33	0.32	-0.10	
14370.00	90.950	162.310	6507.73	7606.20	-7648.34	1073.49	1703181.23	14264895.02	39°16'57.2320"N	80°46'41.4887"W	7723.31	172.010	1.39	1.31	0.46	
14465.00	89.350	162.310	6507.48	7701.19	-7738.85	1102.36	1703210.09	14264804.55	39°16'56.3367"N	80°46'41.1245"W	7816.96	171.893	1.68	-1.68	0.00	
14559.00	89.290	162.510	6508.59	7795.19	-7828.44	1130.76	1703238.48	14264714.99	39°16'55.4505"N	80°46'40.7660"W	7909.69	171.781	0.22	-0.06	0.21	
14653.00	90.090	160.790	6509.10	7889.18	-7917.66	1160.35	1703268.06	14264625.81	39°16'54.5680"N	80°46'40.3925"W	8002.23	171.662	2.02	0.85	-1.83	
14748.00	90.920	162.190	6508.27	7984.17	-8007.74	1190.51	1703298.21	14264535.77	39°16'53.6769"N	80°46'40.0118"W	8095.75	171.544	1.71	0.87	1.47	
14842.00	89.850	161.050	6507.63	8078.16	-8096.94	1220.15	1703327.84	14264446.60	39°16'52.7946"N	80°46'39.6377"W	8188.36	171.430	1.66	-1.14	-1.21	
14937.00	90.430	162.030	6507.40	8173.15	-8187.05	1250.23	1703357.90	14264356.53	39°16'51.9032"N	80°46'39.2580"W	8281.96	171.318	1.20	0.61	1.03	
15031.00	90.090	162.100	6506.98	8267.15	-8276.48	1279.18	1703386.84	14264267.13	39°16'51.0186"N	80°46'38.8927"W	8374.75	171.214	0.37	-0.36	0.07	
15126.00	90.340	160.920	6506.62	8362.15	-8366.57	1309.30	1703416.95	14264177.07	39°16'50.1274"N	80°46'38.5123"W	8468.40	171.106	1.27	0.26	-1.24	
15221.00	90.370	161.900	6506.03	8457.14	-8456.61	1339.59	1703447.23	14264087.07	39°16'49.2368"N	80°46'38.1300"W	8562.06	170.999	1.03	0.03	1.03	
15231.00	90.430	161.760	6505.96	8467.14	-8466.11	1342.71	1703450.34	14264077.57	39°16'49.1428"N	80°46'38.0907"W	8571.93	170.988	1.52	0.60	-1.40	
15256.00‡	90.430	161.760	6505.77	8492.14	-8489.86	1350.53	1703458.16	14264053.84	39°16'48.9079"N	80°46'37.9919"W	8596.60	170.961	0.00	0.00	0.00	Projected MD at TD: 15256'

RECEIVED
 Office Of Oil and Gas
 OCT 08 2024
 WV Department of
 Environmental Protection



Actual Wellpath Report

Lyle Unit 2H AWP Proj: 15256'
Page 8 of 10



REFERENCE WELLPATH IDENTIFICATION			
Operator	ANTERO RESOURCES CORPORATION	Well	Lyle Unit 2H
Field	Doddridge	API	47-017-06961-0000
Facility	Genevieve Pad	Wellbore	Lyle Unit 2H AWB
Slot	Slot B		

HOLE & CASING SECTIONS - Ref Wellbore: Lyle Unit 2H AWB Ref Wellpath: Lyle Unit 2H AWP Proj: 15256'									
String/Diameter	Start MD [ft]	End MD [ft]	Interval [ft]	Start TVD [ft]	End TVD [ft]	Start N/S [ft]	Start E/W [ft]	End N/S [ft]	End E/W [ft]
20in Conductor	30.00	130.00	100.00	30.00	130.00	0.00	0.00	-0.61	-0.12
17.5in Open Hole	130.00	624.00	494.00	130.00	623.89	-0.61	-0.12	-10.00	-4.18
13.375in Casing Surface	30.00	604.00	574.00	30.00	603.89	0.00	0.00	-9.52	-3.87
12.375in Open Hole	624.00	3288.00	2664.00	623.89	3199.11	-10.00	-4.18	42.16	-636.79
9.625in Casing Intermediate	30.00	3258.00	3228.00	30.00	3169.91	0.00	0.00	41.66	-629.94
8.75in Open Hole	3288.00	6207.00	2919.00	3199.11	5981.42	42.16	-636.79	-94.93	-1357.38
8.5in Open Hole	6207.00	15256.00	9049.00	5981.42	6505.77	-94.93	-1357.38	-8489.86	1350.53
5.5in Casing Production	30.00	15236.00	15206.00	30.00	6505.92	0.00	0.00	-8470.86	1344.27

RECEIVED
 Office Of Oil and Gas
 OCT 08 2024
 WV Department of
 Environmental Protection



Actual Wellpath Report

Lyle Unit 2H AWP Proj: 15256'
Page 9 of 10



REFERENCE WELLPATH IDENTIFICATION

Operator	ANTERO RESOURCES CORPORATION	Well	Lyle Unit 2H
Field	Doddridge	API	47-017-06961-0000
Facility	Genevieve Pad	Wellbore	Lyle Unit 2H AWB
Slot	Slot B		

TARGETS

Name	TVD [ft]	North [ft]	East [ft]	Grid East [US ft]	Grid North [US ft]	Latitude	Longitude	Shape
Lyle Unit 2H BHL Rev-3	6429.36	-8490.32	1344.52	1703452.16	14264053.38	39°16'48.9035"N	80°46'38.0683"W	point
Lyle Unit 2H POE Rev-3	6533.00	-704.40	-1182.57	1700926.07	14271836.20	39°18'5.9174"N	80°47'9.9707"W	point
Lyle Unit 2H POE Rev-1	6536.00	-471.82	-1258.06	1700850.61	14272068.69	39°18'8.2179"N	80°47'10.9240"W	point
Lyle Unit 2H LP Rev-3	6555.00	-882.98	-1124.61	1700984.01	14271657.69	39°18'4.1510"N	80°47'9.2388"W	point
Lyle Unit 2H 50' L/R Hard Line	6750.00	-4481.07	43.23	1702151.39	14268061.03	39°17'28.5611"N	80°46'54.4936"W	rectangle
2D Rectangle 8430.29 x 100.								

WELLPATH COMPOSITION - Ref Wellbore: Lyle Unit 2H AWB Ref Wellpath: Lyle Unit 2H AWP Proj: 15256'

Start MD [ft]	End MD [ft]	Positional Uncertainty Model	Log Name/Comment	Wellbore	Survey Date
30.00	552.00	Gyrodata 2015 - GC+WIR+DPIPE	01 Gyrodata MS Gyro <17-1/2"> (100'-552')	Lyle Unit 2H AWB	2/25/2024
552.00	3206.00	BH NaviTrak (2019) (Axial Corr+HRGM)	02 APS EM <12-3/8"> (552')(676'-3206')	Lyle Unit 2H AWB	2/25/2024
3206.00	6129.00	BH NaviTrak (2019) (Axial Corr+HRGM)	03 APS EM <8-3/4"> (3206')(3293'-6129')	Lyle Unit 2H AWB	4/1/2024
6129.00	15256.00	BH AutoTrak Curve/eXpress (2019) (HRGM, Short spacing)	04 BH AT Curve <8-1/2"> (6129')(6168'-15231')	Lyle Unit 2H AWB	4/1/2024

RECEIVED
Office Of Oil and Gas
OCT 08 2024
WV Department of
Environmental Protection



Actual Wellpath Report

Lyle Unit 2H AWP Proj: 15256'

Page 10 of 10



REFERENCE WELLPATH IDENTIFICATION

Operator	ANTERO RESOURCES CORPORATION	Well	Lyle Unit 2H
Field	Doddridge	API	47-017-06961-0000
Facility	Genevieve Pad	Wellbore	Lyle Unit 2H AWB
Slot	Slot B		

COMMENTS

Wellpath general comments

API: 47-017-06961-0000
BH Job #: 112150804
Rig: H&P 519
Duration: 4/3/2024-4/5/2024
Gyrodatta MS Gyro <17-1/2"> (100'-552')
APS EM <12-3/8"> (552')(676'-3206')
APS EM <8-3/4"> (3206')(3293'-6129')
BH AT Curve <8-1/2"> (6129')(6168'-15231')
Sycamore: 6490' MD
Middlesex: 6672' MD
Burkett: 6888' MD
Tully: 6951' MD
Marcellus POE: 7095' MD
Projected MD at TD: 15256'

RECEIVED
Office Of Oil and Gas

OCT 08 2024

WV Department of
Environmental Protection