



west virginia department of environmental protection

Office of Oil and Gas
601 57th Street, S.E.
Charleston, WV 25304
(304) 926-0450
fax: (304) 926-0452

Harold D. Ward, Cabinet Secretary
www.dep.wv.gov

Tuesday, August 20, 2024
PERMIT MODIFICATION APPROVAL
Horizontal 6A / New Drill

HG ENERGY II APPALACHIA, LLC
5260 DUPONT ROAD

PARKERSBURG, WV 26101

Re: Permit Modification Approval for Barnes 1223 S-12H
47-017-06969-00-00

Lateral Extension

HG ENERGY II APPALACHIA, LLC

The Office of Oil and Gas has reviewed the attached permit modification for the above referenced permit. The attached modification has been approved and well work may begin. Please be reminded that the oil and gas inspector is to be notified twenty-four (24) hours before permitted well work is commenced.

If there are any questions, please feel free to contact me at (304) 926- 0450.

James A. Martin
Chief

Operator's Well Number: Barnes 1223 S-12H
Farm Name: Marilyn Barnes, et al
U.S. WELL NUMBER: 47-017-06969-00-00
Horizontal 6A New Drill
Date Modification Issued: 08/20/2024

Promoting a healthy environment.

08/23/2024

STATE OF WEST VIRGINIA
DEPARTMENT OF ENVIRONMENTAL PROTECTION, OFFICE OF OIL AND GAS
WELL WORK PERMIT APPLICATION

1) Well Operator: HG Energy II Appalachia, L.P. 494519932 Doddridge Cove Vadis 7.5'
Operator ID County District Quadrangle

2) Operator's Well Number: Barnes 1223 S-12H Well Pad Name: Barnes 1223

3) Farm Name/Surface Owner: Barnes ✓ Public Road Access: SLS 29

4) Elevation, current ground: 1329' Elevation, proposed post-construction: 1335'

5) Well Type (a) Gas x Oil _____ Underground Storage _____
Other _____

(b) If Gas Shallow x Deep _____
Horizontal x

6) Existing Pad: Yes or No No

7) Proposed Target Formation(s), Depth(s), Anticipated Thickness and Expected Pressure(s):
Marcellus at 7129' to 7182' and 53' in thickness. Anticipated pressure at 4314#. ✓

8) Proposed Total Vertical Depth: 7180' ✓

9) Formation at Total Vertical Depth: Marcellus ✓

RECEIVED
Office of Oil and Gas

10) Proposed Total Measured Depth: 31,038' ✓

AUG 9 2024

11) Proposed Horizontal Leg Length: 22,548'

12) Approximate Fresh Water Strata Depths: 150', 220', 339' ✓

WV Department of
Environmental Protection

13) Method to Determine Fresh Water Depths: Nearest offset well data, (47-017-02490, 47-017-02542, 2780)

14) Approximate Saltwater Depths: NA

15) Approximate Coal Seam Depths: 153'-158', 428'-438' (Surface Casing is being extended to cover the coal)

16) Approximate Depth to Possible Void (coal mine, karst, other): None

17) Does Proposed well location contain coal seams directly overlying or adjacent to an active mine? Yes _____ No X

(a) If Yes, provide Mine Info: Name: _____
Depth: _____
Seam: _____
Owner: _____

CK# 46177
\$ 7500⁰⁰

18)

CASING AND TUBING PROGRAM

TYPE	Size (in)	New or Used	Grade	Weight per ft. (lb/ft)	FOOTAGE: For Drilling (ft)	INTERVALS: Left in Well (ft)	CEMENT: Fill-up (Cu. Ft.)/CTS
Conductor	20"	New	LS	94	120'	120'	Drilled In
Fresh Water	13.375"	NEW	J-55 BTC	54.5	1300'	1300' ✓	40% excess, yield = 1.18, CTS ✓
Coal							
Intermediate	9 5/8"	NEW	N-80 BTC	40	6784'	6784' ✓	Lead - 40% excess, Tail - 0% Excess
Production	5 1/2"	NEW	P-110 HP	23	31038'	31038' ✓	Lead - Yield = 1.19, Tail - yield = 1.94
Tubing							
Liners							

Kenneth Greynolds Digitally signed by: Kenneth Greynolds
 DN: CN = Kenneth Greynolds email = Kenneth.L.Greynolds@wv.gov C = AD O = WVDEP OU = Oil and Gas
 Date: 2024.08.02 09:32:23 -04'07'

TYPE	Size (in)	Wellbore Diameter (in)	Wall Thickness (in)	Burst Pressure (psi)	Anticipated Max. Internal Pressure (psi)	Cement Type	Cement Yield (cu. ft./k)
Conductor	20"	20"	.438				Drilled In
Fresh Water	13 3/8"	17.5"	.380	2730	1200	Type 1, Class A	30 % excess yield = 1.20, CTS
Coal							
Intermediate	9 5/8"	12 1/4"	.395	5750		Type 1/Class A	40% excess yield = 0% Excess Lead
Production	5 1/2"	8 1/2"	.415	16240	12500 ✓	Type 1/Class A	20% excess yield = 1.19, tail yield 1.94
Tubing							
Liners							

PACKERS

Kind:				RECEIVED Office of Oil and Gas AUG 9 2024 WV Department of Environmental Protection
Sizes:				
Depths Set:				

19) Describe proposed well work, including the drilling and plugging back of any pilot hole:

Drill the vertical depth to the Marcellus at an estimated total vertical depth of approximately 7180'. Drill horizontal leg to an estimated 22,548' lateral length, 31,038' TMD. Hydraulically fracture, stimulate and be capable of producing from the Marcellus Formation. Should we encounter an unanticipated void in the coal, we will install a minimum of 20' of casing below the void but not more than 100' below the void, set a basket and grout to surface.

20) Describe fracturing/stimulating methods in detail, including anticipated max pressure and max rate:

The stimulation will be completed with multiple stages divided over the lateral length of the well. Stage spacing is dependent upon engineering design. Slickwater fracturing technique will be utilized on each stage using sand, water, and chemicals. Maximum pressure not to exceed 12,500 psi.

21) Total Area to be disturbed, including roads, stockpile area, pits, etc., (acres): 51.82 acres

22) Area to be disturbed for well pad only, less access road (acres): 6.11 acres

23) Describe centralizer placement for each casing string:

No centralizers will be used with conductor casing.
Freshwater - Bow Spring on every other joint.
Intermediate - Bow Spring on first 2 joints then every third joint to 100' from surface.
Production - Run 1 spiral centralizer every 5 joints from the top of the curve to surface. Run 1 spiral centralizer every 3 joints from the 1st 5.5' long joint to the top of the curve.

24) Describe all cement additives associated with each cement type:

Conductor - N/A, Casing to be drilled in w/ Dual Rotary Rig.
Fresh Water - "15.6 ppg Class A Neat 94#s40% Excess/Yield=1.18 / CTS"
Intermediate - "Lead: 15.4 ppg PNE-1 + 2.5% bwoc CaCl40% Excess / Tail: 15.9 ppg PNE-1 + 2.5% bwoc CaCl zero% Excess. CTS"
Production - "Lead: 14.5 ppg POZ.PNE-1 + 0.3% bwoc R3 + 1% bwoc EC1 + 0.75 gal/sk FP13L + 0.3% bwoc MPA170Tail: 14.8 ppg PNE-1 + 0.35% bwoc R3 + 0.75 gal/sk FP13L + 50% bwoc ASCA1 + 0.5% bwoc MPA17020% Excess/Lead Yield=1.19Tail Yield=1.94CTS"

25) Proposed borehole conditioning procedures:

Conductor - Ensure the hole is clean at TD.
Fresh Water - Once casing is at setting depth, circulate a minimum of one hole volume with Fresh Water prior to pumping cement.
Intermediate - Once casing is at setting depth. Circulate and condition mud at TD. Circulate a minimum of one hole volume prior to pumping cement.
Production - Once on bottom/TD with casing, circulate at max allowable pump rate for at least 2x bottoms up, or until returns and pump pressures indicate the hole is clean. Circulate a minimum of one hole volume prior to pumping cement.

*Note: Attach additional sheets as needed.



1223 S-12H
Marcellus Shale Horizontal
Doddridge County, WV

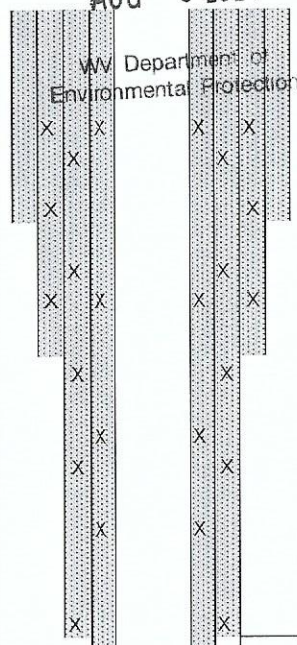
1223 S-12H SHL 14204642.59N 1720606.87E

Ground Elevation 1329' 1223 S-12H LP 14203992.85N 1723370.08E

Office of Oil and Gas 160.574° 1223 S-12H BHL 14182737.55N 1730866.17E

WELLBORE DIAGRAM
AUG 9 2024

WV Department of Environmental Protection



HOLE	CASING	GEOLOGY	TOP	BASE	MUD	CEMENT	CENTRALIZERS	CONDITIONING	COMMENTS
20"	20" 94# LS	Conductor	0	120	AIR	N/A, Casing to be drilled in w/ Dual Rotary Rig	N/A	Ensure the hole is clean at TD.	Surface casing = 0.438" wall thickness
		Coal	580		AIR	15.6 ppg Class A Neat 94#/sk 40% Excess Yield=1.18 / CTS	Bow Spring on every other joint	Once casing is at setting depth, Circulate and condition at TD. Circulate a minimum of one hole volume prior to pumping cement.	Intermediate casing = 0.380" wall thickness Burst=2730 psi
Coal	610								
Coal	900								
17.5"	13-3/8" 54.5# J-55 BTC	Fresh Water Protection	0	1300	AIR / KCL - Salt Polymer	Lead: 15.4 ppg PNE-1 + 2.5% bwoc CaCl 40% Excess / Tail: 15.9 ppg PNE-1 + 2.5% bwoc CaCl zero% Excess. CTS	Bow Spring on first 2 joints then every third joint to 100' form surface	Once casing is at setting depth, Circulate and condition mud at TD. Circulate a minimum of one hole volume prior to pumping cement.	Intermediate casing = 0.395" wall thickness Burst=5750 psi
		Little Lime/Big Lime	2290/2345	2305/2401					
Big Injun/Gantz	2401/2755	2495/2785							
50 Foot/Gordon	2861/3042	2903/3122							
Fifth	3213	3263							
Bayard	3286	3311							
Warren/Speechley	3594/3807	3629/3842							
12.25"	9-5/8" 40# N-80 BTC	Intermediate	0	TVD: 6273' MD: 6784' Inc.37 deg.	AIR / 9.0ppg SOBM	Lead: 14.5 ppg POZ:PNE-1 + 0.3% bwoc R3 + 1% bwoc EC1 + 0.75 gal/sk FP13L + 0.3% bwoc MPA170 Tail: 14.8 ppg PNE-1 + 0.35% bwoc R3 + 0.75 gal/sk FP13L + 50% bwoc ASCA1 + 0.5% bwoc MPA170 20% Excess Lead Yield=1.19 Tail Yield=1.94 CTS	Run 1 spiral centralizer every 5 joints from the top of the curve to surface.	Once on bottom/TD with casing, circulate at max allowable pump rate for at least 2x bottoms up, or until returns and pump pressures indicate the hole is clean. Circulate a minimum of one hole volume prior to pumping cement.	Production casing = 0.415" wall thickness Burst=16240 psi Note:Actual centralizer schedules may be changed due to hole conditions
		Rhinestreet	6431	6719					
Cashaqua	6719	6864							
Middlesex	6864	6943							
West River	6943	7012							
Burkett	7012	7053							
Tully Limestone	7053	7078							
Hamilton	7078	7129							
Marcellus	7129	7182							
8.5" Curve	5-1/2" 23# P-110 HP TXP / W461	TMD / TVD (Production)	31038	7180					
		Onondaga	7182						
8.5" Lateral					11.5ppg-12.5ppg SOBM				

LP @ 7180' TVD / 8490' MD

8.5" Hole - Cemented Long String
5-1/2" 23# P-110 HP TXP / W461

+/-22548' ft Lateral

TD @ +/-7180' TVD
+/-31038' MD

X=centralizers

**EXISTING WELLS LOCATED WITHIN THE AREA OF REVIEW FOR:
BARNES 1223 SOUTH UNIT AND PROPOSED WELLS S-7H, S-8H, S-9H, S-10H, S-11H, & S-12H**

CT	API	COUNTY	FARM	OPERATOR NAME	FORMATION NAME	WELL TYPE	TVD	STATUS	LATITUDE	LONGITUDE
1	4701700143	Doddridge	Chapman & Spray	McCall Drilling Co.	Price Fm & equivs	Dry w/ Oil Show	2375	PLUGGED	39.106734	-80.709358
2	4701701878	Doddridge	S L Gray	Ross & Wharton Gas Co., Inc.	Gantz	Oil and Gas	2504	PLUGGED	39.098560	-80.722490
3	4701702287	Doddridge	S L Gray	Charity Gas Inc.	Gordon	Gas	2440	ACTIVE	39.101835	-80.721236
4	4701702473	Doddridge	Geo Adrian	Deran Resources, Inc.	Price Fm & equivs	Gas	2224	ACTIVE	39.106809	-80.724153
5	4701702490	Doddridge	Lelia B Cole	Deran Resources, Inc.	Big Injun (Grnbr)	not available	-	ACTIVE	39.108889	-80.720538
6	4701702520	Doddridge	Lelia B Cole	Deran Resources, Inc.	Undf PRICE blw INJN	Gas	2515	ACTIVE	39.113444	-80.718942
7	4701702550	Doddridge	M D Bode	Daniel Farley	Undf PRICE blw INJN	Gas	2051	PLUGGED	39.100243	-80.718780
8	4701702591	Doddridge	M D Bode	Daniel Farley	Undf PRICE blw INJN	Gas	2097	PLUGGED	39.102376	-80.715915
9	4701702742	Doddridge	George Adrian	Deran Resources, Inc.	Big Injun (Grnbr)	Gas	2423	ACTIVE	39.112375	-80.724312
10	4701702764	Doddridge	R Buntun	Daniel Farley	Big Injun (Grnbr)	Dry	2290	PLUGGED	39.103197	-80.719297
11	4701703160	Doddridge	Franklin Rastle	Ross & Wharton Gas Co., Inc.	Big Injun (Grnbr)	Gas	2100	ABANDONED	39.107465	-80.707687
12	4701703161	Doddridge	Franklin Rastle	Ross & Wharton Gas Co., Inc.	Big Injun (Grnbr)	Gas	2505	ACTIVE	39.107386	-80.715685
13	4701703162	Doddridge	F Rastle et ux	Beta-Helix Energy, LLC	Big Injun (Grnbr)	Gas	2075	ACTIVE	39.103928	-80.710206
14	4701703168	Doddridge	Daniel Persiani	Beta-Helix Energy, LLC	Big Injun (Grnbr)	Gas	2190	ACTIVE	39.103010	-80.704679
15	4701703170	Doddridge	William Tatro	Beta-Helix Energy, LLC	Big Injun (Grnbr)	Gas	2215	ACTIVE	39.099648	-80.706269
16	4701703172	Doddridge	Franklin Rastle	Berry Energy, LLC	Big Injun (Grnbr)	Gas	2222	ACTIVE	39.109548	-80.713848
17	4701703187	Doddridge	William Tatro	Beta-Helix Energy, LLC	Big Injun (Grnbr)	Gas	2222	ACTIVE	39.100128	-80.702353
18	4701703228	Doddridge	Bryan & Mary Lowther	Deran Resources, Inc.	Big Injun (Grnbr)	Gas	2214	ACTIVE	39.109547	-80.724710
19	4701704796	Doddridge	Henry G & Sylvia Rastle	Eastern Gas Transmission & Storage, Inc.	not available	not available	-	PLUGGED	39.093184	-80.707802
20	4701731276	Doddridge	John Gamps/F M Schmidt	Consolidated Gas Supply Corp.	Hampshire Grp	Oil and Gas	2200	PLUGGED	39.094105	-80.703157
21	4704100024	Lewis	D D Chapman	Waco Oil & Gas Co., Inc.	Hampshire Grp	Gas	2181	ACTIVE	39.063680	-80.687721
22	4704100051	Lewis	Laura Alfred & Griggs	Eastern Gas Transmission & Storage, Inc.	Blue Monday	Oil and Gas	1881	PLUGGED	39.051493	-80.698667
23	4704100052	Lewis	Alfred & Griggs	Diversified Production, LLC	Undf PRICE blw INJN	Oil and Gas	1960	ACTIVE	39.052644	-80.696308
24	4704100055	Lewis	Lydia Starcher	Eastern Gas Transmission & Storage, Inc.	Gantz	Oil and Gas	2180	PLUGGED	39.063394	-80.692715
25	4704100060	Lewis	M H Piercy	Eastern Gas Transmission & Storage, Inc.	Big Injun (Grnbr)	Gas	2243	PLUGGED	39.071241	-80.687882
26	4704100188	Lewis	Reason Davisson	Appalachian Land & Development Co.	Price Fm & equivs	Oil w/ Gas Show	1967	ABANDONED	39.059983	-80.683795
27	4704100424	Lewis	D D Chapman	Waco Oil & Gas Co., Inc.	Big Injun (Grnbr)	Oil and Gas	1960	ACTIVE	39.061670	-80.687321
28	4704100550	Lewis	O Ireland	Waco Oil & Gas Co., Inc.	Price Fm & equivs	Oil	1992	ACTIVE	39.059494	-80.697737
29	4704100694	Lewis	Isaac Tyson	M and M Drilling	Price Fm & equivs	Oil and Gas	1730	PLUGGED	39.051862	-80.685008
30	4704100845	Lewis	Tyson-Reese Consol	Waco Oil & Gas Co., Inc.	Price Fm & equivs	Oil and Gas	1933	ACTIVE	39.056159	-80.687210
31	4704100870	Lewis	Joseph Tyson	Eastern Gas Transmission & Storage, Inc.	Price Fm & equivs	Oil and Gas	1898	PLUGGED	39.054385	-80.682225
32	4704100909	Lewis	W Richard Starcher	Term Energy Corporation	Price Fm & equivs	Oil and Gas	1812	ABANDONED	39.062972	-80.701148
33	4704100948	Lewis	Jason Bailey	Waco Oil & Gas Co., Inc.	Price Fm & equivs	Gas	1996	ACTIVE	39.057239	-80.684539

34	4704100963	Lewis	Isaac Tyson	P&C Oil & Gas, Inc.	Squaw	Oil and Gas	1946	ABANDONED	39.052805	-80.687448
35	4704100990	Lewis	D D Chapman	B & B Oil & Gas Co., Inc.	Price Fm & equivs	Gas	2010	ABANDONED	39.064951	-80.698048
36	4704100999	Lewis	Alfred & Griggs	Diversified Production, LLC	Price Fm & equivs	Oil and Gas	1979	ACTIVE	39.054514	-80.694197
37	4704101017	Lewis	Marion Tyson	Waco Oil & Gas Co., Inc.	Price Fm & equivs	Oil and Gas	1989	ACTIVE	39.057352	-80.687268
38	4704101059	Lewis	Alfred & Griggs	Diversified Production, LLC	Price Fm & equivs	Oil and Gas	1938	ACTIVE	39.057717	-80.693089
39	4704101062	Lewis	G W McMillan	McMillan Oil & Gas	not available	not available	-	NEVER DRILLED	39.061669	-80.705551
40	4704101073	Lewis	D D Chapman	R&R Oil & Gas, LLC	Price Fm & equivs	Oil and Gas	2035	ACTIVE	39.067239	-80.685979
41	4704101075	Lewis	Offa Keesucker	Jesse & Merle Shackelford	Price Fm & equivs	Gas	1978	ACTIVE	39.060219	-80.689181
42	4704101094	Lewis	D D Chapman	Term Energy Corporation	Price Fm & equivs	Oil and Gas	2100	PLUGGED	39.058619	-80.686711
43	4704101144	Lewis	A Alfred	Waco Oil & Gas Co., Inc.	Price Fm & equivs	Oil w/ Gas Show	1735	ACTIVE	39.054089	-80.701039
44	4704101159	Lewis	O W Ireland	Waco Oil & Gas Co., Inc.	Price Fm & equivs	Oil w/ Gas Show	1785	ACTIVE	39.055585	-80.699670
45	4704101162	Lewis	O W Ireland	Waco Oil & Gas Co., Inc.	Big Injun (Grnbr)	Oil w/ Gas Show	1886	ACTIVE	39.056649	-80.698014
46	4704101167	Lewis	O W Ireland	Stallworth Oil and Gas, Inc.	not available	not available	-	NEVER DRILLED	39.057319	-80.695504
47	4704101168	Lewis	O W Ireland	Waco Oil & Gas Co., Inc.	Price Fm & equivs	Oil w/ Gas Show	2176	ACTIVE	39.059202	-80.695201
48	4704101169	Lewis	A L Griggs	R&R Oil & Gas, LLC	Price Fm & equivs	Oil and Gas	1798	ACTIVE	39.055659	-80.701995
49	4704101172	Lewis	Griggs & Alfred	Diversified Production, LLC	Big Injun (Grnbr)	Oil w/ Gas Show	1925	ACTIVE	39.051147	-80.700745
50	4704101173	Lewis	Griggs & Alfred	Diversified Production, LLC	Big Lime	Oil w/ Gas Show	1904	ACTIVE	39.057287	-80.698779
51	4704101185	Lewis	A L Griggs	Waco Oil & Gas Co., Inc.	Price Fm & equivs	Oil w/ Gas Show	1885	ACTIVE	39.052644	-80.700973
52	4704101186	Lewis	Griggs & Alfred	Diversified Production, LLC	Big Injun (Grnbr)	Oil w/ Gas Show	1855	ACTIVE	39.054435	-80.699097
53	4704101201	Lewis	Griggs & Alfred	Diversified Production, LLC	Big Injun (Grnbr)	Oil	2141	ACTIVE	39.058339	-80.690678
54	4704101223	Lewis	Alfred & Griggs	Diversified Production, LLC	Big Injun (Grnbr)	Oil w/ Gas Show	2083	ACTIVE	39.050600	-80.698366
55	4704101237	Lewis	Alfred & Griggs	Diversified Production, LLC	Big Injun (Grnbr)	Oil and Gas	2140	ACTIVE	39.056102	-80.692177
56	4704101240	Lewis	Alfred & Griggs	Diversified Production, LLC	Big Injun (Grnbr)	Oil and Gas	1938	ACTIVE	39.052388	-80.698526
57	4704101255	Lewis	W D Chapman	Petroleum Promotions	Undf PRICE blw INJN	Oil and Gas	2150	PLUGGED	39.065730	-80.686020
58	4704101256	Lewis	N G Douglas	Petroleum Promotions	Undf PRICE blw INJN	Oil and Gas	2150	PLUGGED	39.064280	-80.683229
59	4704101326	Lewis	Alfred & Griggs	Diversified Production, LLC	Undf PRICE blw INJN	Oil w/ Gas Show	1951	ACTIVE	39.049200	-80.700252
60	4704101331	Lewis	L Starcher	Waco Oil & Gas Co., Inc.	Big Injun (Grnbr)	Gas	2313	ACTIVE	39.060219	-80.694305
61	4704101332	Lewis	L Starcher	Waco Oil & Gas Co., Inc.	Big Injun (Grnbr)	Oil and Gas	1959	ACTIVE	39.062000	-80.691710
62	4704101334	Lewis	D D Chapman	Waco Oil & Gas Co., Inc.	not available	not available	-	ACTIVE	39.060147	-80.689860
63	4704101335	Lewis	D D Chapman	Waco Oil & Gas Co., Inc.	Big Injun (Grnbr)	Oil	2138	ACTIVE	39.062699	-80.685029
64	4704101349	Lewis	D D Chapman	Waco Oil & Gas Co., Inc.	Big Injun (Grnbr)	Oil	2193	ACTIVE	39.059514	-80.688647
65	4704101352	Lewis	D D Chapman	Waco Oil & Gas Co., Inc.	not available	not available	-	ACTIVE	39.061891	-80.689388
66	4704101369	Lewis	C Roney	P&C Oil & Gas, Inc.	Undf PRICE blw INJN	not available	1950	ABANDONED	39.051189	-80.688952
67	4704101436	Lewis	D Rinehart Heirs	Wolf Run Oil & Gas	Fifth	Dry	2752	PLUGGED	39.087473	-80.707426
68	4704101513	Lewis	C A Bailey Hrs	Steve Duckworth Well Service	not available	not available	-	PLUGGED	39.066097	-80.701153
69	4704101952	Lewis	A L Griggs	Diversified Production, LLC	Price Fm & equivs	Oil w/ Gas Show	1921	ACTIVE	39.054778	-80.696938
70	4704102043	Lewis	S H Lowther	Eastern Gas Transmission & Storage, Inc.	Gantz	Storage	2302	ACTIVE	39.087218	-80.710800

71	4704102046	Lewis	M E Hall	Eastern Gas Transmission & Storage, Inc.	Gantz	Storage	2473	ACTIVE	39.084351	-80.712136
72	4704102060	Lewis	M E Hall	Eastern Gas Transmission & Storage, Inc.	Gantz	Storage	2267	ACTIVE	39.082421	-80.708062
73	4704102061	Lewis	M E Hall	Eastern Gas Transmission & Storage, Inc.	Gantz	Storage	2401	PLUGGED	39.079571	-80.712390
74	4704102063	Lewis	John Rastle	Eastern Gas Transmission & Storage, Inc.	Gantz	Storage	2173	ACTIVE	39.087568	-80.704427
75	4704102072	Lewis	John Rastle	Eastern Gas Transmission & Storage, Inc.	Gantz	Storage	2433	PLUGGED	39.086803	-80.702588
76	4704102078	Lewis	Frank Rastle	Eastern Gas Transmission & Storage, Inc.	Gantz	Storage	2431	PLUGGED	39.077130	-80.710161
77	4704102822	Lewis	Charles Fisher	Eastern Gas Transmission & Storage, Inc.	Berea Ss	Oil	2186	ACTIVE	39.089559	-80.706125
78	4704102823	Lewis	Mary Albers	Eastern Gas Transmission & Storage, Inc.	not available	not available	-	PLUGGED	39.091009	-80.699054
79	4704102824	Lewis	John Rastle	Eastern Gas Transmission & Storage, Inc.	Hampshire Grp	Oil w/ Gas Show	2703	PLUGGED	39.089838	-80.700392
80	4704102825	Lewis	John Rastle	Eastern Gas Transmission & Storage, Inc.	not available	not available	-	PLUGGED	39.087818	-80.695145
81	4704102828	Lewis	Conrad Rastle	Eastern Gas Transmission & Storage, Inc.	not available	Storage	-	ACTIVE	39.089365	-80.696947
82	4704102829	Lewis	Conrad Rastle	Eastern Gas Transmission & Storage, Inc.	not available	not available	-	PLUGGED	39.091299	-80.696449
83	4704102830	Lewis	Conrad Rastle	Eastern Gas Transmission & Storage, Inc.	not available	not available	-	PLUGGED	39.088770	-80.698862
84	4704102848	Lewis	Mary E Hall	Eastern Gas Transmission & Storage, Inc.	not available	not available	-	PLUGGED	39.081393	-80.711428
85	4704102910	Lewis	F Rastle	Eastern Gas Transmission & Storage, Inc.	Hampshire Grp	Observation	2691	ACTIVE	39.074858	-80.703868
86	4704103088	Lewis	M & D L Rastle	Eastern Gas Transmission & Storage, Inc.	Gantz	Storage	2574	ACTIVE	39.083306	-80.700087
87	4704103112	Lewis	Marie Rastle	Consolidated Gas Supply Corp.	Hampshire Grp	Oil	2473	PLUGGED	39.077332	-80.712063
88	4704103113	Lewis	M&C Rastle	Eastern Gas Transmission & Storage, Inc.	Gantz	Storage	2531	ACTIVE	39.077612	-80.712174
89	4704103275	Lewis	Guy Simmons	Foster Mining Co.	Big Injun (Grnbr)	Gas	2238	ABANDONED	39.083346	-80.715655
90	4704103289	Lewis	Guy Simmons Jr	Eastern Gas Transmission & Storage, Inc.	not available	not available	2488	PLUGGED	39.077912	-80.710016
91	4704103290	Lewis	Guy Simmons Jr	Eastern Gas Transmission & Storage, Inc.	not available	not available	2200	PLUGGED	39.083423	-80.701283
92	4704103291	Lewis	Guy Simmons Jr	Eastern Gas Transmission & Storage, Inc.	not available	not available	2206	PLUGGED	39.081980	-80.705003
93	4704103300	Lewis	Henry Rastle	Eastern Gas Transmission & Storage, Inc.	Gantz	Oil	2440	PLUGGED	39.089253	-80.709233
94	4704103301	Lewis	Guy Simmons	Eastern Gas Transmission & Storage, Inc.	not available	not available	3906	PLUGGED	39.080970	-80.705265
95	4704103572	Lewis	Guy Simmons	Consolidated Gas Transmission Corp.	not available	not available	-	PLUGGED	39.085933	-80.715785
96	4704104775	Lewis	Yvonne Foster/E Rastle et al	Eastern Gas Transmission & Storage, Inc.	not available	not available	-	PLUGGED	39.088230	-80.702534
97	4704130217	Lewis	Maud Faupel	South Penn Oil (S. Penn Nat. Gas)	Hampshire Grp	Oil	2174	PLUGGED	39.081972	-80.705190
98	4704130218	Lewis	Harvey Faupel	South Penn Oil (S. Penn Nat. Gas)	Hampshire Grp	Oil	2346	PLUGGED	39.083133	-80.702958
99	4704130276	Lewis	M E Hall	Hope Natural Gas Company	Hampshire Grp	Oil	2431	PLUGGED	39.077622	-80.709458
100	4704130299	Lewis	Conrad Rastle	Hope Natural Gas Company	Hampshire Grp	Gas	2191	PLUGGED	39.090184	-80.695332
101	4704130301	Lewis	John Rastle	Hope Natural Gas Company	Hampshire Grp	Oil and Gas	2306	PLUGGED	39.086268	-80.696261
102	4704130334	Lewis	A J Spray	Carnegie Natural Gas Co.	Undf PRICE blw INJN	Gas	2170	PLUGGED	39.071676	-80.708342
103	4704130442	Lewis	Reason C Davisson	UNKNOWN	Hampshire Grp	Oil	2625	PLUGGED	39.056304	-80.679693
104	4704130811	Lewis	John Rastle	Consolidated Gas Supply Corp.	not available	not available	2196	PLUGGED	39.086203	-80.705508
105	4704130812	Lewis	M E Hall	Consolidated Gas Supply Corp.	not available	not available	2148	PLUGGED	39.103169	-80.710411
106	4704130813	Lewis	John Rastle	Consolidated Gas Supply Corp.	not available	not available	2454	PLUGGED	39.087458	-80.700813
107	4704130814	Lewis	Charles Fisher	Consolidated Gas Supply Corp.	not available	not available	2358	PLUGGED	39.087673	-80.707054

108	4704130815	Lewis	M E Hall	Consolidated Gas Supply Corp.	not available	not available	2154	PLUGGED	39.084403	-80.705487
109	4704130816	Lewis	M E Hall	Consolidated Gas Supply Corp.	not available	not available	2334	PLUGGED	39.084501	-80.709625
110	4704130817	Lewis	M E Hall	Consolidated Gas Supply Corp.	not available	not available	2390	PLUGGED	39.078347	-80.709840
111	4704130818	Lewis	M E Hall	Consolidated Gas Supply Corp.	not available	not available	2138	PLUGGED	39.078722	-80.707389
112	4704130819	Lewis	M E Hall	Consolidated Gas Supply Corp.	not available	not available	2433	PLUGGED	39.082753	-80.713750
113	4704130820	Lewis	Mary Albers	Consolidated Gas Supply Corp.	not available	not available	2426	PLUGGED	39.090147	-80.703177
114	4704130822	Lewis	Sylvester H Lowther	Consolidated Gas Supply Corp.	not available	not available	2271	PLUGGED	39.086055	-80.708045
WELLS ADDED 9/7/23 ALONG WESTERN EDGE OF THE UNIT										
115	4701700233	Doddridge	J Porter Woofter	ALAMCO, Inc.	Gantz	Dry	2350	PLUGGED	39.105040	-80.726617
116	4701700809	Doddridge	J S Bailey	Deran Resources, Inc.	Gantz	Gas w/ Oil Show	2350	ACTIVE	39.111662	-80.728937
117	4701702288	Doddridge	S L Gray	Charity Gas, Inc.	Alexander	Gas	5405	ACTIVE	39.103582	-80.725182
118	4704100029	Lewis	Griggs & Alfred	Diversified Production, LLC	Big Injun (Grnbr)	Oil	2103	ACTIVE	39.047893	-80.699406
119	4704100968	Lewis	W O Ireland	Waco Oil & Gas Co., Inc.	Price Fm & equivs	Oil	1822	ACTIVE	39.056459	-80.703947
120	4704102030	Lewis	W O Ireland	Waco Oil & Gas Co., Inc.	Big Injun (Grnbr)	Oil	1764	ACTIVE	39.053998	-80.702532
121	4704130801	Lewis	W H Frost	Consolidated Gas Supply Corp.	Undf PRICE blw INJN	Gas	1940	PLUGGED	39.046877	-80.697917
WELLS ADDED 3/25/24 AT SOUTH FOR EXTENDED LATERALS										
122	4704100029	Lewis	Griggs & Alfred	Diversified Production, LLC	Big Injun (Grnbr)	Oil	2103	ACTIVE	39.047893	-80.699406
123	4704102425	Lewis	Albert Crislip	Diversified Production, LLC	not available	not available	-	ACTIVE	39.047458	-80.692524
124	4704130801	Lewis	W H Frost	Consolidated Gas Supply Corp.	Undf PRICE blw INJN	Gas	1940	PLUGGED	39.046877	-80.697917

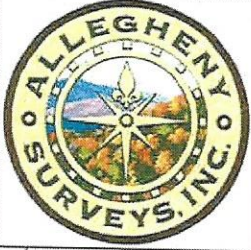
SOURCE: WVGES DATASET (2020) and WVDEP WEBSITE AND FIELD SURVEYS

YELLOW DENOTES WELL WITH TVD > 4,500'

GREEN DENOTES SURVEYED WELLS

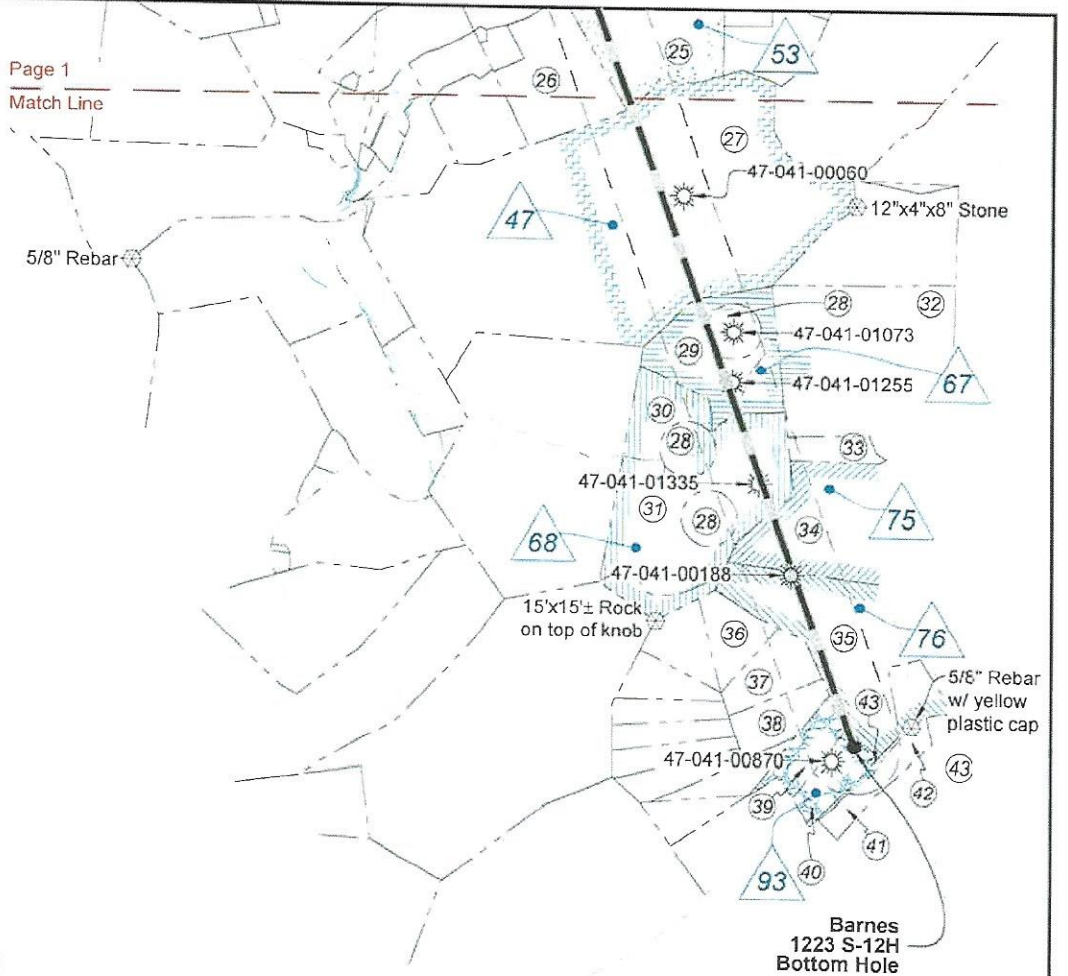
UPDATED 3/25/2024

RECEIVED
 Office of Oil and Gas
AUG 9 2024
 WV Department of
 Environmental Protection

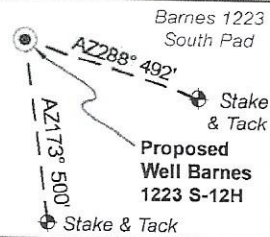


Page 1
Match Line

5/8" Rebar

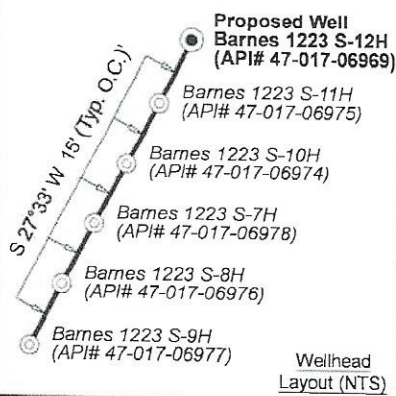


**Well Location References
Not to Scale**



Legend

- Proposed gas well
- Well Reference, as noted
- Monument, as noted
- Existing Well, as noted
- Existing Plugged Well, as noted
- Digitized Well, as noted
- Creek or Drain
- Existing Road
- Surface boundary (approx.)



West Virginia Coordinate System of 1927, North Zone based upon Differential GPS Measurements.	UTM Zone 17, NAD 1983 Plat orientation and corner and well references are based upon the grid north meridian. Well location references are based upon the magnetic meridian.	
Notes: Well No. Van Wie 1223 S-12H WVCS 1927, North Zone Top Hole Coordinates Lat: 39°06'53.92" Lon: 80°43'02.82" Landing Point Coordinates Lat: 39°06'47.41" Lon: 80°42'27.78" Bottom Hole Coordinates Lat: 39°03'16.98" Lon: 80°40'53.59"	Notes: Well No. Van Wie 1223 S-12H UTM NAD 1983 (USSF) Top Hole Coordinates N: 14,204,642.59' E: 1,720,606.87' Landing Point Coordinates N: 14,203,992.85' E: 1,723,370.08' Bottom Hole Coordinates N: 14,182,737.55' E: 1,730,866.17'	Notes: Well No. Van Wie 1223 S-12H UTM NAD 1983 (Meters) Top Hole Coordinates N: 4,329,583.721m E: 524,442.023m Landing Point Coordinates N: 4,329,385.679m E: 525,284.251m Bottom Hole Coordinates N: 4,322,907.051m E: 527,569.064m

FILE NO: 171-12-30-FC-22
DRAWING NO: Barnes 1223 S-12H Well Plat
SCALE: 1" = 2000'
MINIMUM DEGREE OF ACCURACY: Submeter
PROVEN SOURCE OF ELEVATION: CORS, Bridgeport, WV

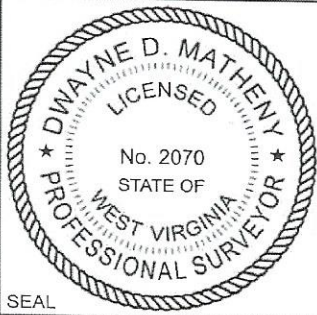
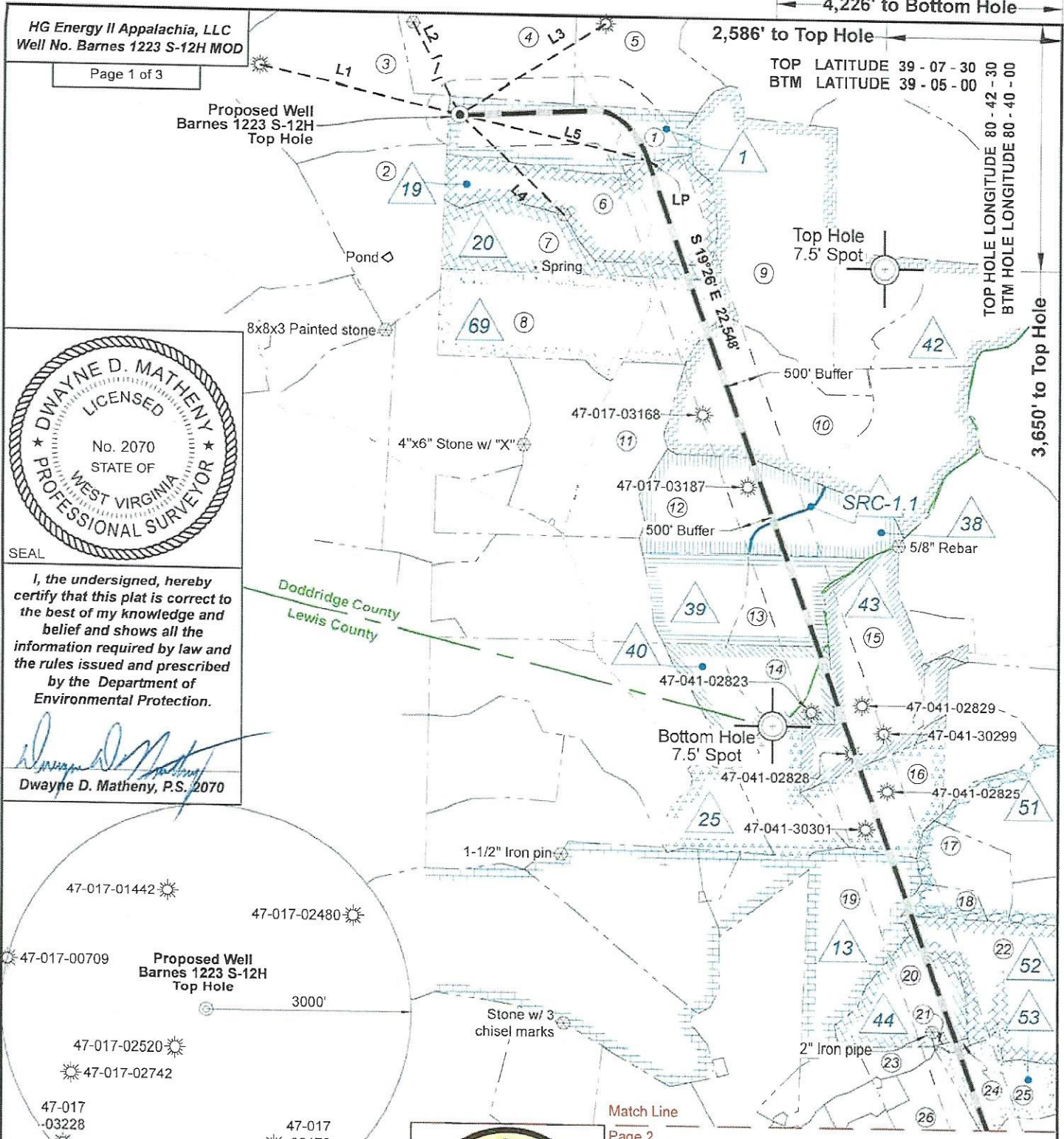
STATE OF WEST VIRGINIA
DEPARTMENT OF ENVIRONMENTAL PROTECTION
OIL AND GAS DIVISION

DATE: July 29 20 24
OPERATOR'S WELL NO. Barnes 1223 S-12H
API WELL NO
47 - 017 - 06969
STATE COUNTY PERMIT

WELL TYPE: OIL GAS LIQUID INJECTION WASTE DISPOSAL
(IF GAS) PRODUCTION: STORAGE DEEP SHALLOW

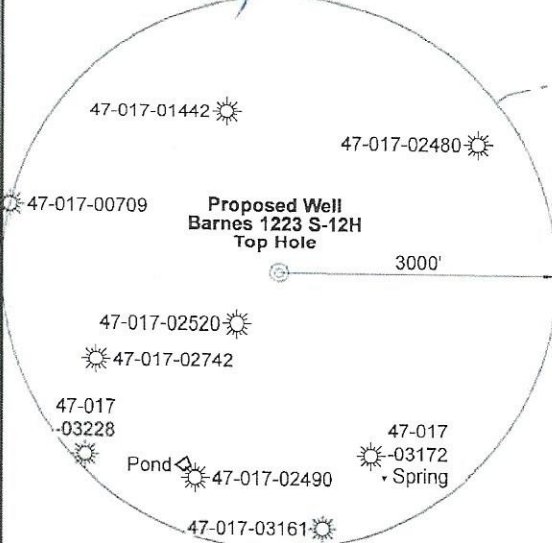
LOCATION: ELEVATION: 1,330' WATERSHED: Fink Creek QUADRANGLE: Vadis
DISTRICT: Cove COUNTY: Doddridge
SURFACE OWNER: Marilyn Barnes, et al ACREAGE: 08/23/2024
ROYALTY OWNER: Carolyn Rastle Bass, et al LEASE NO: ACREAGE: 123
PROPOSED WORK: DRILL CONVERT DRILL DEEPER FRACTURE OR STIMULATE PLUG OFF OLD FORMATION
 PERFORATE NEW FORMATION OTHER PHYSICAL CHANGE IN WELL (SPECIFY) BH & LP MOD
 PLUG AND ABANDON CLEAN OUT AND REPLUG TARGET FORMATION: Marcellus Shale ESTIMATED DEPTH: 7,180' TVD 31,038' MD

WELL OPERATOR: HG Energy II Appalachia, LLC DESIGNATED AGENT: Diane C. White
ADDRESS: 5260 Dupont Road ADDRESS: 5260 Dupont Road
Parkersburg, WV 26101 Parkersburg, WV 26101



I, the undersigned, hereby certify that this plat is correct to the best of my knowledge and belief and shows all the information required by law and the rules issued and prescribed by the Department of Environmental Protection.

Dwayne D. Matheny
Dwayne D. Matheny, P.S. 2070



Note: 0 water wells, 0 cistern, and 0 pond were found within 1500' of proposed well. No occupied dwellings or buildings 2,500 square feet or larger used to house or shelter dairy cattle or poultry husbandry are located within 625' of the center of the well pad.



Match Line

Page 2

Tag	Bearing	Dist.	Description
L1	S 76°50' E	3,008.9'	47-017-00709
L2	S 27°25' E	2,292.4'	5/8" Rebar
L3	S 57°06' W	2,529.5'	47-041-02480
L4	N 46°14' W	2,128.9'	1/2" Rebar @ fence corner
L5	S 76°46' E	2,838.6'	Landing Point

FILE NO: 171-12-30-FC-22
 DRAWING NO: Barnes 1223 S-12H Well Plat
 SCALE: 1" = 2000'
 MINIMUM DEGREE OF ACCURACY: Submeter
 PROVEN SOURCE OF ELEVATION: CORS, Bridgeport, WV

STATE OF WEST VIRGINIA
 DEPARTMENT OF ENVIRONMENTAL PROTECTION
OIL AND GAS DIVISION

DATE: July 29 20 24
 OPERATOR'S WELL NO. Barnes 1223 S-12H
 API WELL NO
 47 - 017 - 06969
 STATE COUNTY PERMIT

WELL TYPE: OIL GAS LIQUID INJECTION WASTE DISPOSAL
 (IF GAS) PRODUCTION: STORAGE DEEP SHALLOW

LOCATION: ELEVATION: 1,330' WATERSHED: Fink Creek QUADRANGLE: Vadis
 DISTRICT: Cove COUNTY: Doddridge
 SURFACE OWNER: Marilyn Barnes, et al ACREAGE: 08/23/2024
 ROYALTY OWNER: Carolyn Rastle Bass, et al LEASE NO: ACREAGE: 123
 PROPOSED WORK: DRILL CONVERT DRILL DEEPER FRACTURE OR STIMULATE PLUG OFF OLD FORMATION
 PERFORATE NEW FORMATION OTHER PHYSICAL CHANGE IN WELL (SPECIFY) BH & LP MOD
 PLUG AND ABANDON CLEAN OUT AND REPLUG TARGET FORMATION: Marcellus Shale ESTIMATED DEPTH: 7,180' TVD 31,038' MD

WELL OPERATOR: HG Energy II Appalachia, LLC DESIGNATED AGENT: Diane C. White
 ADDRESS: 5260 Dupont Road ADDRESS: 5260 Dupont Road
 Parkersburg, WV 26101 Parkersburg, WV 26101



Doddridge Co. (Cove Dist.)				
No.	TM / Par	Owner	Bk / Pg	Ac.
1	10 / 16	Marilyn Barnes, et al	W28 / 552	76.10
2	9 / 27	Willard L. Fuller, III	215 / 149	89.00
3	9 / 20	Clyde W. Marsh, et al	W36 / 152	149.00
4	9 / 21	Carolyn R. Bass, et al	239 / 151	120.00
5	10 / 16.1	Richard E. Spracklen	A41 / 714	74.90
6	10 / 17	Marilyn Barnes, et al	W28 / 552	90.00
7	9 / 28	Maxine S. Rastle	A58 / 287	53.63
8	14 / 1	Maxine S. Rastle	A58 / 287	129.04
9	14 / 2	Miriam N. & Atlee Hershberger, Jr.	488 / 622	153.55
10	14 / 2.2	Michael E. Dayhoff	429 / 259	128.50
11	13 / 17	Maxine S. Rastle	A58 / 287	116.18
12	14 / 3	Keith A. Tatro	W56 / 172	101.37
13	14 / 4.1	James & Mary Donnelly	222 / 564	41.20
14	14 / 5.1	Allen Smith	514 / 134	35.46

Lewis Co. (Freemans Creek Dist.)				
No.	TM / Par	Owner	Bk / Pg	Ac.
15	1D / 11	Wayne N. Weiss	W65 / 637	89.24
16	1D / 14	Alice R. Taylor, et al	745 / 851	54.90
17	1D / 15	Dawn C. Lozina, et al	726 / 836	28.96
18	1D / 17	Dawn C. Lozina, et al	726 / 836	11.04
19	1D / 16	Maxine S. Cole Rastle	W55 / 570	99.40
20	1E / 51	Stephen C. Schertz	778 / 688	46.00
21	1E / 50	Mark H. Schulte	722 / 936	0.49
22	2E / 1	Dawn C. Lozina, et al	726 / 836	83.00
23	1E / 48	Stephen C. Schertz	778 / 688	8.60
24	1E / 52	Mark H. Schulte	722 / 936	1.19
25	1E / 53	Elton R. Ross	W20 / 443	36.00
26	1E / 54	Stephen C. Schertz	778 / 688	31.90
27	1E / 44	James R. Radcliff	595 / 26	231.00
28	2E / 22.3	David N. & Rebecca E. King	638 / 776	19.50
29	2E / 22.2	David N. & Rebecca E. King	638 / 776	20.00
30	2E / 22.6	David N. & Rebecca E. King	638 / 776	12.50
31	2E / 22	William M. & William B. Vavrek	642 / 361	58.62
32	2E / 18	David N. & Rebecca E. King	638 / 776	32.00
33	2E / 21	We-R-Farmers, LLC	753 / 303	5.00
34	2E / 23	We-R-Farmers, LLC	753 / 303	40.00
35	2F / 14.1	We-R-Farmers, LLC	753 / 303	55.00
36	2F / 2	John S. & Nancy J. Riley	327 / 244	10.50
37	2F / 3	John S. & Nancy J. Riley	546 / 70	12.00
38	2F / 9	Marites & Christian M. Spencer	781 / 167	10.50
39	2F / 12	Marites & Christian M. Spencer	781 / 167	8.50
40	2F / 13	Marites & Christian M. Spencer	781 / 167	8.50
41	2F / 17.1	John & Donna Ramzy	609 / 255	3.20
42	2F / 17.2	Joshua D. Hardbarger	698 / 822	5.86
43	2F / 17	William J. & Deborah J. Rogers	573 / 119	54.93

ID	Lease
1	Carolyn Rastle Bass, et al
13	William H. Hall & Mary E. Hall
19	Carolyn Rastle Bass, et al
20	Maxine Cole Rastle, et al
25	HG Energy II Appalachia, LLC
38	HG Energy II Appalachia, LLC
39	HG Energy II Appalachia, LLC
40	HG Energy II Appalachia, LLC
42	Leopold Krenn, et ux
43	HG Energy II Appalachia, LLC
44	G.C. Starcher, et al
47	Lydia Starcher, et al
51	HG Energy II Appalachia, LLC
52	Dollie Means, et al
53	N.N. Wiseman, et ux, et al
67	Dayna Laverne Smith, et al
68	Albert & Margaret Ralston, et al
69	Ivah R. Schmidt, et vir, et al
75	Moore H. & Emma H. Newlon, et al
76	James F. Carder, dba Jim's Oil & Gas
93	Dennis Scott Reese
SRC-1.1	State of West Virginia, Department of Highways

FILE NO: 171-12-30-FC-22
DRAWING NO: Barnes 1223 S-12H Well Plat
SCALE: 1" = 2000'
MINIMUM DEGREE OF ACCURACY:
Submeter
PROVEN SOURCE OF ELEVATION:
CORS, Bridgeport, WV

STATE OF WEST VIRGINIA
DEPARTMENT OF ENVIRONMENTAL PROTECTION
OIL AND GAS DIVISION

DATE: July 29 20 24
OPERATOR'S WELL NO. Barnes 1223 S-12H
API WELL NO
47 - 017 - 06969
STATE COUNTY PERMIT

WELL TYPE: OIL GAS LIQUID INJECTION WASTE DISPOSAL
(IF GAS) PRODUCTION: STORAGE DEEP SHALLOW

LOCATION: ELEVATION: 1,330' WATERSHED: Fink Creek QUADRANGLE: Vadis
DISTRICT: Cove COUNTY: Doddridge
SURFACE OWNER: Marilyn Barnes, et al ACREAGE: 76.10
ROYALTY OWNER: Carolyn Rastle Bass, et al LEASE NO: _____ ACREAGE: 123
PROPOSED WORK: DRILL CONVERT DRILL DEEPER FRACTURE OR STIMULATE PLUG OFF OLD FORMATION
 PERFORATE NEW FORMATION OTHER PHYSICAL CHANGE IN WELL (SPECIFY) _____ BH & LP MOD
 PLUG AND ABANDON CLEAN OUT AND REPLUG TARGET FORMATION: Marcellus Shale ESTIMATED DEPTH: 7,180' TVD 31,038' MD

WELL OPERATOR: HG Energy II Appalachia, LLC DESIGNATED AGENT: Diane C. White
ADDRESS: 5260 Dupont Road ADDRESS: 5260 Dupont Road
Parkersburg, WV 26101 Parkersburg, WV 26101

08/23/2024

**HG Energy II Appalachia, LLC
Barnes 1223 S-12H Lease Chain**

1223S Tract	LEGACY LEASE NUMBER	TAX MAP	LEASE NUMBER	GRANTOR/LESSOR	GRANTEE/LESSEE	ROYALTY	DEED BOOK	PAGE
X 1	HGII02150 et al	02-0010-0016-0000	HGII02150 et al	Carolyn Rastle Bass	HG ENERGY II APPALACHIA LLC	NOT LESS THAN 1/8	520	529
				Marilyn Rastle Barnes	HG ENERGY II APPALACHIA LLC	NOT LESS THAN 1/8	520	527
				Richard E. Spracklen	HG ENERGY II APPALACHIA LLC	NOT LESS THAN 1/8	521	214
				Chad W. Johnson			500	298
				James J. Cava, Jr.	HG ENERGY II APPALACHIA LLC HG ENERGY II APPALACHIA LLC	NOT LESS THAN 1/8 NOT LESS THAN 1/8	501	398
X 13	FK054822 FK079060 FEE	03-001D-0016-0000 03-001D-0008-0000 03-001D-0008-0001 03-001D-0007-0000 03-001E-0012-0000	Q101029000	WILLIAM H. HALL AND MARY E. HALL	SOUTH PENN OIL COMPANY	NOT LESS THAN 1/8	24	364
				SOUTH PENN OIL COMPANY	SOUTH PENN NATURAL GAS CO	ASSIGNMENT	156	570
				SOUTH PENN NATURAL GAS CO	HOPE NATURAL GAS COMPANY	ASSIGNMENT	106	494
				HOPE NATURAL GAS COMPANY	CONSOLIDATED GAS SUPPLY CORPORATION	CONFIRMATORY DEED	294	89
				CONSOLIDATED GAS SUPPLY CORPORATION	CONSOLIDATED GAS TRANSMISSION CORPORATION	ASSIGNMENT	425	127
				CONSOLIDATED GAS TRANSMISSION CORPORATION	CNG TRANSMISSION CORPORATION	MERGER/NAME CHANGE	51	795
				CNG TRANSMISSION CORPORATION	DOMINION TRANSMISSION, INC.	MERGER/NAME CHANGE	58	362
				DOMINION TRANSMISSION, INC.	CNX GAS COMPANY LLC	MEMORANDUM OF FARMOUT AGREEMENT	672	154
				CNX GAS COMPANY LLC	NOBLE ENERGY, INC.	LIMITED PARTIAL ASSIGNMENT (50%)	684	57
				DOMINION TRANSMISSION, INC.	CNX GAS COMPANY LLC AND NOBLE ENERGY, INC.	PARTIAL ASSIGNMENT (32%)	712	848
				CNX GAS COMPANY LLC	NOBLE ENERGY, INC.	ASSIGNMENT	717	1
				NOBLE ENERGY, INC.	HG ENERGY II APPALACHIA, LLC	ASSIGNMENT	722	170
				DOMINON TRANSMISSION, INC.	DOMINION ENERGY TRANSMISSION, INC.	MERGER/NAME CHANGE	WVSOS	
				DOMINION ENERGY TRANSMISSION, INC.	HG ENERGY II APPALACHIA, LLC	SECOND AMENDMENT TO MEMORANDUM OF FARMOUT AGREEMENT	723	499
				DOMINION ENERGY TRANSMISSION, INC.	HG ENERGY II APPALACHIA, LLC	THIRD AMENDMENT TO MEMORANDUM OF FARMOUT AGREEMENT	734	558
DOMINION ENERGY TRANSMISSION, INC.	HG ENERGY II APPALACHIA, LLC	ASSIGNMENT (68%)	736	220				
X 19	HGII03860 ET AL	02-0010-0017-0000	HGII03860 ET AL	Carolyn Rastle Bass	HG ENERGY II APPALACHIA LLC	NOT LESS THAN 1/8	520	531
				Marilyn Rastle Barnes	HG ENERGY II APPALACHIA LLC	NOT LESS THAN 1/8	520	533
X 20	HGII02943 et al	02-0009-0028-0000 02-0014-0001-0000	HGII02943 et al	Maxine Cole Rastle aka Maxine S. Rastle			526	409
					HG ENERGY II APPALACHIA LLC	NOT LESS THAN 1/8		
				Mike Ross, Inc.	HG ENERGY II APPALACHIA LLC	NOT LESS THAN 1/8	512	216
				Thomas Edward Rastle	HG ENERGY II APPALACHIA LLC	NOT LESS THAN 1/8	513	132
				Michael Joseph Riley	HG ENERGY II APPALACHIA LLC	COTENENCY AFFIDAVIT	68	90
				Thomas Robert Riley	HG ENERGY II APPALACHIA LLC	COTENENCY AFFIDAVIT	68	90
				Patricia Ann Riley fka Patricia Ann Martin	HG ENERGY II APPALACHIA LLC	COTENENCY AFFIDAVIT	68	90
				Yvonne Rastle Foster	HG ENERGY II APPALACHIA LLC	NOT LESS THAN 1/8	514	714
				Alice Rastle Taylor	HG ENERGY II APPALACHIA LLC	NOT LESS THAN 1/8	514	706
				Ridgewood Development LLC (Samuel Hammett; managing member)			68	90
					HG ENERGY II APPALACHIA LLC	COTENENCY AFFIDAVIT		
				Armstrong Land Management (Richard Armstrong; President)	HG ENERGY II APPALACHIA LLC	COTENENCY AFFIDAVIT	68	90
				Henry G. Rastle	HG ENERGY II APPALACHIA LLC	NOT LESS THAN 1/8	516	21
The Unknown Heirs or Successors of Max Albers	HG ENERGY II APPALACHIA LLC	COTENENCY AFFIDAVIT	68	90				
The Unknown Heirs or Successors of Gerald Albers	HG ENERGY II APPALACHIA LLC	COTENENCY AFFIDAVIT	68	90				

				The Unknown Heirs or Successors of Nancy Albers	HG ENERGY II APPALACHIA LLC	COTENENCY AFFIDAVIT	68	90	
				Josephine Sanchez	HG ENERGY II APPALACHIA LLC	COTENENCY AFFIDAVIT	68	90	
				John J. Battin, Jr.	HG ENERGY II APPALACHIA LLC	COTENENCY AFFIDAVIT	68	90	
				Jamison M. R. Battin aka Jamison Battin	HG ENERGY II APPALACHIA LLC	COTENENCY AFFIDAVIT	68	90	
				Jennifer M. Battin	HG ENERGY II APPALACHIA LLC	COTENENCY AFFIDAVIT	68	90	
X	25	FK080153 FEE	03-001D-0009-0000 03-001D-0010-0000 03-001D-0014-0000	FK080153 FEE	DOMINION ENERGY TRANSMISSION, INC.	HG Energy II Appalachia, LLC	MINERAL DEED	740	746
X	38	FK079412 FEE	p/o 02-0014-0003-0000	FK079412 FEE	DOMINION ENERGY TRANSMISSION, INC.	HG Energy II Appalachia, LLC	MINERAL DEED	434	401
X	39	FK083813 FEE	02-0014-0004-0000 02-0014-0004-0001	FK083813 FEE	DOMINION ENERGY TRANSMISSION, INC.	HG Energy II Appalachia, LLC	MINERAL DEED	434	401
X	40	FK079413 FEE	02-0014-0005-0000 02-0014-0005-0001	FK079413 FEE	DOMINION ENERGY TRANSMISSION, INC.	HG Energy II Appalachia, LLC	MINERAL DEED	434	401
X	42	FK054802 FK087531 FEE	02-0014-0002-0000 02-0014-0002-0001 02-0014-0002-0002 02-0014-0002-0003 02-0014-0002-0004	Q100902000	LEOPOLD KRENN AND THERESIA KRENN, HIS WIFE	SOUTH PENN OIL COMPANY	NOT LESS THAN 1/8	23	157
					SOUTH PENN OIL COMPANY	SOUTH PENN NATURAL GAS CO	ASSIGNMENT	53	162
					SOUTH PENN NATURAL GAS CO	HOPE NATURAL GAS COMPANY	ASSIGNMENT	54	178
					HOPE NATURAL GAS COMPANY	CONSOLIDATED GAS SUPPLY CORPORATION	CONFIRMATORY DEED	143	345
					CONSOLIDATED GAS SUPPLY CORPORATION	CONSOLIDATED GAS TRANSMISSION CORPORATION	ASSIGNMENT	135	583
					CONSOLIDATED GAS TRANSMISSION CORPORATION	CNG TRANSMISSION CORPORATION	MERGER/NAME CHANGE	WVSOS	
					CNG TRANSMISSION CORPORATION	DOMINION TRANSMISSION, INC.	MERGER/NAME CHANGE	WVSOS	
					DOMINION TRANSMISSION, INC.	CNX GAS COMPANY LLC	MEMORANDUM OF FARMOUT AGREEMENT	323	187
					CNX GAS COMPANY LLC	NOBLE ENERGY, INC.	LIMITED PARTIAL ASSIGNMENT (50%)	337	446
					DOMINION TRANSMISSION, INC.	CNX GAS COMPANY LLC AND NOBLE ENERGY INC	NOT LESS THAN 1/8	394	646
					DOMINION TRANSMISSION, INC.	CNX GAS COMPANY LLC AND NOBLE ENERGY, INC.	PARTIAL ASSIGNMENT (32%)	424	234
					CNX GAS COMPANY LLC	NOBLE ENERGY, INC.	ASSIGNMENT	377	212
					NOBLE ENERGY, INC.	HG ENERGY II APPALACHIA, LLC	ASSIGNMENT	449	468
					DOMINON TRANSMISSION, INC.	DOMINION ENERGY TRANSMISSION, INC.	MERGER/NAME CHANGE	WVSOS	
					DOMINION ENERGY TRANSMISSION, INC.	HG ENERGY II APPALACHIA, LLC	SECOND AMENDMENT TO MEMORANDUM OF FARMOUT AGREEMENT	454	483
					DOMINION ENERGY TRANSMISSION, INC.	HG ENERGY II APPALACHIA, LLC	FARMOUT AGREEMENT	475	576
					DOMINION ENERGY TRANSMISSION, INC.	HG ENERGY II APPALACHIA, LLC	ASSIGNMENT (68%)	479	1
X	43	FK079380 FEE	03-001D-0011-0000 03-001D-0011-0001 03-001D-0011-0002 03-001D-0011-0003 03-001D-0011-0004	FK079380 FEE	DOMINION ENERGY TRANSMISSION, INC.	HG Energy II Appalachia, LLC	MINERAL DEED	740	746
X	44	FK055806	03-001E-0050-0000 03-1E-0051-0000	Q100391000	G.C. STARCHER ET AL	HOPE NATURAL GAS COMPANY	NOT LESS THAN 1/8	169	169
					HOPE NATURAL GAS COMPANY	CONSOLIDATED GAS SUPPLY CORPORATION	CONFIRMATORY DEED	294	89
					CONSOLIDATED GAS SUPPLY CORPORATION	CONSOLIDATED GAS TRANSMISSION CORPORATION	ASSIGNMENT	425	127
					CONSOLIDATED GAS TRANSMISSION CORPORATION	CNG TRANSMISSION CORPORATION	MERGER/NAME CHANGE	51	795
					CNG TRANSMISSION CORPORATION	DOMINION TRANSMISSION, INC.	MERGER/NAME CHANGE	9	628
					CNX GAS COMPANY LLC	NOBLE ENERGY, INC.	LIMITED PARTIAL ASSIGNMENT (50%)	684	57
					DOMINION TRANSMISSION, INC.	CNX GAS COMPANY LLC AND NOBLE ENERGY, INC.	PARTIAL ASSIGNMENT (32%)	712	848
					CNX GAS COMPANY LLC	NOBLE ENERGY, INC.	ASSIGNMENT	717	1
					NOBLE ENERGY, INC.	HG ENERGY II APPALACHIA, LLC	ASSIGNMENT	722	170
					DOMINON TRANSMISSION, INC.	DOMINION ENERGY TRANSMISSION, INC.	MERGER/NAME CHANGE	WVSOS	
					DOMINION ENERGY TRANSMISSION, INC.	HG ENERGY II APPALACHIA, LLC	ASSIGNMENT (68%)	736	220

X	47	FK066125 HGII0001 HGII0002	p/o 03-002E-0044-0000	Q100990000	LYDIA STARCHER, SINGLE; D. O. MEANS AND CORA MEANS, HIS WIFE; MINNIE M. BRADFORD AND R. D. BRADFORD, HER HUSBAND; ELYSON M. LASURE AND SIMON LASURE, HER HUSBAND; C. W. RADCLIFF, WIDOWER; OPAL WOOFER AND OTIS M. WOOFER, HER HUSBAND; J. B. MEANS; CLARICE PRATT AND HARLEY PRATT, HER HUSBAND; ELLA METZ, WIDOW; OLEY U. CAMPBELL AND A. B. CAMPBELL, HER HUSBAND; OLEY U. CAMPBELL, GUARDIAN OF LORETTA MAE MEANS; JAMES G. MEANS; WILLIAM A. MEANS, SINGLE; FRANCIS M. MEANS AND EDRIE E. MEANS, HIS WIFE; MARGARET F. FARBER AND SAMUEL H. FARBER, HER HUSBAND; NORMA O. DONALD AND R. W. DONALD, HER HUSBAND; PEARL WHITE AND VIRGIL A. WHITE, HER HUSBAND; VIRGIL C. RADCLIFF AND CATHERINE E. RADLIFF, HIS WIFE, SARAH I. WALLICK AND ELMORE W. WALLICK, HER HUSBAND; MILDRED MCINTYRE AND JAMES W. MCINTYRE, HER HUSBAND; EDITH ELLEN KIDWELL AND FRANCIS J. KIDWELL, HER HUSBAND; OPAL BRADY AND WOODROW W. BRADY, HER HUSBAND; ROY I. MEANS AND IRENE E. MEANS, HIS WIFE; AGNES E. MEANS, SINGLE; ARLIE TETER AND CLARENCE TETER, HER HUSBAND; O. R. MEANS AND VADA MEANS, HIS WIFE; BEULAH TUCKER AND G. B. TUCKER, HER HUSBAND; MARGARET MEANS, WIDOW; MARGARET ANN YARBROUGH; MYRA R. MCBRIDE, COMMITTEE OF GRACE MEANS, AN INCOMPETENT PERSON; AND NORA O. BARNES AND THOMAS G. BARNES, HER HUSBAND	HOPE NATURAL GAS COMPANY	NOT LESS THAN 1/8	236	141					
					HOPE NATURAL GAS COMPANY	CONSOLIDATED GAS SUPPLY CORPORATION	CONFIRMATORY DEED	294	89					
					CONSOLIDATED GAS SUPPLY CORPORATION	CONSOLIDATED GAS TRANSMISSION CORPORATION	ASSIGNMENT	425	127					
					CONSOLIDATED GAS TRANSMISSION CORPORATION	CNG TRANSMISSION CORPORATION	MERGER/NAME CHANGE	51	795					
					CNG TRANSMISSION CORPORATION	DOMINION TRANSMISSION, INC.	MERGER/NAME CHANGE	9	628					
					DOMINION TRANSMISSION, INC.	CNX GAS COMPANY LLC	MEMORANDUM OF FARMOUT AGREEMENT	672	154					
					CNX GAS COMPANY LLC	NOBLE ENERGY, INC.	LIMITED PARTIAL ASSIGNMENT (50%)	684	57					
					DOMINION TRANSMISSION, INC.	CNX GAS COMPANY LLC AND NOBLE ENERGY, INC.	PARTIAL ASSIGNMENT (32%)	712	848					
					CNX GAS COMPANY LLC	NOBLE ENERGY, INC.	ASSIGNMENT	717	1					
					NOBLE ENERGY, INC.	HG ENERGY II APPALACHIA, LLC	ASSIGNMENT	722	170					
					DOMINON TRANSMISSION, INC.	DOMINION ENERGY TRANSMISSION, INC.	MERGER/NAME CHANGE	WVSOS						
					DOMINION ENERGY TRANSMISSION, INC.	HG ENERGY II APPALACHIA, LLC	SECOND AMENDMENT TO MEMORANDUM OF FARMOUT AGREEMENT	723	499					
					DOMINION ENERGY TRANSMISSION, INC.	HG ENERGY II APPALACHIA, LLC	THIRD AMENDMENT TO MEMORANDUM OF FARMOUT AGREEMENT	734	558					
					DOMINION ENERGY TRANSMISSION, INC.	HG ENERGY II APPALACHIA, LLC	ASSIGNMENT (68%)	736	220					
					X	51	FK078560 FEE	03-001D-0015-0000 03-001D-0017-0000 03-002D-0008-0000 03-002D-0009-0000	FK078560 FEE	OTHO MEANS AND OMIE MEANS, HIS WIFE	SOUTH PENN OIL COMPANY	NOT LESS THAN 1/8	99	68
										SOUTH PENN OIL COMPANY	SOUTH PENN NATURAL GAS CO	ASSIGNMENT	156	570
										SOUTH PENN NATURAL GAS CO	HOPE NATURAL GAS COMPANY	ASSIGNMENT	166	494
HOPE NATURAL GAS COMPANY	CONSOLIDATED GAS SUPPLY CORPORATION	CONFIRMATORY DEED	294	89										
CONSOLIDATED GAS SUPPLY CORPORATION	CONSOLIDATED GAS TRANSMISSION CORPORATION	ASSIGNMENT	425	127										
CONSOLIDATED GAS TRANSMISSION CORPORATION	CNG TRANSMISSION CORPORATION	MERGER/NAME CHANGE	51	795										
CNG TRANSMISSION CORPORATION	DOMINION TRANSMISSION, INC.	MERGER/NAME CHANGE	58	362										
DOMINION TRANSMISSION, INC.	CNX GAS COMPANY LLC	MEMORANDUM OF FARMOUT AGREEMENT	672	154										
CNX GAS COMPANY LLC	NOBLE ENERGY, INC.	LIMITED PARTIAL ASSIGNMENT (50%)	684	57										
NOBLE ENERGY, INC.	HG ENERGY II APPALACHIA LLC	ASSIGNMENT	732	101										
DOMINON TRANSMISSION, INC.	DOMINION ENERGY TRANSMISSION, INC.	MERGER/NAME CHANGE	WVSOS											
DOMINION ENERGY TRANSMISSION, INC.	HG ENERGY II APPALACHIA, LLC	SECOND AMENDMENT TO MEMORANDUM OF FARMOUT AGREEMENT	723	499										

				DOMINION ENERGY TRANSMISSION, INC.	HG ENERGY II APPALACHIA, LLC	ASSIGNMENT (68%)	736	220	
X	67	HGII04286 et al	p/o 03-002E-0022-0000 03-002E-0022-0002 p/o 03-002E-0022-0003 03-002E-0022-0007	HGII04286 et al	Dayna Laverne Smith	HG ENERGY II APPALACHIA LLC	NOT LESS THAN 1/8	808	845
					William Don Chapman	HG ENERGY II APPALACHIA LLC	NOT LESS THAN 1/8	803	838
					James William Linger, III	HG ENERGY II APPALACHIA LLC	NOT LESS THAN 1/8	804	267
					Scott Michael Chapman	HG ENERGY II APPALACHIA LLC	NOT LESS THAN 1/8	803	840
					Dennis Kirk Chapman	HG ENERGY II APPALACHIA LLC	NOT LESS THAN 1/8	804	97
					Unknown Heirs or successors of Homer W. Ralston	HG ENERGY II APPALACHIA, LLC	HUO- Hearing 7/30/2024, Oil & Gas Commission	Docket 364	408
					Unknown Heirs or successors of David J. Ralston	HG ENERGY II APPALACHIA, LLC	HUO- Hearing 7/30/2024, Oil & Gas Commission	Docket 364	408
					Unknown Heirs or successors of Olen A. Ralston	HG ENERGY II APPALACHIA, LLC	HUO- Hearing 7/30/2024, Oil & Gas Commission	Docket 364	408
					Unknown Heirs or successors of Everett E. Ralston				
					See two heirs below	HG ENERGY II APPALACHIA, LLC	HUO- Hearing 7/30/2024, Oil & Gas Commission	Docket 364	408
					Lenora Ralston Mills aka Lenora Mills aka Lenora M. Mills aka Lenora M. Hemshrodt	HG ENERGY II APPALACHIA, LLC	HUO- Hearing 7/30/2024, Oil & Gas Commission	Docket 364	408
					Theresa Harris aka Theresa L. Harris	HG ENERGY II APPALACHIA, LLC	HUO- Hearing 7/30/2024, Oil & Gas Commission	Docket 364	408
X	68	WACO&G-3	03-002E-0022-0001 03-002E-0022-0006 03-002F-0110-0000 p/o 03-002E-0022-0000 p/o 03-002E-0022-0003	WACO&G-3	ALBERT RALSTON AND MARGARET RALSTON, AND J.A. RADCLIFF AND BIRD RADCLIFF	ROBERT KRAUS AND FRANK WHELAN	NOT LESS THAN 1/8	74	419
					ROBERT KRAUS AND FRANK WHELAN	CARNEGIE NATURAL GAS COMPANY	ASSIGNMENT	250	418
					CARNEGIE NATURAL GAS COMPANY	A.M. SNIDER	ASSIGNMENT	250	418
					A.M. SNIDER	FRED KIGER AND ALVA MCCULLOUGH	ASSIGNMENT	250	269
					FRED KIGER AND ALVA MCCULLOUGH	BERNARD S. NEEDLE, DBA ELDEEN OIL & GAS COMPANY (49/64) AND W. V. PROPER (15/64)	ASSIGNMENT	258	327
					BERNARD S. NEEDLE, DBA ELDEEN OIL & GAS COMPANY, AND W.V. PROPER	FRED KIGER AND ALVA MCCULLOUGH	PARTIAL ASSIGNMENT	256	361
					WILLIAM V. PROPER AND BERNARD S. NEEDLE, DBA ELDEEN OIL & GAS COMPANY	PETROSUR OIL CORPORATION	ASSIGNMENT	258	341
					PETROSUR OIL CORPORATION	WILLIAM V. PROPER AND BERNARD S. NEEDLE, DBA ELDEEN OIL AND GAS COMPANY	ASSIGNMENT	261	665
					WILLIAM V. PROPER AND BERNARD S. NEEDLE, DBA ELDEEN OIL & GAS COMPANY	KATHERINE H. PROPER	LAST WILL AND TESTAMENT	M	6
					BERNARD S. NEEDLE AND LUCILLE NEEDLE, AND KATHERINE H. PROPER	R.K. SHEFFER DBA PRINE PETROLEUM COMPANY	ASSIGNMENT	286	475
					FRED KIGER AND ALVA MCCULLOUGH	R.K. SHEFFER	ASSIGNMENT	286	436
					R.K. SHEFFER, DBA PRIME PETROLEUM COMPANY	VIRONT PETROLEUM COMPANY	PARTIAL ASSIGNMENT (60%)	286	460
					R.K. SHEFFER, DBA PRIME PETROLEUM COMPANY	VIRONT PETROLEUM COMPANY	PARTIAL ASSIGNMENT (5%)	286	463
					R., SHEFFER	IRA VAN TUYL	ASSIGNMENT	291	330
					IRA VAN TUYL, IN HIS OWN RIGHT, AND IRA VAN TUYL AND ELSIN VAN TUYL, PARTNERS TRADING AND DOING BUSINESS A V-T DRILLING COMPANY	VIRONT PETROLEUM COMPANY	ASSIGNMENT	312	432
					VIRONT PETROLEUM COMPANY INC	JETT PETROLEUM INC	ASSIGNMENT	341	597
					JETT PETROLEUM COMPANY INC	JAY SHEARER, DBA RED GAS COMPANY	ASSIGNMENT	545	460
					JAY SHEARER, DBA RED GAS COMPANY	TRIAD ENERGY CORP	ASSIGNMENT	568	5
					TRIAD ENERGY CORPORATION	TRIAD HUNTER LLC	ASSIGNMENT	641	333
					TRIAD HUNTER LLC	WACO OIL & GAS CO INC	ASSIGNMENT	679	476
					WACO OIL & GAS CO INC	HG ENERGY II APPALACHIA, LLC	ASSIGNMENT	802	947
					X	69	TBD	02-0014-0001-0000	TBD
HOPE NATURAL GAS COMPANY	CONSOLIDATED GAS SUPPLY CORPORATION	CONFIRMATORY DEED	143	345					

				CONSOLIDATED GAS SUPPLY CORPORATION	CONSOLIDATED GAS TRANSMISSION CORPORATION	ASSIGNMENT	135	583
				CONSOLIDATED GAS TRANSMISSION CORPORATION	CNG TRANSMISSION CORPORATION	MERGER/NAME CHANGE	328	398
				CNG TRANSMISSION CORPORATION	DOMINION TRANSMISSION, INC.	MERGER/NAME CHANGE	332	570
				DOMINION TRANSMISSION INC	CONSOL ENERGY HOLDINGS LLC XVI	ASSIGNMENT	245	1
				CONSOL ENERGY HOLDINGS LLC XVI	CONSOL GAS COMPANY	MERGER/NAME CHANGE	293	252
				CONSOL GAS COMPANY	CNX GAS COMPANY	MERGER/NAME CHANGE	293	252
				CNX GAS COMPANY LLC	HG ENERGY II APPALACHIA LLC	ASSIGNMENT	508	457
				MOORE H. NEWLON AND EMMA HEINOLD NEWLON, HIS WIFE; VIRGINIA NEWLON BINGHAM AND RICHARD BINGHAM, HER HUSBAND; FRANCES MORGAN NEWLON, WIDOW; JAMES G. NEWLON AND MARGUERITE GUENIN NEWLON, HIS WIFE; JOSIE NEWLON BOWEN AND DEWITT BOWEN, HER HUSBAND; WALTER BRUCE NEWLON AND KATHERINE LEWIS NEWLON, HIS WIFE; WILSON E. NEWLON AND JESSIE M. NEWLON, HIS WIFE; DOROTHY SANFORD ERWIN AND R. D. ERWIN, HER HUSBAND; NEWLON C. SANFORD AND LAURA PRIDDIE SANFORD, HIS WIFE; MARION SANFORD AND MARY DRANE SANFORD, HIS WIFE; MARGUERITE FISHER, SINGLE; MINNIE R. NEWLON, WIDOW OF C. A. NEWLON; AND ANNA MCCORMICK LAKIN, WIDOW	W.V. PROPER	NOT LESS THAN 1/8	260	36
				WILLIAM V. PROPER	KATHERINE H. PROPER	LAST WILL AND TESTAMENT	M	6
				MOORE H. NEWLON AND EMMA HEINOLD NEWLON, HIS WIFE; VIRGINIA NEWLON BINGHAM AND RICHARD BINGHAM, HER HUSBAND; FRANCES MORGAN NEWLON, WIDOW; JAMES G. NEWLON AND MARGUERITE GUENIN NEWLON, HIS WIFE; JOSIE NEWLON BOWEN AND DEWITT BOWEN, HER HUSBAND; WALTER BRUCE NEWLON AND KATHERINE LEWIS NEWLON, HIS WIFE, WILSON E. NEWLON AND JESSIE M. NEWLON, HIS WIFE; DOROTHY SANFORD ERWIN AND R. D. ERWIN, HER HUSBAND; NEWLON C. SANFORD AND LAURA PRIDDIE SANFORD, HIS WIFE; MARION SANFORD AND MARY DRANE SANFORD, HIS WIFE; MARGUERITE FISHER, SINGLE; MINNIE R. NEWLON, WIDOW; AND ANNA MCCORMICK LAKIN, WIDOW	M.S. HOLT, JR	NOT LESS THAN 1/8	275	625
				KATHERINE H. PROPER, INDIVIDUALLY AND AS EXECUTRIX OF THE ESTATE OF W. V. PROPER, DECEASED	R.K. SHEFFER, DBA PRIME PETROLEUM COMPANY	ASSIGNMENT	280	694
				M.S. HOLT, JR	R.K. SHEFFER	ASSIGNMENT	279	116
				R.K. SHEFFER	R. J. SMITH, AS TRUSTEE	ASSIGNMENT	277	655
				R. J. SMITH, AS TRUSTEE	VIRONT PETROLEUM COMPANY	PARTIAL ASSIGNMENT (60%)	281	308
				R.K. SHEFFER, DBA PRIME PETROLEUM COMPANY	VIRONT PETROLEUM COMPANY	PARTIAL ASSIGNMENT (5%)	286	463
				M.S. HOLT, JR	VIRONT PETROLEUM COMPANY	ASSIGNMENT	286	317
				R.K. SHEFFER	IRA VAN TUYL	ASSIGNMENT	291	330
				IRA VAN TUYL, IN HIS OWN RIGHT, AND IRA VAN TUYL AND ELSIN VAN TUYL, PARTNERS TRADING AND DOING BUSINESS A V-T DRILLING COMPANY				
				VIRONT PETROLEUM COMPANY INC	VIRONT PETROLEUM COMPANY	PARTIAL ASSIGNMENT (32%)	312	432
				JETT PETTROLEUM COMPANY INC	JETT PETROLEUM INC	ASSIGNMENT	341	597
				JAY SHEARER, DBA RED GAS COMPANY	JAY SHEARER, DBA RED GAS COMPANY	ASSIGNMENT	545	460
				TRIAD ENERGY CORPORATION	TRIAD ENERGY CORP OF WVA, INC	ASSIGNMENT	568	5
				TRIAD HUNTER LLC	TRIAD HUNTER LLC	ASSIGNMENT	641	333
				WACO OIL & GAS CO INC	WACO OIL & GAS CO INC	ASSIGNMENT	679	476
					HG ENERGY II APPALACHIA, LLC	ASSIGNMENT	802	947
				James F. Carder, dba Jim's Oil & Gas				
					HG ENERGY II APPALACHIA LLC	NOT LESS THAN 1/8	804	95

X

X

		03-002F-0014-0001		The unknown heirs and successors of Jane Lohan	HG ENERGY II APPALACHIA, LLC	HUO- Hearing 7/30/2024, Oil & Gas Commission	Docket 364	408	
				The Unknown Heirs or Successors of Wella L. Gaston	HG ENERGY II APPALACHIA, LLC	HUO- Hearing 7/30/2024, Oil & Gas Commission	Docket 364	408	
X	93	HGII04013	03-002F-0012-0000 03-002F-0013-0000	HGII04013	Dennis Scott Reese	HG ENERGY II APPALACHIA, LLC	NOT LESS THAN 1/8	805	787
X	SRC-1.1	FK079412 FEE	p/o 02-0014-0003-0000 St. Clara Road	FK079412 FEE	DOMINION ENERGY TRANSMISSION, INC.	HG Energy II Appalachia, LLC	MINERAL DEED	434	401
				West Virginia Department of Transportation, Division of Highways	HG Energy II Appalachia, LLC	HUO- Hearing 7/30/2024, Oil & Gas Commission	Docket 364	408	

HG Energy II Appalachia, LLC

5260 Dupont Road
Parkersburg, WV 26101
(304) 420-1100 - Office
(304) 863-3172 - Fax

July 29, 2024

WV DEP
Division of Oil & Gas
Attn: Cragin Blevins
601 57th Street
Charleston, West Virginia 25304

RE: Barnes 1223 S-12H Drill Permit Revision Request – (47-⁰¹⁷~~041~~-06969)
Cove District, Doddridge County
West Virginia

*Ch #46177
7500[∞]*

RECEIVED
Office of Oil and Gas
AUG 9 2024
WV Department of
Environmental Protection

Dear Mr. Blevins -

Per our discussions, enclosed are revised forms (survey plat, mylar, WW-6B, casing schematic, AOR and WW-6A1) and a check for expedited service for the 1223 S-12H well work permit revision request. We ask the permit be modified to include additional acquired leases resulting in extended total measured depth and horizontal leg for the specified lateral.

Please let me know if you have any questions or require additional information. I can be reached at (304) 420-1119 or dwhite@hgenergyllc.com.

Very truly yours,

Diane White

Diane C. White

Enclosures

cc: Isaiah Richards – WV DEP State Inspector

08/23/2024