



---

west virginia department of environmental protection

---

Office of Oil and Gas  
601 57<sup>th</sup> Street, S.E.  
Charleston, WV 25304  
(304) 926-0450  
fax: (304) 926-0452

Harold D. Ward, Cabinet Secretary  
[www.dep.wv.gov](http://www.dep.wv.gov)

Tuesday, August 20, 2024  
PERMIT MODIFICATION APPROVAL  
Horizontal 6A / New Drill

HG ENERGY II APPALACHIA, LLC  
5260 DUPONT ROAD

PARKERSBURG, WV 26101

Re: Permit Modification Approval for Barnes 1223 S-10H  
47-017-06974-00-00

**Lateral Extension**

HG ENERGY II APPALACHIA, LLC

The Office of Oil and Gas has reviewed the attached permit modification for the above referenced permit. The attached modification has been approved and well work may begin. Please be reminded that the oil and gas inspector is to be notified twenty-four (24) hours before permitted well work is commenced.

If there are any questions, please feel free to contact me at (304) 926- 0450.

A blue ink signature of James A. Martin, written in a cursive style.

James A. Martin  
Chief

Operator's Well Number: Barnes 1223 S-10H  
Farm Name: Marilyn Barnes, et al  
U.S. WELL NUMBER: 47-017-06974-00-00  
Horizontal 6A New Drill  
Date Modification Issued: 08/20/2024

Promoting a healthy environment.

08/23/2024

STATE OF WEST VIRGINIA  
DEPARTMENT OF ENVIRONMENTAL PROTECTION, OFFICE OF OIL AND GAS  
WELL WORK PERMIT APPLICATION

1) Well Operator: HG Energy II Appalachia, L.P. 494519932 Doddridge Cove Vadis 7.5'  
Operator ID County District Quadrangle

2) Operator's Well Number: Barnes 1223 S-10H Well Pad Name: Barnes 1223

3) Farm Name/Surface Owner: Barnes Public Road Access: SLS 29

4) Elevation, current ground: 1329' Elevation, proposed post-construction: 1335'

5) Well Type (a) Gas  Oil  Underground Storage   
Other

(b) If Gas Shallow  Deep   
Horizontal

6) Existing Pad: Yes or No No

7) Proposed Target Formation(s), Depth(s), Anticipated Thickness and Expected Pressure(s):  
Marcellus at 7129' to 7202' and 73' in thickness. Anticipated pressure at 4314#.

8) Proposed Total Vertical Depth: 7200'

9) Formation at Total Vertical Depth: Marcellus

10) Proposed Total Measured Depth: 30,503'

11) Proposed Horizontal Leg Length: 22,700'

12) Approximate Fresh Water Strata Depths: 150', 220', 339'

13) Method to Determine Fresh Water Depths: Nearest offset well data, (47-017-02490, 47-017-02542, 2780)

14) Approximate Saltwater Depths: NA

15) Approximate Coal Seam Depths: 153'-158', 428'-438' (Surface Casing is being extended to cover the coal)

16) Approximate Depth to Possible Void (coal mine, karst, other): None

17) Does Proposed well location contain coal seams directly overlying or adjacent to an active mine? Yes  No

(a) If Yes, provide Mine Info: Name: \_\_\_\_\_  
Depth: \_\_\_\_\_  
Seam: \_\_\_\_\_  
Owner: \_\_\_\_\_

RECEIVED  
Office of Oil and Gas  
**AUG 9 2024**  
WV Department of  
Environmental Protection

18)

**CASING AND TUBING PROGRAM**

TYPE	Size (in)	New or Used	Grade	Weight per ft. (lb/ft)	FOOTAGE: For Drilling (ft)	INTERVALS: Left in Well (ft)	CEMENT: Fill-up (Cu. Ft.)/CTS
Conductor	20"	New	LS	94	120'	120'	Drilled In
Fresh Water	13.375"	NEW	J-55 BTC	54.5	1300'	1300' ✓	40% excess, yield = 1.18, CTS ✓
Coal							
Intermediate	9 5/8"	NEW	N-80 BTC	40	6109'	6109'	Lead - 40% excess, Tail - 0% Excess. [X]
Production	5 1/2"	NEW	P-110 HP	23	30503'	30503' ✓	Lead - Yield = 1.19, Tail - yield = 1.84. [X]
Tubing							
Liners							

Kenneth Greynolds  
 Digitally signed by: Kenneth Greynolds  
 DN: CN = Kenneth Greynolds email = Kenneth.L.Greynolds@wv.gov C = AD O = WVDEP OU = Oil and Gas  
 Date: 2024.08.02 08:33:51 -0400

TYPE	Size (in)	Wellbore Diameter (in)	Wall Thickness (in)	Burst Pressure (psi)	Anticipated Max. Internal Pressure (psi)	Cement Type	Cement Yield (cu. ft./k)
Conductor	20"	20"	.438				Drilled In
Fresh Water	13 3/8"	17.5"	.380	2730	1200	Type 1, Class A	30% excess yield = 1.20, CTS
Coal							
Intermediate	9 5/8"	12 1/4"	.395	5750		Type 1/Class A	40% excess yield = 0% Excess Lead. [X]
Production	5 1/2"	8 1/2"	.415	16240	✓ 12500	Type 1/Class A	20% excess yield = 1.19, tail yield 1.84. [X]
Tubing							
Liners							

**PACKERS**

Kind:			
Sizes:			
Depths Set:			

RECEIVED  
Office of Oil and Gas

AUG 9 2024

WV Department of  
Environmental Protection

19) Describe proposed well work, including the drilling and plugging back of any pilot hole:

Drill the vertical depth to the Marcellus at an estimated total vertical depth of approximately 7200'. Drill horizontal leg to an estimated 22,700' lateral length, 30,503' TMD. Hydraulically fracture, stimulate and be capable of producing from the Marcellus Formation. Should we encounter an unanticipated void in the coal, we will install a minimum of 20' of casing below the void but not more than 100' below the void, set a basket and grout to surface.

20) Describe fracturing/stimulating methods in detail, including anticipated max pressure and max rate:

The stimulation will be completed with multiple stages divided over the lateral length of the well. Stage spacing is dependent upon engineering design. Slickwater fracturing technique will be utilized on each stage using sand, water, and chemicals. Maximum pressure not to exceed 12,500 psi.

21) Total Area to be disturbed, including roads, stockpile area, pits, etc., (acres): 51.82 acres

22) Area to be disturbed for well pad only, less access road (acres): 6.11 acres

23) Describe centralizer placement for each casing string:

No centralizers will be used with conductor casing.  
Freshwater - Bow Spring on every other joint.  
Intermediate - Bow Spring on first 2 joints then every third joint to 100' from surface.  
Production - Run 1 spiral centralizer every 5 joints from the top of the curve to surface. Run 1 spiral centralizer every 3 joints from the 1st 5.5' long joint to the top of the curve.

RECEIVED  
Office of Oil and Gas

AUG 9 2024

24) Describe all cement additives associated with each cement type:

Conductor - N/A, Casing to be drilled in w/ Dual Rotary Rig.  
Fresh Water - "15.6 ppg Class A Neat 94#/sk40% ExcessYield=1.18 / CTS"  
Intermediate - "Lead: 15.4 ppg PNE-1 + 2.5% bwoc CaCl40% Excess / Tail: 15.9 ppg PNE-1 + 2.5% bwoc CaCl zero% Excess CTS"  
Production - "Lead: 14.6 ppg POZ:PNE-1 + 0.3% bwoc R3 + 1% bwoc EC1 + 0.75 gal/sk FP13L + 0.3% bwoc MPA17GTail: 14.8 ppg PNE-1 + 0.35% bwoc R3 + 0.75 gal/sk FP13L + 50% bwoc ASCA1 + 0.5% bwoc MPA17020% ExcessLead Yield=1.19Tail Yield=1.94CTS"

WV Department of  
Environmental Protection

25) Proposed borehole conditioning procedures:

Conductor - Ensure the hole is clean at TD.  
Fresh Water - Once casing is at setting depth, circulate a minimum of one hole volume with Fresh Water prior to pumping cement.  
Intermediate - Once casing is at setting depth, Circulate and condition mud at TD. Circulate a minimum of one hole volume prior to pumping cement.  
Production - Once on bottom/TD with casing, circulate at max allowable pump rate for at least 2x bottoms up, or until returns and pump pressures indicate the hole is clean. Circulate a minimum of one hole volume prior to pumping cement.

\*Note: Attach additional sheets as needed.



1223 S-10H  
Marcellus Shale Horizontal  
Doddridge County, WV

1223 S-10H SHL

14204616N 1720593E

Ground Elevation

1329'

1223 S-10H LP

14203384.73N 1721463.82E

Azm

160.574°

1223 S-10H BHL

14181985.47N 1729010.68E

WELLBORE DIAGRAM

HOLE

CASING

GEOLOGY

TOP

BASE

MUD

CEMENT

CENTRALIZERS

CONDITIONING

COMMENTS

RECEIVED  
 Office of Oil and Gas  
 AUG 9 2024  
 Department of  
 Environmental Protection

HOLE	CASING	GEOLOGY	TOP	BASE	MUD	CEMENT	CENTRALIZERS	CONDITIONING	COMMENTS
20"	20" 94# LS	Conductor	0	120 ✓	AIR	N/A, Casing to be drilled in w/ Dual Rotary Rig	N/A	Ensure the hole is clean at TD.	Surface casing = 0.438" wall thickness
17.5"	13-3/8" 54.5# J-55 BTC	Coal	580		AIR	15.6 ppg Class A Neat 94#/sk 40% Excess Yield=1.18 / CTS	Bow Spring on every other joint	Once casing is at setting depth, Circulate and condition at TD. Circulate a minimum of one hole volume prior to pumping cement.	Intermediate casing = 0.380" wall thickness Burst=2730 psi
12.25"	9-5/8" 40# N-80 BTC	Little Lime/Big Lime	2290/2345	2305/2401	AIR / KCL Salt Polymer	Lead: 15.4 ppg PNE-1 + 2.5% bwoc CaCl 40% Excess / Tail: 15.9 ppg PNE-1 + 2.5% bwoc CaCl zero% Excess. CTS	Bow Spring on first 2 joints then every third joint to 100' form surface	Once casing is at setting depth, Circulate and condition mud at TD. Circulate a minimum of one hole volume prior to pumping cement.	Intermediate casing = 0.395" wall thickness Burst=5750 psi
		Big Injun/Gantz	2401/2755	2495/2785					
		50 Foot/Gordon	2861/3042	2903/3122					
		Fifth	3213	3263					
		Bayard	3286	3311					
		Warren/Speechley	3594/3807	3629/3842					
		Benson / Alexander	5213 / 5474	5346 / 5604					
Intermediate	0	TVD: 6084' MD: 6109' Inc. 11 deg.							
8.75"					AIR / 9.0ppg SOBMM		Run 1 spiral centralizer every 5 joints from the top of the curve to surface.		
8.5" Curve	5-1/2" 23# P-110 HP TXP / W461	Rhinestreet	6431	6719	11.5ppg-12.5ppg SOBMM	EC1 + 0.75 gal/sk FP13L + 0.3% bwoc MPA170 Tail: 14.8 ppg PNE-1 + 0.35% bwoc R3 + 0.75 gal/sk FP13L + 50% bwoc ASCA1 + 0.5% bwoc MPA170 20% Excess Lead Yield=1.19 Tail Yield=1.94 CTS	Run 1 spiral centralizer every 3 joints from the 1st 5.5" long joint to the top of the curve.	Once on bottom/TD with casing, circulate at max allowable pump rate for at least 2x bottoms up, or until returns and pump pressures indicate the hole is clean. Circulate a minimum of one hole volume prior to pumping cement.	Production casing = 0.415" wall thickness Burst=16240 psi Note: Actual centralizer schedules may be changed due to hole conditions
		Cashaqua	6719	6864					
		Middlesex	6864	6943					
		West River	6943	7012					
		Burkett	7012	7053					
		Tully Limestone	7053	7078					
		Hamilton	7078	7129					
8.5" Lateral		TMD / TVD (Production)	30503	7200 ✓	11.5ppg-12.5ppg SOBMM				
		Onondaga	7202						

LP @ 7200' TVD / 7803' MD

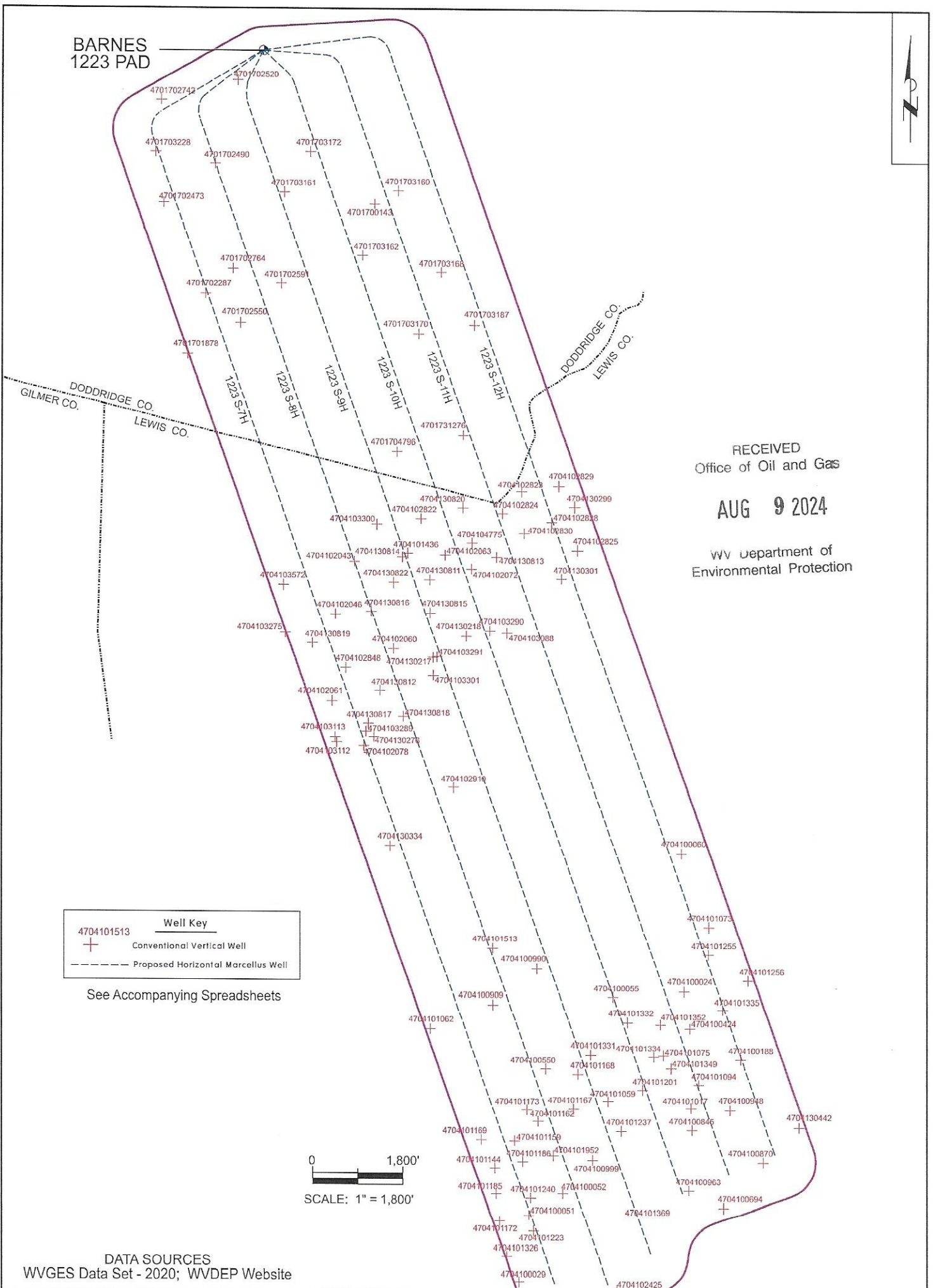
8.5" Hole - Cemented Long String  
5-1/2" 23# P-110 HP TXP / W461

±/-22700' Lateral

TD @ +/-7200' TVD  
+/-30503' MD

X=centralizers

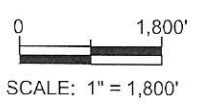
BARNES  
1223 PAD



RECEIVED  
Office of Oil and Gas  
**AUG 9 2024**  
WV Department of  
Environmental Protection

Well Key	
+	Conventional Vertical Well
- - - - -	Proposed Horizontal Marcellus Well

See Accompanying Spreadsheets



DATA SOURCES  
WVGES Data Set - 2020; WVDEP Website

Area of Review for:  
**BARNES 1223 SOUTH UNIT**

Proposed 1222 S-7H Proposed 1222 S-8H Proposed 1222 S-9H  
Proposed 1222 S-10H Proposed 1222 S-11H Proposed 1222 S-12H

Cove District, Doddridge County, W.Va.  
Freeman's Creek District, Lewis County, W.Va.

HG ENERGY, II APPALACHIA, LLC  
5260 DuPont Road, Parkersburg, WV 26101

08/23/2024



**EXISTING WELLS LOCATED WITHIN THE AREA OF REVIEW FOR:  
BARNES 1223 SOUTH UNIT AND PROPOSED WELLS S-7H, S-8H, S-9H, S-10H, S-11H, & S-12H**

CT	API	COUNTY	FARM	OPERATOR NAME	FORMATION NAME	WELL TYPE	TVD	STATUS	LATITUDE	LONGITUDE
1	4701700143	Doddridge	Chapman & Spray	McCall Drilling Co.	Price Fm & equivs	Dry w/ Oil Show	2375	PLUGGED	39.106734	-80.709358
2	4701701878	Doddridge	S L Gray	Ross & Wharton Gas Co., Inc.	Gantz	Oil and Gas	2504	PLUGGED	39.098560	-80.722490
3	4701702287	Doddridge	S L Gray	Charity Gas Inc.	Gordon	Gas	2440	ACTIVE	39.101835	-80.721236
4	4701702473	Doddridge	Geo Adrian	Deran Resources, Inc.	Price Fm & equivs	Gas	2224	ACTIVE	39.106809	-80.724153
5	4701702490	Doddridge	Lelia B Cole	Deran Resources, Inc.	Big Injun (Grnbr)	not available	-	ACTIVE	39.108889	-80.720538
6	4701702520	Doddridge	Lelia B Cole	Deran Resources, Inc.	Undf PRICE blw INJN	Gas	2515	ACTIVE	39.113444	-80.718942
7	4701702550	Doddridge	M D Bode	Daniel Farley	Undf PRICE blw INJN	Gas	2051	PLUGGED	39.100243	-80.718780
8	4701702591	Doddridge	M D Bode	Daniel Farley	Undf PRICE blw INJN	Gas	2097	PLUGGED	39.102376	-80.715915
9	4701702742	Doddridge	George Adrian	Deran Resources, Inc.	Big Injun (Grnbr)	Gas	2423	ACTIVE	39.112375	-80.724312
10	4701702764	Doddridge	R Bunten	Daniel Farley	Big Injun (Grnbr)	Dry	2290	PLUGGED	39.103197	-80.719297
11	4701703160	Doddridge	Franklin Rastle	Ross & Wharton Gas Co., Inc.	Big Injun (Grnbr)	Gas	2100	ABANDONED	39.107465	-80.707687
12	4701703161	Doddridge	Franklin Rastle	Ross & Wharton Gas Co., Inc.	Big Injun (Grnbr)	Gas	2505	ACTIVE	39.107386	-80.715685
13	4701703162	Doddridge	F Rastle et ux	Beta-Helix Energy, LLC	Big Injun (Grnbr)	Gas	2075	ACTIVE	39.103928	-80.710206
14	4701703168	Doddridge	Daniel Persiani	Beta-Helix Energy, LLC	Big Injun (Grnbr)	Gas	2190	ACTIVE	39.103010	-80.704679
15	4701703170	Doddridge	William Tatro	Beta-Helix Energy, LLC	Big Injun (Grnbr)	Gas	2215	ACTIVE	39.099648	-80.706269
16	4701703172	Doddridge	Franklin Rastle	Berry Energy, LLC	Big Injun (Grnbr)	Gas	2222	ACTIVE	39.109548	-80.713848
17	4701703187	Doddridge	William Tatro	Beta-Helix Energy, LLC	Big Injun (Grnbr)	Gas	2222	ACTIVE	39.100128	-80.702353
18	4701703228	Doddridge	Bryan & Mary Lowther	Deran Resources, Inc.	Big Injun (Grnbr)	Gas	2214	ACTIVE	39.109547	-80.724710
19	4701704796	Doddridge	Henry G & Sylvia Rastle	Eastern Gas Transmission & Storage, Inc.	not available	not available	-	PLUGGED	39.093184	-80.707802
20	4701731276	Doddridge	John Gamps/F M Schmidt	Consolidated Gas Supply Corp.	Hampshire Grp	Oil and Gas	2200	PLUGGED	39.094105	-80.703157
21	4704100024	Lewis	D D Chapman	Waco Oil & Gas Co., Inc.	Hampshire Grp	Gas	2181	ACTIVE	39.063680	-80.687721
22	4704100051	Lewis	Laura Alfred & Griggs	Eastern Gas Transmission & Storage, Inc.	Blue Monday	Oil and Gas	1881	PLUGGED	39.051493	-80.698667
23	4704100052	Lewis	Alfred & Griggs	Diversified Production, LLC	Undf PRICE blw INJN	Oil and Gas	1960	ACTIVE	39.052644	-80.696308
24	4704100055	Lewis	Lydia Starcher	Eastern Gas Transmission & Storage, Inc.	Gantz	Oil and Gas	2180	PLUGGED	39.063394	-80.692715
25	4704100060	Lewis	M H Piercy	Eastern Gas Transmission & Storage, Inc.	Big Injun (Grnbr)	Gas	2243	PLUGGED	39.071241	-80.687882
26	4704100188	Lewis	Reason Davisson	Appalachian Land & Development Co.	Price Fm & equivs	Oil w/ Gas Show	1967	ABANDONED	39.059983	-80.683795
27	4704100424	Lewis	D D Chapman	Waco Oil & Gas Co., Inc.	Big Injun (Grnbr)	Oil and Gas	1960	ACTIVE	39.061670	-80.687321
28	4704100550	Lewis	O Ireland	Waco Oil & Gas Co., Inc.	Price Fm & equivs	Oil	1992	ACTIVE	39.059494	-80.697737
29	4704100694	Lewis	Isaac Tyson	M and M Drilling	Price Fm & equivs	Oil and Gas	1730	PLUGGED	39.051862	-80.685008
30	4704100845	Lewis	Tyson-Reese Consol	Waco Oil & Gas Co., Inc.	Price Fm & equivs	Oil and Gas	1933	ACTIVE	39.056159	-80.687210
31	4704100870	Lewis	Joseph Tyson	Eastern Gas Transmission & Storage, Inc.	Price Fm & equivs	Oil and Gas	1898	PLUGGED	39.054385	-80.682225
32	4704100909	Lewis	W Richard Starcher	Term Energy Corporation	Price Fm & equivs	Oil and Gas	1812	ABANDONED	39.062972	-80.701148
33	4704100948	Lewis	Jason Bailey	Waco Oil & Gas Co., Inc.	Price Fm & equivs	Gas	1996	ACTIVE	39.057239	-80.684539

34	4704100963	Lewis	Isaac Tyson	P&C Oil & Gas, Inc.	Squaw	Oil and Gas	1946	ABANDONED	39.052805	-80.687448
35	4704100990	Lewis	D D Chapman	B & B Oil & Gas Co., Inc.	Price Fm & equivs	Gas	2010	ABANDONED	39.064951	-80.698048
36	4704100999	Lewis	Alfred & Griggs	Diversified Production, LLC	Price Fm & equivs	Oil and Gas	1979	ACTIVE	39.054514	-80.694197
37	4704101017	Lewis	Marion Tyson	Waco Oil & Gas Co., Inc.	Price Fm & equivs	Oil and Gas	1989	ACTIVE	39.057352	-80.687268
38	4704101059	Lewis	Alfred & Griggs	Diversified Production, LLC	Price Fm & equivs	Oil and Gas	1938	ACTIVE	39.057717	-80.693089
39	4704101062	Lewis	G W McMillan	McMillan Oil & Gas	not available	not available	-	NEVER DRILLED	39.061669	-80.705551
40	4704101073	Lewis	D D Chapman	R&R Oil & Gas, LLC	Price Fm & equivs	Oil and Gas	2035	ACTIVE	39.067239	-80.685979
41	4704101075	Lewis	Offa Keesucker	Jesse & Merle Shackelford	Price Fm & equivs	Gas	1978	ACTIVE	39.060219	-80.689181
42	4704101094	Lewis	D D Chapman	Term Energy Corporation	Price Fm & equivs	Oil and Gas	2100	PLUGGED	39.058619	-80.686711
43	4704101144	Lewis	A Alfred	Waco Oil & Gas Co., Inc.	Price Fm & equivs	Oil w/ Gas Show	1735	ACTIVE	39.054089	-80.701039
44	4704101159	Lewis	O W Ireland	Waco Oil & Gas Co., Inc.	Price Fm & equivs	Oil w/ Gas Show	1785	ACTIVE	39.055585	-80.699670
45	4704101162	Lewis	O W Ireland	Waco Oil & Gas Co., Inc.	Big Injun (Grnbr)	Oil w/ Gas Show	1886	ACTIVE	39.056649	-80.698014
46	4704101167	Lewis	O W Ireland	Stallworth Oil and Gas, Inc.	not available	not available	-	NEVER DRILLED	39.057319	-80.695504
47	4704101168	Lewis	O W Ireland	Waco Oil & Gas Co., Inc.	Price Fm & equivs	Oil w/ Gas Show	2176	ACTIVE	39.059202	-80.695201
48	4704101169	Lewis	A L Griggs	R&R Oil & Gas, LLC	Price Fm & equivs	Oil and Gas	1798	ACTIVE	39.055659	-80.701995
49	4704101172	Lewis	Griggs & Alfred	Diversified Production, LLC	Big Injun (Grnbr)	Oil w/ Gas Show	1925	ACTIVE	39.051147	-80.700745
50	4704101173	Lewis	Griggs & Alfred	Diversified Production, LLC	Big Lime	Oil w/ Gas Show	1904	ACTIVE	39.057287	-80.698779
51	4704101185	Lewis	A L Griggs	Waco Oil & Gas Co., Inc.	Price Fm & equivs	Oil w/ Gas Show	1885	ACTIVE	39.052644	-80.700973
52	4704101186	Lewis	Griggs & Alfred	Diversified Production, LLC	Big Injun (Grnbr)	Oil w/ Gas Show	1855	ACTIVE	39.054435	-80.699097
53	4704101201	Lewis	Griggs & Alfred	Diversified Production, LLC	Big Injun (Grnbr)	Oil	2141	ACTIVE	39.058339	-80.690678
54	4704101223	Lewis	Alfred & Griggs	Diversified Production, LLC	Big Injun (Grnbr)	Oil w/ Gas Show	2083	ACTIVE	39.050600	-80.698366
55	4704101237	Lewis	Alfred & Griggs	Diversified Production, LLC	Big Injun (Grnbr)	Oil and Gas	2140	ACTIVE	39.056102	-80.692177
56	4704101240	Lewis	Alfred & Griggs	Diversified Production, LLC	Big Injun (Grnbr)	Oil and Gas	1938	ACTIVE	39.052388	-80.698526
57	4704101255	Lewis	W D Chapman	Petroleum Promotions	Undf PRICE blw INJN	Oil and Gas	2150	PLUGGED	39.065730	-80.686020
58	4704101256	Lewis	N G Douglas	Petroleum Promotions	Undf PRICE blw INJN	Oil and Gas	2150	PLUGGED	39.064280	-80.683229
59	4704101326	Lewis	Alfred & Griggs	Diversified Production, LLC	Undf PRICE blw INJN	Oil w/ Gas Show	1951	ACTIVE	39.049200	-80.700252
60	4704101331	Lewis	L Starcher	Waco Oil & Gas Co., Inc.	Big Injun (Grnbr)	Gas	2313	ACTIVE	39.060219	-80.694305
61	4704101332	Lewis	L Starcher	Waco Oil & Gas Co., Inc.	Big Injun (Grnbr)	Oil and Gas	1959	ACTIVE	39.062000	-80.691710
62	4704101334	Lewis	D D Chapman	Waco Oil & Gas Co., Inc.	not available	not available	-	ACTIVE	39.060147	-80.689860
63	4704101335	Lewis	D D Chapman	Waco Oil & Gas Co., Inc.	Big Injun (Grnbr)	Oil	2138	ACTIVE	39.062699	-80.685029
64	4704101349	Lewis	D D Chapman	Waco Oil & Gas Co., Inc.	Big Injun (Grnbr)	Oil	2193	ACTIVE	39.059514	-80.688647
65	4704101352	Lewis	D D Chapman	Waco Oil & Gas Co., Inc.	not available	not available	-	ACTIVE	39.061891	-80.689388
66	4704101369	Lewis	C Roney	P&C Oil & Gas, Inc.	Undf PRICE blw INJN	not available	1950	ABANDONED	39.051189	-80.688952
67	4704101436	Lewis	D Rinehart Heirs	Wolf Run Oil & Gas	Fifth	Dry	2752	PLUGGED	39.087473	-80.707426
68	4704101513	Lewis	C A Bailey Hrs	Steve Duckworth Well Service	not available	not available	-	PLUGGED	39.066097	-80.701153
69	4704101952	Lewis	A L Griggs	Diversified Production, LLC	Price Fm & equivs	Oil w/ Gas Show	1921	ACTIVE	39.054778	-80.696938
70	4704102043	Lewis	S H Lowther	Eastern Gas Transmission & Storage, Inc.	Gantz	Storage	2302	ACTIVE	39.087218	-80.710800



71	4704102046	Lewis	M E Hall	Eastern Gas Transmission & Storage, Inc.	Gantz	Storage	2473	ACTIVE	39.084351	-80.712136
72	4704102060	Lewis	M E Hall	Eastern Gas Transmission & Storage, Inc.	Gantz	Storage	2267	ACTIVE	39.082421	-80.708062
73	4704102061	Lewis	M E Hall	Eastern Gas Transmission & Storage, Inc.	Gantz	Storage	2401	PLUGGED	39.079571	-80.712390
74	4704102063	Lewis	John Rastle	Eastern Gas Transmission & Storage, Inc.	Gantz	Storage	2173	ACTIVE	39.087568	-80.704427
75	4704102072	Lewis	John Rastle	Eastern Gas Transmission & Storage, Inc.	Gantz	Storage	2433	PLUGGED	39.086803	-80.702588
76	4704102078	Lewis	Frank Rastle	Eastern Gas Transmission & Storage, Inc.	Gantz	Storage	2431	PLUGGED	39.077130	-80.710161
77	4704102822	Lewis	Charles Fisher	Eastern Gas Transmission & Storage, Inc.	Berea Ss	Oil	2186	ACTIVE	39.089559	-80.706125
78	4704102823	Lewis	Mary Albers	Eastern Gas Transmission & Storage, Inc.	not available	not available	-	PLUGGED	39.091009	-80.699054
79	4704102824	Lewis	John Rastle	Eastern Gas Transmission & Storage, Inc.	Hampshire Grp	Oil w/ Gas Show	2703	PLUGGED	39.089838	-80.700392
80	4704102825	Lewis	John Rastle	Eastern Gas Transmission & Storage, Inc.	not available	not available	-	PLUGGED	39.087818	-80.695145
81	4704102828	Lewis	Conrad Rastle	Eastern Gas Transmission & Storage, Inc.	not available	Storage	-	ACTIVE	39.089365	-80.696947
82	4704102829	Lewis	Conrad Rastle	Eastern Gas Transmission & Storage, Inc.	not available	not available	-	PLUGGED	39.091299	-80.696449
83	4704102830	Lewis	Conrad Rastle	Eastern Gas Transmission & Storage, Inc.	not available	not available	-	PLUGGED	39.088770	-80.698862
84	4704102848	Lewis	Mary E Hall	Eastern Gas Transmission & Storage, Inc.	not available	not available	-	PLUGGED	39.081393	-80.711428
85	4704102910	Lewis	F Rastle	Eastern Gas Transmission & Storage, Inc.	Hampshire Grp	Observation	2691	ACTIVE	39.074858	-80.703868
86	4704103088	Lewis	M & D L Rastle	Eastern Gas Transmission & Storage, Inc.	Gantz	Storage	2574	ACTIVE	39.083306	-80.700087
87	4704103112	Lewis	Marie Rastle	Consolidated Gas Supply Corp.	Hampshire Grp	Oil	2473	PLUGGED	39.077332	-80.712063
88	4704103113	Lewis	M&C Rastle	Eastern Gas Transmission & Storage, Inc.	Gantz	Storage	2531	ACTIVE	39.077612	-80.712174
89	4704103275	Lewis	Guy Simmons	Foster Mining Co.	Big Injun (Grnbr)	Gas	2238	ABANDONED	39.083346	-80.715655
90	4704103289	Lewis	Guy Simmons Jr	Eastern Gas Transmission & Storage, Inc.	not available	not available	2488	PLUGGED	39.077912	-80.710016
91	4704103290	Lewis	Guy Simmons Jr	Eastern Gas Transmission & Storage, Inc.	not available	not available	2200	PLUGGED	39.083423	-80.701283
92	4704103291	Lewis	Guy Simmons Jr	Eastern Gas Transmission & Storage, Inc.	not available	not available	2206	PLUGGED	39.081980	-80.705003
93	4704103300	Lewis	Henry Rastle	Eastern Gas Transmission & Storage, Inc.	Gantz	Oil	2440	PLUGGED	39.089253	-80.709233
94	4704103301	Lewis	Guy Simmons	Eastern Gas Transmission & Storage, Inc.	not available	not available	3906	PLUGGED	39.080970	-80.705265
95	4704103572	Lewis	Guy Simmons	Consolidated Gas Transmission Corp.	not available	not available	-	PLUGGED	39.085933	-80.715785
96	4704104775	Lewis	Yvonne Foster/E Rastle et al	Eastern Gas Transmission & Storage, Inc.	not available	not available	-	PLUGGED	39.088230	-80.702534
97	4704130217	Lewis	Maud Faupel	South Penn Oil (S. Penn Nat. Gas)	Hampshire Grp	Oil	2174	PLUGGED	39.081972	-80.705190
98	4704130218	Lewis	Harvey Faupel	South Penn Oil (S. Penn Nat. Gas)	Hampshire Grp	Oil	2346	PLUGGED	39.083133	-80.702958
99	4704130276	Lewis	M E Hall	Hope Natural Gas Company	Hampshire Grp	Oil	2431	PLUGGED	39.077622	-80.709458
100	4704130299	Lewis	Conrad Rastle	Hope Natural Gas Company	Hampshire Grp	Gas	2191	PLUGGED	39.090184	-80.695332
101	4704130301	Lewis	John Rastle	Hope Natural Gas Company	Hampshire Grp	Oil and Gas	2306	PLUGGED	39.086268	-80.696261
102	4704130334	Lewis	A J Spray	Carnegie Natural Gas Co.	Undf PRICE blw INJN	Gas	2170	PLUGGED	39.071676	-80.708342
103	4704130442	Lewis	Reason C Davisson	UNKNOWN	Hampshire Grp	Oil	2625	PLUGGED	39.056304	-80.679693
104	4704130811	Lewis	John Rastle	Consolidated Gas Supply Corp.	not available	not available	2196	PLUGGED	39.086203	-80.705508
105	4704130812	Lewis	M E Hall	Consolidated Gas Supply Corp.	not available	not available	2148	PLUGGED	39.103169	-80.710411
106	4704130813	Lewis	John Rastle	Consolidated Gas Supply Corp.	not available	not available	2454	PLUGGED	39.087458	-80.700813
107	4704130814	Lewis	Charles Fisher	Consolidated Gas Supply Corp.	not available	not available	2358	PLUGGED	39.087673	-80.707054

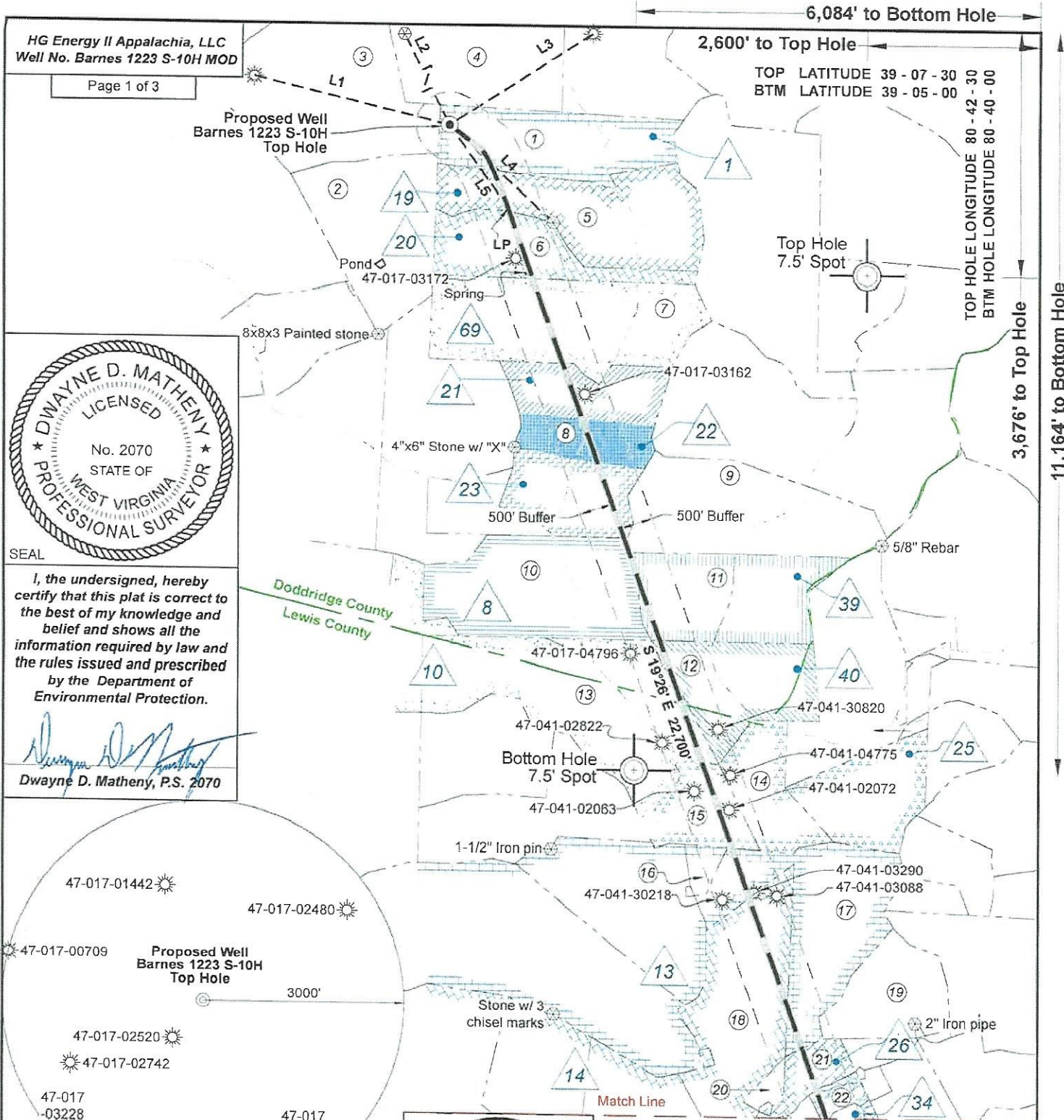
108	4704130815	Lewis	M E Hall	Consolidated Gas Supply Corp.	not available	not available	2154	PLUGGED	39.084403	-80.705487
109	4704130816	Lewis	M E Hall	Consolidated Gas Supply Corp.	not available	not available	2334	PLUGGED	39.084501	-80.709625
110	4704130817	Lewis	M E Hall	Consolidated Gas Supply Corp.	not available	not available	2390	PLUGGED	39.078347	-80.709840
111	4704130818	Lewis	M E Hall	Consolidated Gas Supply Corp.	not available	not available	2138	PLUGGED	39.078722	-80.707389
112	4704130819	Lewis	M E Hall	Consolidated Gas Supply Corp.	not available	not available	2433	PLUGGED	39.082753	-80.713750
113	4704130820	Lewis	Mary Albers	Consolidated Gas Supply Corp.	not available	not available	2426	PLUGGED	39.090147	-80.703177
114	4704130822	Lewis	Sylvester H Lowther	Consolidated Gas Supply Corp.	not available	not available	2271	PLUGGED	39.086055	-80.708045
<b>WELLS ADDED 9/7/23 ALONG WESTERN EDGE OF THE UNIT</b>										
115	4701700233	Doddridge	J Porter Woolfter	ALAMCO, Inc.	Gantz	Dry	2350	PLUGGED	39.105040	-80.726617
116	4701700809	Doddridge	J S Bailey	Deran Resources, Inc.	Gantz	Gas w/ Oil Show	2350	ACTIVE	39.111662	-80.728937
117	4701702288	Doddridge	S L Gray	Charity Gas, Inc.	Alexander	Gas	5405	ACTIVE	39.103582	-80.725182
118	4704100029	Lewis	Griggs & Alfred	Diversified Production, LLC	Big Injun (Grnbr)	Oil	2103	ACTIVE	39.047893	-80.699406
119	4704100968	Lewis	W O Ireland	Waco Oil & Gas Co., Inc.	Price Fm & equivs	Oil	1822	ACTIVE	39.056459	-80.703947
120	4704102030	Lewis	W O Ireland	Waco Oil & Gas Co., Inc.	Big Injun (Grnbr)	Oil	1764	ACTIVE	39.053998	-80.702532
121	4704130801	Lewis	W H Frost	Consolidated Gas Supply Corp.	Undf PRICE blw INJN	Gas	1940	PLUGGED	39.046877	-80.697917
<b>WELLS ADDED 3/25/24 AT SOUTH FOR EXTENDED LATERALS</b>										
122	4704100029	Lewis	Griggs & Alfred	Diversified Production, LLC	Big Injun (Grnbr)	Oil	2103	ACTIVE	39.047893	-80.699406
123	4704102425	Lewis	Albert Crislip	Diversified Production, LLC	not available	not available	-	ACTIVE	39.047458	-80.692524
124	4704130801	Lewis	W H Frost	Consolidated Gas Supply Corp.	Undf PRICE blw INJN	Gas	1940	PLUGGED	39.046877	-80.697917

SOURCE: WVGES DATASET (2020) and WVDEP WEBSITE AND FIELD SURVEYS

UPDATED 3/25/2024

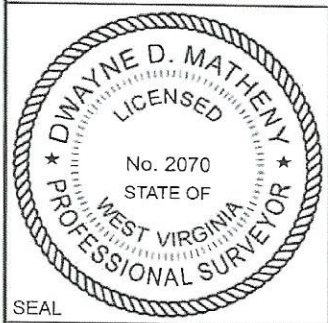
YELLOW DENOTES WELL WITH TVD > 4,500' GREEN DENOTES SURVEYED WELLS

RECEIVED  
 Office of Oil and Gas  
 AUG 9 2024  
 WV Department of  
 Environmental Protection



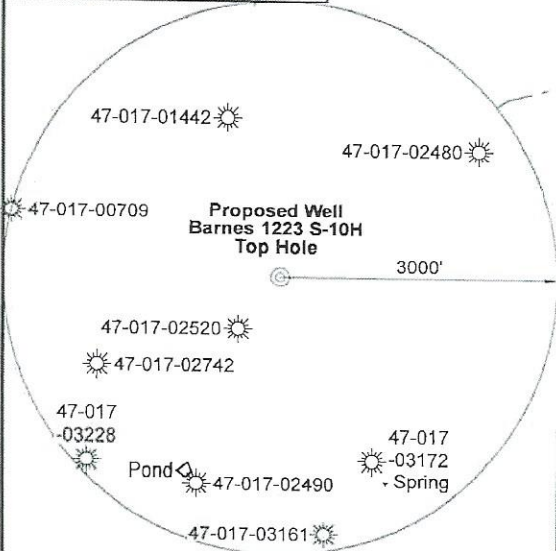
HG Energy II Appalachia, LLC  
Well No. Barnes 1223 S-10H MOD  
Page 1 of 3

TOP LATITUDE 39 - 07 - 30  
BTM LATITUDE 39 - 05 - 00



I, the undersigned, hereby certify that this plat is correct to the best of my knowledge and belief and shows all the information required by law and the rules issued and prescribed by the Department of Environmental Protection.

*Dwayne D. Matheny*  
Dwayne D. Matheny, P.S. 2070



Note: 0 water wells, 0 cistern, and 0 pond were found within 1500' of proposed well. No occupied dwellings or buildings 2,500 square feet or larger used to house or shelter dairy cattle or poultry husbandry are located within 625' of the center of the well pad.



Tag	Bearing	Dist.	Description
L1	S 76°16' E	3,001.6'	47-017-00709
L2	S 26°48' E	2,309.7'	5/8" Rebar
L3	S 56°46' W	2,555.6'	47-041-02480
L4	N 47°00' W	2,120.7'	1/2" Rebar @ fence corner
L5	S 35°16' E	1,508.1'	Landing Point

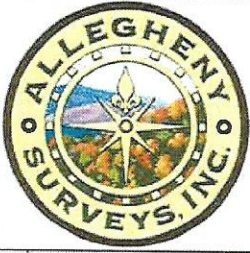
FILE NO: 171-12-30-FC-22  
DRAWING NO: Barnes 1223 S-10H Well Plat  
SCALE: 1" = 2000'  
MINIMUM DEGREE OF ACCURACY: Submeter  
PROVEN SOURCE OF ELEVATION: CORS, Bridgeport, WV

**STATE OF WEST VIRGINIA**  
DEPARTMENT OF ENVIRONMENTAL PROTECTION  
**OIL AND GAS DIVISION**

DATE: July 29 20 24  
OPERATOR'S WELL NO. Barnes 1223 S-10H  
API WELL NO  
47 - 017 - 06974  
STATE COUNTY PERMIT

WELL TYPE:  OIL  GAS  LIQUID INJECTION  WASTE DISPOSAL  
(IF GAS) PRODUCTION:  STORAGE  DEEP  SHALLOW  
LOCATION: ELEVATION: 1,330' WATERSHED: Fink Creek QUADRANGLE: Vadis  
DISTRICT: Cove COUNTY: Doddridge  
SURFACE OWNER: Marilyn Barnes, et al ACREAGE: 08/23/2024  
ROYALTY OWNER: Carolyn Rastle Bass, et al LEASE NO: ACREAGE: 123  
PROPOSED WORK:  DRILL  CONVERT  DRILL DEEPER  FRACTURE OR STIMULATE  PLUG OFF OLD FORMATION  
 PERFORATE NEW FORMATION  OTHER PHYSICAL CHANGE IN WELL (SPECIFY) BH & LP MOD 7,200' TVD  
 PLUG AND ABANDON  CLEAN OUT AND REPLUG TARGET FORMATION: Marcellus Shale ESTIMATED DEPTH: 39,503' MD

WELL OPERATOR: HG Energy II Appalachia, LLC DESIGNATED AGENT: Diane C. White  
ADDRESS: 5260 Dupont Road ADDRESS: 5260 Dupont Road  
Parkersburg, WV 26101 Parkersburg, WV 26101



Page 1  
Match Line

5/8" Rebar

12"x4"x8" Stone

47-041-00055

47-041-01332

47-041-01334

47-041-01201

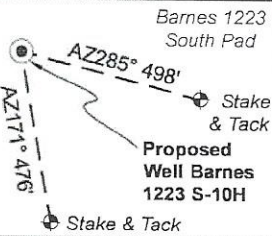
15'x15'± Rock on top of knob

See Detail 1

5/8" Rebar w/ yellow plastic cap

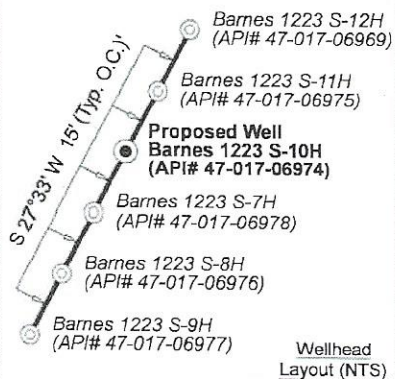
Barnes 1223 S-10H Bottom Hole

**Well Location References  
Not to Scale**



**Legend**

- Proposed gas well
- Well Reference, as noted
- Monument, as noted
- Existing Well, as noted
- Existing Plugged Well, as noted
- Digitized Well, as noted
- Creek or Drain
- Existing Road
- Surface boundary (approx.)



West Virginia Coordinate System of 1927, North Zone based upon Differential GPS Measurements.	UTM Zone 17, NAD 1983 Plat orientation and corner and well references are based upon the grid north meridian. Well location references are based upon the magnetic meridian.	
Notes: Well No. Van Wie 1223 S-10H WVCS 1927, North Zone Top Hole Coordinates Lat: 39°06'53.66" Lon: 80°43'03.00" Landing Point Coordinates Lat: 39°06'41.45" Lon: 80°42'52.00" Bottom Hole Coordinates Lat: 39°03'09.61" Lon: 80°41'17.16"	Notes: Well No. Van Wie 1223 S-10H UTM NAD 1983 (USSF) Top Hole Coordinates N: 14,204,616.00' E: 1,720,593.00' Landing Point Coordinates N: 14,203,384.73' E: 1,721,463.82' Bottom Hole Coordinates N: 14,181,985.47' E: 1,729,010.68'	Notes: Well No. Van Wie 1223 S-10H UTM NAD 1983 (Meters) Top Hole Coordinates N: 4,329,575.616m E: 524,437.795m Landing Point Coordinates N: 4,329,200.324m E: 524,703.222m Bottom Hole Coordinates N: 4,322,677.817m E: 527,003.509m

FILE NO: 171-12-30-FC-22  
DRAWING NO: Barnes 1223 S-10H Well Plat  
SCALE: 1" = 2000'  
MINIMUM DEGREE OF ACCURACY: Submeter  
PROVEN SOURCE OF ELEVATION: CORS, Bridgeport, WV

**STATE OF WEST VIRGINIA  
DEPARTMENT OF ENVIRONMENTAL PROTECTION  
OIL AND GAS DIVISION**

DATE: July 29 20 24  
OPERATOR'S WELL NO. Barnes 1223 S-10H  
API WELL NO  
47 - 017 - 06974  
STATE COUNTY PERMIT

WELL TYPE:  OIL  GAS  LIQUID INJECTION  WASTE DISPOSAL  
(IF GAS) PRODUCTION:  STORAGE  DEEP  SHALLOW

LOCATION: ELEVATION: 1,330' WATERSHED: Fink Creek QUADRANGLE: Vadis  
DISTRICT: Cove COUNTY: Doddridge  
SURFACE OWNER: Marilyn Barnes, et al ACREAGE: 123  
ROYALTY OWNER: Carolyn Rastie Bass, et al LEASE NO: \_\_\_\_\_ ACREAGE: 123  
PROPOSED WORK:  DRILL  CONVERT  DRILL DEEPER  FRACTURE OR STIMULATE  PLUG OFF OLD FORMATION  
 PERFORATE NEW FORMATION  OTHER PHYSICAL CHANGE IN WELL (SPECIFY) \_\_\_\_\_ BH & LP MOD  
 PLUG AND ABANDON  CLEAN OUT AND REPLUG TARGET FORMATION: Marcellus Shale ESTIMATED DEPTH: 7,200' TVD  
30,503' MD

WELL OPERATOR: HG Energy II Appalachia, LLC DESIGNATED AGENT: Diane C. White  
ADDRESS: 5260 Dupont Road ADDRESS: 5260 Dupont Road  
Parkersburg, WV 26101 Parkersburg, WV 26101

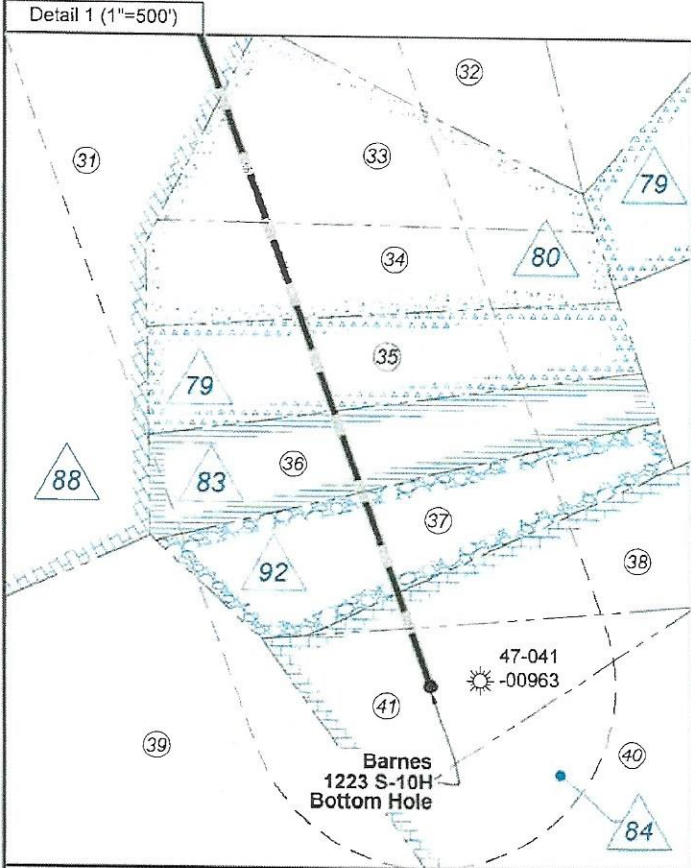
08/23/2024



ID	Lease
1	Carolyn Rastle Bass, et al
8	HG Energy II Appalachia, LLC
10	HG Energy II Appalachia, LLC
13	William H. Hall & Mary E. Hall
14	Frank Rastle, et ux, et al
19	Carolyn Rastle Bass, et al
20	Maxine Cole Rastle, et al
21	Myrtle M. Spray, et al
22	C. Spray, et al
23	H.C. Spray, et al
25	HG Energy II Appalachia, LLC
26	J.R. & Florence Hurst
34	Dollie Hardman, et vir, et al
35	C.W. Radcliff, et al
39	HG Energy II Appalachia, LLC
40	HG Energy II Appalachia, LLC
41	Lydia Startcher, et al
68	Albert & Margaret Ralston, et al
69	Ivah R. Schmidt, et vir, et al
79	Jason G. & Minnie E. Bailey
80	Maudie Tyson, et al
83	Hundred Resources, Inc., et al
84	Hundred Resources, Inc., et al
88	Andrew Edmiston, Jr., et ux, et al
92	Hundred Resources, Inc., et al

Doddridge Co. (Cove Dist.)				
No.	TM / Par	Owner	Bk / Pg	Ac.
1	10 / 16	Marilyn Barnes, et al	W28 / 552	76.10
2	9 / 27	Willard L. Fuller, III	215 / 149	89.00
3	9 / 20	Clyde W. Marsh, et al	W36 / 152	149.00
4	9 / 21	Carolyn R. Bass, et al	239 / 151	120.00
5	10 / 17	Marilyn Barnes, et al	W28 / 552	90.00
6	9 / 28	Maxine S. Rastle	A58 / 287	53.63
7	14 / 1	Maxine S. Rastle	A58 / 287	129.04
8	13 / 17	Maxine S. Rastle	A58 / 287	116.18
9	14 / 3	Keith A. Tatro	W56 / 172	101.37
10	13 / 18	Kevin M. Kearner	251 / 298	100.00
11	14 / 4	Kevin M. Kearney	266 / 410	44.30
12	14 / 5	William & Susan Carlson	216 / 99	29.39

Lewis Co. (Freemans Creek Dist.)				
No.	TM / Par	Owner	Bk / Pg	Ac.
13	1D / 5	Henry G & Sylvia Rastle	398 / 311	142.00
14	1D / 10	Yvonne R. Foster & Alice Taylor	745 / 851	41.30
15	1D / 9	Yvonne R. Foster & Alice Taylor	745 / 851	32.60
16	1D / 8	Berkley T. & Judith E. Cook	617 / 195	6.00
17	1D / 16	Maxine S. Cole Rastle	W55 / 570	99.40
18	1E / 28	Thomas R. Riley, et al	577 / 553	96.80
19	1E / 51	Stephen C. Schertz	778 / 688	46.00
20	1E / 27	Okey J. Smith	569 / 491	5.50
21	1E / 29	Robert E. & Ann M. White	403 / 690	16.73
22	1E / 40.1	Joseph W. & Elizabeth A. Crofford	543 / 168	9.50
23	1E / 32	Danny C. & Rose M. Parker	563 / 692	3.70
24	1E / 38	Fonda W. Simmons Trust	629 / 66	2.70
25	1E / 40	Patricia Hathaway & Peter Lenard	W62 / 888	10.78
26	1E / 45	Patricia Hathaway & Peter Lenard	W62 / 888	16.78
27	1E / 44	James R. Radcliff	595 / 26	231.00
28	1E / 43	Danny C. & Timothy J. Kretzmer, et al	W13 / 195	113.00
29	2E / 22	William M. & William B. Vavrek	642 / 361	58.62
30	2F / 110	Michael Stefano	684 / 230	5.81
31	1F / 52	Edwin A. Alfred	562 / 309	135.25
32	2F / 1	Cornerstone Rentals, LLC, et al	787 / 418	10.00
33	2F / 4	Dennis S. Reese, et al	W16 / 256	8.50
34	2F / 5	Franklin E. & Myrtle J. Smarr	349 / 252	7.00
35	2F / 6	Kathryn P. Carpenter, et al	559 / 414	7.00
36	2F / 7	Hundres Resources, Inc.	736 / 159	7.00
37	2F / 8	Hundres Resources, Inc.	736 / 159	7.00
38	2F / 10	Hundres Resources, Inc.	736 / 159	7.00
39	1F / 53	WV Minerals, Inc.	679 / 274	189.34
40	2F / 18	Hundres Resources, Inc.	736 / 159	30.00
41	2F / 11	Hundres Resources, Inc.	736 / 159	7.00



FILE NO: 171-12-30-FC-22  
DRAWING NO: Barnes 1223 S-10H Well Plat  
SCALE: 1" = 2000'  
MINIMUM DEGREE OF ACCURACY: Submeter  
PROVEN SOURCE OF ELEVATION: CORS, Bridgeport, WV

**STATE OF WEST VIRGINIA**  
DEPARTMENT OF ENVIRONMENTAL PROTECTION  
**OIL AND GAS DIVISION**

DATE: July 29 20 24  
OPERATOR'S WELL NO. Barnes 1223 S-10H  
API WELL NO  
47 - 017 - 06974  
STATE COUNTY PERMIT

WELL TYPE:  OIL  GAS  LIQUID INJECTION  WASTE DISPOSAL  
(IF GAS) PRODUCTION:  STORAGE  DEEP  SHALLOW

LOCATION: ELEVATION: 1,330' WATERSHED: Fink Creek QUADRANGLE: Vadis  
DISTRICT: Cove COUNTY: Doddridge  
SURFACE OWNER: Marilyn Barnes, et al ACREAGE: 28.10  
ROYALTY OWNER: Carolyn Rastle Bass, et al LEASE NO: ACREAGE: 123  
PROPOSED WORK:  DRILL  CONVERT  DRILL DEEPER  FRACTURE OR STIMULATE  PLUG OFF OLD FORMATION  
 PERFORATE NEW FORMATION  OTHER PHYSICAL CHANGE IN WELL (SPECIFY) BH & LP MOD  
 PLUG AND ABANDON  CLEAN OUT AND REPLUG TARGET FORMATION: Marcellus Shale ESTIMATED DEPTH: 7,200' TVD 30,503' MD

WELL OPERATOR: HG Energy II Appalachia, LLC DESIGNATED AGENT: Diane C. White  
ADDRESS: 5260 Dupont Road ADDRESS: 5260 Dupont Road  
Parkersburg, WV 26101 Parkersburg, WV 26101

**INFORMATION SUPPLIED UNDER WEST VIRGINIA CODE  
Chapter 22, Article 6A, Section 5(a)(5)  
IN LIEU OF FILING LEASE(S) AND OTHER CONTINUING CONTRACT(S)**

Under the oath required to make the verification on page 1 of this Notice and Application, I depose and say that I am the person who signed the Notice and Application for the Applicant, and that –

- (1) the tract of land is the same tract described in this Application, partly or wholly depicted in the accompanying plat, and described in the Construction and Reclamation Plan;
- (2) the parties and recordation data (if recorded) for lease(s) or other continuing contract(s) by which the Applicant claims the right to extract, produce or market the oil or gas are as follows:

Lease Name or Number	Grantor, Lessor, etc.	Grantee, Lessee, etc.	Royalty	Book/Page
-------------------------	-----------------------	-----------------------	---------	-----------

\*\*See Attached Sheets\*\*

RECEIVED  
Office of Oil and Gas  
**AUG 9 2024**  
WV Department of  
Environmental Protection

~~Co-Tenancy utilization - At least 75% of the royalty owners have consented to the lawful use or development of the natural gas mineral property on the tract. The interests of the remaining co-tenants will be secured pursuant to the Co-Tenancy Act~~  
Horizontal Well Unit Utilization - Subject to unitization filing with the WV Oil and Gas Conservation Commission

**Acknowledgement of Possible Permitting/Approval  
In Addition to the Office of Oil and Gas**

The permit applicant for the proposed well work addressed in this application hereby acknowledges the possibility of the need for permits and/or approvals from local, state, or federal entities in addition to the DEP, Office of Oil and Gas, including but not limited to the following:

- WV Division of Water and Waste Management
- WV Division of Natural Resources WV Division of Highways
- U.S. Army Corps of Engineers
- U.S. Fish and Wildlife Service
- County Floodplain Coordinator

The applicant further acknowledges that any Office of Oil and Gas permit in no way overrides, replaces, or nullifies the need for other permits/approvals that may be necessary and further affirms that all needed permits/approvals should be acquired from the appropriate authority before the affected activity is initiated.

Well Operator: HG Energy II Appalachia, LLC  
 By: Diane White *Diane White*  
 Its: Agent

**HG Energy II Appalachia, LLC  
Barnes 1223 S-10H Lease Chain**

1223S Tract	LEGACY LEASE NUMBER	TAX MAP	LEASE NUMBER	GRANTOR/LESSOR	GRANTEE/LESSEE	ROYALTY	DEED BOOK	PAGE	
X	1	HGII02150 et al	02-0010-0016-0000	HGII02150 et al	Carolyn Rastle Bass	HG ENERGY II APPALACHIA LLC	NOT LESS THAN 1/8	520	529
					Marilyn Rastle Barnes	HG ENERGY II APPALACHIA LLC	NOT LESS THAN 1/8	520	527
					Richard E. Spracklen	HG ENERGY II APPALACHIA LLC	NOT LESS THAN 1/8	521	214
					Chad W. Johnson	HG ENERGY II APPALACHIA LLC	NOT LESS THAN 1/8	500	298
					James J. Cava, Jr.	HG ENERGY II APPALACHIA LLC	NOT LESS THAN 1/8	501	398
X	8	FK080709 FEE	02-0013-0018-0000	FK080709 FEE	DOMINION ENERGY TRANSMISSION, INC.	HG Energy II Appalachia, LLC	MINERAL DEED	434	401
X	10	FK079326 FEE	02-0013-0009-0000 02-0014-0006-0000 03-001D-0005-0000	FK079326 FEE	DOMINION ENERGY TRANSMISSION, INC.	HG Energy II Appalachia, LLC	MINERAL DEED	434	401
X	13	FK054822 FK079060 FEE	03-001D-0016-0000 03-001D-0008-0000 03-001D-0008-0001 03-001D-0007-0000 03-001E-0012-0000	Q101029000	WILLIAM H. HALL AND MARY E. HALL	SOUTH PENN OIL COMPANY	NOT LESS THAN 1/8	24	364
					SOUTH PENN OIL COMPANY	SOUTH PENN NATURAL GAS CO	ASSIGNMENT	156	570
					SOUTH PENN NATURAL GAS CO	HOPE NATURAL GAS COMPANY	ASSIGNMENT	106	494
					HOPE NATURAL GAS COMPANY	CONSOLIDATED GAS SUPPLY CORPORATION	CONFIRMATORY DEED	294	89
					CONSOLIDATED GAS SUPPLY CORPORATION	CONSOLIDATED GAS TRANSMISSION CORPORATION	ASSIGNMENT	425	127
					CONSOLIDATED GAS TRANSMISSION CORPORATION	CNG TRANSMISSION CORPORATION	MERGER/NAME CHANGE	51	795
					CNG TRANSMISSION CORPORATION	DOMINION TRANSMISSION, INC.	MERGER/NAME CHANGE	58	362
					DOMINION TRANSMISSION, INC.	CNX GAS COMPANY LLC	MEMORANDUM OF FARMOUT AGREEMENT	672	154
					CNX GAS COMPANY LLC	NOBLE ENERGY, INC.	LIMITED PARTIAL ASSIGNMENT (50%)	684	57
					DOMINION TRANSMISSION, INC.	CNX GAS COMPANY LLC AND NOBLE ENERGY, INC.	PARTIAL ASSIGNMENT (32%)	712	848
					CNX GAS COMPANY LLC	NOBLE ENERGY, INC.	ASSIGNMENT	717	1
					NOBLE ENERGY, INC.	HG ENERGY II APPALACHIA, LLC	ASSIGNMENT	722	170
					DOMINON TRANSMISSION, INC.	DOMINION ENERGY TRANSMISSION, INC.	MERGER/NAME CHANGE	WVSOS	
					DOMINION ENERGY TRANSMISSION, INC.	HG ENERGY II APPALACHIA, LLC	SECOND AMENDMENT TO MEMORANDUM OF FARMOUT AGREEMENT	723	499
					DOMINION ENERGY TRANSMISSION, INC.	HG ENERGY II APPALACHIA, LLC	THIRD AMENDMENT TO MEMORANDUM OF FARMOUT AGREEMENT	734	558
DOMINION ENERGY TRANSMISSION, INC.	HG ENERGY II APPALACHIA, LLC	ASSIGNMENT (68%)	736	220					
X	14	FK054835 FK080833 FEE	03-001E-0011-0000 03-001E-0013-0000 03-001E-0014-0000 03-001E-0026-0000 03-001E-0028-0000	Q101032000	FRANK RASTLE AND MARGARET A. RASTLE, HIS WIFE; AND M. J. LOVETT	A. F. GUM AND G. B. DETERMAN	NOT LESS THAN 1/8	92	531
					A. F. GUM	G. B. DETERMAN	ASSIGNMENT	95	576
					G. B. DETERMAN	LOUIS BENNETT AND W. H. AHNER	ASSIGNMENT	95	576
					JOHNSON C. MCKINLEY AND HUNTER M. BENNETT, EXECUTORS OF THE LAST WILL AND TESTAMENT OF LOUIS BENNETT, SR. DECEASED	AGRA B. MCKINLEY	CONVEYANCE/ASSIGNMENT	1	13
					W.H. AHNER AND MYRTLE AHNER, HIS WIFE	ERNEST G. SMITH, IN TRUST	CONVEYANCE/ASSIGNMENT	15	460
					W.H. AHNER AND MYRTLE AHNER, HIS WIFE; AND ERNEST G. SMITH TRUSTEE	AGRA B. MCKINLEY	CONVEYANCE/ASSIGNMENT	117	504
					HOMER THOMPSON AND RACHAEL THOMPSON, HIS WIFE	FRANK RASTLE	CONVEYANCE/ASSIGNMENT	100	329
					FRANK RASTLE AND MARGARET A. RASTLE, HIS WIFE	AGRA B. MCKINLEY	CONVEYANCE/ASSIGNMENT	118	135
					AGRA B MCKINLEY AND JOHNSON C. MCKINLEY, HER HUSBAND	ROY TALBOTT	CONVEYANCE/ASSIGNMENT	125	428
					MARY TALBOTT IN HER OWN RIGHT AND AS ADMINISTRATRIX OF THE ESTATE OF ROY TALBOTT, DECEASED	C. M. BENNETT, THOMAS J. GILLOOLY AND W. C. BLACK, PARTNERS DBA C. M. BENNETT AND COMPANY	CONVEYANCE/ASSIGNMENT	125	429
					C. M. BENNETT, THOMAS J. GILLOOLY AND W. C. BLACK, PARTNERS DBA C. M. BENNETT AND COMPANY	GILCO OIL & GAS COMPANY	ASSIGNMENT	129	46
					GILCO OIL & GAS COMPANY	SOUTH PENN OIL COMPANY	ASSIGNMENT	138	174
					SOUTH PENN OIL COMPANY	SOUTH PENN NATURAL GAS CO	ASSIGNMENT	156	570

		03-001E-0028-0001		SOUTH PENN NATURAL GAS CO	HOPE NATURAL GAS COMPANY	ASSIGNMENT	166	494	
				HOPE NATURAL GAS COMPANY	CONSOLIDATED GAS SUPPLY CORPORATION	CONFIRMATORY DEED	294	89	
				CONSOLIDATED GAS SUPPLY CORPORATION	CONSOLIDATED GAS TRANSMISSION CORPORATION	ASSIGNMENT	425	127	
				CONSOLIDATED GAS TRANSMISSION CORPORATION	CNG TRANSMISSION CORPORATION	MERGER/NAME CHANGE	51	795	
				CNG TRANSMISSION CORPORATION	DOMINION TRANSMISSION, INC.	MERGER/NAME CHANGE	9	628	
				DOMINION TRANSMISSION, INC.	CNX GAS COMPANY LLC	MEMORANDUM OF FARMOUT AGREEMENT	672	154	
				CNX GAS COMPANY LLC	NOBLE ENERGY, INC.	LIMITED PARTIAL ASSIGNMENT (50%)	684	57	
				DOMINION TRANSMISSION, INC.	CNX GAS COMPANY LLC AND NOBLE ENERGY, INC.	PARTIAL ASSIGNMENT (32%)	712	848	
				CNX GAS COMPANY LLC	NOBLE ENERGY, INC.	ASSIGNMENT	717	1	
				NOBLE ENERGY, INC.	HG ENERGY II APPALACHIA, LLC	ASSIGNMENT	722	170	
				DOMINON TRANSMISSION, INC.	DOMINION ENERGY TRANSMISSION, INC.	MERGER/NAME CHANGE	WVSOS		
				DOMINION ENERGY TRANSMISSION, INC.	HG ENERGY II APPALACHIA, LLC	SECOND AMENDMENT TO MEMORANDUM OF FARMOUT AGREEMENT	723	499	
				DOMINION ENERGY TRANSMISSION, INC.	HG ENERGY II APPALACHIA, LLC	THIRD AMENDMENT TO MEMORANDUM OF FARMOUT AGREEMENT	734	558	
				DOMINION ENERGY TRANSMISSION, INC.	HG ENERGY II APPALACHIA, LLC	ASSIGNMENT (68%)	736	220	
X	19	HGII03860 ET AL	02-0010-0017-0000	HGII03860 ET AL	Carolyn Rastle Bass	HG ENERGY II APPALACHIA LLC	NOT LESS THAN 1/8	520	531
					Marilyn Rastle Barnes	HG ENERGY II APPALACHIA LLC	NOT LESS THAN 1/8	520	533
					Maxine Cole Rastle aka Maxine S. Rastle			526	409
						HG ENERGY II APPALACHIA LLC	NOT LESS THAN 1/8		
					Mike Ross, Inc.	HG ENERGY II APPALACHIA LLC	NOT LESS THAN 1/8	512	216
					Thomas Edward Rastle	HG ENERGY II APPALACHIA LLC	NOT LESS THAN 1/8	513	132
					Michael Joseph Riley	HG ENERGY II APPALACHIA LLC	COTENENCY AFFIDAVIT	68	90
					Thomas Robert Riley	HG ENERGY II APPALACHIA LLC	COTENENCY AFFIDAVIT	68	90
					Patricia Ann Riley fka Patricia Ann Martin	HG ENERGY II APPALACHIA LLC	COTENENCY AFFIDAVIT	68	90
					Yvonne Rastle Foster	HG ENERGY II APPALACHIA LLC	NOT LESS THAN 1/8	514	714
					Alice Rastle Taylor	HG ENERGY II APPALACHIA LLC	NOT LESS THAN 1/8	514	706
					Ridgewood Development LLC (Samuel Hammett; managing member)			68	90
						HG ENERGY II APPALACHIA LLC	COTENENCY AFFIDAVIT		
					Armstrong Land Management (Richard Armstrong; President)	HG ENERGY II APPALACHIA LLC	COTENENCY AFFIDAVIT	68	90
					Henry G. Rastle	HG ENERGY II APPALACHIA LLC	NOT LESS THAN 1/8	516	21
					The Unknown Heirs or Successors of Max Albers	HG ENERGY II APPALACHIA LLC	COTENENCY AFFIDAVIT	68	90
					The Unknown Heirs or Successors of Gerald Albers	HG ENERGY II APPALACHIA LLC	COTENENCY AFFIDAVIT	68	90
					The Unknown Heirs or Successors of Nancy Albers	HG ENERGY II APPALACHIA LLC	COTENENCY AFFIDAVIT	68	90
					Josephine Sanchez	HG ENERGY II APPALACHIA LLC	COTENENCY AFFIDAVIT	68	90
					John J. Battin, Jr.	HG ENERGY II APPALACHIA LLC	COTENENCY AFFIDAVIT	68	90
					Jamison M. R. Battin aka Jamison Battin	HG ENERGY II APPALACHIA LLC	COTENENCY AFFIDAVIT	68	90
					Jennifer M. Battin	HG ENERGY II APPALACHIA LLC	COTENENCY AFFIDAVIT	68	90
					MYRTLE M. SPRAY, WIDOW, H. C. SPRAY, WIDOWER; JOHN E. SPRAY AND ALICE SPRAY, HIS WIFE; RICHARD L. SPRAY AND ROSE LEE SPRAY, HIS WIFE; SYBIL ROBINSON AND WILLIAM N. ROBERTSON, HER HUSBAND; GRACE WALTERS AND G. E. WALTERS, HER HUSBAND; VIOLET POSTLE; JEAN SPRAY, SINGLE, G. C. SPRAY AND LELIE SPRAY, HIS WIFE; A. J. SPRAY AND ADELIN S. SPRAY, HIS WIFE; LULU SCHMIDT, WIDOW; AND E. W. HOLLAND AND AXIE HOLLAND, HIS WIFE	HOPE NATURAL GAS COMPANY	NOT LESS THAN 1/8	58	370
					HOPE NATURAL GAS COMPANY	CONSOLIDATED GAS SUPPLY CORPORATION	CONFIRMATORY DEED	143	345
					CONSOLIDATED GAS SUPPLY CORPORATION	CONSOLIDATED GAS TRANSMISSION CORPORATION	ASSIGNMENT	135	583
					CONSOLIDATED GAS TRANSMISSION CORPORATION	CNG TRANSMISSION CORPORATION	MERGER/NAME CHANGE	328	398
					CNG TRANSMISSION CORPORATION	DOMINION TRANSMISSION, INC.	MERGER/NAME CHANGE	WVSOS	
					DOMINION TRANSMISSION, INC.	CNX GAS COMPANY LLC	MEMORANDUM OF FARMOUT AGREEMENT	323	187
					CNX GAS COMPANY LLC	NOBLE ENERGY, INC.	LIMITED PARTIAL ASSIGNMENT (50%)	337	446
					DOMINION TRANSMISSION INC	CNX GAS COMPANY AND NOBLE ENERGY INC	PARTIAL ASSIGNMENT (32%)	424	234
					CNX GAS COMPANY LLC	NOBLE ENERGY, INC.	ASSIGNMENT	377	212
					NOBLE ENERGY, INC.	HG ENERGY II APPALACHIA LLC	ASSIGNMENT	449	286
					DOMINION TRANSMISSION INC	DOMINION ENERGY TRANSMISSION, INC.	MERGER/NAME CHANGE	WVSOS	
X	21	FK066138	p/o 02-0013-0017-0000	Q100566000					



				DOMINION ENERGY TRANSMISSION, INC.	HG ENERGY II APPALACHIA LLC	SECOND AMENDMENT TO MEMORANDUM OF FARMOUT AGREEMENT	454	483	
				DOMINION ENERGY TRANSMISSION, INC.	HG ENERGY II APPALACHIA LLC	THIRD AMENDMENT TO MEMORANDUM OF FARMOUT AGREEMENT	475	576	
				DOMINION ENERGY TRANSMISSION, INC.	HG ENERGY II APPALACHIA LLC	ASSIGNMENT	479	1	
X	22	FK066137	p/o02-0013-0017-0000	Q100991000	FLORENCE I. CHAPMAN AND D. D. CHAPMAN, HER HUSBAND; H. C. SPRAY, WIDOWER; MYRTLE M. SPRAY, WIDOW; JOHN E. SPRAY AND ALICE L. SPRAY, HIS WIFE; RICHARD L. SPRAY AND ROSE LEE SPRAY, HIS WIFE; SYBIL ROBERTSON AND WILLIAM N. ROBERTSON, HER HUSBAND; GRACE WALTERS AND G. E. WALTERS, HER HUSBAND; VIOLET POSTLE; JEAN SPRAY, SINGLE; G. C. SPRAY AND LELIE SPRAY, HIS WIFE; A. J. SPRAY AND ADELINE S. SPRAY, HIS WIFE; LULU SCHMIDT, WIDOW; E.W. HOLLAND AND AXIE HOLLAND, HIS WIFE	HOPE NATURAL GAS COMPANY	NOT LESS THAN 1/8	58	363
					HOPE NATURAL GAS COMPANY	CONSOLIDATED GAS SUPPLY CORPORATION	CONFIRMATORY DEED	143	345
					CONSOLIDATED GAS SUPPLY CORPORATION	CONSOLIDATED GAS TRANSMISSION CORPORATION	ASSIGNMENT	135	583
					CONSOLIDATED GAS TRANSMISSION CORPORATION	CNG TRANSMISSION CORPORATION	MERGER/NAME CHANGE	328	398
					CNG TRANSMISSION CORPORATION	DOMINION TRANSMISSION, INC.	MERGER/NAME CHANGE	332	570
					DOMINION TRANSMISSION, INC.	CNX GAS COMPANY LLC	MEMORANDUM OF FARMOUT AGREEMENT	323	187
					CNX GAS COMPANY LLC	NOBLE ENERGY, INC.	LIMITED PARTIAL ASSIGNMENT (50%)	337	446
					DOMINION TRANSMISSION INC	CNX GAS COMPANY AND NOBLE ENERGY INC	PARTIAL ASSIGNMENT (32%)	424	234
					CNX GAS COMPANY LLC	NOBLE ENERGY, INC.	ASSIGNMENT	377	212
					NOBLE ENERGY, INC.	HG ENERGY II APPALACHIA LLC	ASSIGNMENT	449	494
					DOMINION TRANSMISSION INC	DOMINION ENERGY TRANSMISSION, INC.	MERGER/NAME CHANGE	WVSOS	
					DOMINION ENERGY TRANSMISSION, INC.	HG ENERGY II APPALACHIA LLC	SECOND AMENDMENT TO MEMORANDUM OF FARMOUT AGREEMENT	454	483
					DOMINION ENERGY TRANSMISSION, INC.	HG ENERGY II APPALACHIA LLC	THIRD AMENDMENT TO MEMORANDUM OF FARMOUT AGREEMENT	475	576
					DOMINION ENERGY TRANSMISSION, INC.	HG ENERGY II APPALACHIA LLC	ASSIGNMENT	479	1
X	23	FK066130	p/o 02-0013-0017-0000	Q100731000	H. C. SPRAY, WIDOWER; MABEL SPRAY, SINGLE; LUCY E. STRUBLER AND PAUL J. STRUBLER, JR., HER HUSBAND; GLEN SPRAY AND ELSIE SPRAY, HIS WIFE; FRANCES MCQUEEN AND DAVID MCQUEEN, HER HUSBAND; RUTH KOHL AND BLAINE KOHL, HER HUSBAND; DORIS BELT AND DAVID R. BELT, HER HUSBAND; MARK B. SPRAY AND ELOISE SPRAY, HIS WIFE; AND E. W. HOLLAND AND AXIE HOLLAND, HIS WIFE	HOPE NATURAL GAS COMPANY	NOT LESS THAN 1/8	58	358
					HOPE NATURAL GAS COMPANY	CONSOLIDATED GAS SUPPLY CORPORATION	CONFIRMATORY DEED	143	345
					CONSOLIDATED GAS SUPPLY CORPORATION	CONSOLIDATED GAS TRANSMISSION CORPORATION	ASSIGNMENT	135	583
					CONSOLIDATED GAS TRANSMISSION CORPORATION	CNG TRANSMISSION CORPORATION	MERGER/NAME CHANGE	328	398
					CNG TRANSMISSION CORPORATION	DOMINION TRANSMISSION, INC.	MERGER/NAME CHANGE	332	570
					DOMINION TRANSMISSION, INC.	CNX GAS COMPANY LLC	MEMORANDUM OF FARMOUT AGREEMENT	323	187
					CNX GAS COMPANY LLC	NOBLE ENERGY, INC.	LIMITED PARTIAL ASSIGNMENT (50%)	337	446
					DOMINION TRANSMISSION INC	CNX GAS COMPANY AND NOBLE ENERGY INC	PARTIAL ASSIGNMENT (32%)	424	234
					CNX GAS COMPANY LLC	NOBLE ENERGY, INC.	ASSIGNMENT	377	212
					NOBLE ENERGY, INC.	HG ENERGY II APPALACHIA LLC	ASSIGNMENT	449	416
					DOMINION TRANSMISSION INC	DOMINION ENERGY TRANSMISSION, INC.	MERGER/NAME CHANGE	WVSOS	
					DOMINION ENERGY TRANSMISSION, INC.	HG ENERGY II APPALACHIA LLC	SECOND AMENDMENT TO MEMORANDUM OF FARMOUT AGREEMENT	454	483
					DOMINION ENERGY TRANSMISSION, INC.	HG ENERGY II APPALACHIA LLC	THIRD AMENDMENT TO MEMORANDUM OF FARMOUT AGREEMENT	475	576
					DOMINION ENERGY TRANSMISSION, INC.	HG ENERGY II APPALACHIA LLC	ASSIGNMENT	479	1
X	25	FK080153 FEE	03-001D-0009-0000 03-001D-0010-0000 03-001D-0014-0000	FK080153 FEE	DOMINION ENERGY TRANSMISSION, INC.	HG Energy II Appalachia, LLC	MINERAL DEED	740	746
					J. R. HURST AND FLORENCE HURST, HIS WIFE	HOPE NATURAL GAS COMPANY	NOT LESS THAN 1/8	172	85
					HOPE NATURAL GAS COMPANY	CONSOLIDATED GAS SUPPLY CORPORATION	CONFIRMATORY DEED	294	89

X	26	FK056154	03-1E-0025-0000 03-1E-0029-0000 p/o 03-1E-0026-0000	Q100494000	CONSOLIDATED GAS SUPPLY CORPORATION	CONSOLIDATED GAS TRANSMISSION CORPORATION	ASSIGNMENT	425	127
					CONSOLIDATED GAS TRANSMISSION CORPORATION	CNG TRANSMISSION CORPORATION	MERGER/NAME CHANGE	WVSOS	
					CNG TRANSMISSION CORPORATION	DOMINION TRANSMISSION, INC.	MERGER/NAME CHANGE	WVSOS	
					DOMINION TRANSMISSION, INC.	CNX GAS COMPANY LLC	MEMORANDUM OF FARMOUT AGREEMENT	672	154
					CNX GAS COMPANY LLC	NOBLE ENERGY, INC.	LIMITED PARTIAL ASSIGNMENT (50%)	684	57
					DOMINION TRANSMISSION, INC.	CNX GAS COMPANY LLC AND NOBLE ENERGY, INC.	PARTIAL ASSIGNMENT (32%)	712	848
					CNX GAS COMPANY LLC	NOBLE ENERGY, INC.	ASSIGNMENT	717	1
					NOBLE ENERGY, INC.	HG ENERGY II APPALACHIA, LLC	ASSIGNMENT	722	170
					DOMINON TRANSMISSION, INC.	DOMINION ENERGY TRANSMISSION, INC.	MERGER/NAME CHANGE	WVSOS	
					DOMINION ENERGY TRANSMISSION, INC.	HG ENERGY II APPALACHIA, LLC	SECOND AMENDMENT TO MEMORANDUM OF FARMOUT AGREEMENT	723	499
DOMINION ENERGY TRANSMISSION, INC.	HG ENERGY II APPALACHIA, LLC	THIRD AMENDMENT TO MEMORANDUM OF FARMOUT AGREEMENT	734	558					
DOMINION ENERGY TRANSMISSION, INC.	HG ENERGY II APPALACHIA, LLC	ASSIGNMENT (68%)	736	220					
X	34	FK056153	03-001E-0040-0000 03-001E-0040-0001 03-001E-0045-0000	Q100343000	DOLLIE HARDMAN AND O. M. HARDMAN, HER HUSBAND; RELLA LOWTHER AND L. C. LOWTHER, HER HUSBAND; AND ESTIE FRYMYER	HOPE NATURAL GAS COMPANY	NOT LESS THAN 1/8	172	181
					HOPE NATURAL GAS COMPANY	CONSOLIDATED GAS SUPPLY CORPORATION	CONFIRMATORY DEED	294	89
					CONSOLIDATED GAS SUPPLY CORPORATION	CONSOLIDATED GAS TRANSMISSION CORPORATION	ASSIGNMENT	425	127
					CONSOLIDATED GAS TRANSMISSION CORPORATION	CNG TRANSMISSION CORPORATION	MERGER/NAME CHANGE	51	795
					CNG TRANSMISSION CORPORATION	DOMINION TRANSMISSION, INC.	MERGER/NAME CHANGE	9	628
					DOMINION TRANSMISSION, INC.	CNX GAS COMPANY LLC	MEMORANDUM OF FARMOUT AGREEMENT	672	154
					CNX GAS COMPANY LLC	NOBLE ENERGY, INC.	LIMITED PARTIAL ASSIGNMENT (50%)	684	57
					DOMINION TRANSMISSION, INC.	CNX GAS COMPANY LLC AND NOBLE ENERGY, INC.	PARTIAL ASSIGNMENT (32%)	712	848
					CNX GAS COMPANY LLC	NOBLE ENERGY, INC.	ASSIGNMENT	717	1
					NOBLE ENERGY, INC.	HG ENERGY II APPALACHIA, LLC	ASSIGNMENT	722	170
DOMINON TRANSMISSION, INC.	DOMINION ENERGY TRANSMISSION, INC.	MERGER/NAME CHANGE	WVSOS						
DOMINION ENERGY TRANSMISSION, INC.	HG ENERGY II APPALACHIA, LLC	SECOND AMENDMENT TO MEMORANDUM OF FARMOUT AGREEMENT	723	499					
DOMINION ENERGY TRANSMISSION, INC.	HG ENERGY II APPALACHIA, LLC	THIRD AMENDMENT TO MEMORANDUM OF FARMOUT AGREEMENT	734	558					
DOMINION ENERGY TRANSMISSION, INC.	HG ENERGY II APPALACHIA, LLC	ASSIGNMENT (68%)	736	220					
X	35	FK066066 HGII0002	p/o 03-001E-0044-0000	Q100988000	C. W. RADCLIFF, WIDOWER; PEARL WHITE AND VIRGIL A. WHITE, HER HUSBAND; VIRGIL C. RADCLIFF AND CATHERINE E. RADCLIFF, HIS WIFE; MILDRED MCINTYRE AND JAMES W. MCINTYRE, HER HUSBAND; OPAL BRADY AND WOODROW W. BRADY, HER HUSBAND	HOPE NATURAL GAS COMPANY	NOT LESS THAN 1/8	235	86
					HOPE NATURAL GAS COMPANY	CONSOLIDATED GAS SUPPLY CORPORATION	CONFIRMATORY DEED	294	89
					CONSOLIDATED GAS SUPPLY CORPORATION	CONSOLIDATED GAS TRANSMISSION CORPORATION	ASSIGNMENT	425	127
					CONSOLIDATED GAS TRANSMISSION CORPORATION	CNG TRANSMISSION CORPORATION	MERGER/NAME CHANGE	51	795
					CNG TRANSMISSION CORPORATION	DOMINION TRANSMISSION, INC.	MERGER/NAME CHANGE	9	628
					DOMINION TRANSMISSION, INC.	CNX GAS COMPANY LLC	MEMORANDUM OF FARMOUT AGREEMENT	672	154
					CNX GAS COMPANY LLC	NOBLE ENERGY, INC.	LIMITED PARTIAL ASSIGNMENT (50%)	684	57
					DOMINION TRANSMISSION, INC.	CNX GAS COMPANY LLC AND NOBLE ENERGY, INC.	PARTIAL ASSIGNMENT (32%)	712	848
					CNX GAS COMPANY LLC	NOBLE ENERGY, INC.	ASSIGNMENT	717	1
					NOBLE ENERGY, INC.	HG ENERGY II APPALACHIA, LLC	ASSIGNMENT	722	170
DOMINON TRANSMISSION, INC.	DOMINION ENERGY TRANSMISSION, INC.	MERGER/NAME CHANGE	WVSOS						
DOMINION ENERGY TRANSMISSION, INC.	HG ENERGY II APPALACHIA, LLC	SECOND AMENDMENT TO MEMORANDUM OF FARMOUT AGREEMENT	723	499					
DOMINION ENERGY TRANSMISSION, INC.	HG ENERGY II APPALACHIA, LLC	THIRD AMENDMENT TO MEMORANDUM OF FARMOUT AGREEMENT	734	558					
DOMINION ENERGY TRANSMISSION, INC.	HG ENERGY II APPALACHIA, LLC	ASSIGNMENT (68%)	736	220					
X	39	FK083813 FEE	02-0014-0004-0000 02-0014-0004-0001	FK083813 FEE	DOMINION ENERGY TRANSMISSION, INC.	HG Energy II Appalachia, LLC	MINERAL DEED	434	401
X	40	FK079413 FEE	02-0014-0005-0000 02-0014-0005-0001	FK079413 FEE	DOMINION ENERGY TRANSMISSION, INC.	HG Energy II Appalachia, LLC	MINERAL DEED	434	401

X	41	CNX066102	03-001E-0043-0000	CNX066102	LYDIA STARCHER, SINGLE; A. L. STARCHER, SINGLE; W. R. STARCHER, SINGLE; B. J. RINEHART, WIDOWER; OLETA RINEHART, SINGLE; TURIA R. KING & ERNEST G. KING, HER HUSBAND; J. CARL RINEHART & ELSIE MCCALL RINEHART, HIS WIFE	HOPE NATURAL GAS COMPANY	NOT LESS THAN 1/8	236	39
					HOPE NATURAL GAS COMPANY	CONSOLIDATED GAS SUPPLY CORPORATION	CONFIRMATORY DEED	294	89
					CONSOLIDATED GAS SUPPLY CORPORATION	CONSOLIDATED GAS TRANSMISSION CORPORATION	ASSIGNMENT	425	127
					CONSOLIDATED GAS TRANSMISSION CORPORATION	CNG TRANSMISSION CORPORATION	MERGER/NAME CHANGE	WVSOS	
					CNG TRANSMISSION CORPORATION	DOMINION TRANSMISSION, INC.	MERGER/NAME CHANGE	WVSOS	
					DOMINION TRANSMISSION, INC.	CONSOL ENERGY HOLDINGS LLC XVI	ASSIGNMENT	651	318
					CONSOL ENERGY HOLDINGS LLC XVI	CONSOL GAS COMPANY	MERGER/NAME CHANGE	WVSOS	
					CONSOL GAS COMPANY	CNX GAS COMPANY LLC	MERGER/NAME CHANGE	WVSOS	
					CNX GAS COMPANY LLC	NOBLE ENERGY, INC.	LIMITED PARTIAL ASSIGNMENT (50%)	659	521
					CNX GAS COMPANY LLC	NOBLE ENERGY, INC.	ASSIGNMENT	717	1
					NOBLE ENERGY, INC.	HG ENERGY II APPALACHIA, LLC	ASSIGNMENT	722	170
X	68	WACO&G-3	03-002E-0022-0001 03-002E-0022-0006 03-002F-0110-0000 p/o 03-002E-0022-0000 p/o 03-002E-0022-0003	WACO&G-3	ALBERT RALSTON AND MARGARET RALSTON, AND J.A. RADCLIFF AND BIRD RADCLIFF	ROBERT KRAUS AND FRANK WHELAN	NOT LESS THAN 1/8	74	419
					ROBERT KRAUS AND FRANK WHELAN	CARNEGIE NATURAL GAS COMPANY	ASSIGNMENT	250	418
					CARNEGIE NATURAL GAS COMPANY	A.M. SNIDER	ASSIGNMENT	250	418
					A.M. SNIDER	FRED KIGER AND ALVA MCCULLOUGH	ASSIGNMENT	250	269
					FRED KIGER AND ALVA MCCULLOUGH	BERNARD S. NEEDLE, DBA ELDEEN OIL & GAS COMPANY (49/64) AND W. V. PROPER (15/64)	ASSIGNMENT	258	327
					BERNARD S. NEEDLE, DBA ELDEEN OIL & GAS COMPANY, AND W.V. PROPER	FRED KIGER AND ALVA MCCULLOUGH	PARTIAL ASSIGNMENT	256	361
					WILLIAM V. PROPER AND BERNARD S. NEEDLE, DBA ELDEEN OIL & GAS COMPANY	PETROSUR OIL CORPORATION	ASSIGNMENT	258	341
					PETROSUR OIL CORPORATION	WILLIAM V. PROPER AND BERNARD S. NEEDLE, DBA ELDEEN OIL AND GAS COMPANY	ASSIGNMENT	261	665
					WILLIAM V. PROPER AND BERNARD S. NEEDLE, DBA ELDEEN OIL & GAS COMPANY	KATHERINE H. PROPER	LAST WILL AND TESTAMENT	M	6
					BERNARD S. NEEDLE AND LUCILLE NEEDLE, AND KATHERINE H. PROPER	R.K. SHEFFER DBA PRINE PETROLEUM COMPANY	ASSIGNMENT	286	475
					FRED KIGER AND ALVA MCCULLOUGH	R.K. SHEFFER	ASSIGNMENT	286	436
					R.K. SHEFFER, DBA PRIME PETROLEUM COMPANY	VIRONT PETROLEUM COMPANY	PARTIAL ASSIGNMENT (60%)	286	460
					R.K. SHEFFER, DBA PRIME PETROLEUM COMPANY	VIRONT PETROLEUM COMPANY	PARTIAL ASSIGNMENT (5%)	286	463
					R.,, SHEFFER	IRA VAN TUYL	ASSIGNMENT	291	330
					IRA VAN TUYL, IN HIS OWN RIGHT, AND IRA VAN TUYL AND ELSIN VAN TUYL, PARTNERS TRADING AND DOING BUSINESS A V-T DRILLING COMPANY	VIRONT PETROLEUM COMPANY	ASSIGNMENT	312	432
					VIRONT PETROLEUM COMPANY INC	JETT PETROLEUM INC	ASSIGNMENT	341	597
					JETT PETTROLEUM COMPANY INC	JAY SHEARER, DBA RED GAS COMPANY	ASSIGNMENT	545	460
					JAY SHEARER, DBA RED GAS COMPANY	TRIAD ENERGY CORP	ASSIGNMENT	568	5
					TRIAD ENERGY CORPORATION	TRIAD HUNTER LLC	ASSIGNMENT	641	333
					TRIAD HUNTER LLC	WACO OIL & GAS CO INC	ASSIGNMENT	679	476
					WACO OIL & GAS CO INC	HG ENERGY II APPALACHIA, LLC	ASSIGNMENT	802	947
X	69	TBD	02-0014-0001-0000	TBD	IVAH R. SCHMIDT AND HARVEY B. SCHMIDT, HER HUSBAND; HENRY ALBERS AND ETHEL ALBERS, HIS WIFE; CLARA T. WANSTREET AND HENRY B. WANSTREET, HER HUSBAND; JOHN A. ALBERS AND MARY O. ALBERS, HIS WIFE; FRANCIS H. MEANS AND ENDA M. MEANS, HIS WIFE; BEN C. NUCKOLLS AND RUBY G. NUCKOLLS, HIS WIFE; MARGARET RASTLE, WIDOW; CLARK P. BRYSON AND VICTORIA A. BRYSON, HIS WIFE; EVIE E. BODE AND FLORENCE L. BODE, HIS WIFE; WALTER E. BODE AND NOLA J. BODE, HIS WIFE	HOPE NATURAL GAS COMPANY	NOT LESS THAN 1/8	58	353
					HOPE NATURAL GAS COMPANY	CONSOLIDATED GAS SUPPLY CORPORATION	CONFIRMATORY DEED	143	345
					CONSOLIDATED GAS SUPPLY CORPORATION	CONSOLIDATED GAS TRANSMISSION CORPORATION	ASSIGNMENT	135	583

				CONSOLIDATED GAS TRANSMISSION CORPORATION	CNG TRANSMISSION CORPORATION	MERGER/NAME CHANGE	328	398
				CNG TRANSMISSION CORPORATION	DOMINION TRANSMISSION, INC.	MERGER/NAME CHANGE	332	570
				DOMINION TRANSMISSION INC	CONSOL ENERGY HOLDINGS LLC XVI	ASSIGNMENT	245	1
				CONSOL ENERGY HOLDINGS LLC XVI	CONSOL GAS COMPANY	MERGER/NAME CHANGE	293	252
				CONSOL GAS COMPANY	CNX GAS COMPANY	MERGER/NAME CHANGE	293	252
				CNX GAS COMPANY LLC	HG ENERGY II APPALACHIA LLC	ASSIGNMENT	508	457
				JASON G. BAILEY AND MINNIE E. BAILEY, HIS WIFE	W.V. PROPER	NOT LESS THAN 1/8	255	105
				W.V. PROPER	PETROSUR OIL CORPORATION	ASSIGNMENT	258	344
				PETROSUR OIL CORPORATION	WILLIAM V. PROPER AND BERNARD S. NEEDLE, DBA ELDEEN OIL AND GAS COMPANY	ASSIGNMENT	261	662
				WILLIAM H. PROPER, DECEASED	KATHERINE H. PROPER	LAST WILL AND TESTAMENT	M	6
				BERNARD S. NEEDLE AND LUCILLE NEEDLE, AND KATHERINE H. PROPER	R.K. SHEFFER DBA PRINE PETROLEUM COMPANY	ASSIGNMENT	286	475
				FRED KIGER AND ALVA MCCULLOUGH	R.K. SHEFFER	ASSIGNMENT	286	436
				R.K. SHEFFER, DBA PRIME PETROLEUM COMPANY	VIRONT PETROLEUM COMPANY	PARTIAL ASSIGNMENT (60%)	286	460
				R.K. SHEFFER, DBA PRIME PETROLEUM COMPANY	VIRONT PETROLEUM COMPANY	PARTIAL ASSIGNMENT (5%)	286	463
				R., SHEFFER	IRA VAN TUYL	ASSIGNMENT	291	330
				IRA VAN TUYL, IN HIS OWN RIGHT, AND IRA VAN TUYL AND ELSIN VAN TUYL, PARTNERS TRADING AND DOING BUSINESS A V-T DRILLING COMPANY	VIRONT PETROLEUM COMPANY	ASSIGNMENT	312	427
				VIRONT PETROLEUM COMPANY INC	JETT PETROLEUM INC	ASSIGNMENT	341	597
				JETT PETROLEUM INC	DEWAYNE ALFRED, INCORPORATOR; RUSSELL B. BUSH, INCORPORATOR; DEWAYNE L. ALFRED, PRESIDENT; CARLENE ALFRED, VICE-PRESIDENT	LIST OF PRINCIPAL OFFICERS	WVSOS	
				DEWAYNE LEE ALFRED, DECEASED	CARLENE ALFRED	LAST WILL AND TESTAMENT	27	341
				CARLENE ALFRED	HG ENERGY II APPALACHIA, LLC	HUO Hearing Scheduled 7/30/24, Oil & Gas Commission	Docket 364	406
				MAUDIE TYSON, SINGLE; SAMUEL J. REESE AND HIS WIFE, LUCILLE M. REESE; OUITA CROWDER AND HER HUSBAND WILLIAM J. CROWDER; MADELINE MILLER AND HER HUSBAND F. W. MILLER	W. H. MOSSOR	NOT LESS THAN 1/8	272	497
				W. H. MOSSOR	DR. W. H. PRATHER	AGREEMENT (1/32)	393	237
				W. H. MOSSOR	DR. F. G. PRATHER	AGREEMENT (1/32)	393	651
				W. H. MOSSOR	E. F. LINDEY, SR., OR J.W. LINDEY OR E. F. LINDEY, JR.	AGREEMENT (1/32)	398	343
				W. H. MOSSOR	DEAN OR VIOLA FORRESTER	AGREEMENT (1/32)	398	436
				W. H. MOSSOR	WARNER OR CHARLOTTE OHMAN	AGREEMENT (1/64)	398	618
				W. H. MOSSOR	E. J. ECCLES	AGREEMENT (1/64)	414	685
				W. H. MOSSOR	H. E. BEANE	AGREEMENT (2/32)	417	393
				W. H. MOSSOR	STANLEY M. HALL	AGREEMENT (1/64)	419	25
				W. H. MOSSOR	J&J ENTERPRISES INC	ASSIGNMENT	388	185
				W. H. MOSSOR	TERM ENERGY CORPORATION	ASSIGNMENT	387	570
				E. F. LINDEY, SR	ROBERT E. FOX AND MARY ANN S. FOX	ASSIGNMENT	399	46
				DEAN K. FORRESTER	ROBERT E. FOX AND MARY ANN S. FOX	ASSIGNMENT	399	41
				DR. W.H. PRATHER	TERM ENERGY CORPORATION	ASSIGNMENT	393	298
				DR. F. G. PRATHER	TERM ENERGY CORPORATION	ASSIGNMENT	394	285
				WARNER OR CHARLOTTE OHMAN	TERM ENERGY CORPORATION	ASSIGNMENT	399	628
				DR. ROBERT D. ROLLER	TERM ENERGY CORPORATION	ASSIGNMENT	403	207
				STANLEY M. HALL ESTATE, BY MARGARET E. RITCHEY, ADMINISTRATRIX OF THE STANLEY M. HALL ESTATE	TERM ENERGY CORPORATION	ASSIGNMENT	419	68
				W. H. MOSSOR	LENORA DEEM, LEONARD MOSSOR, NAOMI CLARK, CLARA BUMGARDNER, ROY G. MOSSOR AND JOHNNIE MOSSOR	LAST WILL AND TESTAMENT	16	154
				E. J. ECCLES	TERM ENERGY CORPORATION	ASSIGNMENT	415	75
				DOROTHY M. BEANE, MARGARET B. VARSELL, HARRY E. BEANE, JR., AND COLONIAL BANK, TRUSTEE, U/W H. E. BEANE	TERM ENERGY CORPORATION	AGREEMENT	417	454
				TERM ENERGY CORPORATION INC	SUN PANTRY ENTERPRISES INC	ASSIGNMENT	417	467
				J&J ENTERPRISES INC	TERM ENERGY CORPORATION	ASSIGNMENT	428	96
X	79	1223ST79.0.2	03-002F-0003-0000 03-002F-0006-0000	1223ST79.0.2				
X	80	WACO&G-2	03-002F-0004-0000 03-002F-0005-0000	WACO&G-2				

				MARY ANN S. FOX (CO-DIRECTOR OF TERM ENERGY CORPORATION)	THOMAS MOODY, DBA MOODY OIL AND GAS	ASSIGNMENT	515	46	
				ROBERT E. FOX (CO-DIRECTOR OF TERM ENERGY CORPORATION)	THOMAS MOODY, DBA MOODY OIL AND GAS	ASSIGNMENT	515	45	
				CHEMICAL ENGINEERING PARTNERS (SUCCESSOR OF SUN PANTRY ENTERPRISES)	THOMAS MOODY, DBA MOODY OIL AND GAS	ASSIGNMENT	568	83	
				THOMAS E. MOODY, DBA MOODY OIL & GAS	JAY T. SHEARER, DBA RED GAS COMPANY	ASSIGNMENT	556	396	
				JAY T. SHEARER, DBA RED GAS COMPANY	TRIAD ENERGY CORP	ASSIGNMENT	568	5	
				TRIAD ENERGY CORPORATION	TRIAD HUNTER LLC	ASSIGNMENT	641	333	
				TRIAD HUNTER LLC	WACO OIL & GAS CO INC	ASSIGNMENT	679	476	
				WACO OIL & GAS CO INC	HG ENERGY II APPALACHIA, LLC	ASSIGNMENT	802	947	
				Hundred Resources, Inc.	HG ENERGY II APPALACHIA, LLC	NOT LESS THAN 1/8	803	832	
				EIGG Land Limited	HG ENERGY II APPALACHIA, LLC	NOT LESS THAN 1/8	803	842	
				Leta Faye Dunlap	HG ENERGY II APPALACHIA, LLC	NOT LESS THAN 1/8	803	848	
				Julian Vernon Talbott	HG ENERGY II APPALACHIA, LLC	NOT LESS THAN 1/8	803	850	
				Andrew C. Pope	HG ENERGY II APPALACHIA, LLC	NOT LESS THAN 1/8	804	269	
				Darrell Talbott	HG ENERGY II APPALACHIA, LLC	NOT LESS THAN 1/8	803	824	
				Shannon K. Cunningham	HG ENERGY II APPALACHIA, LLC	NOT LESS THAN 1/8	803	826	
				Michael D. Alfred	HG ENERGY II APPALACHIA, LLC	NOT LESS THAN 1/8	803	828	
				Glen R. Talbott aka Dick Talbott	HG ENERGY II APPALACHIA, LLC	HUO Hearing Scheduled 7/30/24, Oil & Gas Commission	Docket 364	406	
				Sherri Brown	HG ENERGY II APPALACHIA, LLC	HUO Hearing Scheduled 7/30/24, Oil & Gas Commission	Docket 364	406	
				Patricia Ann Ross aka Patricia A. Ross aka Patricia Ross DOD: 6/5/2019 in Fentress County, TN	HG ENERGY II APPALACHIA, LLC	HUO Hearing Scheduled 7/30/24, Oil & Gas Commission	Docket 364	406	
X	83	HGII03761 et al	03-002F-0007-0000 03-002F-0008-0000	HGII03761 et al	Hundred Resources, Inc.	HG ENERGY II APPALACHIA, LLC	NOT LESS THAN 1/8	802	365
					EIGG Land Limited	HG ENERGY II APPALACHIA, LLC	NOT LESS THAN 1/8	803	845
					Julian V. Talbott	HG ENERGY II APPALACHIA, LLC	NOT LESS THAN 1/8	803	360
					Leta F. Dunlap	HG ENERGY II APPALACHIA, LLC	NOT LESS THAN 1/8	803	304
					Darrell Talbott	HG ENERGY II APPALACHIA, LLC	NOT LESS THAN 1/8	804	102
					Andrew C. Pope	HG ENERGY II APPALACHIA, LLC	NOT LESS THAN 1/8	804	470
					Shannon K. Cunningham	HG ENERGY II APPALACHIA, LLC	NOT LESS THAN 1/8	803	352
					Michael D. Alfred	HG ENERGY II APPALACHIA, LLC	NOT LESS THAN 1/8	802	962
					Denise Russell-Daigneault AKA Denise Rassel	HG ENERGY II APPALACHIA, LLC	NOT LESS THAN 1/8	805	785
					Glen R. Talbott aka Dick Talbott	HG ENERGY II APPALACHIA, LLC	HUO Hearing Scheduled 7/30/24, Oil & Gas Commission	Docket 364	406
					Sherri Brown	HG ENERGY II APPALACHIA, LLC	HUO Hearing Scheduled 7/30/24, Oil & Gas Commission	Docket 364	406
					Patricia Ann Ross aka Patricia A. Ross aka Patricia Ross DOD: 6/5/2019 in Fentress County, TN	HG ENERGY II APPALACHIA, LLC	HUO Hearing Scheduled 7/30/24, Oil & Gas Commission	Docket 364	406
X	84	HGII03608 et al	03-002F-0010-0000 03-002F-0011-0000 03-002F-0018-0000	HGII03608 et al	ANDREW EDMISTON JR. AND MERLE W. EDMISTON, HIS WIFE; MATTHEW EDMISTON AND NELLIE MCWHORTER EDMISTON, HIS WIFE; EDWARD A. BRANNON AND IRMA C. BRANNON, HIS WIFE; IDA J. WARDER; ELLA M. FLANNERY; GEORGE W. NORVELL AND MARY W. NORVELL, HIS WIFE; FRANK WYATT AND VIRGINIA E. WYATT, HIS WIFE; AND LOISE EDWARDS	MCCALL DRILLING CO	NOT LESS THAN 1/8	148	80
					MCCALL DRILLING COMPANY INC	KEWANEE OIL COMPANY	ASSIGNMENT	293	132
					KEWANEE OIL COMPANY	KEWANEE INDUSTRIES INC	SPECIAL WARRANTY DEED	368	609
					KEWANEE INDUSTRIES INC	GULF OIL CORPORATION	CONVEYANCE	369	25
					GULF OIL CORPORATION	CHEVRON USA INC	MERGER/NAME CHANGE	WVSOS	
					CHEVRON USA INC	ANGERMAN ASSOCIATES INC	ASSIGNMENT	451	63
					ANGERMAN ASSOCIATES INC	PETROLEUM DEVELOPMENT CORPORATION	ASSIGNMENT	537	35
					PETROLEUM DEVELOPMENT CORPORATION	PDC MOUNTAINEER LLC	ASSIGNMENT	640	568
					PDC MOUNTAINEER LLC	RIVER RIDGE ENERGY LLC	MERGER/NAME CHANGE	3	697
					RIVER RIDGE ENERGY LLC	HG ENERGY II APPALACHIA, LLC	JOA DRILLING AGREEMENT	562	540
X	92	HGII03762 et al	03-002F-0008-0000	HGII03762 et al	Hundred Resources, Inc.	HG ENERGY II APPALACHIA, LLC	NOT LESS THAN 1/8	803	835
					Garnet Gas Corporation	HG ENERGY II APPALACHIA, LLC	NOT LESS THAN 1/8	805	32

# HG Energy II Appalachia, LLC

5260 Dupont Road  
Parkersburg, WV 26101  
(304) 420-1100 - Office  
(304) 863-3172 - Fax

---

July 29, 2024

WV DEP  
Division of Oil & Gas  
Attn: Cragin Blevins  
601 57<sup>th</sup> Street  
Charleston, West Virginia 25304

*Ok #46175  
7500<sup>00</sup>*

RE: Barnes 1223 S-10H Drill Permit Revision Request – (47-041-06974)  
Cove District, Doddridge County  
West Virginia

Dear Mr. Blevins -

Per our discussions, enclosed are revised forms (survey plat, mylar, WW-6B, casing schematic, AOR and WW-6A1) and a check for expedited service for the 1223 S-10H well work permit revision request. We ask the permit be modified to include additional acquired leases resulting in extended total measured depth and horizontal leg for the specified lateral.

Please let me know if you have any questions or require additional information. I can be reached at (304) 420-1119 or [dwhite@hgenergyllc.com](mailto:dwhite@hgenergyllc.com).

Very truly yours,

*Diane White*

Diane C. White

Enclosures

RECEIVED  
Office of Oil and Gas

AUG 9 2024

WV Department of  
Environmental Protection

cc: Isaiah Richards – WV DEP State Inspector

08/23/2024