

State of West Virginia
Department of Environmental Protection - Office of Oil and Gas
Well Operator's Report of Well Work

RECEIVED
Office of Oil and Gas

OCT 29 2025

WV Department of
Environmental Protection

API 47 - 017 - 06983 County Doddridge District McLellan
Quad Center Point Pad Name Crimson Pad Field/Pool Name ----
Farm name Shawn A. Glaspell Well Number Rabin Unit 1H
Operator (as registered with the OOG) Antero Resources Corporation
Address 1615 Wynkoop Street City Denver State CO Zip 80202

As Drilled location NAD 83/UTM Attach an as-drilled plat, profile view, and deviation survey
Top hole Northing 4359514.812m Easting 527070.613m
Landing Point of Curve Northing 4359518.66m Easting 526720.02m
Bottom Hole Northing 4364455.763m Easting 525036.025m

Elevation (ft) 1222' GL Type of Well New Existing Type of Report Interim Final
Permit Type Deviated Horizontal Horizontal 6A Vertical Depth Type Deep Shallow
Type of Operation Convert Deepen Drill Plug Back Redrilling Rework Stimulate
Well Type Brine Disposal CBM Gas Oil Secondary Recovery Solution Mining Storage Other _____
Type of Completion Single Multiple Fluids Produced Brine Gas NGL Oil Other _____
Drilled with Cable Rotary

Drilling Media Surface hole Air Mud Fresh Water Intermediate hole Air Mud Fresh Water Brine
Production hole Air Mud Fresh Water Brine
Mud Type(s) and Additive(s)
Air - Foam & 4% KCL
Mud - Polymer

Date permit issued 6/10/2024 Date drilling commenced 7/1/2024 Date drilling ceased 9/28/2024
Date completion activities began 3/10/2025 Date completion activities ceased 5/27/2025
Verbal plugging (Y/N) N/A Date permission granted N/A Granted by N/A

Please note: Operator is required to submit a plugging application within 5 days of verbal permission to plug

Freshwater depth(s) ft 303', 953' Open mine(s) (Y/N) depths No
Salt water depth(s) ft 2123' Void(s) encountered (Y/N) depths No
Coal depth(s) ft N/A Cavern(s) encountered (Y/N) depths No
Is coal being mined in area (Y/N) No

APPROVED

Reviewed by:

Shawn King 11-3-25

03/13/2026

OCT 29 2025

WR-35
Rev. 8/23/13

API 47-017 - 06983

Farm name Shawn A. Glaspell

WV Department of Environmental Protection
Well number Rabin Unit 1H

CASING STRINGS	Hole Size	Casing Size	Depth	New or Used	Grade wt/ft	Basket Depth(s)	Did cement circulate (Y/N) * Provide details below*
Conductor	28"	20"	125.5'	New	91.59#, J-55	N/A	Y
Surface	17-1/2"	13-3/8"	1051'	New	54.5#, J-55	N/A	Y
Coal							
Intermediate 1	12-3/8"	9-5/8"	3190'	New	36#, J-55	N/A	Y
Intermediate 2							
Intermediate 3							
Production	8-3/4"/8-1/2"	5-1/2"	24873'	New	23#, P-110-ICY	N/A	Y
Tubing		2-3/8"	7225'		4.7#, P-110		
Packer type and depth set		N/A					

Comment Details _____

CEMENT DATA	Class/Type of Cement	Number of Sacks	Slurry wt (ppg)	Yield (ft ³ /sks)	Volume (ft ³)	Cement Top (MD)	WOC (hrs)
Conductor	Class A	158 sx	15.6	1.18	186	0'	8 Hrs.
Surface	Class A	880 sx	15.6	1.19	1047	0'	8 Hrs.
Coal							
Intermediate 1	Class H	1009 sx	15.6	1.18	1191	0'	8 Hrs.
Intermediate 2							
Intermediate 3							
Production	Class H	4428 sx (Tail)	13.5 (Lead), 15.2(Tail)	1.26 (Tail)	5579	~500' into Intermediate Casing	8 Hrs.
Tubing							

Drillers TD (ft) 24873' MD, 7208' TVD (BHL), 7206' (Deepest Point Drilled)

Loggers TD (ft) 24873' MD

Deepest formation penetrated Marcellus

Plug back to (ft) N/A

Plug back procedure N/A

Kick off depth (ft) 6521'

Check all wireline logs run caliper density deviated/directional induction
 neutron resistivity gamma ray temperature sonic

Well cored Yes No Conventional Sidewall Were cuttings collected Yes No

DESCRIBE THE CENTRALIZER PLACEMENT USED FOR EACH CASING STRING _____

Conductor - 0

Surface - 1 above guide shoe, 1 above insert float, 1 every 4th joint to surface

Intermediate - 1 above float joint, 1 above float collar, 1 every 4th joint to surface

Production - 1 above float joint, 1 below float collar, 1 every 3rd joint to top of cement

WAS WELL COMPLETED AS SHOT HOLE Yes No DETAILS _____

WAS WELL COMPLETED OPEN HOLE? Yes No DETAILS _____

WERE TRACERS USED Yes No TYPE OF TRACER(S) USED N/A

APPROVED

Shawn 03/13/2026 2:25

RECEIVED
Office of Oil and Gas

001-29-2025

WV Department of
Environmental Protection

API 47-017-06983 Form Name Sheet A. Glycol Well Number Report Unit JH
Exhibit 1

Stage No.	Perforation Date	Perforated from MD ft.	MD to MD ft.	Number of Perforations	Formations
1	3/10/2025	24789	24745	60	Marcellus
2	3/10/2025	24785.68	24538.35	60	Marcellus
3	3/11/2025	24503.64	24337.09	60	Marcellus
4	3/12/2025	24301.38	24134.84	60	Marcellus
5	3/12/2025	24099.13	23892.58	60	Marcellus
6	3/13/2025	23896.87	23730.33	60	Marcellus
7	3/13/2025	23694.62	23528.08	60	Marcellus
8	3/14/2025	23492.37	23325.83	60	Marcellus
9	3/14/2025	23290.11	23123.57	60	Marcellus
10	3/15/2025	23087.86	22921.31	60	Marcellus
11	3/16/2025	22885.60	22719.06	60	Marcellus
12	3/16/2025	22683.35	22516.80	60	Marcellus
13	3/17/2025	22481.10	22314.55	60	Marcellus
14	3/17/2025	22278.84	22112.30	60	Marcellus
15	3/18/2025	22076.59	21910.04	60	Marcellus
16	3/18/2025	21874.33	21707.78	60	Marcellus
17	3/19/2025	21672.08	21505.53	60	Marcellus
18	3/19/2025	21469.83	21303.28	60	Marcellus
19	3/20/2025	21267.57	21101.03	60	Marcellus
20	3/20/2025	21065.32	20898.77	60	Marcellus
21	3/21/2025	20863.06	20696.52	60	Marcellus
22	3/21/2025	20660.81	20494.26	60	Marcellus
23	3/22/2025	20458.55	20292.01	60	Marcellus
24	3/22/2025	20256.30	20089.76	60	Marcellus
25	3/23/2025	20054.05	19887.50	60	Marcellus
26	3/23/2025	19851.79	19685.25	60	Marcellus
27	3/24/2025	19649.54	19483.00	60	Marcellus
28	3/24/2025	19447.28	19280.74	60	Marcellus
29	3/25/2025	19245.03	19078.48	60	Marcellus
30	3/25/2025	19042.78	18876.23	60	Marcellus
31	3/25/2025	18840.52	18673.98	60	Marcellus
32	3/26/2025	18638.27	18471.72	60	Marcellus
33	3/28/2025	18436.01	18269.47	60	Marcellus
34	3/27/2025	18233.76	18067.21	60	Marcellus
35	3/28/2025	18031.51	17864.96	60	Marcellus
36	3/28/2025	17829.25	17662.71	60	Marcellus
37	3/29/2025	17627.00	17460.45	60	Marcellus
38	3/29/2025	17424.74	17258.20	60	Marcellus
39	3/30/2025	17222.48	17055.94	60	Marcellus
40	3/31/2025	17020.23	16853.69	60	Marcellus
41	3/31/2025	16817.98	16651.44	60	Marcellus
42	4/1/2025	16615.73	16449.18	60	Marcellus
43	4/1/2025	16413.47	16246.93	60	Marcellus
44	4/2/2025	16211.22	16044.67	60	Marcellus
45	4/2/2025	16008.96	15842.42	60	Marcellus
46	4/3/2025	15806.71	15640.16	60	Marcellus
47	4/4/2025	15604.46	15437.91	60	Marcellus
48	4/4/2025	15402.20	15235.66	60	Marcellus
49	4/5/2025	15199.95	15033.40	60	Marcellus
50	4/5/2025	14997.69	14831.15	60	Marcellus
51	4/6/2025	14795.44	14628.90	60	Marcellus
52	4/7/2025	14593.19	14426.64	60	Marcellus
53	4/7/2025	14390.93	14224.39	60	Marcellus
54	4/8/2025	14188.68	14022.13	60	Marcellus
55	4/8/2025	13986.42	13819.88	60	Marcellus
56	4/9/2025	13784.17	13617.62	60	Marcellus
57	4/9/2025	13581.91	13415.37	60	Marcellus
58	4/11/2025	13379.66	13213.12	60	Marcellus
59	4/13/2025	13177.41	13010.86	60	Marcellus
60	4/13/2025	12975.15	12808.61	60	Marcellus
61	4/13/2025	12772.90	12606.35	60	Marcellus
62	4/13/2025	12570.64	12404.10	60	Marcellus
63	4/13/2025	12368.39	12201.84	60	Marcellus
64	4/16/2025	12166.14	11999.59	60	Marcellus
65	4/16/2025	11963.88	11797.34	60	Marcellus
66	4/16/2025	11761.63	11595.08	60	Marcellus
67	4/16/2025	11559.37	11392.83	60	Marcellus
68	4/18/2025	11357.12	11190.57	60	Marcellus
69	4/18/2025	11154.87	10988.32	60	Marcellus
70	4/19/2025	10952.61	10786.07	60	Marcellus
71	4/19/2025	10750.36	10583.81	60	Marcellus
72	4/19/2025	10548.10	10381.56	60	Marcellus
73	4/19/2025	10345.85	10179.30	60	Marcellus
74	4/21/2025	10143.59	9977.05	60	Marcellus
75	4/21/2025	9941.34	9774.80	60	Marcellus
76	4/22/2025	9739.09	9572.54	60	Marcellus
77	4/23/2025	9536.83	9370.29	60	Marcellus
78	4/23/2025	9334.58	9168.03	60	Marcellus
79	4/23/2025	9132.32	8965.78	60	Marcellus
80	4/24/2025	8930.07	8763.52	60	Marcellus
81	4/24/2025	8727.82	8561.27	60	Marcellus
82	4/25/2025	8525.56	8359.02	60	Marcellus
83	4/25/2025	8323.31	8156.76	60	Marcellus
84	4/26/2025	8121.05	7954.51	60	Marcellus
85	4/26/2025	7918.80	7752.25	60	Marcellus
86	4/28/2025	7716.55	7550.00	60	Marcellus

EXHIBIT 2

Stage No.	Stimulations Date	Avg Pump Rate	Avg Treatment Pressure (PSI)	Max Breakdown Pressure (PSI)	ISIP (PSI)	Amount of Proppant (lbs)	Amount of Water (bbls)	Amount of Nitrogen/ other (units)
1	3/10/2025	70.6	10154.0	9437.0	3980.1	165960	5016.9	N/A
2	3/10/2025	83.6	10541.1	7010.5	4780.0	430120	7409.3	N/A
3	3/11/2025	86.0	9983.8	6801.3	4814.6	434520	7386.0	N/A
4	3/12/2025	96.2	10028.3	7261.1	4851.6	394950	7073.3	N/A
5	3/12/2025	96.6	10566.0	6797.1	4351.0	397590	7051.5	N/A
6	3/13/2025	88.1	10132.0	6805.8	5094.2	397740	8057.1	N/A
7	3/13/2025	91.7	10778.3	7317.8	5242.0	398060	7621.1	N/A
8	3/14/2025	91.5	10216.1	7133.4	4617.9	397150	7118.1	N/A
9	3/14/2025	95.5	10888.8	7538.7	5013.0	415480	7148.0	N/A
10	3/15/2025	86.2	10196.5	7039.1	4439.0	395810	7160.1	N/A
11	3/16/2025	94.4	10881.7	5559.8	5087.0	395080	7003.3	N/A
12	3/16/2025	87.2	10679.5	7425.1	4422.9	392630	7112.9	N/A
13	3/17/2025	90.5	10776.4	7142.3	4819.0	413480	7087.3	N/A
14	3/17/2025	91.8	10686.9	5948.4	4678.0	394790	7064.7	N/A
15	3/18/2025	83.2	10728.9	7487.8	4785.0	394790	8003.6	N/A
16	3/18/2025	96.9	9803.2	6447.4	5159.3	394370	7034.3	N/A
17	3/19/2025	96.2	10034.9	7659.7	4811.0	397610	8922.6	N/A
18	3/19/2025	96.5	9976.3	6401.9	4444.0	394440	7014.2	N/A
19	3/20/2025	98.0	10387.7	7338.8	4473.0	414640	7434.8	N/A
20	3/20/2025	96.8	10056.6	7213.0	4947.0	398520	7007.3	N/A
21	3/21/2025	98.2	9997.5	8039.9	4751.5	407620	7188.9	N/A
22	3/21/2025	96.4	10035.5	6742.4	4912.0	399970	7474.0	N/A
23	3/22/2025	98.2	9887.8	6350.6	4928.0	395430	6953.2	N/A
24	3/22/2025	97.6	9749.2	5886.0	4985.0	411860	6995.5	N/A
25	3/23/2025	97.2	10051.2	6181.9	4871.0	395130	6930.0	N/A
26	3/23/2025	98.3	10344.9	7173.0	4892.0	413760	7077.4	N/A
27	3/24/2025	98.5	10504.4	6568.7	4511.0	395450	6928.3	N/A
28	3/24/2025	97.3	10044.7	6751.9	6049.0	397320	6886.5	N/A
29	3/25/2025	96.4	10217.5	7155.8	4215.0	410620	7056.7	N/A
30	3/25/2025	96.7	10361.8	7461.9	4784.0	412180	7087.0	N/A
31	3/25/2025	96.8	10208.8	7595.1	4263.7	393710	7041.7	N/A
32	3/26/2025	96.6	10143.5	6143.7	6120.9	414900	7158.1	N/A
33	3/26/2025	97.4	9784.8	6630.6	4494.1	398120	6988.9	N/A
34	3/27/2025	98.8	10106.7	6889.8	4940.0	395350	6934.2	N/A
35	3/28/2025	97.0	9790.5	6787.3	4717.2	395390	7011.0	N/A
36	3/28/2025	97.5	9688.7	6788.6	3986.2	413700	7061.2	N/A
37	3/29/2025	96.7	9919.4	7474.3	4713.0	416160	7466.0	N/A
38	3/29/2025	97.4	9708.5	6451.5	5385.0	412850	6881.3	N/A
39	3/30/2025	99.3	9973.3	6497.0	4817.0	401350	7049.0	N/A
40	3/31/2025	97.2	9988.8	6567.3	4477.0	417600	6971.0	N/A
41	3/31/2025	96.6	9709.8	6559.7	4441.0	408100	7114.8	N/A
42	4/1/2025	97.0	9820.8	6528.7	4865.4	411140	7181.7	N/A
43	4/1/2025	96.8	9718.4	6857.4	4871.0	409480	7115.3	N/A
44	4/2/2025	97.9	9760.4	7039.3	4751.0	414280	7027.4	N/A
45	4/2/2025	91.9	9061.3	6497.2	4109.0	414980	7138.2	N/A
46	4/3/2025	96.1	9658.9	9771.0	4922.0	409700	6954.1	N/A
47	4/4/2025	98.0	9788.8	6685.4	4758.3	415300	7116.7	N/A
48	4/4/2025	95.4	9777.0	6704.6	4780.0	413040	6913.4	N/A
49	4/5/2025	97.1	9774.2	7042.8	4821.0	399030	6867.8	N/A
50	4/5/2025	97.8	9659.3	6919.4	4963.0	411280	6858.9	N/A
51	4/6/2025	99.1	9677.9	6585.5	5632.0	411840	7078.7	N/A
52	4/7/2025	97.6	9480.8	6541.6	4443.7	395710	6905.9	N/A
53	4/7/2025	92.7	9096.8	6284.6	5006.5	412240	6923.1	N/A
54	4/8/2025	91.1	9456.7	6758.8	4904.0	390810	6713.9	N/A
55	4/8/2025	98.3	9143.1	6545.3	3932.0	418820	6962.9	N/A
56	4/13/2025	96.8	9212.3	6330.0	4906.3	405760	6854.8	N/A
57	4/13/2025	96.6	8888.4	6038.5	4858.4	398500	6761.3	N/A
58	4/13/2025	96.6	8825.5	6539.0	4576.1	403180	6865.0	N/A
59	4/13/2025	91.2	8722.4	5546.9	4707.8	399760	6749.6	N/A
60	4/13/2025	90.7	8421.2	5683.4	5334.0	399160	6744.0	N/A
61	4/13/2025	90.2	8526.0	5872.1	4345.0	404780	6712.4	N/A
62	4/13/2025	96.0	8679.4	5308.3	4300.0	402620	6810.2	N/A
63	4/13/2025	95.2	8448.3	5506.1	4449.8	401720	6779.5	N/A
64	4/16/2025	97.6	8620.8	6891.7	4364.7	397970	6848.3	N/A
65	4/16/2025	97.8	8753.1	6902.9	4432.6	395800	6847.7	N/A
66	4/16/2025	97.6	8660.0	6950.1	5667.5	414800	7115.1	N/A
67	4/16/2025	96.8	8309.1	6676.0	5520.5	407560	6934.4	N/A
68	4/18/2025	96.6	8330.9	6838.3	5079.2	403490	6824.5	N/A
69	4/18/2025	96.0	8513.9	7212.9	4542.0	400890	6885.0	N/A
70	4/19/2025	97.8	8482.4	7096.6	4153.0	414280	6885.9	N/A
71	4/19/2025	96.5	8459.1	7917.8	4067.0	418840	7234.2	N/A
72	4/19/2025	96.0	8557.9	6912.0	3870.0	422720	7083.3	N/A
73	4/19/2025	96.8	8221.0	6434.2	4280.0	425900	7124.1	N/A
74	4/21/2025	96.8	8610.4	7805.0	4084.4	421900	7043.9	N/A
75	4/21/2025	92.1	8834.0	7227.4	5065.4	405110	6758.0	N/A
76	4/22/2025	96.8	8182.1	6713.5	5879.8	417120	6837.7	N/A
77	4/23/2025	96.7	7948.3	5757.4	4271.6	392780	6602.1	N/A
78	4/23/2025	97.1	8257.6	7170.3	3717.5	419600	6979.6	N/A
79	4/23/2025	97.9	8361.5	6651.0	4574.0	426760	6921.7	N/A
80	4/24/2025	97.9	7862.8	7370.3	4325.0	415500	6962.0	N/A
81	4/24/2025	97.3	7922.7	7520.4	4268.0	418460	6943.7	N/A
82	4/25/2025	96.5	8327.8	7502.9	3882.3	418120	7609.8	N/A
83	4/25/2025	97.4	7904.3	6615.6	4286.0	413140	6919.7	N/A
84	4/26/2025	96.9	8144.1	6007.5	3418.8	419960	6716.1	N/A
85	4/26/2025	98.3	7893.8	5999.2	4415.0	421180	6808.9	N/A
86	4/26/2025	96.6	7761.1	6134.7	4094.6	418140	6932.0	N/A
	AVERAGE	95	8,436	6,823	4,685	34,738,280	604,018	TOTAL

RECEIVED
Office of Oil and Gas

OCT 29 2025

WV Department of
Environmental Protection

03/13/2026

EXHIBIT 3

LITHOLOGY/ FORMATION	TOP DEPTH (TVD)	BOTTOM DEPTH (TVD)	TOP DEPTH (MD)	BOTTOM DEPTH (MD)
	From Surface	From Surface	From Surface	From Surface
Silty Sandstone	1,124	1,224	1,124	1,224
Sandstone, Occ Siltstone	1,224	1,274	1,224	1,274
Silty Sandstone, tr coal	1,274	1,424	1,274	1,424
Silty Sandstone	1,374	1,524	1,374	1,524
Sandstone, Siltstone	1,424	1,524	1,424	1,524
Silty Sandstone, tr coal	1,524	1,574	1,524	1,574
Silty Sandstone	1,574	1,624	1,574	1,624
Silty Sandstone, tr coal	1,624	1,674	1,624	1,674
Sandstone, Siltstone	1,674	1,774	1,674	1,774
Sandstone, Siltstone, tr coal	1,774	1,874	1,774	1,874
Silty Sandstone	1,874	1,974	1,874	1,974
Sandy Siltstone	1,974	2,024	1,974	2,024
Sandy Siltstone	2,024	2,074	2,024	2,074
Siltstone, Occ Sandstone	2,074	2,124	2,074	2,124
Sandy Siltstone, Occ Limestone	2,124	2,131	2,124	2,141
Big Lime	2,157	2,810	2,141	2,832
Fifty Foot Sandstone	2,810	2,973	2,806	2,997
Gordon	2,973	3,202	2,971	3,230
Fifth Sandstone	3,202	3,252	3,204	3,281
Bayard	3,252	4,047	3,255	4,094
Speechley	4,047	4,294	4,068	4,347
Balltown	4,294	4,816	4,321	4,879
Bradford	4,816	5,323	4,853	5,397
Benson	5,323	5,593	5,371	5,672
Alexander	5,593	6,889	5,646	7,021
Sycamore	6,718	6,863	6,827	6,995
Middlesex	6,863	7,005	6,995	7,210
Burkett	7,005	7,035	7,210	7,268
Tully	7,035	7,111	7,268	7,502
Marcellus	7,111	NA	7,502	NA

*Please note Antero determines formation tops based on mud logs that are only run on one well on a multi-well pad. The measured depth (MD) data on subsequent wells may be slightly different due to the well's unique depth.

RECEIVED
Office of Oil and Gas

OCT 29 2025

WV Department of
Environmental Protection

03/13/2026

268' to Bottom Hole

5,421' to Top Hole

TOP HOLE LATITUDE 39 - 25 - 00
BTM HOLE LATITUDE 39 - 27 - 30

TOP HOLE LONGITUDE 80 - 40 - 00
BTM HOLE LONGITUDE 80 - 42 - 30

11,677' to Top Hole

10,614' to Bottom Hole

Antero Resources
Well No. Rabin 1H
As-Drilled
Antero Resources Corporation

Page
1 of 2



Top Hole Coordinates, As-drilled data, and information was provided by Antero Resources Corporation. Allegheny Surveys Inc. (ASI) is not certifying the data and information provided. ASI is not responsible for any errors or inaccuracies with the data and information that has been provided.

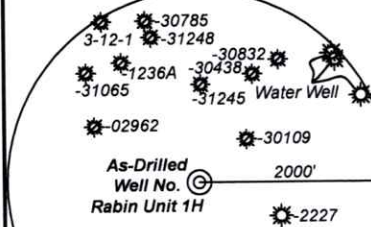
I, the undersigned, hereby certify that this plat is correct to the best of my knowledge and belief and shows all the information required by law and the rules issued and prescribed by the Department of Environmental Protection.

Bradley D. Miller, P.S. 2167



SEAL

	Bearing	Dist.
L1	S 79°57' E	2,008.3'
L2	S 28°55' W	618.1'
L3	S 76°46' W	865.3'
L4	N 70°07' W	1,034.7'

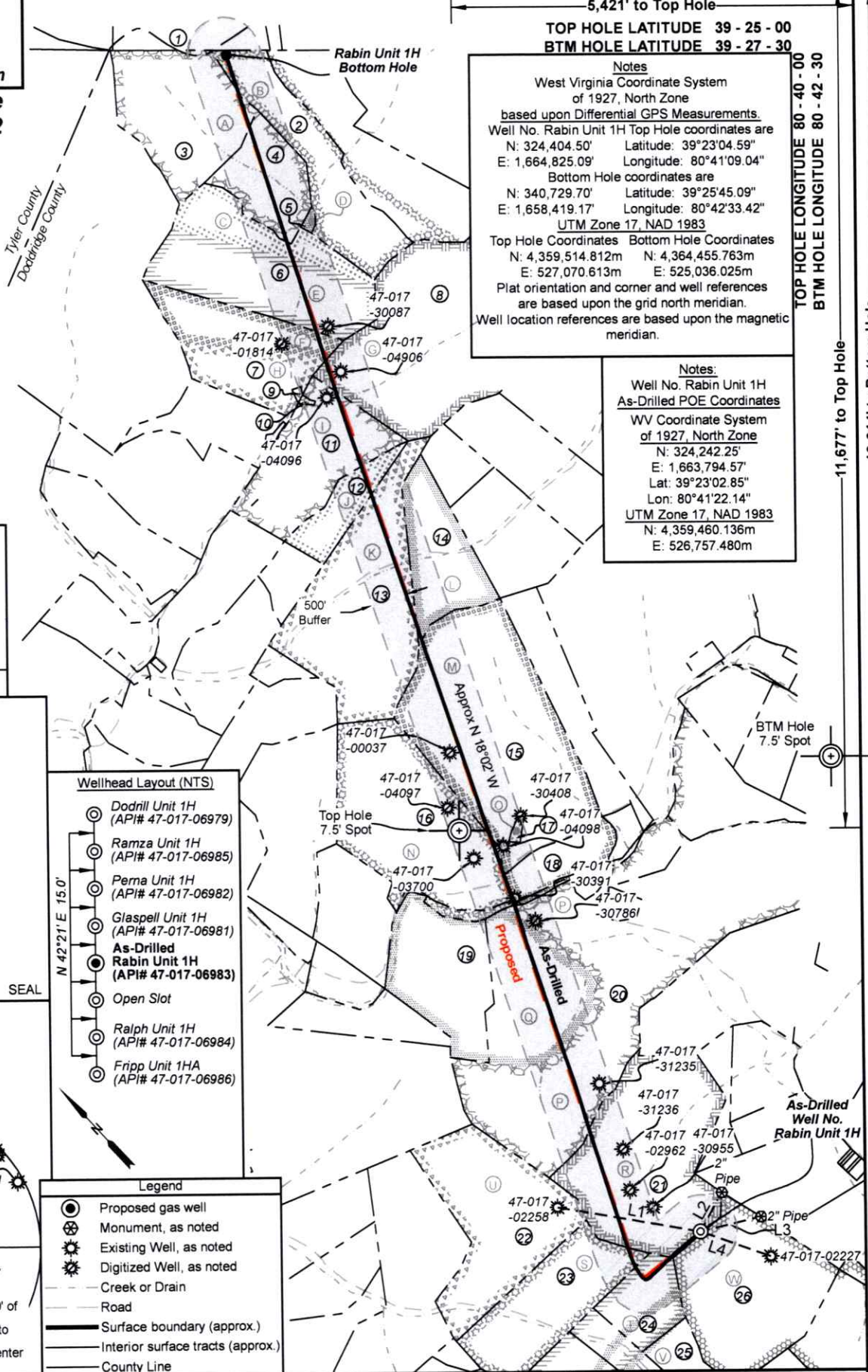


Note: 3 water wells were found within 2000' of proposed well. No occupied dwellings or buildings 2,500 square feet or larger used to house or shelter dairy cattle or poultry husbandry are located within 625' of the center of the well pad.

Wellhead Layout (NTS)

- Dodrill Unit 1H (API# 47-017-06979)
- Ramza Unit 1H (API# 47-017-06985)
- Perna Unit 1H (API# 47-017-06982)
- Glaspell Unit 1H (API# 47-017-06981)
- As-Drilled Rabin Unit 1H (API# 47-017-06983)
- Open Slot
- Ralph Unit 1H (API# 47-017-06984)
- Fripp Unit 1HA (API# 47-017-06986)

- Legend
- Proposed gas well
 - ⊗ Monument, as noted
 - ⊙ Existing Well, as noted
 - ⊙ Digitized Well, as noted
 - - - Creek or Drain
 - Road
 - Surface boundary (approx.)
 - Interior surface tracts (approx.)
 - County Line



Notes
West Virginia Coordinate System of 1927, North Zone based upon Differential GPS Measurements.
Well No. Rabin Unit 1H Top Hole coordinates are
N: 324,404.50' Longitude: 39°23'04.59"
E: 1,664,825.09' Longitude: 80°41'09.04"
Bottom Hole coordinates are
N: 340,729.70' Longitude: 39°25'45.09"
E: 1,658,419.17' Longitude: 80°42'33.42"
UTM Zone 17, NAD 1983
Top Hole Coordinates Bottom Hole Coordinates
N: 4,359,514.812m N: 4,364,455.763m
E: 527,070.613m E: 525,036.025m
Plat orientation and corner and well references are based upon the grid north meridian.
Well location references are based upon the magnetic meridian.

Notes:
Well No. Rabin Unit 1H As-Drilled POE Coordinates
WV Coordinate System of 1927, North Zone
N: 324,242.25'
E: 1,663,794.57'
Lat: 39°23'02.85"
Lon: 80°41'22.14"
UTM Zone 17, NAD 1983
N: 4,359,460.136m
E: 526,757.480m

FILE NO: 268-30-M-22
DRAWING NO: Rabin 1H As-Drilled
SCALE: 1" = 2000'
MINIMUM DEGREE OF ACCURACY: Submeter
PROVEN SOURCE OF ELEVATION: WVDOT, Harrisville, WV

STATE OF WEST VIRGINIA
DEPARTMENT OF ENVIRONMENTAL PROTECTION
OIL AND GAS DIVISION

DATE: October 17 20 25
OPERATOR'S WELL NO. Rabin 1H
API WELL NO
47 - 017 - 06983
STATE COUNTY PERMIT

WELL TYPE: OIL GAS LIQUID INJECTION WASTE DISPOSAL
(IF GAS) PRODUCTION: STORAGE DEEP SHALLOW

LOCATION: ELEVATION: As-Built: 1,222' WATERSHED: McElroy Creek QUADRANGLE: Center Point
DISTRICT: McClellan Shawn A. COUNTY: Doddridge
SURFACE OWNER: Glaspell ACREAGE: 100
ROYALTY OWNER: Minda Allen LEASE NO: ACREAGE: 100
PROPOSED WORK: DRILL CONVERT DRILL DEEPER FRACTURE OR STIMULATE PLUG OFF OLD FORMATION
 PERFORATE NEW FORMATION OTHER PHYSICAL CHANGE IN WELL (SPECIFY) As-Drilled
 PLUG AND ABANDON CLEAN OUT AND REPLUG TARGET FORMATION: Marcellus Shale ESTIMATED DEPTH: 7,208' TVD 24,873' MD

WELL OPERATOR: Antero Resources Corporation DESIGNATED AGENT: Conrad Baston
ADDRESS: 1615 Wynkoop Street ADDRESS: 535 White Oaks Blvd.
Denver, CO 80202 Bridgeport, WV 26330

03/13/2026



Leases	
A	Robert L. Wolfe
B	Carole Hanlon
C	Deborah Ann Cox
D	Robert L. Wolfe
E	Jefferson Minerals, LLC
F	Ed Broome, Inc.
G	O.W.O Hardman, et al
H	Grace Olive Rudder
I	N.M. Laughery, et al
J	Jacqueline L. Wichman Trust
K	Jay Bee Production Company, et al
L	Sandra S. Riffle
M	Antero Minerals, LLC
N	Donald R. Reynolds
O	Successor Trustees of the Underwood Cemetery
P	Donald R. Reynolds
Q	Donald R. Reynolds
R	Minda Allen
S	Thomas H. Downs
T	Robert O. Hopkins
U	W. S. & Nannie L. Stuart
V	Arthur G. Doak, et al
W	Morris Mountaineer Oil & Gas, LLC

ID	TM-Par	Owner	Bk/Pg	Acres
1	12-28	Garnett M. Ferrebee	WB24/333	107.00
2	5-2	Robert L. Wolfe	274/668	56.71
3	5-1	Robert L. Wolfe	231/560	58.00
4	5-9	Robert L. Wolfe	231/560	32.75
5	5-2.1	Robert L. Wolfe	231/464	1.09
6	5-10	Kevin E. & Elizabeth A. Denny	287/49	88.89
7	5-11	Edward F. & Grace O. Rudder	244/30	53.76
8	5-8	Coastal Forest Resources Co.	260/135	175.00
9	5-11.2	Edward F. Rudder, et ux	172/531	0.37
10	11-35	Edward M. Rudder, et al	WB94/431	0.37
11	5-11.1	Grace Olive Rudder	WB42/130	60.63
12	11-5.2	James B. & Hazel I. Lemasters	143/118	21.50
13	11-5	James B. & Hazel I. Lemasters	143/118	108.00
14	11-6	W.I. & Martha Ferrebee & Mary K. & Paul Baker	28/375	39.93
15	11-14	Charles W. Yeager III	312/354	150.00
16	11-24	Barbara M. Swiger	WB59/593	90.83
17	11-14.1	Underwood Cemetery	---/---	0.23
18	11-14.2	Jason Lee Travis	310/280	18.66
19	11-33	Mary Lea Gaspell	WB33/513	50.00
20	11-34	Shawn A. Gaspell	271/230	254.51
21	17-3.3	Shawn A. Gaspell	283/601	100.00
22	17-9	John M. & Connie S. Underwood Irrevocable Trust	294/401	84.00
23	17-13	Shawn A. Gaspell	468/444	65.00
24	17-16	Faith L. Fry	238/167	36.84
25	17-18	Faith L. Fry	238/167	80.14
26	17-3.2	Shawn A. Gaspell	283/601	135.00

FILE NO: 268-30-M-22
 DRAWING NO: Rabin 1H As-Drilled
 SCALE: 1" = 2000'
 MINIMUM DEGREE OF ACCURACY:
Submeter
 PROVEN SOURCE OF ELEVATION:
WVDOT, Harrisville, WV

STATE OF WEST VIRGINIA
 DEPARTMENT OF ENVIRONMENTAL PROTECTION
OIL AND GAS DIVISION



DATE: October 17 2025
 OPERATOR'S WELL NO. Rabin 1H
 API WELL NO
47 - 017 - 06983
 STATE COUNTY PERMIT

WELL TYPE: OIL GAS LIQUID INJECTION WASTE DISPOSAL
 (IF GAS) PRODUCTION: STORAGE DEEP SHALLOW

LOCATION: ELEVATION: As-Built: 1,222' WATERSHED: McElroy Creek QUADRANGLE: Center Point
 DISTRICT: McClellan COUNTY: Doddridge
 SURFACE OWNER: Shawn A. Gaspell ACREAGE: 100
 ROYALTY OWNER: Minda Allen LEASE NO: _____ ACREAGE: 100
 PROPOSED WORK: DRILL CONVERT DRILL DEEPER FRACTURE OR STIMULATE PLUG OFF OLD FORMATION
 PERFORATE NEW FORMATION OTHER PHYSICAL CHANGE IN WELL (SPECIFY) As-Drilled
 PLUG AND ABANDON CLEAN OUT AND REPLUG TARGET FORMATION: Marcellus Shale ESTIMATED DEPTH: 7,208' TVD 24,873' MD

WELL OPERATOR: Antero Resources Corporation DESIGNATED AGENT: Conrad Baston
 ADDRESS: 1615 Wynkoop Street ADDRESS: 535 White Oaks Blvd.
Denver, CO 80202 Bridgeport, WV 26330

Hydraulic Fracturing Fluid Product Component Information Disclosure

Job Start Date:	03/10/2025
Job End Date:	04/26/2025
State:	West Virginia
County:	Doddridge
API Number:	47-017-06983-00-00
Operator Name:	Antero Resources Corporation
Well Name and Number:	RABIN UNIT 1H
Latitude:	39.384699
Longitude:	-80.685671
Datum:	WGS84
Federal Well:	NO
Indian Well:	NO
True Vertical Depth:	7230
Total Base Water Volume (gal)*:	26689762
Total Base Non Water Volume:	0



Water Source	Percent
Produced Water	100.00%

RECEIVED
Office of Oil and Gas
OCT 29 2025
WV Department of
Environmental Protection

Hydraulic Fracturing Fluid Composition:

Trade Name	Supplier	Purpose	Ingredients	Chemical Abstract Service Number (CAS #)	Maximum Ingredient Concentration in Additive (% by mass)**	Maximum Ingredient Concentration in HF Fluid (% by mass)**	Comments
Excelerate LX-21	Halliburton	Friction Reducer					
FDP-S1470-23	Halliburton	Friction Reducer					
HAI-501	Halliburton	Acid Corrosion Inhibitor					
HYDROCHLORIC ACID, 22 BAUME	Halliburton	Solvent					
LCA-1	Halliburton	Solvent					
MC B-8123	MultiChem	Biocide					
OPTIFLO-II DELAYED RELEASE BREAKER	Halliburton	Breaker					
Produced Water (Density 8.8)	Operator	Base Fluid					
Sand-Common White-100 Mesh, SSA-2	Halliburton	Proppant					

03/13/2026

OCT 29 2025

WV Department of
Environmental Protection

Sand-Premium White-40/70	Halliburton	Proppant					
WG-36 GELLING AGENT	Halliburton	Gelling Agent					

Items above are Trade Names. Items below are the individual ingredients.

			Water	7732-18-5	100.00000	86.81042	None
			Crystalline silica, quartz	14808-60-7	100.00000	12.99615	None
			Water	7732-18-5	100.00000	0.15797	None
			Hydrochloric acid	7647-01-0	30.00000	0.03750	None
			Complex amine compound	Proprietary	60.00000	0.02193	None
			Ethanaminium, N,N,N-trimethyl-2-(1-oxo-2-propen-1-yl)oxy-, chloride (1:1), polymer with 2-propenamide	69418-26-4	60.00000	0.01109	None
			Hydrotreated distillate	Proprietary	100.00000	0.01097	None
			Hydrotreated light petroleum distillates	64742-47-8	30.00000	0.00555	None
			Guar gum	9000-30-0	100.00000	0.00516	None
			Ammonium chloride	12125-02-9	5.00000	0.00275	None
			Glutaraldehyde	111-30-8	30.00000	0.00236	None
			Fatty nitrogen derived amides	Proprietary	5.00000	0.00183	None
			Ethoxylated alcohol	Proprietary	5.00000	0.00183	None
			Amides, tall-oil fatty, N,N-bis(hydroxyethyl)	68155-20-4	5.00000	0.00092	None
			Ethoxylated branched C13 alcohol	78330-21-9	5.00000	0.00092	None
			Sorbitan monooleate polyoxyethylene derivative	9005-65-6	1.00000	0.00055	None
			Quaternary ammonium compounds, benzyl-C12-16-alkyldimethyl, chlorides	68424-85-1	5.00000	0.00039	None
			Sorbitan, mono-9-octadecenoate, (Z)	1338-43-8	1.00000	0.00037	None
			Methanol	67-56-1	100.00000	0.00023	None
			Sorbitan, mono-9-octadecenoate, (Z)	1338-43-8	1.00000	0.00018	None
			Ammonium persulfate	7727-54-0	100.00000	0.00015	None
			Citric acid	77-92-9	1.00000	0.00008	None
			Mixture of dimer and trimer fatty acids of	61790-12-3	30.00000	0.00007	None

03/13/2026

			indefinite composition derived from tall oil				
			Modified thiourea polymer	Proprietary	30.00000	0.00007	None
			Oxylated phenolic resin	Proprietary	30.00000	0.00004	None
			Propargyl alcohol	107-19-7	5.00000	0.00001	None
			Hexadecene	629-73-2	5.00000	0.00001	None
			Ethoxylated alcohols	Proprietary	5.00000	0.00001	None
			C.I. pigment Orange 5	3468-63-1	1.00000	0.00000	None

* Total Water Volume sources may include various types of water including fresh water, produced water, and recycled water

** Information is based on the maximum potential for concentration and thus the total may be over 100%

Note: For Field Development Products (products that begin with FDP), MSDS level only information has been provided.

Ingredient information for chemicals subject to 29 CFR 1910.1200(i) and Appendix D are obtained from suppliers Material Safety Data Sheets (MSDS)

RECEIVED
Office of Oil and Gas

OCT 29 2025

WV Department of
Environmental Protection

03/13/2026