



ANTERO RESOURCES CORPORATION

Location: Doddridge Co., WV
 Field: Doddridge
 Facility: Crimson Pad

Slot: Slot C
 Well: Rabin Unit 1H
 Wellbore: Rabin Unit 1H PWB

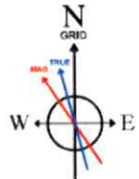
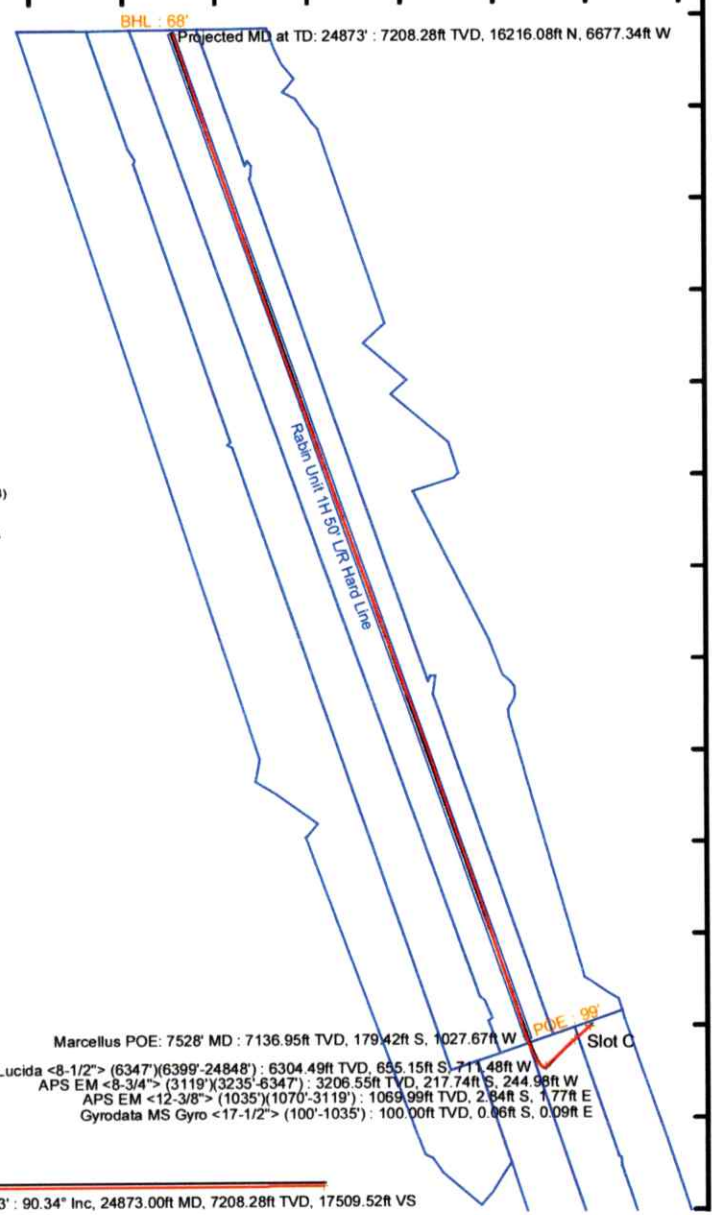
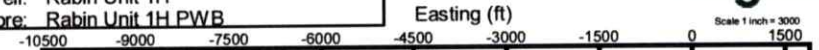


Plot reference wellpath is Rabin Unit 1H PWP Rev-B.0	Grid System: NAD27 / UTM Zone 17 North, US feet
True vertical depths are referenced to H&P 317 (RKB)	North Reference: Grid north
Reference wellpath measured depths are referenced to H&P 317 (RKB)	Scale: True distance
H&P 317 (RKB) to Mean Sea Level: 1247.5 feet	Coordinates are in feet referenced to Slot
Mean Sea Level to Ground level (At Slot: Slot C): -1222 feet	Depths are in feet
Offset wellpath MDs are referenced to each path's default MD datum	Created by: edkaynar on 2024-10-06, Database: WA_MP_EASTERNUS_Deln

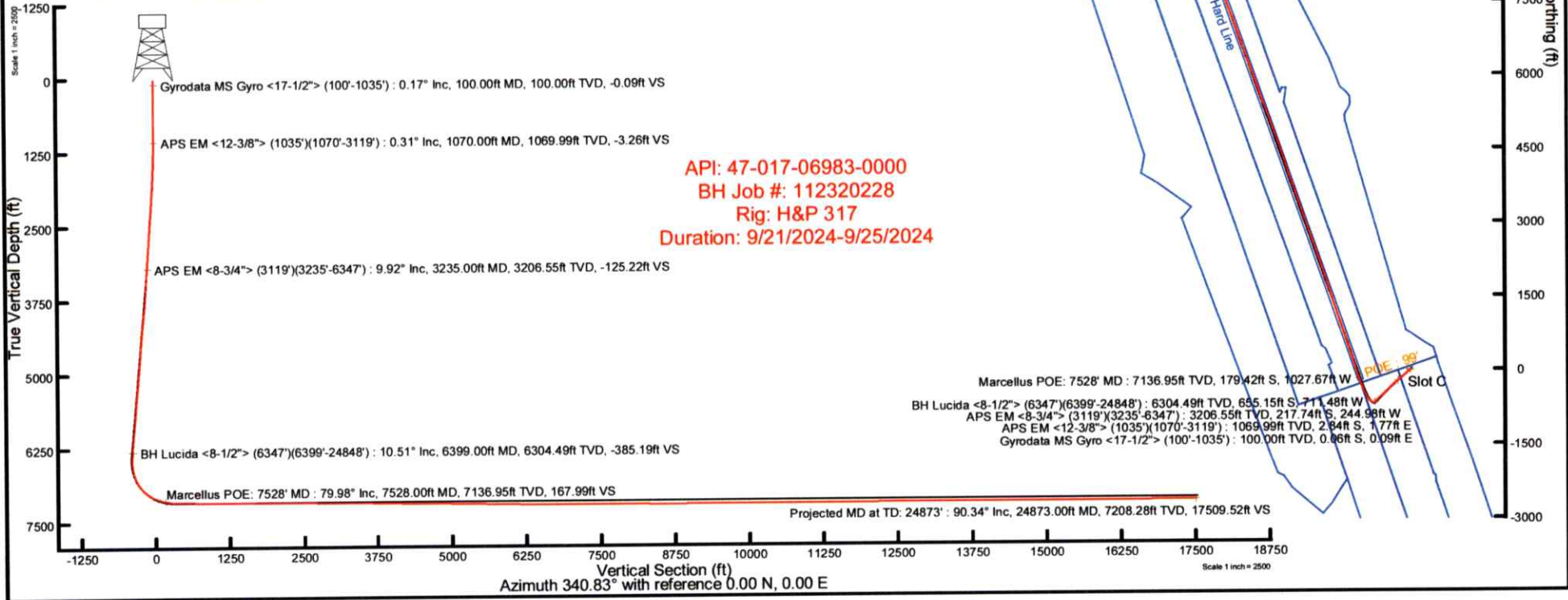
Location Information					
Facility Name	Grid East (US ft)	Grid North (US ft)	Latitude	Longitude	
Crimson Pad	1729192.990	14302137.140	39°23'4.7014"N	80°41'8.9159"W	
Slot	Local N (ft)	Local E (ft)	Grid East (US ft)	Grid North (US ft)	Latitude
Slot C	-11.25	-9.92	1729183.070	14302125.890	39°23'4.5905"N
Comment	Rabin Unit 1H				
H&P 317 (RKB) to Ground level (At Slot: Slot C)	25.5ft				
Mean Sea Level to Ground level (At Slot: Slot C)	-1222ft				
H&P 317 (RKB) to Mean Sea Level	1247.5ft				

Well Profile Data								
Design Comment	MD (ft)	Inc. (°)	Az. (°)	TVD (ft)	Local N (ft)	Local E (ft)	DLS (°/100ft)	VS (ft)
Tie On	3119.00	10.780	227.270	3092.44	-202.95	-230.33	0.75	-116.06
Proj. to Bottom	3190.00	10.780	227.270	3162.19	-211.96	-240.06	0.00	-121.37
Drill Out	3270.00	10.780	227.270	3240.77	-222.11	-251.07	0.00	-127.35
End of 3D Arc	3318.71	11.685	225.424	3288.55	-228.66	-257.93	2.00	-131.29
Curve KOP	6490.20	11.685	225.424	6394.31	-679.50	-715.50	0.00	-406.87
POE	7490.95	74.817	340.827	7141.00	-216.63	-992.97	8.00	121.45
Landing Pt.	7660.74	90.000	340.827	7166.00	-39.45	-1054.57	8.00	309.03
BHL	24904.22	90.000	340.827	7166.00	16226.67	-6711.14	0.00	17532.51

Well Data			
Slot	Well	Wellbore	Wellpath
Slot C	Rabin Unit 1H	Rabin Unit 1H AWB	Rabin Unit 1H AWP Proj: 24873'
Slot C	Rabin Unit 1H	Rabin Unit 1H PWB	Rabin Unit 1H PWP Rev-B.0



User specified (HDGM) Dip: 66.13° Field: 51637 nT
 Magnetic North is 7.96 degrees West of True North (at 9/17/2024)
 Grid North is 0.20 degrees East of True North
 To correct azimuth from True to Grid subtract 0.20 degrees
 To correct azimuth from Magnetic to Grid subtract 8.16 degrees





Actual Wellpath Report

Rabin Unit 1H AWP Proj: 24873'
Page 1 of 13



REFERENCE WELLPATH IDENTIFICATION			
Operator	ANTERO RESOURCES CORPORATION	Well	Rabin Unit 1H
Field	Doddridge	API	47-017-06983-0000
Facility	Crimson Pad	Wellbore	Rabin Unit 1H AWB
Slot	Slot C		

REPORT SETUP INFORMATION			
Projection System	NAD27 / UTM Zone 17 North, US feet	Software System	WellArchitect® 6.0
North Reference	Grid	User	Edsaryar
Scale	0.999609	Report Generated	10/6/2024 at 5:53:41 PM
Convergence at slot	0.20° East	Database	WA_MPL_EASTERNUS_Defn

WELLPATH LOCATION						
	Local coordinates		Grid coordinates		Geographic coordinates	
	North[ft]	East[ft]	Easting[US ft]	Northing[US ft]	Latitude	Longitude
Slot Location	-11.25	-9.92	1729183.07	14302125.89	39°23'4.5905"N	80°41'9.0428"W
Facility Reference Pt			1729192.99	14302137.14	39°23'4.7014"N	80°41'8.9159"W
Field Reference Pt			0.00	0.00	0°00'0.0000"	85°29'19.3013"W

WELLPATH DATUM			
Calculation method	Minimum curvature	H&P 317 (RKB) to Facility Vertical Datum	1247.50ft
Horizontal Reference Pt	Slot	H&P 317 (RKB) to Mean Sea Level	1247.50ft
Vertical Reference Pt	H&P 317 (RKB)	H&P 317 (RKB) to Ground Level at Slot (Slot C)	25.50ft
MD Reference Pt	H&P 317 (RKB)	Section Origin	N 0.00, E 0.00 ft
Field Vertical Reference	Mean Sea Level	Section Azimuth	340.83°

RECEIVED
Office of Oil and Gas
OCT 29 2025
WV Department of
Environmental Protection



Actual Wellpath Report

Rabin Unit 1H AWP Proj: 24873'
Page 2 of 13



REFERENCE WELLPATH IDENTIFICATION			
Operator	ANTERO RESOURCES CORPORATION	Well	Rabin Unit 1H
Field	Doddridge	API	47-017-06983-0000
Facility	Crimson Pad	Wellbore	Rabin Unit 1H AWB
Slot	Slot C		

WELLPATH DATA (271 stations) † = interpolated, ‡ = extrapolated station																
MD [ft]	Inclination [°]	Azimuth [°]	TVD [ft]	Vert Sect [ft]	North [ft]	East [ft]	Grid East [US ft]	Grid North [US ft]	Latitude	Longitude	Closure Dist [ft]	Closure Dir [°]	DLS ["/100ft]	Build Rate ["/100ft]	Turn Rate ["/100ft]	Comments
0.00†	0.000	125.960	0.00	0.00	0.00	0.00	1729183.07	14302125.89	39°23'4.5905"N	80°41'9.0428"W	0.00	0.000	0.00	0.00	0.00	
25.50	0.000	125.960	25.50	0.00	0.00	0.00	1729183.07	14302125.89	39°23'4.5905"N	80°41'9.0428"W	0.00	0.000	0.00	0.00	0.00	
100.00	0.170	125.960	100.00	-0.09	-0.06	0.09	1729183.16	14302125.83	39°23'4.5898"N	80°41'9.0416"W	0.11	125.960	0.23	0.23	0.00	Gyrodata MS Gyro <17-1/2"> (100'-1035')
200.00	0.140	139.740	200.00	-0.33	-0.25	0.29	1729183.36	14302125.64	39°23'4.5881"N	80°41'9.0391"W	0.38	130.368	0.05	-0.03	13.78	
300.00	0.210	170.020	300.00	-0.62	-0.52	0.40	1729183.47	14302125.37	39°23'4.5853"N	80°41'9.0377"W	0.65	142.431	0.11	0.07	30.28	
400.00	0.170	162.170	400.00	-0.95	-0.84	0.48	1729183.55	14302125.05	39°23'4.5822"N	80°41'9.0367"W	0.97	150.461	0.05	-0.04	-7.85	
500.00	0.220	146.680	500.00	-1.28	-1.14	0.63	1729183.70	14302124.75	39°23'4.5792"N	80°41'9.0348"W	1.30	151.228	0.07	0.05	-15.49	
600.00	0.130	145.580	600.00	-1.58	-1.40	0.80	1729183.87	14302124.49	39°23'4.5767"N	80°41'9.0327"W	1.61	150.287	0.09	-0.09	-1.10	
700.00	0.160	181.520	700.00	-1.82	-1.63	0.86	1729183.93	14302124.26	39°23'4.5744"N	80°41'9.0319"W	1.84	152.251	0.09	0.03	35.94	
800.00	0.260	151.340	800.00	-2.18	-1.97	0.96	1729184.03	14302123.92	39°23'4.5710"N	80°41'9.0306"W	2.19	153.942	0.15	0.10	-30.18	
900.00	0.210	129.390	900.00	-2.56	-2.28	1.21	1729184.28	14302123.61	39°23'4.5679"N	80°41'9.0274"W	2.59	152.026	0.10	-0.05	-21.95	
1000.00	0.260	136.790	999.99	-2.92	-2.57	1.51	1729184.58	14302123.33	39°23'4.5651"N	80°41'9.0237"W	2.98	149.520	0.06	0.05	7.40	
1035.00	0.340	143.910	1034.99	-3.09	-2.71	1.63	1729184.69	14302123.18	39°23'4.5637"N	80°41'9.0222"W	3.16	149.018	0.25	0.23	20.34	
1070.00	0.310	122.450	1069.99	-3.26	-2.84	1.77	1729184.84	14302123.05	39°23'4.5623"N	80°41'9.0204"W	3.35	148.135	0.36	-0.09	-61.31	APS EM <12-3/8"> (1035')(1070'-3119')
1165.00	1.230	205.450	1164.99	-4.19	-3.90	1.55	1729184.61	14302121.99	39°23'4.5519"N	80°41'9.0233"W	4.20	158.389	1.30	0.97	87.37	
1260.00	3.020	218.560	1259.92	-6.25	-6.78	-0.45	1729182.62	14302119.11	39°23'4.5235"N	80°41'9.0488"W	6.79	183.824	1.94	1.88	13.80	
1354.00	3.490	218.690	1353.77	-9.10	-10.95	-3.79	1729179.29	14302114.95	39°23'4.4824"N	80°41'9.0915"W	11.58	199.072	0.50	0.50	0.14	
1448.00	4.180	226.350	1447.55	-12.04	-15.55	-8.05	1729175.02	14302110.35	39°23'4.4371"N	80°41'9.1460"W	17.51	207.384	0.91	0.73	8.15	
1543.00	6.080	231.570	1542.17	-15.13	-21.06	-14.50	1729168.58	14302104.84	39°23'4.3828"N	80°41'9.2284"W	25.57	214.543	2.06	2.00	5.49	
1637.00	8.150	231.210	1635.44	-19.01	-28.33	-23.59	1729159.49	14302097.57	39°23'4.3113"N	80°41'9.3445"W	36.87	219.786	2.20	2.20	-0.38	
1731.00	10.160	233.280	1728.24	-23.75	-37.46	-35.43	1729147.65	14302088.44	39°23'4.2214"N	80°41'9.4957"W	51.57	223.404	2.17	2.14	2.20	
1826.00	10.510	233.220	1821.70	-28.90	-47.66	-49.09	1729134.00	14302078.25	39°23'4.1211"N	80°41'9.6701"W	68.42	225.845	0.37	0.37	-0.06	
1920.00	9.960	229.530	1914.20	-34.45	-58.07	-62.14	1729120.95	14302067.84	39°23'4.0187"N	80°41'9.8367"W	85.05	226.939	0.91	-0.59	-3.93	
2014.00	10.880	230.670	2006.65	-40.46	-68.97	-75.19	1729107.91	14302056.95	39°23'3.9114"N	80°41'10.0034"W	102.03	227.469	1.00	0.98	1.21	
2109.00	10.860	229.320	2099.95	-46.83	-80.49	-88.91	1729094.20	14302045.44	39°23'3.7981"N	80°41'10.1787"W	119.93	227.847	0.27	-0.02	-1.42	
2203.00	10.320	227.630	2192.35	-53.39	-91.93	-101.85	1729081.26	14302033.99	39°23'3.6854"N	80°41'10.3439"W	137.20	227.928	0.66	-0.57	-1.80	
2297.00	10.170	225.610	2284.85	-60.24	-103.41	-114.00	1729069.12	14302022.52	39°23'3.5723"N	80°41'10.4992"W	153.91	227.787	0.41	-0.16	-2.15	
2392.00	11.090	230.090	2378.22	-67.05	-115.14	-127.00	1729056.12	14302010.79	39°23'3.4568"N	80°41'10.6653"W	171.42	227.803	1.30	0.97	4.72	
2486.00	10.830	230.620	2470.50	-73.31	-126.55	-140.76	1729042.37	14301999.39	39°23'3.3446"N	80°41'10.8410"W	189.28	228.044	0.30	-0.28	0.56	
2581.00	10.350	229.470	2563.89	-79.50	-137.75	-154.14	1729028.99	14301988.19	39°23'3.2343"N	80°41'11.0120"W	206.73	228.214	0.55	-0.51	-1.21	

RECEIVED
Office of Oil and Gas

OCT 29 2025

WV Department of
Environmental Protection



Actual Wellpath Report

Rabin Unit 1H AWP Proj: 24873'

Page 3 of 13



REFERENCE WELLPATH IDENTIFICATION

Operator	ANTERO RESOURCES CORPORATION	Well	Rabin Unit 1H
Field	Doddridge	API	47-017-06983-0000
Facility	Crimson Pad	Wellbore	Rabin Unit 1H AWB
Slot	Slot C		

WELLPATH DATA (271 stations)

MD [ft]	Inclination [°]	Azimuth [°]	TVD [ft]	Vert Sect [ft]	North [ft]	East [ft]	Grid East [US ft]	Grid North [US ft]	Latitude	Longitude	Closure Dist [ft]	Closure Dir [°]	DLS [°/100ft]	Build Rate [°/100ft]	Turn Rate [°/100ft]	Comments
2675.00	10.020	226.990	2656.40	-85.88	-148.82	-166.54	1729016.59	14301977.13	39°23'3.1254"N	80°41'11.1704"W	223.35	228.217	0.58	-0.35	-2.64	
2770.00	10.770	230.000	2749.85	-92.38	-160.16	-179.39	1729003.76	14301965.79	39°23'3.0137"N	80°41'11.3344"W	240.48	228.240	0.97	0.79	3.17	
2864.00	10.560	230.550	2842.22	-98.48	-171.28	-192.76	1728990.38	14301954.68	39°23'2.9043"N	80°41'11.5053"W	257.87	228.377	0.25	-0.22	0.59	
2959.00	11.440	231.370	2935.48	-104.64	-182.69	-206.85	1728976.30	14301943.27	39°23'2.7919"N	80°41'11.6852"W	275.98	228.548	0.94	0.93	0.86	
3053.00	11.190	228.710	3027.65	-111.18	-194.53	-220.98	1728962.17	14301931.43	39°23'2.6754"N	80°41'11.8657"W	294.41	228.642	0.62	-0.27	-2.83	
3119.00	10.780	227.270	3092.44	-116.06	-202.95	-230.33	1728952.83	14301923.02	39°23'2.5926"N	80°41'11.9851"W	306.98	228.616	0.75	-0.62	-2.18	
3235.00	9.920	221.940	3206.55	-125.22	-217.74	-244.98	1728938.19	14301908.24	39°23'2.4469"N	80°41'12.1723"W	327.76	228.368	1.11	-0.74	-4.59	APS EM <8-3/4"> (3119')(3235'-6347')
3329.00	9.760	231.000	3299.18	-131.84	-228.78	-256.58	1728926.59	14301897.20	39°23'2.3382"N	80°41'12.3206"W	343.76	228.278	1.65	-0.17	9.64	
3423.00	10.240	231.670	3391.75	-137.28	-238.97	-269.33	1728913.85	14301887.01	39°23'2.2378"N	80°41'12.4834"W	360.06	228.417	0.53	0.51	0.71	
3518.00	11.450	232.690	3485.05	-142.99	-249.93	-283.45	1728899.73	14301876.06	39°23'2.1301"N	80°41'12.6637"W	377.90	228.596	1.29	1.27	1.07	
3612.00	13.210	232.410	3576.88	-149.29	-262.13	-299.38	1728883.80	14301863.86	39°23'2.0100"N	80°41'12.8672"W	397.93	228.795	1.87	1.87	-0.30	
3706.00	13.160	230.860	3668.40	-156.34	-275.44	-316.19	1728867.00	14301850.56	39°23'1.8790"N	80°41'13.0819"W	419.34	228.940	0.38	-0.05	-1.65	
3801.00	12.350	228.170	3761.06	-163.95	-289.04	-332.15	1728851.05	14301836.96	39°23'1.7451"N	80°41'13.2857"W	440.31	228.970	1.06	-0.85	-2.83	
3895.00	11.830	225.570	3852.97	-171.93	-302.49	-346.52	1728836.68	14301823.52	39°23'1.6127"N	80°41'13.4693"W	459.98	228.881	0.80	-0.55	-2.77	
3989.00	13.060	225.820	3944.76	-180.53	-316.64	-361.02	1728822.19	14301809.37	39°23'1.4734"N	80°41'13.6546"W	480.21	228.747	1.31	1.31	0.27	
4083.00	12.930	226.760	4036.35	-189.31	-331.25	-376.30	1728806.92	14301794.77	39°23'1.3295"N	80°41'13.8498"W	501.32	228.643	0.26	-0.14	1.00	
4178.00	12.160	221.920	4129.09	-198.48	-345.97	-390.73	1728792.50	14301780.05	39°23'1.1845"N	80°41'14.0342"W	521.89	228.476	1.37	-0.81	-5.09	
4272.00	12.330	226.280	4220.95	-207.44	-360.28	-404.60	1728778.63	14301765.76	39°23'1.0436"N	80°41'14.2114"W	541.75	228.316	1.00	0.18	4.64	
4366.00	11.020	225.010	4313.00	-215.52	-373.57	-418.20	1728765.03	14301752.47	39°23'0.9127"N	80°41'14.3853"W	560.75	228.227	1.42	-1.39	-1.35	
4461.00	9.420	219.580	4406.50	-223.51	-385.98	-429.58	1728753.66	14301740.06	39°23'0.7904"N	80°41'14.5308"W	577.51	228.060	1.96	-1.68	-5.72	
4555.00	10.110	224.650	4499.14	-231.14	-397.78	-440.28	1728742.96	14301728.27	39°23'0.6742"N	80°41'14.6675"W	593.36	227.903	1.17	0.73	5.39	
4649.00	11.630	231.030	4591.45	-237.99	-409.61	-453.44	1728729.80	14301716.45	39°23'0.5577"N	80°41'14.8357"W	611.06	227.908	2.06	1.62	6.79	
4743.00	12.670	229.610	4683.34	-244.93	-422.24	-468.66	1728714.59	14301703.81	39°23'0.4333"N	80°41'15.0301"W	630.82	227.983	1.15	1.11	-1.51	
4838.00	11.370	225.140	4776.26	-252.77	-435.60	-483.24	1728700.02	14301690.46	39°23'0.3018"N	80°41'15.2163"W	650.59	227.968	1.68	-1.37	-4.71	
4932.00	12.480	225.190	4868.23	-261.18	-449.30	-497.01	1728686.25	14301676.77	39°23'0.1669"N	80°41'15.3923"W	669.99	227.887	1.18	1.18	0.05	
5026.00	11.150	219.970	4960.24	-270.24	-463.42	-510.06	1728673.21	14301662.65	39°23'0.0278"N	80°41'15.5591"W	689.14	227.743	1.81	-1.41	-5.55	
5120.00	10.530	222.750	5052.56	-278.94	-476.69	-521.73	1728661.55	14301649.38	39°22'59.8970"N	80°41'15.7083"W	706.71	227.582	0.86	-0.66	2.96	
5214.00	11.190	225.570	5144.88	-286.88	-489.39	-534.07	1728649.21	14301636.70	39°22'59.7720"N	80°41'15.8660"W	724.38	227.500	0.90	0.70	3.00	
5309.00	11.850	227.840	5237.96	-294.62	-502.39	-547.88	1728635.40	14301623.70	39°22'59.6439"N	80°41'16.0425"W	743.35	227.480	0.84	0.69	2.39	
5403.00	13.260	228.450	5329.71	-302.49	-516.02	-563.11	1728620.19	14301610.08	39°22'59.5098"N	80°41'16.2370"W	763.78	227.499	1.51	1.50	0.65	

RECEIVED
Office of Oil and Gas

OCT 29 2025

WV Department of
Environmental Protection



Actual Wellpath Report

Rabin Unit 1H AWP Proj: 24873'
Page 4 of 13



REFERENCE WELLPATH IDENTIFICATION

Operator	ANTERO RESOURCES CORPORATION	Well	Rabin Unit 1H
Field	Doddridge	API	47-017-06983-0000
Facility	Crimson Pad	Wellbore	Rabin Unit 1H AWB
Slot	Slot C		

WELLPATH DATA (271 stations) † = interpolated, ‡ = extrapolated station

MD [ft]	Inclination [°]	Azimuth [°]	TVD [ft]	Vert Sect [ft]	North [ft]	East [ft]	Grid East [US ft]	Grid North [US ft]	Latitude	Longitude	Closure Dist [ft]	Closure Dir [°]	DLS ["/100ft]	Build Rate ["/100ft]	Turn Rate ["/100ft]	Comments
5498.00	13.200	228.080	5422.19	-310.84	-530.49	-579.33	1728603.97	14301595.61	39°22'59.3673"N	80°41'16.4443"W	785.52	227.520	0.11	-0.06	-0.39	
5592.00	10.620	223.290	5514.16	-318.99	-543.97	-593.26	1728590.05	14301582.14	39°22'59.2345"N	80°41'16.6222"W	804.89	227.482	2.94	-2.74	-5.10	
5686.00	10.940	226.740	5606.51	-326.64	-556.38	-605.69	1728577.62	14301569.72	39°22'59.1122"N	80°41'16.7811"W	822.45	227.430	0.77	0.34	3.67	
5780.00	13.410	230.290	5698.39	-334.11	-569.46	-620.58	1728562.74	14301556.65	39°22'58.9835"N	80°41'16.9713"W	842.26	227.459	2.74	2.63	3.78	
5875.00	13.480	227.910	5790.78	-342.28	-583.92	-637.27	1728546.05	14301542.20	39°22'58.8411"N	80°41'17.1845"W	864.34	227.501	0.59	0.07	-2.51	
5969.00	11.210	223.710	5882.61	-350.72	-597.87	-651.71	1728531.61	14301528.25	39°22'58.7037"N	80°41'17.3691"W	884.41	227.467	2.60	-2.41	-4.47	
6063.00	10.610	223.130	5974.91	-358.90	-610.79	-663.94	1728519.39	14301515.34	39°22'58.5764"N	80°41'17.5254"W	902.16	227.388	0.65	-0.64	-0.62	
6157.00	11.080	220.290	6067.23	-367.52	-624.00	-675.70	1728507.63	14301502.14	39°22'58.4463"N	80°41'17.6757"W	919.75	227.278	0.76	0.50	-3.02	
6252.00	11.780	226.230	6160.35	-376.19	-637.67	-688.61	1728494.73	14301488.47	39°22'58.3116"N	80°41'17.8407"W	938.51	227.199	1.44	0.74	6.25	
6347.00	11.330	235.540	6253.43	-382.69	-649.66	-703.31	1728480.04	14301476.48	39°22'58.1936"N	80°41'18.0284"W	957.44	227.271	2.02	-0.47	9.80	
6399.00	10.510	236.720	6304.49	-385.19	-655.15	-711.48	1728471.87	14301470.99	39°22'58.1396"N	80°41'18.1328"W	967.18	227.360	1.63	-1.58	2.27	BH Lucida <8-1/2"> (6347')(6399'-24848')
6443.00	10.820	234.290	6347.73	-387.35	-659.77	-718.19	1728465.16	14301466.38	39°22'58.0943"N	80°41'18.2184"W	975.24	227.428	1.24	0.70	-5.52	
6537.00	11.140	241.460	6440.01	-391.34	-669.26	-733.33	1728450.02	14301456.90	39°22'58.0010"N	80°41'18.4117"W	992.81	227.616	1.49	0.34	7.63	
6632.00	11.320	275.690	6533.29	-388.91	-672.72	-750.69	1728432.67	14301453.43	39°22'57.9674"N	80°41'18.6329"W	1008.01	228.135	6.92	0.19	36.03	
6726.00	15.900	300.890	6624.71	-375.14	-665.18	-770.95	1728412.42	14301460.97	39°22'58.0425"N	80°41'18.8905"W	1018.25	229.212	7.86	4.87	26.81	
6820.00	21.620	311.080	6713.70	-350.21	-647.17	-795.08	1728388.30	14301478.97	39°22'58.2214"N	80°41'19.1970"W	1025.18	230.855	6.99	6.09	10.84	
6853.00†	23.654	315.795	6744.16	-338.93	-638.43	-804.28	1728379.11	14301487.71	39°22'58.3081"N	80°41'19.3138"W	1026.87	231.558	8.26	6.16	14.29	Sycamore: 6853' MD
6915.00	27.780	322.800	6800.02	-313.90	-617.99	-821.70	1728361.69	14301508.14	39°22'58.5107"N	80°41'19.5348"W	1028.16	233.053	8.26	6.65	11.30	
7009.00	36.580	326.190	6879.51	-265.87	-577.19	-850.59	1728332.82	14301548.93	39°22'58.9149"N	80°41'19.9009"W	1027.93	235.840	9.55	9.36	3.61	
7021.00†	37.769	326.476	6889.07	-258.85	-571.15	-854.61	1728328.80	14301554.96	39°22'58.9747"N	80°41'19.9518"W	1027.90	236.244	10.01	9.91	2.38	Middlesex: 7021' MD
7058.00	41.440	327.270	6917.57	-235.97	-551.40	-867.49	1728315.92	14301574.70	39°22'59.1704"N	80°41'20.1150"W	1027.90	237.559	10.01	9.92	2.15	
7103.00	45.560	329.440	6950.21	-205.73	-525.03	-883.72	1728299.70	14301601.07	39°22'59.4316"N	80°41'20.3205"W	1027.92	239.285	9.74	9.16	4.82	
7198.00	54.560	333.580	7011.15	-133.93	-461.02	-918.26	1728265.17	14301665.05	39°23'0.0654"N	80°41'20.7576"W	1027.49	243.341	10.04	9.47	4.36	
7236.00†	57.592	336.193	7032.36	-102.57	-432.47	-931.63	1728251.81	14301693.59	39°23'0.3480"N	80°41'20.9266"W	1027.11	245.099	9.81	7.98	6.88	Burkett: 7236' MD
7292.00	62.150	339.740	7060.47	-54.22	-387.58	-949.76	1728233.69	14301738.46	39°23'0.7923"N	80°41'21.1555"W	1025.80	247.800	9.81	8.14	6.33	
7294.00†	62.301	339.736	7061.40	-52.45	-385.92	-950.37	1728233.08	14301740.12	39°23'0.8087"N	80°41'21.1632"W	1025.74	247.899	7.55	7.55	-0.21	Tully: 7294' MD
7387.00	69.320	339.550	7099.48	32.31	-306.44	-979.86	1728203.59	14301819.57	39°23'1.5953"N	80°41'21.5354"W	1026.66	252.634	7.55	7.55	-0.20	
7481.00	76.260	339.180	7127.28	122.02	-222.46	-1011.49	1728171.97	14301903.52	39°23'2.4264"N	80°41'21.9345"W	1035.67	257.596	7.39	7.38	-0.39	
7528.00	79.980	339.630	7136.95	167.99	-179.42	-1027.67	1728155.81	14301946.55	39°23'2.8524"N	80°41'22.1386"W	1043.21	260.097	7.97	7.91	0.96	Marcellus POE: 7528' MD
7575.00	80.040	339.780	7145.10	214.27	-136.00	-1043.72	1728139.76	14301989.94	39°23'3.2820"N	80°41'22.3412"W	1052.55	262.576	0.34	0.13	0.32	

RECEIVED
Office of Oil and Gas

OCT 29 2025

WV Department of
Environmental Protection



Actual Wellpath Report

Rabin Unit 1H AWP Proj: 24873'
Page 5 of 13



REFERENCE WELLPATH IDENTIFICATION

Operator	ANTERO RESOURCES CORPORATION	Well	Rabin Unit 1H
Field	Doddridge	API	47-017-06983-0000
Facility	Crimson Pad	Wellbore	Rabin Unit 1H AWB
Slot	Slot C		

WELLPATH DATA (271 stations)

MD [ft]	Inclination [°]	Azimuth [°]	TVD [ft]	Vert Sect [ft]	North [ft]	East [ft]	Grid East [US ft]	Grid North [US ft]	Latitude	Longitude	Closure Dist [ft]	Closure Dir [°]	DLS ["/100ft]	Build Rate ["/100ft]	Turn Rate ["/100ft]	Comments
7670.00	85.530	343.770	7157.03	308.45	-46.53	-1073.16	1728110.33	14302079.38	39°23'4.1673"N	80°41'22.7122"W	1074.17	267.517	7.12	5.78	4.20	
7764.00	89.910	342.200	7160.77	402.28	43.26	-1100.64	1728082.86	14302169.13	39°23'5.0557"N	80°41'23.0583"W	1101.49	272.251	4.95	4.66	-1.67	
7858.00	90.060	341.670	7160.80	496.26	132.63	-1129.79	1728053.72	14302258.46	39°23'5.9399"N	80°41'23.4256"W	1137.55	276.695	0.59	0.16	-0.56	
7953.00	89.480	341.690	7161.18	591.25	222.81	-1159.65	1728023.87	14302348.61	39°23'6.8323"N	80°41'23.8019"W	1180.86	280.876	0.61	-0.61	0.02	
8048.00	88.800	340.830	7162.61	686.24	312.76	-1190.17	1727993.37	14302438.53	39°23'7.7223"N	80°41'24.1867"W	1230.58	284.724	1.15	-0.72	-0.91	
8142.00	89.290	341.310	7164.17	780.22	401.67	-1220.66	1727962.89	14302527.40	39°23'8.6020"N	80°41'24.5711"W	1285.05	288.214	0.73	0.52	0.51	
8237.00	89.660	341.690	7165.04	875.21	491.75	-1250.80	1727932.76	14302617.45	39°23'9.4934"N	80°41'24.9510"W	1344.00	291.462	0.56	0.39	0.40	
8331.00	89.540	341.960	7165.70	969.20	581.06	-1280.12	1727903.45	14302706.72	39°23'10.3771"N	80°41'25.3206"W	1405.82	294.414	0.31	-0.13	0.29	
8426.00	89.600	341.990	7166.41	1064.17	671.40	-1309.52	1727874.07	14302797.02	39°23'11.2709"N	80°41'25.6910"W	1471.60	297.144	0.07	0.06	0.03	
8520.00	89.600	341.580	7167.07	1158.16	760.68	-1338.90	1727844.70	14302886.27	39°23'12.1544"N	80°41'26.0613"W	1539.90	299.603	0.44	0.00	-0.44	
8615.00	89.420	341.590	7167.88	1253.15	850.81	-1368.91	1727814.70	14302976.37	39°23'13.0462"N	80°41'26.4396"W	1611.77	301.862	0.19	-0.19	0.01	
8709.00	89.660	341.940	7168.64	1347.13	940.09	-1398.32	1727785.30	14303065.61	39°23'13.9296"N	80°41'26.8103"W	1684.95	303.913	0.45	0.26	0.37	
8803.00	89.600	341.720	7169.24	1441.11	1029.40	-1427.63	1727756.00	14303154.89	39°23'14.8133"N	80°41'27.1797"W	1760.06	305.794	0.24	-0.06	-0.23	
8897.00	89.600	340.690	7169.90	1535.11	1118.39	-1457.92	1727725.73	14303243.84	39°23'15.6938"N	80°41'27.5615"W	1837.47	307.492	1.10	0.00	-1.10	
8991.00	89.600	341.930	7170.55	1629.10	1207.43	-1488.04	1727695.62	14303332.84	39°23'16.5748"N	80°41'27.9413"W	1916.28	309.057	1.32	0.00	1.32	
9086.00	89.720	342.740	7171.12	1724.07	1297.94	-1516.86	1727666.80	14303423.32	39°23'17.4704"N	80°41'28.3045"W	1996.38	310.553	0.86	0.13	0.85	
9180.00	89.380	341.730	7171.86	1818.03	1387.46	-1545.54	1727638.13	14303512.80	39°23'18.3561"N	80°41'28.6659"W	2076.96	311.915	1.13	-0.36	-1.07	
9274.00	89.510	342.180	7172.77	1912.01	1476.83	-1574.66	1727609.03	14303602.14	39°23'19.2404"N	80°41'29.0328"W	2158.84	313.164	0.50	0.14	0.48	
9369.00	89.510	341.910	7173.58	2006.99	1567.20	-1603.94	1727579.76	14303692.47	39°23'20.1346"N	80°41'29.4018"W	2242.49	314.336	0.28	0.00	-0.28	
9558.00	89.540	343.610	7175.15	2195.87	1747.70	-1659.96	1727523.77	14303872.90	39°23'21.9204"N	80°41'30.1074"W	2410.37	316.475	0.90	0.02	0.90	
9652.00	89.630	342.250	7175.83	2289.80	1837.55	-1687.55	1727496.19	14303962.72	39°23'22.8094"N	80°41'30.4549"W	2494.88	317.437	1.45	0.10	-1.45	
9747.00	89.600	340.690	7176.47	2384.79	1927.62	-1717.74	1727466.01	14304052.75	39°23'23.7006"N	80°41'30.8355"W	2581.92	318.295	1.64	-0.03	-1.64	
9841.00	89.630	341.020	7177.10	2478.78	2016.42	-1748.56	1727435.19	14304141.52	39°23'24.5793"N	80°41'31.2243"W	2668.97	319.069	0.35	0.03	0.35	
9936.00	89.540	340.950	7177.79	2573.78	2106.23	-1779.52	1727404.25	14304231.29	39°23'25.4680"N	80°41'31.6146"W	2757.33	319.806	0.12	-0.09	-0.07	
10030.00	89.450	340.780	7178.61	2667.78	2195.04	-1810.33	1727373.45	14304320.06	39°23'26.3467"N	80°41'32.0032"W	2845.25	320.486	0.20	-0.10	-0.18	
10124.00	89.450	340.640	7179.52	2761.77	2283.75	-1841.38	1727342.42	14304408.75	39°23'27.2246"N	80°41'32.3948"W	2933.63	321.121	0.15	0.00	-0.15	
10218.00	89.540	340.530	7180.35	2855.77	2372.41	-1872.62	1727311.18	14304497.36	39°23'28.1019"N	80°41'32.7889"W	3022.42	321.715	0.15	0.10	-0.12	
10312.00	89.600	341.030	7181.05	2949.77	2461.16	-1903.57	1727280.25	14304586.09	39°23'28.9801"N	80°41'33.1792"W	3111.41	322.280	0.54	0.06	0.53	
10407.00	89.510	341.040	7181.79	3044.76	2551.00	-1934.44	1727249.39	14304675.89	39°23'29.8691"N	80°41'33.5685"W	3201.51	322.827	0.10	-0.09	0.01	
10501.00	89.480	341.240	7182.62	3138.76	2639.95	-1964.83	1727219.02	14304764.81	39°23'30.7493"N	80°41'33.9517"W	3290.88	323.341	0.22	-0.03	0.21	

RECEIVED
Office of Oil and Gas

OCT 29 2025

WV Department of
Environmental Protection



Actual Wellpath Report

Rabin Unit 1H AWP Proj: 24873'

Page 6 of 13



REFERENCE WELLPATH IDENTIFICATION

Operator	ANTERO RESOURCES CORPORATION	Well	Rabin Unit 1H
Field	Doddridge	API	47-017-06983-0000
Facility	Crimson Pad	Wellbore	Rabin Unit 1H AWB
Slot	Slot C		

WELLPATH DATA (271 stations)

MD [ft]	Inclination [°]	Azimuth [°]	TVD [ft]	Vert Sect [ft]	North [ft]	East [ft]	Grid East [US ft]	Grid North [US ft]	Latitude	Longitude	Closure Dist [ft]	Closure Dir [°]	DLS [°/100ft]	Build Rate [°/100ft]	Turn Rate [°/100ft]	Comments
10596.00	89.450	340.440	7183.50	3233.75	2729.69	-1996.00	1727187.85	14304854.50	39°23'31.6372"N	80°41'34.3449"W	3381.60	323.825	0.84	-0.03	-0.84	
10690.00	89.630	341.330	7184.26	3327.75	2818.50	-2026.78	1727157.08	14304943.28	39°23'32.5160"N	80°41'34.7331"W	3471.57	324.280	0.97	0.19	0.95	
10785.00	89.570	341.070	7184.92	3422.74	2908.43	-2057.40	1727126.48	14305033.18	39°23'33.4059"N	80°41'35.1192"W	3562.56	324.725	0.28	-0.06	-0.27	
10879.00	89.480	341.170	7185.70	3516.74	2997.37	-2087.81	1727096.08	14305122.08	39°23'34.2859"N	80°41'35.5027"W	3652.83	325.141	0.14	-0.10	0.11	
10973.00	89.570	341.030	7186.48	3610.74	3086.30	-2118.26	1727065.64	14305210.97	39°23'35.1659"N	80°41'35.8867"W	3743.30	325.536	0.18	0.10	-0.15	
11068.00	88.400	340.730	7188.16	3705.72	3176.04	-2149.37	1727034.54	14305300.68	39°23'36.0539"N	80°41'36.2791"W	3834.98	325.912	1.27	-1.23	-0.32	
11162.00	89.450	341.100	7189.93	3799.70	3264.86	-2180.10	1727003.82	14305389.46	39°23'36.9327"N	80°41'36.6666"W	3925.83	326.267	1.18	1.12	0.39	
11256.00	89.570	340.890	7190.73	3893.70	3353.73	-2210.71	1726973.23	14305478.30	39°23'37.8121"N	80°41'37.0527"W	4016.81	326.608	0.26	0.13	-0.22	
11350.00	88.120	340.080	7192.63	3987.67	3442.31	-2242.11	1726941.85	14305566.85	39°23'38.6887"N	80°41'37.4487"W	4108.11	326.922	1.77	-1.54	-0.86	
11445.00	89.290	341.020	7194.77	4082.64	3531.86	-2273.73	1726910.23	14305656.36	39°23'39.5748"N	80°41'37.8477"W	4200.46	327.228	1.58	1.23	0.99	
11539.00	88.460	339.600	7196.62	4176.62	3620.35	-2305.39	1726878.58	14305744.81	39°23'40.4504"N	80°41'38.2472"W	4292.06	327.511	1.75	-0.88	-1.51	
11728.00	89.230	341.700	7200.43	4365.57	3798.62	-2368.00	1726816.00	14305923.02	39°23'42.2145"N	80°41'39.0369"W	4476.27	328.061	1.18	0.41	1.11	
11822.00	88.800	340.140	7202.04	4459.55	3887.44	-2398.72	1726785.29	14306011.80	39°23'43.0934"N	80°41'39.4244"W	4567.94	328.324	1.72	-0.46	-1.66	
11916.00	89.970	341.370	7203.05	4553.54	3976.18	-2429.70	1726754.32	14306100.51	39°23'43.9715"N	80°41'39.8152"W	4659.77	328.572	1.81	1.24	1.31	
12105.00	90.650	343.310	7202.03	4742.46	4156.26	-2487.03	1726697.01	14306280.52	39°23'45.7532"N	80°41'40.5377"W	4843.54	329.104	1.09	0.36	1.03	
12200.00	89.230	341.260	7202.13	4837.43	4246.75	-2515.94	1726668.12	14306370.97	39°23'46.6485"N	80°41'40.9020"W	4936.07	329.356	2.62	-1.49	-2.16	
12294.00	89.260	341.350	7203.37	4931.41	4335.78	-2546.07	1726638.00	14306459.97	39°23'47.5295"N	80°41'41.2819"W	5028.07	329.578	0.10	0.03	0.10	
12389.00	89.170	341.220	7204.67	5026.40	4425.75	-2576.55	1726607.54	14306549.90	39°23'48.4197"N	80°41'41.6663"W	5121.12	329.793	0.17	-0.09	-0.14	
12484.00	89.140	341.360	7206.07	5121.39	4515.72	-2607.02	1726577.08	14306639.84	39°23'49.3099"N	80°41'42.0505"W	5214.24	330.001	0.15	-0.03	0.15	
12577.00	89.140	340.130	7207.47	5214.38	4603.51	-2637.68	1726546.43	14306727.59	39°23'50.1786"N	80°41'42.4374"W	5305.62	330.188	1.32	0.00	-1.32	
12672.00	89.350	340.130	7208.72	5309.36	4692.84	-2669.97	1726514.15	14306816.89	39°23'51.0626"N	80°41'42.8448"W	5399.21	330.363	0.22	0.22	0.00	
12766.00	89.200	340.210	7209.91	5403.35	4781.26	-2701.85	1726482.28	14306905.27	39°23'51.9376"N	80°41'43.2471"W	5491.86	330.530	0.18	-0.16	0.09	
12861.00	89.170	340.000	7211.26	5498.33	4870.58	-2734.18	1726449.97	14306994.56	39°23'52.8215"N	80°41'43.6551"W	5585.54	330.692	0.22	-0.03	-0.22	
12954.00	88.980	340.070	7212.76	5591.31	4957.98	-2765.93	1726418.23	14307081.92	39°23'53.6863"N	80°41'44.0557"W	5677.32	330.844	0.22	-0.20	0.08	
13049.00	89.230	340.170	7214.24	5686.29	5047.31	-2798.23	1726385.94	14307171.22	39°23'54.5703"N	80°41'44.4634"W	5771.09	330.996	0.28	0.26	0.11	
13143.00	89.200	340.140	7215.53	5780.27	5135.72	-2830.14	1726354.05	14307259.59	39°23'55.4451"N	80°41'44.8660"W	5863.90	331.142	0.05	-0.03	-0.03	
13237.00	89.140	339.610	7216.89	5874.25	5223.97	-2862.48	1726321.72	14307347.81	39°23'56.3184"N	80°41'45.2742"W	5956.81	331.279	0.57	-0.06	-0.56	
13331.00	89.200	339.870	7218.26	5968.22	5312.15	-2895.02	1726289.19	14307435.95	39°23'57.1910"N	80°41'45.6850"W	6049.80	331.410	0.28	0.06	0.28	
13425.00	89.170	340.060	7219.59	6062.20	5400.45	-2927.22	1726257.00	14307524.22	39°23'58.0648"N	80°41'46.0914"W	6142.76	331.541	0.20	-0.03	0.20	
13520.00	89.200	340.240	7220.94	6157.19	5489.79	-2959.48	1726224.76	14307613.53	39°23'58.9489"N	80°41'46.4984"W	6236.69	331.671	0.19	0.03	0.19	

RECEIVED
Office of Oil and Gas

OCT 29 2025

WV Department of
Environmental Protection



Actual Wellpath Report

Rabin Unit 1H AWP Proj: 24873'
Page 7 of 13


REFERENCE WELLPATH IDENTIFICATION

Operator	ANTERO RESOURCES CORPORATION	Well	Rabin Unit 1H
Field	Doddridge	API	47-017-06983-0000
Facility	Crimson Pad	Wellbore	Rabin Unit 1H AWP
Slot	Slot C		

WELLPATH DATA (271 stations)

MD [ft]	Inclination [°]	Azimuth [°]	TVD [ft]	Vert Sect [ft]	North [ft]	East [ft]	Grid East [US ft]	Grid North [US ft]	Latitude	Longitude	Closure Dist [ft]	Closure Dir [°]	DLS [°/100ft]	Build Rate [°/100ft]	Turn Rate [°/100ft]	Comments
13614.00	89.200	340.450	7222.26	6251.17	5578.31	-2991.09	1726193.15	14307702.01	39°23'59.8248"N	80°41'46.8973"W	6329.63	331.800	0.22	0.00	0.22	
13708.00	89.200	340.180	7223.57	6345.16	5666.81	-3022.75	1726161.51	14307790.47	39°24'0.7005"N	80°41'47.2968"W	6422.60	331.924	0.29	0.00	-0.29	
13803.00	89.200	340.000	7224.90	6440.14	5756.12	-3055.10	1726129.17	14307879.75	39°24'1.5843"N	80°41'47.7051"W	6516.64	332.043	0.19	0.00	-0.19	
13897.00	89.600	340.300	7225.88	6534.13	5844.53	-3087.02	1726097.27	14307968.12	39°24'2.4592"N	80°41'48.1079"W	6609.71	332.157	0.53	0.43	0.32	
13992.00	90.000	342.000	7226.21	6629.13	5934.43	-3117.71	1726066.58	14308057.99	39°24'3.3487"N	80°41'48.4950"W	6703.55	332.284	1.84	0.42	1.79	
14087.00	90.890	340.830	7225.47	6724.12	6024.47	-3147.99	1726036.32	14308147.99	39°24'4.2397"N	80°41'48.8768"W	6797.36	332.411	1.55	0.94	-1.23	
14181.00	89.970	340.030	7224.77	6818.11	6113.04	-3179.47	1726004.85	14308236.53	39°24'5.1160"N	80°41'49.2741"W	6890.45	332.520	1.30	-0.98	-0.85	
14275.00	90.030	340.360	7224.77	6912.10	6201.48	-3211.32	1725973.01	14308324.93	39°24'5.9912"N	80°41'49.6761"W	6983.62	332.623	0.36	0.06	0.35	
14370.00	90.120	341.460	7224.64	7007.10	6291.25	-3242.39	1725941.95	14308414.67	39°24'6.8795"N	80°41'50.0680"W	7077.64	332.734	1.16	0.09	1.16	
14464.00	89.970	340.350	7224.57	7101.10	6380.08	-3273.14	1725911.22	14308503.46	39°24'7.7584"N	80°41'50.4559"W	7170.69	332.841	1.19	-0.16	-1.18	
14558.00	90.030	340.110	7224.57	7195.10	6468.54	-3304.93	1725879.43	14308591.89	39°24'8.6338"N	80°41'50.8572"W	7263.92	332.936	0.26	0.06	-0.26	
14653.00	90.060	340.110	7224.50	7290.09	6557.87	-3337.25	1725847.13	14308681.18	39°24'9.5178"N	80°41'51.2651"W	7358.19	333.029	0.03	0.03	0.00	
14747.00	90.000	340.250	7224.45	7384.08	6646.30	-3369.13	1725815.27	14308769.58	39°24'10.3928"N	80°41'51.6673"W	7451.47	333.119	0.16	-0.06	0.15	
14841.00	89.970	340.330	7224.47	7478.08	6734.79	-3400.83	1725783.58	14308858.04	39°24'11.2685"N	80°41'52.0674"W	7544.74	333.208	0.09	-0.03	0.09	
14936.00	89.750	340.520	7224.70	7573.07	6824.30	-3432.66	1725751.76	14308947.51	39°24'12.1542"N	80°41'52.4691"W	7639.00	333.297	0.31	-0.23	0.20	
15030.00	89.780	340.340	7225.09	7667.07	6912.87	-3464.14	1725720.29	14309036.05	39°24'13.0306"N	80°41'52.8664"W	7732.28	333.384	0.19	0.03	-0.19	
15125.00	89.720	340.400	7225.50	7762.07	7002.35	-3496.06	1725688.39	14309125.49	39°24'13.9160"N	80°41'53.2692"W	7826.58	333.468	0.09	-0.06	0.06	
15219.00	89.850	340.460	7225.86	7856.06	7090.92	-3527.54	1725656.91	14309214.02	39°24'14.7924"N	80°41'53.6665"W	7919.89	333.551	0.15	0.14	0.06	
15313.00	89.780	340.170	7226.16	7950.06	7179.43	-3559.21	1725625.26	14309302.49	39°24'15.6682"N	80°41'54.0661"W	8013.25	333.630	0.32	-0.07	-0.31	
15407.00	89.720	340.750	7226.57	8044.06	7268.01	-3590.65	1725593.83	14309391.04	39°24'16.5448"N	80°41'54.4628"W	8106.59	333.709	0.62	-0.06	0.62	
15502.00	89.720	340.410	7227.03	8139.05	7357.60	-3622.23	1725562.26	14309480.60	39°24'17.4313"N	80°41'54.8614"W	8200.91	333.788	0.36	0.00	-0.36	
15596.00	88.950	339.720	7228.12	8233.04	7445.97	-3654.28	1725530.23	14309568.93	39°24'18.3057"N	80°41'55.2659"W	8294.35	333.859	1.10	-0.82	-0.73	
15691.00	89.780	340.390	7229.18	8328.02	7535.26	-3686.68	1725497.83	14309658.19	39°24'19.1893"N	80°41'55.6749"W	8388.79	333.929	1.12	0.87	0.71	
15785.00	89.690	340.330	7229.61	8422.02	7623.79	-3718.28	1725466.25	14309746.68	39°24'20.0654"N	80°41'56.0736"W	8482.20	334.001	0.12	-0.10	-0.06	
15879.00	90.150	340.490	7229.74	8516.02	7712.35	-3749.79	1725434.75	14309835.21	39°24'20.9417"N	80°41'56.4714"W	8575.62	334.071	0.52	0.49	0.17	
15974.00	90.060	339.860	7229.57	8611.01	7801.72	-3782.01	1725402.54	14309924.54	39°24'21.8260"N	80°41'56.8780"W	8670.09	334.137	0.67	-0.09	-0.66	
16068.00	90.060	340.530	7229.47	8705.00	7890.16	-3813.86	1725370.71	14310012.95	39°24'22.7011"N	80°41'57.2800"W	8763.57	334.202	0.71	0.00	0.71	
16163.00	90.030	340.470	7229.40	8800.00	7979.71	-3845.57	1725339.01	14310102.46	39°24'23.5873"N	80°41'57.6802"W	8858.00	334.270	0.07	-0.03	-0.06	
16257.00	90.120	340.540	7229.27	8894.00	8068.32	-3876.94	1725307.65	14310191.04	39°24'24.4641"N	80°41'58.0761"W	8951.45	334.335	0.12	0.10	0.07	
16352.00	90.090	340.690	7229.10	8989.00	8157.93	-3908.48	1725276.13	14310280.62	39°24'25.3508"N	80°41'58.4740"W	9045.89	334.401	0.16	-0.03	0.16	

RECEIVED
Office of Oil and Gas

OCT 29 2025

WV Department of
Environmental Protection



Actual Wellpath Report

Rabin Unit 1H AWP Proj: 24873'

Page 8 of 13



REFERENCE WELLPATH IDENTIFICATION

Operator	ANTERO RESOURCES CORPORATION	Well	Rabin Unit 1H
Field	Doddridge	API	47-017-06983-0000
Facility	Crimson Pad	Wellbore	Rabin Unit 1H AWB
Slot	Slot C		

WELLPATH DATA (271 stations)

MD [ft]	Inclination [°]	Azimuth [°]	TVD [ft]	Vert Sect [ft]	North [ft]	East [ft]	Grid East [US ft]	Grid North [US ft]	Latitude	Longitude	Closure Dist [ft]	Closure Dir [°]	DLS [°/100ft]	Build Rate [°/100ft]	Turn Rate [°/100ft]	Comments
16446.00	90.030	340.330	7229.00	9083.00	8246.55	-3939.84	1725244.78	14310369.20	39°24'26.2277"N	80°41'58.8698"W	9139.36	334.464	0.39	-0.06	-0.38	
16540.00	90.090	340.320	7228.90	9176.99	8335.06	-3971.49	1725213.14	14310457.67	39°24'27.1035"N	80°41'59.2692"W	9232.87	334.523	0.06	0.06	-0.01	
16635.00	90.090	340.350	7228.75	9271.99	8424.52	-4003.46	1725181.19	14310547.10	39°24'27.9887"N	80°41'59.6727"W	9327.39	334.582	0.03	0.00	0.03	
16729.00	90.090	340.200	7228.61	9365.98	8513.00	-4035.18	1725149.47	14310635.55	39°24'28.8643"N	80°42'0.0732"W	9420.93	334.639	0.16	0.00	-0.16	
16823.00	90.030	340.360	7228.51	9459.98	8601.49	-4066.90	1725117.77	14310724.00	39°24'29.7399"N	80°42'0.4735"W	9514.48	334.695	0.18	-0.06	0.17	
16918.00	90.150	340.470	7228.36	9554.98	8690.99	-4098.74	1725085.94	14310813.47	39°24'30.6255"N	80°42'0.8754"W	9609.01	334.751	0.17	0.13	0.12	
17012.00	90.090	340.340	7228.16	9648.97	8779.55	-4130.27	1725054.42	14310901.99	39°24'31.5018"N	80°42'1.2733"W	9702.56	334.806	0.15	-0.06	-0.14	
17106.00	90.090	340.420	7228.01	9742.97	8868.09	-4161.83	1725022.87	14310990.50	39°24'32.3780"N	80°42'1.6717"W	9796.12	334.859	0.09	0.00	0.09	
17200.00	90.310	340.150	7227.69	9836.97	8956.58	-4193.54	1724991.18	14311078.95	39°24'33.2536"N	80°42'2.0719"W	9889.70	334.911	0.37	0.23	-0.29	
17295.00	90.310	340.510	7227.17	9931.96	9046.04	-4225.52	1724959.21	14311168.37	39°24'34.1388"N	80°42'2.4755"W	9984.28	334.962	0.38	0.00	0.38	
17389.00	90.490	340.780	7226.52	10025.96	9134.72	-4256.67	1724928.07	14311257.02	39°24'35.0163"N	80°42'2.8687"W	10077.82	335.015	0.35	0.19	0.29	
17483.00	90.370	341.110	7225.81	10119.96	9223.57	-4287.36	1724897.40	14311345.83	39°24'35.8954"N	80°42'3.2559"W	10171.32	335.070	0.37	-0.13	0.35	
17578.00	90.310	341.210	7225.25	10214.95	9313.48	-4318.04	1724866.73	14311435.71	39°24'36.7850"N	80°42'3.6429"W	10265.78	335.126	0.12	-0.06	0.11	
17672.00	90.180	340.510	7224.84	10308.95	9402.28	-4348.86	1724835.92	14311524.47	39°24'37.6637"N	80°42'4.0318"W	10359.31	335.178	0.76	-0.14	-0.74	
17767.00	90.220	340.300	7224.51	10403.95	9491.78	-4380.72	1724804.08	14311613.94	39°24'38.5493"N	80°42'4.4340"W	10453.92	335.225	0.23	0.04	-0.22	
17861.00	90.280	340.620	7224.10	10497.94	9580.36	-4412.16	1724772.65	14311702.49	39°24'39.4259"N	80°42'4.8308"W	10547.53	335.272	0.35	0.06	0.34	
17955.00	90.150	340.000	7223.75	10591.94	9668.86	-4443.83	1724740.99	14311790.95	39°24'40.3016"N	80°42'5.2306"W	10641.17	335.316	0.67	-0.14	-0.66	
18050.00	90.250	340.300	7223.42	10686.93	9758.22	-4476.08	1724708.74	14311880.27	39°24'41.1858"N	80°42'5.6378"W	10735.84	335.359	0.33	0.11	0.32	
18144.00	90.120	340.590	7223.11	10780.93	9846.80	-4507.55	1724677.29	14311968.82	39°24'42.0623"N	80°42'6.0349"W	10829.47	335.403	0.34	-0.14	0.31	
18239.00	90.090	340.240	7222.94	10875.93	9936.30	-4539.39	1724645.46	14312058.29	39°24'42.9479"N	80°42'6.4368"W	10924.11	335.447	0.37	-0.03	-0.37	
18333.00	90.090	340.400	7222.79	10969.92	10024.81	-4571.05	1724613.82	14312146.76	39°24'43.8237"N	80°42'6.8364"W	11017.77	335.488	0.17	0.00	0.17	
18428.00	90.120	340.130	7222.62	11064.92	10114.23	-4603.13	1724581.75	14312236.14	39°24'44.7086"N	80°42'7.2414"W	11112.44	335.529	0.29	0.03	-0.28	
18522.00	90.150	340.030	7222.40	11158.91	10202.61	-4635.15	1724549.74	14312324.49	39°24'45.5831"N	80°42'7.6457"W	11206.15	335.567	0.11	0.03	-0.11	
18617.00	90.120	340.100	7222.17	11253.90	10291.91	-4667.54	1724517.36	14312413.76	39°24'46.4668"N	80°42'8.0546"W	11300.86	335.605	0.08	-0.03	0.07	
18711.00	90.120	340.350	7221.98	11347.90	10380.37	-4699.35	1724485.57	14312502.18	39°24'47.3421"N	80°42'8.4561"W	11394.56	335.643	0.27	0.00	0.27	
18805.00	90.120	339.940	7221.78	11441.89	10468.78	-4731.27	1724453.66	14312590.56	39°24'48.2169"N	80°42'8.8591"W	11488.27	335.680	0.44	0.00	-0.44	
18899.00	89.850	339.660	7221.80	11535.87	10557.00	-4763.73	1724421.21	14312678.74	39°24'49.0899"N	80°42'9.2690"W	11582.03	335.713	0.41	-0.29	-0.30	
18994.00	90.180	340.830	7221.78	11630.87	10646.41	-4795.84	1724389.12	14312768.11	39°24'49.9746"N	80°42'9.6743"W	11676.73	335.750	1.28	0.35	1.23	
19088.00	90.060	340.430	7221.58	11724.87	10735.09	-4827.02	1724357.95	14312856.76	39°24'50.8521"N	80°42'10.0678"W	11770.39	335.789	0.44	-0.13	-0.43	
19183.00	90.060	340.470	7221.48	11819.86	10824.61	-4858.81	1724326.17	14312946.24	39°24'51.7379"N	80°42'10.4691"W	11865.08	335.826	0.04	0.00	0.04	

RECEIVED
Office of Oil and Gas

OCT 29 2025

WV Department of
Environmental Protection



Actual Wellpath Report

Rabin Unit 1H AWP Proj: 24873'
Page 9 of 13



REFERENCE WELLPATH IDENTIFICATION

Operator	ANTERO RESOURCES CORPORATION	Well	Rabin Unit 1H
Field	Doddridge	API	47-017-06983-0000
Facility	Crimson Pad	Wellbore	Rabin Unit 1H AWB
Slot	Slot C		

WELLPATH DATA (271 stations)

MD [ft]	Inclination [°]	Azimuth [°]	TVD [ft]	Vert Sect [ft]	North [ft]	East [ft]	Grid East [US ft]	Grid North [US ft]	Latitude	Longitude	Closure Dist [ft]	Closure Dir [°]	DLS ["/100ft]	Build Rate ["/100ft]	Turn Rate ["/100ft]	Comments
19277.00	90.090	340.430	7221.36	11913.86	10913.19	-4890.26	1724294.73	14313034.79	39°24'52.6144"N	80°42'10.8662"W	11958.78	335.863	0.05	0.03	-0.04	
19371.00	90.090	340.320	7221.21	12007.86	11001.73	-4921.83	1724263.17	14313123.30	39°24'53.4905"N	80°42'11.2647"W	12052.49	335.898	0.12	0.00	-0.12	
19466.00	90.150	340.400	7221.01	12102.85	11091.20	-4953.76	1724231.25	14313212.73	39°24'54.3759"N	80°42'11.6678"W	12147.20	335.933	0.11	0.06	0.08	
19560.00	90.220	341.320	7220.71	12196.85	11180.00	-4984.58	1724200.45	14313301.50	39°24'55.2545"N	80°42'12.0568"W	12240.86	335.970	0.98	0.07	0.98	
19655.00	90.090	341.450	7220.45	12291.85	11270.03	-5014.91	1724170.13	14313391.49	39°24'56.1453"N	80°42'12.4394"W	12335.43	336.012	0.19	-0.14	0.14	
19749.00	90.090	341.360	7220.30	12385.84	11359.13	-5044.88	1724140.17	14313480.55	39°24'57.0268"N	80°42'12.8175"W	12429.02	336.053	0.10	0.00	-0.10	
19844.00	90.120	341.180	7220.13	12480.84	11449.10	-5075.39	1724109.68	14313570.49	39°24'57.9170"N	80°42'13.2025"W	12523.63	336.092	0.19	0.03	-0.19	
19938.00	90.060	341.220	7219.98	12574.84	11538.08	-5105.68	1724079.40	14313659.44	39°24'58.7975"N	80°42'13.5847"W	12617.26	336.130	0.08	-0.06	0.04	
20033.00	90.060	341.360	7219.88	12669.84	11628.06	-5136.15	1724048.94	14313749.38	39°24'59.6878"N	80°42'13.9692"W	12711.88	336.169	0.15	0.00	0.15	
20127.00	90.090	341.410	7219.76	12763.83	11717.14	-5166.16	1724018.94	14313838.43	39°25'0.5692"N	80°42'14.3478"W	12805.49	336.207	0.06	0.03	0.05	
20222.00	90.120	341.120	7219.59	12858.83	11807.11	-5196.67	1723988.44	14313928.36	39°25'1.4594"N	80°42'14.7328"W	12900.12	336.244	0.31	0.03	-0.31	
20316.00	90.120	341.370	7219.39	12952.82	11896.12	-5226.89	1723958.23	14314017.33	39°25'2.3401"N	80°42'15.1142"W	12993.77	336.280	0.27	0.00	0.27	
20410.00	90.120	341.370	7219.19	13046.82	11985.19	-5256.92	1723928.21	14314106.37	39°25'3.2214"N	80°42'15.4931"W	13087.40	336.317	0.00	0.00	0.00	
20505.00	90.090	341.470	7219.02	13141.82	12075.24	-5287.19	1723897.95	14314196.38	39°25'4.1124"N	80°42'15.8750"W	13182.03	336.354	0.11	-0.03	0.11	
20599.00	90.030	341.580	7218.92	13235.81	12164.39	-5316.98	1723868.18	14314285.50	39°25'4.9945"N	80°42'16.2509"W	13275.65	336.390	0.13	-0.06	0.12	
20693.00	90.120	341.260	7218.80	13329.80	12253.50	-5346.93	1723838.24	14314374.57	39°25'5.8761"N	80°42'16.6288"W	13369.29	336.425	0.35	0.10	-0.34	
20788.00	89.880	341.290	7218.80	13424.80	12343.47	-5377.43	1723807.75	14314464.51	39°25'6.7663"N	80°42'17.0136"W	13463.95	336.460	0.25	-0.25	0.03	
20882.00	89.880	341.100	7218.99	13518.80	12432.45	-5407.73	1723777.47	14314553.45	39°25'7.6467"N	80°42'17.3960"W	13557.63	336.492	0.20	0.00	-0.20	
20977.00	89.940	341.710	7219.14	13613.79	12522.49	-5438.02	1723747.18	14314643.46	39°25'8.5376"N	80°42'17.7782"W	13652.28	336.527	0.65	0.06	0.64	
21071.00	89.910	341.460	7219.27	13707.78	12611.68	-5467.72	1723717.50	14314732.61	39°25'9.4201"N	80°42'18.1529"W	13745.92	336.561	0.27	-0.03	-0.27	
21165.00	89.940	341.850	7219.39	13801.77	12700.90	-5497.30	1723687.93	14314821.80	39°25'10.3028"N	80°42'18.5261"W	13839.55	336.596	0.42	0.03	0.41	
21259.00	89.750	341.560	7219.64	13895.76	12790.15	-5526.81	1723658.43	14314911.01	39°25'11.1859"N	80°42'18.8984"W	13933.18	336.630	0.37	-0.20	-0.31	
21354.00	90.060	341.360	7219.80	13990.76	12880.22	-5557.02	1723628.24	14315001.04	39°25'12.0770"N	80°42'19.2796"W	14027.84	336.663	0.39	0.33	-0.21	
21448.00	90.030	341.420	7219.73	14084.75	12969.30	-5587.01	1723598.25	14315090.09	39°25'12.9585"N	80°42'19.6581"W	14121.53	336.694	0.07	-0.03	0.06	
21542.00	90.180	341.550	7219.56	14178.75	13058.43	-5616.86	1723568.41	14315179.19	39°25'13.8404"N	80°42'20.0347"W	14215.20	336.726	0.21	0.16	0.14	
21637.00	90.030	341.260	7219.38	14273.74	13148.48	-5647.16	1723538.13	14315269.20	39°25'14.7313"N	80°42'20.4170"W	14309.88	336.757	0.34	-0.16	-0.31	
21732.00	90.090	341.390	7219.28	14368.74	13238.47	-5677.58	1723507.72	14315359.16	39°25'15.6218"N	80°42'20.8009"W	14404.58	336.787	0.15	0.06	0.14	
21826.00	90.120	341.240	7219.11	14462.73	13327.52	-5707.69	1723477.62	14315448.17	39°25'16.5028"N	80°42'21.1809"W	14498.29	336.816	0.16	0.03	-0.16	
21920.00	90.060	341.420	7218.96	14556.73	13416.57	-5737.78	1723447.54	14315537.19	39°25'17.3839"N	80°42'21.5606"W	14592.00	336.845	0.20	-0.06	0.19	
22015.00	90.150	341.310	7218.79	14651.73	13506.59	-5768.14	1723417.20	14315627.17	39°25'18.2746"N	80°42'21.9437"W	14686.71	336.875	0.15	0.09	-0.12	

RECEIVED
Office of Oil and Gas

OCT 29 2025

WV Department of
Environmental Protection



Actual Wellpath Report

Rabin Unit 1H AWP Proj: 24873'
Page 10 of 13



REFERENCE WELLPATH IDENTIFICATION

Operator	ANTERO RESOURCES CORPORATION	Well	Rabin Unit 1H
Field	Doddridge	API	47-017-06983-0000
Facility	Crimson Pad	Wellbore	Rabin Unit 1H AWB
Slot	Slot C		

WELLPATH DATA (271 stations)

MD [ft]	Inclination [°]	Azimuth [°]	TVD [ft]	Vert Sect [ft]	North [ft]	East [ft]	Grid East [US ft]	Grid North [US ft]	Latitude	Longitude	Closure Dist [ft]	Closure Dir [°]	DLS [°/100ft]	Build Rate [°/100ft]	Turn Rate [°/100ft]	Comments
22109.00	90.060	341.310	7218.62	14745.72	13595.63	-5798.26	1723387.09	14315716.18	39°25'19.1556"N	80°42'22.3238"W	14780.43	336.903	0.10	-0.10	0.00	
22204.00	90.090	341.740	7218.49	14840.71	13685.74	-5828.36	1723357.00	14315806.25	39°25'20.0471"N	80°42'22.7037"W	14875.12	336.932	0.45	0.03	0.45	
22298.00	90.150	341.480	7218.29	14934.71	13774.94	-5858.02	1723327.35	14315895.41	39°25'20.9297"N	80°42'23.0779"W	14968.81	336.962	0.28	0.06	-0.28	
22392.00	90.060	341.330	7218.12	15028.70	13864.03	-5887.99	1723297.39	14315984.47	39°25'21.8112"N	80°42'23.4561"W	15062.53	336.989	0.19	-0.10	-0.16	
22486.00	90.090	341.270	7218.00	15122.70	13953.07	-5918.13	1723267.26	14316073.47	39°25'22.6922"N	80°42'23.8365"W	15156.27	337.016	0.07	0.03	-0.06	
22581.00	90.120	341.490	7217.82	15217.69	14043.09	-5948.46	1723236.94	14316163.47	39°25'23.5829"N	80°42'24.2193"W	15250.99	337.043	0.23	0.03	0.23	
22675.00	90.090	341.520	7217.65	15311.69	14132.24	-5978.28	1723207.14	14316252.58	39°25'24.4649"N	80°42'24.5955"W	15344.71	337.070	0.05	-0.03	0.03	
22770.00	90.030	341.230	7217.55	15406.68	14222.26	-6008.62	1723176.81	14316342.57	39°25'25.3557"N	80°42'24.9784"W	15439.44	337.097	0.31	-0.06	-0.31	
22864.00	90.120	341.230	7217.43	15500.68	14311.27	-6038.87	1723146.57	14316431.53	39°25'26.2363"N	80°42'25.3602"W	15533.20	337.122	0.10	0.10	0.00	
22959.00	90.060	341.460	7217.28	15595.68	14401.27	-6069.26	1723116.20	14316521.50	39°25'27.1268"N	80°42'25.7437"W	15627.94	337.148	0.25	-0.06	0.24	
23054.00	90.060	341.610	7217.18	15690.67	14491.38	-6099.35	1723086.12	14316611.58	39°25'28.0184"N	80°42'26.1234"W	15722.67	337.174	0.16	0.00	0.16	
23149.00	90.120	341.330	7217.03	15785.66	14581.46	-6129.54	1723055.94	14316701.62	39°25'28.9096"N	80°42'26.5044"W	15817.40	337.200	0.30	0.06	-0.29	
23243.00	90.150	341.510	7216.81	15879.66	14670.56	-6159.49	1723026.00	14316790.68	39°25'29.7912"N	80°42'26.8823"W	15911.15	337.225	0.19	0.03	0.19	
23338.00	90.030	341.360	7216.66	15974.65	14760.61	-6189.73	1722995.77	14316880.70	39°25'30.6822"N	80°42'27.2640"W	16005.89	337.250	0.20	-0.13	-0.16	
23433.00	90.120	341.800	7216.54	16069.64	14850.75	-6219.75	1722965.76	14316970.80	39°25'31.5740"N	80°42'27.6428"W	16100.62	337.275	0.47	0.09	0.46	
23527.00	90.280	341.140	7216.21	16163.64	14939.87	-6249.63	1722935.90	14317059.89	39°25'32.4558"N	80°42'28.0198"W	16194.37	337.300	0.72	0.17	-0.70	
23622.00	90.430	342.110	7215.62	16258.62	15030.03	-6279.57	1722905.97	14317150.01	39°25'33.3478"N	80°42'28.3977"W	16289.10	337.325	1.03	0.16	1.02	
23717.00	90.340	341.580	7214.98	16353.61	15120.29	-6309.17	1722876.38	14317240.24	39°25'34.2409"N	80°42'28.7712"W	16383.80	337.351	0.57	-0.09	-0.56	
23811.00	90.340	341.480	7214.42	16447.60	15209.45	-6338.95	1722846.61	14317329.36	39°25'35.1230"N	80°42'29.1470"W	16477.55	337.375	0.11	0.00	-0.11	
23906.00	90.340	341.240	7213.86	16542.59	15299.47	-6369.31	1722816.26	14317419.34	39°25'36.0137"N	80°42'29.5302"W	16572.32	337.398	0.25	0.00	-0.25	
24001.00	90.340	341.540	7213.30	16637.59	15389.50	-6399.63	1722785.95	14317509.34	39°25'36.9045"N	80°42'29.9129"W	16667.09	337.420	0.32	0.00	0.32	
24095.00	90.340	341.460	7212.74	16731.58	15478.64	-6429.46	1722756.14	14317598.45	39°25'37.7864"N	80°42'30.2893"W	16760.85	337.443	0.09	0.00	-0.09	
24190.00	90.370	341.440	7212.15	16826.57	15568.70	-6459.68	1722725.93	14317688.47	39°25'38.6775"N	80°42'30.6707"W	16855.62	337.466	0.04	0.03	-0.02	
24285.00	90.310	341.480	7211.59	16921.56	15658.77	-6489.89	1722695.74	14317778.50	39°25'39.5687"N	80°42'31.0519"W	16950.39	337.488	0.08	-0.06	0.04	
24379.00	90.400	341.420	7211.00	17015.56	15747.88	-6519.79	1722665.84	14317867.58	39°25'40.4504"N	80°42'31.4293"W	17044.16	337.510	0.12	0.10	-0.06	
24474.00	90.400	341.660	7210.34	17110.55	15837.99	-6549.87	1722635.77	14317957.66	39°25'41.3419"N	80°42'31.8090"W	17138.93	337.532	0.25	0.00	0.25	
24568.00	90.340	341.350	7209.73	17204.54	15927.14	-6579.69	1722605.97	14318046.77	39°25'42.2239"N	80°42'32.1853"W	17232.70	337.554	0.34	-0.06	-0.33	
24663.00	90.280	341.250	7209.22	17299.53	16017.12	-6610.15	1722575.52	14318136.72	39°25'43.1143"N	80°42'32.5697"W	17327.50	337.574	0.12	-0.06	-0.11	
24758.00	90.180	341.300	7208.84	17394.53	16107.09	-6640.64	1722545.04	14318226.65	39°25'44.0045"N	80°42'32.9547"W	17422.30	337.595	0.12	-0.11	0.05	
24848.00	90.340	341.450	7208.43	17484.52	16192.38	-6669.39	1722516.31	14318311.90	39°25'44.8483"N	80°42'33.3175"W	17512.10	337.614	0.24	0.18	0.17	

RECEIVED
Office of Oil and Gas

OCT 29 2025

WV Department of
Environmental Protection



Actual Wellpath Report

Rabin Unit 1H AWP Proj: 24873'
Page 11 of 13



REFERENCE WELLPATH IDENTIFICATION

Operator	ANTERO RESOURCES CORPORATION	Well	Rabin Unit 1H
Field	Doddridge	API	47-017-06983-0000
Facility	Crimson Pad	Wellbore	Rabin Unit 1H AWB
Slot	Slot C		

WELLPATH DATA (271 stations) † = interpolated, ‡ = extrapolated station

MD [ft]	Inclination [°]	Azimuth [°]	TVD [ft]	Vert Sect [ft]	North [ft]	East [ft]	Grid East [US ft]	Grid North [US ft]	Latitude	Longitude	Closure Dist [ft]	Closure Dir [°]	DLS [°/100ft]	Build Rate [°/100ft]	Turn Rate [°/100ft]	Comments
24873.00‡	90.340	341.450	7208.28	17509.52	16216.08	-6677.34	1722508.36	14318335.59	39°25'45.0828"N	80°42'33.4178"W	17537.05	337.619	0.00	0.00	0.00	Projected MD at TD: 24873'

HOLE & CASING SECTIONS - Ref Wellbore: Rabin Unit 1H AWB Ref Wellpath: Rabin Unit 1H AWP Proj: 24873'

String/Diameter	Start MD [ft]	End MD [ft]	Interval [ft]	Start TVD [ft]	End TVD [ft]	Start N/S [ft]	Start E/W [ft]	End N/S [ft]	End E/W [ft]
20in Conductor	25.50	125.50	100.00	25.50	125.50	0.00	0.00	-0.11	0.15
17.5in Open Hole	125.50	1051.00	925.50	125.50	1050.99	-0.11	0.15	-2.78	1.69
13.375in Casing Surface	25.50	1031.00	1005.50	25.50	1030.99	0.00	0.00	-2.69	1.61
12.375in Open Hole	1051.00	3190.00	2139.00	1050.99	3162.25	-2.78	1.69	-211.98	-239.60
9.625in Casing Intermediate	25.50	3160.00	3134.50	25.50	3132.74	0.00	0.00	-208.16	-235.80
8.75in Open Hole	3190.00	6424.00	3234.00	3162.25	6329.06	-211.98	-239.60	-657.72	-715.29
8.5in Open Hole	6424.00	24873.00	18449.00	6329.06	7208.28	-657.72	-715.29	16216.08	-6677.34
5.5in Casing Production	25.50	24853.00	24827.50	25.50	7208.40	0.00	0.00	16197.12	-6670.98

RECEIVED
Office of Oil and Gas

OCT 29 2025

WV Department of
Environmental Protection



Actual Wellpath Report

Rabin Unit 1H AWP Proj: 24873'
Page 12 of 13



REFERENCE WELLPATH IDENTIFICATION			
Operator	ANTERO RESOURCES CORPORATION	Well	Rabin Unit 1H
Field	Doddridge	API	47-017-06983-0000
Facility	Crimson Pad	Wellbore	Rabin Unit 1H AWB
Slot	Slot C		

TARGETS								
Name	TVD [ft]	North [ft]	East [ft]	Grid East [US ft]	Grid North [US ft]	Latitude	Longitude	Shape
Rabin Unit 1H POE Rev-2	7141.00	-216.63	-992.97	1728190.49	14301909.35	39°23'2.4834"N	80°41'21.6984"W	point
Rabin Unit 1H BHL Rev-2	7166.00	16228.67	-6711.14	1722474.57	14318348.18	39°25'45.2083"N	80°42'33.8481"W	point
Rabin Unit 1H LP Rev-2	7166.00	-39.45	-1054.57	1728128.91	14302086.45	39°23'4.2366"N	80°41'22.4752"W	point
Rabin Unit 1H 50' L/R Hard Line	7500.00	8006.02	-3852.05	1725332.53	14310128.77	39°24'23.8475"N	80°41'57.7616"W	rectangle
2D Rectangle 17411.1 x 100.								

WELLPATH COMPOSITION - Ref Wellbore: Rabin Unit 1H AWB Ref Wellpath: Rabin Unit 1H AWP Proj: 24873'					
Start MD [ft]	End MD [ft]	Positional Uncertainty Model	Log Name/Comment	Wellbore	Survey Date
25.50	1035.00	Gyrodata 2015 - GC+WIR+DPIPE	01 Gyrodata MS Gyro <17-1/2"> (100'-1035')	Rabin Unit 1H AWB	8/2/2024
1035.00	3119.00	BH NaviTrak (2019) (Axial Corr+HRGM)	02 APS EM <12-3/8"> (1035')(1070'-3119')	Rabin Unit 1H AWB	8/2/2024
3119.00	6347.00	BH NaviTrak (2019) (Axial Corr+HRGM)	03 APS EM <8-3/4"> (3119')(3235'-6347')	Rabin Unit 1H AWB	9/17/2024
6347.00	24873.00	BH AutoTrak Curve/eXpress (2019) (HRGM, Short spacing)	04 BH Lucida <8-1/2"> (6347')(6399'-24848')	Rabin Unit 1H AWB	9/17/2024

RECEIVED
Office of Oil and Gas

OCT 29 2025

WV Department of
Environmental Protection



Actual Wellpath Report
 Rabin Unit 1H AWP Proj: 24873'
 Page 13 of 13



REFERENCE WELLPATH IDENTIFICATION

Operator	ANTERO RESOURCES CORPORATION	Well	Rabin Unit 1H
Field	Doddridge	API	47-017-06983-0000
Facility	Crimson Pad	Wellbore	Rabin Unit 1H AWB
Slot	Slot C		

COMMENTS

Wellpath general comments

API: 47-017-06983-0000
 BH Job #: 112320228
 Rig: H&P 317
 Duration: 9/21/2024-9/25/2024
 Gyrodata MS Gyro <17-1/2"> (100'-1035')
 APS EM <12-3/8"> (1035')(1070'-3119')
 APS EM <8-3/4"> (3119')(3235'-6347')
 BH Lucida <8-1/2"> (6347')(6399'-24848')
 Sycamore: 6853' MD
 Middlesex: 7021' MD
 Burkett: 7236' MD
 Tully: 7294' MD
 Marcellus POE: 7528' MD
 Projected MD at TD: 24873'

RECEIVED
 Office of Oil and Gas

OCT 29 2025

WV Department of
 Environmental Protection