

State of West Virginia  
Department of Environmental Protection - Office of Oil and Gas  
Well Operator's Report of Well Work

RECEIVED  
Office of Oil and Gas

OCT 29 2025

WV Department of  
Environmental Protection

API 47-017-06986 County Doddridge District McLellan  
Quad Center Point Pad Name Crimson Pad Field/Pool Name ----  
Farm name Shawn A. Glaspell Well Number Fripp Unit 1HA  
Operator (as registered with the OOG) Antero Resources Corporation  
Address 1615 Wynkoop Street City Denver State CO Zip 80202

As Drilled location NAD 83/UTM Attach an as-drilled plat, profile view, and deviation survey  
Top hole Northing 4359504.455m Easting 527061.559m  
Landing Point of Curve Northing 4359393.61m Easting 526476.42m  
Bottom Hole Northing 4364449.635m Easting 524756.847m

Elevation (ft) 1222' GL Type of Well  New  Existing Type of Report  Interim  Final  
Permit Type  Deviated  Horizontal  Horizontal 6A  Vertical Depth Type  Deep  Shallow  
Type of Operation  Convert  Deepen  Drill  Plug Back  Redrilling  Rework  Stimulate  
Well Type  Brine Disposal  CBM  Gas  Oil  Secondary Recovery  Solution Mining  Storage  Other \_\_\_\_\_  
Type of Completion  Single  Multiple Fluids Produced  Brine  Gas  NGL  Oil  Other \_\_\_\_\_  
Drilled with  Cable  Rotary

Drilling Media Surface hole  Air  Mud  Fresh Water Intermediate hole  Air  Mud  Fresh Water  Brine  
Production hole  Air  Mud  Fresh Water  Brine

Mud Type(s) and Additive(s)

Air - Foam & 4% KCL

Mud - Polymer

Date permit issued 6/12/2024 Date drilling commenced 8/13/2024 Date drilling ceased 9/11/2024  
Date completion activities began 3/10/2025 Date completion activities ceased 5/27/2025  
Verbal plugging (Y/N) N/A Date permission granted N/A Granted by N/A

Please note: Operator is required to submit a plugging application within 5 days of verbal permission to plug

Freshwater depth(s) ft 303', 953' Open mine(s) (Y/N) depths No  
Salt water depth(s) ft 2123' Void(s) encountered (Y/N) depths No  
Coal depth(s) ft N/A Cavern(s) encountered (Y/N) depths No  
Is coal being mined in area (Y/N) No

Reviewed by:

APPROVED

11-3-25  
03/13/2026

OCT 29 2025

WR-35  
Rev. 8/23/13

API 47-017 - 06986

Farm name Shawn A. Glaspell

WV Department of  
Environmental Protection  
Well number Fripp Unit 1HA

CASING STRINGS	Hole Size	Casing Size	Depth	New or Used	Grade wt/ft	Basket Depth(s)	Did cement circulate (Y/N) * Provide details below*
Conductor	28"	20"	125.5'	New	91.59#, J-55	N/A	Y
Surface	17-1/2"	13-3/8"	1076'	New	54.5#, J-55	N/A	Y
Coal							
Intermediate 1	12-3/8"	9-5/8"	3229'	New	34.89#, J-55	N/A	Y
Intermediate 2							
Intermediate 3							
Production	8-3/4"/8-1/2"	5-1/2"	25369'	New	23#, P-110-ICY	N/A	Y
Tubing		2-3/8"	7449'		4.7#, P-110		
Packer type and depth set		N/A					

Comment Details \_\_\_\_\_

CEMENT DATA	Class/Type of Cement	Number of Sacks	Slurry wt (ppg)	Yield (ft <sup>3</sup> /sks)	Volume (ft <sup>3</sup> )	Cement Top (MD)	WOC (hrs)
Conductor	Class A	158 sx	15.6	1.18	186	0'	8 Hrs.
Surface	Class A	880 sx	15.6	1.19	1047	0'	8 Hrs.
Coal							
Intermediate 1	Class H	1118 sx	15.6	1.18	1319	0'	8 Hrs.
Intermediate 2							
Intermediate 3							
Production	Class H	5515 sx (Tail)	13.5 (Lead), 15.2(Tail)	1.26 (Tail)	6949	~500' into Intermediate Casing	8 Hrs.
Tubing							

Drillers TD (ft) 25369' MD, 7182' TVD (BHL), 7221' (Deepest Point Drilled)

Loggers TD (ft) 25369' MD

Deepest formation penetrated Marcellus

Plug back to (ft) N/A

Plug back procedure N/A

Kick off depth (ft) 6615'

Check all wireline logs run  
 caliper    density    deviated/directional    induction  
 neutron    resistivity    gamma ray    temperature    sonic

Well cored  Yes  No   Conventional  Sidewall   Were cuttings collected  Yes  No

DESCRIBE THE CENTRALIZER PLACEMENT USED FOR EACH CASING STRING

Conductor - 0

Surface - 1 above guide shoe, 1 above insert float, 1 every 4th joint to surface

Intermediate - 1 above float joint, 1 above float collar, 1 every 4th joint to surface

Production - 1 above float joint, 1 below float collar, 1 every 3rd joint to top of cement

WAS WELL COMPLETED AS SHOT HOLE  Yes  No   DETAILS \_\_\_\_\_

WAS WELL COMPLETED OPEN HOLE?  Yes  No   DETAILS \_\_\_\_\_

WERE TRACERS USED  Yes  No   TYPE OF TRACER(S) USED N/A

**APPROVED** *Shawn A. Glaspell* 03/13/2026 11-3-25



API 47- 017 - 06986 Farm name Shawn A. Glaspell Well number Fripp Unit 1HA

<u>PRODUCING FORMATION(S)</u>	<u>DEPTHS</u>	
<u>Marcellus</u>	<u>7103' (TOP)</u> TVD	<u>7631' (TOP)</u> MD
_____	_____	_____
_____	_____	_____
_____	_____	_____

RECEIVED  
Office of Oil and Gas  
**OCT 29 2025**  
WV Department of  
Environmental Protection

Please insert additional pages as applicable.

GAS TEST  Build up  Drawdown  Open Flow OIL TEST  Flow  Pump

SHUT-IN PRESSURE Surface 2896 psi Bottom Hole --- psi DURATION OF TEST --- hrs

OPEN FLOW Gas 17560 mcfpd Oil 42 bpd NGL --- bpd Water 441 bpd  
 GAS MEASURED BY  Estimated  Orifice  Pilot

LITHOLOGY/ FORMATION	TOP DEPTH IN FT NAME TVD	BOTTOM DEPTH IN FT TVD	TOP DEPTH IN FT MD	BOTTOM DEPTH IN FT MD	DESCRIBE ROCK TYPE AND RECORD QUANTITY AND TYPE OF FLUID (FRESHWATER, BRINE, OIL, GAS, H <sub>2</sub> S, ETC)
-------------------------	--------------------------------	------------------------------	--------------------------	-----------------------------	--

**\*PLEASE SEE ATTACHED EXHIBIT 3**


Please insert additional pages as applicable.

Drilling Contractor H & P Drilling  
Address 912 N Eagle Valley Rd City Howard State PA Zip 16841

Logging Company Nine Energy Services  
Address 6500 West Fwy City Fort Worth State TX Zip 76116

Cementing Company Dowell Schlumberger  
Address 600 Industrial Dr City Beckley State WV Zip 25801

Stimulating Company Halliburton  
Address 3000 W. Sam Houston Pkwy City Houston State TX Zip 76114

Please insert additional pages as applicable.

Completed by Carly Wren Telephone 303-357-7373  
Signature [Signature] Title Permitting Agent Date 10/28/2025

RECEIVED  
Office of Oil and Gas

OCT 29 2025

WV Department of  
Environmental Protection

API 47-017-06286 Farm Name Shawn A. Glaspoell Well Number Fripp Unit 1HA					
Exhibit 1					
Stage No.	Perforation Date	Perforated from MD ft.	Perforated to MD ft.	Number of Perforations	Formations
1	3/10/2025	25284	25240	60	Marcellus
2	3/10/2025	25201.75	25037.48	60	Marcellus
3	3/11/2025	25002.22	24837.95	60	Marcellus
4	3/12/2025	24802.70	24638.43	60	Marcellus
5	3/12/2025	24603.18	24438.91	60	Marcellus
6	3/13/2025	24403.66	24239.39	60	Marcellus
7	3/13/2025	24204.13	24039.86	60	Marcellus
8	3/14/2025	24004.61	23840.34	60	Marcellus
9	3/14/2025	23805.09	23640.82	60	Marcellus
10	3/15/2025	23605.56	23441.30	60	Marcellus
11	3/15/2025	23406.04	23241.77	60	Marcellus
12	3/16/2025	23206.52	23042.25	60	Marcellus
13	3/16/2025	23007.00	22842.73	60	Marcellus
14	3/17/2025	22807.47	22643.20	60	Marcellus
15	3/17/2025	22607.95	22443.68	60	Marcellus
16	3/18/2025	22408.43	22244.16	60	Marcellus
17	3/19/2025	22208.91	22044.64	60	Marcellus
18	3/19/2025	22009.38	21845.11	60	Marcellus
19	3/20/2025	21809.86	21645.59	60	Marcellus
20	3/20/2025	21610.34	21446.07	60	Marcellus
21	3/21/2025	21410.81	21246.55	60	Marcellus
22	3/22/2025	21211.29	21047.02	60	Marcellus
23	3/22/2025	21011.77	20847.50	60	Marcellus
24	3/22/2025	20812.25	20647.98	60	Marcellus
25	3/23/2025	20612.72	20448.45	60	Marcellus
26	3/23/2025	20413.20	20248.93	60	Marcellus
27	3/24/2025	20213.68	20049.41	60	Marcellus
28	3/24/2025	20014.16	19849.89	60	Marcellus
29	3/25/2025	19814.63	19650.36	60	Marcellus
30	3/25/2025	19615.11	19450.84	60	Marcellus
31	3/26/2025	19415.59	19251.32	60	Marcellus
32	3/26/2025	19216.06	19051.80	60	Marcellus
33	3/27/2025	19016.54	18852.27	60	Marcellus
34	3/27/2025	18817.02	18652.75	60	Marcellus
35	3/28/2025	18617.50	18453.23	60	Marcellus
36	3/28/2025	18417.97	18253.70	60	Marcellus
37	3/29/2025	18218.45	18054.18	60	Marcellus
38	3/30/2025	18018.93	17854.66	60	Marcellus
39	3/30/2025	17819.41	17655.14	60	Marcellus
40	3/31/2025	17619.88	17455.61	60	Marcellus
41	3/31/2025	17420.36	17256.09	60	Marcellus
42	4/1/2025	17220.84	17056.57	60	Marcellus
43	4/1/2025	17021.31	16857.05	60	Marcellus
44	4/2/2025	16821.79	16657.52	60	Marcellus
45	4/3/2025	16622.27	16458.00	60	Marcellus
46	4/3/2025	16422.75	16258.48	60	Marcellus
47	4/4/2025	16223.22	16058.95	60	Marcellus
48	4/4/2025	16023.70	15859.43	60	Marcellus
49	4/5/2025	15824.18	15659.91	60	Marcellus
50	4/6/2025	15624.66	15460.39	60	Marcellus
51	4/6/2025	15425.13	15260.86	60	Marcellus
52	4/7/2025	15225.61	15061.34	60	Marcellus
53	4/7/2025	15026.09	14861.82	60	Marcellus
54	4/8/2025	14826.56	14662.30	60	Marcellus
55	4/8/2025	14627.04	14462.77	60	Marcellus
56	4/15/2025	14427.52	14263.25	60	Marcellus
57	4/15/2025	14228.00	14063.73	60	Marcellus
58	4/15/2025	14028.47	13864.20	60	Marcellus
59	4/15/2025	13828.95	13664.68	60	Marcellus
60	4/15/2025	13629.43	13465.16	60	Marcellus
61	4/15/2025	13429.91	13265.64	60	Marcellus
62	4/15/2025	13230.38	13066.11	60	Marcellus
63	4/15/2025	13030.86	12866.59	60	Marcellus
64	4/17/2025	12831.34	12667.07	60	Marcellus
65	4/17/2025	12631.81	12467.55	60	Marcellus
66	4/17/2025	12432.29	12268.02	60	Marcellus
67	4/17/2025	12232.77	12068.50	60	Marcellus
68	4/18/2025	12033.25	11868.98	60	Marcellus
69	4/18/2025	11833.72	11669.45	60	Marcellus
70	4/20/2025	11634.20	11469.93	60	Marcellus
71	4/20/2025	11434.68	11270.41	60	Marcellus
72	4/20/2025	11235.16	11070.89	60	Marcellus
73	4/20/2025	11035.63	10871.36	60	Marcellus
74	4/22/2025	10836.11	10671.84	60	Marcellus
75	4/22/2025	10636.59	10472.32	60	Marcellus
76	4/23/2025	10437.06	10272.80	60	Marcellus
77	4/23/2025	10237.54	10073.27	60	Marcellus
78	4/24/2025	10038.02	9873.75	60	Marcellus
79	4/24/2025	9838.50	9674.23	60	Marcellus
80	4/24/2025	9638.97	9474.70	60	Marcellus
81	4/24/2025	9439.45	9275.18	60	Marcellus
82	4/25/2025	9239.93	9075.66	60	Marcellus
83	4/25/2025	9040.41	8876.14	60	Marcellus
84	4/26/2025	8840.88	8676.61	60	Marcellus
85	4/26/2025	8641.36	8477.09	60	Marcellus
86	4/26/2025	8441.84	8277.57	60	Marcellus
87	4/27/2025	8242.31	8078.05	60	Marcellus
88	4/27/2025	8042.79	7878.52	60	Marcellus
89	4/27/2025	7843.27	7679.00	60	Marcellus

03/13/2026

RECEIVED  
Office of Oil and Gas

OCT 29 2025

WV Department of  
Environmental Protection

API 47-017-06986 Farm Name Shawn A. Glaspell Well Number Frigo Unit 1HA								
EXHIBIT 2								
Stage No.	Stimulations Date	Avg Pump Rate	Avg Treatment Pressure (PSI)	Max Breakdown Pressure (PSI)	ISIP (PSI)	Amount of Proppant (lbs)	Amount of Water (bbls)	Amount of Nitrogen/other (lbs)
1	3/10/2025	63.9	10207.0	8600.2	3830.4	164080	5154.8	N/A
2	3/10/2025	76.2	10376.0	7934.9	4082.4	416420	7362.2	N/A
3	3/11/2025	83.1	10470.1	8178.2	4648.9	414500	7360.6	N/A
4	3/12/2025	97.1	10550.8	7574.8	5141.0	395670	7247.1	N/A
5	3/12/2025	94.6	9970.8	7480.2	4494.5	417900	7314.3	N/A
6	3/13/2025	97.3	10532.8	7489.9	4987.0	396830	6789.9	N/A
7	3/13/2025	87.5	10492.5	7704.9	5375.3	397470	7063.8	N/A
8	3/14/2025	94.2	10752.7	7710.6	4911.0	413880	7182.7	N/A
9	3/14/2025	89.9	10382.9	7733.8	4911.0	396810	8500.9	N/A
10	3/15/2025	82.8	10088.9	6963.4	4887.0	392590	7668.4	N/A
11	3/15/2025	91.5	10788.7	7607.3	5111.0	411820	7259.1	N/A
12	3/16/2025	87.7	10565.8	7504.0	4629.0	410060	7290.3	N/A
13	3/16/2025	86.6	10915.4	7420.7	4481.0	409940	7113.7	N/A
14	3/17/2025	91.5	10622.1	6498.7	4827.6	402660	7146.4	N/A
15	3/17/2025	87.5	10986.5	7015.9	4741.0	398470	7095.7	N/A
16	3/18/2025	58.1	6432.1	6739.6	4609.0	395940	9989.5	N/A
17	3/19/2025	89.2	9864.5	7713.7	5142.0	397000	7819.7	N/A
18	3/19/2025	94.3	10170.4	7553.7	5120.0	396360	7005.4	N/A
19	3/20/2025	95.0	10008.6	7971.5	4439.0	397540	7111.0	N/A
20	3/20/2025	96.7	10169.5	6757.0	4574.0	398020	7040.1	N/A
21	3/21/2025	95.7	9831.8	6871.1	4692.9	396880	7106.9	N/A
22	3/22/2025	92.1	9799.2	6829.5	4315.0	397090	6934.3	N/A
23	3/22/2025	99.1	10155.9	7454.4	4660.0	391520	6866.6	N/A
24	3/22/2025	96.8	9894.7	6899.2	4811.0	397800	6886.0	N/A
25	3/23/2025	98.4	9851.9	6813.8	3926.4	396470	6957.0	N/A
26	3/23/2025	95.7	10178.7	6474.2	4612.0	399410	6834.6	N/A
27	3/24/2025	98.2	10197.0	6624.2	5722.6	414720	7177.0	N/A
28	3/24/2025	99.1	10146.5	7997.3	5000.0	394850	6739.6	N/A
29	3/25/2025	98.7	10351.4	6737.2	5011.0	408280	7058.9	N/A
30	3/25/2025	97.4	10478.6	6888.2	4267.7	396170	6935.0	N/A
31	3/26/2025	96.4	10150.8	6767.9	4411.2	397860	6965.5	N/A
32	3/26/2025	98.4	9980.4	7092.0	5071.0	397650	7043.9	N/A
33	3/27/2025	97.3	9970.2	7020.9	4732.9	394540	6958.5	N/A
34	3/27/2025	98.4	9800.0	6918.2	6840.0	395700	6980.1	N/A
35	3/28/2025	97.2	9792.3	7265.7	3996.8	409800	7178.7	N/A
36	3/28/2025	98.8	9979.7	6472.1	4560.0	400380	6958.5	N/A
37	3/29/2025	99.0	9884.1	6898.1	4892.0	411720	7117.6	N/A
38	3/30/2025	96.7	10000.4	6788.5	4951.0	397310	7010.9	N/A
39	3/30/2025	96.9	9699.0	6180.2	4458.7	395030	6895.9	N/A
40	3/31/2025	97.4	9891.8	7250.3	4707.0	396690	7117.2	N/A
41	3/31/2025	96.3	9892.6	7266.6	4757.0	399010	6812.9	N/A
42	4/1/2025	98.2	9741.4	7160.5	4750.0	414780	7110.8	N/A
43	4/1/2025	98.4	9718.4	7060.3	3968.9	393680	6879.5	N/A
44	4/2/2025	97.3	9799.8	6955.1	4590.0	401580	6832.8	N/A
45	4/3/2025	97.6	9806.1	6791.6	4840.5	396610	6851.1	N/A
46	4/3/2025	97.7	9554.4	5911.3	5089.0	408740	7133.2	N/A
47	4/4/2025	97.9	9707.3	7413.1	4427.0	397120	6954.1	N/A
48	4/4/2025	98.1	9589.8	7777.1	4753.0	420960	7216.4	N/A
49	4/5/2025	97.3	9532.5	6982.1	4616.8	412700	7046.5	N/A
50	4/6/2025	96.8	9786.3	7134.3	5142.0	396210	6854.4	N/A
51	4/6/2025	97.6	9651.1	6804.0	5025.0	410640	6918.6	N/A
52	4/7/2025	28.7	4136.3	6992.6	8499.0	272840	7006.2	N/A
53	4/7/2025	97.5	9440.3	6632.1	5392.0	417340	6995.6	N/A
54	4/8/2025	96.4	8867.8	6559.0	4829.0	388250	6705.3	N/A
55	4/8/2025	100.0	9087.2	5921.5	4084.6	395330	6772.0	N/A
56	4/15/2025	97.4	8811.9	6190.4	5245.4	414360	6976.2	N/A
57	4/15/2025	96.2	8694.4	6335.0	4288.6	408920	6935.0	N/A
58	4/15/2025	97.4	8845.9	6239.9	5227.8	414380	6879.1	N/A
59	4/15/2025	96.9	8785.8	6380.6	4224.7	406160	6946.1	N/A
60	4/15/2025	97.2	8659.0	6227.0	4525.9	413620	6895.4	N/A
61	4/15/2025	98.1	8710.1	6201.6	4978.0	409080	6914.8	N/A
62	4/15/2025	97.9	8662.9	6029.4	5086.2	421420	7019.2	N/A
63	4/15/2025	96.9	8610.5	6692.3	4862.2	421580	7054.0	N/A
64	4/17/2025	96.7	8908.4	6411.0	5800.6	415100	7094.7	N/A
65	4/17/2025	97.5	8856.2	6382.3	3893.6	428200	7188.1	N/A
66	4/17/2025	95.0	9032.6	7022.1	3677.3	389430	6887.3	N/A
67	4/17/2025	96.3	8467.1	6247.0	4227.3	416540	7080.4	N/A
68	4/18/2025	96.6	8673.6	6281.5	4482.7	414240	7028.7	N/A
69	4/18/2025	97.4	8732.1	6208.1	3982.0	420920	7040.5	N/A
70	4/20/2025	98.1	8845.8	6964.7	5160.0	429420	7067.9	N/A
71	4/20/2025	97.1	8772.4	7248.7	5358.3	419340	6949.1	N/A
72	4/20/2025	95.8	8457.0	6588.8	4789.0	429600	7061.0	N/A
73	4/20/2025	95.7	8209.2	6219.2	4323.4	419460	6889.9	N/A
74	4/22/2025	97.0	8629.8	6945.1	5438.8	416360	6909.2	N/A
75	4/22/2025	94.9	8562.2	6983.5	5086.0	418920	7862.0	N/A
76	4/23/2025	97.2	8399.7	7222.6	3982.3	413680	6925.6	N/A
77	4/23/2025	96.7	8390.2	6123.5	4467.0	424900	7001.6	N/A
78	4/24/2025	98.3	8152.6	6310.3	4312.0	416620	6857.7	N/A
79	4/24/2025	98.7	8024.3	5554.0	4518.0	420200	6906.3	N/A
80	4/24/2025	96.0	8309.1	7640.3	4136.0	419820	6962.5	N/A
81	4/24/2025	91.7	7829.7	7413.4	4302.8	418760	6914.5	N/A
82	4/25/2025	97.1	7998.8	7856.3	4186.0	421920	6924.9	N/A
83	4/25/2025	97.2	8034.7	6776.3	4207.0	417880	6907.8	N/A
84	4/26/2025	97.0	8142.4	7578.4	4854.7	413040	6779.3	N/A
85	4/26/2025	97.7	7827.5	5890.3	5285.9	420660	6886.4	N/A
86	4/26/2025	97.3	7718.5	6908.8	5373.9	399280	6656.2	N/A
87	4/27/2025	98.3	7611.5	6235.3	4961.0	426420	6900.1	N/A
88	4/27/2025	98.8	7573.4	5938.6	3914.5	422080	6903.1	N/A
89	4/27/2025	96.9	7710.6	6440.4	3917.2	422940	7140.7	N/A
	AVERAGE	94	9,307	6,915	4,746	35,924,870	627,673	TOTAL

03/13/2026

OCT 29 2025

WV Department of  
Environmental Protection

API 47-017-06986 Farm Name Shawn A. Glaspell Well Number Fripp Unit 1HA

**EXHIBIT 3**

LITHOLOGY/ FORMATION	TOP DEPTH (TVD)	BOTTOM DEPTH (TVD)	TOP DEPTH (MD)	BOTTOM DEPTH (MD)
	From Surface	From Surface	From Surface	From Surface
Silty Sandstone	1,124	1,224	1,124	1,224
Sandstone, Occ Siltstone	1,224	1,274	1,224	1,274
Silty Sandstone, tr coal	1,274	1,424	1,274	1,424
Silty Sandstone	1,374	1,524	1,374	1,524
Sandstone, Siltstone	1,424	1,524	1,424	1,524
Silty Sandstone, tr coal	1,524	1,574	1,524	1,574
Silty Sandstone	1,574	1,624	1,574	1,624
Silty Sandstone, tr coal	1,624	1,674	1,624	1,674
Sandstone, Siltstone	1,674	1,774	1,674	1,774
Sandstone, Siltstone, tr coal	1,774	1,874	1,774	1,874
Silty Sandstone	1,874	1,974	1,874	1,974
Sandy Siltstone	1,974	2,024	1,974	2,024
Sandy Siltstone	2,024	2,074	2,024	2,074
Siltstone, Occ Sandstone	2,074	2,124	2,074	2,124
Sandy Siltstone, Occ Limestone	2,124	2,127	2,124	2,166
Big Lime	2,153	2,804	2,166	2,879
Fifty Foot Sandstone	2,804	2,968	2,853	3,052
Gordon	2,968	3,205	3,026	3,302
Fifth Sandstone	3,205	3,264	3,276	3,364
Bayard	3,264	4,047	3,338	4,197
Speechley	4,047	4,295	4,171	4,460
Balltown	4,295	4,817	4,434	5,010
Bradford	4,817	5,316	4,984	5,536
Benson	5,316	5,587	5,510	5,822
Alexander	5,587	6,883	5,796	7,208
Sycamore	6,712	6,857	7,012	7,182
Middlesex	6,857	6,999	7,182	7,388
Burkett	6,999	7,029	7,388	7,442
Tully	7,029	7,103	7,442	7,631
Marcellus	7,103	NA	7,631	NA

\*Please note Antero determines formation tops based on mud logs that are only run on one well on a multi-well pad. The measured depth (MD) data on subsequent wells may be slightly different due to the well's unique departure.

03/13/2026

# Hydraulic Fracturing Fluid Product Component Information Disclosure

OCT 29 2025

WV Department of  
Environmental Protection



Job Start Date:	03/09/2025
Job End Date:	04/27/2025
State:	West Virginia
County:	Doddridge
API Number:	47-017-06986-00-00
Operator Name:	Antero Resources Corporation
Well Name and Number:	FRIPP UNIT 1HA
Latitude:	39.384607
Longitude:	-80.685777
Datum:	WGS84
Federal Well:	NO
Indian Well:	NO
True Vertical Depth:	7221
Total Base Water Volume (gal)*:	27470726.99
Total Base Non Water Volume:	0

Water Source	Percent
Produced Water	100.00%

## Hydraulic Fracturing Fluid Composition:

Trade Name	Supplier	Purpose	Ingredients	Chemical Abstract Service Number (CAS #)	Maximum Ingredient Concentration in Additive (% by mass)**	Maximum Ingredient Concentration in HF Fluid (% by mass)**	Comments
Excelerate LX-21	Halliburton	Friction Reducer					
FDP-S1470-23	Halliburton	Friction Reducer					
HAI-501	Halliburton	Acid Corrosion Inhibitor					
HYDROCHLORIC ACID, 22 BAUME	Halliburton	Solvent					
LCA-1	Halliburton	Solvent					
MC B-8123	MultiChem	Biocide					
OPTIFLO-II DELAYED RELEASE BREAKER	Halliburton	Breaker					
Produced Water (Density 8.8)	Operator	Base Fluid					
Sand-Common White-100 Mesh, SSA-2	Halliburton	Proppant					

03/13/2026

**Antero Resources**  
**Well No. Fripp 1HA**  
**As-Drilled**  
**Antero Resources Corporation**

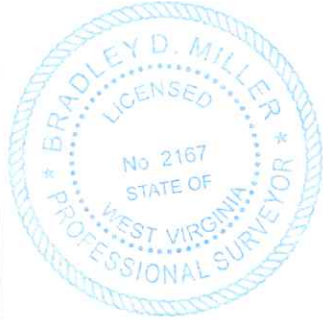


Page  
1 of 2

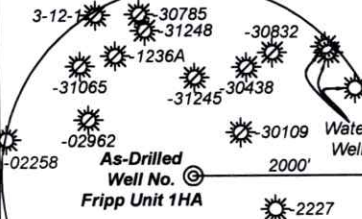
Top Hole Coordinates, As-drilled data, and information was provided by Antero Resources Corporation. Allegheny Surveys Inc. (ASI) is not certifying the data and information provided. ASI is not responsible for any errors or inaccuracies with the data and information that has been provided.

I, the undersigned, hereby certify that this plat is correct to the best of my knowledge and belief and shows all the information required by law and the rules issued and prescribed by the Department of Environmental Protection.

*Bradley D. Miller*  
 Bradley D. Miller, P.S. 2167



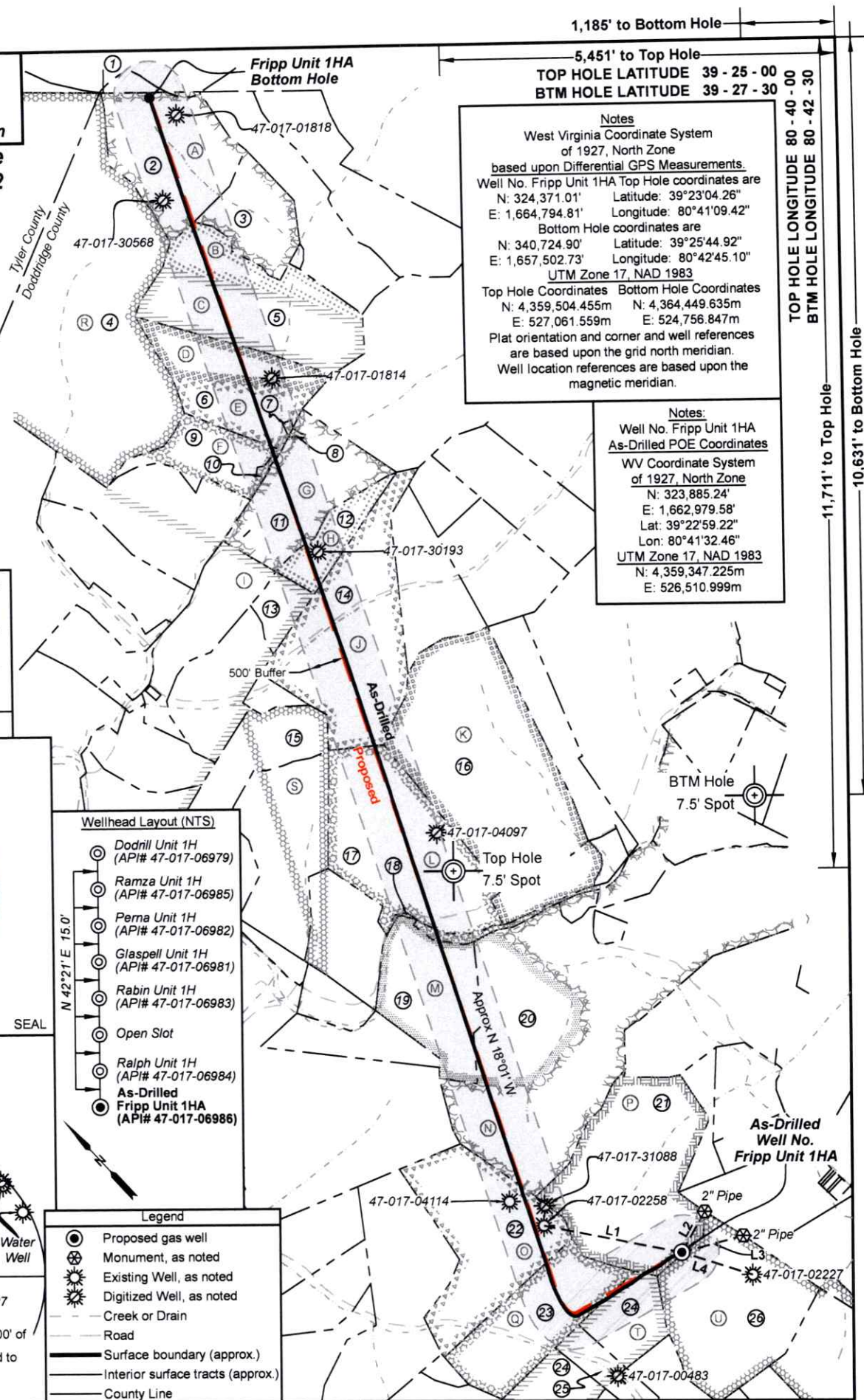
	Bearing	Dist.
L1	S 78°51' E	1,984.7'
L2	S 29°48' W	662.2'
L3	S 75°08' W	902.8'
L4	N 72°23' W	1,052.6'



Note: 3 water wells were found within 2000' of proposed well. No occupied dwellings or buildings 2,500 square feet or larger used to house or shelter dairy cattle or poultry husbandry are located within 625' of the center of the well pad.

- Wellhead Layout (NTS)**
- Dodrill Unit 1H (API# 47-017-06979)
  - Ramza Unit 1H (API# 47-017-06985)
  - Perna Unit 1H (API# 47-017-06982)
  - Glaspell Unit 1H (API# 47-017-06981)
  - Rabin Unit 1H (API# 47-017-06983)
  - Open Slot
  - Ralph Unit 1H (API# 47-017-06984)
  - As-Drilled Fripp Unit 1HA (API# 47-017-06986)

- Legend**
- Proposed gas well
  - ⊗ Monument, as noted
  - ⊙ Existing Well, as noted
  - ⊙ Digitized Well, as noted
  - Creek or Drain
  - Road
  - Surface boundary (approx.)
  - Interior surface tracts (approx.)
  - County Line



**Notes**  
 West Virginia Coordinate System of 1927, North Zone based upon Differential GPS Measurements.  
 Well No. Fripp Unit 1HA Top Hole coordinates are  
 N: 324,371.01' Latitude: 39°23'04.26"  
 E: 1,664,794.81' Longitude: 80°41'09.42"  
 Bottom Hole coordinates are  
 N: 340,724.90' Latitude: 39°25'44.92"  
 E: 1,657,502.73' Longitude: 80°42'45.10"  
 UTM Zone 17, NAD 1983  
 Top Hole Coordinates Bottom Hole Coordinates  
 N: 4,359,504.455m N: 4,364,449.635m  
 E: 527,061.559m E: 524,756.847m  
 Plat orientation and corner and well references are based upon the grid north meridian. Well location references are based upon the magnetic meridian.

**Notes:**  
 Well No. Fripp Unit 1HA As-Drilled POE Coordinates  
 WV Coordinate System of 1927, North Zone  
 N: 323,885.24'  
 E: 1,662,979.58'  
 Lat: 39°22'59.22"  
 Lon: 80°41'32.46"  
 UTM Zone 17, NAD 1983  
 N: 4,359,347.225m  
 E: 526,510.999m

1,185' to Bottom Hole  
 5,451' to Top Hole  
 TOP HOLE LATITUDE 39 - 25 - 00  
 BTM HOLE LATITUDE 39 - 27 - 30  
 TOP HOLE LONGITUDE 80 - 40 - 00  
 BTM HOLE LONGITUDE 80 - 42 - 30  
 11,711' to Top Hole  
 10,631' to Bottom Hole

FILE NO: 267-30-M-22  
 DRAWING NO: Fripp 1HA As-Drilled  
 SCALE: 1" = 2000'  
 MINIMUM DEGREE OF ACCURACY: Submeter  
 PROVEN SOURCE OF ELEVATION: WVDOT, Harrisville, WV

**STATE OF WEST VIRGINIA**  
 DEPARTMENT OF ENVIRONMENTAL PROTECTION  
**OIL AND GAS DIVISION**

DATE: October 17 20 25  
 OPERATOR'S WELL NO. Fripp 1HA  
 API WELL NO  
 47 - 017 - 06986  
 STATE COUNTY PERMIT

WELL TYPE:  OIL  GAS  LIQUID INJECTION  WASTE DISPOSAL  
 (IF GAS) PRODUCTION:  STORAGE  DEEP  SHALLOW

LOCATION: ELEVATION: As-Built: 1,222' WATERSHED: McElroy Creek QUADRANGLE: Center Point  
 DISTRICT: McClellan COUNTY: Doddridge  
 SURFACE OWNER: Shawn A. Glaspell ACREAGE: 100  
 ROYALTY OWNER: Minda Allen LEASE NO: ACREAGE: 100

PROPOSED WORK:  DRILL  CONVERT  DRILL DEEPER  FRACTURE OR STIMULATE  PLUG OFF OLD FORMATION  
 PERFORATE NEW FORMATION  OTHER PHYSICAL CHANGE IN WELL (SPECIFY) As-Drilled 7,182' TVD  
 PLUG AND ABANDON  CLEAN OUT AND REPLUG TARGET FORMATION: Marcellus Shale ESTIMATED DEPTH: 25,369' MD

WELL OPERATOR: Antero Resources Corporation DESIGNATED AGENT: Conrad Baston  
 ADDRESS: 1615 Wynkoop Street ADDRESS: 535 White Oaks Blvd.  
 Denver, CO 80202 Bridgeport, WV 26330



Leases	
A	Robert L. Wolfe
B	Deborah Ann Cox
C	Jefferson Minerals, LLC
D	Ed Broome, Inc.
E	Grace Olive Rudder
F	Mary Ann Swiger
G	N.M. Laughery
H	Jacqueline L. Wichman Trust
I	W.B. Allen, et ux
J	Jay Bee Production Company, et al
K	Antero Minerals, LLC
L	Donald R. Reynolds
M	Donald R. Reynolds
N	Donald R. Reynolds
O	W.S. & Nannie L. Stuart
P	Minda Allen
Q	Thomas H. Downs
R	O.W.O. Hardman, et al
S	Mary F. Mutschelknaus
T	Robert O. Hopkins
U	Morris Mountaineer Oil & Gas, LLC

ID	TM-Par	Owner	Bk/Pg	Acres
1	12-28	Garnett M. Ferrebee	WB24/333	107.00
2	5-1	Robert L. Wolfe	231/560	58.00
3	5-9	Robert L. Wolfe	231/560	32.75
4	17-3	Coastal Forest Resources Co.	199/267	766.00
5	5-10	Kevin E. & Elizabeth A. Denny	287/49	88.89
6	5-11	Edward F. & Grace O. Rudder	244/30	53.76
7	5-11.2	Edward F. Rudder, et ux	172/531	0.37
8	11-35	Edward M. Rudder, et al	WB94/431	0.37
9	11-1	Jonathan G. Edwards	277/108	29.58
10	11-1.1	Bernice A. Swiger	273/502	0.91
11	5-11.1	Grace Olive Rudder	WB42/130	60.63
12	11-5.2	James B. & Hazel I. Lemasters	143/118	21.50
13	11-5.3	James B. & Hazel I. Lemasters	143/118	11.40
14	11-5	James B. & Hazel I. Lemasters	143/118	108.00
15	11-21	Mary K. & Paul Baker	92/51	63.98
16	11-14	Charles W. Yeager III	312/354	150.00
17	11-24	Barbara M. Swiger	WB59/593	90.83
18	11-33.1	Mary L. Glaspell, et al	WB33/513	0.60
19	11-33	Mary Lea Glaspell	WB33/513	50.00
20	11-34	Shawn A. Glaspell	271/230	254.51
21	17-3.3	Shawn A. Glaspell	283/601	100.00
22	17-9	John M. & Connie S. Underwood Irrevocable Trust	294/401	84.00
23	17-13	Shawn A. Glaspell	468/444	65.00
24	17-16	Faith L. Fry	238/167	36.84
25	17-18.1	Faith L. & Michael Fry	342/340	19.50
26	17-3.2	Shawn A. Glaspell	283/601	135.00

FILE NO: 267-30-M-22  
 DRAWING NO: Fripp 1HA As-Drilled  
 SCALE: 1" = 2000'  
 MINIMUM DEGREE OF ACCURACY:  
Submeter  
 PROVEN SOURCE OF ELEVATION:  
WVDOT, Harrisville, WV

**STATE OF WEST VIRGINIA**  
 DEPARTMENT OF ENVIRONMENTAL PROTECTION  
**OIL AND GAS DIVISION**

DATE: October 17 20 25  
 OPERATOR'S WELL NO. Fripp 1HA  
 API WELL NO  
47 - 017 - 06986  
 STATE COUNTY PERMIT

WELL TYPE:  OIL  GAS  LIQUID INJECTION  WASTE DISPOSAL  
 (IF GAS) PRODUCTION:  STORAGE  DEEP  SHALLOW

LOCATION: ELEVATION: As-Built: 1,222' WATERSHED: McElroy Creek QUADRANGLE: Center Point  
 DISTRICT: McClellan COUNTY: Doddridge  
 SURFACE OWNER: Shawn A. Glaspell ACREAGE: 100  
 ROYALTY OWNER: Minda Allen LEASE NO: \_\_\_\_\_ ACREAGE: 100

PROPOSED WORK:  DRILL  CONVERT  DRILL DEEPER  FRACTURE OR STIMULATE  PLUG OFF OLD FORMATION  
 PERFORATE NEW FORMATION  OTHER PHYSICAL CHANGE IN WELL (SPECIFY) As-Drilled 7,182' TVD  
 PLUG AND ABANDON  CLEAN OUT AND REPLUG TARGET FORMATION: Marcellus Shale ESTIMATED DEPTH: 25,369' MD

WELL OPERATOR: Antero Resources Corporation DESIGNATED AGENT: Conrad Baston  
 ADDRESS: 1615 Wynkoop Street ADDRESS: 535 White Oaks Blvd.  
Denver, CO 80202 Bridgeport, WV 26330

Sand-Premium White-40/70	Halliburton	Proppant					
WG-36 GELLING AGENT	Halliburton	Gelling Agent					

Items above are Trade Names. Items below are the individual ingredients.

			Water	7732-18-5	100.00000	86.88913	None
			Crystalline silica, quartz	14808-60-7	100.00000	12.91244	None
			Water	7732-18-5	100.00000	0.16123	None
			Hydrochloric acid	7647-01-0	30.00000	0.03793	None
			Complex amine compound	Proprietary	60.00000	0.02355	None
			Hydrotreated distillate	Proprietary	100.00000	0.01178	None
			Ethanaminium, N,N,N-trimethyl-2-(1-oxo-2-propen-1-yl)oxy-, chloride (1:1), polymer with 2-propenamide	69418-26-4	60.00000	0.01128	None
			Hydrotreated light petroleum distillates	64742-47-8	30.00000	0.00564	None
			Guar gum	9000-30-0	100.00000	0.00557	None
			Ammonium chloride	12125-02-9	5.00000	0.00290	None
			Glutaraldehyde	111-30-8	30.00000	0.00240	None
			Fatty nitrogen derived amides	Proprietary	5.00000	0.00196	None
			Ethoxylated alcohol	Proprietary	5.00000	0.00196	None
			Amides, tall-oil fatty, N,N-bis(hydroxyethyl)	68155-20-4	5.00000	0.00094	None
			Ethoxylated branched C13 alcohol	78330-21-9	5.00000	0.00094	None
			Sorbitan monooleate polyoxyethylene derivative	9005-65-6	1.00000	0.00058	None
			Quaternary ammonium compounds, benzyl-C12-16-alkyldimethyl, chlorides	68424-85-1	5.00000	0.00040	None
			Sorbitan, mono-9-octadecenoate, (Z)	1338-43-8	1.00000	0.00039	None
			Methanol	67-56-1	100.00000	0.00024	None
			Sorbitan, mono-9-octadecenoate, (Z)	1338-43-8	1.00000	0.00019	None
			Ammonium persulfate	7727-54-0	100.00000	0.00015	None
			Citric acid	77-92-9	1.00000	0.00008	None
			Mixture of dimer and trimer fatty acids of	61790-12-3	30.00000	0.00007	None

03/13/2026

			indefinite composition derived from tall oil				
			Modified thiourea polymer	Proprietary	30.00000	0.00007	None
			Oxylated phenolic resin	Proprietary	30.00000	0.00004	None
			Propargyl alcohol	107-19-7	5.00000	0.00001	None
			Hexadecene	629-73-2	5.00000	0.00001	None
			Ethoxylated alcohols	Proprietary	5.00000	0.00001	None
			C.I. pigment Orange 5	3468-63-1	1.00000	0.00000	None

\* Total Water Volume sources may include various types of water including fresh water, produced water, and recycled water

\*\* Information is based on the maximum potential for concentration and thus the total may be over 100%

Note: For Field Development Products (products that begin with FDP), MSDS level only information has been provided.

Ingredient information for chemicals subject to 29 CFR 1910.1200(i) and Appendix D are obtained from suppliers Material Safety Data Sheets (MSDS)

RECEIVED  
Office of Oil and Gas  
OCT 29 2025  
WV Department of  
Environmental Protection

03/13/2026