

BRITTON, F. M., NO. 1.

Dod-49-A.

By Reno Oil Co.

Central Dist.

SEE MICROFILM

CAN NOT  
LOCATE

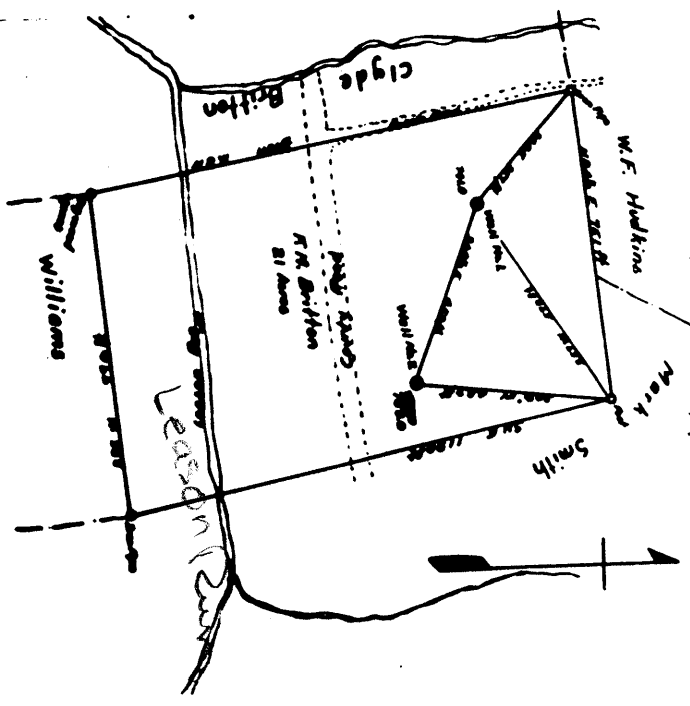
COMPLETION DATA SHEET  
NO. 2  
FORMATION RECORD

Case No. 011 Company (operator)  
Stateville, E. Va. Area  
F. B. Britton Lease #1 - Well #1

Depth	Formation	Sp. Gr.	Permeability	Notes
1190	1190			
1180	1180			
1170	1170			
1160	1160			
1150	1150			
1140	1140			
1130	1130			
1120	1120			
1110	1110			
1100	1100			
1090	1090			
1080	1080			
1070	1070			
1060	1060			
1050	1050			
1040	1040			
1030	1030			
1020	1020			
1010	1010			
1000	1000			
990	990			
980	980			
970	970			
960	960			
950	950			
940	940			
930	930			
920	920			
910	910			
900	900			
890	890			
880	880			
870	870			
860	860			
850	850			
840	840			
830	830			
820	820			
810	810			
800	800			
790	790			
780	780			
770	770			
760	760			
750	750			
740	740			
730	730			
720	720			
710	710			
700	700			
690	690			
680	680			
670	670			
660	660			
650	650			
640	640			
630	630			
620	620			
610	610			
600	600			
590	590			
580	580			
570	570			
560	560			
550	550			
540	540			
530	530			
520	520			
510	510			
500	500			
490	490			
480	480			
470	470			
460	460			
450	450			
440	440			
430	430			
420	420			
410	410			
400	400			
390	390			
380	380			
370	370			
360	360			
350	350			
340	340			
330	330			
320	320			
310	310			
300	300			
290	290			
280	280			
270	270			
260	260			
250	250			
240	240			
230	230			
220	220			
210	210			
200	200			
190	190			
180	180			
170	170			
160	160			
150	150			
140	140			
130	130			
120	120			
110	110			
100	100			
90	90			
80	80			
70	70			
60	60			
50	50			
40	40			
30	30			
20	20			
10	10			
0	0			

Well No. 011  
Company (operator)  
Stateville, E. Va. Area  
F. B. Britton Lease #1 - Well #1

Blue Hill Co. of Alleghenian, Inc. on the  
E. M. Britton farm, consisting of 81 acres  
located in Grant District, Washington County,  
West Virginia.



Approximate contours  
of the geological formation  
are shown by dashed lines  
on the map.

W. F. Hopkins  
R. R. Britton  
Polly Spang  
SI Avenue  
Landon (200)  
Williams

CAN NOT LOCATE

Pullman Quarry  
509400E  
4343320N

