

Latitude 39°17'30"

80° 35' 00"

Longitude

75'  
+

Topo Location

7.5' Loc. 1.66S 15' Loc. 4.54S  
0.28W (calc.) 0.28W

Company \_\_\_\_\_

Farm Ellen Kirk #1

15' Quad Centropnt SC  
(sec.)

7.5' Quad Salem

District GRANT

WELL LOCATION PLAT

County 017 Permit 30050

ELLENKIRK FIELD No. 1 - 2nd DEPT. WELL, 2nd DEPT. WELL

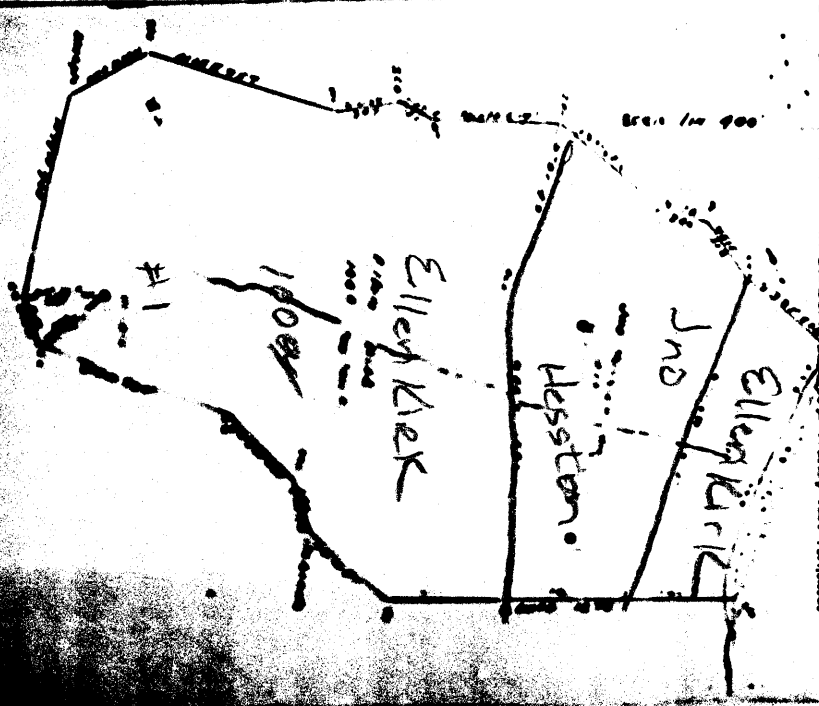
PLUM PIPE OIL REPORT  
 By O. J. Green, Inc.  
 Pittsburgh, Pa.

COMPLETION DATA SHEET  
 NO. 2  
 FORMATION RECORD

| Formation       | Depth (ft) | Thickness (ft) | Permeability | Porosity | Notes |
|-----------------|------------|----------------|--------------|----------|-------|
| Conductor       | 1120       | 1120           |              |          |       |
| Pittsburgh coal | 1420       | 1420           |              |          |       |
| Subsided Sand   | 1620       | 1620           |              |          |       |
| Salt Sand       | 2040       | 2040           |              |          |       |
| Silt Sand       | 2420       | 2420           |              |          |       |
| Silt Shale      | 2470       | 2470           |              |          |       |
| Silt Shale      | 2470       | 2520           |              |          |       |
| Silt Shale      | 2520       | 2570           |              |          |       |
| Silt Shale      | 2570       | 2620           |              |          |       |
| Silt Shale      | 2620       | 2670           |              |          |       |
| Silt Shale      | 2670       | 2720           |              |          |       |
| Silt Shale      | 2720       | 2770           |              |          |       |
| Silt Shale      | 2770       | 2820           |              |          |       |
| Silt Shale      | 2820       | 2870           |              |          |       |
| Silt Shale      | 2870       | 2920           |              |          |       |
| Silt Shale      | 2920       | 2970           |              |          |       |
| Silt Shale      | 2970       | 3020           |              |          |       |
| Silt Shale      | 3020       | 3070           |              |          |       |
| Silt Shale      | 3070       | 3120           |              |          |       |
| Silt Shale      | 3120       | 3170           |              |          |       |
| Silt Shale      | 3170       | 3220           |              |          |       |
| Silt Shale      | 3220       | 3270           |              |          |       |
| Silt Shale      | 3270       | 3320           |              |          |       |
| Silt Shale      | 3320       | 3370           |              |          |       |
| Silt Shale      | 3370       | 3420           |              |          |       |
| Silt Shale      | 3420       | 3470           |              |          |       |
| Silt Shale      | 3470       | 3520           |              |          |       |
| Silt Shale      | 3520       | 3570           |              |          |       |
| Silt Shale      | 3570       | 3620           |              |          |       |
| Silt Shale      | 3620       | 3670           |              |          |       |
| Silt Shale      | 3670       | 3720           |              |          |       |
| Silt Shale      | 3720       | 3770           |              |          |       |
| Silt Shale      | 3770       | 3820           |              |          |       |
| Silt Shale      | 3820       | 3870           |              |          |       |
| Silt Shale      | 3870       | 3920           |              |          |       |
| Silt Shale      | 3920       | 3970           |              |          |       |
| Silt Shale      | 3970       | 4020           |              |          |       |
| Silt Shale      | 4020       | 4070           |              |          |       |
| Silt Shale      | 4070       | 4120           |              |          |       |
| Silt Shale      | 4120       | 4170           |              |          |       |
| Silt Shale      | 4170       | 4220           |              |          |       |
| Silt Shale      | 4220       | 4270           |              |          |       |
| Silt Shale      | 4270       | 4320           |              |          |       |
| Silt Shale      | 4320       | 4370           |              |          |       |
| Silt Shale      | 4370       | 4420           |              |          |       |
| Silt Shale      | 4420       | 4470           |              |          |       |
| Silt Shale      | 4470       | 4520           |              |          |       |
| Silt Shale      | 4520       | 4570           |              |          |       |
| Silt Shale      | 4570       | 4620           |              |          |       |
| Silt Shale      | 4620       | 4670           |              |          |       |
| Silt Shale      | 4670       | 4720           |              |          |       |
| Silt Shale      | 4720       | 4770           |              |          |       |
| Silt Shale      | 4770       | 4820           |              |          |       |
| Silt Shale      | 4820       | 4870           |              |          |       |
| Silt Shale      | 4870       | 4920           |              |          |       |
| Silt Shale      | 4920       | 4970           |              |          |       |
| Silt Shale      | 4970       | 5020           |              |          |       |
| Silt Shale      | 5020       | 5070           |              |          |       |
| Silt Shale      | 5070       | 5120           |              |          |       |
| Silt Shale      | 5120       | 5170           |              |          |       |
| Silt Shale      | 5170       | 5220           |              |          |       |
| Silt Shale      | 5220       | 5270           |              |          |       |
| Silt Shale      | 5270       | 5320           |              |          |       |
| Silt Shale      | 5320       | 5370           |              |          |       |
| Silt Shale      | 5370       | 5420           |              |          |       |
| Silt Shale      | 5420       | 5470           |              |          |       |
| Silt Shale      | 5470       | 5520           |              |          |       |
| Silt Shale      | 5520       | 5570           |              |          |       |
| Silt Shale      | 5570       | 5620           |              |          |       |
| Silt Shale      | 5620       | 5670           |              |          |       |
| Silt Shale      | 5670       | 5720           |              |          |       |
| Silt Shale      | 5720       | 5770           |              |          |       |
| Silt Shale      | 5770       | 5820           |              |          |       |
| Silt Shale      | 5820       | 5870           |              |          |       |
| Silt Shale      | 5870       | 5920           |              |          |       |
| Silt Shale      | 5920       | 5970           |              |          |       |
| Silt Shale      | 5970       | 6020           |              |          |       |
| Silt Shale      | 6020       | 6070           |              |          |       |
| Silt Shale      | 6070       | 6120           |              |          |       |
| Silt Shale      | 6120       | 6170           |              |          |       |
| Silt Shale      | 6170       | 6220           |              |          |       |
| Silt Shale      | 6220       | 6270           |              |          |       |
| Silt Shale      | 6270       | 6320           |              |          |       |
| Silt Shale      | 6320       | 6370           |              |          |       |
| Silt Shale      | 6370       | 6420           |              |          |       |
| Silt Shale      | 6420       | 6470           |              |          |       |
| Silt Shale      | 6470       | 6520           |              |          |       |
| Silt Shale      | 6520       | 6570           |              |          |       |
| Silt Shale      | 6570       | 6620           |              |          |       |
| Silt Shale      | 6620       | 6670           |              |          |       |
| Silt Shale      | 6670       | 6720           |              |          |       |
| Silt Shale      | 6720       | 6770           |              |          |       |
| Silt Shale      | 6770       | 6820           |              |          |       |
| Silt Shale      | 6820       | 6870           |              |          |       |
| Silt Shale      | 6870       | 6920           |              |          |       |
| Silt Shale      | 6920       | 6970           |              |          |       |
| Silt Shale      | 6970       | 7020           |              |          |       |
| Silt Shale      | 7020       | 7070           |              |          |       |
| Silt Shale      | 7070       | 7120           |              |          |       |
| Silt Shale      | 7120       | 7170           |              |          |       |
| Silt Shale      | 7170       | 7220           |              |          |       |
| Silt Shale      | 7220       | 7270           |              |          |       |
| Silt Shale      | 7270       | 7320           |              |          |       |
| Silt Shale      | 7320       | 7370           |              |          |       |
| Silt Shale      | 7370       | 7420           |              |          |       |
| Silt Shale      | 7420       | 7470           |              |          |       |
| Silt Shale      | 7470       | 7520           |              |          |       |
| Silt Shale      | 7520       | 7570           |              |          |       |
| Silt Shale      | 7570       | 7620           |              |          |       |
| Silt Shale      | 7620       | 7670           |              |          |       |
| Silt Shale      | 7670       | 7720           |              |          |       |
| Silt Shale      | 7720       | 7770           |              |          |       |
| Silt Shale      | 7770       | 7820           |              |          |       |
| Silt Shale      | 7820       | 7870           |              |          |       |
| Silt Shale      | 7870       | 7920           |              |          |       |
| Silt Shale      | 7920       | 7970           |              |          |       |
| Silt Shale      | 7970       | 8020           |              |          |       |
| Silt Shale      | 8020       | 8070           |              |          |       |
| Silt Shale      | 8070       | 8120           |              |          |       |
| Silt Shale      | 8120       | 8170           |              |          |       |
| Silt Shale      | 8170       | 8220           |              |          |       |
| Silt Shale      | 8220       | 8270           |              |          |       |
| Silt Shale      | 8270       | 8320           |              |          |       |
| Silt Shale      | 8320       | 8370           |              |          |       |
| Silt Shale      | 8370       | 8420           |              |          |       |
| Silt Shale      | 8420       | 8470           |              |          |       |
| Silt Shale      | 8470       | 8520           |              |          |       |
| Silt Shale      | 8520       | 8570           |              |          |       |
| Silt Shale      | 8570       | 8620           |              |          |       |
| Silt Shale      | 8620       | 8670           |              |          |       |
| Silt Shale      | 8670       | 8720           |              |          |       |
| Silt Shale      | 8720       | 8770           |              |          |       |
| Silt Shale      | 8770       | 8820           |              |          |       |
| Silt Shale      | 8820       | 8870           |              |          |       |
| Silt Shale      | 8870       | 8920           |              |          |       |
| Silt Shale      | 8920       | 8970           |              |          |       |
| Silt Shale      | 8970       | 9020           |              |          |       |
| Silt Shale      | 9020       | 9070           |              |          |       |
| Silt Shale      | 9070       | 9120           |              |          |       |
| Silt Shale      | 9120       | 9170           |              |          |       |
| Silt Shale      | 9170       | 9220           |              |          |       |
| Silt Shale      | 9220       | 9270           |              |          |       |
| Silt Shale      | 9270       | 9320           |              |          |       |
| Silt Shale      | 9320       | 9370           |              |          |       |
| Silt Shale      | 9370       | 9420           |              |          |       |
| Silt Shale      | 9420       | 9470           |              |          |       |
| Silt Shale      | 9470       | 9520           |              |          |       |
| Silt Shale      | 9520       | 9570           |              |          |       |
| Silt Shale      | 9570       | 9620           |              |          |       |
| Silt Shale      | 9620       | 9670           |              |          |       |
| Silt Shale      | 9670       | 9720           |              |          |       |
| Silt Shale      | 9720       | 9770           |              |          |       |
| Silt Shale      | 9770       | 9820           |              |          |       |
| Silt Shale      | 9820       | 9870           |              |          |       |
| Silt Shale      | 9870       | 9920           |              |          |       |
| Silt Shale      | 9920       | 9970           |              |          |       |
| Silt Shale      | 9970       | 10020          |              |          |       |

Well No. \_\_\_\_\_  
 Date \_\_\_\_\_  
 By \_\_\_\_\_  
 Title \_\_\_\_\_

Grant Dist



Scale 1" = 1000 feet  
 North is up

APPARENTLY IN TRIPLICATES TO THE AND MESSAGES OF  
PLANNED AND PLANNED WITH  
WEST VIRGINIA DEPARTMENT OF MINES  
ON THE 15th INSTANT

In V. Van...  
of John...  
Chillicothe, W. Va.

DEPT. MIN. 91...  
Folsom, Va., 10/15/40, 10/15/40, W. Va.

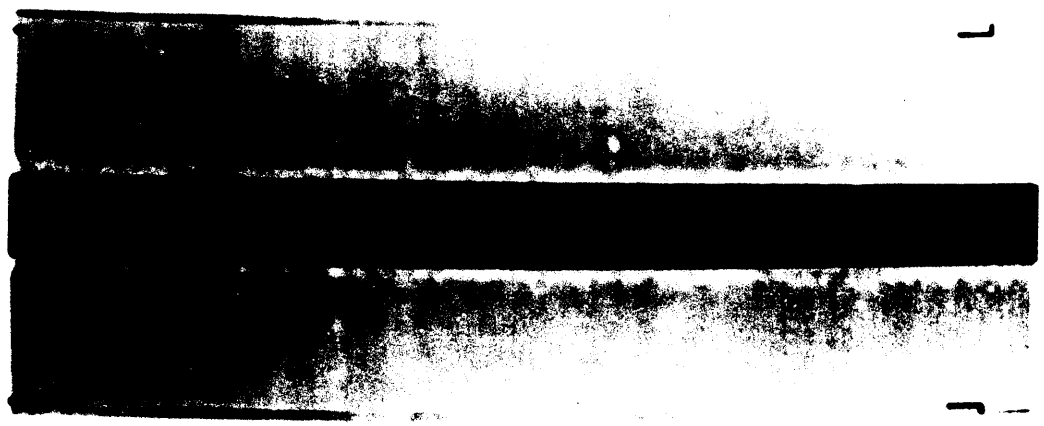
DEPT. MIN. 91...  
Folsom, Va., 10/15/40, 10/15/40, W. Va.

DEPT. MIN. 91...  
Folsom, Va., 10/15/40, 10/15/40, W. Va.

DEPT. MIN. 91...  
Folsom, Va., 10/15/40, 10/15/40, W. Va.

DEPT. MIN. 91...  
Folsom, Va., 10/15/40, 10/15/40, W. Va.

*8/1/40*



WEST VIRGINIA DEPARTMENT OF MINES  
ON THE 15th INSTANT

REGISTRATION DATA SHEET NO. 1

DEPT. MIN. 91...  
Folsom, Va., 10/15/40, 10/15/40, W. Va.

DEPT. MIN. 91...  
Folsom, Va., 10/15/40, 10/15/40, W. Va.

DEPT. MIN. 91...  
Folsom, Va., 10/15/40, 10/15/40, W. Va.

DEPT. MIN. 91...  
Folsom, Va., 10/15/40, 10/15/40, W. Va.

*Amey's*

#134-DH C Red

ELLEN KIRK NO. 1 WELL.

No. 43 O.F.-2-Doddridge.

Did - 50-A

Grant District, Doddridge County, W. Va.  
By South Penn Oil Co., P. O. Drawer 1255, Pittsburgh, Pa.  
On 100 acres (2 tracts), surface owned by F. M. Williams,  
Industrial, W. Va., and mineral rights by Ellen Hanafell,  
1409 E. Oak St., New Albany, Ind.  
Elevation, 1371' L.  
14' conductor; 10" casing, 545'; 8 $\frac{1}{4}$ " 1630'; 6-5/8" 2562'.  
Coal was encountered at 1120-1128'.  
Liner: 5 x 5 $\frac{1}{2}$ " F. J. liner, 3203-2982'.  
Abandonment reported to Dept. of Mines July 10, 1931.  
Well was shot twice.....?  
Producing hole.

|                                      | Top. | Bottom. |
|--------------------------------------|------|---------|
| Conductor                            | 0    | 14      |
| Pittsburgh Coal                      | 1120 | 1128    |
| Dunkard Sand                         | 1635 | 1695    |
| Salt Sand                            | 2040 | 2080    |
| Big Lime                             | 2405 | 2475    |
| Big Injun Sand                       | 2475 | 2555    |
| 50-Ft. Sand                          | 3060 | 3075    |
| Stray Sand                           | 3165 | 3170    |
| Gordon Sand (gas, 3166'; oil, 3203') | 3200 | 3213    |
| Total depth                          |      | 3228    |