

Latitude 39° 20' 60"

Longitude 80° 35' 00"

25'
+

Topo Location

7.5' Loc. $\frac{1.415}{0.87W}$ 15' Loc. $\frac{1.415}{0.87W}$
(calc.)

Company _____ # 2114

Farm John Davisson

15' Quad Centropnt 90
(sec.)

7.5' Quad Salem

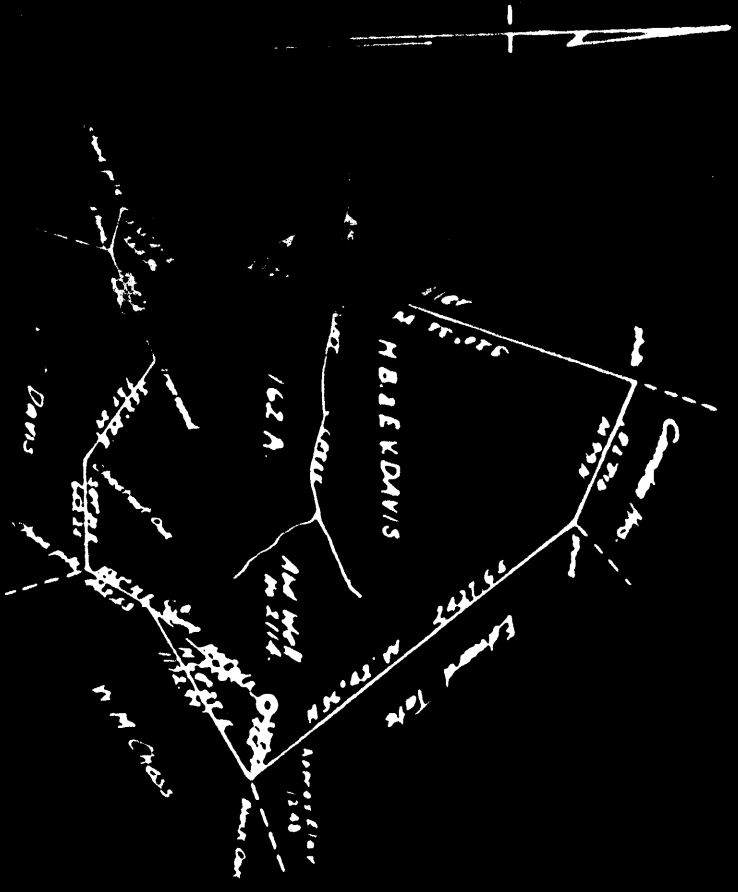
District Grant

WELL LOCATION PLAT

County 017 Permit 30052

PLANT OF THE MOUNTAIN LUMBER CO. OF PITTSBURGH, PA.
 THE MANUFACTURING PLANT & MILL CO. OF PITTSBURGH, PA.
 ON THE M. B. & E. K. DAVIS FARM OF 161 ACRES
 IN GRANT DISTRICT, DOODRIDGE COUNTY, N. Y.A.

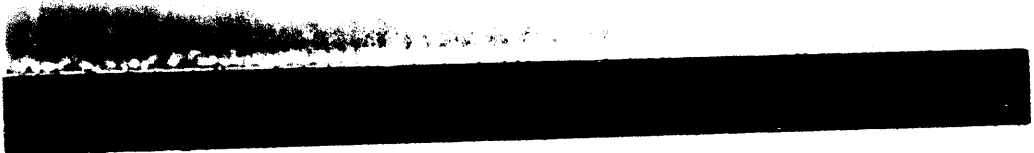
Q08-52-A



ENGINEERS CERTIFICATE

I, THE UNDERSIGNED, HEREBY CERTIFY THAT THIS MAP IS CORRECT AND SHOWS ALL THE INFORMATION TO THE BEST OF MY KNOWLEDGE AND BELIEF, REQUIRED BY THE OIL AND GAS SECTION OF THE MINING LAWS OF WEST VIRGINIA

David H. ...
 ENGINEER



PLAN OF THE ABANDONED LOCATION OF WELL NO. 2114 OF
THE HARRISBURG LIGHT & HEAT CO. OF PITTSBURGH, PA.
ON THE 1/2 ACRES OF J. F. DAVIS FARM OF 162 ACRES
DISTRICT 00001048 COUNTY WYVA

1106-52-A

HARRISBURG LIGHT & HEAT CO.
J. F. DAVIS

Dodd. 52A

Grant District, Doddridge County, W. Va.

By The Manufacturers Light & Heat Co., 800 Union Trust Bldg.,
Pittsburgh, Pa.On 162 acres, surface owned by H. B. Davis, Salem, W. Va., and
mineral rights by The ML&H Co., Pgh., Pa.

Drilled prior to June 1, 1929.

Elevation, 1248' L.

16' conductor; 10" casing, 203'; 8 $\frac{1}{4}$ " , 1494'; 6-5/8" , 2343';
2" tubing, 3181'.

Packer, 6-5/8 x 4, set at 2338'.

Coal was encountered at 1018-1024'.

Abandonment reported to Dept. of Mines Jan. 25, 1932.

	Top.	Bottom.	Thickness.
Pittsburgh Coal	1018	1024	6
Little Dunkard Sand	1440	1500	60
Big Dunkard Sand	1525	1570	45
Gas Sand	1662	1732	70
1st Salt Sand (water at 1890')	1860	1913	53
2nd Salt Sand	1915	1967	52
Maxton Sand	2082	2177	95
Little Lime	2256	2273	17
Pencil Cave	2273	2291	18
Big Lime (6-5/8" casing at 2325'?)	2291	2342	51
Big Injun Sand (gas at 2350')	2342	2455	113
Squaw Sand	2560	2642	82
50-Ft. Sand (gas at 2925')	2920	2927	7
30-Ft. Sand	3006	3032	26
Gordon Stray Sand (hole reduced at 3091'; gas at 3096')	3087	3108	21
Gordon Sand (cage set at 3138')	3127	3145	18
Total depth		3160	