

Latitude

39022' 30"

15'
+

80° 32' 30"

Longitude

Topo Location

7.5' Loc. 0.705 15' Loc. 3.585
1.83W (calc.) 4.06W

Company _____

Farm C. Flanagan

15' Quad Antwerp EC
(sec.)

7.5' Quad Salem

District McClellan

WELL LOCATION PLAT

County 017 Permit 30063

McClellan District, Doddridge County, W. Va.

By The Manufacturers Light & Heat Co., 800 Union Trust Bldg.,
Pittsburgh, Pa.

Dodd. 63

On 30 acres, surface owned by C. & L. Flanigan, R. D. 1, Wallace,
W. Va., and mineral rights by ML&HC., Pgh., Pa.

Drilled prior to June 1, 1929.

Elevation, 896' L.

8 1/4" casing, 1075'; 6-5/8", 1578'; 5-3/16", 1894'.

Coal was encountered at 598'.

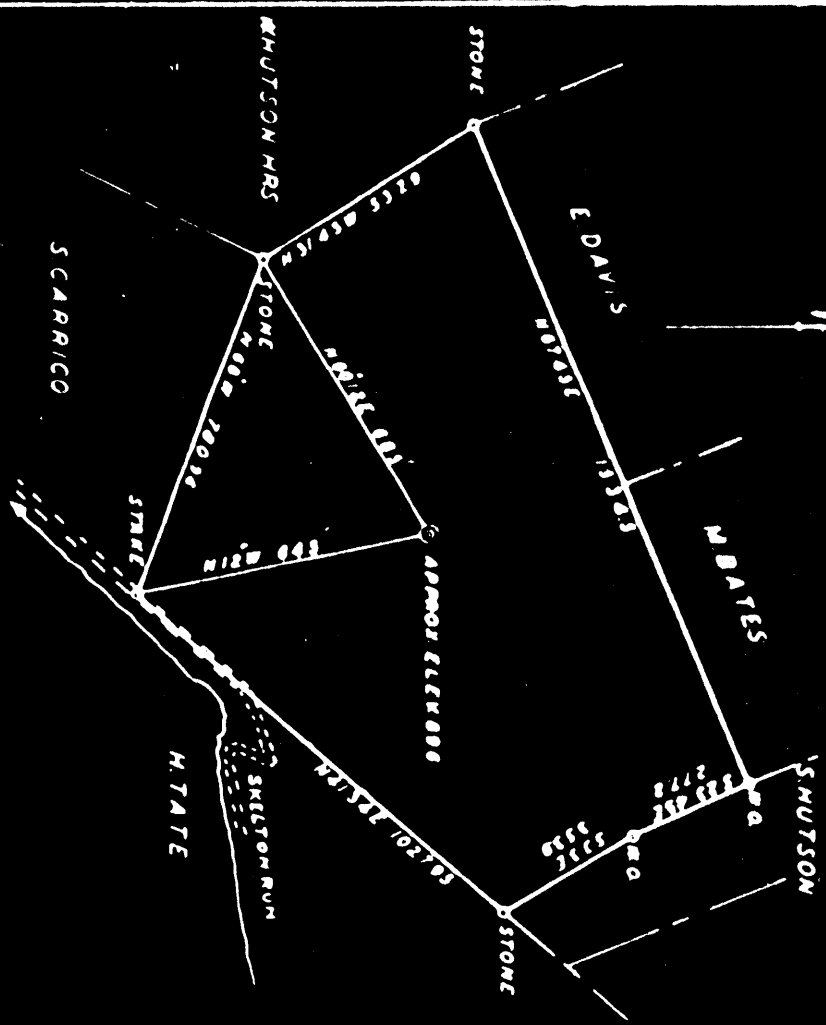
Abandonment reported to Dept. of Mines Oct. 17, 1932.

	Top.	Bottom.
Pittsburgh Coal		598
Big Injun Sand		1904
Gordon Stray Sand (pay at top, 2654, and 2677')		2622
Total depth		2721

PLAT OF THE PROPERTY AND INTERESTS OF WELLS (NO. 108)
 THE ANNECTED TOWNSHIP OF WEST CAPE OF PITTSBURGH, PA.
 BY THE SURVEYOR GENERAL PAUL G. W. WELLS
 IN WASHINGTON DISTRICT OF COLUMBIA COUNTY, W.VA.
 COAL COMPANY OF WASHINGTON DISTRICT

1888 2700

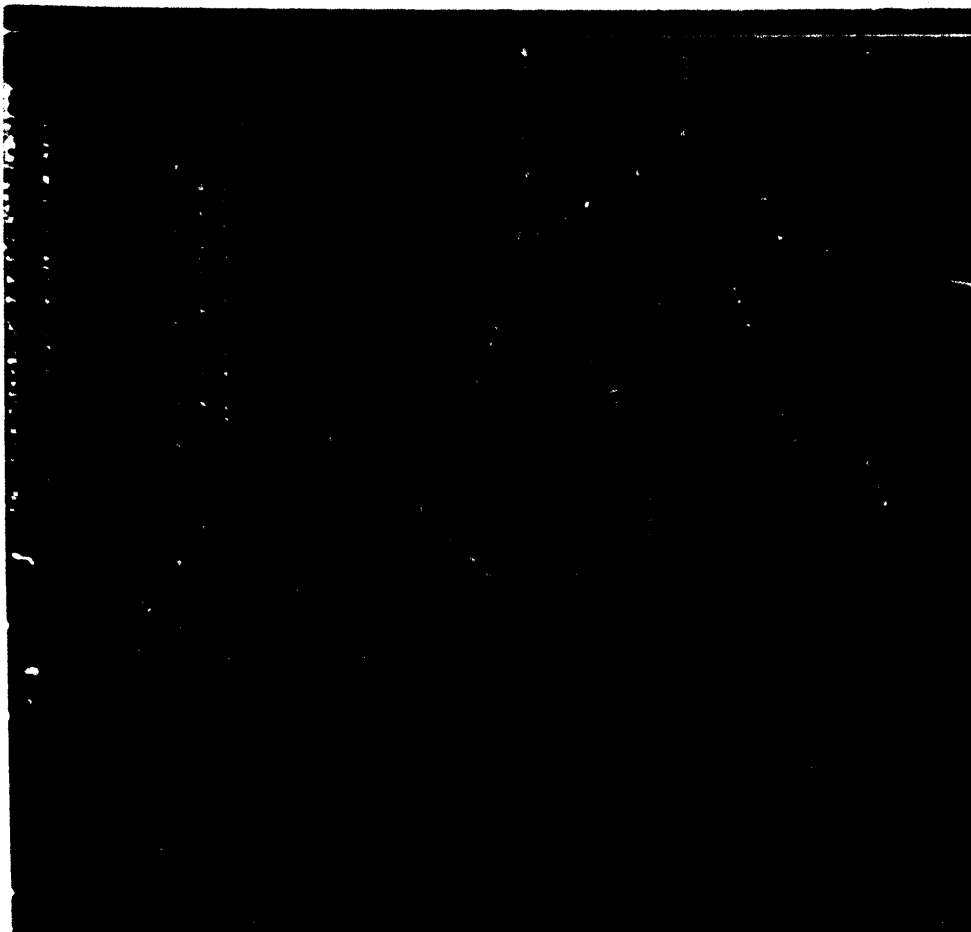
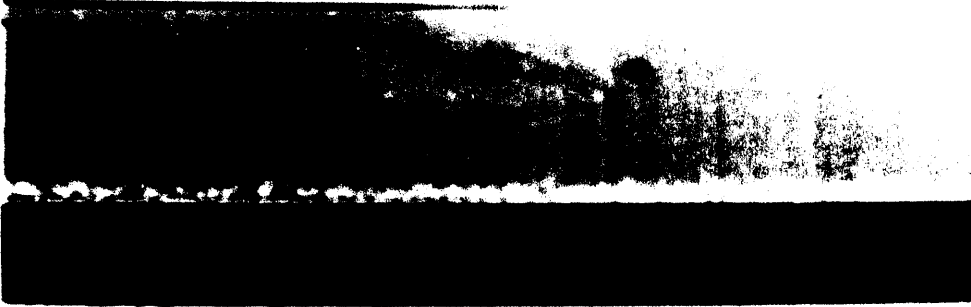
Handwritten: 63-A



ENGINEERS CERTIFICATE

I, THE UNDERSIGNED, HEREBY CERTIFY THAT THIS MAP IS CORRECT AND SHOWS ALL THE INFORMATION TO THE BEST OF MY KNOWLEDGE AND BELIEF, ACQUIRED BY THE OIL AND GAS SURVEY OF THE ABOVE LANDS OF WEST VIRGINIA.

THE UNIVERSITY OF CHICAGO
LIBRARY
540 EAST 57TH STREET
CHICAGO, ILL. 60637
October 17, 1999
Henry A. Jones
[Illegible text]



AFFIDAVIT IN TRIPLICATE TO TIME AND MANNER OF
PLUGGING AND FILLING WELL
WEST VIRGINIA DEPARTMENT OF MINES
OIL AND GAS SECTION

William Magee, Mayor
Dillon Trust Block, Pittsburgh, Pa.
WELL NO. 1337
COUNTY
DATE
WELL AND LOCATION

AFFIDAVIT

STATE OF WEST VIRGINIA

County of Boone
I, JAMES A. CANTON, Sheriff of the County of Boone, West Virginia, do hereby certify that the following is a true and correct copy of the original as the same appears in the records of said County.

Wells A, B, C, D, E, F, G, H, I, J, K, L, M, N, O, P, Q, R, S, T, U, V, W, X, Y, Z.
FILLED WITH AND CLEAR FROM 1904 TO 1904. 100' to 110'.
FILLED WITH AND CLEAR FROM 1905 TO 1905. 100' to 110'.
FILLED WITH AND CLEAR FROM 1906 TO 1906. 100' to 110'.
FILLED WITH AND CLEAR FROM 1907 TO 1907. 100' to 110'.
FILLED WITH AND CLEAR FROM 1908 TO 1908. 100' to 110'.
FILLED WITH AND CLEAR FROM 1909 TO 1909. 100' to 110'.
FILLED WITH AND CLEAR FROM 1910 TO 1910. 100' to 110'.
FILLED WITH AND CLEAR FROM 1911 TO 1911. 100' to 110'.
FILLED WITH AND CLEAR FROM 1912 TO 1912. 100' to 110'.
FILLED WITH AND CLEAR FROM 1913 TO 1913. 100' to 110'.
FILLED WITH AND CLEAR FROM 1914 TO 1914. 100' to 110'.
FILLED WITH AND CLEAR FROM 1915 TO 1915. 100' to 110'.
FILLED WITH AND CLEAR FROM 1916 TO 1916. 100' to 110'.
FILLED WITH AND CLEAR FROM 1917 TO 1917. 100' to 110'.
FILLED WITH AND CLEAR FROM 1918 TO 1918. 100' to 110'.
FILLED WITH AND CLEAR FROM 1919 TO 1919. 100' to 110'.
FILLED WITH AND CLEAR FROM 1920 TO 1920. 100' to 110'.

County of Boone
I, JAMES A. CANTON, Sheriff of the County of Boone, West Virginia, do hereby certify that the following is a true and correct copy of the original as the same appears in the records of said County.

Wells A, B, C, D, E, F, G, H, I, J, K, L, M, N, O, P, Q, R, S, T, U, V, W, X, Y, Z.
FILLED WITH AND CLEAR FROM 1904 TO 1904. 100' to 110'.
FILLED WITH AND CLEAR FROM 1905 TO 1905. 100' to 110'.
FILLED WITH AND CLEAR FROM 1906 TO 1906. 100' to 110'.
FILLED WITH AND CLEAR FROM 1907 TO 1907. 100' to 110'.
FILLED WITH AND CLEAR FROM 1908 TO 1908. 100' to 110'.
FILLED WITH AND CLEAR FROM 1909 TO 1909. 100' to 110'.
FILLED WITH AND CLEAR FROM 1910 TO 1910. 100' to 110'.
FILLED WITH AND CLEAR FROM 1911 TO 1911. 100' to 110'.
FILLED WITH AND CLEAR FROM 1912 TO 1912. 100' to 110'.
FILLED WITH AND CLEAR FROM 1913 TO 1913. 100' to 110'.
FILLED WITH AND CLEAR FROM 1914 TO 1914. 100' to 110'.
FILLED WITH AND CLEAR FROM 1915 TO 1915. 100' to 110'.
FILLED WITH AND CLEAR FROM 1916 TO 1916. 100' to 110'.
FILLED WITH AND CLEAR FROM 1917 TO 1917. 100' to 110'.
FILLED WITH AND CLEAR FROM 1918 TO 1918. 100' to 110'.
FILLED WITH AND CLEAR FROM 1919 TO 1919. 100' to 110'.
FILLED WITH AND CLEAR FROM 1920 TO 1920. 100' to 110'.

WEST VIRGINIA DEPARTMENT OF MINES
OIL AND GAS SECTION

PRELIMINARY DATA SHEET NO. 1

DATE 1927

The undersigned Licent & Agent of the County of Boone, West Virginia, do hereby certify that the following is a true and correct copy of the original as the same appears in the records of said County.
Wells A, B, C, D, E, F, G, H, I, J, K, L, M, N, O, P, Q, R, S, T, U, V, W, X, Y, Z.
FILLED WITH AND CLEAR FROM 1904 TO 1904. 100' to 110'.
FILLED WITH AND CLEAR FROM 1905 TO 1905. 100' to 110'.
FILLED WITH AND CLEAR FROM 1906 TO 1906. 100' to 110'.
FILLED WITH AND CLEAR FROM 1907 TO 1907. 100' to 110'.
FILLED WITH AND CLEAR FROM 1908 TO 1908. 100' to 110'.
FILLED WITH AND CLEAR FROM 1909 TO 1909. 100' to 110'.
FILLED WITH AND CLEAR FROM 1910 TO 1910. 100' to 110'.
FILLED WITH AND CLEAR FROM 1911 TO 1911. 100' to 110'.
FILLED WITH AND CLEAR FROM 1912 TO 1912. 100' to 110'.
FILLED WITH AND CLEAR FROM 1913 TO 1913. 100' to 110'.
FILLED WITH AND CLEAR FROM 1914 TO 1914. 100' to 110'.
FILLED WITH AND CLEAR FROM 1915 TO 1915. 100' to 110'.
FILLED WITH AND CLEAR FROM 1916 TO 1916. 100' to 110'.
FILLED WITH AND CLEAR FROM 1917 TO 1917. 100' to 110'.
FILLED WITH AND CLEAR FROM 1918 TO 1918. 100' to 110'.
FILLED WITH AND CLEAR FROM 1919 TO 1919. 100' to 110'.
FILLED WITH AND CLEAR FROM 1920 TO 1920. 100' to 110'.

The undersigned Licent & Agent of the County of Boone, West Virginia, do hereby certify that the following is a true and correct copy of the original as the same appears in the records of said County.
Wells A, B, C, D, E, F, G, H, I, J, K, L, M, N, O, P, Q, R, S, T, U, V, W, X, Y, Z.
FILLED WITH AND CLEAR FROM 1904 TO 1904. 100' to 110'.
FILLED WITH AND CLEAR FROM 1905 TO 1905. 100' to 110'.
FILLED WITH AND CLEAR FROM 1906 TO 1906. 100' to 110'.
FILLED WITH AND CLEAR FROM 1907 TO 1907. 100' to 110'.
FILLED WITH AND CLEAR FROM 1908 TO 1908. 100' to 110'.
FILLED WITH AND CLEAR FROM 1909 TO 1909. 100' to 110'.
FILLED WITH AND CLEAR FROM 1910 TO 1910. 100' to 110'.
FILLED WITH AND CLEAR FROM 1911 TO 1911. 100' to 110'.
FILLED WITH AND CLEAR FROM 1912 TO 1912. 100' to 110'.
FILLED WITH AND CLEAR FROM 1913 TO 1913. 100' to 110'.
FILLED WITH AND CLEAR FROM 1914 TO 1914. 100' to 110'.
FILLED WITH AND CLEAR FROM 1915 TO 1915. 100' to 110'.
FILLED WITH AND CLEAR FROM 1916 TO 1916. 100' to 110'.
FILLED WITH AND CLEAR FROM 1917 TO 1917. 100' to 110'.
FILLED WITH AND CLEAR FROM 1918 TO 1918. 100' to 110'.
FILLED WITH AND CLEAR FROM 1919 TO 1919. 100' to 110'.
FILLED WITH AND CLEAR FROM 1920 TO 1920. 100' to 110'.