

Latitude 39°15'00"

75'
+

80°32'30"

Longitude

Topo Location

7.5' Loc. 0.30S 15' Loc. 0.30S
1.83W (calc.) 4.06W

Company _____

Farm P. Bailey # 1

15' Quad Vadis NE
(sec.)

7.5' Quad Big ISSAC

District Greenbrier

WELL LOCATION PLAT

County 017 Permit 30135

PROPOSED MANNER OF PLUGGING AND FILLING WELL

(REGULATED BY RULES AND REGULATIONS)

WEST VIRGINIA DEPARTMENT OF MINES
OIL AND GAS DIVISION

WORK ORDER

Well to be plugged and filled as follows:

Well records drilled in 1928. Total depth 2877'. 6 5/8" casing at 2124'.
Pittsburg Coal 739'
Garden Sand 2877' - 2895'

Note: The thickness of the coal was not recorded; it is probably about 4 or 5 feet thick. No formations except as outlined above were recorded by the driller.

.....

To propose to plug and cement as follows:-

Fill with impervious earth material from bottom to 2800'

Use solid plug at 2800'

Fill with impervious earth material to 2600'

Use solid plug at 2600'

Place cement plug on top of wooden plug at 2600' (cement plug
at least 12" long)

Fill with impervious earth material to 2450'

Use a 5' pipe expansion plug 2450' - 2445'

Place cement plug on top of wooden plug at 2445' (cement plug
at least 12" long)

Fill with impervious earth material to 2200'

Sheet off 6-5/8" casing at 1400' and pull case above 1400'

Fill with impervious earth material from 2200' to 739'

Place cement plug from 739' to 729'

Fill with impervious earth material from 729' to surface
Sheet around at surface location

Note: Since there are no coal seams within a radius of approximately 30 miles and the coal is at a depth of 739' at this location, we would like to plug with cement through the coal seam as a vent pipe would probably be corroded off long before any mining is started.

Handwritten signature/initials

To the Department of Mines,
Coal Owner or Operator,
Lessee or Property Owner.

Questions:

This "work order" is submitted for your approval and concurrence and unless notified of your disapproval or non-concurrence, the undersigned will proceed with the plugging and filling of said well in the above described manner on the date stated in the notice of intention to plug and abandon the said well on opposite side of this sheet.

Very truly yours, PITTSBURG OIL & GAS COMPANY

Handwritten signature: J. M. H. Kelly
General Superintendent, Well Operator.

No objections have been filed by the coal owner or coal operator, or any available adjacent lease or property owners or interested by the Department of Mines to the manner herein described for the plugging and filling of the well above mentioned. Therefore, the same is hereby approved this _____ day of _____ 19____.

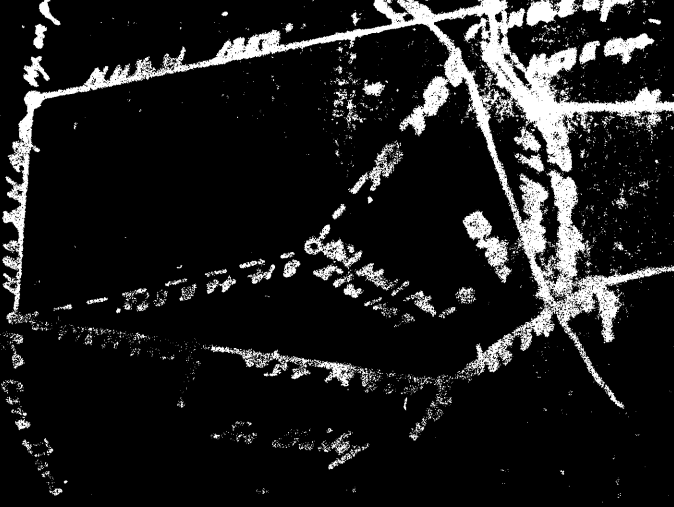
4700-25

I, the undersigned, hereby certify that this map is correct and shows all of the information in my possession and belief, regarding the oil and gas sections of the mining lease of West Virginia.

Engineer's Certificate

Printed on the back of this map

L.B. Strother



08-1357

Handwritten notes or signatures at the bottom right of the page.

WEST VIRGINIA DEPARTMENT OF MINES
OIL AND GAS DIVISION

C.S. Price acquired coal rights in 1923
 Address unknown
 District
 County
 Well No.
 C.P. Struthers
 Name of well operator
 1005 Farmers Bank Bldg., Pittsburgh, Pa.
 December 30th, 1925
 WELL AND LOCATION

AFFIDAVIT

STATE OF WEST VIRGINIA,
 County of Doddridge }
 Geo. L. Greer and Paul Greer
 being first duly sworn according to law depose and say that they are experienced in the work of plugging and filling oil and gas wells and were employed by Pittsburgh Oil & Gas Co., well operator, and participated in the work of plugging and filling the above well, that said work was commenced on the 15 day of Oct., 1925, and that the well was plugged and filled in the following manner:

Manner in which said well was plugged: Filled with impervious earth material from bottom to 2600 ft. Placed cement plug at 2600 ft. Filled with impervious earth material to 2600 ft. Placed cement plug on top of wooden plug 2600 ft (cement plug 10 ft. long). Filled with impervious earth material to 2650 ft. Used 5 ft. plus expansion 2650 ft - 2645 ft. Placed cement plug on top of wood plug at 2645 ft (cement plug 10 ft. long). Filled with impervious earth material to 2800 ft. Shut off 6 5/8 casing at 900 ft. and pulled same above 900 ft. Filled with impervious earth material from 2800 ft. to 790 ft. Placed cement plug from 790 ft. to 785 ft. Filled with impervious earth material from 785 ft. to surface. Great cement 3 ft. square by 3 ft. high with number of well on it.

No coal mines within a radius of approximately 10 miles. The coal is at a depth of 755 ft. at this location. Placed cement plug from 790 ft. to 725 ft.

Description of monument:

One foot of rock four feet square under ground. Monument 3 ft. square at base running to 1 ft. square at top made with sand and cement with number of well on it.

and that the work of plugging and filling said well was completed on the 13 day of NOV, 1925

And further deponents with set.

Geo. L. Greer
 Paul Greer

NOTICE OF INTENTION TO PLUG AND ABANDON WELL
 WEST VIRGINIA DEPARTMENT OF MINES
 OIL AND GAS DIVISION

To the Department of Mines,
 Charleston, W. Va.
 C.S. Price-acquired coal rights in 1923
 Address unknown
 District
 County
 Well No. 1927
 C.P. Struthers
 Name of well operator
 1005 Farmers Bank Building
 Pittsburgh, Pennsylvania
 September 27th, 1927
 WELL TO BE ABANDONED

The undersigned well operator is about to abandon the above described well and will commence the work of plugging and abandoning said well on the 7th day of October, 1927, (which date shall not be less than five days after the day on which this notice is mailed or received, or in due course should be received by the Department of Mines).

This notice is given you in order that your respective representatives may be present at the plugging and filling of said well. You are further notified that whether you are represented or not represented the undersigned will proceed on that date, or shortly thereafter, to plug and fill said well in the manner required by Section 10, Article 4, Chapter 22 of the Code and given in detail on the reverse side of this notice, in "Work Order."

This notice is being mailed by registered mail to each of you at the above addresses on the above date.

Very truly yours,
 PITTSBURGH OIL & GAS COMPANY
 A. W. Haley
 General Superintendent, Well Operator.

NOTE: Upon the abandonment of all wells drilled prior to June 1, 1920, a plat prepared by a competent engineer showing the district and county in which the tract of land is located, the name and acreage of same, the names of the owners of adjacent tracts, and the location of the monument to be placed on the well, prepared by survey, and the distance and direction of such well from two permanent points or landmarks on said tract, shall be established.