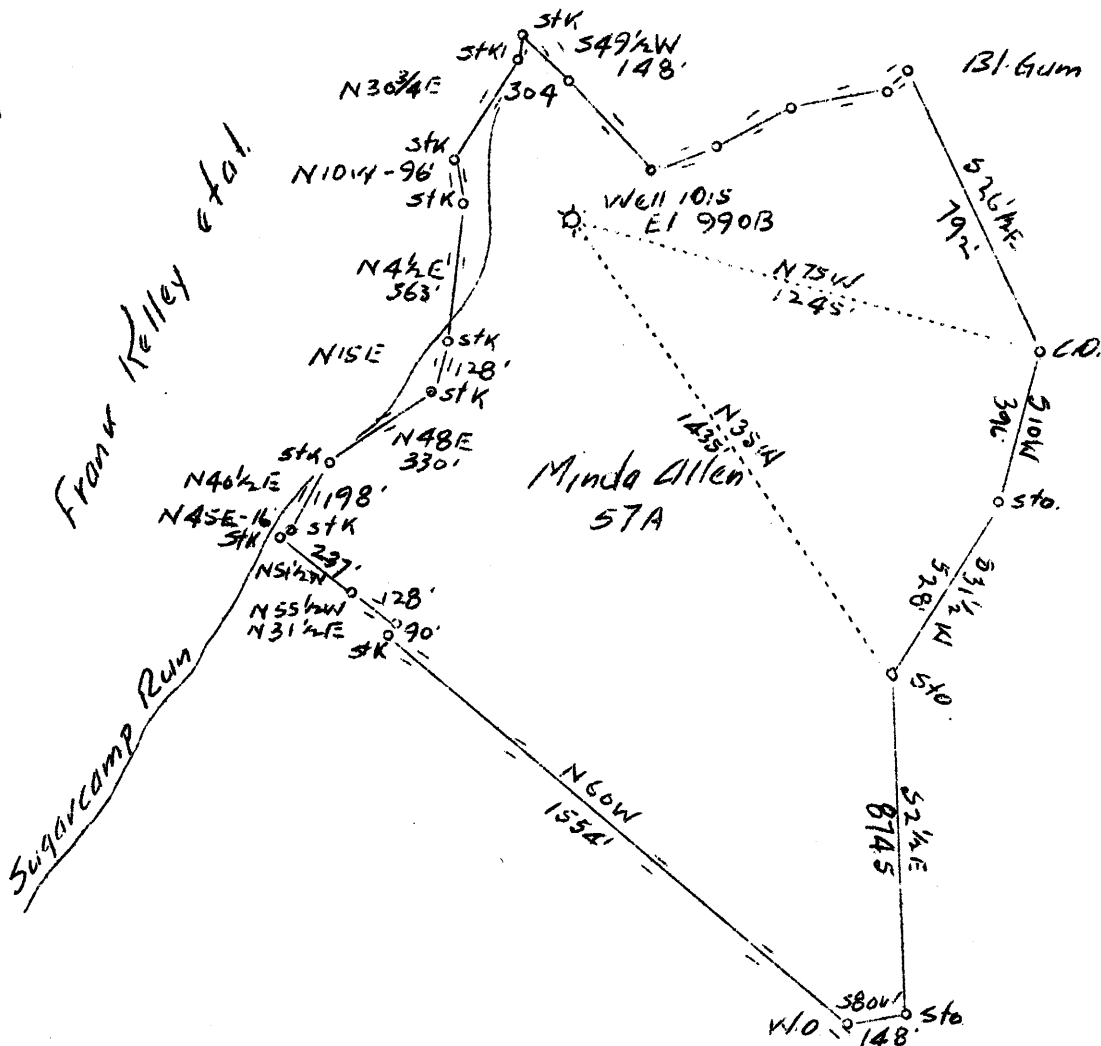


James Kelley et al



James Kelley et al.

J. A. Ford

7.5' loc

243539130
0,34W8090

Abandonment

calc 15' loc

5.315

0,34W

coal not operated.

0.4W

5.442

Company Northeastern Oil & Gas Co.
 Address Charleston, W. Va.
 Farm Minda Allen
 Tract Acres 57 Lease No. 1015
 Well(Farm) No. 1 Serial No. 1015
 Elevation(Spirit Level) 990-B
 Quadrangle Centerpoint SW
 County Doddridge District New Milton
 Engineer B. B. Couk
 Engineer's Registration No. 4274- Pa
 File No. _____ Drawing No. _____
 Date 4-7-37 Scale 1" = 30 Poles

STATE OF WEST VIRGINIA
 Department of Mines
 OIL AND GAS DIVISION
 Charleston

WELL LOCATION MAP

File No. DOD-169A

was 017 72449

+ Denotes location of well on U.S. Topographic Maps, scale 1 to 62,500 latitude and longitude lines being represented by border lines as shown

- Denotes one inch spaces on border line of original tracing.