

39° 22' 30"

LATITUDE

80° 45'

LONGITUDE

2.455

30174 • ←

1.888 W

7'5 OGIS topo location

7.5' loc 2.455 15' loc _____
1.888 W (calc.) _____

Company _____

Farm T D Smith 1

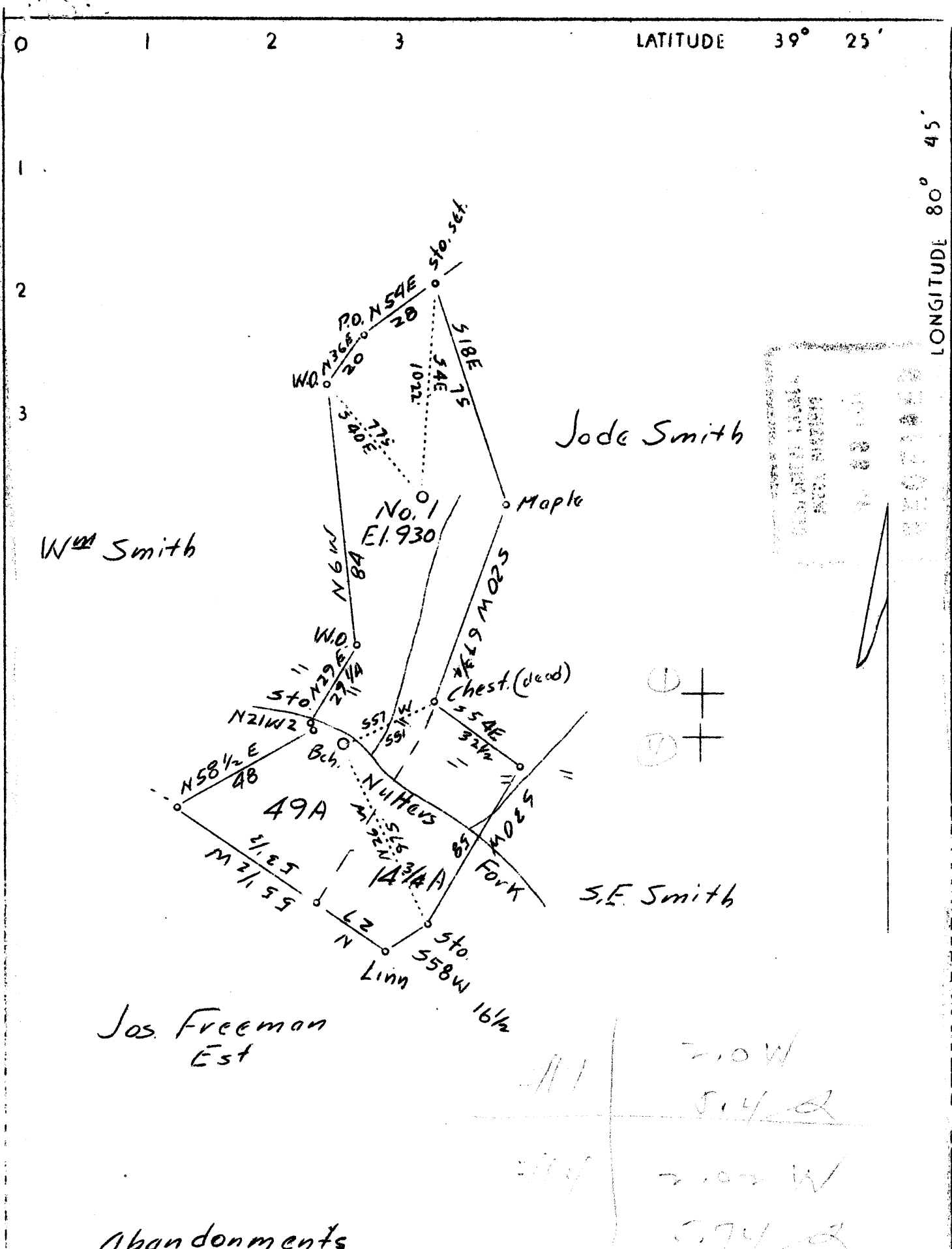
Quad West Union

County Doddridge

District _____

WELL LOCATION MAP

File No. Dodd 30174



Company	Clifton Oil & Gas Co.
Address	Parkersburg, W.Va.
Farm	T.J.Smith, Est.
Tract	2 Acres ⁴⁹³ / ₁₄₄ Lease No.
Well (Farm) No.	1 & 4 Serial No.
Elevation (Spirit Level)	
Quadrangle	West Union 20
County	Doddridge District West Union
Engineer	J.M.Martin
Engineer's Registration No.	84
File No.	Drawing No.
Date	June 14, 1937 Scale 1"=40 P. or 660'

STATE OF WEST VIRGINIA
 Department of Mines
 OIL AND GAS DIVISION
 CHARLESTON

WELL LOCATION MAP
 File No. DOD-174A-175A

⊕ Denotes location of well on United States Topographic Maps, scale 1 to 62,500, latitude and longitude lines being represented by border lines as shown.

--- Denotes one inch spaces on border line of original tracing.

West Union District, Doddridge County, W. Va.
 By Clifton Oil & Gas Co., Parkersburg, W. Va. (R.A. Startzman, Gen. Mgr.)
 On 78 acres, surface and minerals owned by T.J. Smith, R. F. D. No. 2,
 West Union, W. Va.

Elevation.....
 10" casing, 226'; 3 1/4", 1095'; 6 3/8", 1855'.
 Coal was encountered at 305-310 and 572-577'.
 Abandonment reported to Dept. of Mines June 11, 1937.
 No record of shot. No record of water.
 Gas well.
 Record to RCF from Mrs. Griffith 7-24-37.

	Top.	Bottom.	Thickness.
Native coal	305	- 310	5
Pittsburgh Coal	572	- 577	5
Little Dunkard Sand	926	- 976	50
Big Dunkard Sand	1004	- 1060	56
Gas Sand	1130	- 1170	40
First Salt Sand	1300	- 1335	35
Second Salt Sand	1370	- 1480	110
Third Salt Sand	1490	- 1660	170
Little Lime	1792	- 1800	8
Pencil Gave	1800	- 1810	10
Big Lime	1824	- 1915	91
Big Injun Sand (gas, 1987-1998')	1915	- 2022	107
Total depth			2022

T. J. SMITH NO. 1 (Hope No. A-195) WELL.

70241

West Union District, Doddridge County, W. Va.

By.....

Drilling completed Sept. 6, 1911.

Conductor, 14"; 10" casing, 226'; 8", 1095'; 6", 1855'; all left in.

This is a purchased well.

No 2" tubing listed.

Elevation.....

Record in Eastern Petroleum Co. Well Record book of Clifton Oil & Gas Co.

	Top.	Bottom.
Native coal	305	- 310
Pittsburgh Coal	572	- 577
Little Lunkard Sand	926	- 976
Big Lunkard Sand	1004	- 1060
Gas Sand	1130	- 1170
First Salt Sand	1300	- 1335
Second Salt Sand	1370	- 1430
3rd Salt Sand	1490	- 1660
Little Lime	1792	- 1800
Pencil Cave	1800	- 1810
Big Lime	1824	- 1915
Big Injun Sand (gas, 1987-1998')	1915	- 2022
Berea Sand	2170	- 2272
Total depth		2700

The last two items had been scratched out in record.

Memorandum attached to record, dated November 1927:

Tools left in hole at T. A. (J) Smith No. 1:

1 - 5 1/2" 3 3/4' drill stem

1 - 10" bit

1 set 5 1/2" jars

1 - 5 1/2" new long rope socket.

(Signed) John Adams, Foreman.

Now 174-A