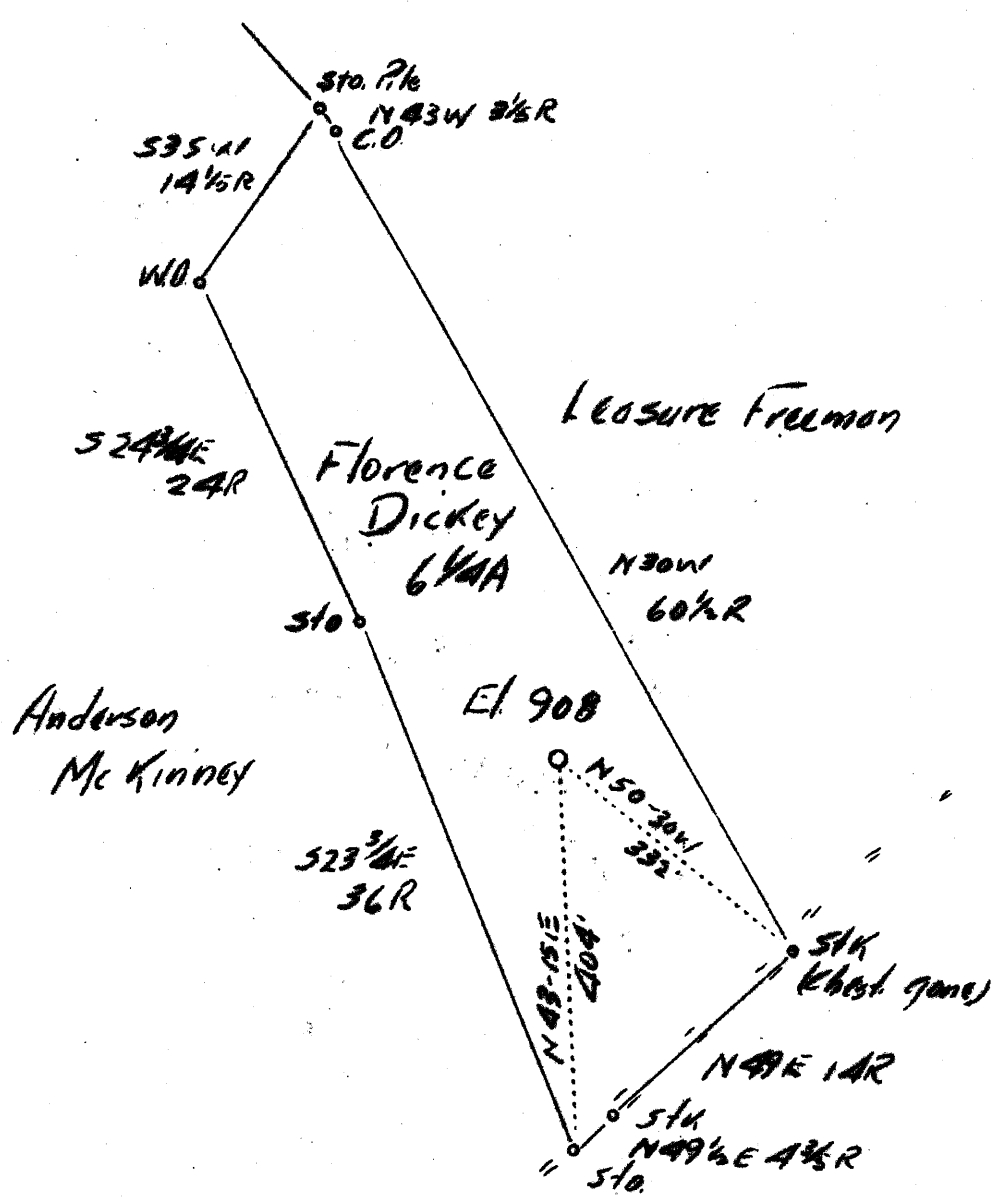


LATITUDE 39° 20'

LONGITUDE 80° 45'



Leasure Freeman
 7.5' loc 1.43 W
 0.075 3920 Calc 15' loc
 1.25W 8045 0.075 0.07 Q
 1/2 9/298

Abandonment

Company	W.D. Gribble
Address	West Union, W. Va.
Farm	Florence Dickey
Tract	Acres $6\frac{1}{2}$ Lease No.
Well (Farm) No.	1 Serial No.
Elevation (Spirit Level)	908'
Quadrangle	West Union
County	Doddridge District West Union
Engineer	H.B. Lowther
Engineer's Registration No.	820
File No.	Drawing No.
Date	7-14-37 Scale 1"=200'

STATE OF WEST VIRGINIA
 Department of Mines
 OIL AND GAS DIVISION
 CHARLESTON

WELL LOCATION MAP
 File No. DOD-179A

+ Denotes location of well on United States Topographic Maps, scale 1 to 62,500, latitude and longitude lines being represented by border lines as shown.

— Denotes one inch spaces on border line of original tracing.