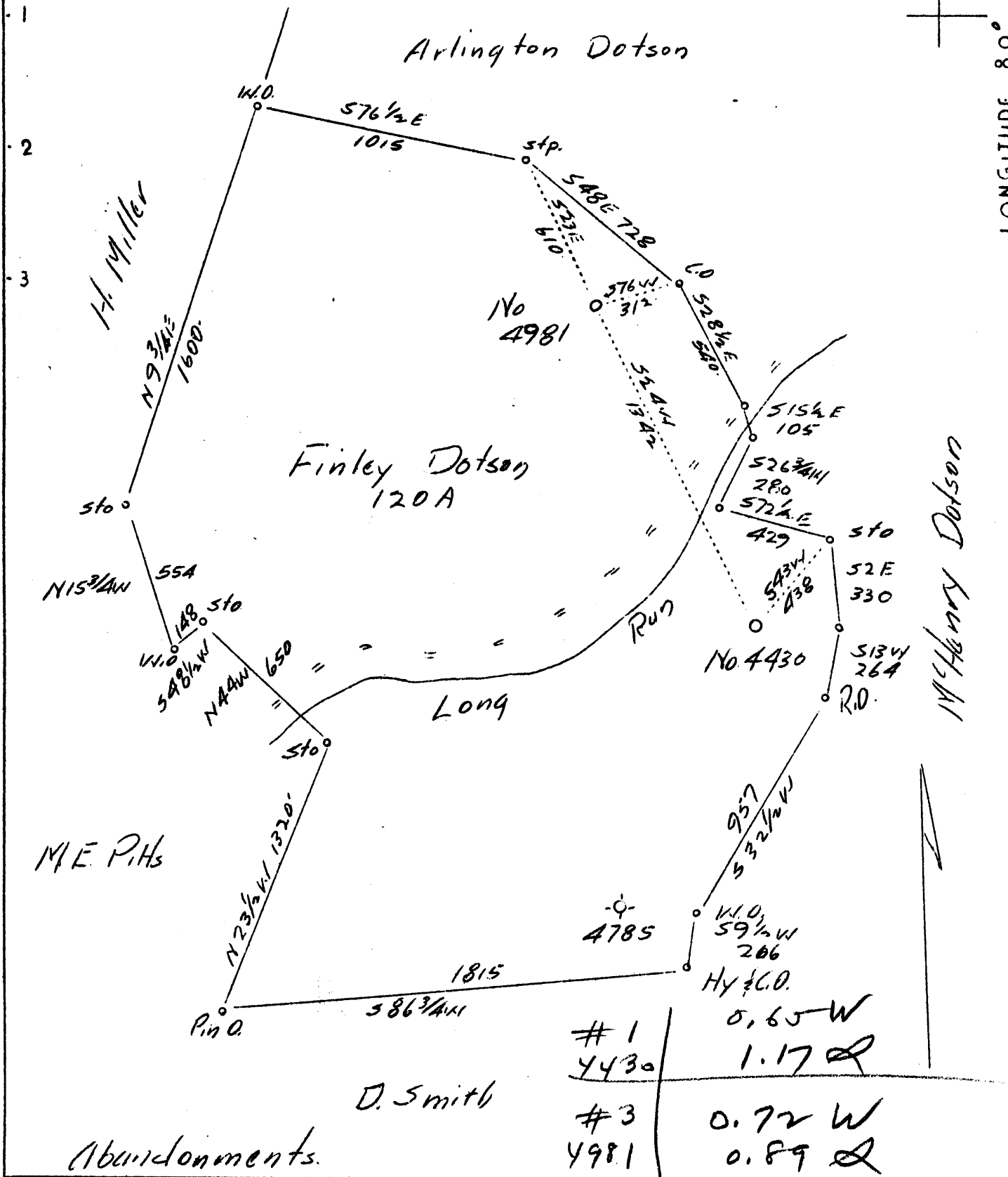


LATITUDE 39° 20'

LONGITUDE 80° 50'



**Abandonments.**

Company	Philadelphia Oil Co.
Address	608 Union Bank, Clarksburg, W.Va.
Farm	Finley Dotson
Tract	Acres 120 Lease No. 7610
Well (Farm) No.	1 & 3 Serial No. 4430, 4981
Elevation (Spirit Level)	860 & 1022
Quadrangle	West Union <b>(50)</b>
County	Doddridge District Central
Engineer	James D. Jeffries
Engineer's Registration No.	
File No.	Drawing No.
Date 7-6-37	Scale 1"-500'

STATE OF WEST VIRGINIA  
 Department of Mines  
 OIL AND GAS DIVISION  
 CHARLESTON

182A WELL LOCATION MAP  
~~182A~~ + 184A  
 File No. ~~DOD-182A~~ 182A

+ Denotes location of well on United States Topographic Maps, scale 1 to 62,500, latitude and longitude lines being represented by border lines as shown.

— Denotes one inch spaces on border line of original tracing.

WEST VIRGINIA DEPARTMENT OF MINES  
OIL AND GAS DIVISION

WELL RECORD

149

Permit No. 000-184-A

Oil or Gas Well Oil  
(Kind)

Company Philadelphia Oil Company.  
Address Clarksburg, West Va.  
Farm Finley Dotson  
Location (waters) West Union - S.E. 1-3/4 Acres  
Well No. 4891 (4991) Eley 1022  
District Central County Doddridge  
The surface of tract is owned in fee by Mrs. Tula Andrews  
Guyon Road. Address Parkersburg, W. Va.  
Mineral rights are owned by Finley & Marg. Dotson  
Central Station, Address West Va.  
Drilling commenced April 15th, 1930  
Drilling completed June 2nd, 1930  
Date shot June 7th, 1930 Depth of shot 2050  
Open Flow /10ths Water in \_\_\_\_\_ Inch  
/10ths Merc. in \_\_\_\_\_ Inch  
Volume \_\_\_\_\_ Cu. Ft.  
Rock Pressure \_\_\_\_\_ lbs. \_\_\_\_\_ hrs.  
Oil \_\_\_\_\_ bbls., 1st 24 hrs.  
Fresh water \_\_\_\_\_ feet \_\_\_\_\_ feet  
Salt water \_\_\_\_\_ feet \_\_\_\_\_ feet

Casing and Tubing	Used in Drilling	Left in Well	Packers
Size			
16 Wood	14'	14'	Kind of Packer
13	563	563	Size of
10	1175	1175	Depth set
8 1/4	1901	1901	Perf. top
6 5/8			Perf. bottom
5 3/16			Perf. top
3			Perf. bottom
2			
Liners Used			

CASING CEMENTED \_\_\_\_\_ SIZE \_\_\_\_\_ No. FT. \_\_\_\_\_ Date \_\_\_\_\_  
COAL WAS ENCOUNTERED AT 160 FEET 12 INCHES  
648 FEET 12 INCHES FEET \_\_\_\_\_ INCHES  
\_\_\_\_\_ FEET \_\_\_\_\_ INCHES FEET \_\_\_\_\_ INCHES

Formation	Color	Hard or Soft	Top	Bottom	Oil Gas or Water	Depth Found	Remarks
Shale	Brown		0	16			
Stone			16	55			
Shale	Red		55	150			
Shale	Gray		150	160			
Coal			160	161			
Shale	Gray		161	165			
Sand			165	175			
Shale	Gray		175	188			
Red Rock	Red		188	210			
Shale	Gray		210	325			
Sand			325	351			
Red Rock	Red		351	387			
Line			387	424			
Shale	Red		424	440			
Line			440	469			
Shale	Red		469	488			
Hurry-Up-Sand			488	563			
Slate	White		563	565			
Sand			565	588			
Line			588	648			
Pgh. Coal			648	649			
Line			649	667			
Shale	White		667	730			
Sand			730	754			
Line			754	775			
Red Rock			775	782			
Line			782	810			
Red Rock			810	840			
Line			840	850			
Red Rock			850	870			
Shale	White		870	900			
Slate	Black		900	910			
Shale	White		910	941			
Slate	Black		941	978			
Shale	White		978	1020			
Sand			1020	1030			
Red Rock			1030	1042			
Sand			1042	1054			
Shale	White		1054	1090			
Sand			1090	1129			
Shale	Black		1129	1149			
Big Dunkard			1149	1185			

Formation	Color	Hard or Soft	Top	Bottom	Oil, Gas or Water	Depth Found	Remarks
Slate	White		1185	1250			
Gas Sand			1250	1300			
Shale	White		1300	1382			
1st. Salt Sand			1382	1417			
Shale	White		1417	1439			
2nd. Salt Sand			1439	1530			
Slate			1530	1604			
3rd. Salt Sand			1604	1708	Sh. Oil	1632'	
Slate	White		1708	1733			
Sand			1733	1753			
Slate	Black		1753	1795			
Lime			1795	1812			
Shale	Pink		1812	1832			
Slate	White		1832	1843			
L. Lime			1843	1870			
P. Cave			1870	1887			
Blue Monday			1887	1893			
Slate			1893	1895			
Big Lime			1895	1954			
Big Injun			1954	2073	Sh. Gas	1976'	
Slate	White		2073	2083	Sh. O. & G.	2051-62'	Hole filled to 2065 feet present depth
Lime			2083	2097			
Slate			2097	2106			
Squar Sand			2106	2116			
Slate			2116	2130			
Lime			2130	2142			
Slate			2142	2154			
Lime			2154	2160			
Slate			2160	2190			
Gantz Sand			2190	2330			
Slate			2330	2353			
Lime			2353	2373			
Slate			2373	2395			
Lime			2395	2408			
Slate			2408	2430			
Lime			2430	2443			
Slate			2443	2464			
Fifty Foot Sand			2464	2477			
Slate			2477	2493			
Lime			2493	2500			
Slate			2500	2515			
Lime			2515	2523			
Slate			2523	2540			
Lime			2540	2555			
Slate			2555	2595			
Lime			2595	2604			
Slate			2604	2619			
Gordon Stray			2619	2625			
Slate			2625	2629			
Gordon Sand			2629	2635			
Slate			2635	2658			
Lime			2658	2660			
Slate			2660	2682			
Total Depth				2682			

Date **June 16th, 1937.** 19.....

APPROVED **Philadelphia Oil Company.** Owner

By *[Signature]* (Title)