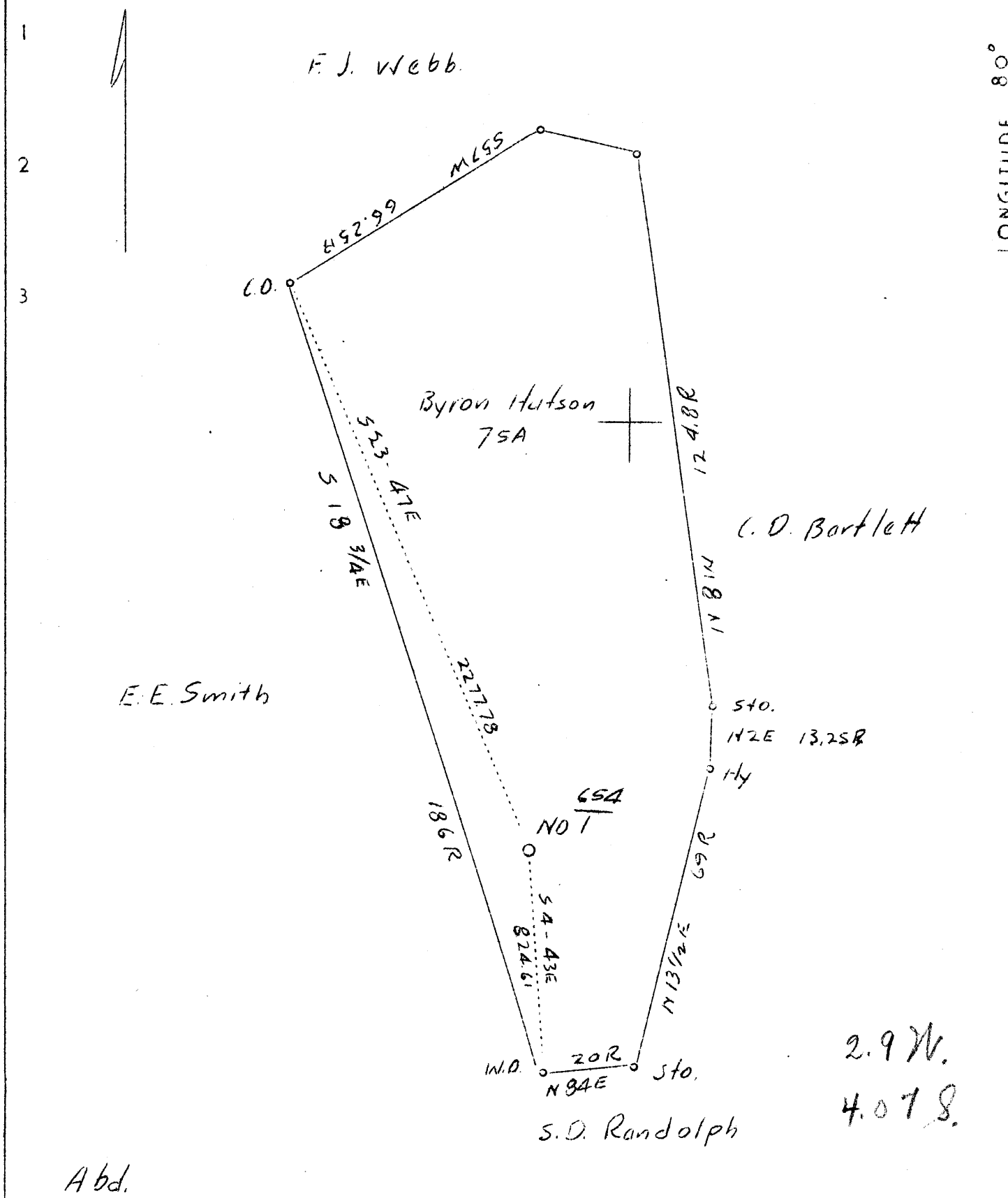


LATITUDE 39° 25'

LONGITUDE 80° 30'



Company	Union Gasoline & Oil Corp.
Address	Wheeling, W.Va.
Farm	Byron Hutson #1 - (654)
Tract	Acres 75 Lease No. 4883
Well (Farm) No.	1 Serial No. 654
Elevation (Spirit Level)	1020'
Quadrangle	Centerpoint (66)
County	Doddridge District McClellan
Engineer	H.D.O'Connor
Engineer's Registration No.	
File No.	Drawing No. Y-7-815
Date	Oct. 1, 1937 Scale 1"=30 Rods.

STATE OF WEST VIRGINIA
 Department of Mines
 OIL AND GAS DIVISION
 CHARLESTON

WELL LOCATION MAP
 File No. DOD-192A

+ Denotes location of well on United States Topographic Maps, scale 1 to 62,500, latitude and longitude lines being represented by border lines as shown.

— Denotes one inch spaces on border line of original tracing.

WEST VIRGINIA DEPARTMENT OF MINES
OIL AND GAS DIVISION

145

809-192-A

WELL RECORD

Permit No. Drilled in 1914

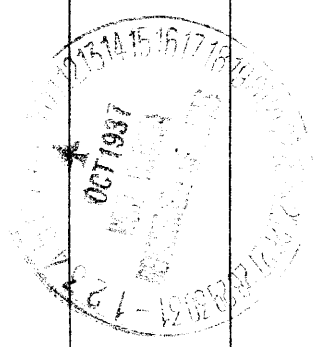
Oil or Gas Well Oil
(Kind)

Company Union Gasoline & Oil Corporation
 Address 209 Riley Law Building, Wheeling, W. Va.
 Farm Byron Hutson Acres 75
 Location (waters) _____
 Well No. 1-654 Elev. 1020
 District McClellan County Doddridge
 The surface of tract is owned in fee by Byron Hutson
 Address Wallace, W. Va.
 Mineral rights are owned by Union Gasoline & Oil Corporation
 Address Wheeling, W. Va.
 Drilling commenced May 2, 1914
 Drilling completed June 30, 1914
 Date shot July 3, 1914 Depth of shot Gordon Sand
 Open Flow /10ths Water in _____ Inch
 /10ths Merc. in _____ Inch
 Volume _____ Cu. Ft.
 Rock Pressure _____ lbs. _____ hrs.
 Oil five bbls., 1st 24 hrs.
 Fresh water _____ feet _____ feet
 Salt water _____ feet _____ feet

Casing and Tubing	Used in Drilling	Left in Well	Packers
Size			
16			Kind of Packer
13			
10	290'		Size of
8 1/4	1355'	1355'	
6 5/8	2127'	2127'	Depth set
5 3/16			
3			Perf. top
2			Perf. bottom
Liners Used			Perf. top
			Perf. bottom

CASING CEMENTED _____ SIZE _____ No. FT. _____ Date _____
 COAL WAS ENCOUNTERED AT 815 FEET 96 INCHES
 _____ FEET _____ INCHES FEET _____ INCHES
 _____ FEET _____ INCHES FEET _____ INCHES

Formation	Color	Hard or Soft	Top	Bottom	Oil Gas or Water	Depth Found	Remarks
Native Coal			285	290			
Pittsburgh Coal			815	823			
Little Dunkard			1237	1280			
Big Dunkard			1330	1340			
Gas Sand			1410	1450			
1st Salt Sand			1575	1595			
2nd Salt Sand			1690	1745			
3rd Salt Sand			1780	1805			
Maxon			1915	1950			
Little Lime			2005	2025			
Pencil Cove			2025	2040			
Big Lime			2040	2110			
Big Injun			2110	2230			
Gas			2155	2160			
Squaw			2256	2276			
Gantz			2350	2450			
Fifty Foot			2681	2711			
Thirty Foot			2816	2836			
Gordon Stray			2840	2870			
Gordon			2889	2912			
Pay			2902				
Total Depth			2926				



McClellan District, Doddridge County, W. Va.

By Union Gasoline & Oil Corp., 209 Riley Law Bldg., Wheeling, W. Va.

Drilled in 1914.

On 75 acres.

Elevation.....

Surface owned by Byron Hutson, Wallace, W. Va., and minerals by
Union Gasoline & Oil Corp., Wheeling, W. Va.

Drilling commenced May 2, 1914; completed, June 30, 1914.

Shot July 3, 1914, in Gordon Sand.

10" casing, 290' (pulled); 8 $\frac{1}{4}$ ", 1355'; 6 $\frac{5}{8}$ ", 2127'.

Coal was encountered at 815-823'.

Oil well. Abandonment reported to Dept. of Mines (filed) Oct. 9, 1937.

Record to RCT from Mrs. Griffith 11-28-37.

	Top.	Bottom.
Native coal	285	- 290
Pittsburgh Coal	815	- 823
Little Dunkard Sand	1237	- 1280
Big Dunkard Sand	1330	- 1340
Gas Sand	1410	- 1450
1st Salt Sand	1575	- 1595
2nd Salt Sand	1690	- 1745
3rd Salt Sand	1780	- 1805
Maxton Sand	1915	- 1950
Little Lime	2005	- 2025
Pencil Cave	2025	- 2040
Big Lime	2040	- 2110
Big Injun Sand (gas, 2155-2160')	2110	- 2230
Squaw Sand	2256	- 2276
Gantz Sand	2350	- 2450
50-Ft. Sand	2681	- 2711
30-Ft. Sand	2816	- 2836
Gordon Stray Sand	2840	- 2870
Gordon Sand (pay, 2902', oil)	2839	- 2912
Total depth		2926