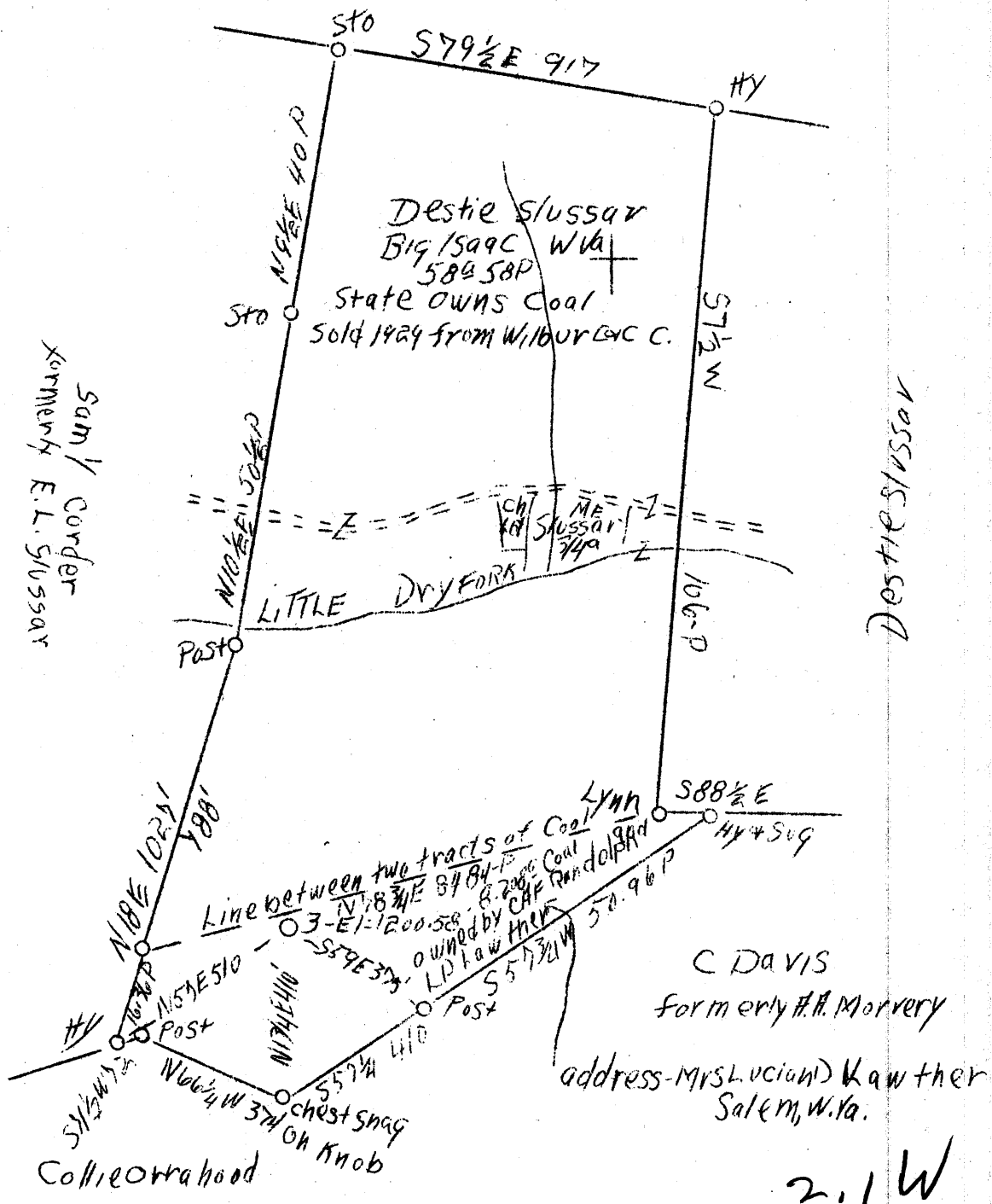


Margaret Adams



Sam / Corder formerly E.L. Slussar

Destie Slussar

Hbd

APR 11 1938

2.1 W
3.67

Company	South Penn Oil Co.
Address	411 Seventh Ave., Pittsburgh, Pa.
Farm	W.L. Slussar
Tract Acres	90
Lease No.	75008
Well (Farm) No.	3
Serial No.	(NE)
Quadrangle	Vadis
County	Doddridge
District	Greenbrier
Engineer	E.C. Tabler
Engineer's Registration No.	
File No.	
Drawing No.	
Date	Feb. 24 1938
Scale	1" = 100'

STATE OF WEST VIRGINIA
Department of Mines
OIL AND GAS DIVISION
CHARLESTON

WELL LOCATION MAP

File No. Dod-214-A

Denotes location of well on United States Topographic Maps, scale 1 to 62,500, latitude and longitude lines being represented by border lines as shown.
Denotes one inch spaces on border line of original tracing.