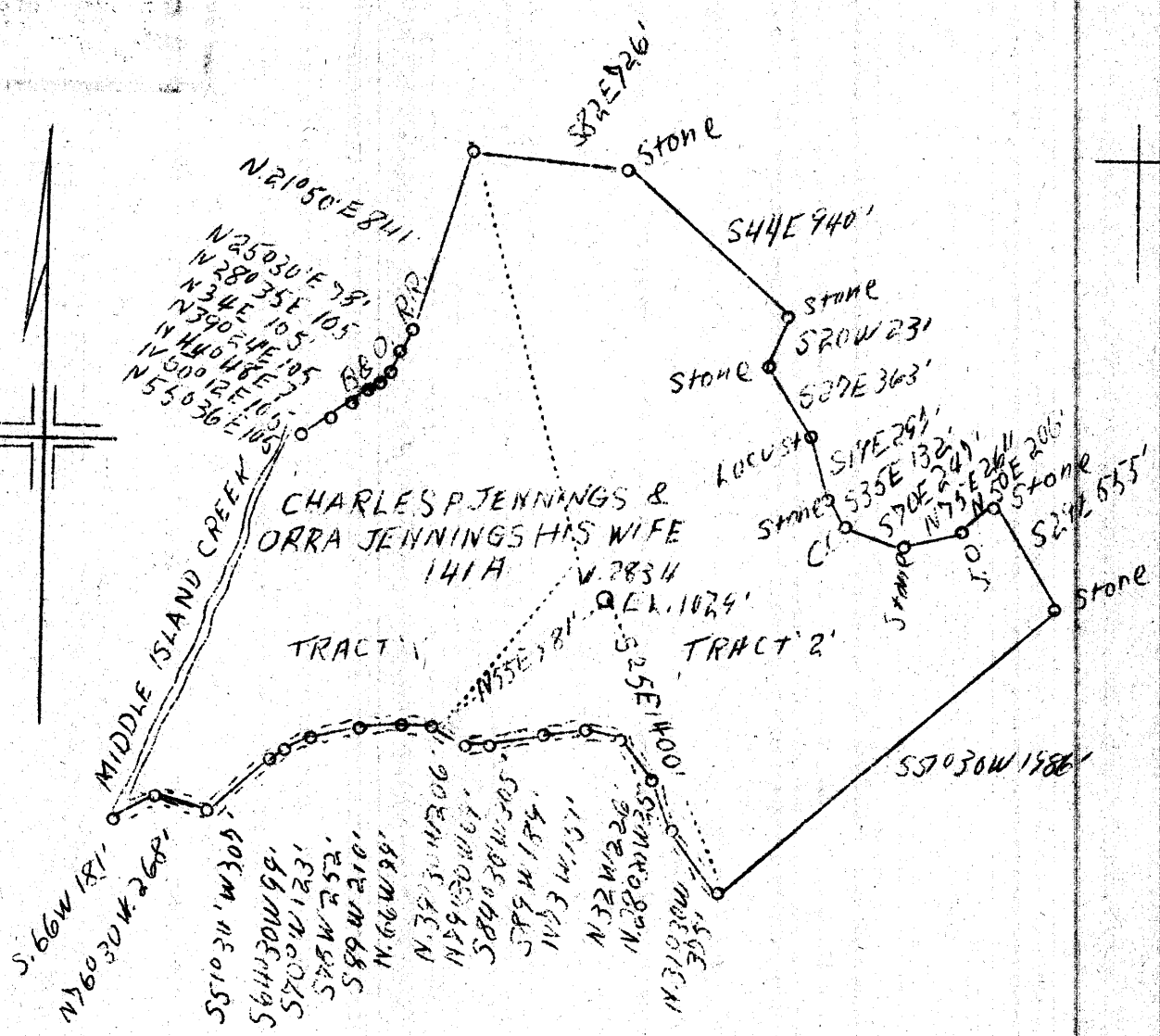


LATITUDE 39° 20'

LONGITUDE 80° 45'



COAL OWNED BY CHARLES P. JENNINGS ET. UX. & TOWN OF WEST UNION A MUNICIPAL CORPORATION

31 S
0.6 W
75' loc
0.30 S 391730
0.69 W 8045
Calc 15' loc
3.18 S
0.67 W
10a 9/2/58

Company The Manf. Light and Heat Co.
 Address 800 Union Trust Bldg., Pittsburgh Pa.
 Farm Charles P. Jennings et ux
 Tract 2 Acres 141 Lease No. 9177
 Well (Farm) No. 1 Serial No. 2834
 Elevation (Spirit Level) 1029'
 Quadrangle West Union S1E
 Engineer F.F. Murdock
 County Doddridge District West Union
 Engineer's Registration No. _____
 File No. _____ Drawing No. V7-989
 Date April 25, 1938 Scale 1"=200'

STATE OF WEST VIRGINIA
 Department of Mines
 OIL AND GAS DIVISION
 CHARLESTON

WELL LOCATION MAP
 File No. Dod-219-A

Denotes location of well on United States Topographic Maps, scale 1 to 62,500, latitude and longitude lines being represented by border lines as shown.

Denotes one inch spaces on border line of original tracing.

WEST VIRGINIA DEPARTMENT OF MINES
OIL AND GAS DIVISION

172

900-219-A

WELL RECORD

Permit No. Drilled in 1923

Oil or Gas Well **Gas**
(Kind)

Company **The Manufacturers Light & Heat Co.**
 Address **800 Union Trust Bldg., Pittsburgh, Pa.**
 Farm **Chas. P. Jennings** Acres **141**
 Location (waters).....
 Well No. **1 - 2834** Elev. **1029'**
 District **West Union** County **Doddridge**
 The surface of tract is owned in fee by **Chas P Jennings**
 Address **West Union, WVa.**
 Mineral rights are owned by **The Mfrs. Light & Heat Co**
800 Union Trust Bldg Address **Pittsburgh, Pa.**
 Drilling commenced **April 12, 1923**
 Drilling completed **May 12, 1923**
 Date shot..... Depth of shot.....
 Open Flow **38/10ths Water in** **2"** Inch
 /10ths Merc. in..... Inch
 Volume..... **260 mcf** Cu. Ft.
 Rock Pressure **40** lbs. hrs.
 Oil..... bbls., 1st 24 hrs.
 Fresh water..... feet..... feet
 Salt water..... feet..... feet

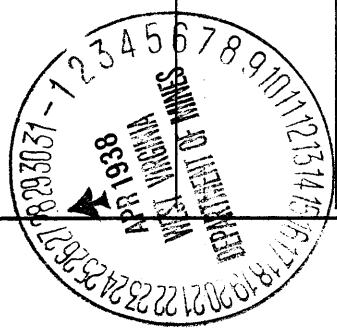
Casing and Tubing	Used in Drilling	Left in Well	Packers
Size			
16.....			Kind of Packer.....
13.....			
10.....	322'		Size of.....
8 1/4.....	996'	996'	
6 5/8.....	1727' 11"	1727' 11"	Depth set.....
5 3/16.....			
3.....			Perf. top.....
2.....			Perf. bottom.....
Liners Used.....			Perf. top.....
			Perf. bottom.....

CASING CEMENTED..... SIZE..... No. FT..... Date.....

COAL WAS ENCOUNTERED AT **314** FEET **?** INCHES
 FEET..... INCHES..... FEET..... INCHES
 FEET..... INCHES..... FEET..... INCHES

Formation	Color	Hard or Soft	Top	Bottom	Oil Gas or Water	Depth Found	Remarks
Pgh Coal			314	-	Break		
Line			670	682	Show of oil		
Little Dunkard			835	900			
Gas Sand			990	1038			
1st Salt Sand			1155	1250			
2nd Salt Sand			1265	1315			
3rd Salt Sand			1380	1480	Show of gas		
Maxon Sand			1635	1669	Gas 1671 - 1674		
Big Lime			1670	1729			
Big Injun			1729	1837	Gas 1730 - 1740		
Slate			1837	1888	Gas 1778 - 1782		
Total depth				1888			

Formation	Color	Hard or Soft	Top	Bottom	Oil, Gas or Water	Depth Found	Remarks



Date April 27th, 19 38

APPROVED THE MANUFACTURERS LIGHT & HEAT CO, Owner

By Sam H. Fowler
Land Dept. (Title) Office Manager.

West Union District, Doddridge County, W. Va.

By The Manufacturers Light & Heat Co., 800 Union Trust Bldg.,
Pittsburgh, Pa.

On 141 acres.

Elevation, 1029' L.

Surface owned by Chas. P. Jennings, West Union, W. Va., and minerals
by ML&HCo., Pgh., Pa.

Drilling commenced April 12, 1923; completed, May 12, 1923.

Open flow, 38/10ths Water in 2".

Rock pressure, 40 lbs.

10" casing, 322' (pulled); 8 $\frac{1}{4}$ " , 996'; 6 $\frac{5}{8}$ " , 1727' 11".

Coal was encountered at 314'.

Gas well. Abandonment reported to Dept. of Mines April 27, 1938.

Record to RCT from Mrs. Griffith May 27, 1938.

	Top.	Bottom.
Pittsburgh Coal (break)	314	
Lime (show of oil)	670	682
Little Dunkard Sand	835	900
Gas Sand	990	1038
1st Salt Sand	1155	1250
2nd Salt Sand	1265	1315
3rd Salt Sand (show of gas)	1380	1480
Maxton Sand (gas, 1671-1674')	1635	1669
Big Lime	1670	1729
Big Injun Sand (gas, 1730-1740')	1729	1837
Slate (gas, 1778-1782')		
Slate	1837	1888
Total depth		1888