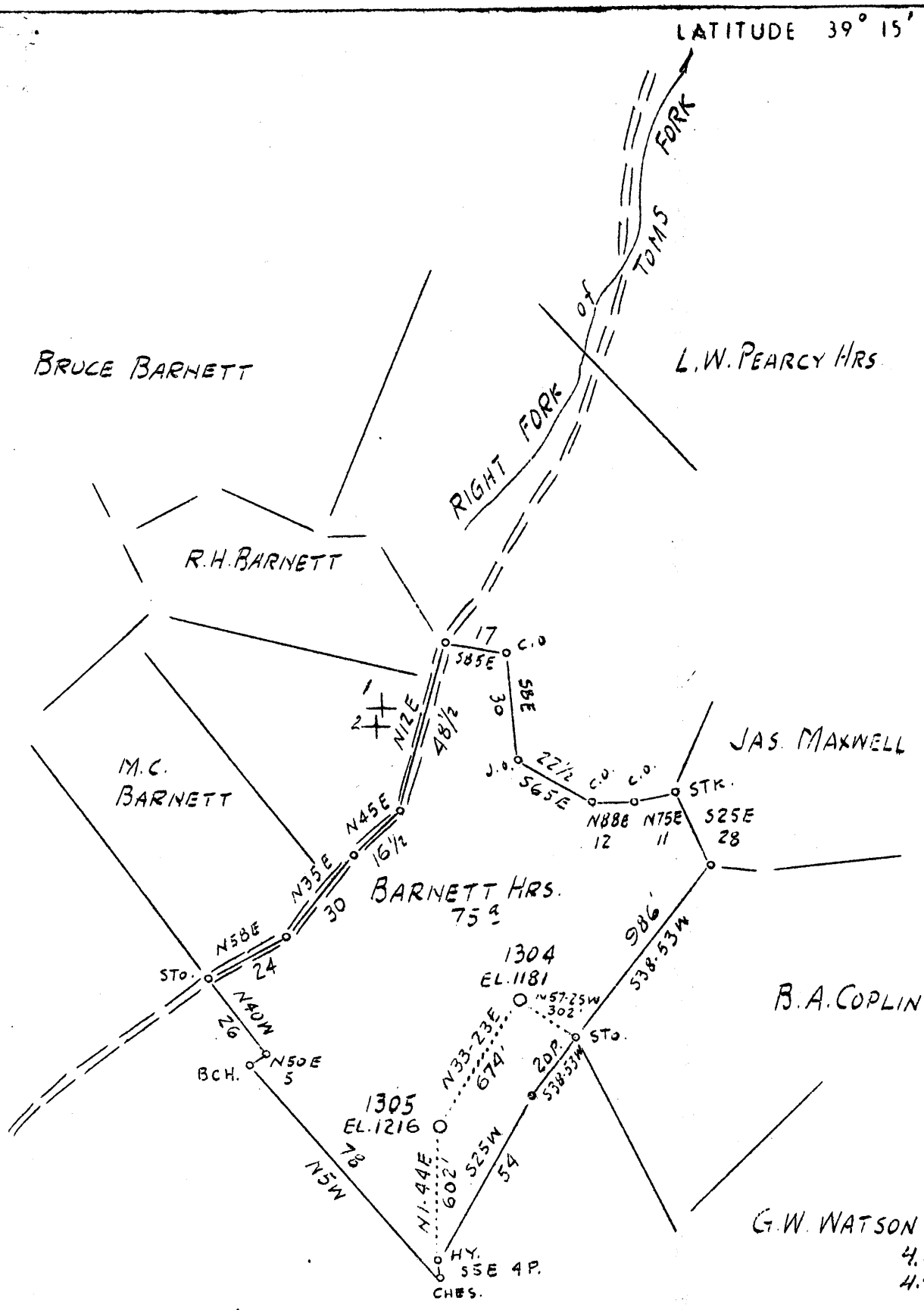


AM

LATITUDE 39° 15'

LONGITUDE 80° 40'



4.8 S }
4.4 W }
5.0 S }
4.5 W } 2

ABANDONMENTS 1304, 1305

F.A. 665 P34.35

Company	Hope Const'r. & Ref. Co.
Address	Clarksburg, W. Va.
Farm	Barnett Hrs.
Tract	One
Acres	75
Lease No.	5670
Well (Farm) No.	-
Serial No.	1304-1305
Elevation (SP)	1181 - 1216
Quadrangle	Vadis N/W.
County	Doddridge
District	Southwest
Engineer	W. M. Bowers
Eng. Reg. No.	900
Date	August 15, 1938
Scale	1" = 40 poles

STATE OF WEST VIRGINIA
 Department of Mines
 OIL & GAS DIVISION
 Charleston

WELL LOCATION MAP
 File No. DOD-235-A #1304
 WELL # 1305

x Denotes location of well on U. S. Topographic Maps, scale 1 to 62,500, latitude and longitude lines being represented by border lines as shown.

- Denotes one inch spaces on border line of original tracing.

WEST VIRGINIA DEPARTMENT OF MINES
OIL AND GAS DIVISION

183

WELL RECORD

Permit No.

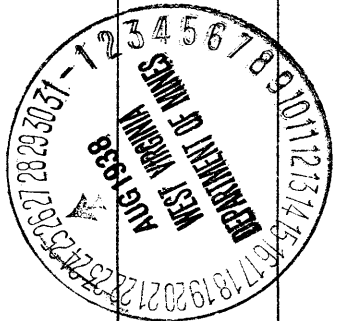
Oil or Gas Well **Oil**
(Kind)

Company **Hope Construction & Refining Company**
 Address **Clarksburg, W. Va.**
 Farm **Barnett Heirs** Acres **75**
 Location (waters) **R. F. Tom's Run**
 Well No. **1304** Elev. **1181**
 District **Southwest** County **Doddridge**
 The surface of tract is owned in fee by **Bruce Barnett**
 R #1. Address **Blandville, W.Va.**
 Mineral rights are owned by.....
 Address.....
 Drilling commenced **4-19-1901**
 Drilling completed **6-12-1901**
 Date shot **Last. 1-8-1929** Depth of shot **Gordon**
 Open Flow /10ths Water in..... Inch
 /10ths Merc. in..... Inch
 Volume..... Cu. Ft.
 Rock Pressure..... lbs..... hrs.
 Oil..... bbls., 1st 24 hrs.
 Fresh water **None recorded** feet..... feet
 Salt water **1530** feet..... feet

Casing and Tubing	Used in Drilling	Left in Well	Packers
Size			Kind of Packer.....
16.....			
13.....			
10.....	700	Pulled	Size of.....
8 1/4.....	1275	Pulled	
6 5/8 6 1/4"	1640	1640	Depth set.....
5 3/16.....			
3.....			Perf. top.....
2.....	2799	2799	Perf. bottom.....
Liners Used.....			Perf. top.....
			Perf. bottom.....

CASING CEMENTED..... SIZE..... No. FT..... Dat.....
Not cemented
 COAL WAS ENCOUNTERED AT..... FEET..... INCHES.....
No coal
 FEET..... INCHES..... FEET..... INCHES.....
 FEET..... INCHES..... FEET..... INCHES.....

Formation	Color	Hard or Soft	Top	Bottom	Oil Gas or Water	Depth Found	Remarks
Red Rock Cave			950	1200			
Cow Run Sand			1275	1300			
First Salt Sand			1530	1630	Water	In top of Salt Sand	
Mason Sand			1950	1970			
Big Lime			2075	2150			
Big Injun Sand			2150	2228	Show Gas	2170	
Berea Sand			2310	2468			
Gordon Stray Sand			2750	2768			
Gordon Sand			2775	2780	Oil	2775	
Total Depth			2800				



Formation	Color	Hard or Soft	Top	Bottom	Oil, Gas or Water	Depth Found	Remarks

Date August 25, 1938

APPROVED Hope Construction & Refining Co. Owner

By W. A. Reed Asst. General Supt.
 (Title)

Barnett

Southwest District, Doddridge County, W. Va.
 By Hope Construction & Refining Co., Clarksburg, W. Va.
 On 75 acres, on Right Fork of Toms Run.
 Elevation, 1181' L.
 Surface owned by Bruce Barnett, Route 1, Blandville, W. Va.
 Drilling commenced 4-19-1901; completed, 6-12-1901.
 Shot (last), 1-8-1929, in Gordon Sand.
 No fresh water recorded. Salt water at 1530'.
 10" casing, 700' (pulled); 8 $\frac{1}{4}$ " , 1275' (pulled); 8 $\frac{1}{4}$ " , 1640';
 2" tubing, 2799'.
 Casing not cemented.
 No coal was encountered.
 Oil well. Abandonment reported to Dept. of Mines Aug. 25, 1938.
 Record to RCT from Mrs. Griffith Sept. 22, 1938.

	Top.	Bottom.
Red rock cave	950	- 1200
Cow Run Sand	1275	- 1300
First Salt Sand (water in top of Salt Sand)	1530	- 1630
Maxton Sand	1950	- 1970
Big Lime	2075	- 2150
Big Injun Sand (show gas, 2170')	2150	- 2228
Berea? Sand	2310	- 2468
Gordon Stray Sand	2750	- 2768
Gordon Sand (oil, 2775')	2775	- 2780
Total depth		2800