

M

LATITUDE 39° 15'

LONGITUDE 80° 40'

BRUCE BARNETT

RT. FORK OF TOM'S FORK

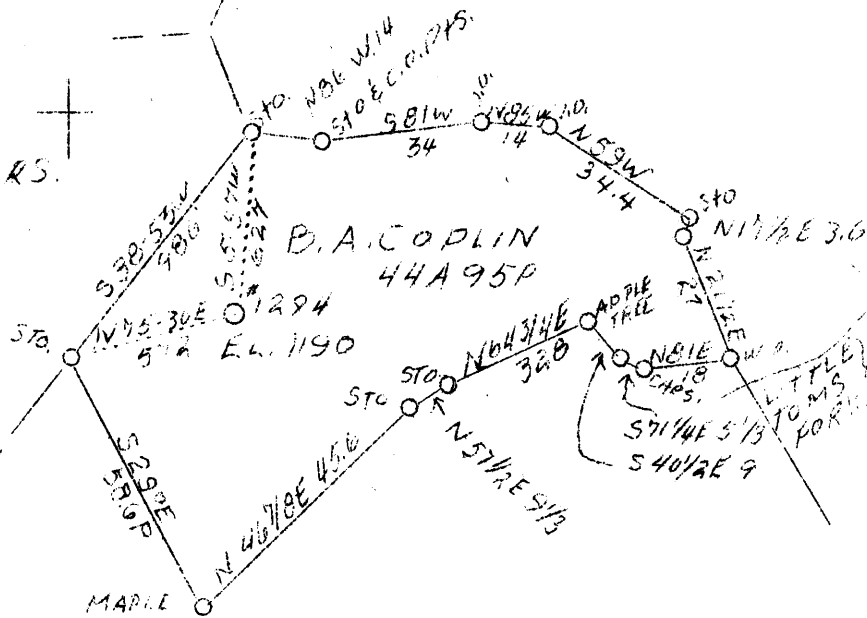
L.W. DEARCY HRS.

R. H. BARNETT

JAS. MAXWELL

M.C. BARNETT

BARNETT HRS.



S.W. STOUT

MAPLE

G. W. WATSON

4.22 W  
4.82 S

ABD.

F.B. 655 P 34, 35

Company	Hope Constr. & Ref. Co.
Address	Clarksburg, W. Va.
Farm	B. A. Coplin
Acres	44
Well (Farm) No.	One
Serial No.	1294
Elevation (SP)	1190 (B) N.W.
Quadrangle	Wadis
County	Doddridge
District	New Milton
Engineer	W. M. Bowers
Eng. Reg. No.	900
Date	Oct. 14, 1938
Scale	1" - 40 poles

STATE OF WEST VIRGINIA  
Department of Mines  
OIL & GAS DIVISION  
Charleston

WELL LOCATION MAP

File No. 110d-251-A

x Denotes location of well on U. S. Topographic Maps, scale 1 to 62,500, latitude and longitude lines being represented by border lines as shown.

- Denotes one inch spaces on border line of original tracing.