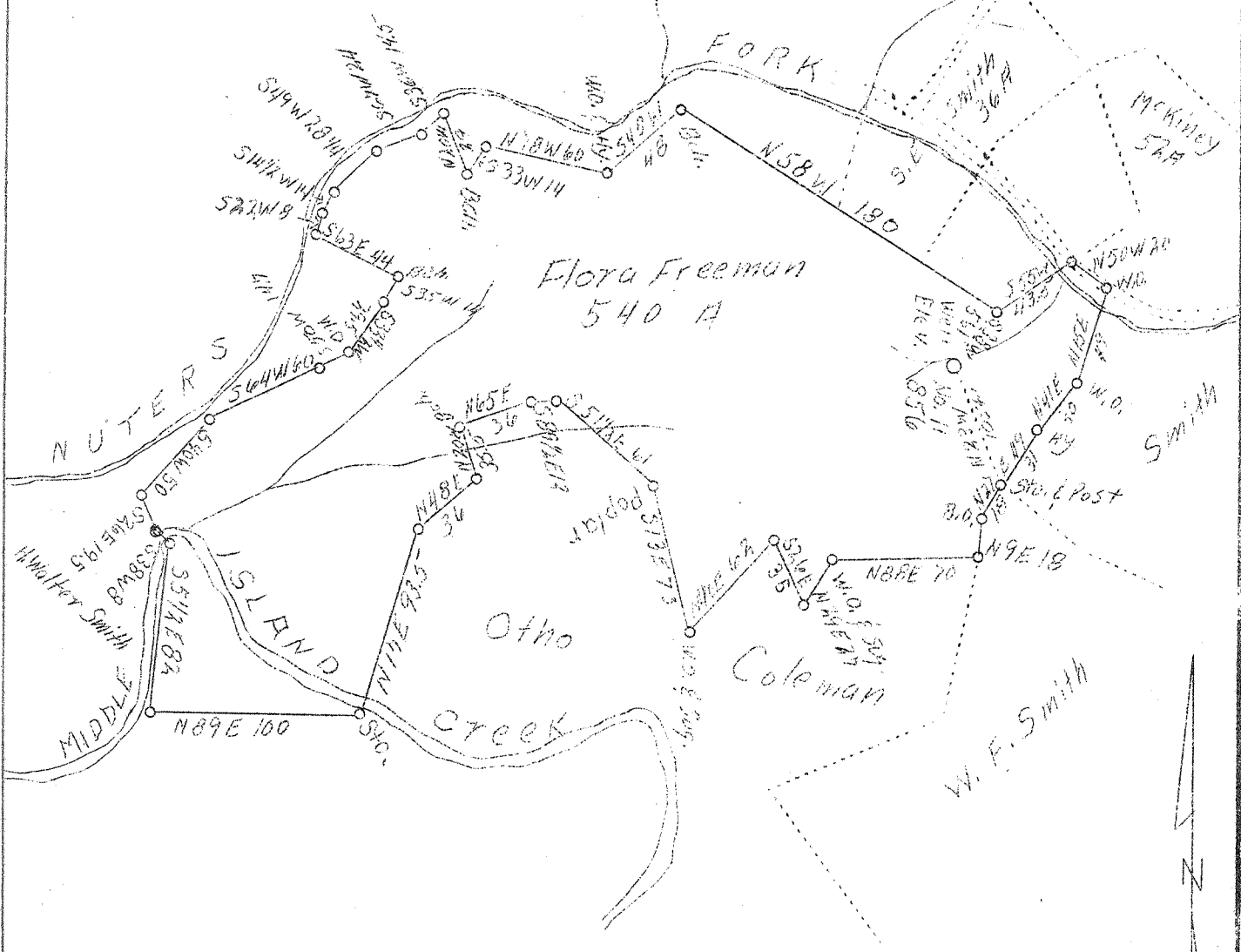


M

LATITUDE + 80° 45'

LONGITUDE 79° 30'

0.19 S  
167 W



7.5' + calc 15' loc bla  
0.155 39 20 9/30/98  
1.56 W 80 45

ABD.

Company	Clifton Oil & Gas Co.
Address	Parkersburg, W.Va.
Farm	Flora Freeman
Acres	540
Well (Farm) No.	11
El. (S. L.)	856
Quadrangle	West Union S.E.
County	Doddridge
District	West Union
Eng.	J.M. Martin
Eng. Reg. No.	84
Date	3/31/39
Scale	1" = 80 Poles

STATE OF WEST VIRGINIA  
Department of Mines  
OIL AND GAS DIVISION  
Charleston

WELL LOCATION MAP

File No. Dod-280-A

x Denotes location of well on U.S. Topographic Maps, scale 1 to 62,500, latitude and longitude lines being represented by border lines as shown.

- Denotes one inch spaces on border line of original tracing.

DODD-280A

*W. C. Clegg*

West Union District, Wellbore County, W. Va.

By Clifton Oil & Gas Co.

Location... *85013*

Drilling completed Dec. 13, 1905.

Oil casing, 27 1/2"; Gas, 17 1/2"; all left in.

Shot Dec. 20, 1905, with 30 lbs., at 1834-1835'

Shot Jan. 15, 1906, with 30 lbs., at 1834-1835'

Shot Dec. 20, 1905, with 30 lbs., at 1835-1836'

Shot Feb. 14, 1906, with 30 lbs., bottom shot, 1840'

Feb. 2, 1906, tubing dropped, 425' left in hole.

Record in Eastern Petroleum Co. Well Record book of Clifton Oil & Gas Co.

	Top	Bottom
Wellbore Coal	1812	1812
Big Sand	1812	1812
Big Sandstone	1812	1835
Shale Salt Sand	1835	1840
Second Salt Sand	1840	1847
Shale Sand	1847	1855
Shale Sand	1855	1860
Big Sand	1860	1860
Big Sandstone (gas, 1836') (first pay oil, 1834-1835')	1834	1835
Total depth		1860

STATE OF WEST VIRGINIA  
DEPARTMENT OF MINES  
OIL AND GAS DIVISION

223

WELL RECORD

AP 280-A  
Permit No. \_\_\_\_\_

Oil or Gas Well Oil  
(Kind)

Company Clifton Oil & Gas Company  
Address Box 1042 - Parkersburg, W. Va.  
Farm Flora Freeman Acres 540  
Location (waters) Middle Island & Nutters Park  
Well No. 11 Elev. 896  
District West Union County Doddridge  
The surface of tract is owned in fee by Jon. Freeman, Est.  
Address West Union, W. Va.  
Mineral rights are owned by Jon. Freeman Estate  
Address West Union, W. Va.  
Drilling commenced \_\_\_\_\_  
Drilling completed December 19, 1935  
Date shot 12/22/35 Depth of shot 1840-1855  
Open Flow /10ths Water in \_\_\_\_\_ Inch  
/10ths Merc. in \_\_\_\_\_ Inch  
Volume \_\_\_\_\_ Cu. Ft.  
Rock Pressure \_\_\_\_\_ lbs. \_\_\_\_\_ hrs.  
Oil \_\_\_\_\_ bbls., 1st 24 hrs.  
Fresh water \_\_\_\_\_ feet \_\_\_\_\_ feet  
Salt water \_\_\_\_\_ feet \_\_\_\_\_ feet

Casing and Tubing	Used in Drilling	Left in Well	Packers
Size			
16			Kind of Packer
13			
10			Size of
8 1/4		<u>777'</u>	
6 5/8		<u>1782'</u>	Depth set
5 3/16			
3			Perf. top
2			Perf. bottom
Liners Used			Perf. top
			Perf. bottom

CASING CEMENTED \_\_\_\_\_ SIZE \_\_\_\_\_ No. FT. \_\_\_\_\_ Date \_\_\_\_\_  
COAL WAS ENCOUNTERED AT 512 FEET \_\_\_\_\_ INCHES  
\_\_\_\_\_ FEET \_\_\_\_\_ INCHES \_\_\_\_\_ FEET \_\_\_\_\_ INCHES  
\_\_\_\_\_ FEET \_\_\_\_\_ INCHES \_\_\_\_\_ FEET \_\_\_\_\_ INCHES

Formation	Color	Hard or Soft	Top	Bottom	Oil Gas or Water	Depth Found	Remarks
Fgh. Coal			512				
Sand Big Red			624				
Big Dunbar Sand			1015	1035			
First Salt Sand			1345	1430			
second " "			1470	1547			
Water							
Maxon Sand							
Little Line			1750	1755			
Pencil Cove			1755	1763			
Big Line			1763	1833			
Big Injun Sand			1833				
Gas			1836				
First Pay (oil)			1838	1855			
Total Depth				1866			



Formation	Color	Hard or Soft	Top	Bottom	Oil, Gas or Water	Depth Found	Remarks

Date April 13, 1927

APPROVED [Signature], Owner

By Gene M. [Signature]

(Title)