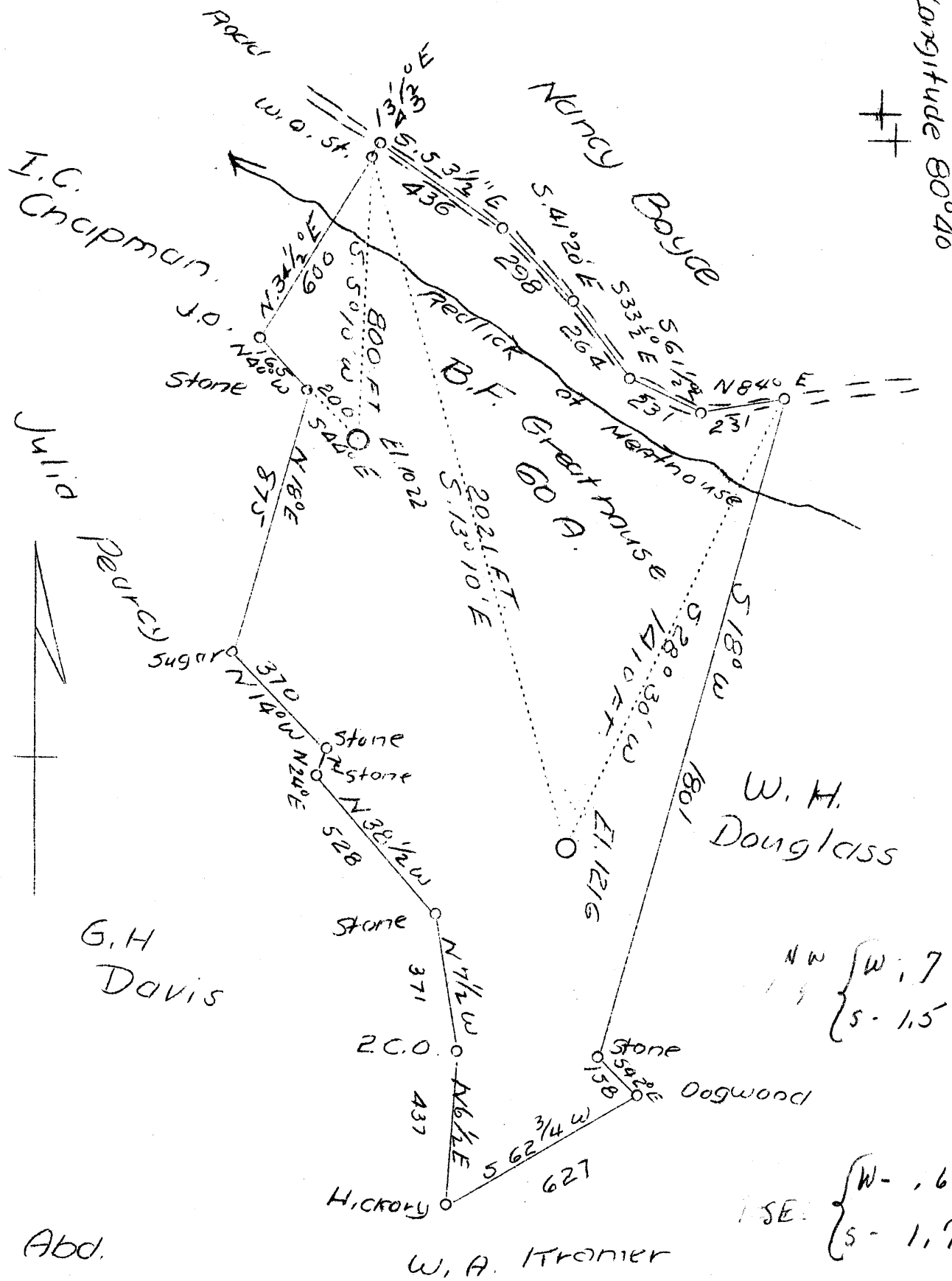


Latitude 39° 15'

Longitude 80° 40'



Company H. E. Milliken & A. M. Snider
 Address Waynesburg, Pa.
 Farm B. F. Greathouse
 Tract 1
 Acres 60
 Wells 4793 & 4811 - Abd.
 Elevation -
 Quadrangle Vadis N. W.
 District New Milton
 County Doddridge
 Engineer David Wood
 Eng. Reg. No. 233-16-5767
 Date August 30, 1939
 Scale 1" = 400'

STATE OF WEST VIRGINIA
 Department of Mines
 OIL & GAS DIVISION
 Charleston

WELL LOCATION MAP

File No. Doc 293-4 A

STATE OF WEST VIRGINIA
DEPARTMENT OF MINES
OIL AND GAS DIVISION

243

WELL RECORD

AE
Permit No. 293-A

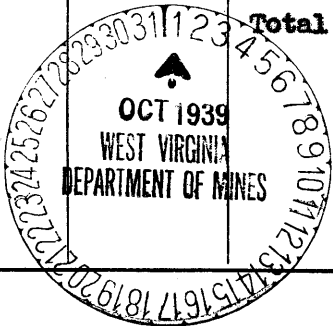
Oil or Gas Well Oil
(Kind)

Company Milliken & Snider
Address Waynesburg, Pa.
Farm B. F. Greathouse Acres 60
Location (waters) Redlick of Meathouse
Well No. 4793 Elev. 1022
District New Milton County Doddridge
The surface of tract is owned in fee by B. F. Greathouse
Address New Milton, W.Va.
Mineral rights are owned by _____
Address _____
Drilling commenced 1921
Drilling completed March 10, 1921.
Date shot No record Depth of shot In Injun
Open Flow /10ths Water in _____ Inch
/10ths Merc. in _____ Inch
Volume _____ Cu. Ft.
Rock Pressure _____ lbs. _____ hrs.
Oil _____ bbls., 1st 24 hrs.
Fresh water None recorded feet _____ feet
Salt water None recorded feet _____ feet

| Casing and Tubing | Used in Drilling | Left in Well | Packers |
|-------------------|------------------|--------------|----------------|
| Size | | | Kind of Packer |
| 16 | | | |
| 13 | | | |
| 10 | 435 | 435 | Size of |
| 8 1/4 | 1229 | 1229 | |
| 6 5/8 | | | Depth set |
| 5 3/16 | 2067 | 2067 | |
| 3 | | | Perf. top |
| 2 | 2184 | 2184 | Perf. bottom |
| Liners Used | | | Perf. top |
| | | | Perf. bottom |

CASING CEMENTED _____ SIZE _____ No. FT. _____ Date _____
Not cemented
COAL WAS ENCOUNTERED AT 145 FEET 24 INCHES
687 FEET 120 INCHES FEET _____ INCHES
FEET _____ INCHES FEET _____ INCHES

| Formation | Color | Hard or Soft | Top | Bottom | Oil Gas or Water | Depth Found | Remarks |
|---------------------|-------|--------------|------|--------|------------------|-------------------|---------|
| Red Rock | | | 16 | 100 | | | |
| Slate | | | 100 | 145 | | | |
| Coal | | | 145 | 147 | | | |
| Lime & Sand | | | 250 | 280 | | | |
| Slate | | | 280 | 340 | | | |
| Lime | | | 355 | 365 | | | |
| Sand | | | 372 | 382 | | | |
| Slate | | | 382 | 400 | | | |
| Red Rock | | | 400 | 425 | | | |
| Sand | | | 425 | 465 | | | |
| Sand | | | 530 | 575 | | | |
| Sand | | | 652 | 687 | | | |
| Pittsburgh Coal | | | 687 | 697 | | | |
| Sand | | | 712 | 742 | | | |
| Little Dunkard Sand | | | 845 | 860 | | | |
| Red Rock | | | 860 | 916 | | | |
| Slate | | | 916 | 940 | | | |
| Red Rock | | | 940 | 965 | | | |
| Lime | | | 965 | 1015 | | | |
| Sand | | | 1035 | 1055 | | | |
| Lime | | | 1120 | 1130 | | | |
| Lime | | | 1150 | 1158 | | | |
| Sand | | | 1220 | 1260 | | | |
| Sand | | | 1405 | 1426 | | | |
| First Salt Sand | | | 1434 | 1463 | | | |
| Second Salt Sand | | | 1490 | 1674 | Show Oil | 1495 | |
| Third Salt Sand | | | 1730 | 1751 | | | |
| Sand | | | 1855 | 1920 | | | |
| Lime | | | 1965 | 2038 | | | |
| Pencil Cave | | | 2038 | 2045 | | | |
| Big Lime | | | 2045 | 2098 | | | |
| Big Injun Sand | | | 2098 | 2167 | Oil Gas | 2167 2129-2149 | |
| Total Depth | | | | 2167 | | | |



| Formation | Color | Hard or Soft | Top | Bottom | Oil, Gas or Water | Depth Found | Remarks |
|-----------|-------|--------------|-----|--------|-------------------|-------------|---------|
| | | | | | | | |

Date September 28, 1939

APPROVED Milliken & Snider, Owner

By A M Snider
(Title)