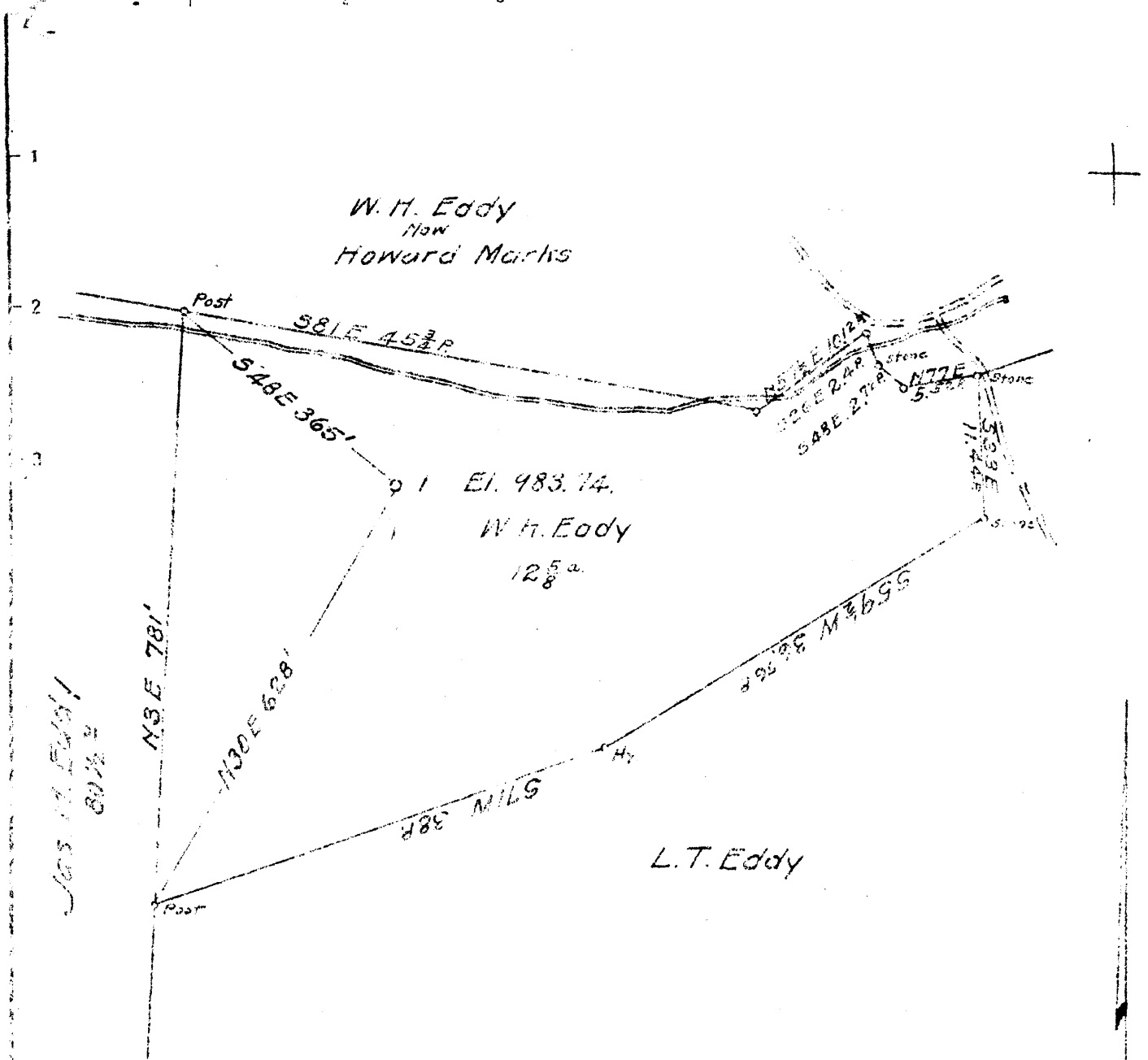


Latitude 39 15'

Longitude 80 35'



W. H. Eddy  
Now  
Howard Marks

W. H. Eddy  
12<sup>5</sup>/<sub>8</sub> a.

L. T. Eddy

See M. Eddy  
60 1/2 a

Surface  
Howard Marks  
Miletus, W. Va.  
Doddridge Co.

Coal  
Michael Wright  
503 East Park Ave.  
Fairmont, W. Va.

W - 4  
S - 1, 35

New Location  
Drill Deeper  
Abandonment X

Company South Penn Oil Co.  
 Address 411-7th. Ave Pittsburgh, Pa.  
 Farm W. H. Eddy  
 Tract \_\_\_\_\_ Acres 13 Lease No. 64926  
 Well (Farm) No. 1 Serial No. \_\_\_\_\_  
 Elevation (Spirit Level) 983.74  
 Quadrangle Vadis N.C.  
 County Doddridge District Greenbrier  
 Engineer E. C. Tabler  
 Engineer's Registration No. \_\_\_\_\_  
 File No. \_\_\_\_\_ Drawing No. \_\_\_\_\_  
 Date Aug 25 1939 Scale 1" = 200'

STATE OF WEST VIRGINIA  
 DEPARTMENT OF MINES  
 OIL AND GAS DIVISION  
 CHARLESTON

WELL LOCATION MAP  
 FILE NO. DOD-297A

+ Denotes location of well on United States Topographic Maps, scale 1 to 62,500, latitude and longitude lines being represented by border lines as shown.

- Denotes one inch spaces on border line of original tracing.

WEST VIRGINIA DEPARTMENT OF MINES  
OIL AND GAS DIVISION

241

WELL RECORD

Ab 297-A  
Permit No.

OIL  
Oil or Gas Well (Kind)

Company **South Penn Oil Company**  
Address **411 Seventh Ave., Pittsburgh, Pa.**  
Farm **W. H. Eddy** Acres **13**  
Location (waters) **Hughes Fork of Buckeye Fk. of Middle Island**  
Well No. **1** Elev. **983.74'**  
District **Greenbrier** County **Doddridge**  
The surface of tract is owned in fee by **Howard Marks**  
**Doddridge Co.** Address **Miletus, W. Va.**  
Mineral rights are owned by **I.G. Carter et al**  
**203 Bond St.** Address **Clarksburg, W. Va.**  
Drilling commenced **June 20, 1918**  
Drilling completed **August 17, 1918**  
Date shot **Aug. 21-1918** Depth of shot **Gordon**  
**Sept. 3-1936** **Gordon**  
Open Flow /10ths Water in **--** Inch  
/10ths Merc. in **--** Inch  
Volume **--** Cu. Ft.  
Rock Pressure **--** lbs. **---** hrs.  
Oil **15** bbls., 1st 24 hrs.  
Fresh water **--** feet **--** feet  
Salt water **--** feet **--** feet

Casing and Tubing	Used in Drilling	Left in Well	Packers
Size			Kind of Packer
16			
13			
10	<b>274 (Pulled)</b>		Size of
8 1/4	<b>1115</b>		
6 5/8	<b>2063</b>		Depth set
5 3/16			
3			Perf. top
2			Perf. bottom
Liners Used			Perf. top
			Perf. bottom

CASING CEMENTED **--** SIZE **--** No. FT. **--** Date **--**

COAL WAS ENCOUNTERED AT **615** FEET **60** INCHES  
**--** FEET **--** INCHES **--** FEET **--** INCHES  
**--** FEET **--** INCHES **--** FEET **--** INCHES

Formation	Color	Hard or Soft	Top	Bottom	Oil Gas or Water	Depth Found	Remarks
Pittsburgh Coal			615	620			
Little Dunkard Sand			980	995			
Big Dunkard Sand			1065	1124			
First Salt Sand			1450	1465			
Second Salt Sand			1510	1695			
Maxon Sand			1756	1776			
Little Lime			1903	1923			
Big Lime			1954	2000			
Big Injun Sand			2000	2110			
Squaw Sand			2140	2245			
Gantz Sand			2382	2410			
Fifty Foot Sand			2483	2500			
Thirty Foot Sand			2585	2609			
Stray Sand			2669	2691			
Gordon Sand			2713		011	2676-2682	
					011	2718-2723	
<b>Total Depth</b>				<b>2727</b>			

