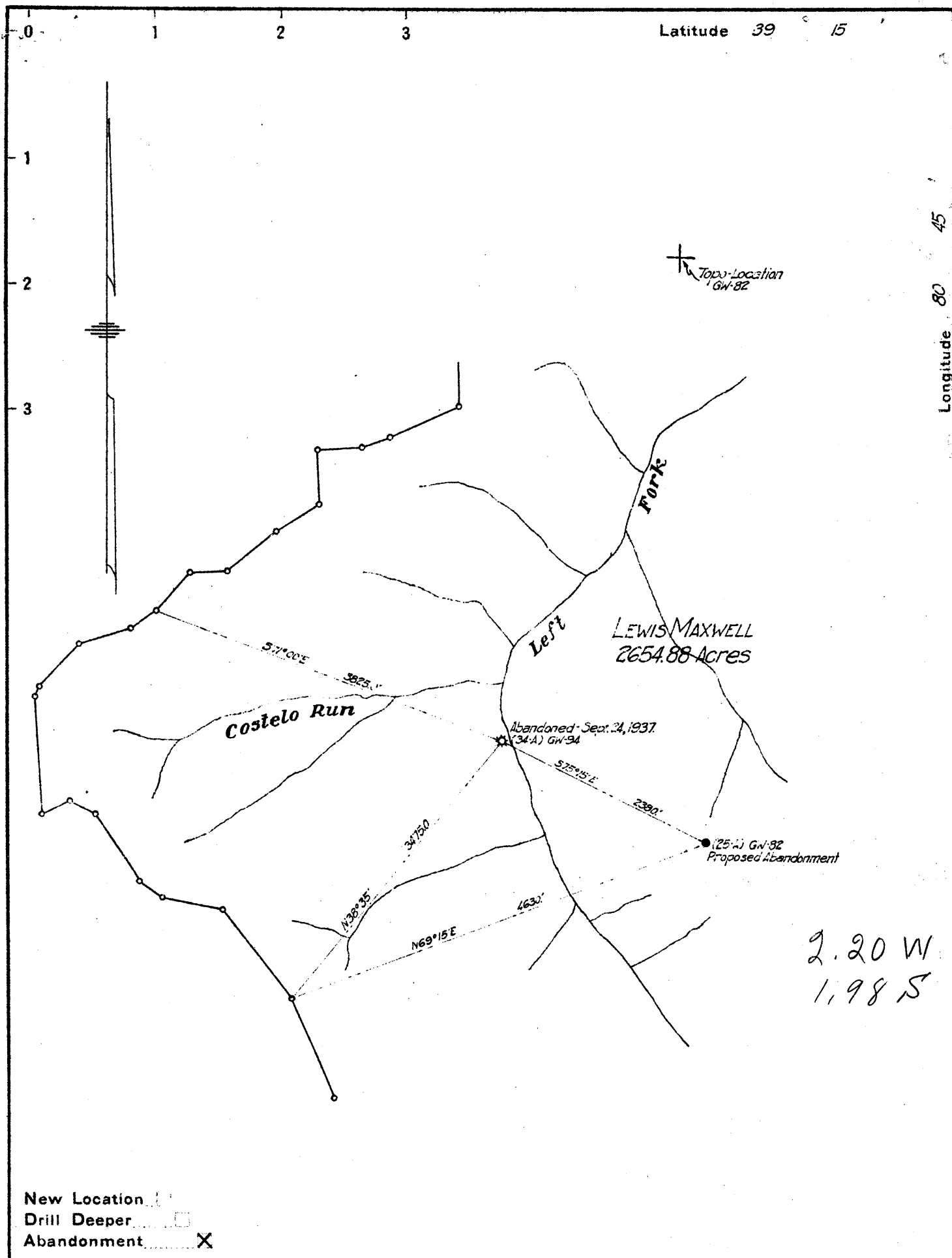


23

Latitude 39 15

Longitude 80 45



2.20 W
1.98 S

Company COLUMBIAN CARBON COMPANY
 Address P.O. Box #1240-CHARLESTON, W. VA.
 Farm LEWIS MAXWELL
 Tract _____ Acres 2654.88 Lease No. C-32-A
 Well (Farm) No. 25A Serial No. GW-82
 Elevation (Spirit Level) 1005
 Quadrangle HOLBROOK-NE
 County DODDRIDGE District WEST UNION
 Engineer J. A. Holschaw
 Engineer's Registration No. Surveyor
 File No. _____ Drawing No. _____
 Date MARCH 20, 1940 Scale 1 in. = 1320 ft.

STATE OF WEST VIRGINIA
 DEPARTMENT OF MINES
 OIL AND GAS DIVISION
 CHARLESTON

WELL LOCATION MAP
 FILE NO. DoD-307A

+ Denotes location of well on United States Topographic Maps, scale 1 to 62,500, latitude and longitude lines being represented by border lines as shown.

- Denotes one inch spaces on border line of original tracing.

STATE OF WEST VIRGINIA
DEPARTMENT OF MINES
OIL AND GAS DIVISION

WELL RECORD

250

OIL &
GAS

Permit No. 307-A

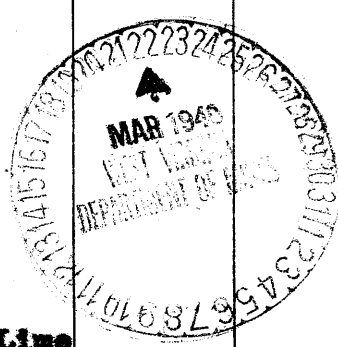
Oil or Gas Well GAS
(Kind)

Company COLUMBIAN CARBON COMPANY
 Address Box 1240, Charleston, W. Va.
 Farm Lewis Maxwell Acres 2654.88
 Location (waters) _____
 Well No. 25-A (OW-82) Elev. 1005'
 District West Union County Doddridge
 The surface of tract is owned in fee by West Union Bank
Spec. Reg. for Lewis Maxwell Estate, West
Union, W. Va. Address _____
 Mineral rights are owned by 'Same'
 Address _____
 Drilling commenced Sept. 6, 1918
 Drilling completed Oct. 9, 1918
 Date shot 10-12-18 Depth of shot ? to 2360
 Open Flow /10ths Water in _____ Inch
 /10ths Merc. in _____ Inch
 Volume 126 M. 1-1-20 Cu. Ft.
 Rock Pressure 70# 1-1-20 lbs. 1hr. 40 Min. xx
 Oil _____ bbls., 1st 24 hrs.
 Fresh water _____ feet _____ feet
 Salt water _____ feet _____ feet

| Casing and Tubing | Used in Drilling | Left in Well | Packers |
|-------------------------|------------------|--------------|----------------------|
| Size | | | |
| <u>xx Conductor 16'</u> | | <u>16'</u> | Kind of Packer _____ |
| 13 " | | | |
| 10 " | <u>529'5"</u> | <u>None</u> | Size of _____ |
| 8 1/4 " | <u>1136'5"</u> | <u>None</u> | |
| 6 5/8 " | <u>1623'</u> | <u>1623'</u> | Depth set _____ |
| 5 3/16 " | | | |
| 3 " | | | Perf. top _____ |
| 2 " | <u>?</u> | <u>?</u> | Perf. bottom _____ |
| Liners Used _____ | | | Perf. top _____ |
| | | | Perf. bottom _____ |

CASING CEMENTED _____ SIZE _____ No. FT. _____ Date _____
 COAL WAS ENCOUNTERED AT _____ FEET _____ INCHES
 _____ FEET _____ INCHES _____ FEET _____ INCHES
 _____ FEET _____ INCHES _____ FEET _____ INCHES

| Formation | Color | Hard or Soft | Top | Bottom | Oil Gas or Water | Depth Found | Remarks |
|-------------|-------|--------------|------|--------|------------------|-------------|----------------------|
| Red Rock | | | 0 | 50 | | | |
| Sand | | | 50 | 65 | Water | 55 | 3 blr. per H |
| Slate | | | 65 | 90 | | | |
| Lime | | | 90 | 110 | | | |
| Red Rock | | | 110 | 190 | | | |
| Lime | | | 190 | 220 | | | |
| Red Rock | | | 220 | 310 | | | |
| Lime | | | 310 | 325 | | | |
| Slate | | | 325 | 370 | | | |
| Red Rock | | | 370 | 400 | | | |
| Lime | | | 400 | 415 | | | |
| Red Rock | | | 415 | 450 | | | |
| Slate | | | 450 | 475 | | | |
| Red Rock | | | 475 | 485 | | | |
| Slate | | | 485 | 490 | | | |
| Red Rock | | | 490 | 520 | | | |
| Lime | | | 520 | 545 | | | |
| Sand | | | 545 | 585 | | | |
| Slate | | | 585 | 610 | | | |
| Red Rock | | | 610 | 640 | | | |
| Sand | | | 640 | 675 | | | |
| Slate | | | 675 | 750 | | | |
| Lime | | | 750 | 770 | | | |
| Gas Sand | | | 770 | 835 | Gas | 770-835 | |
| Lime | | | 835 | 870 | | | |
| Slate | | | 870 | 880 | | | |
| Lime | | | 880 | 900 | | | |
| Sand | | | 900 | 940 | | | |
| Lime | | | 940 | 965 | | | |
| Sand | | | 965 | 995 | | | |
| Slate | | | 995 | 1020 | | | |
| Sand | | | 1020 | 1050 | | | |
| Slate | | | 1050 | 1120 | | | |
| Sand | | | 1120 | 1185 | Water | 1148 | Enough to drill with |
| Slate | | | 1185 | 1360 | | | |
| Sand | | | 1360 | 1375 | | | |
| Slate | | | 1375 | 1415 | | | |
| Lime | | | 1415 | 1430 | | | |
| Slate | | | 1430 | 1545 | | | |
| Little Lime | | | 1545 | 1560 | | | |



| Formation | Color | Hard or Soft | Top | Bottom | Oil, Gas or Water | Depth Found | Remarks |
|-------------------|-------|--------------|------|--------|-------------------|-------------|---------|
| Pencil Cave | | | 1560 | 1583 | | | |
| Big Lime | | | 1583 | 1680 | | | |
| Big Injun Sand | | | 1680 | 1775 | Gas | 1688-1702 | SLM |
| Slate & Shells | | | 1775 | 1905 | | | |
| Sand | | | 1905 | 1955 | | | |
| Slate | | | 1955 | 1990 | | | |
| 50 Sand | | | 1990 | 2050 | | | |
| Slate | | | 2050 | 2125 | | | |
| 30 Foot Sand | | | 2125 | 2150 | | | |
| Slate & Shells | | | 2150 | 2335 | | | |
| Gordon Stray Sand | | | 2335 | 2345 | | | |
| Brake Slate | | | 2345 | 2353 | | | |
| Gordon Sand | | | 2353 | 2360 | | | |
| Slate | | | 2360 | 2381 | Oil | 2354-2358 | |
| TOTAL DEPTH | | | | 2381 | | | |

Date **March 20,** 19**40**

APPROVED **COLUMBIAN CARBON COMPANY**, Owner

By *O. W. Van Petten*
O. W. Van Petten (Title) **Supt.**