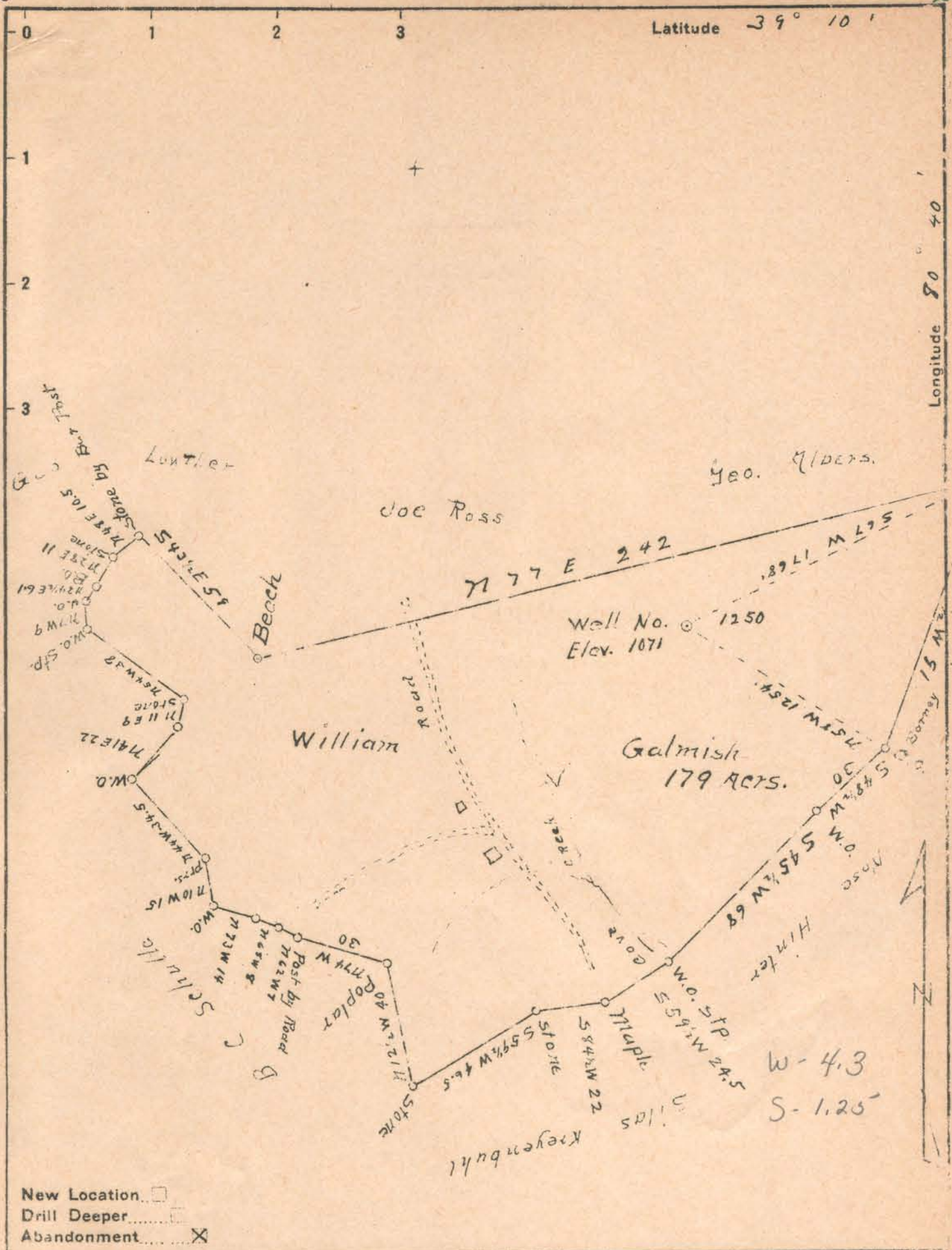


m



Company Chalfant and Wallis,  
 Address West Union, W. Va.  
 Farm William Galmish,  
 Tract \_\_\_\_\_ Acres 179 Lease No. \_\_\_\_\_  
 Well (Farm) No. 1250 Serial No. \_\_\_\_\_  
 Elevation (Spirit Level) 1071  
 Quadrangle Varlis W  
 County Doddridge District COYE  
 Engineer J.M. Martin,  
 Engineer's Registration No. 84  
 File No. \_\_\_\_\_ Drawing No. \_\_\_\_\_  
 Date Oct. 18, 1940 Scale 40 P. 1

STATE OF WEST VIRGINIA  
 DEPARTMENT OF MINES  
 OIL AND GAS DIVISION  
 CHARLESTON

WELL LOCATION MAP  
 FILE NO. DOD-346A

+ Denotes location of well on United States Topographic Maps, scale 1 to 62,500. latitude and longitude lines being represented by border lines as shown.  
 - Denotes one inch spaces on border line of original tracing.