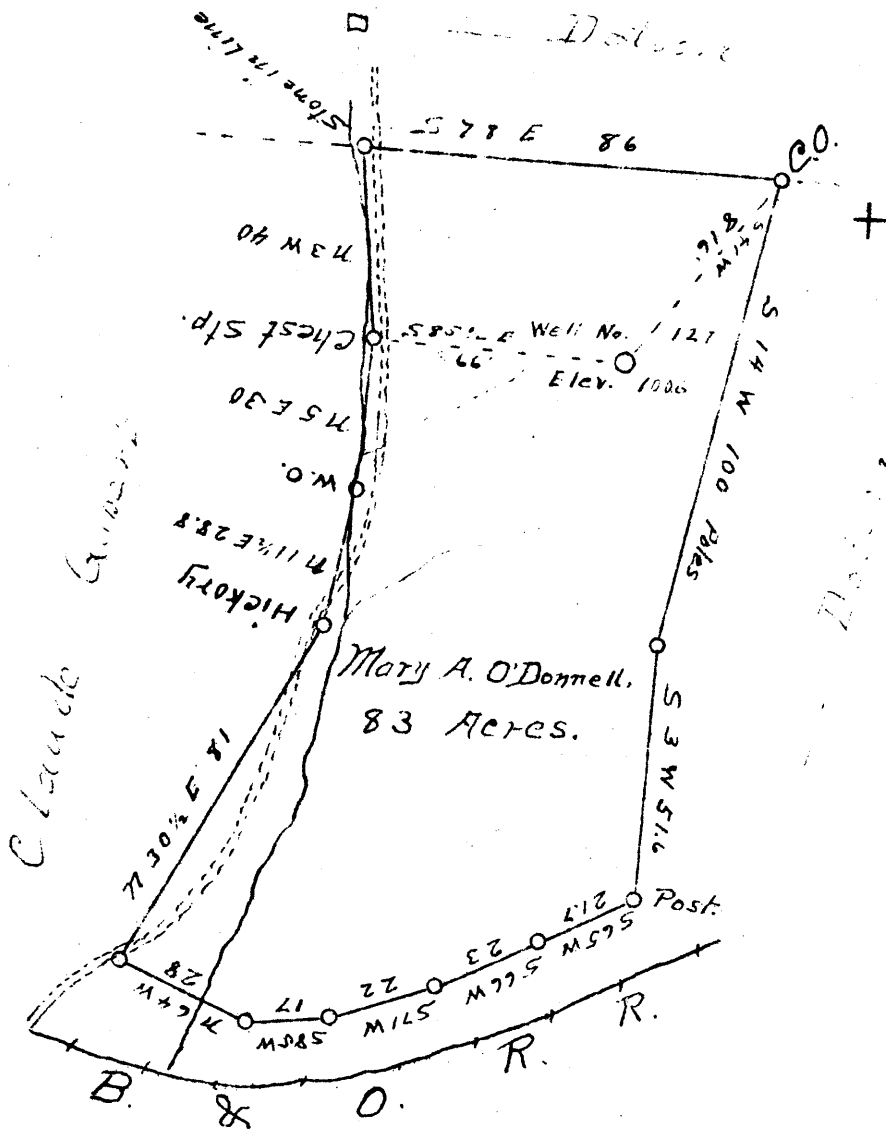


Latitude 37° 20'

Longitude 80° 50'



W 2.8  
S 3.65

- New Location
- Drill Deeper
- Abandonment

Company Chalfant & Wallis  
 Address West Union, W. Va.  
 Farm Mary A. O'Donnell, Lease.  
 Tract One Acres 83 Lease No. \_\_\_\_\_  
 Well (Farm) No. 127 Serial No. \_\_\_\_\_  
 Elevation (Spirit Level) 1006  
 Quadrangle West Union  
 County Doddridge District Central  
 Engineer J. M. Martin  
 Engineer's Registration No. 84  
 File No. \_\_\_\_\_ Drawing No. \_\_\_\_\_  
 Date Dec. 23, 1940 Scale 40 P = 1 in.

STATE OF WEST VIRGINIA  
 DEPARTMENT OF MINES  
 OIL AND GAS DIVISION  
 CHARLESTON

WELL LOCATION MAP  
 FILE NO. DOD-354A

+ Denotes location of well on United States Topographic Maps, scale 1 to 62,500, latitude and longitude lines being represented by border lines as shown.  
 - Denotes one inch spaces on border line of original tracing.