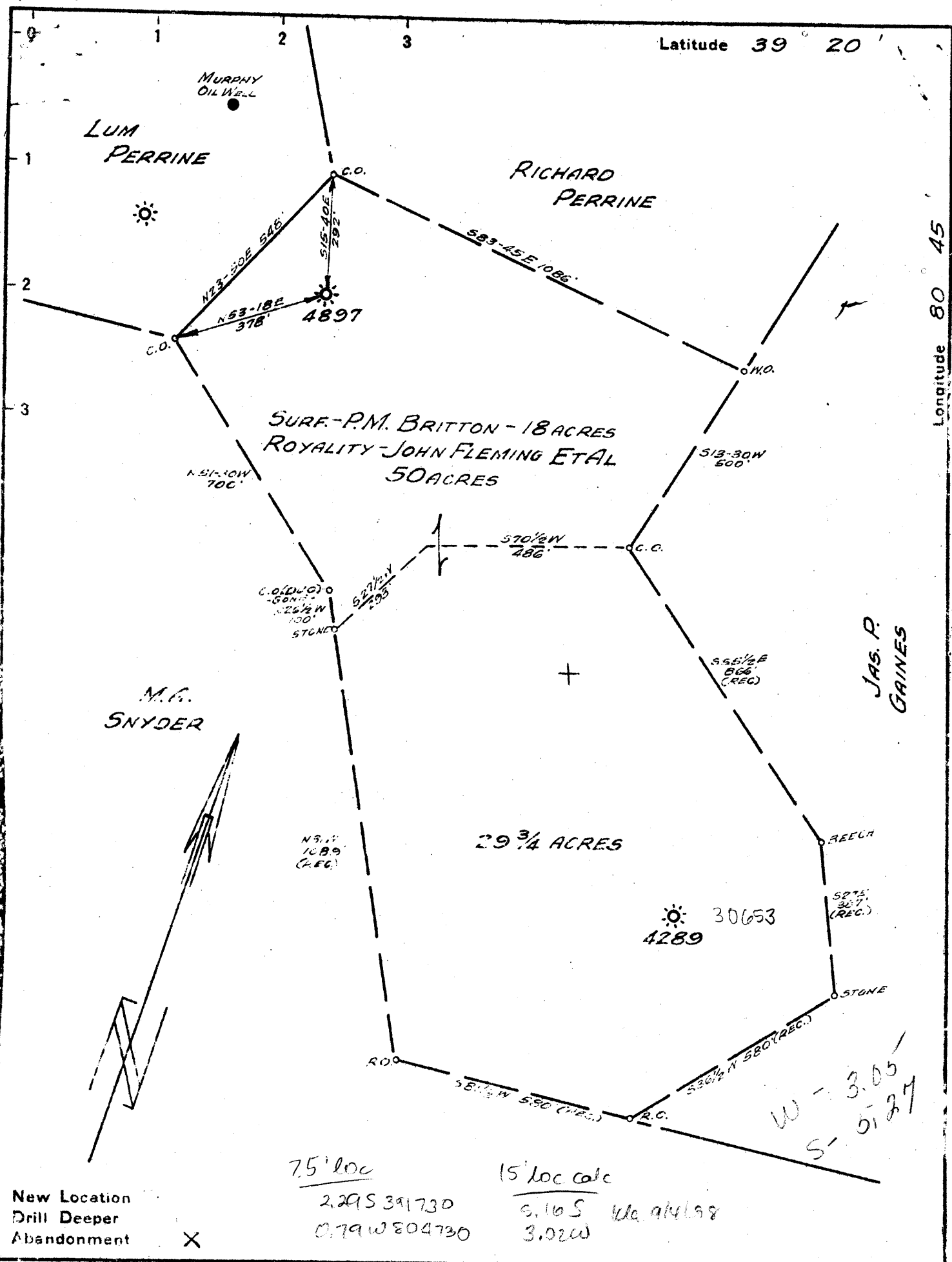


Latitude 39° 20'

Longitude 80° 45'



7.5' loc

15' loc calc

New Location
Drill Deeper
Abandonment X

2.29S 391730
0.79W 804730

6.16S 14691498
3.02W

Company PITTSBURGH & WVA GAS CO.
 Address CLARKSBURG, WVA.
 Farm JOHN FLEMING
 Tract _____ Acres 50 Lease No. 7363
 Well (Farm) No. Two Serial No. 4897
 Elevation (Spirit Level) 1198'
 Quadrangle WEST UNION S.E. 4³
 County DODDRIDGE District WEST UNION
 Engineer James D. Jaffee
 Engineer's Registration No. 1084
 File No. V-76.P-90 Drawing No. _____
 Date 1-24-41 Scale 1"=300'

STATE OF WEST VIRGINIA
 DEPARTMENT OF MINES
 OIL AND GAS DIVISION
 CHARLESTON

WELL LOCATION MAP
 FILE NO. DOD-357A

Was 517 71343
 + Denotes location of well on United States Topographic Maps, scale 1 to 62,500, latitude and longitude lines being represented by border lines as shown.

- Denotes one inch spaces on border line of original tracing.

AL

COMPANY

FORM: 638-14283

Record of Well No. 4897 Located on John Fleming Farm Jaw 10 1925
West Union District Dodridge County West Va State
 Division D District No. Drilled under well Order 233
 Rig built by John Craig Began Feb 7 1925 Completed Feb 11 1925
 Well drilled by Middle Island Drilling Co Began Feb 19 1925 Completed April 3 1925
 Depth of Well 2169 feet Size of Hole 6 5/8 Producing Gas
 Elev: 1198

CASED WITH			REMARKS
AMOUNT	SIZE	KIND	
<u>582</u>	<u>10</u>	<u>Old</u>	
<u>1160</u>	<u>8 1/4</u>	<u>"</u>	
<u>2021</u>	<u>6 5/8</u>	<u>"</u>	

COAL VEINS 185 679
189 684

FORMATIONS					
FORMATION	COLOR	OPEN OR CLOSE HARD OR SOFT	TOP	BOTTOM	REMARKS GAS-OIL-WATER (THICKNESS OF PAY)
<u>Major Sand</u>			<u>1929</u>	<u>1953</u>	<u>Oil Show 1934-1942</u>
<u>Little Limestone</u>			<u>1963</u>	<u>1990</u>	
<u>Chickadee</u>			<u>1990</u>	<u>1998</u>	
<u>Big Limestone</u>			<u>1998</u>	<u>2074</u>	
<u>Chickadee</u>			<u>2074</u>	<u>2150</u>	<u>Gas 2076-2084 Open flow</u>
<u>Thin Plate</u>			<u>2169</u>		<u>2126-2124 - Test at 2076</u> <u>10 2 1/2"</u>
					<u>Open flow test at 2084</u> <u>1 1/4 1/10 1 2 1/2"</u> <u>158 Mcf</u>

STATE OF WEST VIRGINIA
DEPARTMENT OF MINES
OIL AND GAS DIVISION

292

WELL RECORD

AD 357-A

Permit No.

Oil or Gas Well **Gas**
(Kind)

Company **Pittsburgh & West Va Gas Company.**
 Address **Clarksburg, West Va.**
 Farm **John Fleming** Acres **50**
 Location (waters) **West Union S/E. 4-3**
 Well No. **4897** Elev. **1198 VA**
 District **West Union** County **Doddridge**
 The surface of tract is owned in fee by **P. M. Britton**
 Address **West Union, W. Va.,**
 Mineral rights are owned by **P. M. Britton et al.**
 Address **West Union, W. Va.,**
 Drilling commenced **February 19th, 1925.**
 Drilling completed **April 3rd, 1925.**
 Date shot Depth of shot
 Open Flow /10ths Water in Inch
 /10ths Merc. in Inch
 Volume Cu. Ft.
 Rock Pressure lbs. hrs.
 Oil bbls., 1st 24 hrs.
 Fresh water feet feet
 Salt water feet feet

Casing and Tubing	Used in Drilling	Left in Well	Packers
Size			
16			Kind of Packer
13			
10	575'	575'	Size of
8 1/4	1154'	1154'	
6 5/8	2004'	2004'	Depth set
5 3/16			
3			Perf. top
2			Perf. bottom
Liners Used			Perf. top
			Perf. bottom

CASING CEMENTED SIZE No. Ft. Dat
 COAL WAS ENCOUNTERED AT **185** FEET **48** INCHES
679 FEET **60** INCHES FEET INCHES
 FEET INCHES FEET INCHES

Formation	Color	Hard or Soft	Top	Bottom	Oil, Gas or Water	Depth Found	Remarks
Slate			0	16			
Sand			16	60			
Red Rock			60	90			
Slate			90	120			
Lime			120	180			
Slate			180	185			
Coal			185	189			
Lime			189	225			
Red Rock			225	265			
Sand			265	290			
Red Rock			290	325			
Lime			325	410			
Slate			410	430			
Lime			430	530			
Sand			530	573	Water	560'	2 Bailers Br.
Slate			573	595			
Lime			595	615			
Slate			615	660			
Lime			660	679			
Pgh. Coal			679	684			
Lime			684	760			
Slate			760	795			
Red Rock			795	805			
Lime			805	875			
Red Rock			875	960			
Sand			960	975			
Slate			975	995			
Lime			995	1020			
Slate			1020	1040			
Red Rock			1040	1090			
Slate			1090	1100			
Slate			1100	1120			
Red Rock			1120	1140			
Lime			1140	1155			
Slate			1155	1175			
Sand			1175	1195			
Slate			1195	1245			
Lime			1245	1240			
Slate			1260	1345			
Sand			1345	1410			
Slate			1420	1460			



Formation	Color	Hard or Soft	Top	Bottom	Oil, Gas or Water	Depth Found	Remarks
Sand			1460	1510			
Lime			1510	1530			
Slate			1530	1705			
Sand			1705	1750			
Slate			1750	1865			
Masson Sand			1865	1880			
Slate			1880	1934			
Masson Sand			1934	1953			
Slate			1953	1963			
Little Lime			1963	1990			
Pencil Cave			1990	1998			
Big Lime			1998	2074			
Big Injun Sand			2074	2150	Gas	2075'	
Slate			2150	2169	"	2084'	
Total Depth				2169	"	2120-2124'	

October 7th,

Date..... 19. 40

PITTSBURGH & WEST VA. GAS COMPANY.

APPROVED..... Owner

By..... (Title)